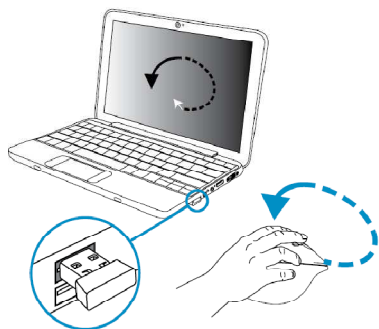


4



The dongle will be drive by windows, moving mouse and checking cursor as your wish
系統將自動驅動無線接收器・移動滑鼠・並檢查游標是否到達您希望的位置

1

Please download and install software from <http://www.hp.com/support>

Software zum Herunterladen und Installieren finden Sie auf <http://www.hp.com/support>

Descargue e instale el software en: <http://www.hp.com/support>

Veuillez télécharger puis installer le logiciel à partir de <http://www.hp.com/support>

Scaricare e installare il software dal sito Internet: <http://www.hp.com/support>

Download en installeer software via <http://www.hp.com/support>

Baixa e instale o software em <http://www.hp.com/support>

<http://www.hp.com/jp/support/>
からソフトウェアをダウンロードおよびインストールして
<http://www.hp.com/support/>에서
소프트웨어를 다운로드하고
설치하십시오.

請至 <http://www.hp.com/support>
下載並安裝軟體

請自 <http://www.hp.com/support>
下載並安裝軟體

Lütfen yazılımı: <http://www.hp.com/support> adresinden
indirin ve yükleyin

Загрузите и установите
программное обеспечение
с веб-страницы <http://www>.

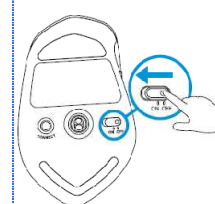
2

A



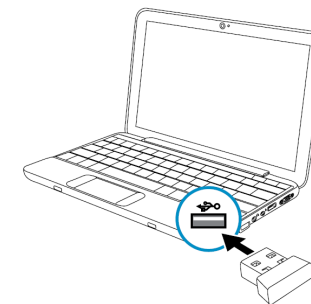
Pull off the battery insulation tap
開始使用前請拉開電池絕緣膠帶

B



turn on the power switch
打開電源開關

3

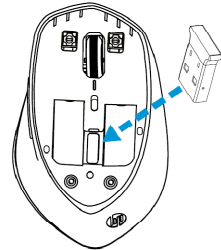


Insert the dongle(attach inside mouse) into USB port
將滑鼠內附的無線接收器插入USB槽



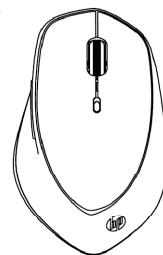
NOTE(提示)

A



Insert dongle into component when using
finished avoid to lose
使用完成後請將無線接收器歸回插槽・以免遺失

B

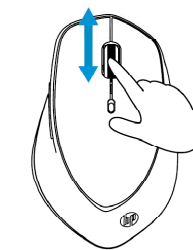


Pushing back top cover to keep
product entirety
並將上蓋蓋回・以保持產品的完整性



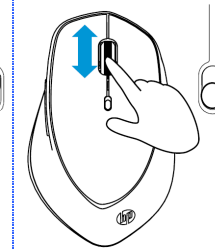
NOTE(提示)

A



Hiper speed scrolling
高速滾輪卷軸

B



Normal speed scrolling
正常速度滾輪卷軸

