

# Wireless Keyboard and Mouse User Guide

Your new computer has a 2.4 GHz Wireless Keyboard and Mouse Kit. It uses digital radio technology to ensure unhindered communication between the keyboard, the mouse and your computer without a cable connection. The transmission and reception of the keyboard and mouse are free from angle restrictions.

## Setup

- x The distance between the keyboard, mouse and receiver should not exceed 10 meters.
- x Do not place the receiver on metal surfaces.
- x Do not move Laser mouse on the following -
  - Glass or any transparent materials
  - Dark surfaces
  - Mirrored or reflective surfaces
  - Mouse pad with too many colors
  - Rough surfaces

## Setting up the mouse

### Step 1: Remove USB receiver (for selected models)

- Open the battery compartment cover at the top of the mouse. Remove the USB receiver (1).

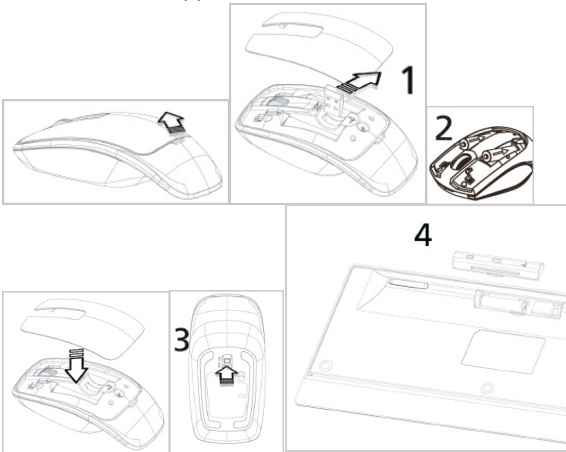
### Step 2: Insert the battery into the mouse

The mouse requires two AAA batteries.

- Insert two AAA batteries (2) into the battery compartment.
- Replace the battery compartment cover.

### Step 3: Turn on the mouse

- Ensure the switch (3) at the bottom of the mouse is ON.



## Setting up the keyboard

### Insert the battery.

- Remove the battery compartment cover (4) at the bottom of the keyboard by pushing it in the direction of the arrow.
- Insert two AAA batteries.
- Replace the battery compartment cover (4).

**CAUTION:** Risk of explosion if battery is replaced by an incorrect type. Dispose of used batteries according to instructions. Refer to "Important Battery Information" for disposal instructions.

## Using the mouse and keyboard

### Mouse

In addition to two buttons, the mouse also has a wheel that can be used as follows:

- As a 3<sup>rd</sup> button: Press on the wheel.
- For scrolling, e.g. in document or on Internet pages: Scroll the wheel forward or back.

### Keyboard

- The following key descriptions apply to the operating systems that support these functions (e.g. Windows 2000/XP/Vista/Windows 7/Windows 8).












**Windows Key**

Press to open the Start Menu



**Application Key**

Pressing the Application key is the same as clicking the right mouse key to open the current function menu

|  |                       |  |
|--|-----------------------|--|
|    | <b>Previous Track</b> | Multimedia key to skip to the previous track in the active player  |
|  | <b>Play/Pause</b>     | Multimedia key to play or pause the track or video in the active player  |
|  | <b>Stop</b>           | Multimedia key to end the track or video in the active player  |
|  | <b>Next Track</b>     | Multimedia key to skip to the next track in the active player  |
|  | <b>Mute</b>           | Press this key to mute / unmute the audio  |
| <b>VOL-</b>  | <b>Volume Down</b>    | Press this key to decrease the volume  |
| <b>VOL+</b>  | <b>Volume Up</b>      | Press this key to increase the volume  |
|  | <b>Sleep</b>          | Press this key to switch to standby mode (depending on the settings in the BIOS setup or operating system; not available under Windows NT) |
|  | <b>Search</b>         | Activate the default Internet/file search function   |
|  | <b>Email</b>          | Use this key to start the standard email program for your system   |
|  | <b>Internet</b>       | Use this key to launch the standard browser for your system.   |

## FEDERAL COMMUNICATIONS COMMISSION (FCC) STATEMENT

This equipment has been tested and found to comply with the limits for a Class B digital device, pursuant to Part 15 of FCC rules. These limits are designed to provide reasonable protection against harmful interference in a residential installation. This equipment generates, uses and can radiate radio frequency energy and, if not installed and used in accordance with the instructions, may cause harmful interference to radio communications. However, there is no guarantee that interference will not occur in a particular installation. If this equipment does cause harmful interference to radio or television reception, which can be determined by turning the equipment off and on, the user is encouraged to try to correct the interference by one or more of the following measures:

- Reorient or relocate the receiving antenna.
- Increase the separation between the equipment and receiver.
- Connect the equipment into an outlet on a circuit different from that to which the receiver is connected.
- Consult the dealer or an experienced radio/TV technician for help.

### FCC Caution:

"Changes or modifications not expressly approved by the part responsible for compliance could void the user's authority to operate the equipment."

This device complies with part 15 of FCC rules. Operation is subject to the following two conditions: (1) This device may not cause harmful interference, and (2) This device must accept any interference received, including interference that may cause undesired operation.

### IC Statement

This device complies with RSS-210 of the Industry Canada Rules. Operation is subject to the following two conditions: (1) This device may not cause harmful interference, and (2) this device must accept any interference received, including interference that may cause undesired operation.

Ce dispositif est conforme à la norme CNR-210 d'Industrie Canada applicable aux appareils radio exempts de licence. Son fonctionnement est sujet aux deux conditions suivantes:

- (1) le dispositif ne doit pas produire de brouillage préjudiciable, et
- (2) ce dispositif doit accepter tout brouillage reçu, y compris un brouillage susceptible de provoquer un fonctionnement indésirable

### WARNING:

Use only shielded cables to connect I/O devices to this equipment. You are cautioned that changes or modifications not expressly approved by the party responsible for compliance could void your authority to operate the equipment.

### CAUTION: AVOID PROLONGED USE OF THE KEYBOARD WITHOUT BREAKS.

Take regular breaks and keep a good posture. Consult your physician promptly if you notice any loss of motion or pain in your wrist when using the keyboard.

### INFORMATION FOR OPTICAL POINTING DEVICES ONLY:

**CLASS 1 LASER PRODUCT**

Complies with FDA performance standards for laser products except for deviations pursuant to Laser Notice No. 50, dated June 24, 2007.

**IMPORTANT BATTERY INFORMATION**

- Keep batteries out of reach of children.
- Insert the batteries in the proper direction as indicated by the positive (+) and negative (-) markings in the battery compartment.
- Do not mix old and new batteries or batteries of different types (for example, carbon and alkaline batteries).
- Always remove old, weak, or worn-out batteries promptly and recycle or properly dispose of them in accordance with local and national disposal regulations.
- If a battery leaks, remove all batteries and recycle or dispose of them in accordance with the battery manufacturer's instructions and local and national disposal regulations. Before inserting new batteries, thoroughly clean the compartment with a damp paper towel, or follow the battery manufacturer's recommendations for cleanup. If fluid from the battery comes into contact with skin or clothes, flush skin with water immediately.
- Remove the batteries if your device is to be stored for an extended period of time without being used.

**PRODUCT DISPOSAL INFORMATION**

Dispose of this product in accordance with local and national disposal regulations.