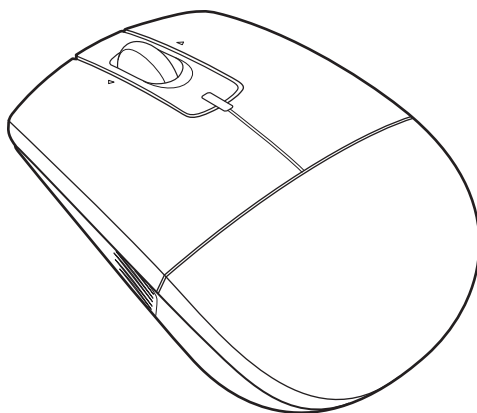


Nano 2.4G Laser Mouse User's Manual



Contents

Preface	1
About This Manual	1
Safety	1
Introducing your Mouse	2
System Requirements.....	2
Features	2
Resolution	2
Battery.....	2
Package Contents	3
Product Views.....	4
LED Status	5
Installing the Battery	6
Installing and Uninstalling Mouse Suite	7
Installing the Mouse Suite.....	7
Uninstalling the Mouse Suite	9
Setting Up your Mouse	10
Adjusting the Tilt Scroll Wheel Speed	11
Tilt Scroll Wheel.....	11
Adjusting Speed	11
Troubleshooting	13
Specifications	14

Legal Notices..... 14

FCC Statement..... 14

Regulatory Compliance..... 15

Copyright 15

Preface

Thank you for your purchase of this mouse. Read this manual carefully and keep it in a safe place for future reference.

About This Manual

Every effort has been made to ensure that the contents of this manual are correct and up to date. However, no guarantee is made regarding the accuracy of the contents, and the manufacturer reserves the right to make changes without notice.

Safety

Before getting started, read these instructions and save them for future reference.

- Do not drop or hit your mouse.
- Do not use your mouse in a location that is subject to strong vibrations because vibration may damage your mouse.
- Do not disassemble or modify the product in any way. Disassembly or modification may void your warranty and could damage your mouse leading to a fire or electric shock.
- Do not use or store your mouse in damp locations. Liquid entering the product may cause damage or lead to fires or electric shock.
- Do not insert metal objects, such as coins or paper clips, into your mouse.
- The mouse is a Laser product. Do not directly look the Laser component while using. It may harm your eyes.
- Your mouse is for general computer use. Do not use your mouse with a computer that requires exceptional reliability, especially if a breakdown or malfunction of might jeopardize life or health, such as aerospace equipment, atomic power control systems, traffic-related equipment, transportation equipment,

industrial robotics, combustion equipment, safety devices, and life-support systems.

1 Introducing your Mouse

Read this section to learn about the features and functions of your mouse. This chapter also covers system requirements, package contents, and front and rear views.

1.1 System Requirements

Your computer must meet these requirements:

- Microsoft R Windows R2000C XP, VISTA32/64
- Microsoft Logo Program 3.1 or higher
- Microsoft WHQL PC99 Mouse Specification 1.2 or higher
- Microsoft ACPI and OnNow requirements

1.2 Features

- Advanced tilt scroll wheel for added functionality
- Optical sensor
- Low battery consumption

1.3 Resolution

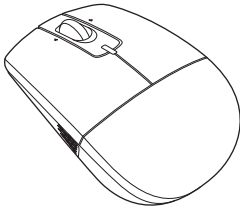
- 1200 DPI

1.4 Battery

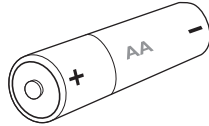
- AA Alkaline batteries X 1

1.5 Package Contents

All the following items should be present when you receive your mouse package. If any item is missing or appears damaged, contact your dealer immediately.



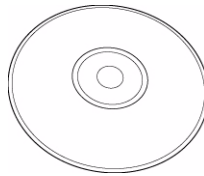
Mouse



AA Battery x 1

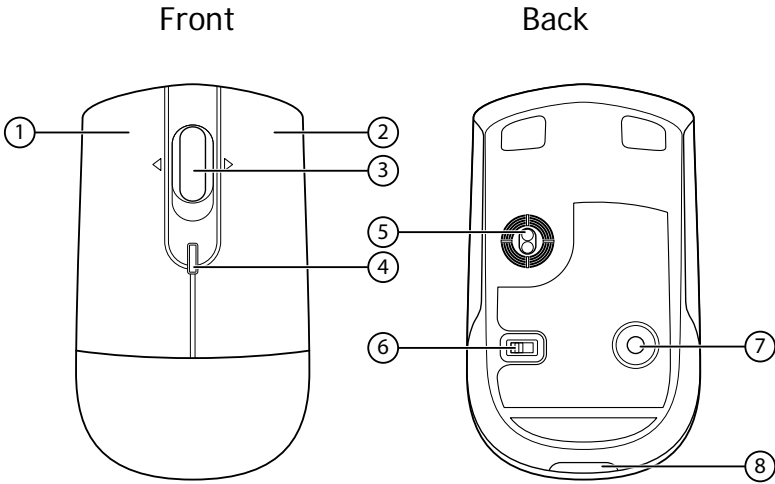


User's Manual



CD

1.6 Product Views



1	Left Button
2	Right Button
3	Tilt Wheel (Middle Button)
4	LED
5	Optical Sensor
6	Power Switch
7	Connect Button
8	Battery Cover

2 LED Status

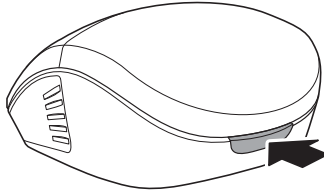
The following table lists the status of the mouse LED and its descriptions:

LED	Color	Description
Mouse LED	Green	If the battery voltage is greater than 1.15V, the LED will show green for 5 seconds then turns off.
	Red	If the battery voltage is less than 1.15V, the LED will show red 5 seconds then turns off.
	Flash	If the battery voltage is less than 1.15V, the LED will flash for 60 seconds and turns off.
	Off	If the battery voltage is less than 1.0V, the LED will be off and the mouse would not work.

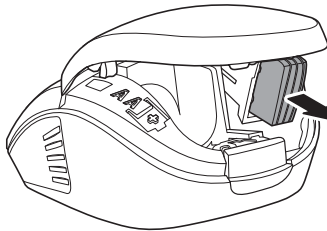
3 Installing the Battery

The mouse needs one AA size battery. Follow the steps below to install the battery:

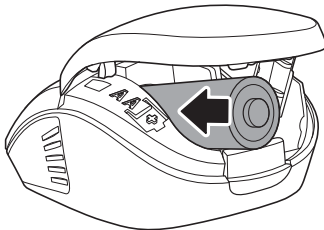
1. Press to open the battery cover as shown.



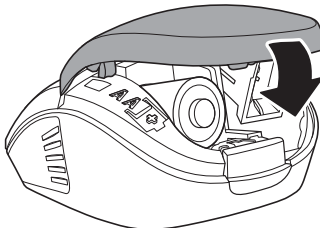
2. Remove the dongle from the mouse.



3. Install the battery observing the polarity (+ and -) indicated inside the housing.



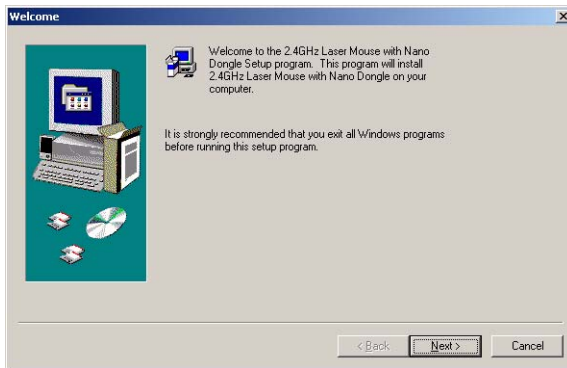
4. Replace the battery cover.



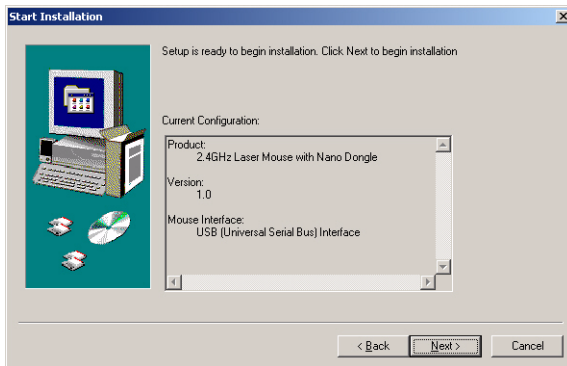
4 Installing and Uninstalling Mouse Suite

4.1 Installing the Mouse Suite

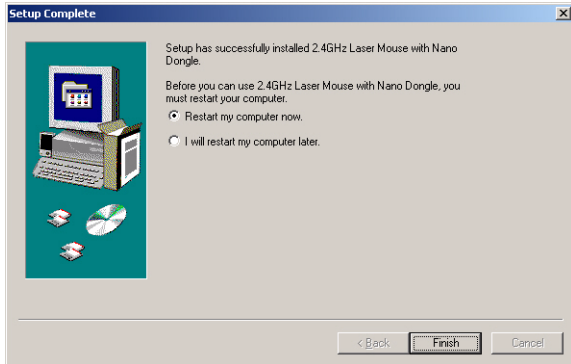
1. Insert the provided Installation CD in the CD ROM drive.
2. The software starts automatically. If not, browse your CD ROM drive and double click the *Setup.exe* file.
3. The welcome screen introduces the installation process. Click **Next** to continue.



4. Review a summary of items to be installed, and then click **Next** to continue.



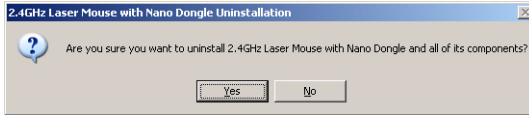
5. The program has installed successfully and requires you to reboot your computer before using the Mouse Suite.



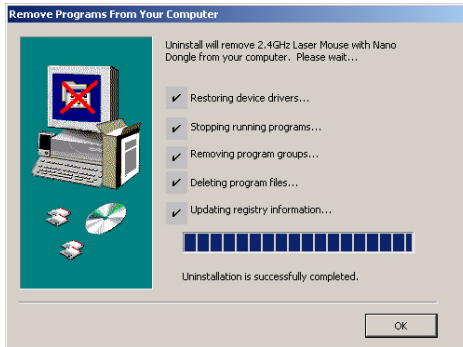
4.2 Uninstalling the Mouse Suite

Follow the steps below to uninstall the Mouse Suite from your computer:

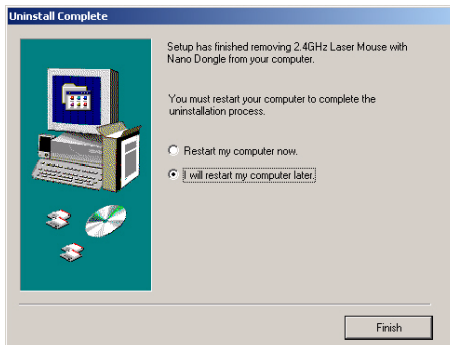
1. Click **Start > Programs > 2.4GHz Laser Mouse > Uninstall 2.4GHz Laser Mouse Driver**. The following screen displays. Click **Yes** to uninstall the Mouse Suite or **No** to cancel.



2. The program starts automatically to uninstall the Mouse Suite. When finished, click **OK**.

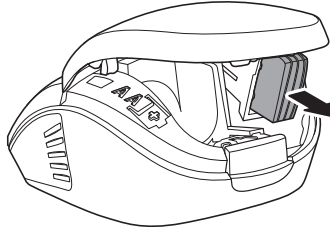


3. When the program has been removed, you will be required to reboot your computer. Then click **Finish** to exit.

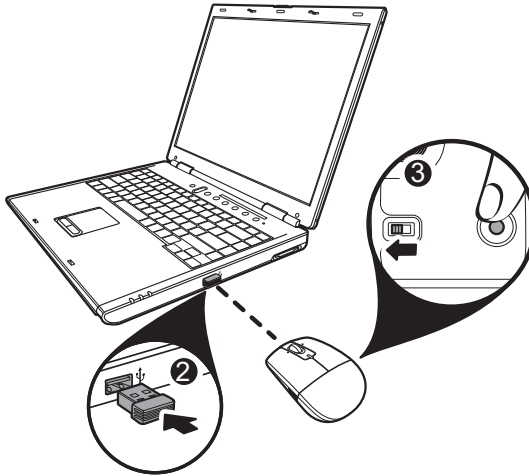


5 Setting Up your Mouse

1. Remove the dongle from inside the battery cover.



2. Plug the dongle into the USB port of your computer.
3. Slide the **Power Switch** and press the **Connect Button** of your mouse until the LED lights green.



6 Adjusting the Tilt Scroll Wheel Speed

6.1 Tilt Scroll Wheel

Your mouse comes with an advanced scroll wheel that enables horizontal window scrolling as well as vertical.

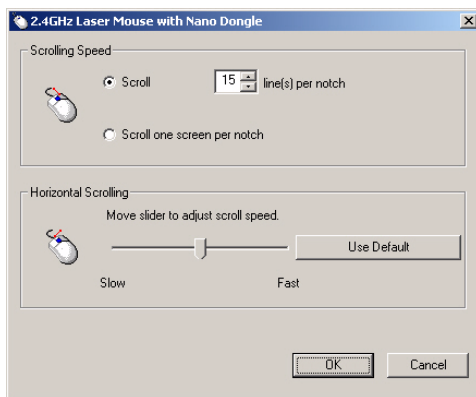


Use the tilt scroll wheel to scroll the screen horizontally and vertically.

You can also press and hold the scroll button inwards. A four-way icon appears. Then move the mouse up/down or left/right to scroll the screen in four different directions.

6.2 Adjusting Speed

To adjust the scrolling wheel speed, click **Start > Programs > 2.4GHz Laser Mouse > 2.4GHz Laser Mouse Driver**. The following screen appears.



Scroll Speed

You can specify the speed at which the screen will scroll when using the scroll wheel function.

1. Select **Scroll x lines per notch** or **Scroll one screen per notch**.

Scroll x lines per notch	Select to set the number of lines to scroll when the scroll wheel is moved one notch. Specify the number of lines with the up and down arrows.
Scroll one screen per notch	Select to scroll the entire window when the scroll wheel is moved one notch (i.e. page up/down).

2. Click **OK** to have your changes take effect.

Horizontal Scrolling

To adjust Horizontal Scrolling:

1. Move the slider to left to decrease the speed or move the slide to the right to increase the speed or select **Use Default** to reset your settings.
2. Press **OK** to have your changes take effect.

7 Troubleshooting

If you have any problems with your mouse, please check the following:

- Check the system requirements to make sure that your system is compatible.
- Check to see if the battery in the mouse is installed correctly. Make sure the polarity of the battery corresponds with the polarity signs inside the mouse battery compartment.
- When the mouse LED lights red, it indicates battery power is low. Replace the battery with a new one immediately.
- Only use the mouse on a clean, flat, non-slippery surface in order to ensure smooth and accurate cursor action. If you use a mouse-pad, choose a light-colored one; a dark mouse-pad consumes more battery power.

For further assistance with any other questions you may have, please contact your dealer for technical support.

8 Specifications

Dimensions	35.1 (H) x 92 (L) x 55 (W) mm
Resolution	1200 DPI
Buttons	3 buttons with 1 tilt scroll wheel
Interface	USB dongle
Compatibility	Microsoft R Windows R2000C XP, VISTA32/64 Microsoft Logo Program 3.1 or higher Microsoft WHQL PC99 Mouse Specification 1.2 or higher Microsoft ACPI and OnNow requirements
Operating Temperature	0°C ~ 40°C
Operating Humidity	90% RH or less
Storage Temperature	-40°C ~ 60°C
Storage Humidity	95% RH or less

9 Legal Notices

9.1 FCC Statement

This equipment has been tested and found to comply with the limits of a Class B digital device, pursuant to Part 15 of the FCC Rules. These limits are designed to provide reasonable protection against harmful interference in a residential installation. This equipment generates, uses, and can radiate radio frequency energy and if not installed and used in accordance with the instructions,

may cause harmful interference to radio communications. However, there is no guarantee that interference will not occur in a particular installation. If this equipment does cause harmful interference to radio or television reception, which can be determined by turning the equipment off and on, the user is encouraged to try to correct the interference by one or more of the following measures:

- Reorient or relocate the receiving antenna;
- Increase the separation between the equipment and receiver;
- Connect the equipment into an outlet on a circuit different from that to which the receiver is connected;
- Consult the dealer or an experienced radio/TV technician for help

Changes or modifications not authorized by the party responsible for compliance could void the user's authority to operate this product.

9.2 Regulatory Compliance

This device complies with Part 15 of the FCC Rules. Operation is subject to the following two conditions: (1) This device may not cause harmful interference, and (2) This device must accept any interference received, including interference that may cause undesired operation.

This Device complies with RSS-210 of the IC Rules, Operation is subject to the following two conditions:

- (1). This device may not cause interference and
- (2). This device must accept any interference received, including interference that may cause undesired operation.

Copyright

© Copyright 2009. All rights reserved.