

HP MORFD3UO Wireless MOUSE USRE MANUAL

This guide will take you through all the functions of the mouse and explain how to configure them using the mouse.

Introduction

Congratulations on your purchase of the HP Wireless Mouse.

This mouse is the latest in a wide range of computer peripherals manufactured by HP and is designed to provide you with the highest level of comfort available while also allowing for maximum functionality.

The HP MORFD3UO RF Mouse is a simple yet innovative package that allows you to configure your mouse to best meet your needs.

Safety Guidelines

Physical discomfort and injury can be caused by the incorrect use of your mouse. Follow these guidelines to ensure such problems are avoided:

- Sit up straight in your chair, with your elbows by your side.
- Adjust the height of your chair so your arm bends at a 90-degree angle respective to your desk.
- Position your mouse in front you, to the side of your keyboard.
- Do not slouch or hunch over your workspace. It is important to keep your wrists, arms and shoulders relaxed.
- If necessary, use a wrist rest or a palm rest to alleviate extra stress placed on your joints when typing or using the mouse, especially for long periods of time.

If you experience any feelings numbness, cramp, swelling or stiffness in your wrist, arms, neck or shoulders, consult your local doctor or nearest health institution immediately.

Navigating HP Wireless Mouse

The simple and straightforward interface makes it easy for you to customize each function of your mouse.

Different settings are indicated by the tabs on the top of the screen. Click on the links to enter each settings screen.


Changing Button Settings

You can configure each of the five mouse buttons through the button settings screen.

The '**Select Button**' list displays the list of buttons and their current function. The '**Select Task**' list displays a list of actions you can take to configure the button highlighted in the '**Select Button**' list.

Move your mouse over the '**Select Button**' list and click each item to view more information.


Restore Defaults

Each setting screen has a Restore Defaults button. Click  to restore all settings to their original defaults.

The Left and Right Click Buttons

By default, the left mouse button is set to operate as a standard left click button. The right mouse button is set to operate as a standard right click button.

If you want to swap these two button functions, check the **Swap Buttons** checkbox. Click

 to save all changes.

The Middle Mouse Button

By default, the mouse wheel is set to operate as **Middle Button** when pressed.

Select the function you wish to assign to the middle button by checking the radio buttons in the **Select Task** list.

Click  to save all changes.

Move your mouse over and click any of the **Select Task** list options for more detailed information.

Side Button 1

By default, the button is set to operate as **Backward** when pressed.

Select the function you wish to assign to the button by checking the radio buttons in the **Select Task** list.

Click  to save all changes.

Move your mouse over and click any of the **Select Task** list options for more detailed information.

Side Button 2

By default, the button is set to operate as **Forward** when pressed.

Select the function you wish to assign to the button by checking the radio buttons in the **Select Task** list.

Click  to save all changes.

Move your mouse over and click any of the **Select Task** list options for more detailed information.

Middle Mouse Button

Select to assign the button to Middle Mouse Button by checking the radio buttons in the **Select Task** list.

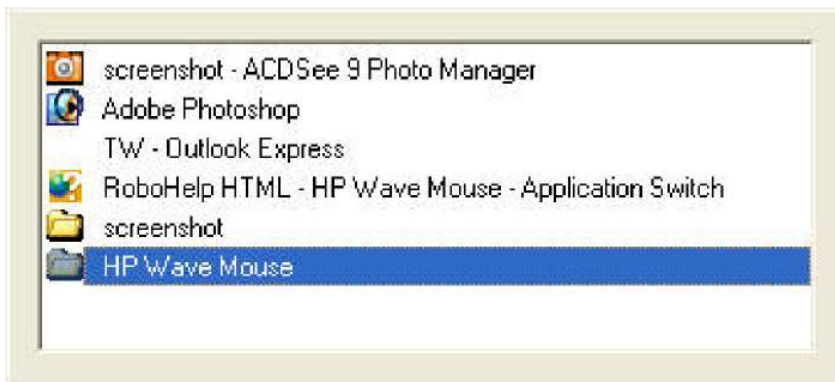
Click  to save all changes.

Move your mouse over and click any of the **Select Task** list options for more detailed information.

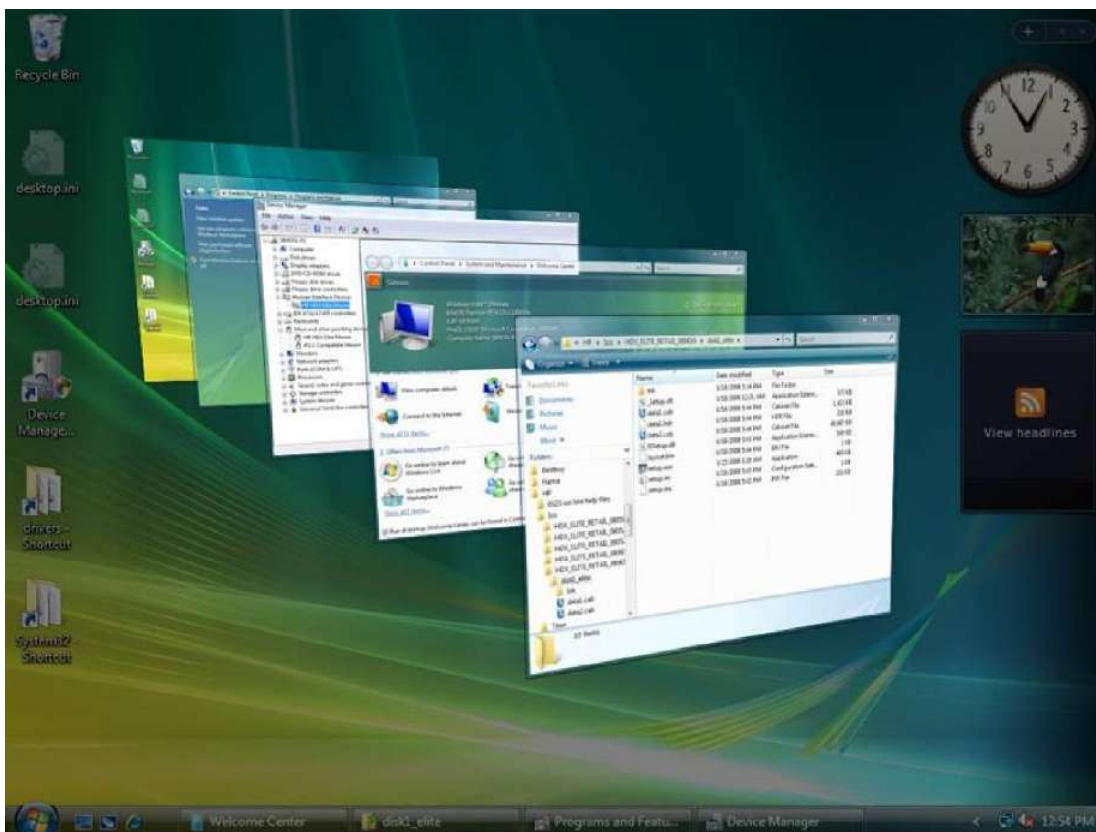
3D Flip

Select to switch between running programs when you click the mouse wheel. An application list appears

Windows XP:



Windows Vista:



Roll the mouse wheel to scroll up and down the list.
Click any mouse button to switch to the selected application.


Forward

When you press the button, the page you visited before you pressed the Backward button is displayed in your browser.

Click  to save all changes.

Backward

When you press the button, the last page you visited in your browser is displayed. Click

 to save all changes.

Other

Select to execute one of a set of other pre-defined functions when you press the button.

A drop down menu will appear. Select an application from the following list:



Click  to save all changes.

Change Wheel Settings

You can configure the wheel settings in the wheel settings screen.

The '**Scrolling Speed**' section allows you to adjust the scroll speed when you scroll the wheel vertically.

The '**Horizontal Scrolling**' section allows you to adjust the scroll speed when you scroll the wheel horizontally (tilt left/right).

Mouse Wheel

Select the scrolling speed you want by clicking the Scrolling Speed options:



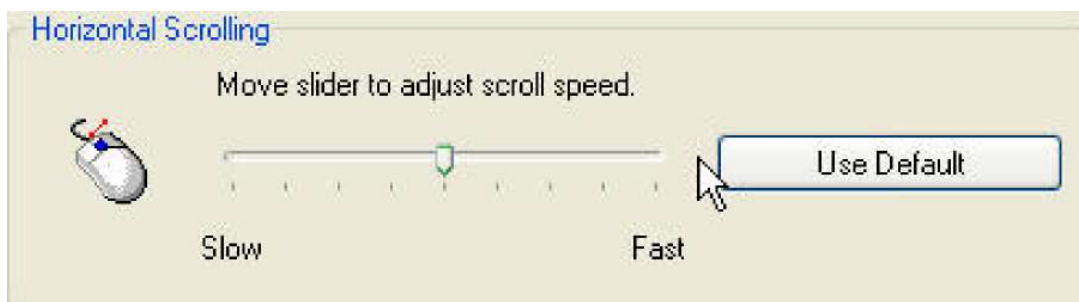
Scroll: Click the radio button and use the up/down arrows to increase/decrease the speed.

Scroll one screen per notch: Click the radio button to choose scroll down by screen when you move the mouse wheel.

Click  to save all changes.

Horizontal Scrolling

Move the slider to the left/right to decrease/increase the horizontal scrolling speed.



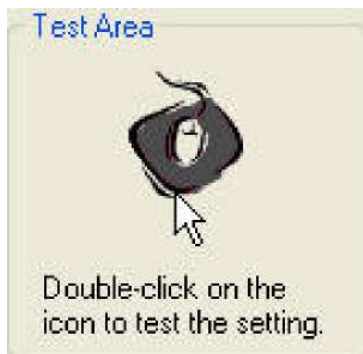
Click  to save all changes.

Double-Click Speed

Move the slider to set the pointer movement speed.



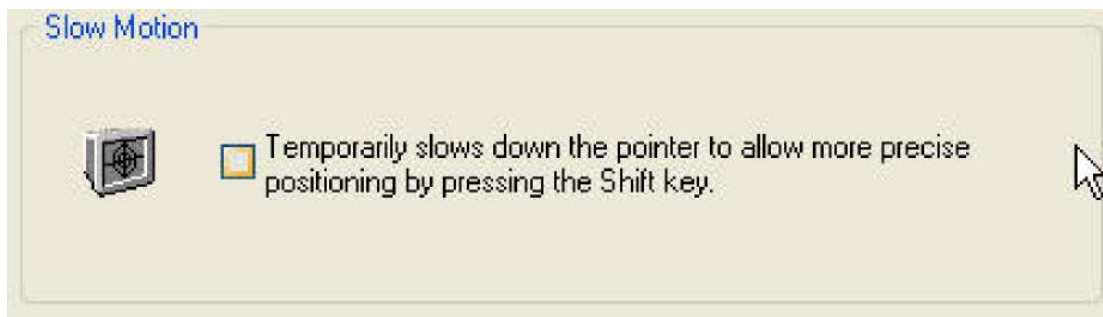
Move the point in the Test Area to test your new setting.



Click to save all changes.

Slow Motion

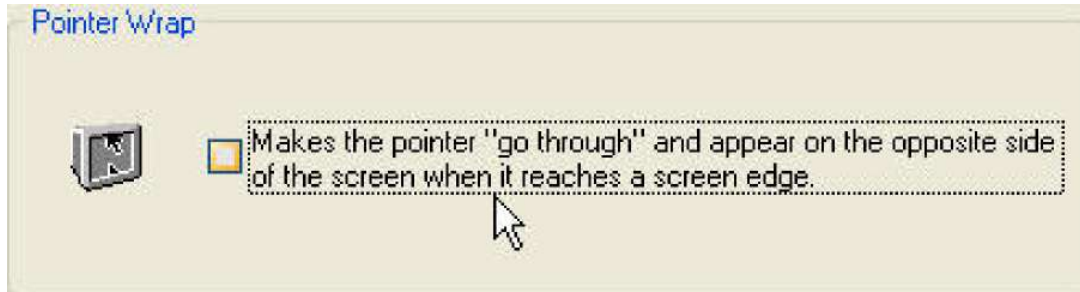
Check to enable the slow motion function by pressing the Shift key.



Click to save all changes.


Pointer Wrap

Check to enable the "go through" function.



Click  to save all changes.

Show icon in the system tray

Click to display the  icon in the system tray when the Mouse Suite software is running.

Click this icon to bring up the main screen

Troubleshooting

Question: My mouse is not working. What should I do?

Answer: Check if the receiver is plugged in correctly to your computer's USB port. A loose connection may result in the computer not being able to detect the device.

If your mouse is connected to a hub or multi-port USB connector, unplug the device and plug it directly into your computer's USB port, ensuring there is no interference caused by these devices.

Other system devices, such as PC cards, may cause conflicts that prevent your mouse from working properly. Check the settings of these devices and make any changes as necessary. Reboot your computer and re-attach the mouse.

Question: The mouse pointer is not moving. What should I do?

Answer: Ensure all setup procedures have been followed correctly. If software and drivers have already been installed, remove these, reboot your computer and re-install.

Clean the mouse lens with a cotton swab. Do not use any other materials or solvents to clean the mouse lens as this may result in damage to the lens.

As this is an optical device, it is important to use it on an appropriate surface. If the surface you are using your mouse on is red in color or highly reflective, the surface may be the source of the problem. Use either a mouse mat or change to a more neutral-colored surface.

Ensure that batteries are not out of power. Replace batteries if necessary.

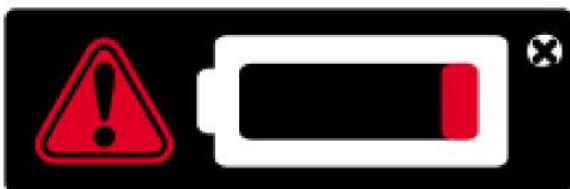
Question: The mouse pointer is moving abnormally. What should I do?

Answer: The likely cause of this problem is debris around or on the lens which is interfering with the optical signal. Clean the mouse lens with a cotton swab. Do not use any other materials or solvents to clean the mouse lens as this may result in damage to the lens.

If the mouse pointer continues to move abnormally after cleaning, re-install the drivers and software.

Low Battery Notification

When the mouse is running out of power, a Notification window will pop up on the screen.



Replace the batteries to continue to use the mouse.

Note: It is recommended to only use high-capacity alkaline batteries with this product.

FCC Statement for 27MHz Mouse or Keyboard

Federal Communication Commission Interference Statement

This equipment has been tested and found to comply with the limits for a Class B digital device, pursuant to Part 15 of the FCC Rules. These limits are designed to provide reasonable protection against harmful interference in a residential installation. This equipment generates, uses and can radiate radio frequency energy and, if not installed and used in accordance with the instructions may cause harmful interference to radio communications. However, there is no guarantee that interference will not occur in a particular installation. If this equipment does cause harmful interference to radio or television reception, which can be determined by turning the equipment off and on, the user is encouraged to try to correct the interference by one or more of the following measures:

- ◆ Reorient or relocate the receiving antenna
- ◆ Increase the separation between the equipment and receiver
- ◆ Connect the equipment into an outlet on a circuit different from that to which the receiver is connected.
- ◆ Consult the dealer or an experienced radio/TV technician for help.

FCC Caution: Any changes or modifications not expressly approved by the party responsible for compliance could void the user's authority to operate this equipment.

This device complies with Part 15 of the FCC Rules. Operation is subject to the following two conditions: (1) this device may not cause harmful interference, and (2) this device must accept any interference received, including interference that may cause undesired operation.