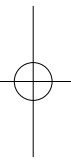
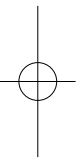


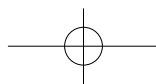
# Lenovo

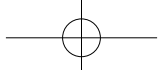
## A700 Series

### 3-in-1 Mouse User Manual



***lenovo***





## Announcement

Thank you for choosing Lenovo products.

Please read the information included in the product package thoroughly and carefully before you first install and use this product, which will help you use the product better. Lenovo (Beijing) Ltd. will not be liable for any damages caused by your failure to follow the instructions and requirements herein or by any misoperation of this product due to your misunderstanding of the content of this manual.

Lenovo (Beijing) Ltd. has emended and checked the document strictly, but we do not assure that there is no error or oversight.

The pictures in this manual are for your reference purpose only. If any of them are different from the actual product, please refer to the actual product.

In order to provide better services, Lenovo (Beijing) Ltd. reserves the right to improve and / or modify the product and the software program described in this manual and its content without notice.

Lenovo (Beijing) Ltd. will not be responsible for any data loss caused by malfunction of hardware and software, product maintenance, or other situations; nor will we be responsible for associated indirect loss. Please backup your data normally.

If you find during the usage the actual product is different from this manual, or you want to get the update information, or you have any question or concern, please visit:

Lenovo website: <http://www.lenovo.com>

The content of this manual is protected by the law of copyright. Without a written authorization from Lenovo (Beijing) Ltd., you cannot copy, excerpt, transmit through wired or wireless networks, or translate the manual into any other language.

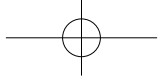
The content of this manual is subject to change without notice.

联想, lenovo, lenovo 联想 are either trademarks or registered trademarks of Lenovo (Beijing) Limited and/or its affiliates.

Microsoft and its identification, as well as Windows, Windows 2000, Windows XP, Windows Vista, Windows 7, Windows Media are either registered trademarks or trademarks of Microsoft Corporation in the United States and/or other countries/territories.

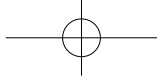
Other products or services, brands and trade names mentioned in this manual are either trademarks or registered trademarks of Lenovo or their respective owner.

Copyright © 2010 Lenovo (Beijing) Limited. All rights reserved.



# Contents

Mouse Bluetooth Connection Guide .....	3
Mouse Usage Mode .....	7
Mouse Functions and Status .....	10
(Motion Drive Game Zone) Game Platform .....	12
Cautions .....	20
Troubleshooting .....	20



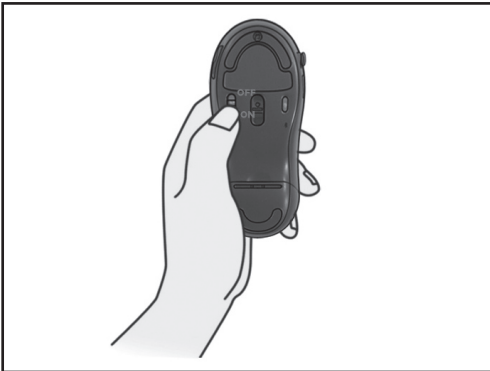
## Mouse Bluetooth Connection Guide

Prior to the first use, the mouse and the All-In-One PC are in the factory backup status.



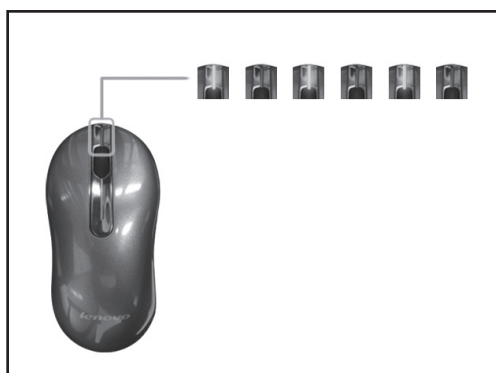
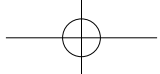
Insert the batteries properly as shown in the diagram.

⚠ Ensure correct battery polarity.



⚠ Make sure the one-in-all device is off.

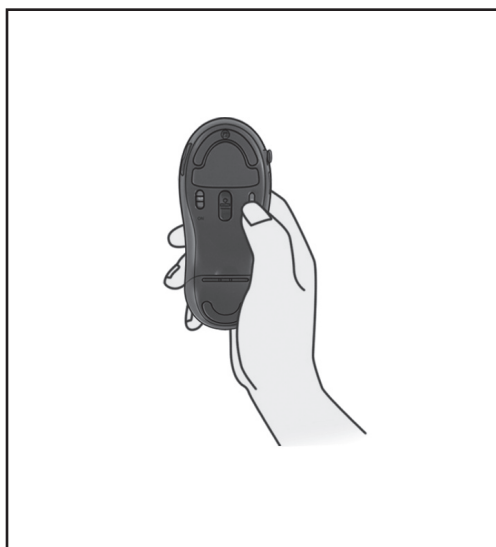
Switch the power switch to "ON".



The green light on the front end flashes, indicating the mouse starts the matching process.

Turn on the computer and it will automatically search the bluetooth device. Once the system window is entered, the mouse will be ready to use.

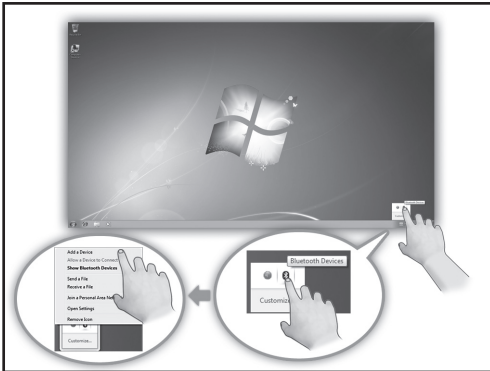
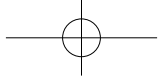
If the mouse is unable to work properly, or it needs to re-connect the PC, you can follow the following steps for mouse connection.



1. Press the connect button

The green light on the front end flashes, indicating the mouse starts the matching process.

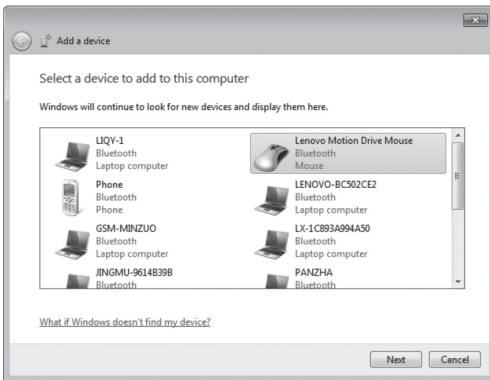
**!** After the mouse enters the matching state, the following search and connection process must be completed with ten minutes and otherwise the mouse will enter the sleep mode.



2. Search for Bluetooth devices

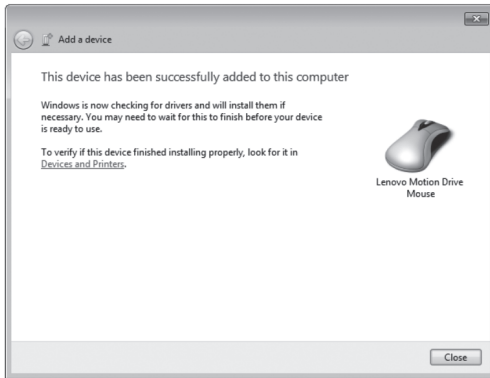
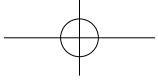
Click the “Bluetooth” icon on the system toolbar and select “Add device” option.

The system automatically starts searching for Bluetooth devices.



3. The wireless device “Lenovo Motion Drive Mouse” appears in the list of wireless devices, indicating that the system has found the mouse device.

Click this icon and then “Next” to continue the Bluetooth matching operation.

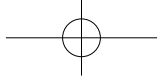


4. When the icon “This device has been successfully added to this computer” is displayed.

Click “Close” to finish the matching.

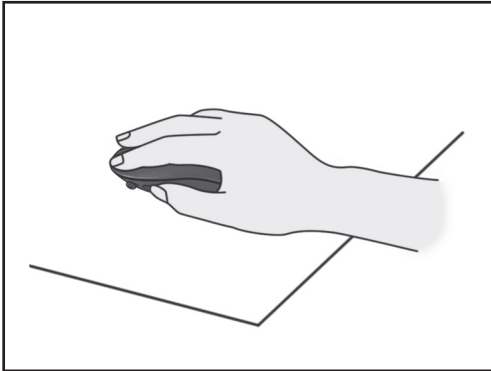
Now the red light on the front end of the mouse keeps on constantly, which indicates the connection of the mouse to the All-In-One PC is successful and the mouse can work normally.

⚠ When the Bluetooth connection is established, you need not press again the connect button on the mouse; otherwise the matching process will be re-launched.



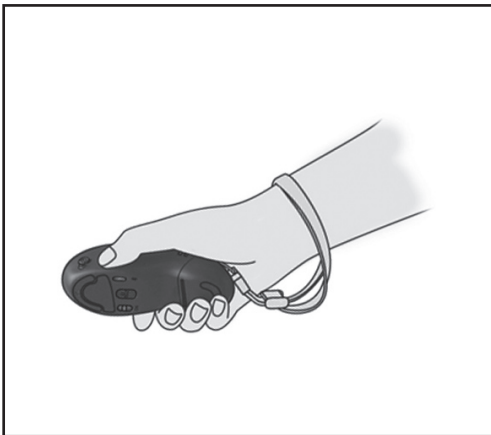
## Mouse Usage Mode

### 1. Description of the Mouse Usage Mode



#### (1) Ordinary mouse mode

It can be used as an ordinary optical mouse by placing it on the table.



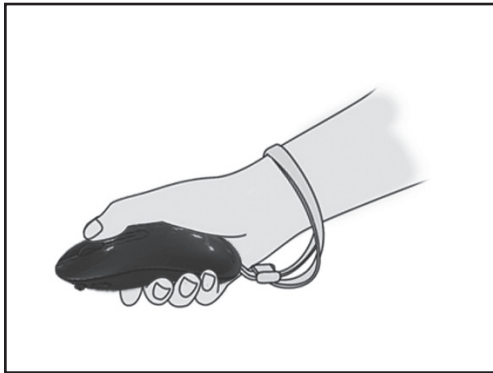
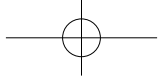
#### (2) Air mouse mode

Hold the mouse in the air and it will automatically enter the air mouse state.

The air mouse supports the vertical and horizontal use.

This diagram shows the vertical grip of the mouse. Buttons A and B function like left and right buttons, respectively.

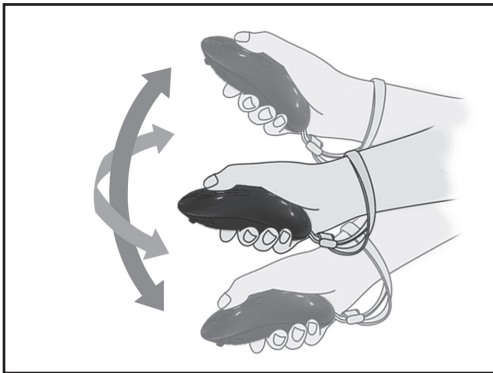




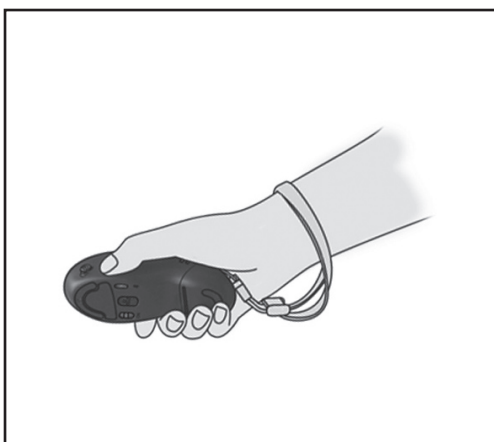
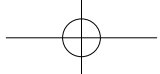
### Air mouse mode

This diagram shows the horizontal grip of the mouse.

**!** Do not block the optical light at the bottom of the mouse by your fingers.



In the air mouse mode, you can move the cursor by moving the mouse up, down, left or right in the air.



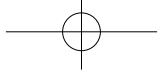
### (3) Game mode

The mouse will switch to the game state when you launch the game platform and enter a game.

The mouse should be vertically used in this case.

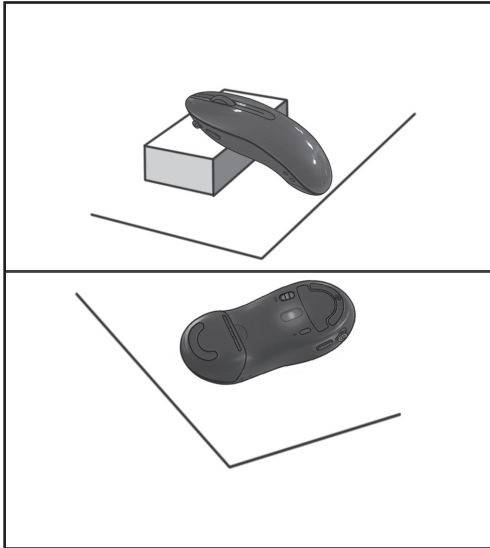
Then the left and right buttons cannot be used but replaced by A and B buttons and the joystick.

The mouse will enter the sleep mode if there is no operation for three minutes in the power-on status. At this time, the indicator on the front end of the mouse is off, and the optical lens lamp at the bottom of the mouse keeps blinking. By pressing any button of the mouse or moving the mouse, it will wake up and recover the normal working state.



## 2. Air Mouse Calibration

If the mouse cursor moves on the All-In-One PC screen while the mouse remains still in the air mouse mode, then you need to calibrate the air mouse.



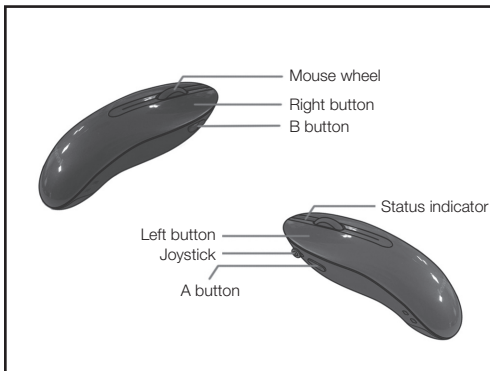
Prop up the front end using some object or turn over the mouse and place it on the table still.

The mouse will start auto calibration and can be used normally ten seconds later when completed.

**!** When the mouse is turned over, the auto calibration may last slightly longer than ten seconds probably due to the indoor lighting.

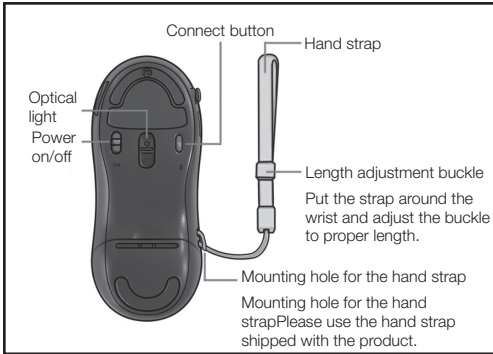
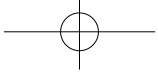
## Mouse Functions and Status

This mouse is designed for Lenovo AIO (i.e. the All-In-One PC).



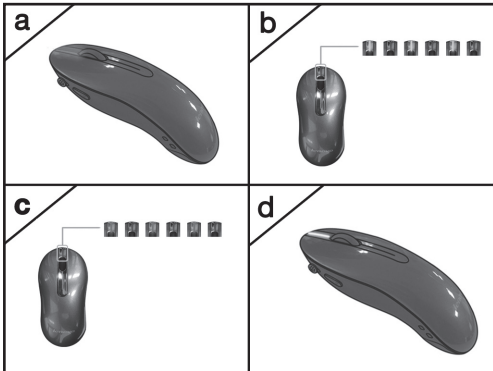
Front view of the mouse

Indicator and function buttons

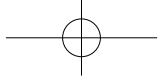


Bottom view of the mouse

Indicator status



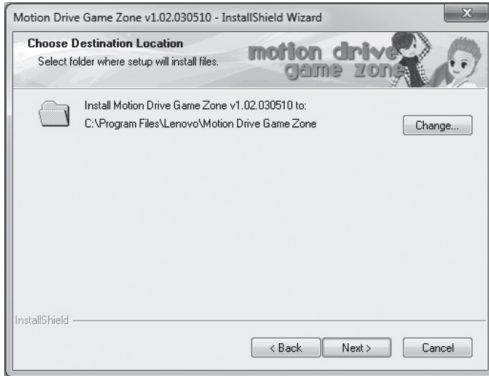
- a. Mouse works in three modes: the red indicator is constantly on.
- b. Mouse is in the matching process: the green indicator flashes.
- c. Mouse has low battery: the red indicator flashes.
- d. Mouse is in the Factory backup state: the yellow indicator flashes.
- e. Mouse is in sleep mode, power off or its battery is below the critical level: the indicator is off.



## (Motion Drive Game Zone) Game Platform

### 1. To install the game

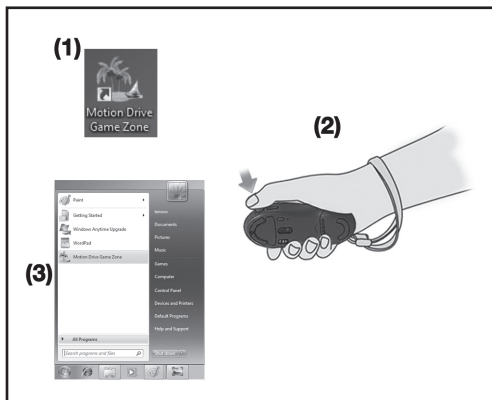
Firstly insert the CD into the CD-ROM and the installer will run automatically.



Select the destination directory for the program and then click Next.

Once the installation is completed, a shortcut icon of the game will appear on the desktop and the Start menu.

### 2. To start the game



Launch the game in the following ways:

- (1) Double click the game shortcut on the desktop;
- (2) In the desktop state, press downward the joystick button of the mouse;
- (3) Run the game from the Start menu.

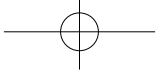
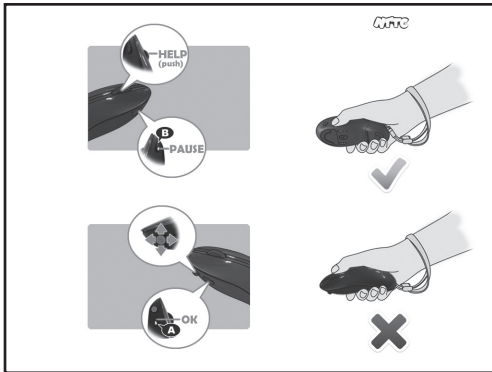


Illustration of the main game interface

### 3. Game operation rules



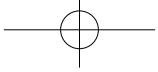
Wheel button: Help Key

Joystick: Direction Key

A button: OK Key

B button: Pause Key

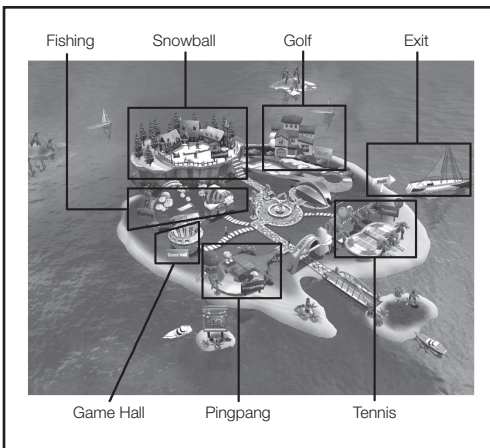
**!** The mouse should be vertically used in the game state.



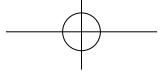
In any game Press the wheel button to pop up the help screen of the current game, in order to show for the user how to play the game. Please refer to the below picture for the help screen:



Help screen of the game



The main interface contains five games: Tennis, Golf, Pingpang, Fishing and Snowball.



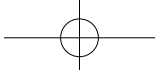
(1) Tennis game



Tennis game

Tennis operation instruction			
No.	Operation	Function	Remarks
1	Wave the mouse upward	Ball toss	The Bluetooth mouse is used as an air mouse
2	Then wave the mouse upward	Serve	
3	B button	Pause the game, call out the interface	
4	Wave the mouse using standard grip	Hit the ball	



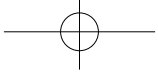


## (2) Golf game



Golf game

Golf operation instruction			
No.	Operation	Function	Remarks
1	The player stands facing the screen and grips the side of the mouse with the right hand to make the mouse head vertical to the ground	Ready for swing	
2	Raise the hand slowly to the right	Raise the golf club up	
3	Keep the above posture without pressing any button (do not over twist your wrist) to wave the mouse for takeaway, and also check the strength bar on the left side of the screen	Take away	
4	Hold down A button	The roles enters the hitting area	
5	Wave the joystick up and down	Switch golf clubs	
6	Wave the joystick to the left and right	Change the direction of the golf shot	
7	B button	Pause	

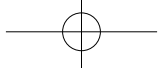


(3) Pingpang game



Pingpang game

Pingpang operation instruction			
No.	Operation	Function	Remarks
1	Wave the mouse upward	Throw the ball up	The Bluetooth mouse is used as an air mouse
2	Then wave the mouse upward	Serve	
3	B button	Pause, call out the interface	
4	Wave the mouse using standard grip	Hit the ball	

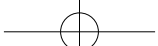


#### (4) Fishing game



Fishing game

Fishing operation instruction			
No.	Operation	Function	Remarks
1	Hold down A button and swing the mouse downward	Throw the line into water	
2	Hold down A button and pull the mouse upward	Withdraw the rod	
3	Toggle the joystick to the left	Move the boat to the left	Have not thrown the line
4	Toggle the joystick to the right	Move the boat to the right	
5	Toggle the joystick up	Move the boat upward	
6	Toggle the joystick down	Move the boat downward	Have thrown the line
7	Toggle the joystick to the left	Turn the rod to the left	
8	Toggle the joystick to the right	Turn the rod to the right	
9	Toggle the joystick up	Move the rod and the boat forward	
10	Toggle the joystick down	Move the rod and the boat backward	
11	B button	Pause	

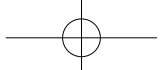



(5) Snowball game



Snowball game

Snowball operation instruction			
No.	Operation	Function	Remarks
1	Hold down A button	Crouch down to pick up a snowball	
2	Hold down A button and wave the mouse	Crouch down to make a snowball	The snowball reaches its maximum size if it is of green light
3	Toggle the joystick to the left	Move the role to the left	
4	Toggle the joystick to the right	Move the role to the right	
5	Toggle the joystick up	Move the role up	
6	Toggle the joystick down	Move the role down	
7	Swing the mouse with huge strength when the role has a snowball in the hand	Throw the snowball with a high parabola	
8	Swing the mouse with moderate strength when the role has a snowball in the hand	Throw the snowball with a low parabola	
9	Hold down B button	Pause	



-  During the game, you can switch at any time to the desktop to use the ordinary mouse or air mouse.

## Cautions

1. When this device is not in use, please place the switch button to OFF and ensure the power indicator is off. If it will not be used for a long period of time, please remove the battery to avoid any damage caused by battery leakage.
2. Don't drop, strike, scratch or beat the device.
3. Keep the device away from fire and heat sources which may easily cause an explosion.
4. Keep the device away from liquid and do not use it in damp conditions, to prevent the fluid from entering the device and causing any damage to its components.
5. Do not let the children replace the battery if no adult is present.
6. Do not disassemble or replace the components (except the battery) by yourself under any circumstances.


## Troubleshooting

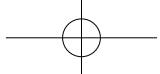
### **Q1: How to operate the game after entering the Motion Drive Game Zone platform?**

A1: Please refer to the "Game Operation Instruction" section of this manual for details.

### **Q2: Why does the mouse sometimes respond several seconds later?**

A2: This is probably because the mouse has entered the sleep mode, and you can press any key on the mouse or move it to return to its normal working state, during which there are several seconds of waiting time.

-  To save energy, the mouse will enter the sleep mode if there is no operation for three minutes when the power is on.



**Q3: Why does the cursor of the mouse that is used as an air mouse float disorderly?**

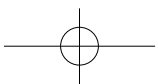
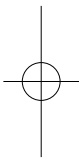
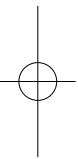
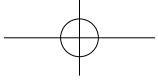
A3: This is probably because your fingers block the lens at the bottom of the mouse when you hold the mouse, which makes its sensor conclude that the mouse works as if on a flat surface; or because there is some calibration problem about the mouse. You can turn over the mouse and place it on the table for ten seconds for further use.

**Q4: Why the mouse sometimes does not work well after some usage?**

A4: If the power is sufficient, then it is probably because you accidentally press the connect button of the mouse during the usage. In this case you only need to install again the mouse in Windows. If the indicator is not on and the optical light flashes or is off, then it may be caused by low battery and can be fixed by replacing the battery.

**Q5: Why does the mouse cursor pause for a while when I press the button in the air?**

A5: Considering that the mouse will inevitably move when it is double clicked in the air, we adopt the technology of short-time single click positioning, which is convenient for the user to use double-click function in the air.



**FCC Statement**

Federal Communications Commission (FCC) requirements, Part 15. This equipment has been tested and found to comply with the limits for a class B digital device, pursuant to part 15 of the FCC Rules. These limits are designed to provide reasonable protection against harmful interference in a residential installation. This equipment generates, uses and can radiate radio frequency energy and, if not installed and used in accordance with the instructions, may cause harmful interference to radio communications. However, there is no guarantee that interference will not occur in a particular installation. If this equipment does cause harmful interference to radio or television reception, which can be determined by turning the equipment off and on, the user is encouraged to try to correct the interference by one or more of the following measures:

- Reorient or relocate the receiving antenna.
- Increase the separation between the equipment and receiver.
- Connect the equipment into an outlet on a circuit different from that to which the receiver is connected.
- Consult the dealer or an experienced radio/TV technician for help.

**CAUTION:**

Any changes of modifications not expressly approved by the grantee of this device could void the user's authority to operate the equipment.

This device complies with Part 15 of the FCC Rules. Operation is subject to the following two conditions: (1) this device may not cause harmful interference, and (2) this device must accept any interference received, including interference that may cause undesired operation.

**IMPORTANT NOTE:**

FCC Radiation Exposure Statement:

This equipment complies with FCC radiation exposure limits set forth for an uncontrolled environment.

End users must follow the specific operating instructions for satisfying RF exposure compliance. This transmitter must not be co-located or operating in conjunction with any other antenna or transmitter.

**IC Statement**

Operation is subject to the following two conditions: 1) this device may not cause interference and 2) this device must accept any interference, including interference that may cause undesired operation of the device.