



x4000b Bluetooth Mouse Quick Setup

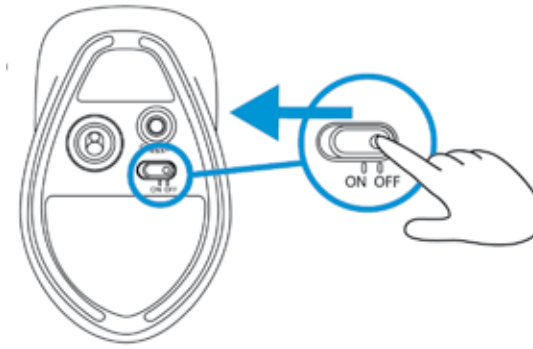


1

A



B



2

To use your Bluetooth mouse, you must first pair it with your computer.

- 1) Turn on the computer and Bluetooth mouse.
- 2) Ensure that your computer has Bluetooth turned on.
- 3) Start the Bluetooth pairing wizard on your computer.

For more information, please follow the instructions in the Bluetooth Pairing User Guide available at <http://www.hp.com/support>

ES To use your Bluetooth mouse, you must first pair it with your computer.

- 1) Turn on the computer and Bluetooth mouse.
- 2) Ensure that your computer has Bluetooth turned on.
- 3) Start the Bluetooth pairing wizard on your computer.

For more information, please follow the instructions in the Bluetooth Pairing User Guide available at <http://www.hp.com/support>

©Copyright 2012 Hewlett-Packard Development Company, L.P.

Printed in China

Version 1.0



696986-001

FR To use your Bluetooth mouse, you must first pair it with your computer.

- 1) Turn on the computer and Bluetooth mouse.
- 2) Ensure that your computer has Bluetooth turned on.
- 3) Start the Bluetooth pairing wizard on your computer.

For more information, please follow the instructions in the Bluetooth Pairing User Guide available at <http://www.hp.com/support>

BR To use your Bluetooth mouse, you must first pair it with your computer.

- 1) Turn on the computer and Bluetooth mouse.
- 2) Ensure that your computer has Bluetooth turned on.
- 3) Start the Bluetooth pairing wizard on your computer.

For more information, please follow the instructions in the Bluetooth Pairing User Guide available at <http://www.hp.com/support>

DE To use your Bluetooth mouse, you must first pair it with your computer.

- 1) Turn on the computer and Bluetooth mouse.

- 2) Ensure that your computer has Bluetooth turned on.
- 3) Start the Bluetooth pairing wizard on your computer.

For more information, please follow the instructions in the Bluetooth Pairing User Guide available at <http://www.hp.com/support>

IT To use your Bluetooth mouse, you must first pair it with your computer.

- 1) Turn on the computer and Bluetooth mouse.
- 2) Ensure that your computer has Bluetooth turned on.
- 3) Start the Bluetooth pairing wizard on your computer.

For more information, please follow the instructions in the Bluetooth Pairing User Guide available at <http://www.hp.com/support>

NL To use your Bluetooth mouse, you must first pair it with your computer.

- 1) Turn on the computer and Bluetooth mouse.
- 2) Ensure that your computer has Bluetooth turned on.
- 3) Start the Bluetooth pairing wizard on your computer.

For more information, please follow the instructions in the Bluetooth Pairing User Guide available at <http://www.hp.com/support>

KO To use your Bluetooth mouse, you must first pair it with your computer.

- 1) Turn on the computer and Bluetooth mouse.
- 2) Ensure that your computer has Bluetooth turned on.
- 3) Start the Bluetooth pairing wizard on your computer.

For more information, please follow the instructions in the Bluetooth Pairing User Guide available at <http://www.hp.com/support>

JA To use your Bluetooth mouse, you must first pair it with your computer.

- 1) Turn on the computer and Bluetooth mouse.
- 2) Ensure that your computer has Bluetooth turned on.
- 3) Start the Bluetooth pairing wizard on your computer.

For more information, please follow the instructions in the Bluetooth Pairing User Guide available at <http://www.hp.com/support>

CN To use your Bluetooth mouse, you must first pair it with your computer.

- 1) Turn on the computer and Bluetooth mouse.
- 2) Ensure that your computer has Bluetooth turned on.
- 3) Start the Bluetooth pairing wizard on your computer.

TW For more information, please follow the instructions in the Bluetooth Pairing User Guide available at <http://www.hp.com/support>

To use your Bluetooth mouse, you must first pair it with your computer.

- 1) Turn on the computer and Bluetooth mouse.
- 2) Ensure that your computer has Bluetooth turned on.
- 3) Start the Bluetooth pairing wizard on your computer.

For more information, please follow the instructions in the Bluetooth Pairing User Guide available at <http://www.hp.com/support>

Federal Communication Commission Interference Statement

This equipment has been tested and found to comply with the limits for a Class B digital device, pursuant to Part 15 of the FCC Rules. These limits are designed to provide reasonable protection against harmful interference in a residential installation. This equipment generates, uses and can radiate radio frequency energy and, if not installed and used in accordance with the instructions, may cause harmful interference to radio communications. However, there is no guarantee that interference will not occur in a particular installation. If this equipment does cause harmful interference to radio or television reception, which can be determined by turning the equipment off and on, the user is encouraged to try to correct the interference by one of the following measures:

- Reorient or relocate the receiving antenna.
- Increase the separation between the equipment and receiver.
- Connect the equipment into an outlet on a circuit different from that to which the receiver is connected.
- Consult the dealer or an experienced radio/TV technician for help.

FCC Caution: Any changes or modifications not expressly approved by the party responsible for compliance could void the user's authority to operate this equipment.

This device complies with Part 15 of the FCC Rules. Operation is subject to the following two conditions: (1) This device may not cause harmful interference, and (2) this device must accept any interference received, including interference that may cause undesired operation.

IMPORTANT NOTE:

Radiation Exposure Statement:

The product comply with the US portable RF exposure limit set forth for an uncontrolled environment and are safe for intended operation as described in this manual. The further RF exposure reduction can be achieved if the product can be kept as far as possible from the user body or reduce output power if it doesn't affect the transmission/receiving quality.

IC Statement

This device complies with RSS-210 of the Industry Canada Rules.

Operation is subject to the following two conditions: (1) This device may not cause harmful interference, and (2) this device must accept any interference received, including interference that may cause undesired operation.

Ce dispositif est conforme a la norme CNR-210 d'Industrie Canada applicable aux appareils radio exempts de licence.

Son fonctionnement est sujet aux deux conditions suivantes: (1) le dispositif ne doit pas produire de brouillage prejudiciable, et (2) ce dispositif doit accepter tout brouillage recu, y compris un brouillage susceptible de provoquer un fonctionnement indesirable.

Radiation Exposure Statement:

The product comply with the Canada portable RF exposure limit set forth for an uncontrolled environment and are safe for intended operation as described in this manual. The further RF exposure reduction can be achieved if the product can be kept as far as possible from the user body or set the device to lower output power if such function is available.

Déclaration d'exposition aux radiations:Le produit est conforme aux limites d'exposition pour les appareils portables RF pour les Etats-Unis et le Canada établies pour un environnement non contrôlé.

Le produit est sûr pour un fonctionnement tel que décrit dans ce manuel. La réduction aux expositions RF peut être augmentée si l'appareil peut être conservé aussi loin que possible du corps de l'utilisateur ou que le dispositif est réglé sur la puissance de sortie la plus faible si une telle fonction est disponible.