

# MoGo MOUSE

## Bluetooth Laptop Mouse Installation Guide



### Use it

like your wireless  
desktop mouse



### Store It

inside a  
PC card slot



### Charge it

automatically

Visit our website at:  
[www.mogomouse.com](http://www.mogomouse.com)  
Features and specifications are  
subject to change without notice.  
2006 Newton Peripherals, LLC  
MG-100-01-0002-01 rev 2

# Newton Peripherals MoGo Mouse<sup>BT</sup>

## Introduction

Congratulations on your purchase of a MoGo Mouse<sup>BT</sup>.

This user's guide describes how to connect and use the MoGo Mouse<sup>BT</sup> to your Laptop.

In addition to this user's guide this package contains:

- Newton Peripherals MoGo Mouse<sup>BT</sup>

## System Requirements

To use the MoGo Mouse<sup>BT</sup>, your computer must meet the following requirements:

### Hardware

- Type II PC card slot
- USB Bluetooth adaptor or embedded Bluetooth

### Operating System

- Bluetooth<sup>®</sup>-enabled Windows<sup>®</sup> 98, Me, 2000, or XP.
- Bluetooth<sup>®</sup>-enabled Macintosh<sup>®</sup> running Mac<sup>®</sup> OS 10.2.8 or later.

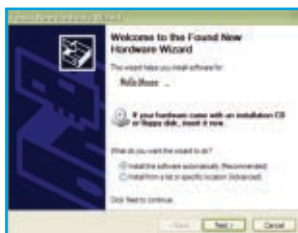
## Charging and Storing

The MoGo Mouse<sup>BT</sup> is equipped with an internal rechargeable battery. It is recommended that before using, you insert the MoGo Mouse<sup>BT</sup> inside your type II PC card slot for charging. The MoGo Mouse<sup>BT</sup> automatically begins to charge when installed. The laptop must be turned on for charging to take place. You should allow up to 60 minutes for initial charging of MoGo Mouse<sup>BT</sup>. Charging status is indicated by either a red light for active charging or a green light for fully charged.

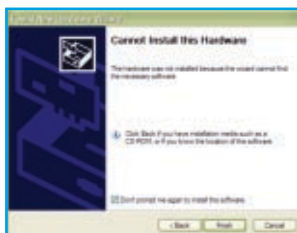


## What to do if the “Found new Hardware Wizard” appears

When inserting the MoGo Mouse<sup>BT</sup> in your computer's PCMCIA slot for the first time, the window below may appear. Though no software is required for the MoGo Mouse<sup>BT</sup> to charge properly, Microsoft Windows will try to load a driver for the MoGo Mouse<sup>BT</sup>. To stop Microsoft Windows from displaying this window follow the steps below. Once completed no other action is required for setting up your laptop for charging.



Check the box to install automatically and click “Next”.



Check the box at the bottom (Don't Prompt me again to install the software) and click finish.

You may see a message appear warning you that the driver was not installed and your device may not work properly. You can ignore this as the MoGo Mouse<sup>BT</sup> does not need a driver to operate properly.

## Pairing your MoGo Mouse<sup>BT</sup> with your laptop

Bluetooth devices require that you initially “pair” your MoGo Mouse<sup>BT</sup> with your laptop. Follow the steps below to prepare your MoGo Mouse<sup>BT</sup> for pairing. Once paired to your laptop the MoGo Mouse<sup>BT</sup> only needs to be turned on for operation with your laptop.

**1. Turn on the MoGo Mouse<sup>BT</sup> by opening kickstand on side of unit with finger.** You may notice a one time RED blink from Optical Sensor on the bottom of the mouse.



**2. Press the “connect” button down until the status light starts flashing blue, every 2 seconds.** Your MoGo Mouse<sup>BT</sup> is now ready to pair to your laptop. It will stay in this state for 3 minutes.

**3. Initiate your laptop Bluetooth to complete pairing your mouse.** In case you are requested to enter a Pass Code or PIN number, simply enter “0000”. MoGo Mouse<sup>BT</sup> does not require such a code to operate. Refer to the owner's manual for specific instructions on pairing your laptop Bluetooth.

Once connected the blue light on the MoGo Mouse<sup>BT</sup> will begin to blink slowly, every 3 seconds.

#### **4. You are ready to MoGo!**

### **Pairing Your MoGo Mouse<sup>BT</sup> with another Laptop**

Your MoGo Mouse<sup>BT</sup> can only be paired with one laptop at a time. Pressing the connect button will break the current pairing and prepare the MoGo Mouse<sup>BT</sup> to be paired with another laptop.

### **Using your MoGo Mouse<sup>BT</sup>**

Since the MoGo Mouse<sup>BT</sup> fits into the Type II PC card slot to store and charge, it needs a kickstand to prop up the back of the mouse to make it functional and ergonomic. To turn it on, open the kickstand from the side. Click the right or left button to activate the connection. Note: initially, you must pair the MoGo Mouse<sup>BT</sup> to the laptop before this can occur.

Turning the MoGo Mouse<sup>BT</sup> off is simple. Collapse/close the kickstand and MoGo Mouse<sup>BT</sup> will automatically turn off.

Leaving the MoGo Mouse<sup>BT</sup> untouched for ten minutes will cause the mouse to fall asleep. Wake it by simply pressing the right or left button. Note: The MoGo Mouse is designed so that leaving it in sleep mode reduces battery use to save battery power.

If the laptop Bluetooth signal becomes unavailable to the mouse, this will also cause the mouse to fall asleep.

If the indicator LED turns solid red, the battery is very low and needs to be recharged.

### **Operating Hints**

For optimal performance and RF reception:

- Avoid using the MoGo Mouse<sup>BT</sup> on a metal surface. Metals, such as iron, aluminum or copper, shield the Bluetooth transmission and may slow down the MoGo Mouse<sup>BT</sup>'s response time or cause the MoGo Mouse<sup>BT</sup> to fail temporarily.
- The MoGo Mouse<sup>BT</sup> will enter a suspend mode at the same time your computer does. To activate the MoGo Mouse<sup>BT</sup>, press any button on your MoGo Mouse<sup>BT</sup>.

- If your computer has a metal case that contains aluminum or magnesium, use the MoGo Mouse<sup>BT</sup> to the side. The display panel may interfere with the Bluetooth signal if you use the MoGo Mouse<sup>BT</sup> directly in front of the computer.
- Glass or mirrored surfaces can result in erratic behavior for all mice using optical technology.
- To maximize battery life, use the MoGo Mouse<sup>BT</sup> on a white, or light colored surface. Dark surfaces cause the MoGo Mouse<sup>BT</sup>'s light emitting diode (LED) light to glow brighter, which causes the battery to discharge more rapidly.

## Specifications

Bluetooth Specification	1.1 and 1.2 compliant
Resolution	500 DPI
Working range	Up to 30 feet (10 m)
RF transmit power Operating	<4 dBm
Battery Voltage	4.2 V
Operating Current	165 mAh Internal Rechargeable
Standby Current	32 mA
Sleep Mode Current	22 mA
Dimensions	.04 mA 3.4 x 2.125" x .21 inches (86 x 54 x 5 mm)
Weight	1.5 oz or 41 grams

## Troubleshooting

### The MoGo Mouse<sup>BT</sup> is not working.

- Make sure that the MoGo Mouse<sup>BT</sup> is charged. Install into type II PC card slot and wait for Green LED indicator.
- Verify that Bluetooth is configured correctly on your computer
  - 1) Click Start/Settings/Control Panel/System/Hardware/Device Manager.
  - 2) Check under 'Bluetooth Devices' that a 'Newton Peripherals MoGo Mouse<sup>BT</sup>' is installed.

### I cannot connect to a paired device.

- Paired Bluetooth devices are displayed in a connection management window of your Bluetooth management application, even if the remote device is out of range or not powered up.
- Verify that the remote member of the pair is within Bluetooth range, and powered up, and then attempt the connection again.

## **I cannot discover Bluetooth services on an un-paired remote device.**

- The remote device may not be powered up or may be out of range.
- Verify that the remote device is powered up.
- Verify that the remote device is in Connectable mode (Bluetooth Configuration Panel > Accessibility tab).
- Perform a Search for Devices to verify that the device is within range.

## **For technical questions, please visit:**

**North America** Email: [supportna@newtonperipherals.com](mailto:supportna@newtonperipherals.com)

**EMEA** Email: [supportemea@newtonperipherals.com](mailto:supportemea@newtonperipherals.com)

**ASIA** Email: [supportasia@newtonperipherals.com](mailto:supportasia@newtonperipherals.com)

## **Product Registration**

Newton Peripherals recommends that you register your Newton Peripherals accessory shortly after purchasing it. To register your Newton Peripherals accessory, go to: <http://www.Newtonperipherals.com/registration/>

You will need to provide your full name, email address, phone number, date purchase, place of purchase and company information (if applicable).

## **Warranty**

Newton Peripherals warrants this product to be free from defects in materials and workmanship for two years from the date of purchase of the Products. The warranty extends only to you if you are the end user with original purchase receipt. We will, at our option, repair or replace the Products that do not conform to the warranty. We may use functionally equivalent reconditioned/refurbished/remanufactured/pre-owned or new Products or parts. If your Newton Peripherals accessory is found to be defective within that time, we will promptly repair or replace it. This warranty does not cover accidental damage, wear and tear, or consequential or incidental loss. Under no conditions is Newton Peripherals liable for loss of, or damage to a computer; nor loss of, or damage to, programs, records, or data; nor any consequential or incidental damages, even if Newton Peripherals has been informed of their possibility. This warranty does not affect your statutory rights.

## **Regulatory Compliance**

This device complies with Part 15 of the FCC Rules. Operation is subject to the following two conditions: (1) This device may not cause harmful interference, and (2) This device must accept any interference received, including interference that may cause undesired operation.

## **FCC Statement**

### **Tested to Comply**

This equipment has been tested and found to comply with the limits of a Class B digital device, pursuant to Part 15 of the FCC Rules. These limits are designed to provide reasonable protection against harmful interference in a residential installation. This equipment generates, uses, and can radiate radio frequency energy and if not installed and used in accordance with the instructions, may cause harmful interference to radio communications. However, there is no guarantee that interference will not occur in a particular installation. If this equipment does cause harmful interference to radio or television reception, which can be determined by turning the equipment off and on, the user is encouraged to try to correct the interference by one or more of the following measures:

- Reorient or relocate the receiving antenna
- Increase the separation between the equipment and receiver
- Move the computer away from the receiver
- Connect the equipment into an outlet on a circuit different from that to which the receiver is connected.

WIDCOMM and the WIDCOMM logo are trademarks of WIDCOMM, Inc. Bluetooth and the Bluetooth logos are trademarks owned by Bluetooth SIG, Inc., U.S.A. and licensed to WIDCOMM, Inc. Microsoft, Windows, Outlook are registered trademarks of Microsoft Corporation. All other trademarks are the property of their respective owners.

FCC Caution: Any changes or modifications not expressly approved by the party responsible for compliance could void the user's authority to operate this equipment.

#### **IMPORTANT NOTE:**

#### **FCC / IC Radiation Exposure Statement**

This equipment complies with FCC / IC RSS-210 radiation exposure limits set forth for an uncontrolled environment. End users must follow the specific operating instructions for satisfying RF exposure compliance. This transmitter must not be co-located or operating in conjunction with any other antenna or transmitter.

IC Caution: Operation is subject to the following two conditions: 1) this device may not cause interference and 2) this device must accept any interference, including interference that may cause undesired operation of the device.

---

Manifold Products is an angel-investor funded, limited liability company headquartered in West Newton, Massachusetts. Manifold was founded in 2002 to develop products and breakthrough product components based upon patented technologies and other forms of intellectual property, resulting in revenue to Manifold from the commercialization of the products via licensing, sale of rights or equity, or sale of products through a subsidiary entity.

Eligible patents and intellectual property are sourced from various innovators including independent inventors, corporations, universities, and others. Selected intellectual property (IP) is acquired by Manifold under terms that assign control of the IP and responsibility for development and marketing of the resulting products to Manifold.

#### **Innovation by Manifold Products LLC**

Your new MoGo Mouse<sup>BT</sup> was conceived and developed by Manifold Products LLC, a "skunk works" product development company founded to innovate products that eliminate product compromises for users.

Manifold Products is focused on designing elegant functionality into intelligent electro-mechanical devices. This result is achieved by an experienced group of designers, engineers, and marketers who thrive in an environment where small company values, efficient work methods, and creativity are practiced.

To learn more go to [www.manifoldproducts.com](http://www.manifoldproducts.com)

# Ready, set...MoGo!

Easy to stow, ready to go



Patent-pending optics provide smooth, accurate performance

Integrated “kickstand” flips out to position MoGo Mouse<sup>BT</sup> comfortably



No batteries to replace — takes just minutes to recharge inside your laptop

Bluetooth operation delivers wireless freedom



©2006 Newton Peripherals, LLC. All Rights Reserved.  
Bluetooth is a registered trademark of Bluetooth SIG.  
All other trademarks and registered trademarks are the property of their respective holders. Patents Pending.

