

Dynex Wireless Optical Mouse

User's Manual

Important safety instructions

- Batteries may explode or leak if they are improperly recharged, inserted, disposed of in fire, or mixed with used or different battery types.
- There is a risk of explosion if a battery is replaced by an incorrect battery type.
- Dispose of used batteries according to local regulations.

Package Contents

This package contains the following:

- Wireless optical mouse
- USB wireless receiver
- Mouse driver CD
- User's manual
- 2 AAA batteries
- 1 Extension cable

System Requirement

- Microsoft Windows 2000, XP, Vista
- Available USB port
- CD-ROM / DVD-ROM

Installing the mouse

- To install the driver:
Insert the enclosed CD into your computer's disk drive and follow the on-screen instructions to install the driver.

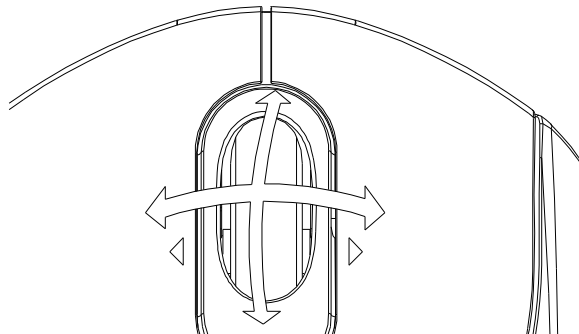


- To connect the mouse:
 1. Open the battery cover
 2. Install the AAA batteries
 3. Close the battery cover and slide power button to ON side
 4. Plug the USB receiver into your computer's USB portThe wireless optical mouse will then be ready to use.

Using the mouse

Using the Tilt Scroll Wheel


The Tilt Scroll Wheel is designed for four-way navigation. You can view whole documents by turning the scroll wheel up, down, left, and right.

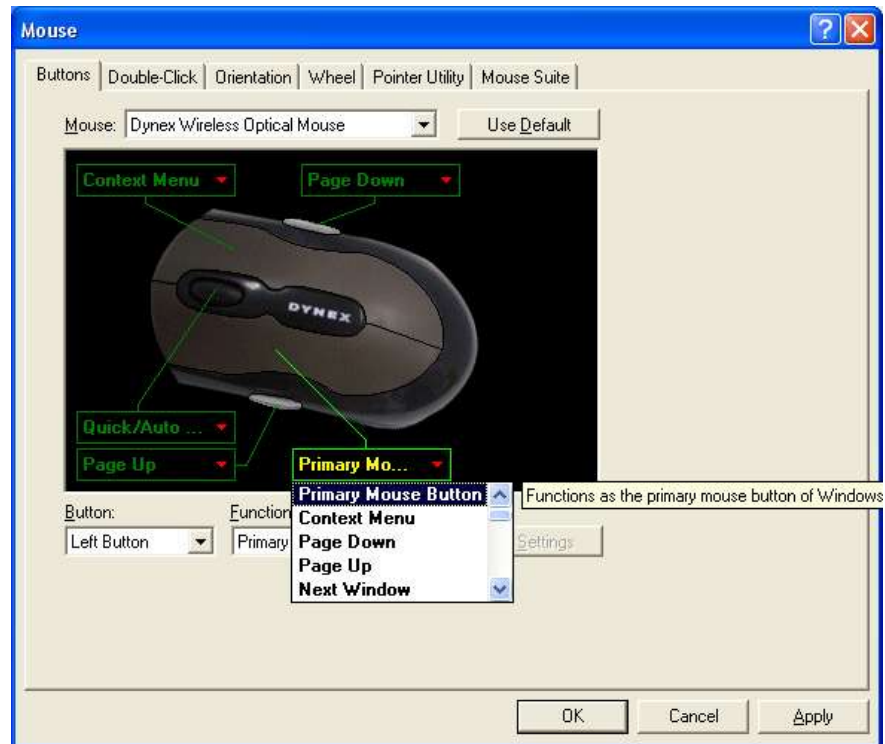


Saving power

You can turn off the mouse power by slide mouse bottom power button to OFF side to extend your battery life.

Programming the mouse

1. Double-click the Mouse Setting icon  in the taskbar.
2. Click the Wheel or Button tab, then select a item to modify the function.



3. Click OK when finished.

Note: The optical technology can precisely detect the mouse motion on most surfaces. Avoid using the optical mouse on a reflective, transparent, metallic, or complex-pattern surface.

Cleaning the mouse

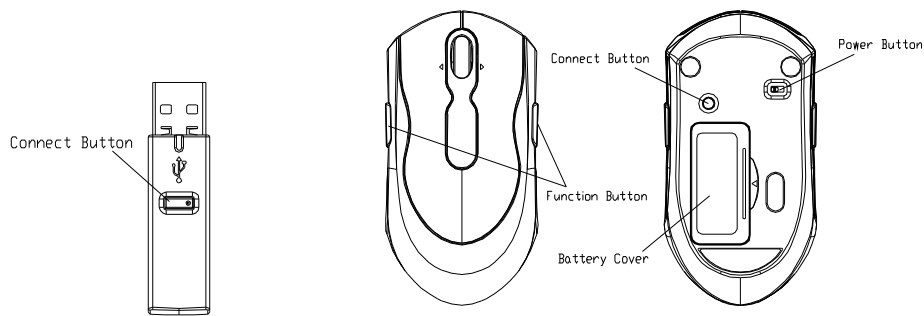
Wipe the bottom of the mouse with a damp, lint-free cloth.

Additional information

If the connection between your mouse and receiver is broken, you can re-link the mouse with the receiver as below step:

1. Press the connect button on the receiver, the LED indicator glitters
2. Press the connect button on the mouse bottom, the mouse is linked with the receiver, and the receiver's LED indicator turns off.

3. If the mouse does not link with the receiver, please repeat above steps



The LED indicator on the USB wireless receiver will become red when the mouse battery become weak. Please change the batteries immediately.

Legal notices

This equipment has been tested and found to comply with the limits for a Class B digital device, pursuant to Part 15 of the FCC Rules. These limits are designed to provide reasonable protection against harmful interference in a residential installation. This equipment generates, uses and can radiate radio frequency energy and, if not installed and used in accordance with the instructions may cause harmful interference to radio communications. However, there is no guarantee that interference will not occur in a particular installation. If this equipment does cause harmful interference to radio or television reception, which can be determined by turning the equipment off and on, the user is encouraged to try to correct the interference by one or more of the following measures:

- ◆ Reorient or relocate the receiving antenna
- ◆ Increase the separation between the equipment and receiver
- ◆ Connect the equipment into an outlet on a circuit different from that to which the receiver is connected.
- ◆ Consult the dealer or an experienced radio/TV technician for help.

Caution:

Any changes or modifications not expressly approved by the party responsible for compliance could void the user's authority to operate this equipment. Shielded interface cable, if any, must be used in order to comply with emission limits.

This device complies with Part 15 of the FCC Rules. Operation is subject to the following two conditions: (1) This device may not cause harmful interference, and (2) This device must accept any interference received, including interference that may cause undesired operation.

The Class B digital apparatus complies with Canadian ICE-003.

California Proposition 65 warning: This product contains chemicals, including lead, known to the State of California to cause cancer, birth defects or reproductive harm.

Copyright

© 2007 Dynex. DYNEX and the DYNEX logo are trademarks of Best Buy Enterprise Services, Inc. Other brands and Product names are trademarks or registered trademarks of their respective holders, Specifications and features are subject to change without notice or obligation.