



Capsule Keyboard Case RF-iCAP23 | Quick Setup Guide



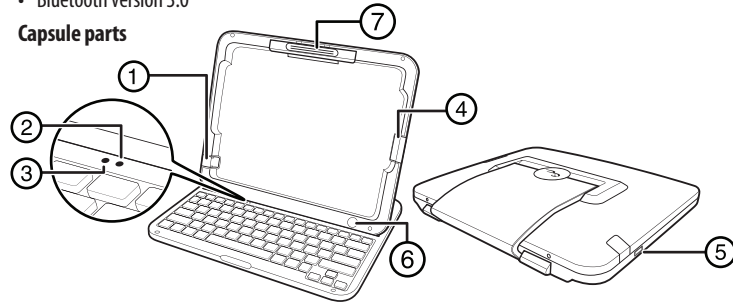
Package contents

- Capsule keyboard
- Ear phone jack spare cover
- USB cable
- Quick Setup Guide

Features

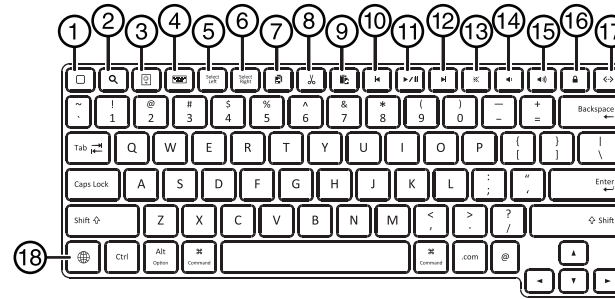
- 82-key design, 18 hot keys for iPad 3rd Generation
- Compatible with Apple iPad 2
- Protective hard shell construction - Enhanced durability and stability
- Smart power management - Auto turn off when closed.
- Bluetooth version 3.0

Capsule parts



#	Component	Description
1	Earphone jack	Remove the rubber piece to connect an earphone to the iPad earphone jack.
2	Battery LED	Orange OFF: Battery full; Orange ON: Battery charging; Orange BLINKING: Battery low
3	Bluetooth connection LED	Blue FAST BLINKING (10 seconds): Re-connecting Blue BLINKING (5 minutes): Searching for devices (pairing) Blue ON (2 seconds): Just connected
4	30-pin connect slot	Slide out the rubber piece to connect the 30-pin connector.
5	Micro USB port	Connect to a USB power supply (e.g. wall charger or computer) with a Micro USB cable to charge Capsule battery.
6	Release button	Push to release the top panel when in typing mode.
7	Latch lock	Slide latch lock upward to install iPad. Release and the iPad will lock into place.

Keyboard



#	Description	#	Description
1	Home button	10	Previous track button
2	Search button	11	Play/Pause button
3	Photo Slide Show button	12	Next track button
4	Virtual Keyboard button	13	Mute button
5	Select Left button	14	Volume down button
6	Select Right button	15	Volume up button
7	Copy button	16	Lock button
8	Cut button	17	Pairing button
9	Paste button	18	International keyboard button

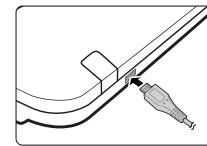
First time use

When you unpack your Capsule keyboard, the internal battery is only partially charged. You should charge it fully before using it.

Charge the battery

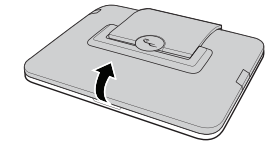
Connect your Capsule keyboard to a computer or the power adapter using the USB cable (provided) to charge the internal battery.

Note: USB cable charging voltage is 4.4v ~ 6.0v. It is recommended that you use iPad chargers or regular computers.

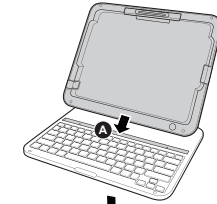


Setting up Capsule keyboard

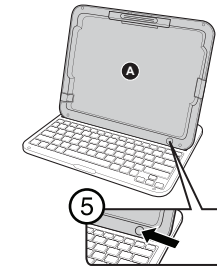
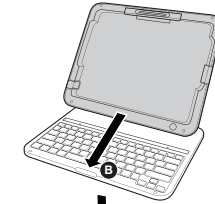
1 Insert a finger into the gap, then lift to open the top panel.



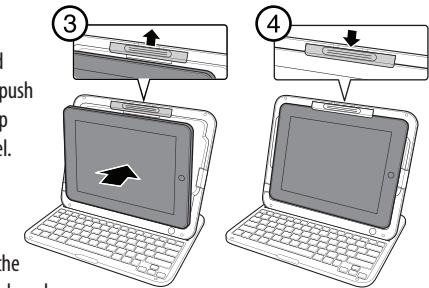
2a For typing mode, align and place the top panel on the gap.



2b For stand mode, pull the top panel forward towards the keyboard.



3 Place the bottom edge of the iPad into the bottom of the top panel, push up on the latch, then move the top edge of the iPad into the top panel.



4 Release the latch to lock the iPad in place.

5 To change out of typing Mode, push the release button and pull the top panel forward towards the keyboard.



Pairing with an iPad

When you open your Capsule keyboard for the first time, it automatically enters discoverable mode and connection LED blinks blue. If not, press the **Bluetooth Pairing** button (button 17) for more than two seconds to pair, then do the following:

- 1 On your iPad, enter Bluetooth settings by going to **Settings > General > Bluetooth**. Turn on Bluetooth. Your iPad searches for devices.
- 2 Select the **Capsule Keyboard Case**.
- 3 When prompted, enter the passkey shown on your iPad using your Capsule keyboard, then press **Enter**.
Once paired, you do not have to pair with the iPad again.

Using the special keys

Button	Description
Home	Press to return to the home screen
Search	Press to search keywords on your iPad or the Internet
Photo slide show	Press to play a photo slide show
Virtual keyboard	Press to activate or deactivate the on-screen keyboard
Select left or Select right	Press to select text
Copy or Cut	Press to copy text
Paste	Press to paste text
Play/Pause	Press to play or pause music playback
Next track or Previous track	Press to listen to the next or the previous song
Volume up or Volume down	Press to adjust the volume
Mute	Press to mute the volume
Lock	Press to switch screen on or off
Bluetooth Pairing	Press to search and pair other devices
International Keyboard button	Press to switch the languages

Smart power management

- 1 When Capsule keyboard is open, it will automatically pair to Bluetooth if you already paired it before.
- 2 When Capsule keyboard is closed, it will enter power saving mode.
- 3 When Capsule keyboard is open but is idle for more than two hours, it will enter power saving mode.
- 4 When Capsule keyboard is open but iPad is turned off or Bluetooth is disabled, it will enter power saving mode.

Legal notices

FCC caution

Changes or modifications not expressly approved by the party responsible for compliance could void the user's authority to operate the equipment.

FCC statement:

This equipment has been tested and found to comply with the limits for a Class B digital device, pursuant to part 15 of the FCC Rules.

These limits are designed to provide reasonable protection against harmful interference in a residential installation. This equipment generates, uses and can radiate radio frequency energy and, if not installed and used in accordance with the instructions, may cause harmful interference to radio communications. However, there is no guarantee that interference will not occur in a particular installation.

If this equipment does cause harmful interference to radio or television reception, which can be determined by turning the equipment off and on, the user is encouraged to try to correct the interference by one or more of the following measures:

- Reorient or relocate the receiving antenna.
- Increase the separation between the equipment and receiver.
- Connect the equipment into an outlet on a circuit different from that to which the receiver is connected.
- Consult the dealer or an experienced radio/TV technician for help.

IC RSS-102 statement:

This equipment complies with Industry Canada radiation exposure limits set forth for an uncontrolled environment.

Cet équipement est conforme à l'exposition aux rayonnements Industry Canada limites établies pour un environnement non contrôlé.

IC RSS-Gen and RSS-210 statement:

This device complies with Industry Canada licence-exempt RSS standard(s).

Operation is subject to the following two conditions: (1) this device may not cause interference, and (2) this device must accept any interference, including interference that may cause undesired operation of the device.

Le présent appareil est conforme aux CNR d'Industrie Canada applicables aux appareils radio exempts de licence. L'exploitation est autorisée aux deux conditions suivantes : (1) l'appareil ne doit pas produire de brouillage, et (2) l'utilisateur de l'appareil doit accepter tout brouillage radioélectrique subi, même si le brouillage est susceptible d'en compromettre le fonctionnement.

One-year limited warranty

Visit www.rocketfishproducts.com for details.

Contact Rocketfish:

For customer service, please call 1-800-620-2790.

www.rocketfishproducts.com

Distributed by Best Buy Purchasing, LLC

7601 Penn Avenue South, Richfield, MN 55423-3645 USA

© 2012 BBY Solutions, Inc., All Rights Reserved. ROCKETFISH is a trademark of BBY Solutions, Inc.

All other products and brand names are trademarks of their respective owners.

Best Buy Imports, S. de R.L. de C.V. Av. Santa Fe 485, Segundo Piso, Colonia Cruz Manca, Programa Parcial de Desarrollo Santa Fe, Delegación Cuajimalpa, Distrito Federal, México 05349

© 2012 Best Buy UK Distributions Limited. All rights reserved. Distributed by Best Buy Europe Distributions Limited. 1 Portal Way, London W3 6RS

