

OMEN

by 



L53876-B21

2098 Chardon
Forest Dr.
Suite 1102
Spring, TX 77379
832 717 4331

Color Side 1:
BLACK
Color Side 2:
BLACK

Flat size:
8.5 x 22 in.
Finished size:
4.25 x 4.4 in.

Fold 1:
S-panel
spaceliner

Fold 2:
in Half

RMN/型號/型号: HSA-P001MP

© Copyright 2019 HP Development Company, L.P.

The information contained herein is subject to change without notice. The only warranties for HP products and services are set forth in the express warranty statements accompanying such products and services. Nothing herein should be construed as constituting an additional warranty. HP shall not be liable for technical or editorial errors or omissions contained herein.

First Edition: April 2019

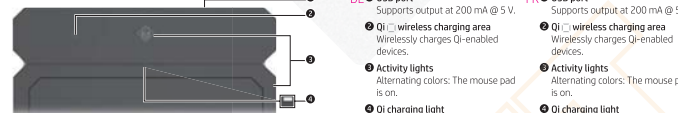
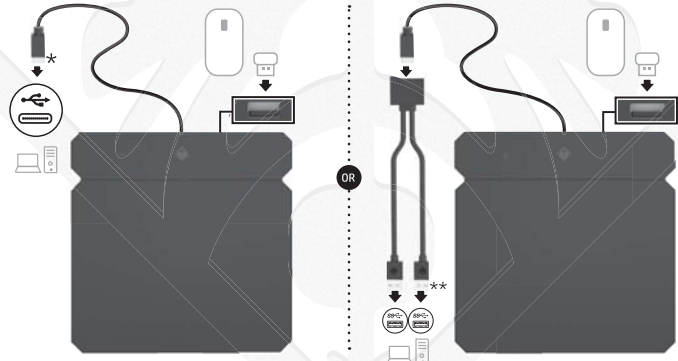
Printed in China

Imprimé en Chine

Stampato in Cina

Impreso en China

중화인민
공화국에서 인쇄



EN **USB port**
Supports output at 200 mA @ 5 V.

Qi wireless charging area
Wirelessly charges Qi-enabled devices.

Activity lights
Alternating colors: The mouse pad is on.

Qi charging light
Solid amber: The device is charging. Slow blinking amber: The alignment between the device being charged and the charging area needs to be adjusted. Quick blinking amber: A metal or magnetic object on the wireless charging area needs to be removed. *For full functionality, connect to a 15 W USB Type-C port. **Connect both cables to USB SuperSpeed ports. If you are using the adapter, the logo is the only activity light supported.

BC **USB port**
Supports output at 200 mA @ 5 V.

Qi wireless charging area
Wirelessly charges Qi-enabled devices.

Activity lights
Alternating colors: The mouse pad is on.

Qi charging light
Solid amber: The device is charging. Slow blinking amber: The alignment between the device being charged and the charging area needs to be adjusted. Quick blinking amber: A metal or magnetic object on the wireless charging area needs to be removed. *For full functionality, connect to a 15 W USB Type-C port. **Connect both cables to USB SuperSpeed ports. If you are using the adapter, the logo is the only activity light supported.

DE **USB port**
Supports output at 200 mA @ 5 V.

Qi wireless charging area
Wirelessly charges Qi-enabled devices.

Activity lights
Alternating colors: The mouse pad is on.

Qi charging light
Solid amber: The device is charging. Slow blinking amber: The alignment between the device being charged and the charging area needs to be adjusted. Quick blinking amber: A metal or magnetic object on the wireless charging area needs to be removed. *For full functionality, connect to a 15 W USB Type-C port. **Connect both cables to USB SuperSpeed ports. If you are using the adapter, the logo is the only activity light supported.

FR **USB port**
Supports output at 200 mA @ 5 V.

Qi wireless charging area
Wirelessly charges Qi-enabled devices.

Activity lights
Alternating colors: The mouse pad is on.

Qi charging light
Solid amber: The device is charging. Slow blinking amber: The alignment between the device being charged and the charging area needs to be adjusted. Quick blinking amber: A metal or magnetic object on the wireless charging area needs to be removed. *For full functionality, connect to a 15 W USB Type-C port. **Connect both cables to USB SuperSpeed ports. If you are using the adapter, the logo is the only activity light supported.

AR **USB port**
Supports output at 200 mA @ 5 V.

Qi wireless charging area
Wirelessly charges Qi-enabled devices.

Activity lights
Alternating colors: The mouse pad is on.

Qi charging light
Solid amber: The device is charging. Slow blinking amber: The alignment between the device being charged and the charging area needs to be adjusted. Quick blinking amber: A metal or magnetic object on the wireless charging area needs to be removed. *For full functionality, connect to a 15 W USB Type-C port. **Connect both cables to USB SuperSpeed ports. If you are using the adapter, the logo is the only activity light supported.

CS **USB port**
Supports output at 200 mA @ 5 V.

Qi wireless charging area
Wirelessly charges Qi-enabled devices.

Activity lights
Alternating colors: The mouse pad is on.

Qi charging light
Solid amber: The device is charging. Slow blinking amber: The alignment between the device being charged and the charging area needs to be adjusted. Quick blinking amber: A metal or magnetic object on the wireless charging area needs to be removed. *For full functionality, connect to a 15 W USB Type-C port. **Connect both cables to USB SuperSpeed ports. If you are using the adapter, the logo is the only activity light supported.

ES **USB port**
Supports output at 200 mA @ 5 V.

Qi wireless charging area
Wirelessly charges Qi-enabled devices.

Activity lights
Alternating colors: The mouse pad is on.

Qi charging light
Solid amber: The device is charging. Slow blinking amber: The alignment between the device being charged and the charging area needs to be adjusted. Quick blinking amber: A metal or magnetic object on the wireless charging area needs to be removed. *For full functionality, connect to a 15 W USB Type-C port. **Connect both cables to USB SuperSpeed ports. If you are using the adapter, the logo is the only activity light supported.

HR **USB port**
Supports output at 200 mA @ 5 V.

Qi wireless charging area
Wirelessly charges Qi-enabled devices.

Activity lights
Alternating colors: The mouse pad is on.

Qi charging light
Solid amber: The device is charging. Slow blinking amber: The alignment between the device being charged and the charging area needs to be adjusted. Quick blinking amber: A metal or magnetic object on the wireless charging area needs to be removed. *For full functionality, connect to a 15 W USB Type-C port. **Connect both cables to USB SuperSpeed ports. If you are using the adapter, the logo is the only activity light supported.

ID **USB port**
Supports output at 200 mA @ 5 V.

Qi wireless charging area
Wirelessly charges Qi-enabled devices.

Activity lights
Alternating colors: The mouse pad is on.

Qi charging light
Solid amber: The device is charging. Slow blinking amber: The alignment between the device being charged and the charging area needs to be adjusted. Quick blinking amber: A metal or magnetic object on the wireless charging area needs to be removed. *For full functionality, connect to a 15 W USB Type-C port. **Connect both cables to USB SuperSpeed ports. If you are using the adapter, the logo is the only activity light supported.

DA **USB port**
Supports output at 200 mA @ 5 V.

Qi wireless charging area
Wirelessly charges Qi-enabled devices.

Activity lights
Alternating colors: The mouse pad is on.

Qi charging light
Solid amber: The device is charging. Slow blinking amber: The alignment between the device being charged and the charging area needs to be adjusted. Quick blinking amber: A metal or magnetic object on the wireless charging area needs to be removed. *For full functionality, connect to a 15 W USB Type-C port. **Connect both cables to USB SuperSpeed ports. If you are using the adapter, the logo is the only activity light supported.

EL **USB port**
Supports output at 200 mA @ 5 V.

Qi wireless charging area
Wirelessly charges Qi-enabled devices.

Activity lights
Alternating colors: The mouse pad is on.

Qi charging light
Solid amber: The device is charging. Slow blinking amber: The alignment between the device being charged and the charging area needs to be adjusted. Quick blinking amber: A metal or magnetic object on the wireless charging area needs to be removed. *For full functionality, connect to a 15 W USB Type-C port. **Connect both cables to USB SuperSpeed ports. If you are using the adapter, the logo is the only activity light supported.

IT **USB port**
Supports output at 200 mA @ 5 V.

Qi wireless charging area
Wirelessly charges Qi-enabled devices.

Activity lights
Alternating colors: The mouse pad is on.

Qi charging light
Solid amber: The device is charging. Slow blinking amber: The alignment between the device being charged and the charging area needs to be adjusted. Quick blinking amber: A metal or magnetic object on the wireless charging area needs to be removed. *For full functionality, connect to a 15 W USB Type-C port. **Connect both cables to USB SuperSpeed ports. If you are using the adapter, the logo is the only activity light supported.

Federal Communications Commission notice
This equipment has been tested and found to comply with the requirements for Class B digital devices pursuant to part 15 of the FCC rules. These devices can cause interference if not properly installed, used, or maintained. This equipment generates, absorbs, and radiates radio frequency energy and, if not installed, used, or maintained with the instructions, may cause harmful interference to radio communications. It is recommended that you do not use this equipment near a particular residence.
If the equipment does not meet the FCC requirements to operate in certain regions, which may be determined by the equipment manufacturer, the user may be required to connect the equipment to a power source that is not a standard household outlet.
* Connect to a power source that is not a standard household outlet.
** Connect to a power source that is not a standard household outlet.
*** Connect to a power source that is not a standard household outlet.
© 2019 HP Development Company, L.P.
All rights reserved.
HP, the HP logo, and the Omen logo are registered trademarks or trademarks of HP Development Company, L.P. in the United States and other countries.
1. The design may vary without notice.
2. The design may vary without notice between different regions.
3. The design may vary without notice between different HP models.
© 2019 HP Development Company, L.P.
All rights reserved.
HP, the HP logo, and the Omen logo are registered trademarks or trademarks of HP Development Company, L.P. in the United States and other countries.
1. The design may vary without notice.
2. The design may vary without notice between different regions.
3. The design may vary without notice between different HP models.

Modifications
The FCC requires the user to be notified that no changes or modifications may be made to this equipment without the express approval of HP. HP may not be held liable for operation of this equipment.