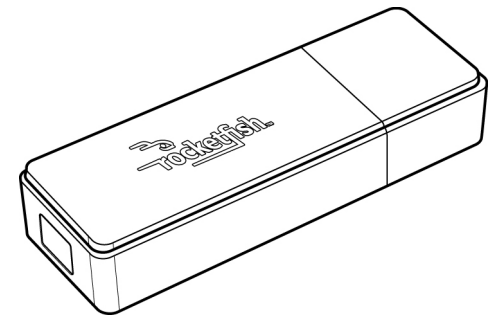


---

# **Full size BT Adapter User's Guide**

---



## Table of Contents

|  |           |
|--|-----------|
| <b>INTRODUCTION</b> .....                              | <b>1</b>  |
| <b>PACKAGE CONTENTS</b> .....                          | <b>1</b>  |
| <b>PC REQUIREMENTS</b> .....                           | <b>1</b>  |
| <b>CONNECTING TO PC</b> .....                          | <b>2</b>  |
| <b>INSTALLING THE BLUETOOTH SOFTWARE (VISTA)</b> ..... | <b>3</b>  |
| <b>USING THE BLUETOOTH SOFTWARE (VISTA)</b> .....      | <b>7</b>  |
| <b>CONNECTING BLUETOOTH DEVICE (VISTA)</b> .....       | <b>9</b>  |
| <b>INSTALLING THE BLUETOOTH SOFTWARE (XP)</b> .....    | <b>12</b> |
| <b>USING THE BLUETOOTH SOFTWARE (XP)</b> .....         | <b>16</b> |
| <b>CONNECTING BLUETOOTH DEVICE (XP)</b> .....          | <b>20</b> |
| <b>UNINSTALLING THE SOFTWARE</b> .....                 | <b>25</b> |
| <b>WINDOWS XP</b> .....                                | <b>25</b> |
| <b>WINDOWS VISTA</b> .....                             | <b>25</b> |
| <b>TROUBLESHOOTING</b> .....                           | <b>26</b> |

## Introduction

Congratulations on your purchase of this high-quality Rocketfish product. Your Full-size BT Adapter is designed for reliable and trouble-free performance.

### **Package Contents**

USB Bluetooth adapter x 1

Installation CD x 1 (includes Bluetooth software and User's Guide)

User's Guide x 1

### **PC Requirements**

Pentium processor or equivalent

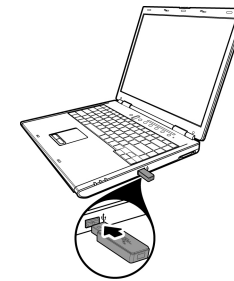
At least one USB port (USB 2.0 or 1.1)

CD-ROM drive

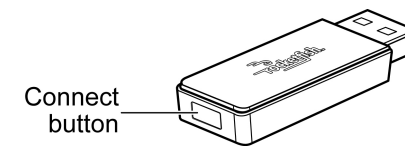
Operating System: Windows® 2000, Windows® XP with Service Pack 1 or higher, Windows® Vista.

## Connecting to PC

1. Find an available USB port on your PC.
2. Remove the cap from the adapter and plug in the Bluetooth adapter as shown.



- If your adapter does not connect automatically, press and hold the Connect button to establish a connection.

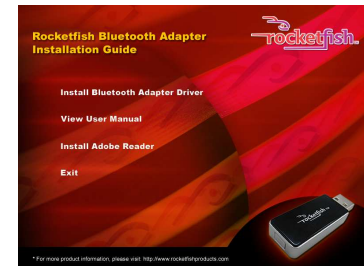


## Installing the Bluetooth Software (Vista)

Before installing the Bluetooth software, plug the USB Bluetooth adapter into a USB port of your computer. If not, a warning message will appear and prompt you to plug the USB Bluetooth adapter into a USB port during the installation.

The following procedures are based on Windows Vista operating system.

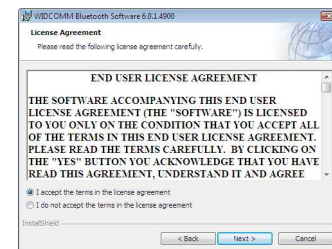
1. Insert the provided Installation CD in the CD ROM drive.
2. The Bluetooth software loads automatically. If the program does not start automatically, open Windows Explorer, browse the Vista folder on the CD, then double-click **Setup.exe**.
3. The Installation Guide screen opens. Click **Install Bluetooth Adapter** to begin installation.



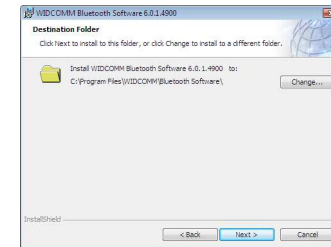
4. The welcome screen appears. Click **Next** to begin installation.



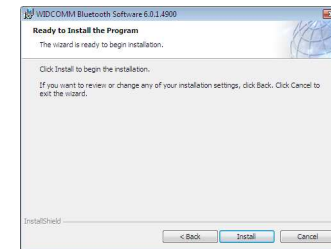
5. Read the agreement and select ***I accept the terms in the license agreement.*** Click **Next** to continue.



6. The program will be installed in the folder as shown. Click **Change** to install in a different directory. Click **Next** to continue.



7. Click **Install** to start the installation. The installation may take some time to complete.



**Note:** If the **"Bluetooth device not found"** message appears, plug the USB Bluetooth adapter into a USB port of your computer and click **OK**.

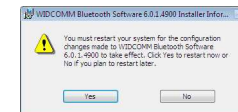


The **Found New Hardware Wizard** starts installing the components for the USB Bluetooth adapter.

8. The following screen appears to indicate installation is complete.



9. Click **Yes** to restart your computer and for the new settings to take effect.





## Using the Bluetooth Software (Vista)

After you have completed the driver and software installation and reboot your computer, a Bluetooth icon will appear on your desktop and in the bottom right hand corner of your desktop screen (systray). The Bluetooth icon gives you access to the Bluetooth shortcut menu and Bluetooth Devices, for configuring your Bluetooth settings.



Right click the Bluetooth icon to display the shortcut menu.



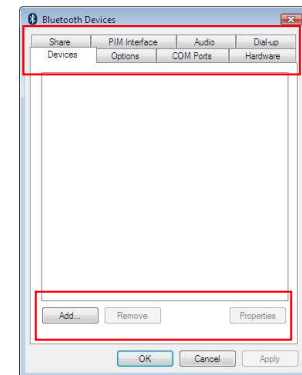
- Add a Bluetooth Device: Click to add a new Bluetooth device.
- Show Bluetooth Devices: Click to show all detected Bluetooth devices.
- Send a File: Click to send a file using Bluetooth File Sharing.
- Receive a File: Click to receive a file using Bluetooth File Sharing.
- Join a Personal Area Network: Click to join a private Bluetooth network.
- Open Bluetooth Settings: Click to open the Bluetooth Devices screen.

- Remove Bluetooth Icon: Click to remove the Bluetooth icon from the system tray.
- Double click the Bluetooth icon for access to Bluetooth Devices.

You can manage all your Bluetooth connections and settings from the Bluetooth Devices screen.

Use the tabs at the top of the screen to navigate the Bluetooth Devices screen.

Click **OK** to confirm a setting, and close the screen, click **Cancel** to cancel any changes, and click **Apply** to confirm a setting without closing the screen.

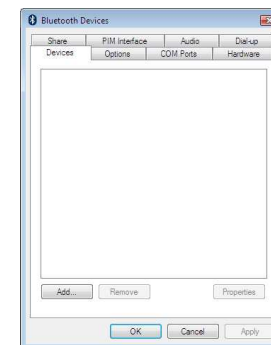


## Connecting Bluetooth Device (Vista)

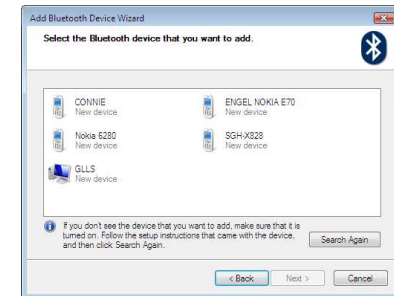
Before connecting the Bluetooth make sure that:

- You have installed and configured the Bluetooth software.
- You have plugged the Bluetooth adapter in a USB port on your computer.

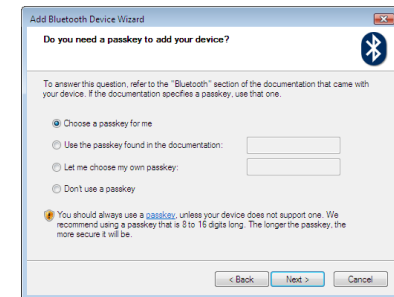
1. Right-click the Bluetooth icon  on the toolbar, then click **Show Bluetooth Devices**. The Bluetooth Devices dialog box opens.



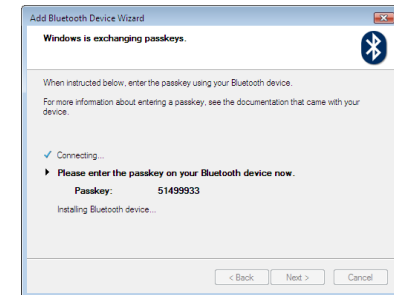
2. Click **Add** to search for Bluetooth devices. When a Bluetooth device is found, the Add Bluetooth Device Wizard dialog box opens.



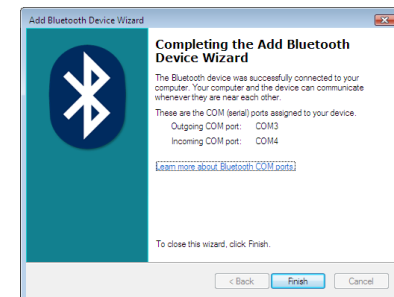
3. If more than one Bluetooth device is found, click the device you want to connect to and click **Next**. The Passkey dialog box opens.



4. Select your Passkey option and click **Next**. The Exchange passkey dialog box opens if you choose to use a passkey.



5. Enter the passkey on your Bluetooth device to start the connection.



## Installing the Bluetooth Software (XP)

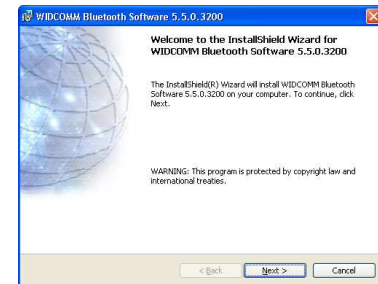
Before installing the Bluetooth software, plug the USB Bluetooth adapter into a USB port of your computer. If not, a warning message will appear and prompt you to plug the USB Bluetooth adapter into a USB port during the installation.

The following procedures are based on Windows XP operating system.

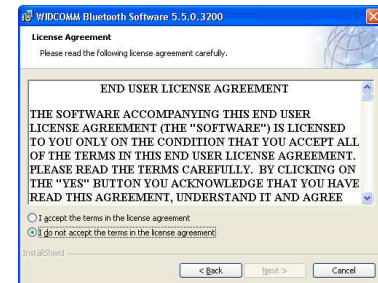
1. Insert the provided Installation CD in the CD ROM drive.
2. The Bluetooth software loads automatically. If the program does not start automatically, open Windows Explorer, browse the Vista folder on the CD, then double-click **Setup.exe**.
3. The Installation Guide screen opens. Click **Install Bluetooth Adapter Driver** to begin installation.



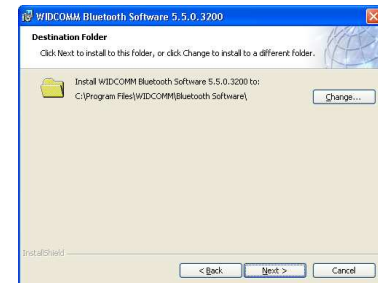
4. The welcome screen appears. Click **Next** to begin installation.



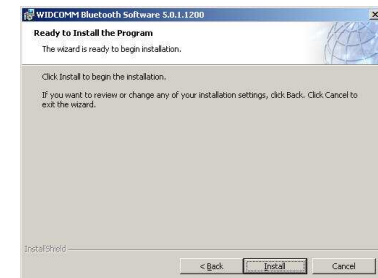
5. Read the agreement and select "**I accept the terms in the license agreement**". Click **Next** to continue.



6. The program will be installed in the folder as shown. Click **Change** to install in a different directory. Click **Next** to continue.



7. Click **Install** to start the installation. The installation may take some time to complete.





**Note:** If the **"Bluetooth device not found"** message appears, plug the USB Bluetooth adapter into a USB port of your computer and click **OK**.



The **Found New Hardware Wizard** starts installing the components for the USB Bluetooth adapter.

8. The following screen appears to indicate installation is complete.



## Using the Bluetooth Software (XP)

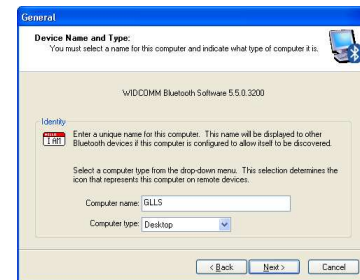
To start using the Bluetooth software, double click **My Bluetooth Places** on the desktop or the Bluetooth icon in the system tray.



1. The Initial Bluetooth Configuration Wizard launches. Click the locations where you want the icon to appear, then click **Next**.



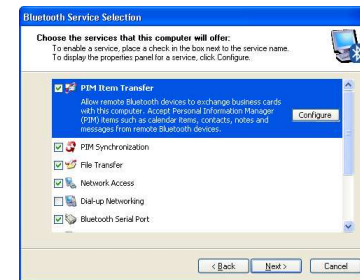
- For first time users, enter a name and select either **Laptop Computer** or **Desktop Computer** from the drop-down menu for your computer. Click **Next** to continue.



- Click **Next** to continue. The Service Selection screen opens.



4. Make sure that each Bluetooth service that you want to use has a check mark, then click **Next**. The connection setup screen opens.



5. If you want to set up a Bluetooth connection, make sure that the Bluetooth device is in pairing mode, then click **Next**. Or, if you do not want to set up Bluetooth connections, click **Skip**.



6. Once configuration is complete, click **Finish**.



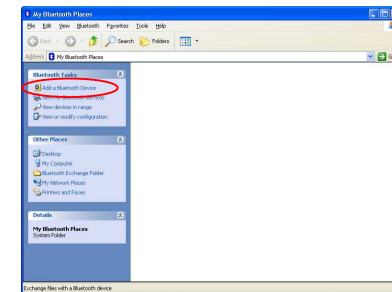
## Connecting Bluetooth Device (XP)

Before connecting the Bluetooth makes sure that:

- You have installed and configured the Bluetooth software.
- You have plugged the Bluetooth adapter in a USB port on your computer.

To connect with the Bluetooth devices, such as printers, modems, and PDAs, you can use the **Bluetooth Set Wizard** to set up a connection. Open the **Bluetooth Set Wizard** in **My Bluetooth Places** window.

1. Click **Add a Bluetooth Device** to begin.



2. Click **Next** to continue.



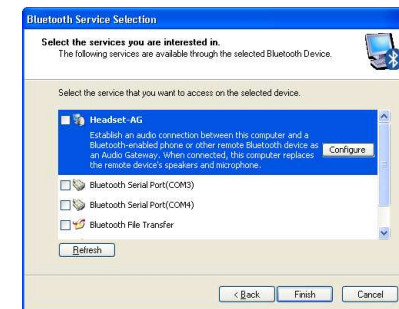
3. The discovered Bluetooth devices are shown on the screen. Select a device and click **Next** to continue.



4. The following Security Setup screen appears. Type the digits shown on the screen to connect the device.



5. Select the services to enable and click **Next**.

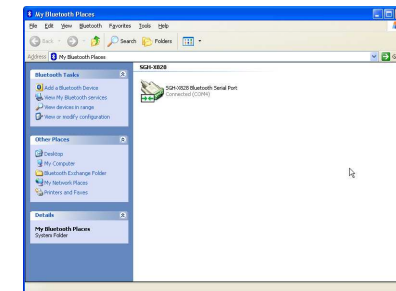




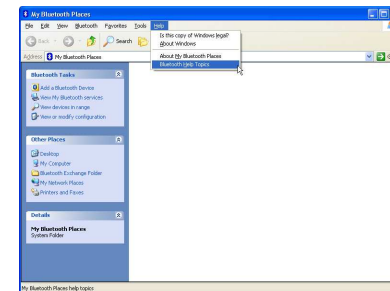
6. Enter the name for your Bluetooth device and choose if you want to create shortcut and restart wizard.



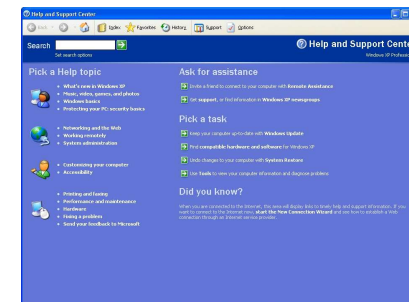
7. Your Bluetooth device is now connected. Click the shortcut to start using the device.



For detailed connection settings, refer to the Help file in the **My Bluetooth Places** window. Click **Help > Bluetooth Help Topics** to open the Help file.



Or press **F1** to open **Microsoft Windows® XP Help and Support Center** and search for Bluetooth. You can find instructions on how to connect other devices.



## Uninstalling the Software

### Windows XP


1. Unplug the Bluetooth adapter.
2. Click **Start**, and then click **Control Panel**. The Control Panel opens.
3. Click **Add or Remove Programs**. The Add or Remove Programs window opens.
4. Click **WIDCOMM Bluetooth Software**, then click **Remove**.

### Windows Vista

1. Unplug the Bluetooth adapter.
2. Click **Start**, then click **Control Panel**. The Control Panel opens.
3. Under Programs, click **Uninstall a program**. The Program and Features window opens.
4. Click **WIDCOMM Bluetooth Software**.
5. When a message asks you if you want to uninstall the software, click **Yes**.

## Troubleshooting

**If you experience problems connecting a Bluetooth device:**

1. Double-click **My Bluetooth Places** on the Windows desktop or click the Bluetooth icon  on the toolbar. The My Bluetooth Places window opens.
2. Click **Help** in the menu bar at the top of the window, then click **Bluetooth Help Topics**. The Bluetooth help file opens.

### **Federal Communication Commission Interference Statement**

This equipment has been tested and found to comply with the limits for a Class B digital device, pursuant to Part 15 of the FCC Rules. These limits are designed to provide reasonable protection against harmful interference in a residential installation. This equipment generates, uses and can radiate radio frequency energy and, if not installed and used in accordance with the instructions, may cause harmful interference to radio communications. However, there is no guarantee that interference will not occur in a particular installation. If this equipment does cause harmful interference to radio or television reception, which can be determined by turning the equipment off and on, the user is encouraged to try to correct the interference by one of the following measures:

- Reorient or relocate the receiving antenna.
- Increase the separation between the equipment and receiver.
- Connect the equipment into an outlet on a circuit different from that to which the receiver is connected.
- Consult the dealer or an experienced radio/TV technician for help.

This device complies with Part 15 of the FCC Rules. Operation is subject to the following two conditions: (1) This device may not cause harmful interference, and (2) this device must accept any interference received, including interference that may cause undesired operation.

*FCC Caution:* Any changes or modifications not expressly approved by the party responsible for compliance could void the user's authority to operate this equipment.

**IMPORTANT NOTE:**

**FCC Radiation Exposure Statement:**

This equipment complies with FCC radiation exposure limits set forth for an uncontrolled environment. End users must follow the specific operating instructions for satisfying RF exposure compliance.

This transmitter must not be co-located or operating in conjunction with any other antenna or transmitter.

**IC Statement**

Operation is subject to the following two conditions: 1) this device may not cause interference and 2) this device must accept any interference, including interference that may cause undesired operation of the device.