

## User Guide of Bluetooth USB Adapter

Owner:                      Wendy Oy  
Document ID:  
Version:                    0.1  
Status:                     Draft

**Copyright© 2005 PRIMAX Electronics. All rights reserved. This material, including documentation and any related computer programs, is protected by copyright controlled by PRIMAX Electronics. All rights are reserved. Copying, including reproducing, storing, adapting or translating, any or all of this material requires the prior written consent of PRIMAX Electronics. This material also contains confidential information, which may not be disclosed to others without the prior written consent of PRIMAX Electronics.**

### Change History

Version	Date	Status	Handled by	Comments
0.1	28.Oct.05	Draft	Wendy Oy	For Toshiba Version 3.03.10©

### References

N/A

## Contents

1. SPECIFICATION.....	4
2. BLUETOOTH USB ADAPTER QUICK START .....	5
2.1. Include in this package.....	5
2.2. System Requirements.....	5
2.2.1. Hardware Requirements.....	5
2.2.2. Operating System Requirements .....	5
2.3. Registration.....	5
3. INSTALLATION INSTRUCTIONS.....	6
3.1. Windows Users Installation .....	6
3.2. Mac OS X users ( 10.2.8 or later ).....	10
4. DECLARATION.....	11
4.1. Federal Communications Commission Radio Frequency Interference Statement .....	11
4.2. Declaration of Conformity Compliance Statement for the Primax BT dongle .....	11

## 1. Specification

Communication Method :Bluetooth standard

- Frequency :2400 ~ 2483.5 MHz
- Power Requirements :5V DC
- Operation Temperature Range :-5°C to +50°C

## **2. Bluetooth USB Adapter Quick Start**

### **2.1. Include in this package**

- Bluetooth USB Adapter
- CD-ROM with Bluetooth software and manual
- This quick start guide

### **2.2. System Requirements**

#### **2.2.1. Hardware Requirements**

- PC with a Pentium process or equivalent or any Macintosh computer running OS 10.2.8 or later
- Available USB port ( USB 2.0 or 1.1 )
- CD-ROM drive

#### **2.2.2. Operating System Requirements**

- Windows 98 Second Edition
- Windows ME
- Windows XP Professional (Service Pack 1 or above )
- Windows XP Home (Service Pack 1 or above)
- Windows 2000 Professional (Service Pack 3 or Above)
- Mac OS 10.2.8 or later

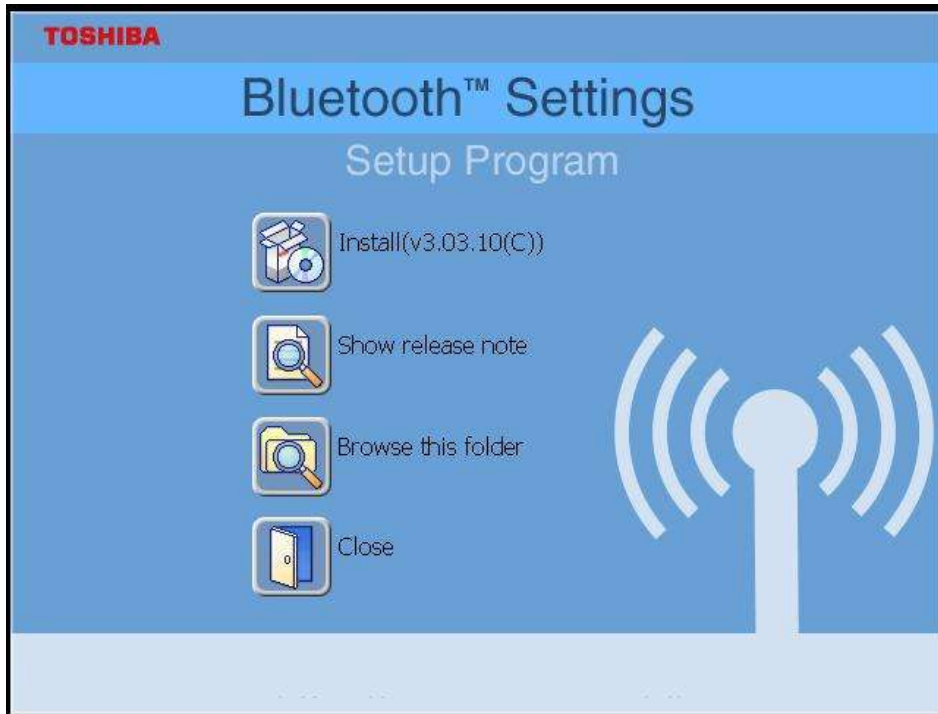
### **2.3. Registration**

Please read this Quick Start guide to learn valuable information about the proper use and installation of your new Bluetooth USB adapter.

### 3. Installation Instructions

#### 3.1. Windows Users Installation

- Step1: Put the installation CD in your CD drive.



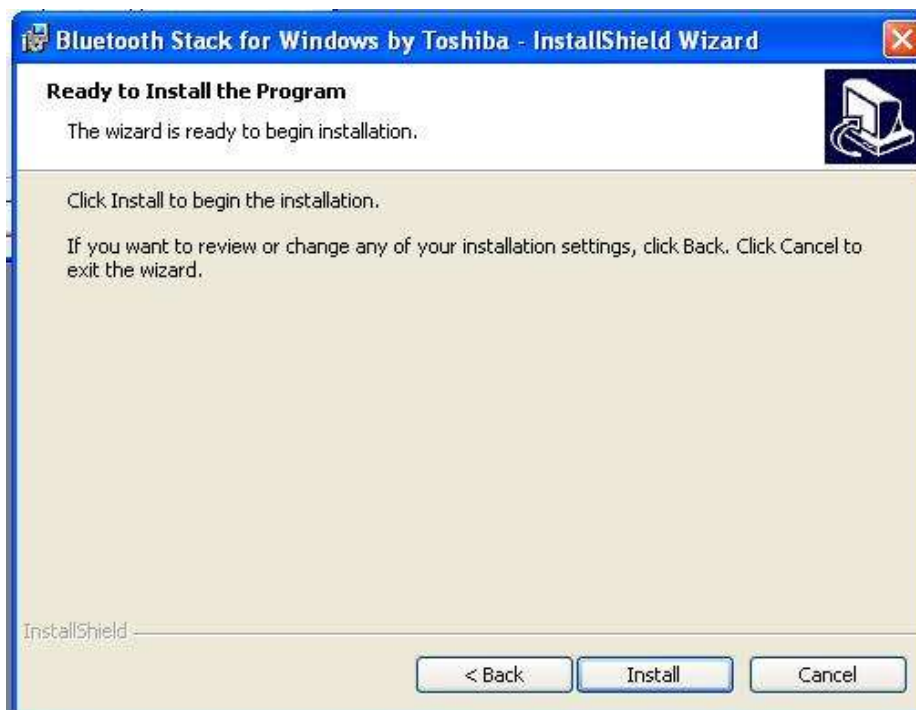
- Step2: Click "Installation" button to Start Install Process (If CD does not auto play, select **Start > Run ...** and type: D:\Setup.exe, where 'D' is the letter of your CD drive)



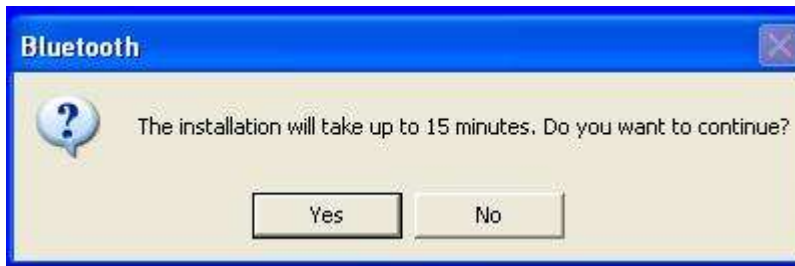
- Step3: Click “Next” to begin



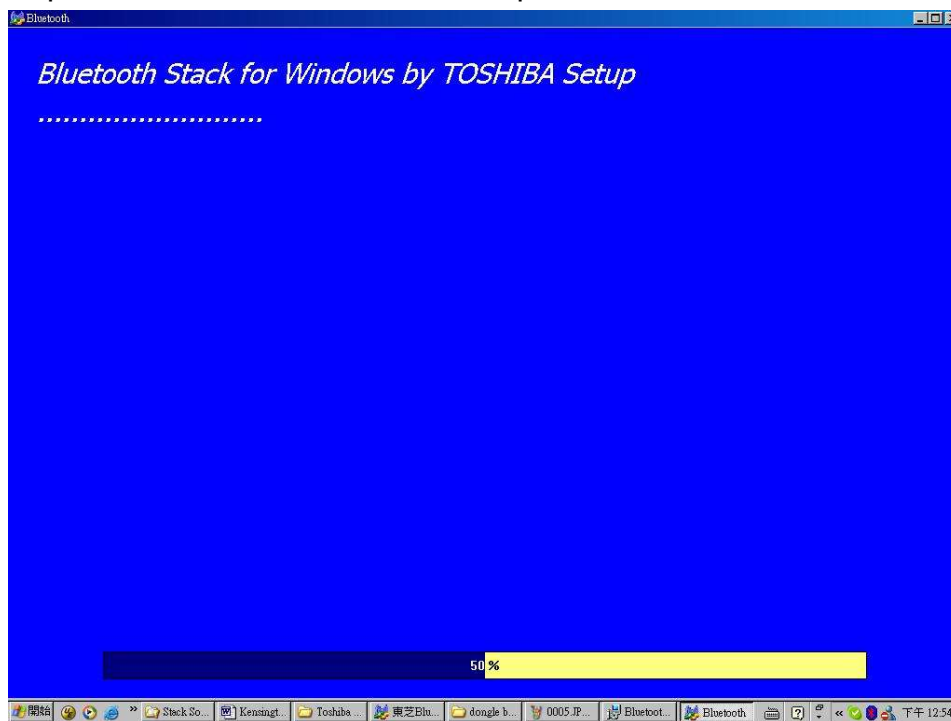
- Step4: Select “I accept the terms in the license agreement”, and click “Next”



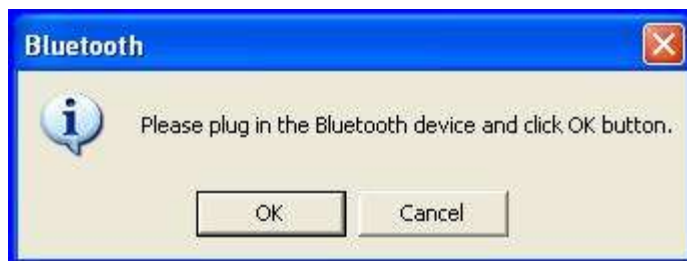
- Step5: Click “Install” to Begin Installing the software. A status window shows the progress of the installation.



- Step6: Click “Yes” to continue install process



- Step7: Click “OK” to continue



---

Note: If this warning appears, plug the Bluetooth USB adapter into an available USB port.

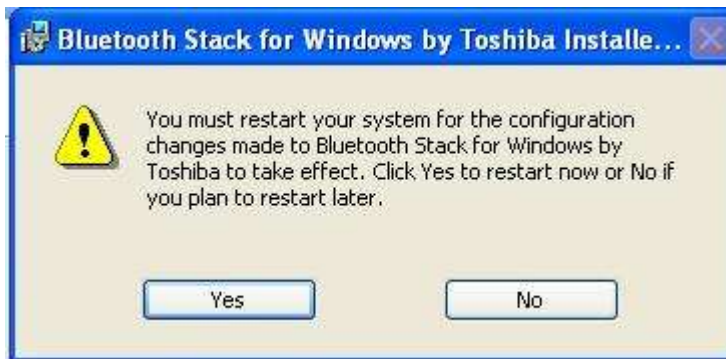
---



- Step8: Click “Finish” and then click “Exit “on the main CD contents screen

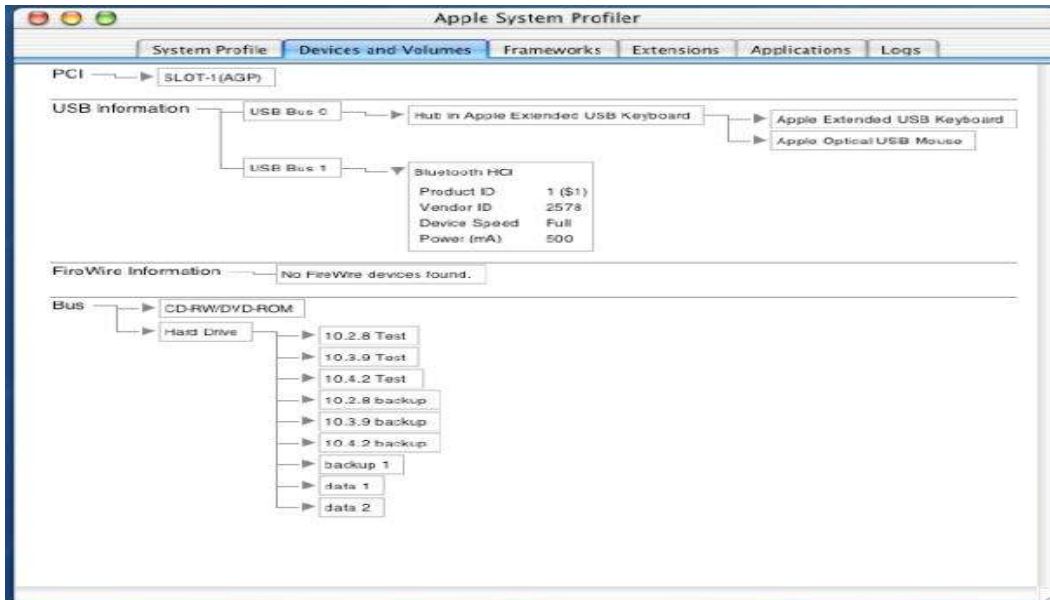


- Step9: Click “Yes” to restart Windows



### 3.2. Mac OS X users ( 10.2.8 or later )

- Step1: After you plug the Bluetooth USB Adapter, the system Profile will find the Bluetooth device



---

**Note:** For more information on using Bluetooth with Mac OS X, visit [www.apple.com](http://www.apple.com) and click on the Support tab. Select Bluetooth from the drop down menu , or enter it into a search filed. Help is also available on your computer (10.2.8 and later). Select Help (Mac Help) from the Finder Menu.

---

## 4. Declaration

### 4.1. Federal Communications Commission Radio Frequency Interference Statement

The BT2.0 dongle model no. 26-50701 has been tested and found to comply with the limits for a Class B digital device, pursuant to Part 15 of the FCC Rules. These limits are designed to provide reasonable protection against harmful interference in a residential installation. This equipment generates, uses and can radiate radio frequency energy and, if not installed and used in accordance with the instructions, may cause harmful interference to radio communications.

However, there is no guarantee that interference will not occur in a particular installation. If this equipment does not cause harmful interference to radio or television reception, which can be determined by turning the equipment off and on, the user is encouraged to try to correct the interference by one or more of the following measures:

- Reorient or relocate the receiving antenna.
- Increase the separation between the equipment and receiver.
- Connect the equipment into an outlet on a circuit different from that to which the receiver is connected.
- Consult the dealer or an experienced radio/TV technician for help.

**MODIFICATIONS:** Modifications not expressly approved by Primax may void the user's authority to operate the device under FCC regulations and must not be made.

**SHIELDED CABLES:** In order to meet FCC requirements, all connections to equipment using a Primax input device should be made using only the shielded cable provided.

### IMPORTANT NOTE:

#### FCC Radiation Exposure Statement:

This equipment complies with FCC radiation exposure limits set forth for an uncontrolled environment. End users must follow the specific operating instructions for satisfying RF exposure compliance.

This transmitter must not be co-located or operating in conjunction with any other antenna or transmitter.

### 4.2. Declaration of Conformity Compliance Statement for the Primax BT dongle

The BT2.0 dongle model no. 26-50701 complies with Part 15 of the FCC Rules. Operation is subject to conditions

- 1) This device may not cause harmful interference, and,
- 2) This device must accept any interference received, including interference that may cause undesired operation

As defined in Section 2.909 of the FCC Rules, the responsible party of this device is Primax Electronics LTD. 669, Ruey Kuang Road, Neihu 114, Taipei, Taiwan, R.O.C.  
886-2-2798-9008.