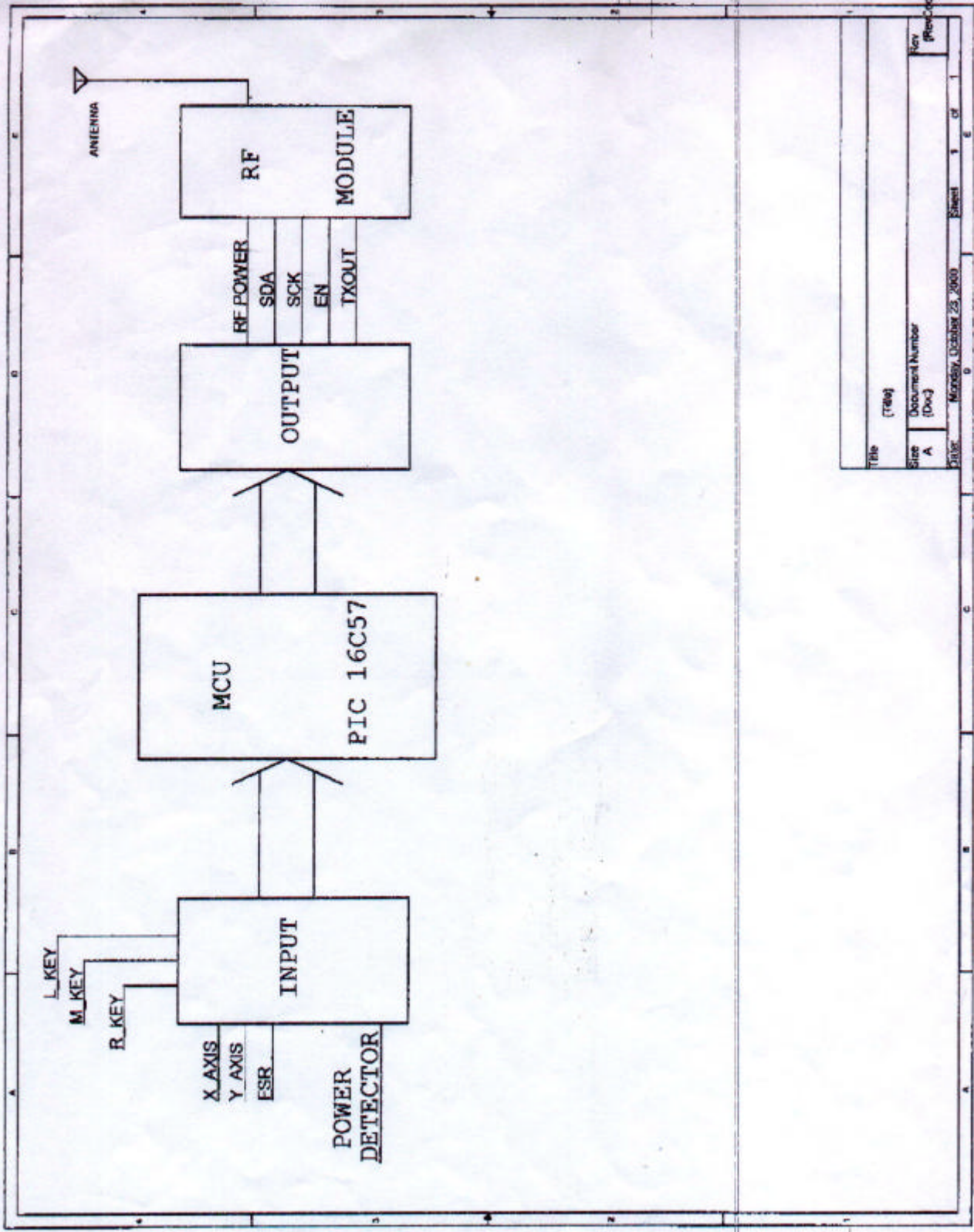


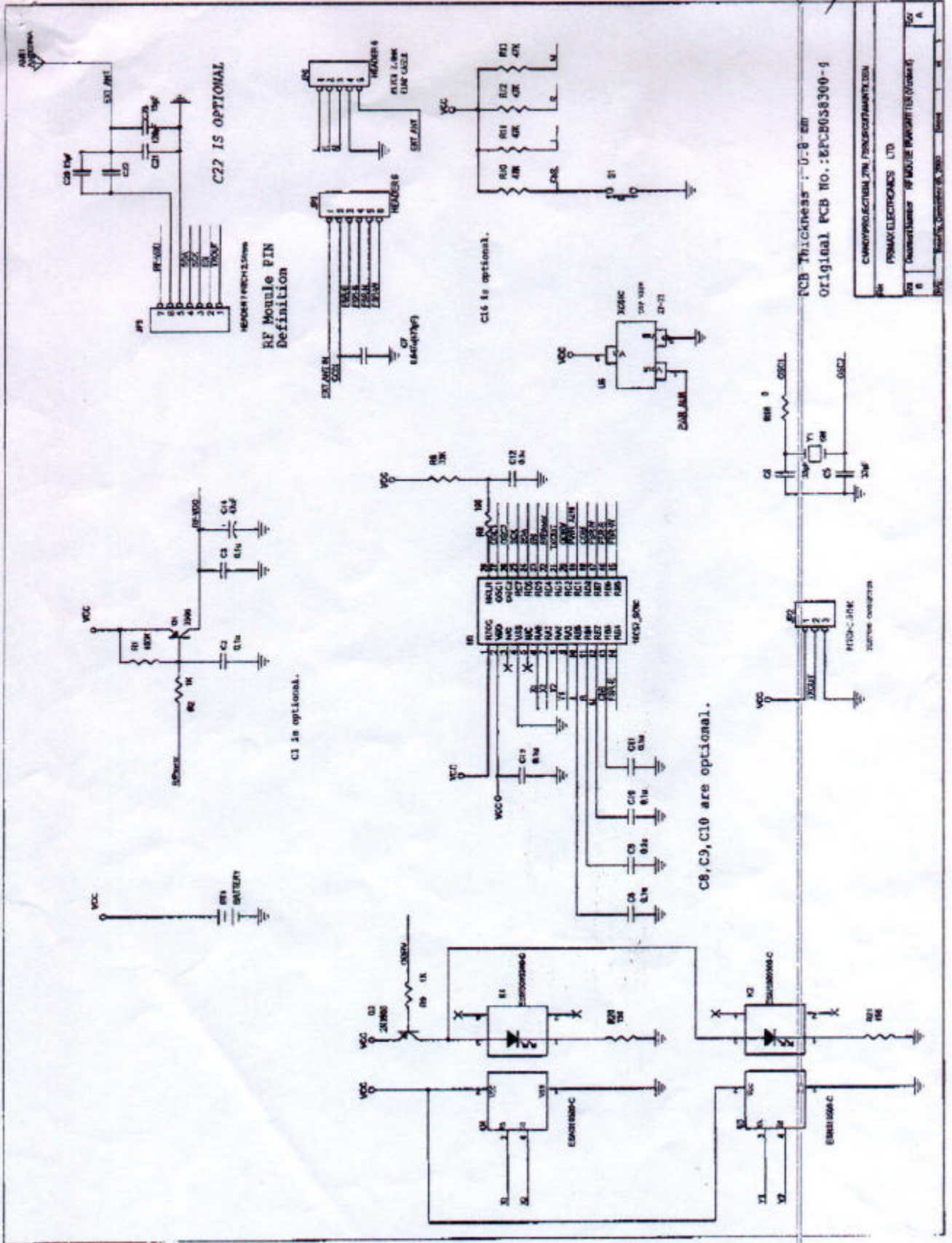
PCB NO : EPGB051100-1

HEADERS 3
Pitch 2.54mm
PLAT CABLE

File	PRIMAUX ELECTRONICS.LTD
Size	Document Number
A	(Doc)
Date	14/02/2000, 14/02/2000, 05/2000
Sheet	1 of 1
Rev	A



Title	(Title)
Size	Document Number
A	(Doc)
Rev	(Rev)
Sheet	1 of 1
Date	Monday, October 23, 2000



PCB Thickness : 0.6 mm
Original PCB No. : BFCB08300-9

REV	1	1	1
REV	2	1	1
REV	3	1	1
REV	4	1	1
REV	5	1	1
REV	6	1	1
REV	7	1	1
REV	8	1	1
REV	9	1	1
REV	10	1	1
REV	11	1	1
REV	12	1	1
REV	13	1	1
REV	14	1	1
REV	15	1	1
REV	16	1	1
REV	17	1	1
REV	18	1	1
REV	19	1	1
REV	20	1	1
REV	21	1	1
REV	22	1	1
REV	23	1	1
REV	24	1	1
REV	25	1	1
REV	26	1	1
REV	27	1	1
REV	28	1	1
REV	29	1	1
REV	30	1	1
REV	31	1	1
REV	32	1	1
REV	33	1	1
REV	34	1	1
REV	35	1	1
REV	36	1	1
REV	37	1	1
REV	38	1	1
REV	39	1	1
REV	40	1	1
REV	41	1	1
REV	42	1	1
REV	43	1	1
REV	44	1	1
REV	45	1	1
REV	46	1	1
REV	47	1	1
REV	48	1	1
REV	49	1	1
REV	50	1	1
REV	51	1	1
REV	52	1	1
REV	53	1	1
REV	54	1	1
REV	55	1	1
REV	56	1	1
REV	57	1	1
REV	58	1	1
REV	59	1	1
REV	60	1	1
REV	61	1	1
REV	62	1	1
REV	63	1	1
REV	64	1	1
REV	65	1	1
REV	66	1	1
REV	67	1	1
REV	68	1	1
REV	69	1	1
REV	70	1	1
REV	71	1	1
REV	72	1	1
REV	73	1	1
REV	74	1	1
REV	75	1	1
REV	76	1	1
REV	77	1	1
REV	78	1	1
REV	79	1	1
REV	80	1	1
REV	81	1	1
REV	82	1	1
REV	83	1	1
REV	84	1	1
REV	85	1	1
REV	86	1	1
REV	87	1	1
REV	88	1	1
REV	89	1	1
REV	90	1	1
REV	91	1	1
REV	92	1	1
REV	93	1	1
REV	94	1	1
REV	95	1	1
REV	96	1	1
REV	97	1	1
REV	98	1	1
REV	99	1	1
REV	100	1	1

COMP PRODUCTION 7M PRODUCTION 2000
PRIMAX ELECTRONICS LTD
100, 101, 102, 103, 104, 105, 106, 107, 108, 109, 110, 111, 112, 113, 114, 115, 116, 117, 118, 119, 120, 121, 122, 123, 124, 125, 126, 127, 128, 129, 130, 131, 132, 133, 134, 135, 136, 137, 138, 139, 140, 141, 142, 143, 144, 145, 146, 147, 148, 149, 150, 151, 152, 153, 154, 155, 156, 157, 158, 159, 160, 161, 162, 163, 164, 165, 166, 167, 168, 169, 170, 171, 172, 173, 174, 175, 176, 177, 178, 179, 180, 181, 182, 183, 184, 185, 186, 187, 188, 189, 190, 191, 192, 193, 194, 195, 196, 197, 198, 199, 200