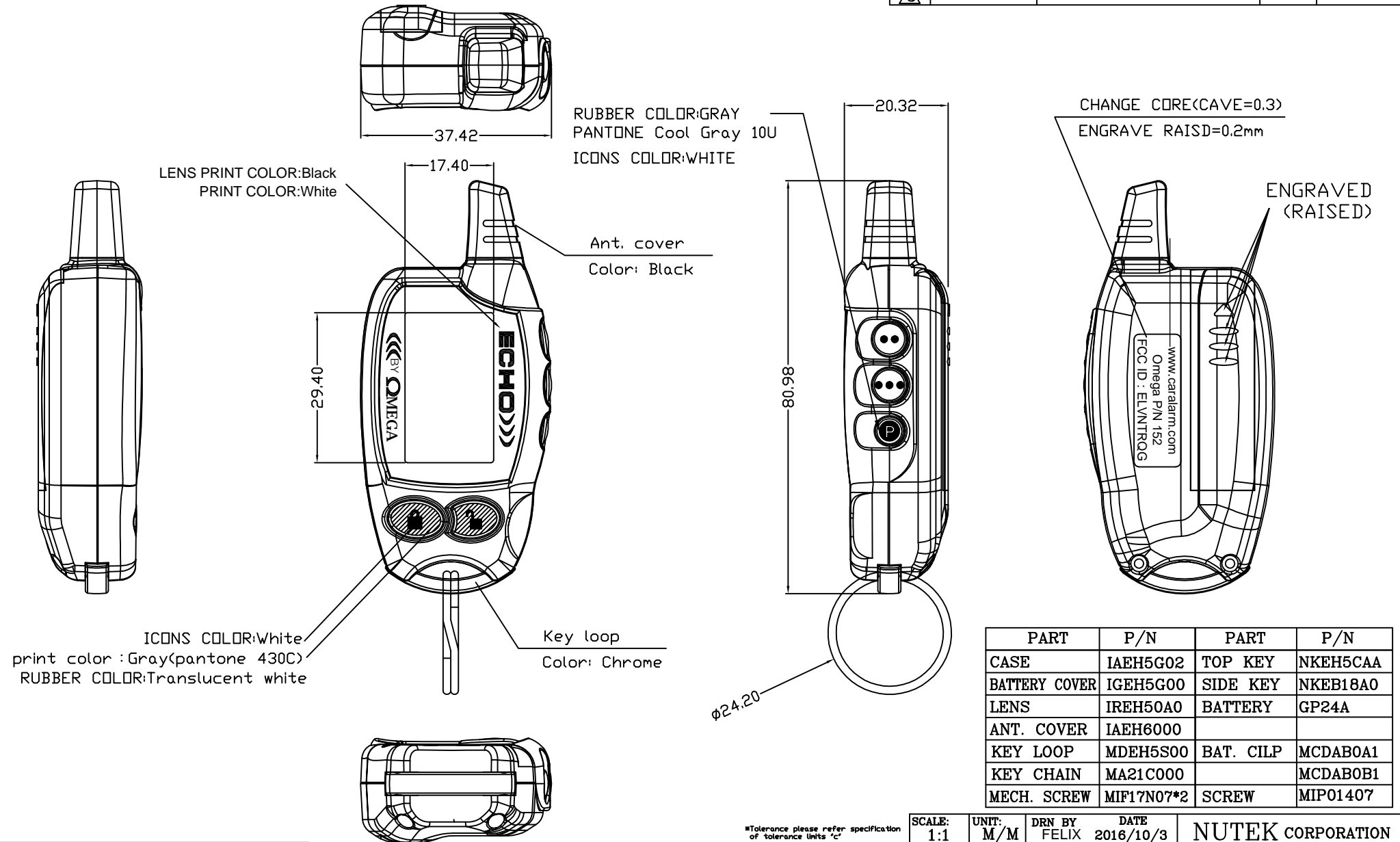


NOTE:
CASE FRONT, BACK & DOOR TO BE PAINT WITH:
DUPONT DESATURATED DARK NEUTRAL MATELLICS DM348 WITH CLEAR COAT

REVISIONS				
REV.	ACC.	DESCRIPTION	DRN.	DATE
1				
2				
3				



BODY MATERIAL : ABS+PC
1. Texture is same as MT-11010
2. Radius will be 0.2 if not specified.

*Tolerance please refer specification of tolerance units "C"
SURF TOLERANCE SPEC.

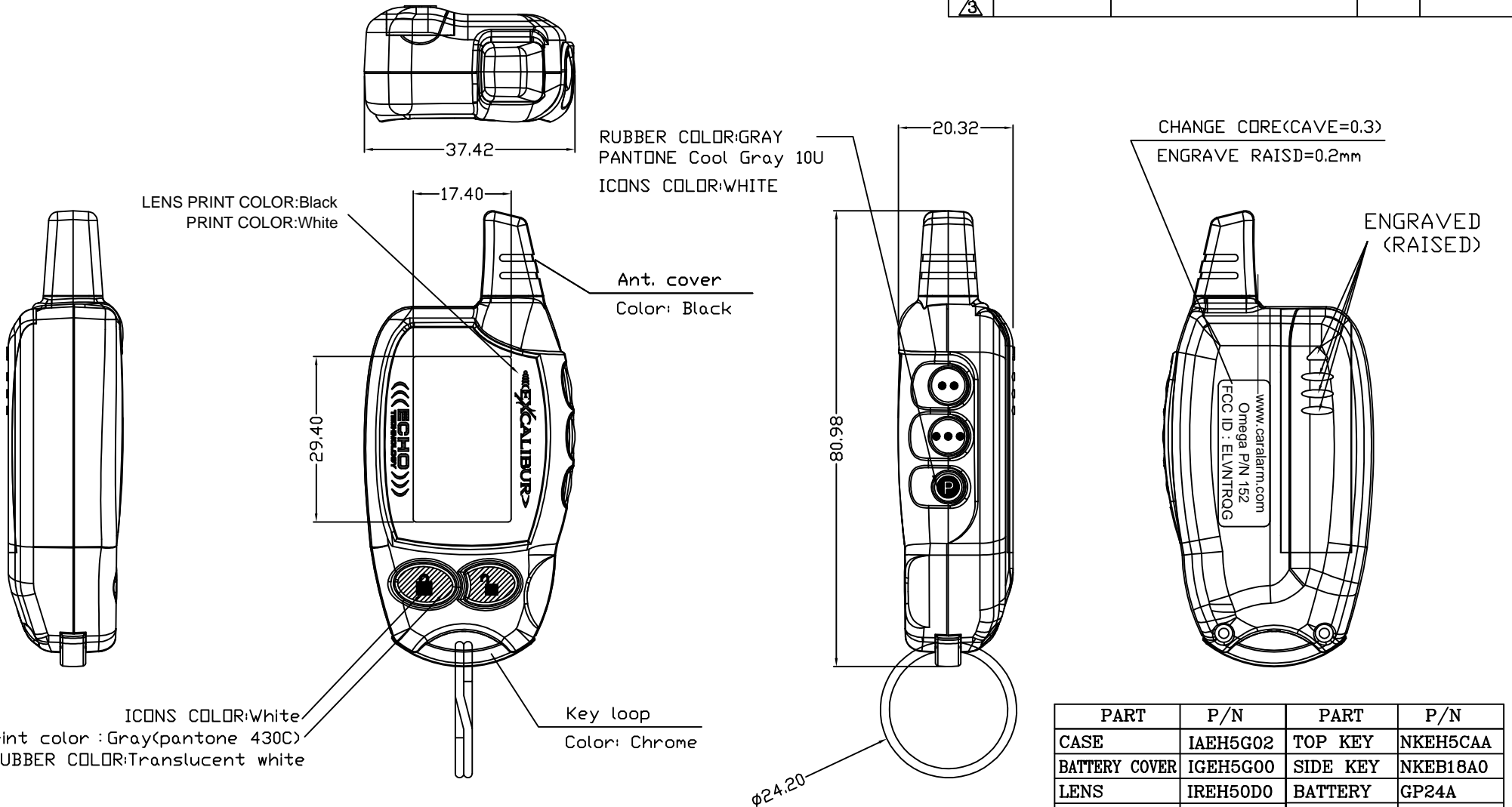
GROUP	A	B	C
UNDER 6	0.08	0.16	0.30
6-30	0.10	0.20	0.40
30-120	0.20	0.40	0.80
120-300	0.40	0.80	2.00

PART	P/N	PART	P/N
CASE	IAEH5G02	TOP KEY	NKEH5CAA
BATTERY COVER	IGEH5G00	SIDE KEY	NKEB18A0
LENS	IREH50A0	BATTERY	GP24A
ANT. COVER	IAEH6000		
KEY LOOP	MDEH5S00	BAT. CILP	MCDAB0A1
KEY CHAIN	MA21C000		MCDAB0B1
MECH. SCREW	MIF17N07*2	SCREW	MIP01407

SCALE: 1:1	UNIT: M/M	DRN BY: FELIX	DATE: 2016/10/3	NUTEK CORPORATION		
MATERIAL	CHK BY: YYS	TITLE: EXC 152-07 HHU		SIZE: A4	DEPT:	DRAWING NO: 9710430-4
FINISH	APPD BY: VICTOR	REV: 0		SHEET: OF		

NOTE:
CASE FRONT, BACK & DOOR TO BE PAINT WITH:
DUPONT DESATURATED DARK NEUTRAL MATELLICS DM348 WITH CLEAR COAT

REVISIONS				
REV.	ACC.	DESCRIPTION	DRN.	DATE
1				
2				
3				



PART	P/N	PART	P/N
CASE	IAEH5G02	TOP KEY	NKEH5CAA
BATTERY COVER	IGEH5G00	SIDE KEY	NKEB18A0
LENS	IREH50D0	BATTERY	GP24A
ANT. COVER	IAEH6000		
KEY LOOP	MDEH5S00	BAT. CILP	MCDAB0A1
KEY CHAIN	MA21C000		MCDAB0B1
MECH. SCREW	MIF17N07*2	SCREW	MIP01407

BODY MATERIAL : ABS+PC
1. Texture is same as MT-11010
2. Radius will be 0.2 if not specified.

*Tolerance please refer specification of tolerance units "C"
MILY TOLERANCE SPEC.

GROUP	A	B	C
UNDER 6	0.08	0.16	0.30
6-30	0.10	0.20	0.40
30-120	0.20	0.40	0.80
120-300	0.40	0.80	2.00

SCALE: 1:1	UNIT: M/M	DRN BY: FELIX	DATE: 2016/10/3	NUTEK CORPORATION		
MATERIAL	CHK BY: YYS	TITLE: EXC 152-03G HHU		SIZE: A4	DEPT:	DRAWING NO: 9710430-5
FINISH	APPD BY: VICTOR	REV: 0		SHEET OF		