

---

## TABLE OF CONTENTS

FUEL RECOMMENDATION	1
BEFORE DRIVING	2
OPERATING YOUR VEHICLE	3
DRIVING TIPS	4
OTHER CONTROLS AND EQUIPMENT	5
INSPECTION AND MAINTENANCE	6
EMERGENCY SERVICE	7
APPEARANCE CARE	8
GENERAL INFORMATION	9
SPECIFICATIONS	10



## FOREWORD

This manual is an essential part of your vehicle and should be kept with the vehicle at all times. Please read this manual carefully and review it from time to time. It contains important information on maintenance. It is especially important that this manual remain with the vehicle at the time of resale. The next owner will need this information also.

You are invited to avail the three free inspection services as described in this manual. Three free inspection coupons are attached to this manual. Please show this manual to your dealer when you take your vehicle for any Service.

To prolong the life of your vehicle and reduce maintenance costs, the periodic maintenance must be carried out according to the "PERIODIC MAINTENANCE SCHEDULE" described in "INSPECTION AND MAINTENANCE" section of this manual. Periodic maintenance is essential for preventing trouble and accidents to ensure your satisfaction and safety.

Daily Inspection and Care as per "DAILY INSPECTION CHECKLIST" described in the "INSPECTION AND MAINTENANCE" section of this Manual is essential for prolonging the operating life of the vehicle and for safe driving.

MARUTI SUZUKI INDIA LIMITED believes in conservation and protection of Earth's natural resources.

To that end, we encourage every vehicle owner to recycle, trade in, or properly dispose of, as appropriate, used motor oil, coolant, and other fluids; batteries; and tyres.

### MARUTI SUZUKI INDIA LIMITED

**All information in this manual is based on the latest product information available at the time of publication. Due to improvements or other changes, there may be discrepancies between information in this manual and your vehicle. MARUTI SUZUKI reserves the right to make changes at any time, without notice. This vehicle may not comply with standards or regulations of other countries. Before attempting to register this vehicle in any other country, check all applicable regulations and make any necessary modifications.**

## IMPORTANT

### ▲ WARNING/CAUTION/NOTE

Please read this manual and follow its instructions carefully. To emphasise special information, the words WARNING, CAUTION, and NOTE have special meanings. Information following these signal words should be carefully reviewed.

#### ▲ WARNING

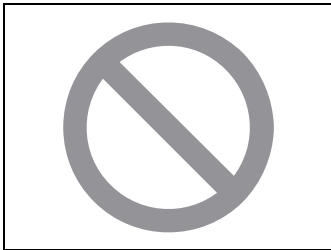
**The personal safety of the driver, passengers, or bystanders may be involved. Disregarding this information could result in their injury or death.**

#### CAUTION

**These instructions point out special service procedures or precautions that must be followed to avoid damaging the vehicle.**

#### NOTE:

*This provides special information to make maintenance easier or important instructions clearer.*



75F135

The circle with a slash in this manual means "Don't do this" or "Don't let this happen".

## MODIFICATION WARNING

### ▲ WARNING

Do not modify your vehicle. Modification could adversely affect safety, handling, performance, or durability and may violate governmental regulations. In addition, damage or performance problems resulting from modification may not be covered under warranty.

### ▲ WARNING

Your vehicle has monocoque body construction which provides for certain crumple zones in the body which absorbs larger part of impact energy in the event of a front collision and protects the occupants from impact. Do not use any fitments such as crash guards. These fitments will increase the risk to the occupants because of the shock directly getting transmitted to the occupants.

### CAUTION

Improper installation of mobile communication equipment such as cellular telephones or CB (Citizen's Band) radios may cause electronic interference with your vehicle's ignition system, resulting in vehicle performance problems. Consult your MARUTI SUZUKI Authorized workshop or qualified service technician for advice on installing such mobile communication equipment.

Copying, quoting or reproduction of any part of this manual is not permitted without explicit approval by MARUTI SUZUKI INDIA LIMITED.

---

**MAINTENANCE SERVICE RECORD**

MODEL	CHASSIS NO.	ENGINE NO.	KEY NO.	DATE OF DELIVERY	MILEAGE (KM)	BATTERY	
						MAKE	SR.NO. BATCH CODE

OWNER'S NAME & ADDRESS _____ _____ _____ TEL.NO. _____
--------------------------------------------------------------

ADDRESS/STAMP OF SELLING DEALER	SELLING DEALER CODE
SHOWROOM	
WORKSHOP	<b>IMPORTANT INFORMATION TO CUSTOMER</b> Dear Customer, For any assistance with regard to our product, please contact General Manager/Works Manager at any of our Dealer or Authorised Service Station. For additional enquiry you may contact our Regional Office or Service Department. The Addresses and Phone nos. are given in Service Network Booklet provided along with vehicle.

DATE OF SERVICE	KIND OF SERVICE	MILEAGE (KM)	DESCRIPTION OF JOB	NAME OF SERVICING DEALER/MASS	JOB CARD NO.	MECHANICS SIGNATURE

F:... FREE SERVICE, P:.... PAID SERVICE, W:.... WARRANTY JOB, A:.... ACCIDENTAL JOB

---

## WARRANTY POLICY

Maruti Suzuki India Limited (hereinafter called "Maruti Suzuki"), warrants that each new Maruti Suzuki vehicle distributed in India by Maruti Suzuki and sold by an authorised Maruti Suzuki dealer will be free, under normal use and service, from any defects in material and workmanship at the time of manufacture SUBJECT TO THE FOLLOWING TERMS AND CONDITIONS:

### (1) Qualification:

To qualify for this warranty:

- (a) The Maruti Suzuki vehicle must be delivered by Maruti Suzuki authorised dealer and set-up, serviced by Maruti Suzuki authorised dealer/ service station.
- (b) The warranty registration card in respect of each vehicle must be completed by the dealer at the time of delivery of the vehicle and dealer should retain the same.

### (2) Term:

**The term of the warranty shall be twenty four (24) months or 40,000 kilometers (whichever occurs first) from the date of delivery to the first owner.**

### (3) Maruti Suzuki's Warranty Obligation:

If any defect(s) should be found in a Maruti Suzuki vehicle within the term stipulated above, Maruti Suzuki's only obligation is to repair or replace at its sole discretion any part shown to be defective, with a new part or the equivalent at no cost to the owner for parts or labour, when Maruti Suzuki acknowledges that such a defect is attributable to faulty material or workmanship at the time of manufacture. The owner is responsible for any repair or replacements which are not covered by this warranty.

### (4) Limitation:

This warranty shall not apply to:

- (a) normal maintenance service required other than the three free services, including without limitation, oil and fluid changes, headlight aiming, fastener retightening, wheel balancing, wheel alignment and tyre rotation, cleaning of injectors, adjustments of carburettor, ignition timing, clutch and valve clearance.
- (b) the replacement of normal wear parts including without limitation, bulbs, battery, tyres and tubes, spark plugs, belts, hoses, filters, wiper blades, brushes, contact points, fuses, clutch disc, brake shoes, brake pads, cable and all rubber parts (except oil seal and glass run).
- (c) any vehicle which has been used for competition or racing.
- (d) any repairs or replacement required as a result of accidents or collision.
- (e) any defects caused by misuse, negligence, abnormal use or insufficient care.
- (f) any vehicle which has been modified or altered, including without limitation, the installation of performance accessories.
- (g) any vehicle on which parts or accessories not approved by Maruti Suzuki have been used.
- (h) any vehicle which has not been operated in accordance with the operating instructions in the Maruti Suzuki Owner's Manual.
- (i) any vehicle which has not received, during the warranty term, the service inspections prescribed in the Maruti Suzuki Owner's Manual.

- (j) any vehicle which has been assembled, disassembled, adjusted or repaired by other than an Maruti Suzuki authorised dealer/service station.
- (k) any vehicle which has been used for purposes other than what it was designed for.
- (l) any damage or deterioration caused by industrial pollution and bird droppings.
- (m) insignificant defects which do not affect the function of the vehicle including without limitation, sound, vibration and fluid seep.
- (n) any natural wear and tear including without limitation, aging etc.
- (o) Installation and usage of Domestic LPG Gas/LPG cylinder.

**For Maruti Suzuki Air-Conditioned Vehicles**

- (p) V-belts, hoses and gas leaks.

**(5) Extent of Warranty:**

This warranty is the entire written warranty given by Maruti Suzuki for Maruti Suzuki vehicles and no dealer or its or his agent or employee is authorised to extend or enlarge this warranty and no dealer or its or his agent or employee is authorised to make any oral warranty on Maruti Suzuki's behalf.

Maruti Suzuki reserves the right to add any improvements or change the design of any model at any time with no obligation to make the same changes on units previously sold.

**(6) Warranty Service:**

To obtain warranty service, the complete vehicle must be presented at the owner's expenses to any authorised Maruti Suzuki dealer.

**(7) Owner's Warranty Responsibilities:**

It is responsibility of each owner to:

- (a) make certain that the warranty registration/PDI card was completed at the time of delivery of the vehicle;
- (b) have performed, at his own expenses, by an Maruti Suzuki authorised dealer/service station all the service inspections specified in the Maruti Suzuki "Owner's Manual and Service Booklet" and maintain adequate proof that such service inspections have been performed.
- (c) make certain that the Maruti Suzuki authorised dealer/service station performing the service inspection has certified the work on the "Maintenance Service Record" page in the "Owner's Manual and Service Booklet" and
- (d) present the Maruti Suzuki "Owner's Manual and Service Booklet" to the authorised Maruti Suzuki dealer whenever requesting service inspections or warranty service.

If the "Owner's Manual and Service Booklet" should be lost or destroyed the owner should consult the authorised Maruti Suzuki dealer from whom the vehicle was purchased for instructions concerning replacement of the "Owner's Manual and Service Booklet".

**(8) Disclaimer of Consequential Damage:**

Maruti Suzuki assumes no responsibility for loss of vehicle, loss of time, inconvenience or any other indirect incidental or consequential damage resulting from the vehicle not being available to the owner because of any defect covered by this warranty.

**(9) Change of Owner**

Even if ownership of the vehicle changes, the remaining warranty period is effective for the new owner.



---

## EMISSION WARRANTY POLICY

Maruti Suzuki offers the Emission Warranty on all Maruti Suzuki vehicles (apart from the Regular warranty and will run parallel to the regular product warranty) only in four metropolitan cities (**New Delhi, Kolkata, Mumbai and Chennai**) with effect from **July 1st, 2001**.

### Terms:

The Emission Warranty will be applicable for **80,000 kms or 3 years** (Which ever comes earlier) from the date of delivery to the first owner. The remaining warranty terms will be valid in case of any change in ownership provided the production of all valid document.

### Conditions:

1. Under Emission Warranty, Warranty claims will be admitted for a prima facie examination, in case vehicle fails to meet to the Emission Standard as specified in *sub rule (2) of rule no. 115 of Central Motor Vehicles Rules (CMVR), 1989*.
2. The warranty claims will only be accepted after examination carried out by Maruti Suzuki or it's dealer which leads to firm conclusions that the
  - a) Original settings have not been tempered in any case.
  - b) Part (as given in Annexure-A) has a manufacturing defect.
  - c) Vehicle is unable to meet the Emission Standards (as given in 1.), inspite of the vehicle having been maintained and used in accordance with the instructions as specified in Owner's

Manual and Service Booklet and the used fuel and different oils (Engine oil, Transmission oil, Brake oil etc.) are also as per specification.

3. The method of examination for deciding the warranty of the parts will be at the sole discretion of Maruti Suzuki and it's dealer and results of the examination will be final and binding. If after examination, the warrantable condition is not established, Maruti Suzuki and it's dealer has the right to charge all, or part of the cost of such examination.
4. Under Emission Warranty, the parts (as given in Annexure-A) will be changed free of cost, but the consumables will be charged as per actual.
5. If the part covered under Emission Warranty or the associated parts, are not independently replaceable, on account of these being integral parts a complete assembly, Maruti Suzuki and it's dealer will have the sole discretion to replace entire assembly or by using some of the parts of the system through suitable repair or modifications.
6. Any consequential repairs or replacement of parts which may be found necessary to establish compliance of Emission Warranty, will not be considered under warranty, unless the same is under product warranty. The consumable will be charged as per actual under such repair or replacement.
7. Maruti Suzuki will not be responsible for the cost of transportation of the vehicle to the nearest Maruti Suzuki dealer workshop or any loss due to non-availability of the vehicle during the period of lodging of a warranty claim and examination and/or repair by Maruti Suzuki dealer.

- 
8. Maruti Suzuki will not be responsible for any penalty that may be charged by statutory authorities on account of failure to comply with the EMISSION STANDARDS.
  9. Emission Warranty will not be affected on the change of owner, provided all the documents are available.
  10. All maintenance actions (as specified in the Owner's Manual and Service Booklet) need to be followed and recorded in the manual for emission warranty.
  11. The customer needs to produce the PUC (Pollution Under Control) certificate valid for the period preceeding the test during which the failure is discovered. The receipts (for the maintenance of the vehicle as per specification in Owner's Manual and Service Booklet from the date of original purchase of the vehicle) will also be required.

**Conditions under which the Emission Warranty is not APPLICABLE**

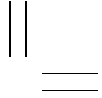
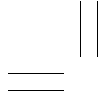
1. In the absence of valid PUC certificate.
2. Vehicle not serviced from Maruti Suzuki authorised workshop as per the schedule specified in the Owner's Manual.
3. Vehicle subjected to abnormal use (accident, motor race, rallies or for the purpose of establishing the records etc.)
4. Use of non MGP (Maruti Genuine Part).
5. Vehicle tempered in an unauthorised manner.
6. Tampering with odometer so that the actual kilometer reading can not be read.
7. Use of adulterated fuel and/or unspecified oils (Engine oil, Transmission oil and Brake oil etc.) .

---

## Annexure - A

### List of parts covered under Emission Warranty

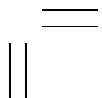
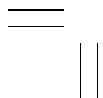
1. Fuel Injection Assembly, Pressure Regulator, Throttle Body Assembly.
2. Electronic Control Module (ECM).
3. Intake Manifold.
4. EGR valve.
5. Distributor and internal parts.
6. Ignition Coil.
7. Canister Assembly.
8. Vapour Liquid Separator.
9. Fuel Tank and Filler Cap.
10. PCV (Positive Crankcase Ventilation) Valve.
11. Oil Filler Cap.
12. Catalytic Converter.
13. Exhaust Manifold.
14. All Fuel Injection System related SENSORS.



---

**MEMO**

-----  
-----  
-----  
-----  
-----  
-----  
-----  
-----  
-----  
-----  
-----  
-----  
-----  
-----



FUEL RECOMMENDATION

**FUEL RECOMMENDATION**

Fuel Recommendation ..... 1-1

1

## FUEL RECOMMENDATION

### Fuel Recommendation

You must use unleaded gasoline with an octane number (RON) of 91 or higher.

*should switch back to unleaded gasoline containing no alcohol.*

#### Gasoline/Ethanol blends

Blends of unleaded gasoline and ethanol (grain alcohol), also known as gasohol, are commercially available in some areas. Blends of this type may be used in your vehicle if they are no more than 10% ethanol. Make sure this gasoline-ethanol blend has octane ratings no lower than those recommended for gasoline.

#### Gasoline/Methanol blends

Blends of unleaded gasoline and methanol (wood alcohol) are also commercially available in some areas. DO NOT USE fuels containing more than 5% methanol under any circumstances. Fuel system damage or vehicle performance problems resulting from the use of such fuels are not the responsibility of MARUTI SUZUKI and may not be covered under the New Vehicle Warranty.

Fuels containing 5% or less methanol may be suitable for use in your vehicle if they contain cosolvents and corrosion inhibitors.

#### NOTE:

*If you are not satisfied with the driveability or fuel economy of your vehicle when you are using a gasoline/alcohol blend, you*

#### CAUTION

The fuel tank has an air space to allow for fuel expansion in hot weather. If you continue to add fuel after the filler nozzle has automatically shut off or an initial blowback occurs, the air chamber will become full. Exposure to heat when fully fuelled in this manner will result in leakage due to fuel expansion. To prevent such fuel leakage, stop filling after the filler nozzle has automatically shut off, or when using an alternative non-automatic system, initial vent blowback occurs.

#### CAUTION

Be careful not to spill fuel containing alcohol while refueling. If fuel is spilled on the vehicle body, wipe it up immediately. Fuels containing alcohol can cause paint damage, which is not covered under the New Vehicle Limited Warranty.

**BEFORE DRIVING**

Keys ..... 2-1

Door Locks ..... 2-2

Keyless Entry System Transmitter (if equipped) ..... 2-4

Security System (if equipped) ..... 2-14

Windows ..... 2-14

Mirrors ..... 2-16

Front Seats ..... 2-17

Rear Seats ..... 2-19

Seat Belts and Child Restraint Systems ..... 2-21

Supplemental Restraint System (air bags)  
(if equipped) ..... 2-30

Instrument Cluster ..... 2-35

Warning and Indicator Lights ..... 2-36

Speedometer ..... 2-41

Tachometer (if equipped) ..... 2-41

Fuel Gauge ..... 2-41

Information Display (if equipped) ..... 2-41

Lighting Control Lever ..... 2-44

Rear Fog Light Switch (if equipped) ..... 2-45

Front Fog Light Switch (if equipped) ..... 2-45

Headlight Leveling Switch ..... 2-46

Turn Signal Control Lever ..... 2-46

Hazard Warning Switch ..... 2-47

Windshield Wiper and Washer Lever ..... 2-48

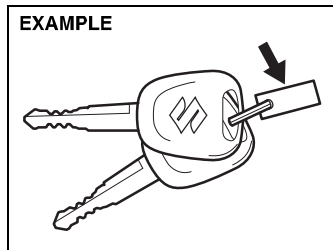
Tilt Steering Lock Lever (if equipped) ..... 2-50

Horn ..... 2-50

Heated Rear Window Switch (if equipped) ..... 2-51

## BEFORE DRIVING

### Keys



Your vehicle comes with a pair of identical keys. Keep the spare key in a safe place. One key can open all of the locks on the vehicle.

The key identification number is stamped on a metal tag provided with the keys or on the keys. Keep the tag in a safe place. If you lose your keys, you will need this number to have new keys made. Write the number below for your future reference.

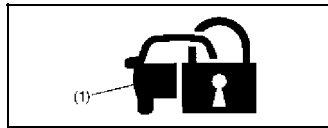
KEY NUMBER:

2-1

### Immobilizer System (if equipped)

This system is designed to help prevent vehicle theft by electronically disabling the engine starting system.

The engine can be started only with your vehicle's original immobilizer ignition key which has an electronic identification code programmed into it. The key communicates the identification code to the vehicle when the key is turned to the "ON" position. If you need to make spare keys, contact your MARUTI SUZUKI Authorized workshop. The vehicle must be programmed with the correct identification code for the spare keys. A key made by an ordinary locksmith will not work.



If the immobilizer system light (1) blinks when the ignition switch is in the "ON" position, there may be something wrong with your key or with the immobilizer system. Ask your MARUTI SUZUKI Authorized workshop to inspect the system.

### NOTE:

- If you lose your immobilizer ignition key, contact your MARUTI SUZUKI Authorized workshop as soon as possible to have the lost one deactivated, then have the new key made by them.
- If you own other vehicles with immobilizer keys, keep those keys away from the ignition switch when using your MARUTI SUZUKI, or the engine may not be started because they may interfere with your MARUTI SUZUKI's immobilizer system.
- If you attach any metal objects to the immobilizer key, it may not start the engine.

### CAUTION

The immobilizer key is a sensitive electronic instrument. To avoid damaging the immobilizer key:

- Do not expose it to impacts, moisture or high temperature such as on the dashboard under direct sunlight.
- Keep the immobilizer key away from magnetic objects.

### Ignition Key Reminder (if equipped)

A buzzer sounds intermittently to remind you to remove the ignition key if it is in the ignition switch when the driver's door is opened.

16

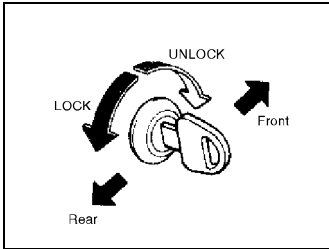
67LH0-74E



**Door Locks**

**Side Door Locks**

**Driver's door**



60B008

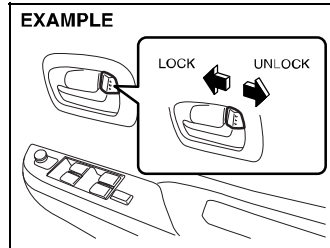
To lock a driver's door from outside the vehicle:

- Insert the key and turn the top of the key toward the rear of the vehicle, or
- Turn the lock knob forward, then pull and hold the door handle as you close the door.

To unlock a driver's door from outside the vehicle, insert the key and turn the top of the key toward the front of the vehicle.

To lock a front passenger's door from outside the vehicle, turn the lock knob forward, then pull and hold the door handle as you close the door.

To lock a rear door from outside the vehicle, turn the lock knob forward and close the door.

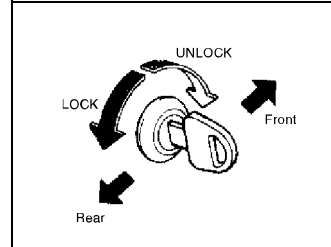


67LH008

To lock a door from inside the vehicle, turn the lock knob forward. Turn the lock knob backward to unlock the door.

**Central Door Locking System (if equipped)**

**Driver's door**



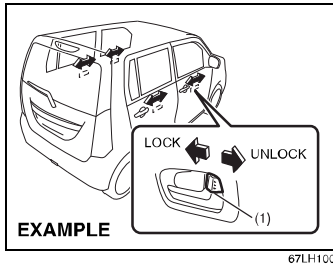
60B008

You can lock and unlock all doors simultaneously by using the key in the driver's door lock.

To lock all doors simultaneously, insert the key in the driver's door lock and turn the top of the key toward the rear of the vehicle.

To unlock all doors simultaneously, insert the key in a driver's door lock and turn the top of the key toward the front of the vehicle.

## BEFORE DRIVING

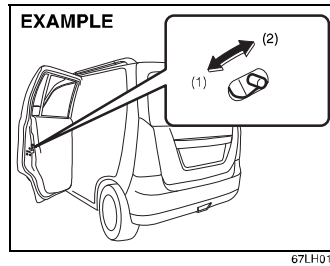


You can also lock or unlock all doors by turning the lock knob (1) forward or backward, respectively.

**NOTE:**  
If your vehicle is equipped with keyless entry system, you can also lock or unlock all doors by operating the transmitter. Refer to "Keyless Entry System Transmitter".

**NOTE:**  
If your vehicle is equipped with security system, all doors are automatically unlocked when you turn the ignition switch to the "LOCK" position and pull out the key.

### Child-Proof Locks (rear door)



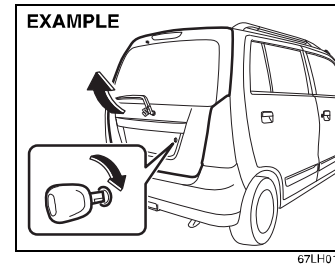
(1) LOCK  
(2) UNLOCK

Each of the rear doors is equipped with a child-proof lock which can be used to help prevent unwanted opening of the door from inside the vehicle. When the lock lever is in the "LOCK" position (1), the rear door can only be opened from outside. When the lock lever is in the "UNLOCK" position (2), the rear door can be opened from inside or outside.

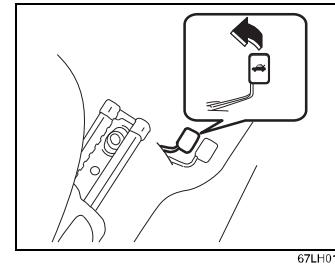
#### ⚠ WARNING

Be sure to place the child-proof lock in the "LOCK" position whenever children are seated in the rear.

### Tailgate



To open the tailgate, insert the key and turn it clockwise to unlatch and lift the tailgate.



## BEFORE DRIVING

You can also unlatch the tailgate by pulling the release lever located on the outboard side of the driver's seat.

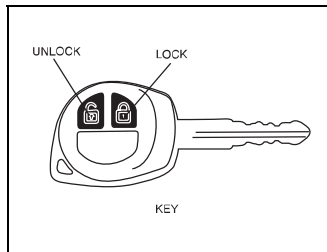
### ▲ WARNING

Always make sure that the tailgate is closed and latched securely. Completely closing the tailgate helps prevent occupants from being thrown from the vehicle in the event of an accident. Completely closing it also helps keep exhaust gases from entering the car.

### CAUTION

Do not use the key to lift up the lid, or the key may break off in the lock.

## Keyless Entry Cum Alarm System (if equipped)



61A184

The Keyless Entry cum Alarm System has two basic functions.

1. Keyless Entry
2. Alarm System

### Keyless Entry

You can lock / unlock all doors simultaneously by operating the transmitter near the vehicle.

- To lock all doors, press "LOCK" button once. All indicator lights will flash once when doors are locked.
- To unlock all doors, press the "UNLOCK" button once. All indicator lights will flash twice when doors are unlocked.

### NOTE:

- The operating distance of the keyless entry system transmitter is about 20 meters, but this may vary depending on the condition of transmitter's battery and surroundings, especially near other transmitting devices such as radio towers.
- The door locks cannot be operated with the transmitter if the ignition key is inserted in the key cylinder or if any door is open.
- When any door is open, the vehicle can not be locked through transmitters. Be sure to close the doors and windows before locking.
- If you lose any of the transmitters/keys, contact your MARUTI SUZUKI Authorized workshop as soon as possible for erasing the transmitter ID from vehicle controller memory. In case you need a new transmitter, place an order with your dealer.

## BEFORE DRIVING

### CAUTION

The transmitter is a sensitive electronic instrument. To avoid damaging the transmitter:

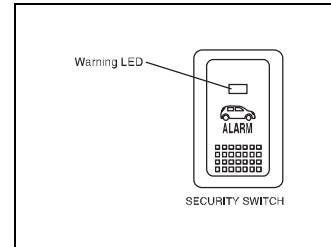
- Do not expose it to impacts, moisture, dust or high temperature such as by leaving it on the dashboard under direct sunlight.
- Do not tamper with internal parts.
- Keep the transmitter away from magnetic objects such as a television.

### Alarm System

The Alarm System has two basic modes of operation.

#### VALET MODE

In Valet mode all the Security Alarm features of the system like arm/disarm, trigger are deactivated. In this mode, system will work as a Keyless Entry only. When the vehicle is given for servicing or valet parking, turn the system into Valet mode.

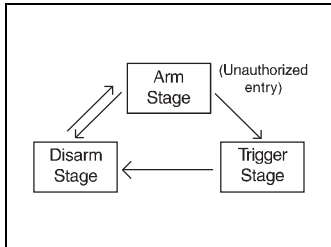


#### ALARM MODE

The Alarm mode is designed to protect your vehicle from unauthorised entry. It operates in three stages:

- First : Arm Stage
- Second : Trigger Stage
- Third : Disarm Stage.

**BEFORE DRIVING**



**Arm Stage**

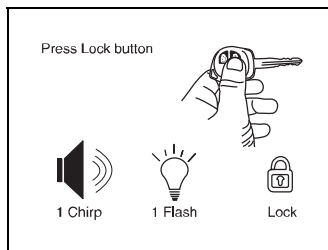
In Arm Stage, your vehicle is monitored for any unauthorized entry. In order to arm: press the key LOCK button once:

As response to locking/arming:

- 1) Doors will get locked and vehicle will get armed. This is indicated by one siren chirp & one light flash of all indicator lights.
- 2) Visible theft warning LED on security switch will flash slowly.

**NOTE:**

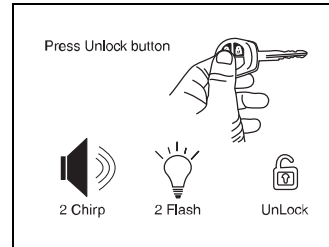
1. Three siren chirps and one light flash of all indicator lights will indicate that hood is open. However locking and arming of all doors takes place.



2. Be sure to close the doors and windows before locking/arming the vehicle.
3. System will not Lock/Arm in following conditions:
  - (a) If any of doors is open (expect Hood).
  - (b) If Key is in key cylinder.

**Trigger Stage**

In the event of any unauthorized entry (without unlocking/disarming) in the vehicle, the alarm triggers and all indicator lights flash. The triggering of the alarm is in two stages, First acting as a warning to the intruder and then full blast drawing the surrounding attention. In order to bring the system to disarm stage, press UNLOCK button on the key or enter the Emergency Pin. (Described in Emergency disarm section)



**Disarm Stage**

System should be brought in Disarm Mode while you are entering the vehicle. In order to disarm: Press the key UNLOCK button once.

As response to unlocking/disarming:

- 1) Doors will unlock and vehicle will disarm. This is indicated by two siren chirps and two light flashes of all indicator lights.
- 2) Visible theft warning LED on security switch will flash faster than in arm stage indicating Auto rearm (described in auto rearm section)

## BEFORE DRIVING

### GENERAL FEATURE

#### Illuminated Entry

When vehicle is unlocked, the room lamp will turn ON to facilitate illuminated entry into the vehicle. If no door is opened in about 15 seconds of above operation, room lamp will fade out.

If any door is opened after 15 seconds, the room lamp turns ON again and after 15 seconds of closing all doors room lamp will fade out.

If within 15 seconds after closing all the doors the driver inserts the key into the key cylinder, then the room lamp will fade out.

#### Illuminated Exit

When key is removed from the key cylinder, the room lamp will turn ON to facilitate illuminated exit. If no door is opened in about 15 seconds of key removal from key cylinder, the room lamp will fade out.

When door is opened to exit the vehicle, the room lamp will turn ON again (if it has turned OFF after 15 seconds of key removal from key cylinder) and will turn OFF after 15 seconds of closing all the doors.

If within 15 seconds of all doors closure, vehicle is locked by pressing the LOCK button, the room lamp will fade out.

*NOTE: Room lamp will fade out gradually approximately in 2 seconds.*

#### Mute Lock/Unlock

To Arm/Disarm the vehicle without siren chirps use this function.

- Press and release the Key LOCK & UNLOCK buttons simultaneously.
- Press and release Key LOCK or UNLOCK button for desired function.

*Example: To Lock / arm the system without the Siren chirp sound, press and release the Key LOCK & UNLOCK button simultaneously, then press the Key LOCK button once.*

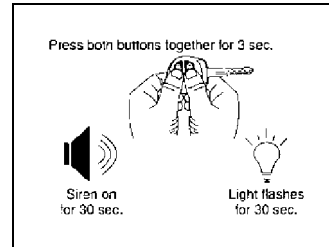
#### Auto Rearm

In case of accidental Unlock/Disarm of vehicle through transmitter, vehicles will automatically Lock & Arm without any indication, if no door is opened till about 30 seconds.

*NOTE: If the vehicle is in Valet Mode, system will only Lock the vehicle.*

#### Radio Frequency Lock Out

Transmitter function Lock/Unlock/Panic will not work when Key is inside key cylinder.



#### Panic Alarm (Car Locator)

Panic Alarm feature can be used to bring the surrounding attention to the vehicle or to locate the vehicle in congested parking area.

- Press and hold the Key LOCK & UNLOCK button simultaneously for 3 seconds or more.
- Panic alarm will be activated and siren will sound and indicator lights will flash for 30 seconds.
- Press and release the Key LOCK & UNLOCK button simultaneously to cancel the Panic alarm.

## BEFORE DRIVING

### Flashing LED Status

The flashing LED always reflects the status of the system as following.

SYSTEM CONDITION	LED STATUS
Disarmed condition	LED does not glow
Armed condition	Slow Flashes of LED
Auto Arming Condition	Fast Flashes

### Intrusion Alert

The system gives a report if it has been intruded in your absence. Four chirps are given when UNLOCK button is pressed after an intrusion.

Diagnostic report	Visual-LED	Sound
Built in shock sensor Triggered	2 Flashes	Four Chirps
Door/Trunk/Hood Intrusion	3 Flashes	Four Chirps
Ignition	5 Flashes	Four Chirps

### PROGRAMMABLE FEATURES

Systems have some features which can be programmed by user according to their choice.

#### Drive Lock Mode

Drive lock mode can be programmed by SPEED LOCK or can be turned OFF. In case drive lock mode is programmed to SPEED LOCK, all the vehicle doors will lock when vehicle attains the speed of 20 Km/hr.

#### NOTE:

*In case of SPEED LOCK mode, if any door is opened while driving, it will get cancelled. Once vehicle speed crosses 20 Km/hr, the LED on security switch will blink for 5 seconds as indication of door open.*

#### Drive Unlock Mode

Drive unlock can be programmed by Key or can be turned OFF. When programmed to Key, turning Ignition ON-OFF, then removing the key from the key cylinder will unlock all the doors. In case if drive unlock is programmed to OFF then no door will unlock by removing key from key cylinder.

### Siren Chirp ON/OFF feature

Siren Chirps can be programmed to ON or OFF. When siren chirp feature is disabled, siren will not chirp after Arm/Disarm by LOCK/UNLOCK button.

### Shock Sensor feature

This is a very important feature of security system. It enables protection of your vehicle against any shock. If anybody tries to intrude into the vehicle, the alarm triggers. The triggering of the alarm is in two stages, first acting as a warning to the intruder and then at full blast. The sensitivity of shock sensor can be adjusted as desired by the user.

## BEFORE DRIVING

### PROCEDURE TO PROGRAM FEATURE

No.	Feature	1 Chirp	2 Chirps	Default
1.	Drive Lock Mode	Speed	OFF	Speed
2.	Drive Unlock Mode	Key	OFF	Key
3.	Siren chirp ON/OFF	ON	OFF	ON
4.	Shock Sensor ON/OFF	ON	OFF	ON

#### Programming Drive Lock Mode

- a) Open the Driver Door of your vehicle.
- b) With your vehicle key in the Key cylinder, turn Ignition ON and then switch it OFF.
- c) Press and release the Security switch One time.
- d) Press and hold the Security switch.
- e) One chirp sound confirms entry into Drive Lock programming mode.
- f) Press the Key LOCK button (while holding the Security switch), a single chirp sound confirms mode changed to speed lock.
- g) Two-Siren chirp sound confirms Drive lock mode OFF.
- h) Release the Security switch.
- i) Turn the Ignition ON.

#### Programming Drive Unlock Mode

- a) Open the Driver Door of your vehicle.
- b) With your vehicle key in the Key cylinder, turn Ignition ON and then switch it OFF.
- c) Press and release the Security switch two times.
- d) Press and hold the Security switch.
- e) Two-chirp sound confirms entry into Drive unlock programming mode.
- f) Press the Key Lock button (while holding the Security switch), a single chirp sound confirms the mode changed to key Unlock.
- g) Two-siren chirp sound confirms the mode changed to Drive Unlock mode OFF.
- h) Release the Security switch.
- i) Turn the Ignition ON.

#### Programming Siren Chirp ON/OFF

- a) Open the Driver Door of your vehicle.
- b) With your vehicle key in the Key cylinder, turn Ignition ON and then switch it OFF.
- c) Press and release the Security switch Three times.
- d) Press and hold the Security switch.
- e) Three-chirp sound confirms entry into Siren Chirp ON/OFF programming mode.
- f) Press the Key Lock button (while holding the Security switch), a single chirp sound confirms the mode changed to Siren Chirp ON.
- g) Two-Siren chirp sound confirms the mode changed to Siren Chirp OFF.
- h) Release the Security switch.
- i) Turn the Ignition ON.



## BEFORE DRIVING

### Programming Shock Sensor ON/OFF

- a) Open the Driver Door of your vehicle.
- b) With your vehicle key in the Key cylinder, turn Ignition ON and then switch it OFF.
- c) Press and release the Security switch Four times.
- d) Press and hold the Security switch.
- e) Four-chirp sound confirms entry into Shock Sensor ON/OFF programming mode.
- f) Press the Key Lock button (while holding the Security switch), a single chirp sound confirms the mode changed to shock sensor ON.
- g) Two-Siren chirp sound confirms the mode changed to shock sensor OFF.
- h) Release the Security switch.
- i) Turn the Ignition ON.

### Shock Sensor Sensitivity Adjustment via Key

#### Full Blast Adjustment

Full Blast can be adjusted in 16 levels as mentioned below.

- a) Press UNLOCK button on Key to Unlock/ Disarm the System.
- b) Press LOCK button on Key to Lock/Arm the System.
- c) Within 5 seconds press LOCK & UNLOCK button simultaneously for at least 2 seconds Siren will give long chirp to confirm entry into sensitivity Adjustment mode.
  - i) Press Key LOCK button to adjust the sensitivity one step lower. Siren will give one chirp every time LOCK button is pressed till at level 1 where it will give a long chirp. When adjust to level 1, Full Blast will turn OFF
  - ii) Press Key UNLOCK button to adjust the sensitivity one step higher. Siren will give two chirps every time UNLOCK button is pressed till at level 16 where it will give a long chirp.

### Pre-warn Adjustment

Pre-warn can be adjusted in 16 levels as mentioned below:

- a) Press LOCK button on Key to Lock/Arm the System
- b) Press UNLOCK button on Key to UNLOCK/ Disarm the System
- c) Within 5 seconds press LOCK & UNLOCK button simultaneously for at least 2 seconds Siren will give Long chirp to confirm entry into Sensitivity Adjustment Mode.
  - i) Press LOCK button to adjust the sensitivity one step lower. Siren will give one chirp every time LOCK button is pressed till at level 1 where it will give a long chirp. When adjusts to level 1, prewarn will turn OFF.
  - ii) Press UNLOCK button to adjust the sensitivity one step higher. Siren will give two chirps every time UNLOCK button is pressed till at level 16 where it will give a long chirp.

## BEFORE DRIVING

### Mode Programming (Valet/Alarm)

The valet mode can be programmed as follows:

- i) Close the driver door.
- ii) Turn Ignition ON-OFF quickly.
- iii) Press and hold Security switch for 3 seconds minimum.
- iv) Change to valet mode is confirmed by LED ON for 1 minute.

The alarm mode can be programmed as follows:

Repeat step (i)-(iii) to program the system to alarm mode.

Change to Alarm mode will be confirmed by one long siren chirp and LED OFF.

### Program Customer Pincode (Personalised Pincode)

The Personalised 4-digit number can be changed from the factory default to ensure Personalised Security.

#### Pin code entry

- a) Disarm the system.
- b) Open the Driver Door.
- c) Turn Ignition ON then OFF.
- d) Within 5 seconds press and release security switch 5 times. A short chirp followed by long chirps confirms entry into Pin Code programming mode.
- e) Press LOCK button on Key, after a single chirp enter the First digit (within 1-9) by pressing security switch (for e.g. to enter 2 press and release security switch two times).
- f) Press LOCK button on Key, after two chirps enter the Second digit (within 1-9) by pressing security switch.
- g) Press LOCK button on Key, after 3 chirps enter the Third digit (within 1-9) by pressing security switch.
- h) Press LOCK button on Key, after 4 chirps enter the Fourth digit (within 1-9) by pressing security switch.

### Emergency Disarm by personalised pin code

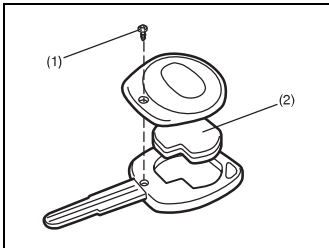
The Personalised 4-Digit Pin Code acts as a secret Key, to Emergency Disarm the vehicle.

- a) Turn the Ignition ON, OFF and then ON.
- b) Enter the First digit (for e. g. to enter 2 press and release security switch twice)
- c) Turn the Ignition OFF then ON.
- d) Enter the Second digit.
- e) Turn the Ignition OFF and then ON.
- f) Enter the third Digit.
- g) Turn the Ignition OFF and then ON
- h) Enter the Last Digit.
- i) Turn the Ignition OFF and then ON.

The vehicle will get disarmed.

*Note: The default pin will be provided by the dealer at the time of delivery. It is recommended to personalize the pin for increased security. The pin must be remembered as it is not possible to retrieve a lost pin.*

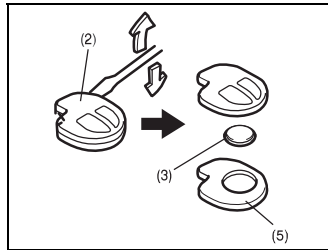
### Transmitter battery Replacement of the Battery



If the transmitter battery gets discharged, replace the battery with a new one.

To replace the battery of the transmitter:

- 1) Remove the screw (1), and open the transmitter cover.
- 2) Remove the transmitter (2).
- 3) Put the edge of a flat blade screw driver in the slot of the transmitter (2) and pry it open.
- 4) Replace the battery (3) (Lithium disc type CR1620) so that its +ve terminal faces the bottom cover of the transmitter (5).

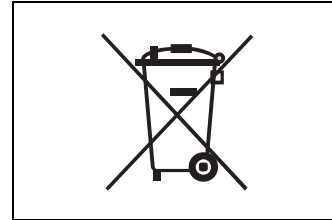


- 5) Close the transmitter and install it into the transmitter holder.
- 6) Close the transmitter cover, install and tighten the screw (1).
- 7) Make sure the door locks can be operated with the transmitter.

*Note: Normal battery life is approximately 2 years, but varies depending on usage. It is advisable to get battery replaced from MARTI SUZUKI Authorized workshop.*

#### CAUTION

**Do not remove the screw from the key unnecessarily as it damages the screw head. Kindly replace the screw once the transmitter battery is changed.**



#### CAUTION

**Dispose off the used battery properly according to applicable rules or regulations. Do not dispose off lithium batteries with ordinary household trash.**

#### ⚠ WARNING

**Swallowing a lithium battery may cause serious internal injury. Do not allow anyone to swallow a lithium battery. Keep lithium batteries away from children and pets. If swallowed, contact a physician immediately.**

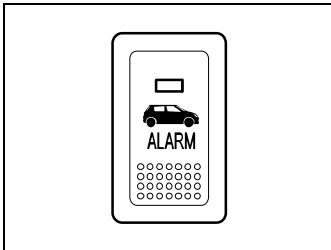
## BEFORE DRIVING

### TROUBLESHOOTING

SYMPTOMS	PROBABLE CAUSES	REMEDIES
Transmitter function (Unlock/Lock/Panic)not working	<ol style="list-style-type: none"><li>1. Battery of the transmitter is weak.</li><li>2. Transmitter is exposed to water or it is wet.</li><li>3. D/L or Dome fuse for controller is blown in the vehicle.</li><li>4. In case if any door is open or door sensor is shorted with the body ground, remote will not activate the central locking/ alarm system.</li></ol>	<ol style="list-style-type: none"><li>1. Check the battery.</li><li>2. Dry the transmitter and check it.</li><li>3. Check and replace the D/L or Dome fuse.</li><li>4. Check if all doors are properly closed and door switch functioning is O.K.</li></ol>
Operation distance of the transmitter is less than 20m but still transmitter (Unlock/Lock/Panic) is not working	<ol style="list-style-type: none"><li>1. Battery of the transmitter is weak.</li><li>2. Strong RF interference. (e.g. Radio Towers, High Voltage Transmission line near by)</li></ol>	<ol style="list-style-type: none"><li>1. Check the battery.</li><li>2. Drive the vehicle away from the particular spot and re-test the control distance.</li></ol>
It is difficult to activate or deactivate the system in certain area using the transmitter.	<ol style="list-style-type: none"><li>1. The strong interference caused by excessive RF activity in a particular area</li></ol>	<ol style="list-style-type: none"><li>1. The interference is temporary and only while the vehicle is in that area.</li></ol>
Alarm is not triggered even if any door(s)/hood/trunk opened in arm stage.	<ol style="list-style-type: none"><li>1. The contact point of the hood or door (s) or trunk switch is faulty.</li><li>2. The connection of the hood or door(s) or trunk switch is loose.</li></ol>	<ol style="list-style-type: none"><li>1. Replace the defective Switch.</li><li>2. Make proper connection.</li></ol>
Siren does not sound when alarm is triggered.	<ol style="list-style-type: none"><li>1. The connection of the siren wire is loose.</li><li>2. Siren is faulty.</li></ol>	<ol style="list-style-type: none"><li>1. Make proper connection.</li><li>2. Change the siren.</li></ol>

**BEFORE DRIVING**

**Security System (if equipped)**

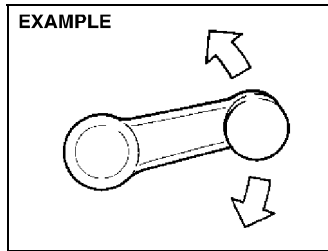


68KH093

If your vehicle is equipped with the security system, contact your dealer for further information.

**Windows**

**Manual Window Control (if equipped)**



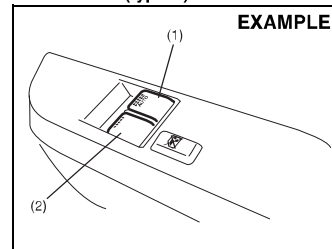
60G010

Raise or lower the door windows by turning the handle located on the door panel.

**Electric Window Controls (if equipped)**

The electric windows can only be operated when the ignition switch is in the "ON" position.

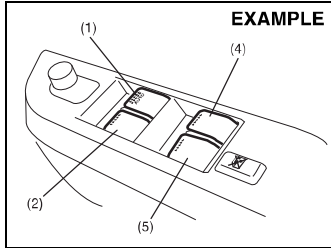
**Driver's door (type A)**



67LH014

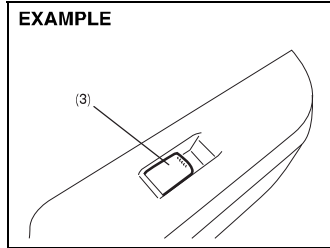
## BEFORE DRIVING

### Driver's door (type B)

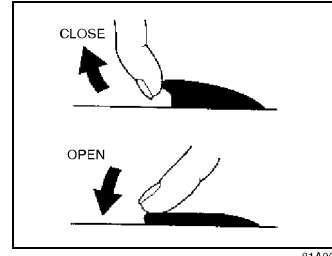


The driver's door has a switch (1) to operate the driver's window, and a switch (2) to operate the front passenger's window or there are switches (4), (5), to operate the rear left and right passenger windows, respectively.

### Passenger's door



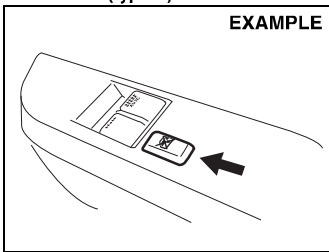
The passenger's door has a switch (3) to operate that passenger's window.



To open a window, push the top part of the switch and to close the window, lift up the top part of the switch.

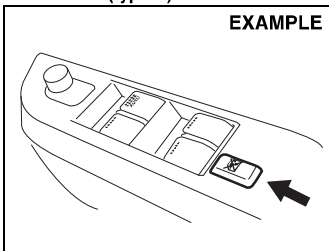
The driver's window has an "auto-down" feature for added convenience (at toll booths or drive-through restaurants, for example). This means you can open the window without holding the window switch in the "Down" position. Press the driver's window switch completely down and release it. To stop the window before it reaches the bottom, pull the switch up briefly.

Lock switch (type A)



67LH017

Lock switch (type B)



67LH018

The driver's door also has a lock switch for the passenger's windows. When you push in the lock switch, the passenger's windows cannot be raised or lowered by operating any of the switches (2), (3), (4) or (5). To restore normal operation, release the lock switch by pushing again.

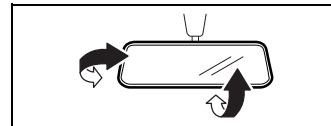
**▲ WARNING**

- You should always lock the passenger's window operation when there are children in the vehicle. Children can be seriously injured if they get part of their body caught by the window during operation.
- To avoid injuring an occupant by window entrapment, be sure no part of the occupant's body such as hands or head is in the path of the electric windows when closing them.
- Always remove the ignition key when leaving the vehicle even if only for a short time. Also do not leave children alone in a parked vehicle. Unattended children could use the electric window switches and get trapped by the window.

**NOTE:**  
If you drive with one of the rear windows open, you may hear a loud sound caused by air vibration. To reduce the sound, open the driver's or front passenger's window, or narrow the rear window opening.

Mirrors

Inside Rearview Mirror



6AKH007

You can adjust the inside rearview mirror by hand so as to see the rear of your vehicle in the mirror.

## BEFORE DRIVING

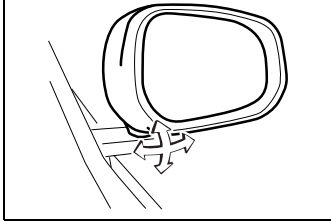
### Outside Rearview Mirrors

Adjust the outside rearview mirrors so you can just see the side of your vehicle in the mirrors.

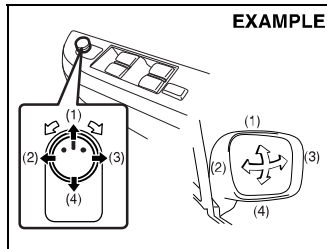
#### ⚠ WARNING

Be careful when judging the size or distance of a vehicle or other object seen in the side convex mirror. Be aware that objects look smaller and appear farther away than when seen in a flat mirror.

#### EXAMPLE



### Electric Mirrors (if equipped)



The switch to control the electric mirrors is located on the driver's door panel. You can adjust the mirrors when the ignition switch is in the "ACC" or "ON" position. To adjust the mirrors:

- 1) Move the selector switch to the left or right to select the mirror you wish to adjust.
- 2) Press the outer part of the switch that corresponds to the direction in which you wish to move the mirror.
- 3) Return the selector switch to the center position to help prevent unintended adjustment.

### Front Seats

#### Seat Adjustment

#### ⚠ WARNING

Never attempt to adjust the driver's seat or seatback while driving. The seat or seatback could move unexpectedly, causing loss of control. Make sure that the driver's seat and seatback are properly adjusted before you start driving.

#### ⚠ WARNING

To avoid excessive seat belt slack, which reduces the effectiveness of the seat belts as a safety device, make sure that the seats are adjusted before the seat belts are fastened.



**BEFORE DRIVING**

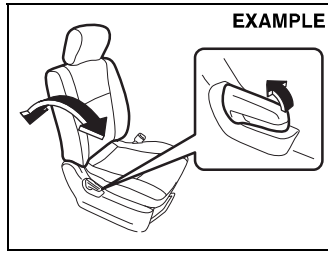
**Adjusting Seat Position**



The adjustment lever for each front seat is located under the front of the seat. To adjust the seat position, pull up on the adjustment lever and slide the seat forward or rearward. After adjustment, try to move the seat forward and rearward to ensure that it is securely latched.

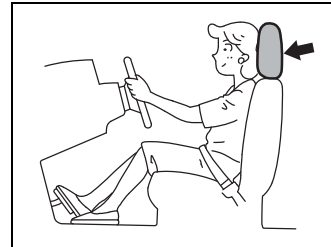
**Adjusting Seatbacks**

**⚠ WARNING**  
All seatbacks should always be in an upright position when driving, or seat belt effectiveness may be reduced. Seat belts are designed to offer maximum protection when seatbacks are in the upright position.



To adjust the seatback angle of front seats, pull up the lever on the outboard side of the seat, move the seatback to the desired position, and release the lever to lock the seatback in place.

**Adjustable Head Restraints (if equipped)**



Head restraints are designed to help reduce the risk of neck injuries in the case of an accident. Adjust the head restraint to the position which places the center of the head restraint closest to the top of your ears. If this is not possible for very tall passengers, adjust the head restraint as high as possible.

**⚠ WARNING**

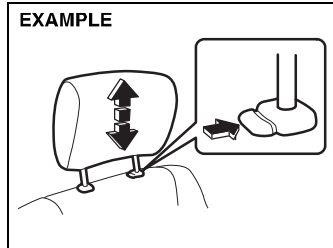
- Never drive the vehicle with the head restraints removed.
- Do not attempt to adjust the head restraint while driving.

## BEFORE DRIVING

### NOTE:

*It may be necessary to recline the seatback to provide enough overhead clearance to remove the head restraint.*

### Front



67LH022

To raise the front head restraint, pull upward on the restraint until it clicks. To lower the restraint, push down on the restraint while holding in the lock lever. If a head restraint must be removed (for cleaning, replacement, etc.), push in the lock lever and pull the head restraint all the way out.

### Rear Seats

#### Adjustable Head Restraints (if equipped)

Head restraints are designed to help reduce the risk of neck injuries in the case of an accident.

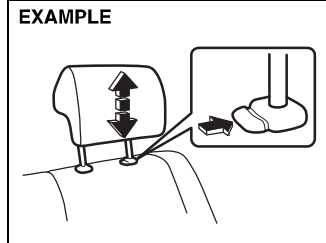
#### ⚠ WARNING

- Never drive the vehicle with the head restraints removed.
- Do not attempt to adjust the head restraint while driving.

### NOTE:

*It may be necessary to fold forward the seatback to provide enough overhead clearance to remove the head restraint.*

Adjust the head restraint to the position which places the center of the head restraint closest to the top of your ears. If this is not possible for very tall passengers adjust the head restraint as high as possible.



67LH023

To raise the rear head restraint, pull upward on the restraint until it clicks. To lower the restraint, push down on the restraint while holding in the lock lever. If a head restraint must be removed (for cleaning, replacement, etc.), push in the lock lever and pull the head restraint all the way out.

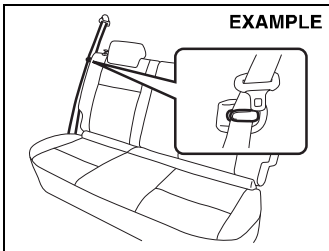
When installing a child restraint system, raise the head restraint to the most upper position.

## BEFORE DRIVING

### Folding Rear Seat

The rear seat of your vehicle can be folded forward to provide additional cargo space.

To fold the rear seat forward:

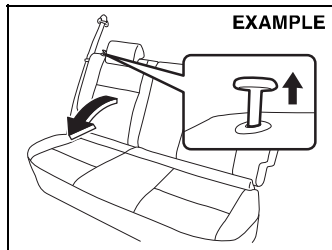


- 1) Hook the webbing of the outboard lap-shoulder belts in the belt hangers.

### CAUTION

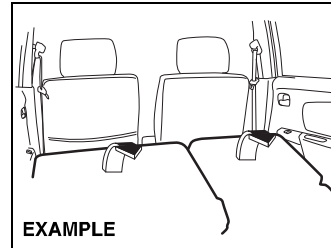
- When you move a seatback, make sure the belt webbing is hooked in the seat belt hangers so the seat belts are not caught by the seatback, seat hinge, or seat latch. This helps prevent damage to the belt system.
- Make sure the belt webbing is not twisted.

- 2) Lower the adjustable head restraint (if equipped) fully.



- 3) Pull up the knob on the top of each split seat, and fold the seatbacks forward.

To return the seat to the normal position, follow the procedure below.



Raise the seatback until it locks into place.

After returning the seat, try moving the seatback to make sure they are securely latched.