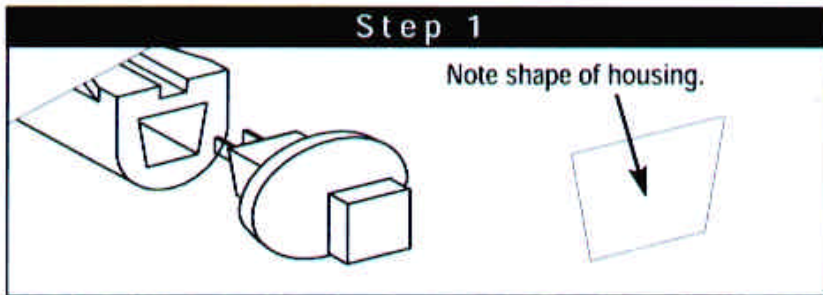
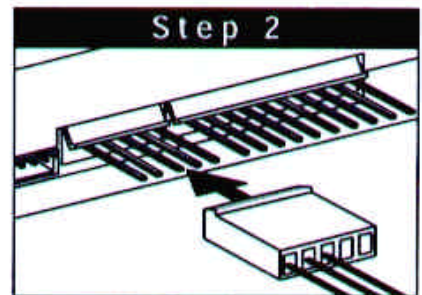
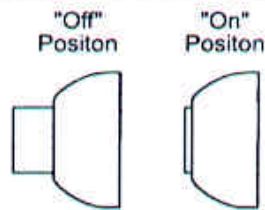


CARC5HF User's Manual

CA-RC5HF Transmitter Programming

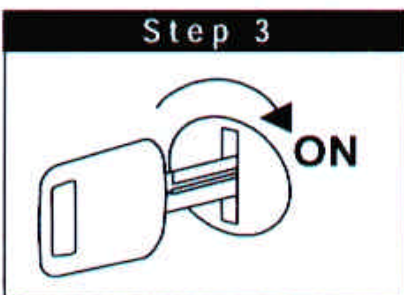


Insert the Valet Switch and Make Sure the Valet/Override Switch is in the "Off" Position

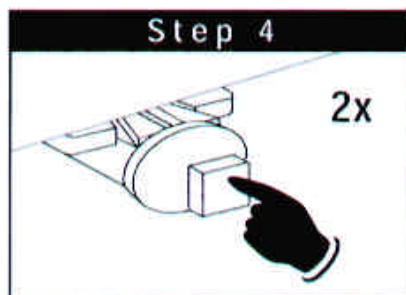


Plug In the Power Harness

The siren/horn will start sounding, the parking lights will flash and the LED will begin flashing

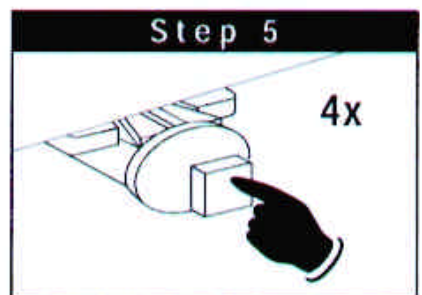


Turn On Ignition



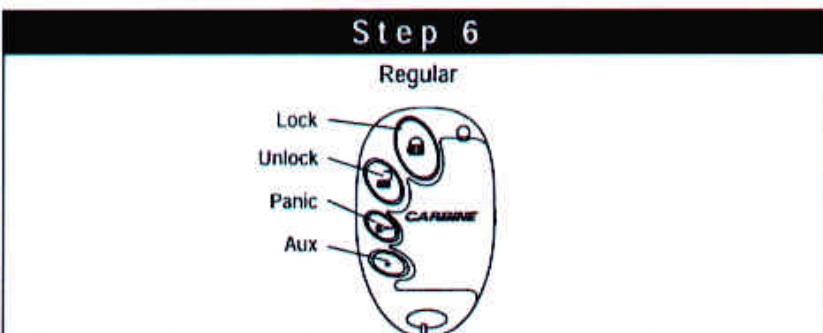
Push the Valet Switch 2 Times
(Represent 1 Time On/Off)

The siren/horn will stop sounding, the parking lights will stop flashing and the LED will be solid red.



Push the Valet Switch 4 Times
(Represent 2 Times On/Off)

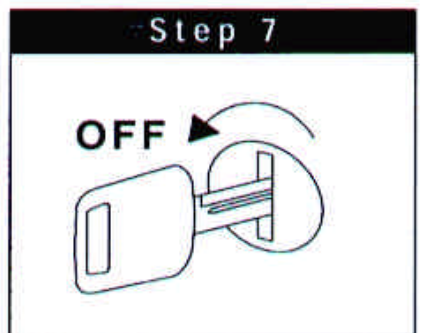
The siren/horn will chirp 1 time. You are now in the transmitter code programming mode.



Push Lock Button

The LED will begin flashing slowly and the horn/siren will emit 1 short chirp. The code has now been learned.

The transmitters are pre-coded to the receiver. You should use these instructions when programming in new transmitter to the module.



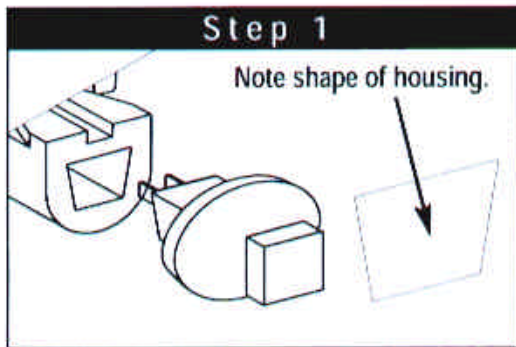
Turn Off the Ignition

The horn/siren will emit 1 short chirp and 1 long chirp. You are now out of the consumer transmitter code learning mode. The LED is off.

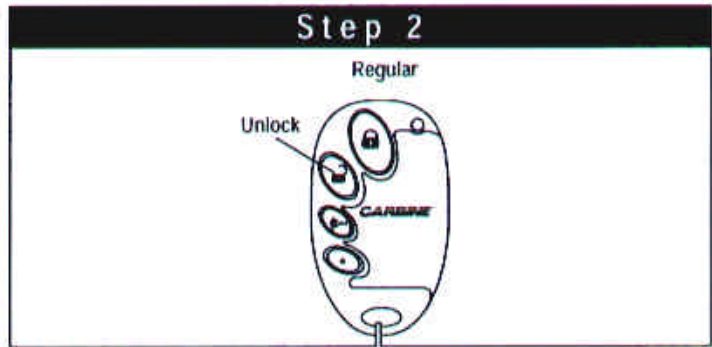
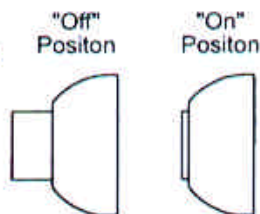
CA-RC5HF Remote Feature Programming

When the Carbine security system control module learns the transmitter operating code, a specific group of operating features are automatically programmed to a default setting. These default settings can be changed by following the enclosed procedure and using the consumer transmitter for programming.

#	Programmable Alarm Feature	Default Setting
1	Chirp Status Indicator and Door Unlock Pluses	Chirps on with Single Unlock Pulse
2	Last Door Closed Automatic Arming	Automatic Arming of Alarm "Off"
3	Ignition Key Controlled Door Lock/ Unlock	Off
4	Panic Button (Panic or Channel 3 Operation) (4-Button Code Hopping Transmitter Only)	Panic

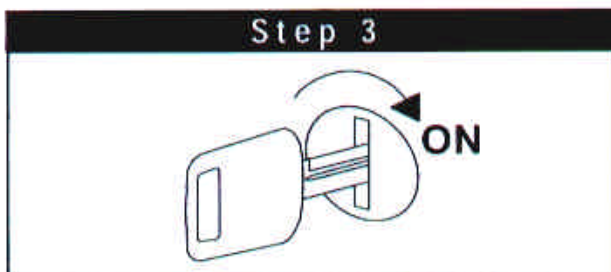


Insert the Valet Switch and Make Sure the Valet/Override Switch is in the "Off" Position



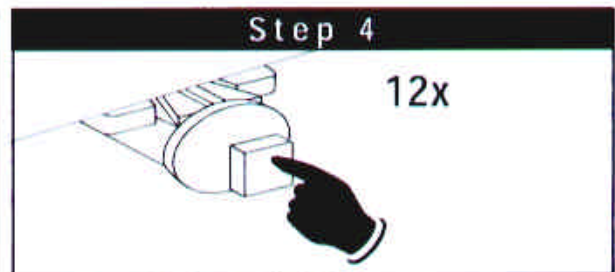
Press the Unlock Button to Disarm the Security System

The LED will be off and the horn/siren will emit 2 chirps



Turn On the Ignition

The LED will remain off.



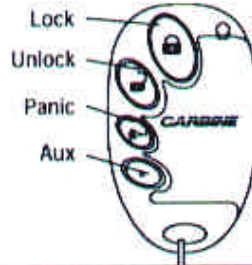
Push the Valet Switch 12 Times
(Represent 6 Times On/Off)

The LED will be on solid and the horn/siren will emit 1 long then 1 short chirp. You are now in the "Remote Feature Programming" mode.

CA-RC5HF Remote Feature Programming (Continued)

Step 5

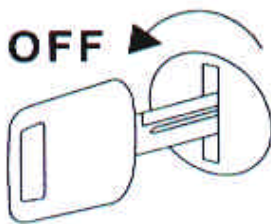
Regular



#	Transmitter Button	Function	Confirmation = Change Function
1	LOCK	Chirp Status Indication	1 Beep = Chirp Status Indication "On" with Single Unlock Pulse
			2 Beeps = Chirp Status Indication "Off" with Single Unlock Pulse
			3 Beeps = Chirps "On" with Dual Unlock Pulses On
			4 Beeps = Chirps "Off" with Dual Unlock Pulses On
2	UNLOCK	Last Door Closed Automatic Arming	1 Beep = Automatic Arming "On", Alarm will arm 10 seconds after door is closed and reararm 10 seconds after remote disarm.
			2 Beeps = Automatic Arming "On", Alarm will arm 20 seconds after door is closed and reararm 20 seconds after remote disarm.
			3 Beeps = Automatic Arming "On", Alarm will arm 30 seconds after door is closed and reararm 60 seconds after remote disarm.
			4 Beeps = Automatic Arming "Off" *
3	LOCK + UNLOCK	Ignition Key Controlled Door Locks	1 Beep = Door will Lock 3 seconds after Ignition is Turned "On". Door will not Unlock when Ignition is Turned "Off".
			2 Beeps = Door will Lock 3 seconds after Ignition is Turned "On". Door will Unlock when Ignition is Turned "Off".
			3 Beeps = Door will not Lock 3 seconds after Ignition is Turned "On". Door will not Unlock when Ignition is Turned "Off" *.
4A	Panic 4-Button Code Hopping Transmitter Only	Panic Operation or Channel #3 Operation from Panic Transmitter Button	3 Beeps = Panic Button Operates Channel #3 Output of Alarm
			4 Beeps = Panic Button Operates as a Dedicated Panic Button *

* Indicates Default Settings

Step 6



Turn Off the Ignition

The horn/siren will emit 1 short chirp and 1 long chirp. You are now out of the "Remote Feature Programming" mode. The LED is off.

The NUTEK CORPORATION Model: CARC5HF (referred to as the EUT in this report) is a Transmitter of car alarm security system. It offers wireless remote control, ideal for use in vehicle security system to activate the function of center door lock control system and car searching except the alarm system.

A major technical descriptions of EUT is described as following:

- A). Fundamental Frequency: 433.92 MHz
- B). Modulation : Pulse Modulation
- C). Antenna Designation: Non-User Replaceable (Fixed)
- D). Power Supply: 12V, Battery Operated
- E). Receiver type : Superheterodyne

Fundamental Frequency	433.92MHz
Power Source	12V Battery
Transmitting Time	Periodic \leq 5 seconds
Associated Receiver	FCC DOC

FCC Statement

This device complies with part 15 of the FCC Rules. Operation is subject to the following two conditions: (1) this device may not cause harmful interference. (2) this device must accept any interference received, including interference that may cause undesired operation

Warning:

Note: This equipment has been tested and found to comply with the limits for digital device, pursuant to Part 15 of FCC Rules. These limits are designed to provide reasonable protection against harmful interference in a residential installation. This equipment generates, uses and can radiate radio frequency energy and, if not installed and used in accordance with the instructions, may cause harmful interference in to radiate communications. However, there is no guarantee that interference will not occur in a particular installation. If this equipment does cause harmful interference to radio or television reception, which can be determined by turning the equipment off and on, the user is encouraged to try to correct the interference by one or more of the following measures:

- Reorient or relocate the receiving antenna
- Increase the separation between the equipment and receiver.
- Connect the equipment into an outlet on a circuit different from that to which the receiver is connected.
- Consult the dealer or an experienced radio/TV technician for help.

This device complies with part 15 of the FCC rules. Operation is subject to the following two conditions:

- (1) This device may not cause harmful interference: and
- (2) This device must accept any interference received: including interference that may cause undesired operation.

THE MANUFACTURER IS NOT RESPONSIBLE FOR ANY RADIO OR TV INTERFERENCE CAUSED BY UNAUTHORIZED MODIFICATIONS TO THIS EQUIPMENT. SUCH MODIFICATIONS COULD VOID THE USER'S AUTHORITY TO OPERATE THE EQUIPMENT.

Note: The manufacturer is not responsible for any radio or TV interference caused by unauthorized modification to this equipment. Such modification could void the user's authority to operate the equipment.