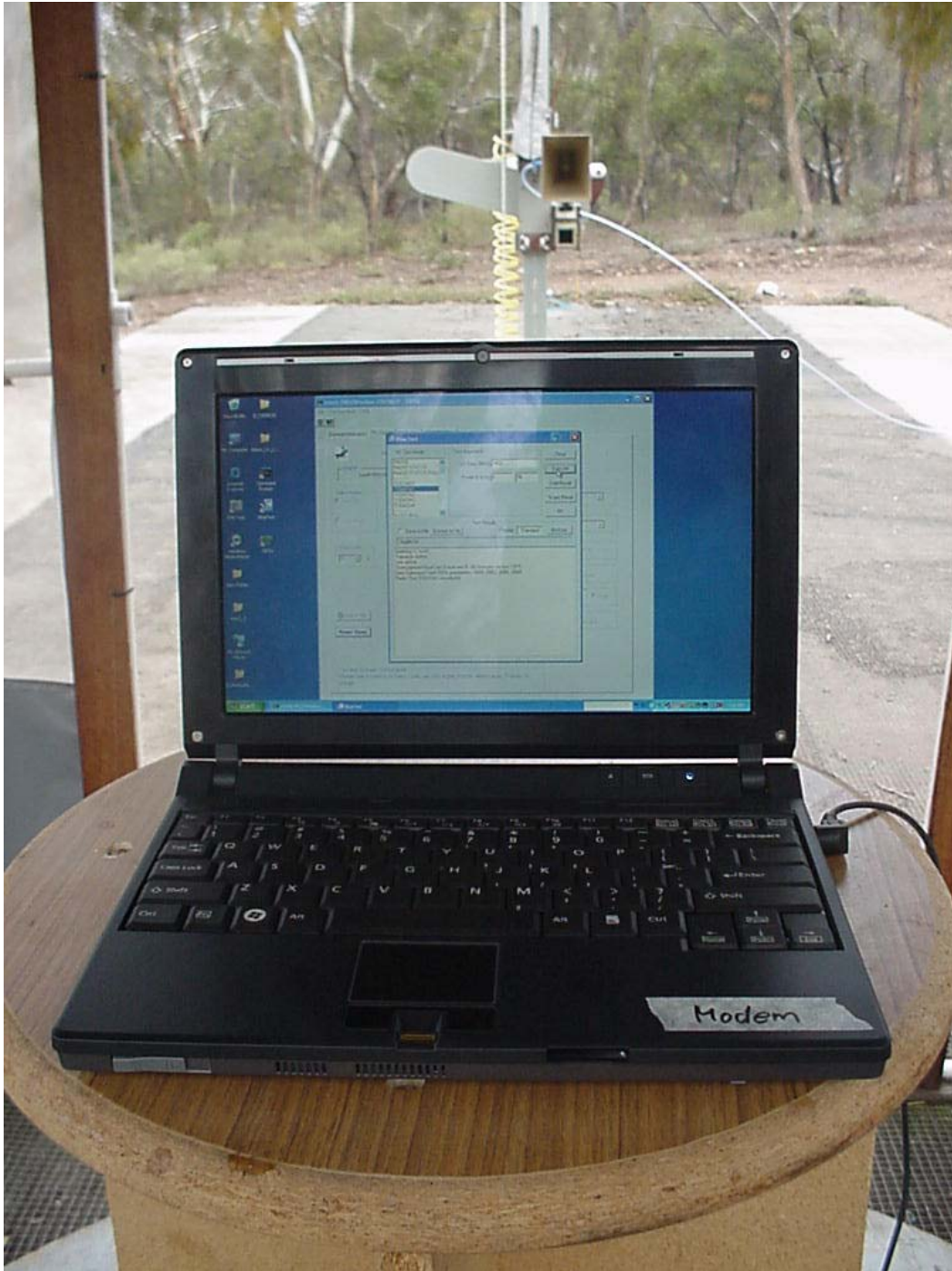


EMC Technologies Report Number: M070228_Cert_4965AGN_NII_BT

APPENDIX B2

Test Setup Photograph

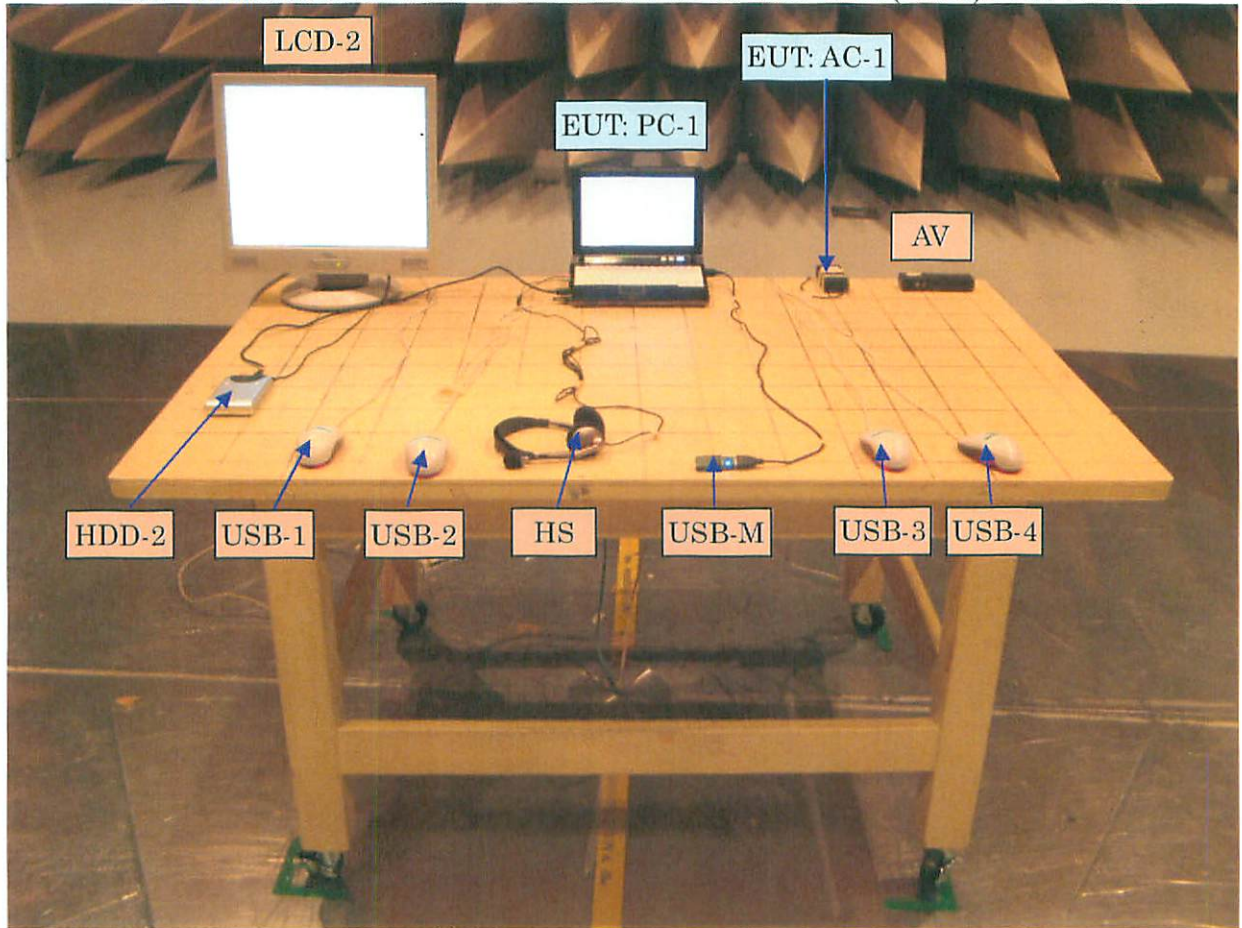
Radiated Spurious Emissions Test Setup



FCC Part 15 class B test set up photos

Photos extracted from report FG06-142EAL-2

Photo-1.1 Radiated emission measurement for 30-1000 MHz (Front) First edition



• HUB and PC-2 were set at outside of the chamber.

Photo-1.2 Radiated emission measurement for 30-1000 MHz (Back) First edition

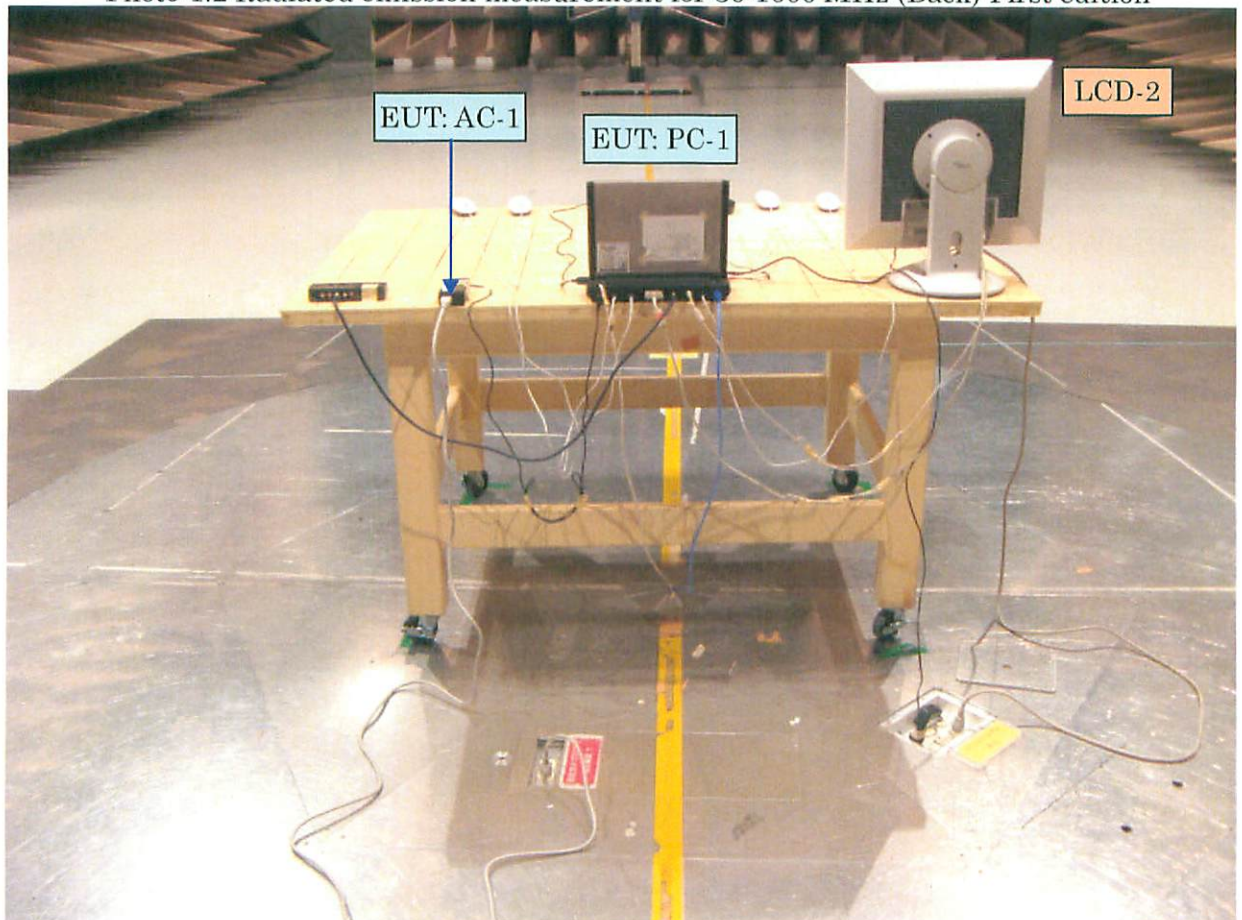


Photo-1.3 Radiated emission measurement for 1-6 GHz (Front) First edition

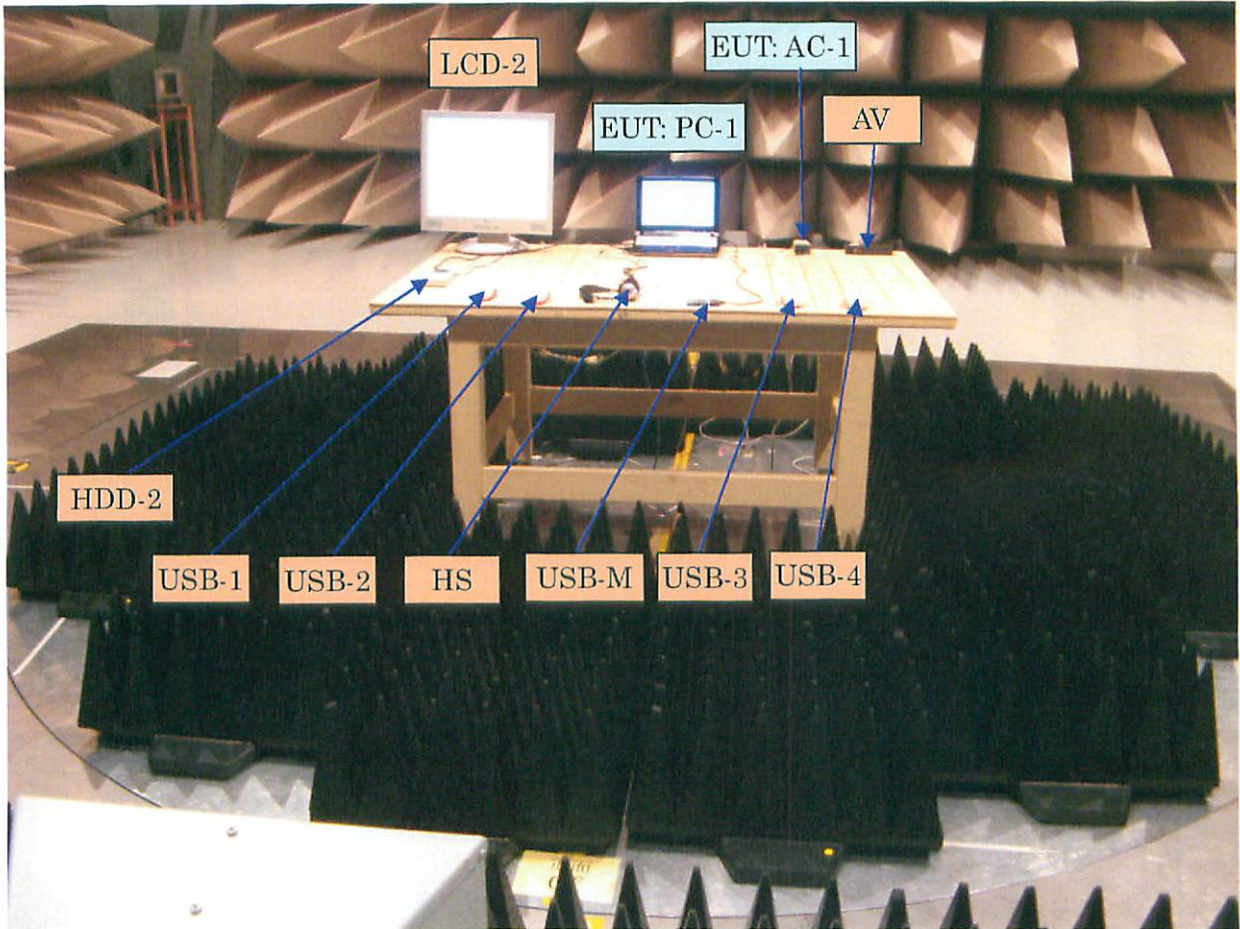
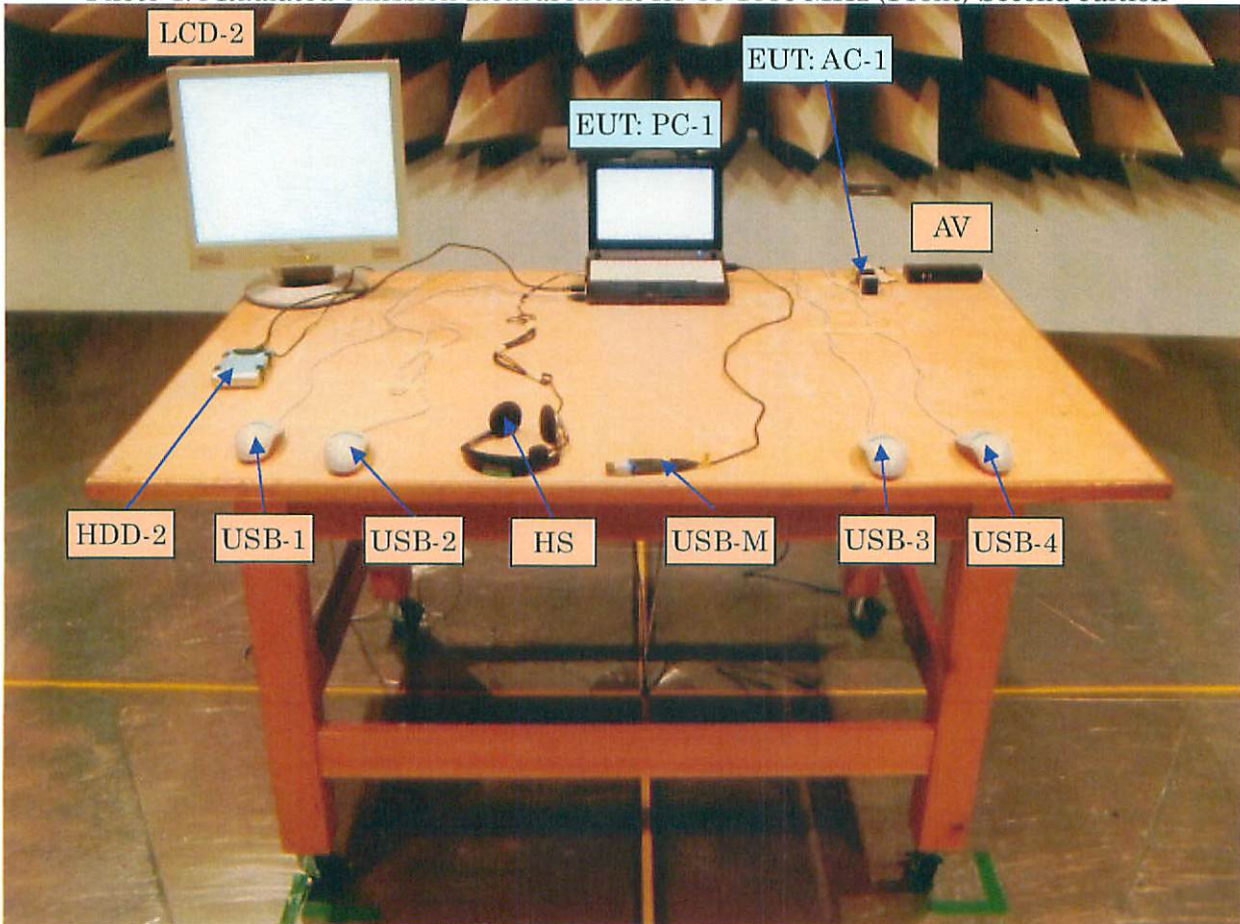


Photo-1.4 Radiated emission measurement for 30-1000 MHz (Front) Second edition



- HUB and PC-2 were set at outside of the chamber.

Photo-1.5 Radiated emission measurement for 30-1000 MHz (Back) Second edition

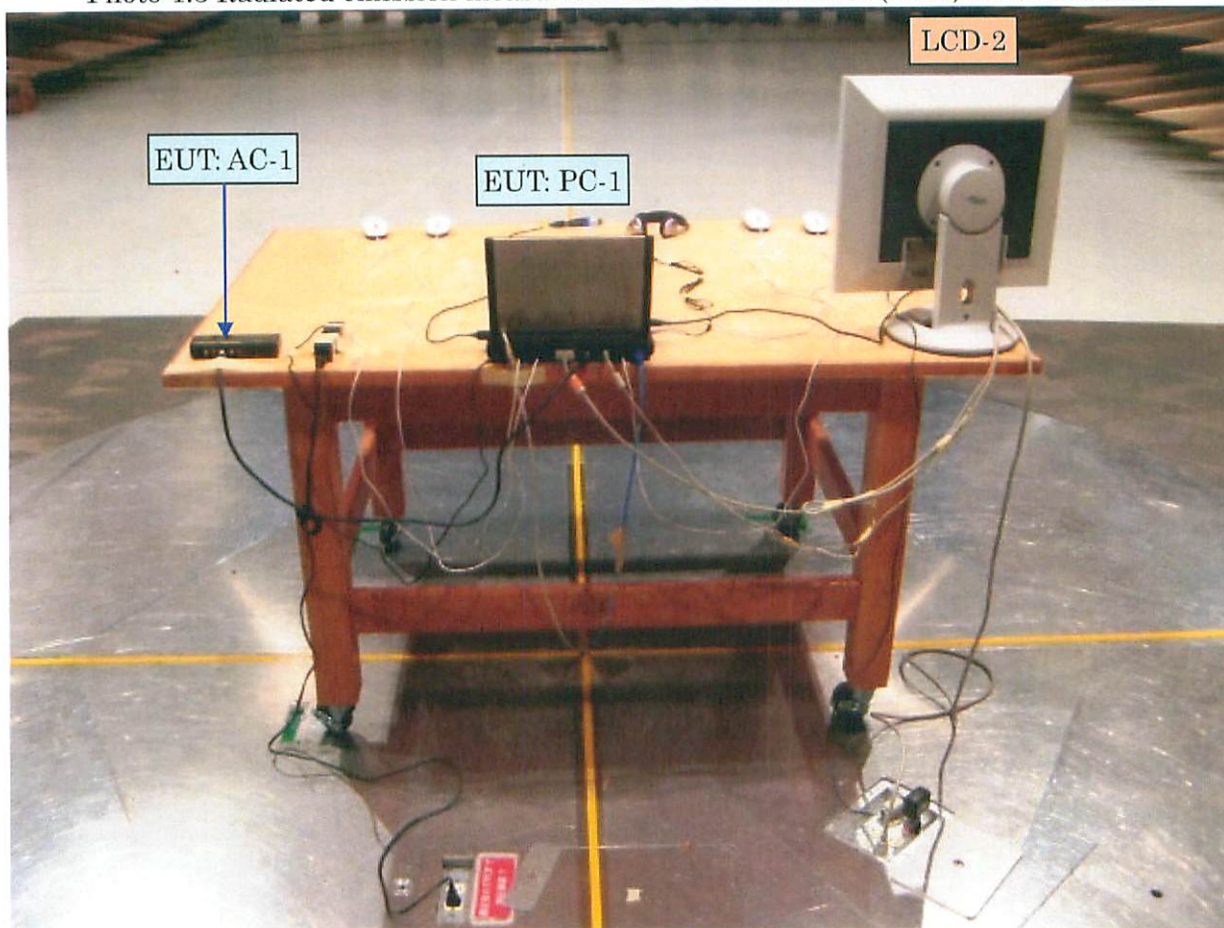


Photo-2.1 Conducted emission measurement First edition

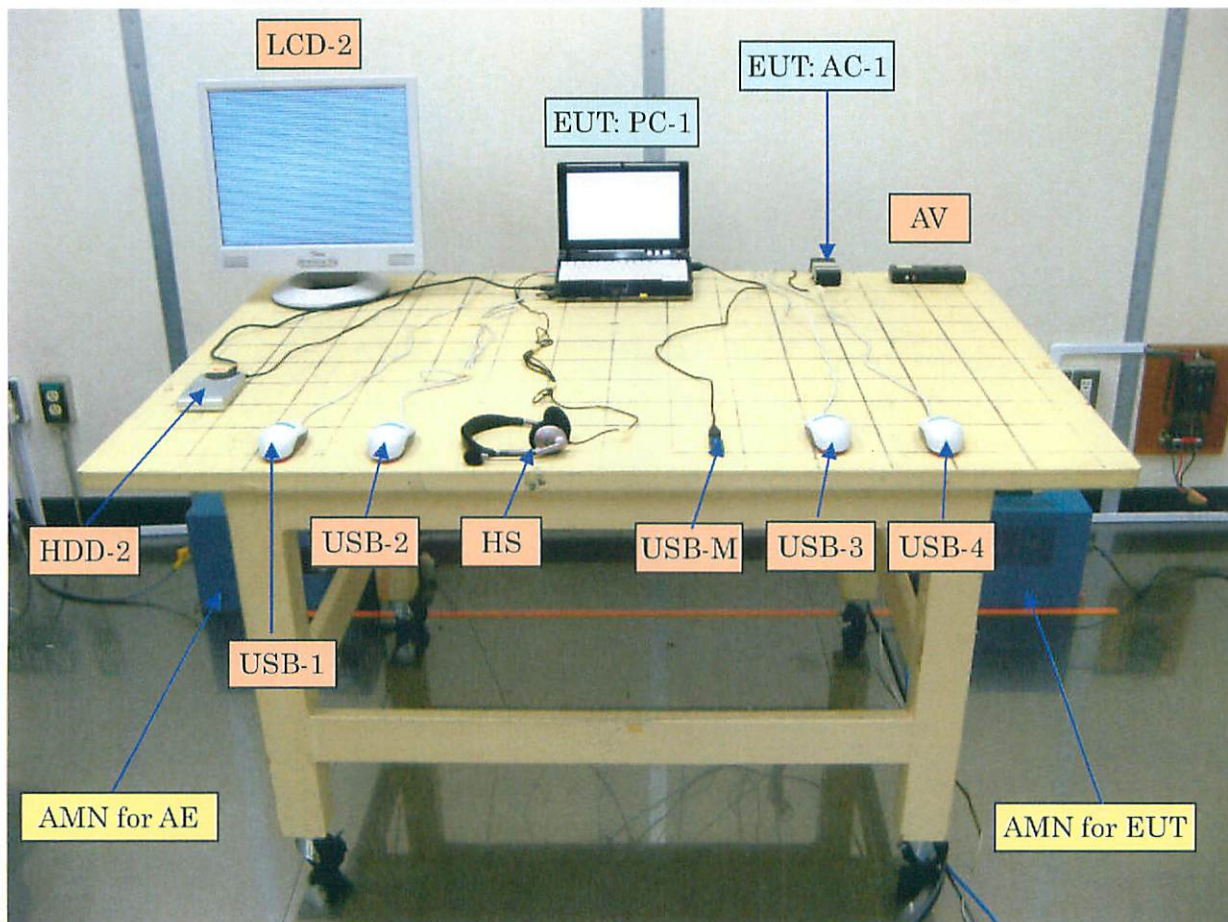


Photo-2.2 Conducted emission measurement for Telecom port

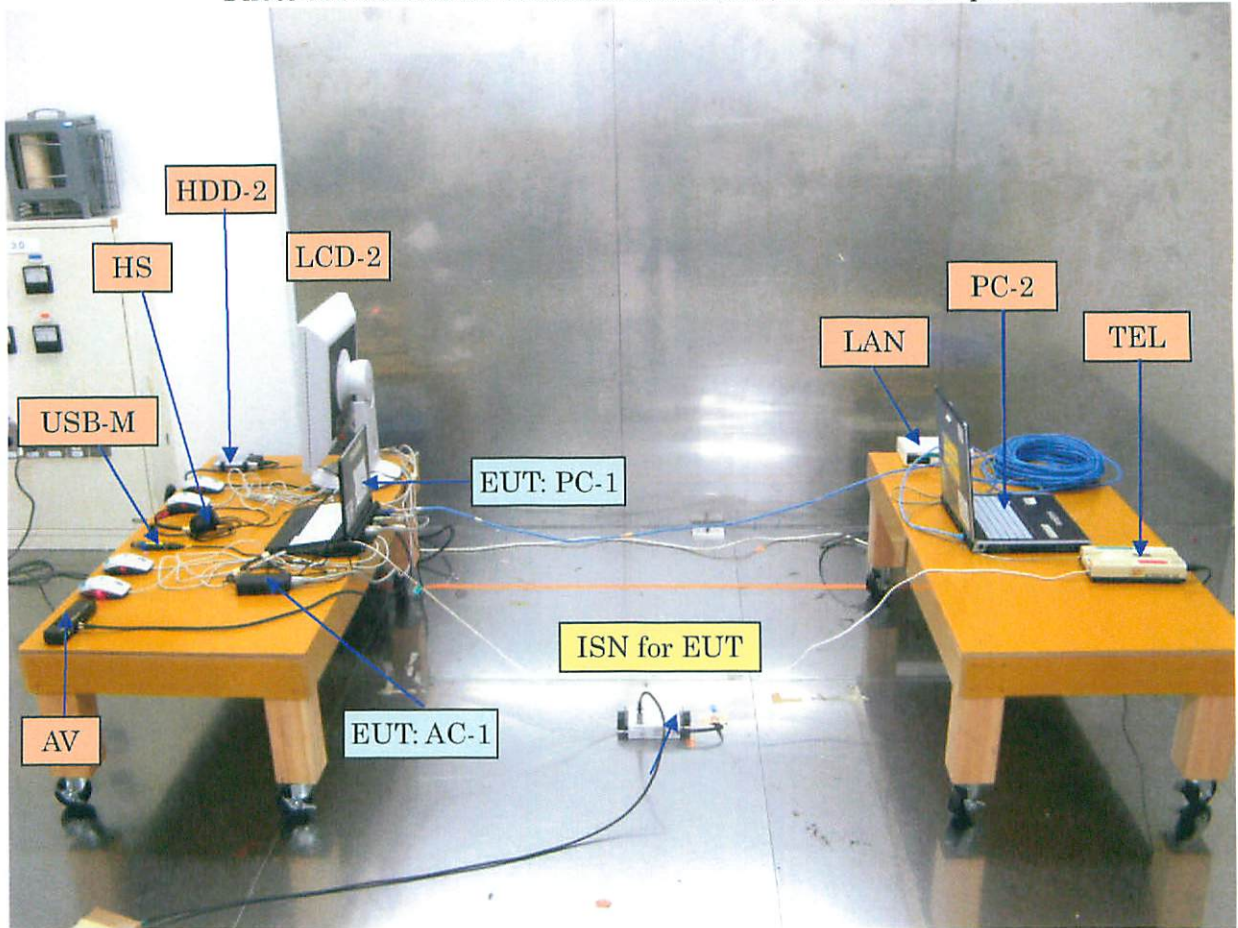


Photo-2.3 Conducted emission measurement for LAN port

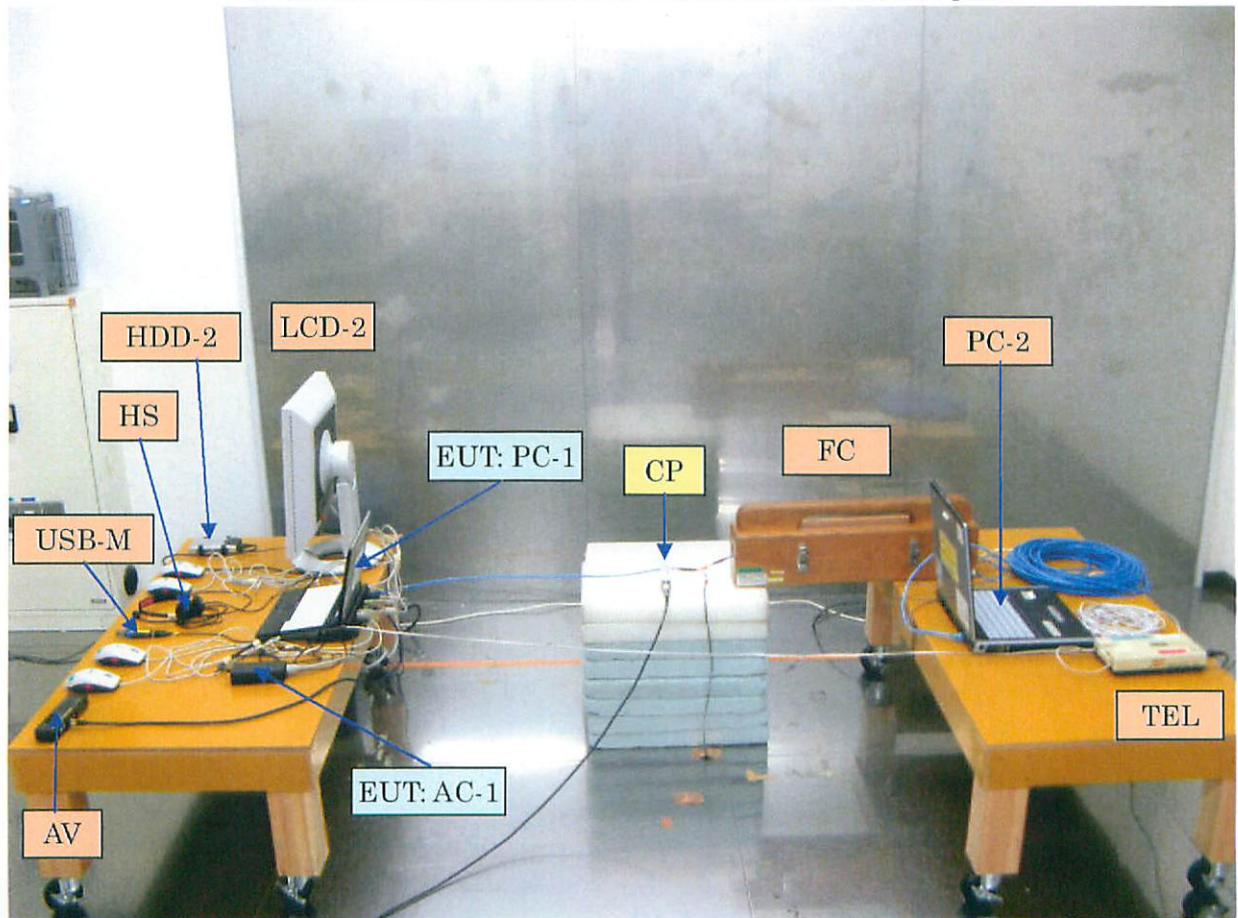


Photo-2.4 Conducted emission measurement Second edition

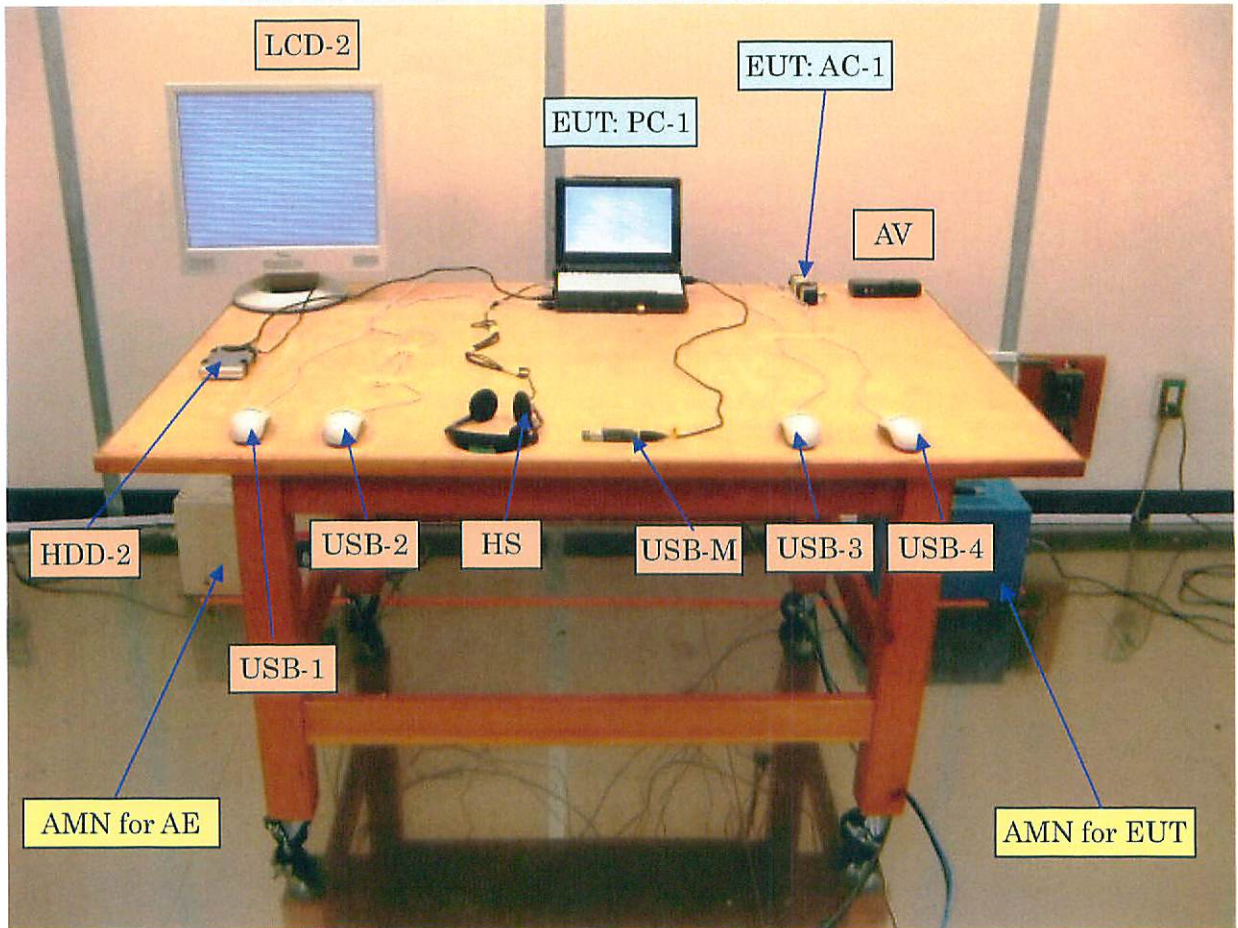


Photo-3.1 Label: P7230

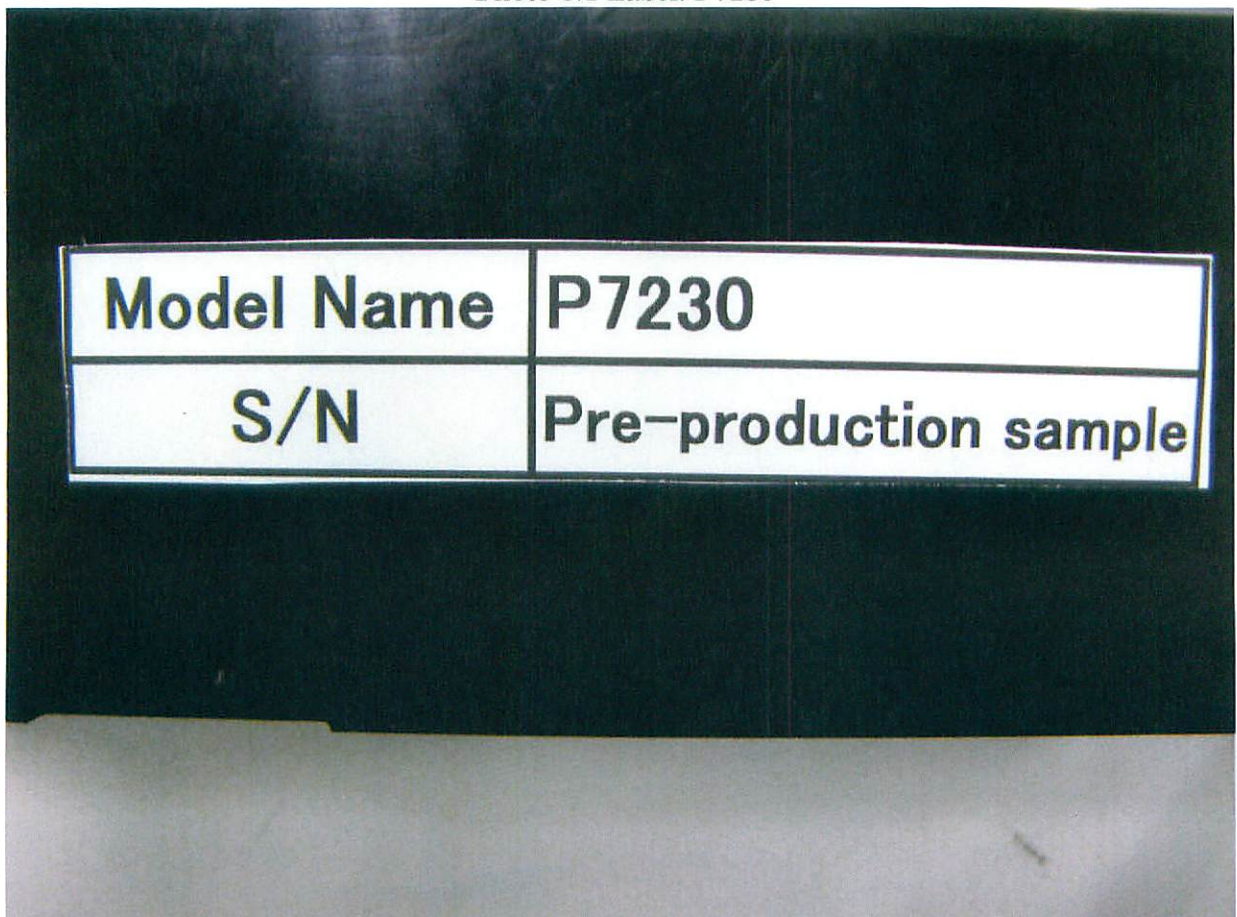


Photo-3.2 Label: AC adapter: SED80N3-16.0



Photo-3.3 Label: AC adapter: SED80N2-16.0

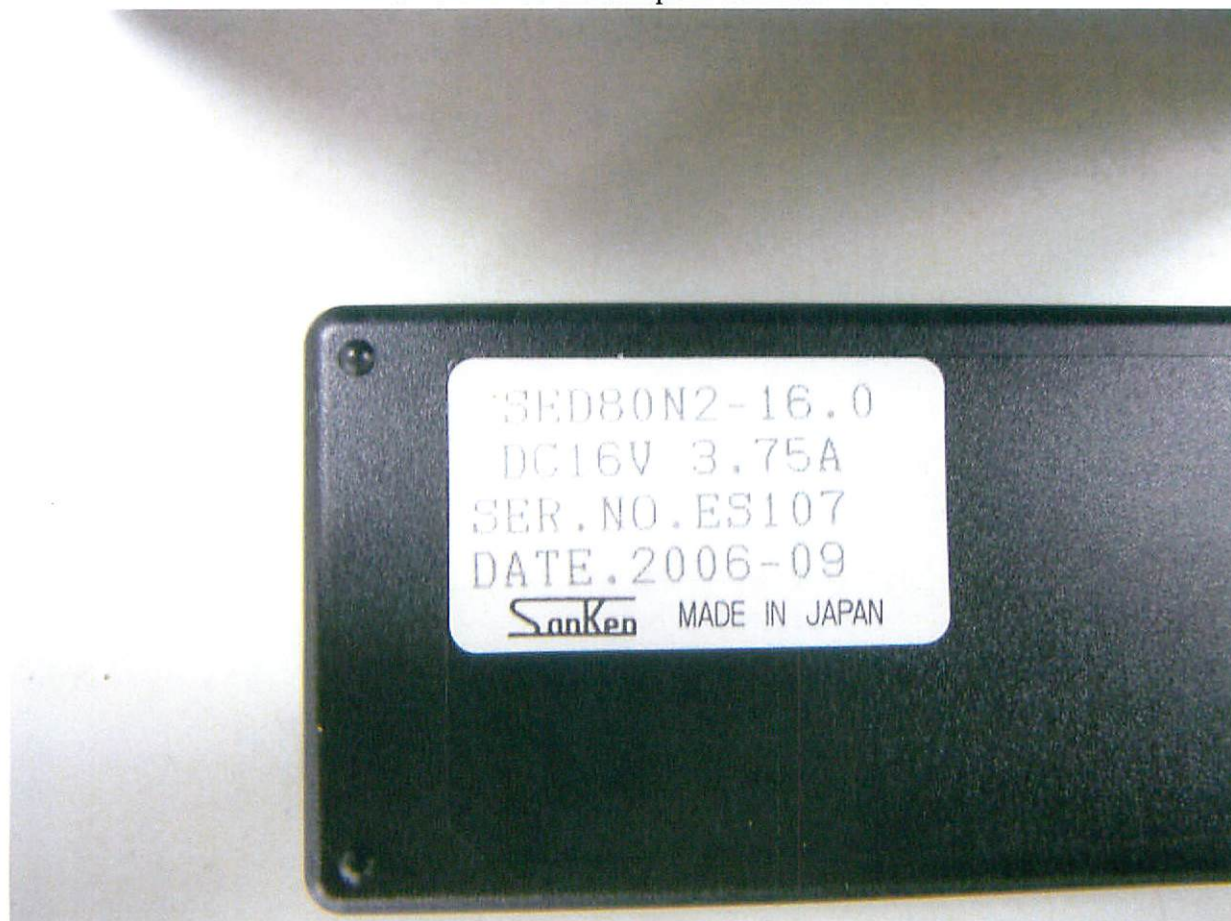


Photo-3.4 Label: AC adapter: SEC80N2-16.0



Photo-3.5 Label: AC adapter: PXW1637N



Photo-4.1 Internal view (First edition)

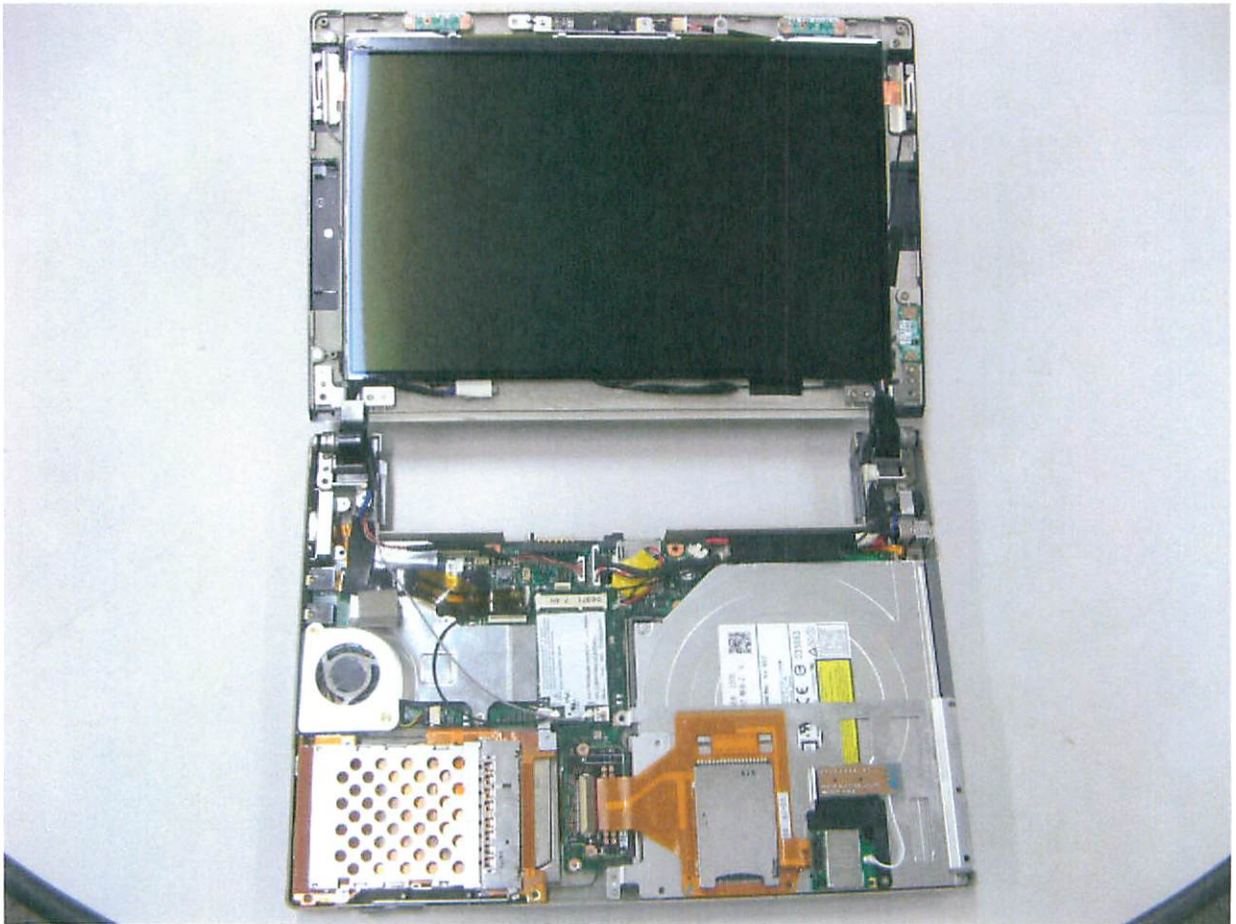


Photo-4.2 Internal view (Second edition)

