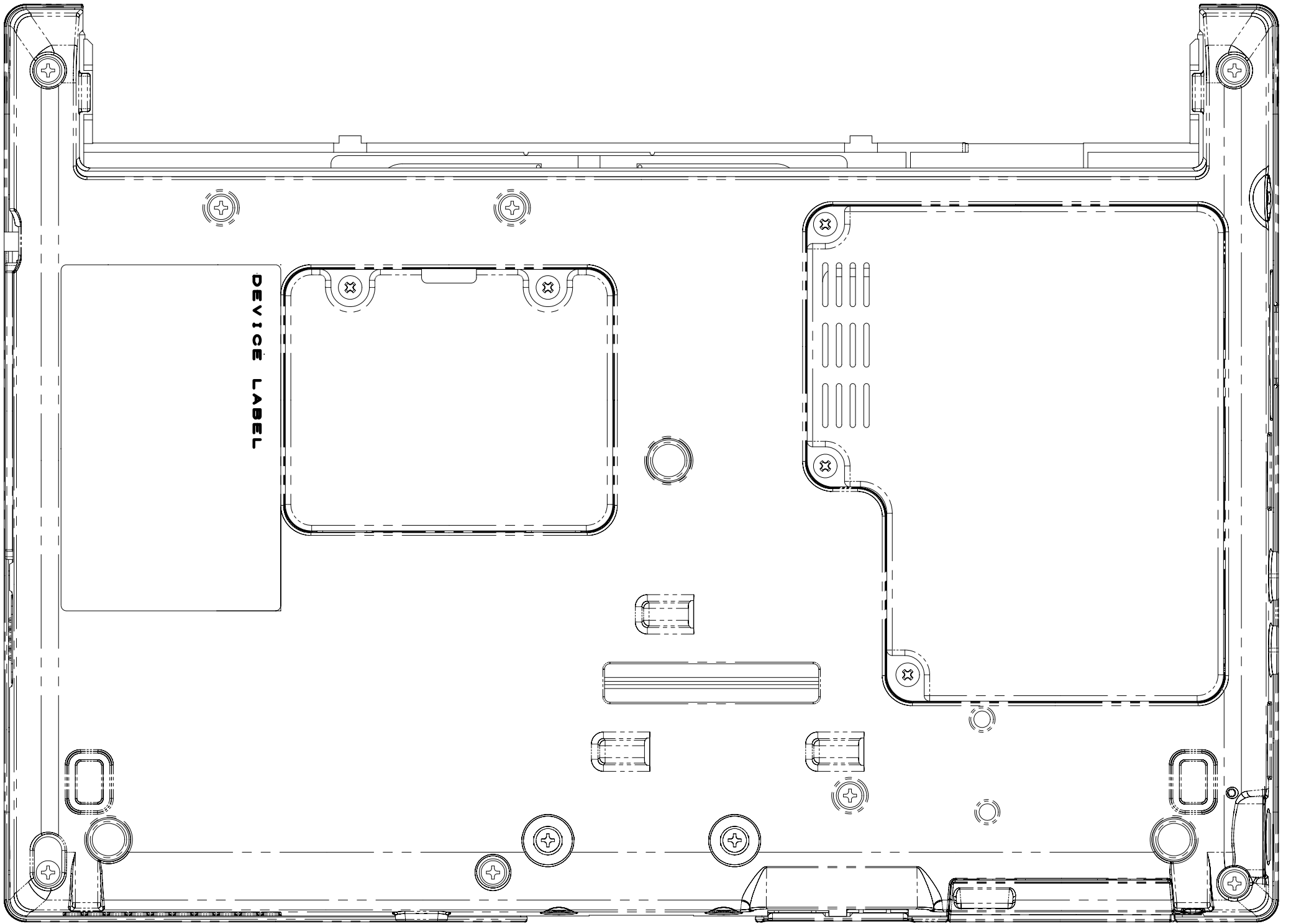


EMC Technologies Report Number: M060758_Cert_EYTF3CSFT_WLAN

APPENDIX H

FCC LABELLING DETAILS





L I F E B O O K

LifeBook P Series

Model:P1610

Product No:FPC*****

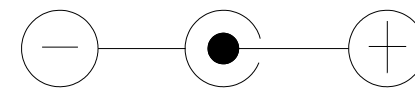
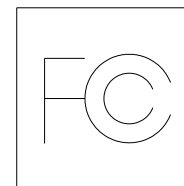
Part No:CP*****

Reg No:P1610

Fujitsu Computer Systems Corporation

Sunnyvale, CA

FUJITSU



DC16V = 2.5A

This device meets the requirements of 47 CFR Part 68.

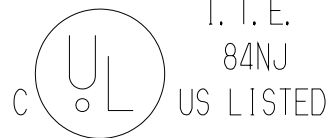
FCC Reg No: US:AGSMD01BDELPHI

REN=0.1B

USOC Jacks=RJ11C

FCC ID:EJE-WB0040

IC:337J-WB0040



Contains Lithium Battery. Must be recycled or disposed of properly.

CAUTION: Risk of Explosion if Battery is replaced by an Incorrect Type.

Dispose of Used Batteries According to the Instructions.

U. S. Patent 5,187,645

The Windows logo is a registered trademark of Microsoft Corporation in the United States and/or other countries.

This device complies with Part 15 of the FCC Rules. Operation is subject to the following two conditions.

(1) This device may not cause harmful interference, and (2) this device must accept any interference received, including interference that may cause undesired operation.

This digital apparatus does not exceed the Class B limits for radio noise emissions from digital apparatus set out in the Radio Interference Regulations of the Canadian Department of Communications.

MADE IN JAPAN

S

