

**EMC Technologies Report Number: M050533\_Cert\_BT\_WM3B2915ABG\_11abg**

## **APPENDIX H – FCC Labelling**



**LIFEBOOK**

LifeBook C Series

Model: C1320

Product\_No: FPC\*\*\*\*\*

Part\_No: CP\*\*\*\*\*

Reg No: C1320

Fujitsu Computer Systems Corporation

Sunnyvale, CA

MADE IN JAPAN



DC19V  $\Rightarrow$  4.22A

**FUJITSU**

FC Tested To Comply  
With FCC Standards  
FOR HOME OR OFFICE USE

**CE0523!**

Contains Lithium Battery. Must be recycled or disposed of properly.

The Windows logo is a registered trademark of Microsoft Corporation  
in the United States and/or other countries.

U.S. Patent Nos. 4,631,603; 4,577,216; 4,819,098;  
4,907,093; 5,315,448; and 6,516,132.

This device complies with Part 15 of the FCC Rules. Operation is subject to the following two conditions.

(1) This device may not cause harmful interference, and (2) this device must accept any interference  
received, including interference that may cause undesired operation.

This digital apparatus does not exceed the Class B limits for radio noise emissions from digital apparatus  
set out in the Radio Interference Regulations of the Canadian Department of Communications.

This device meets the requirements  
of 47 CFR Part 68.

FCC Reg No: US:AGSMD01BATHENS

REN=0.1B

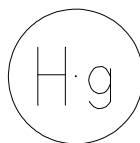
USOC Jacks=RJ11C

These approvals apply to the FJ3B2915ABG

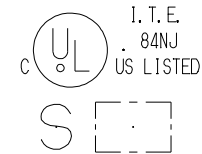
wireless LAN card in this PC.

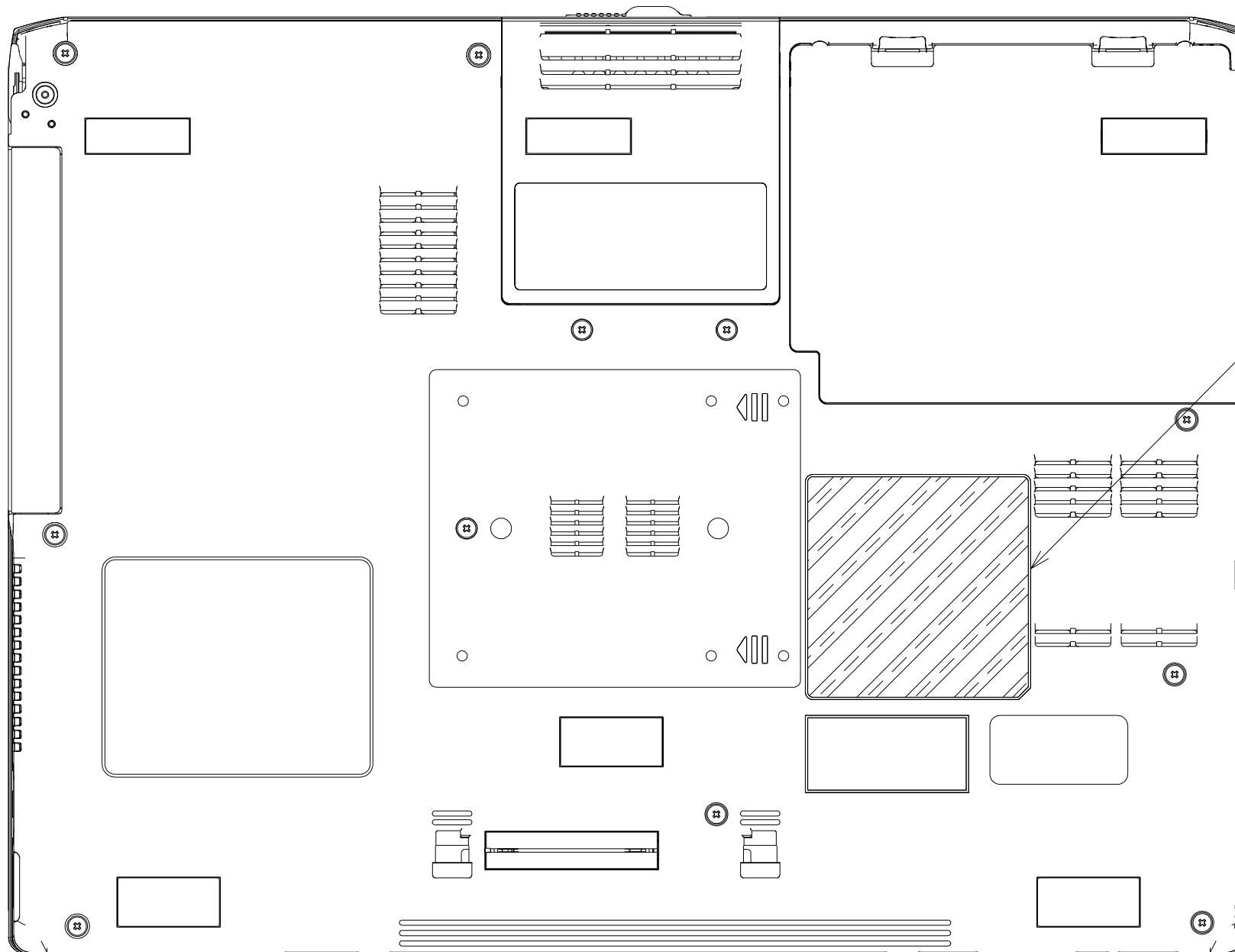
FCC ID: EJE-WB0030

IC: 337J-WB0030



LAMP CONTAINS MERCURY,  
DISPOSE PROPERLY





LABEL