

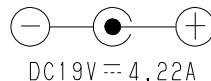
**EMC Technologies Report Number: M040905\_Cert\_Emilia2\_Cal2\_11abg\_NII\_BT**

## **APPENDIX G – FCC Labelling**



**L I F E B O O K**

LifeBook E Series  
Product No:FPC07114AL  
Part No:CP196746  
Reg No:E8010



**FUJITSU**

Fujitsu Computer Systems Corporation  
Sunnyvale, CA  
MADE IN JAPAN

FCC Tested To Comply  
With FCC Standards  
FOR HOME OR OFFICE USE

**CE0523!**

LAMP CONTAINS MERCURY,  
DISPOSE PROPERLY

Apparatus Claims of U.S. Patent Nos. 4,631,603; 4,577,216;  
4,819,098 and 4,907,093 licensed for limited viewing uses only.  
Contains Lithium Battery. Must be recycled or disposed of properly.  
The Windows logo is a registered trademark of Microsoft Corporation  
in the United States and/or other countries.

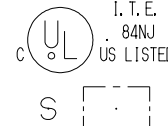
This device complies with Part 15 of the FCC Rules. Operation is subject to the following two conditions.

(1) This device may not cause harmful interference, and (2) this device must accept any interference  
received, including interference that may cause undesired operation.

This digital apparatus does not exceed the Class B limits for radio noise emissions from digital apparatus  
set out in the Radio Interference Regulations of the Canadian Department of Communications.

Complies With FCC Part 68 Rules.  
FCC Reg No:US:EJECN00B8687  
REN=0.0B  
USOC Jacks=RJ11C

FCC ID:EJE-WB0014  
IC:337J-WB0014



COA LABEL  
CA40701-Z050  
(WinXP Home)  
CA40701-Z056

DEVICE LABEL

12mm  
(パームレスト最内のラインから)  
(From the line of a palm rest  
which is an inner side most.)

製品名 LABEL  
表3参照

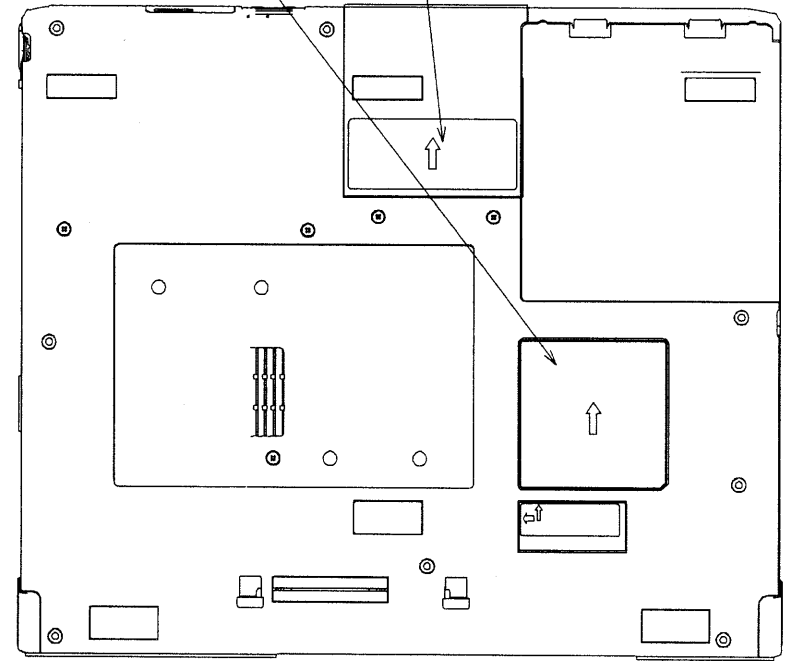
LABEL (INTEL)

CP173287-01 (Pentium-M)  
CP173286-01 (Centrino)  
CP196523-01 (Celeron-M)  
CTO選択による貼り付け。  
It depends and sticks on CTO  
selection and is a division.  
(FCSモデルは貼り付け不要)  
(A FCS model is attachment  
needlessness.)

LABEL, Atheros or ATI  
CP176148-01 (Atheros)  
未定 (ATI)  
CTO選択による貼り付け。  
It depends and sticks on CTO  
selection and is a division.

パームレスト最内の  
ラインに合わせる  
It unites with the line of a palm rest  
which is an inner side most.

WIN XP LABEL  
CP127872-01



日付 原図管理元

版	年月日	設計	承認	変更内容
備	Emilia Overseas models Mass-Production For FCS/FKL/FPCA			名称
考	SECTION	1322	NRN	F0204Z01393
年月日	設計	調査	承認	提出先
富士通株式会社				D1CP196745-01
				ページ 015/