

To: Federal Communications Commission  
7435 Oakland Mills Road  
Colombia MD 21046

**Statement of GSM, W-CDMA, Function Disable**

Product: Fujitsu F905i Cellular Phone  
Model No.: F905i  
FCC ID: EJE-FOMA-F905I

**1. GSM900, DCS1800, W-CDMA Band I and IX**

The above device (cellular phone) has capability of GSM900, DCS1800, W-CDMA Band I and IX. These functions cannot be activated by the user in case the cellular phone is used or switched on in the United States. These functions can also not be activated by the user in case the cellular phone is outside of the service area of a cellular phone network while switched on. In both cases, these functions are also not activated automatically.

When the cellular phone is inside the service area of a cellular phone network, it will search all available cellular networks. These functions will not switch on automatically unless cellular phone detects networks having GSM900, DCS1800, W-CDMA Band I and IX. Therefore these functions are never activated in the United States where there is no commercial network for those services. While searching for the network the cellular phone does not transmit any signal.

Also the user access to all functions related to GSM900, DCS1800, W-CDMA Band I and IX will be disabled where it cannot detect networks having those services and this prevents the user from manually switching on these functions.

**2. W-CDMA FDD-V**

The above device has RF circuit for W-CDMA Band V.

However, W-CDMA Band V is completely deactivated at any time and at any place.

When a cellular phone network sends signal requesting UE (User Equipment) capability information on W-CDMA Band V, this device does not response to it. Therefore it cannot attach to any W-CDMA Band V cellular phone network.

This function cannot be activated by the user or automatically at any time and at any location.

In case you have any question, please contact us,

Name and surname of applicant (or authorized representative):

Date: September 26, 2007

Phone / Fax: +81-44-754-3746

E-mail: yoshihiko.taki@jp.fujitsu.com

Signature:

 Sep. 26th 2007

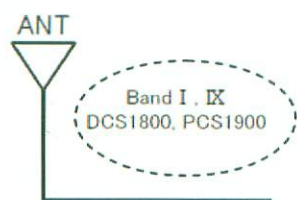
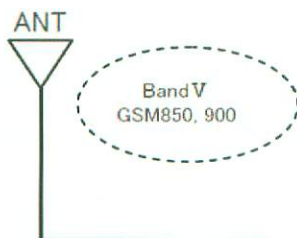
To: Federal Communications Commission  
7435 Oakland Mills Road  
Colombia MD 21046

### Supplemental Explanation on the Block Diagram

Product: Fujitsu F905i Cellular Phone  
Model No.: F905i  
FCC ID: EJE-FOMA-F905I

This document was prepared to prevent misinterpretation on the block diagram and the function that above device possess.

Upper left area of the block diagram has below expressions (circled) regarding its antenna systems. These expressions are only to explain the coverage of each antenna and it does not mean that the above product supports all frequencies or technologies indicated here. For example, above product does not have function of GSM850.



Name and surname of applicant (or authorized representative):

Date: September 26, 2007

Phone / Fax: +81-44-754-3746

E-mail: yoshihiko.taki@jp.fujitsu.com

Signature:

 Sep 26th 2007