

hp

REF 97.0 dB $\mu$ V

AT 10 dB

MKR 22.50 MHz

-62.18 dB

PEAK

LOG

10

dB/

VA VB

SC FC

CORR

Blue: With modulation

Red: Without modulation

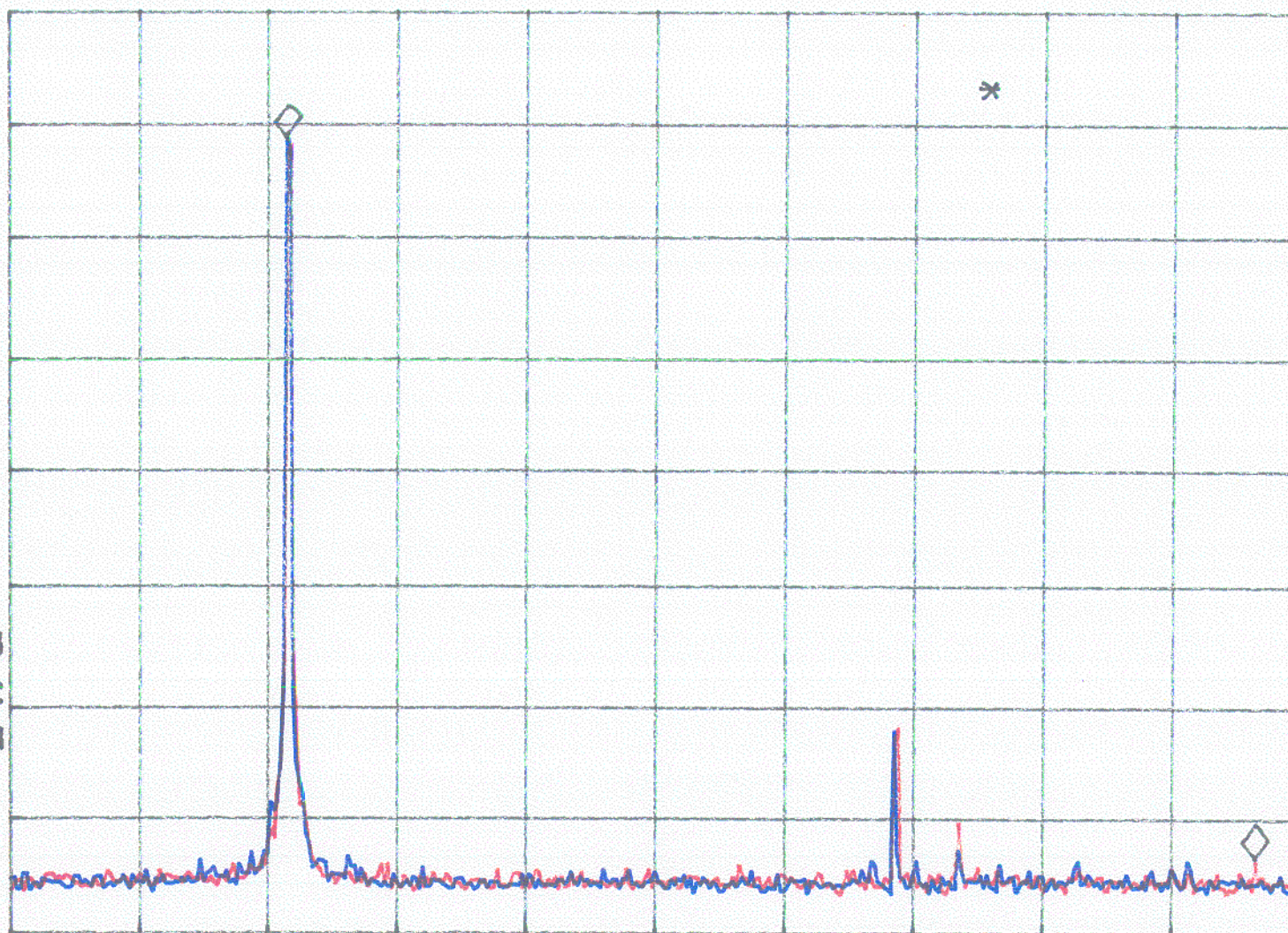
START 900.00 MHz

#RES BW 10 kHz

#VBW 10 kHz

STOP 930.00 MHz

SWP 900 msec



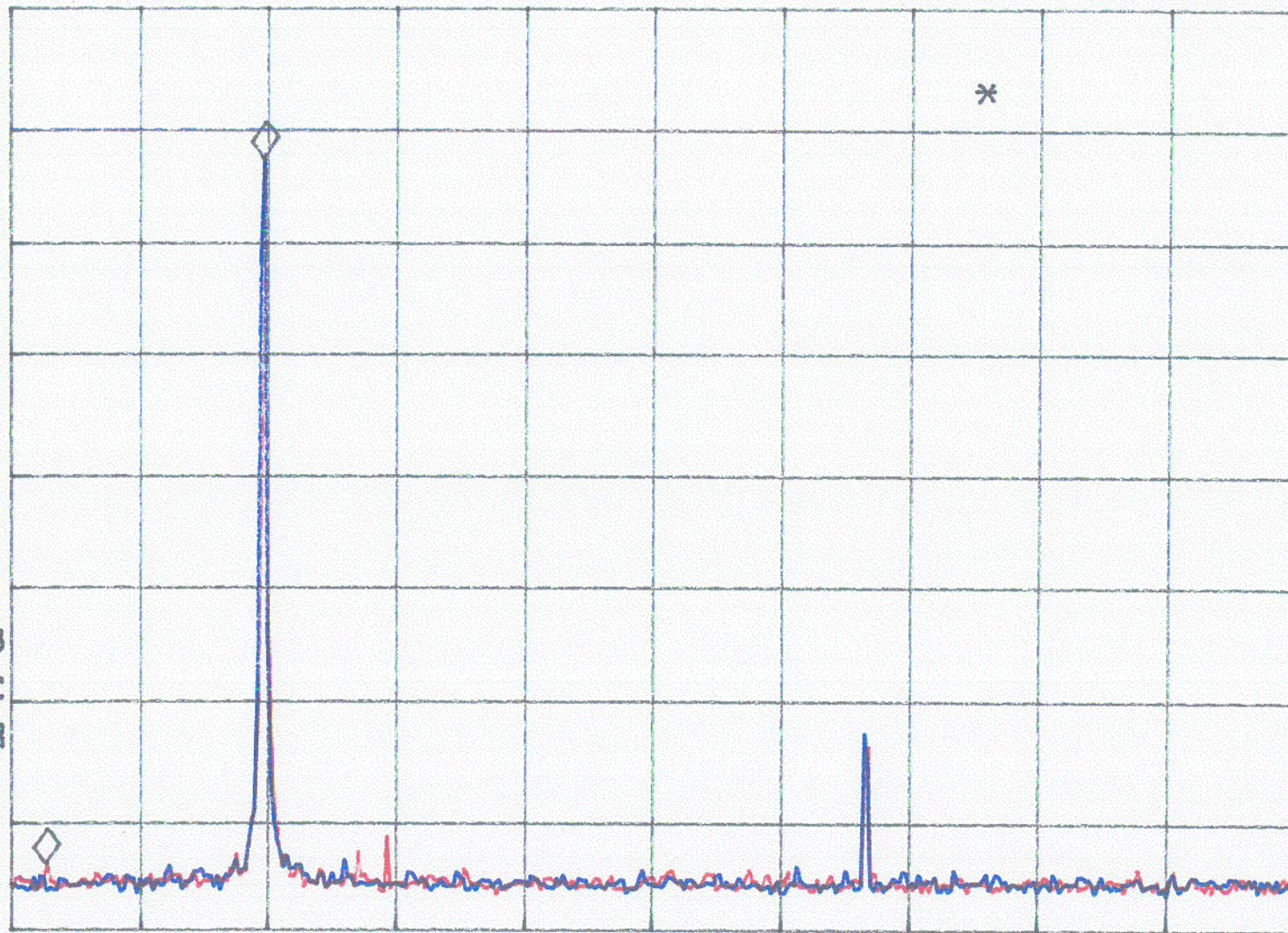


REF 97.0 dB $\mu$ V AT 10 dB MKR -5.10 MHz  
-61.32 dB

PEAK  
LOG  
10  
dB/

Blue: With modulation  
Red: Without modulation

VA VB  
SC FC  
CORR



START 900.00 MHz  
#RES BW 10 kHz

#VBW 10 kHz

STOP 930.00 MHz  
SWP 900 msec