

Channel A

10

MKR -26.67 MHz

REF 87.0 dBμV

AT 10 dB

-60.66 dB

PEAK

LOG

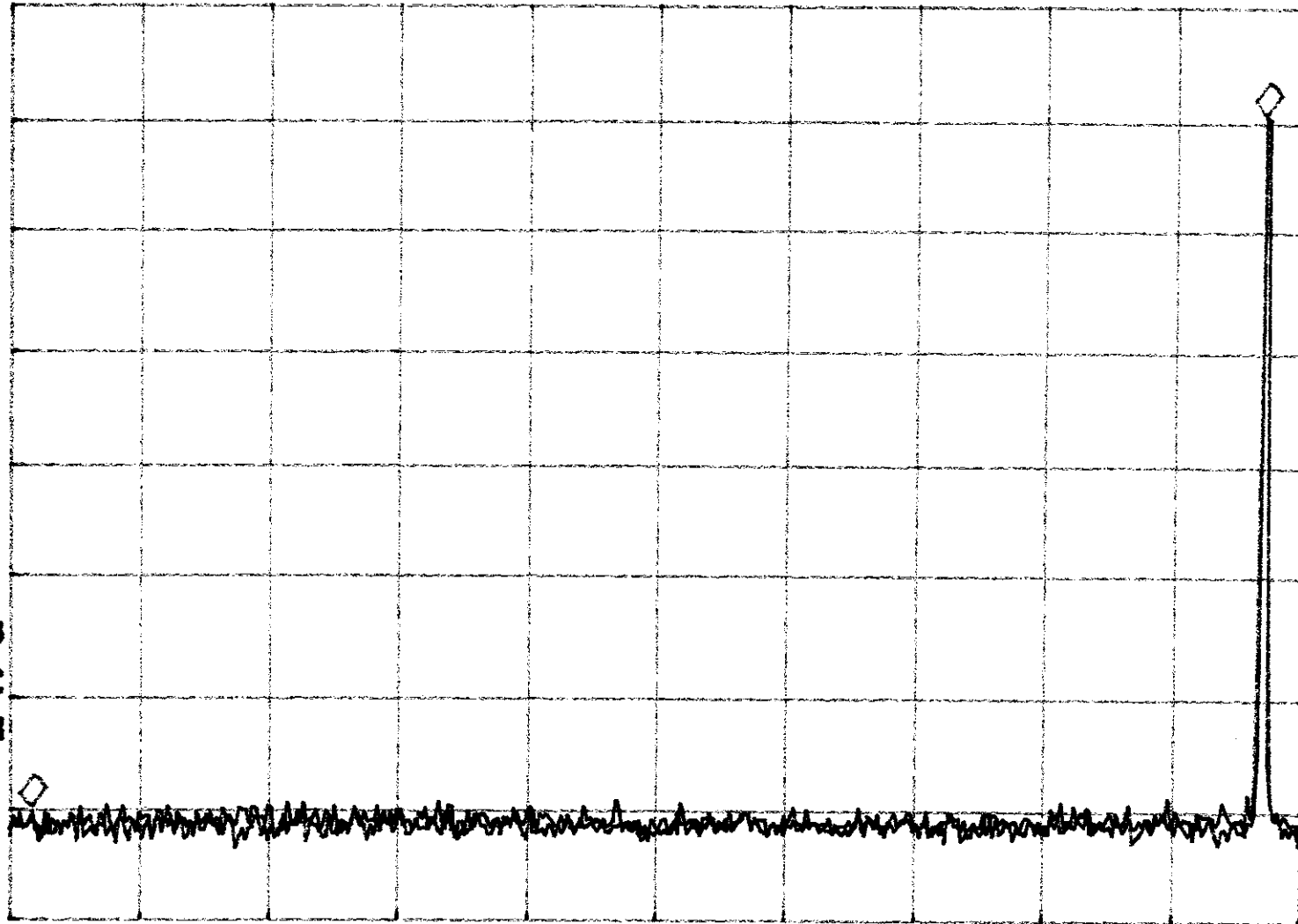
10

dB/

VA VB

SC FC

CORR



START 900.00 MHz

STOP 928.00 MHz

#RES BW 10 KHz

#VBW 3 MHz

SWP 840 msec

Channel B

77

REF 87.0 dB μ V

AT 10 dB

MKR 1.223 MHz

-59.72 dB

PEAK

LOG

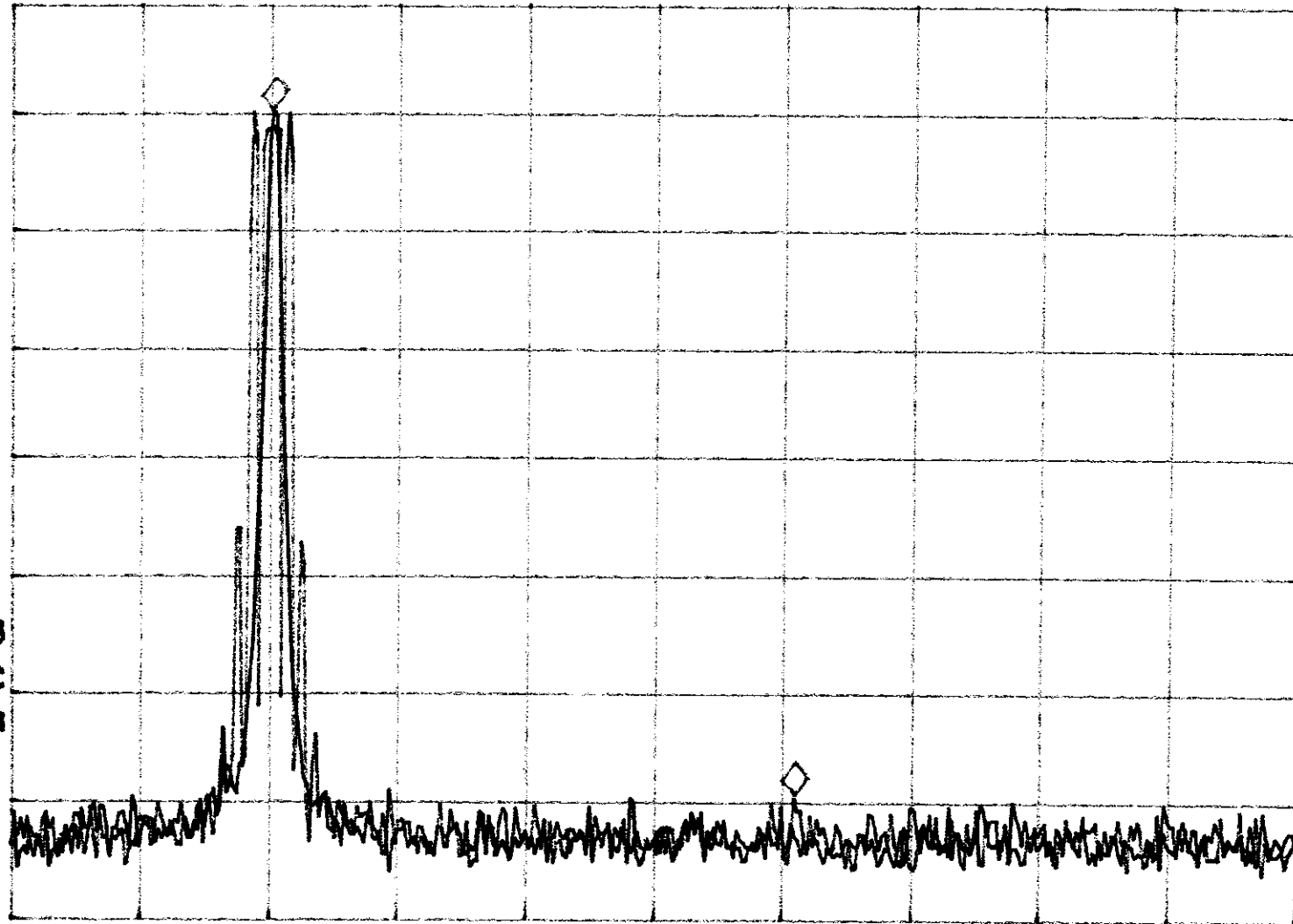
10

dB/

VA VB

SC FC

CORR



START 927.000 MHz

#RES BW 10 KHz

STOP 930.000 MHz

SWP 90.0 msec

#VBW 3 MHz