

hp

MKR -623 KHz

REF 97.0 dB $\mu$ V

AT 10 dB

-60.90 dB

PEAK

LOG

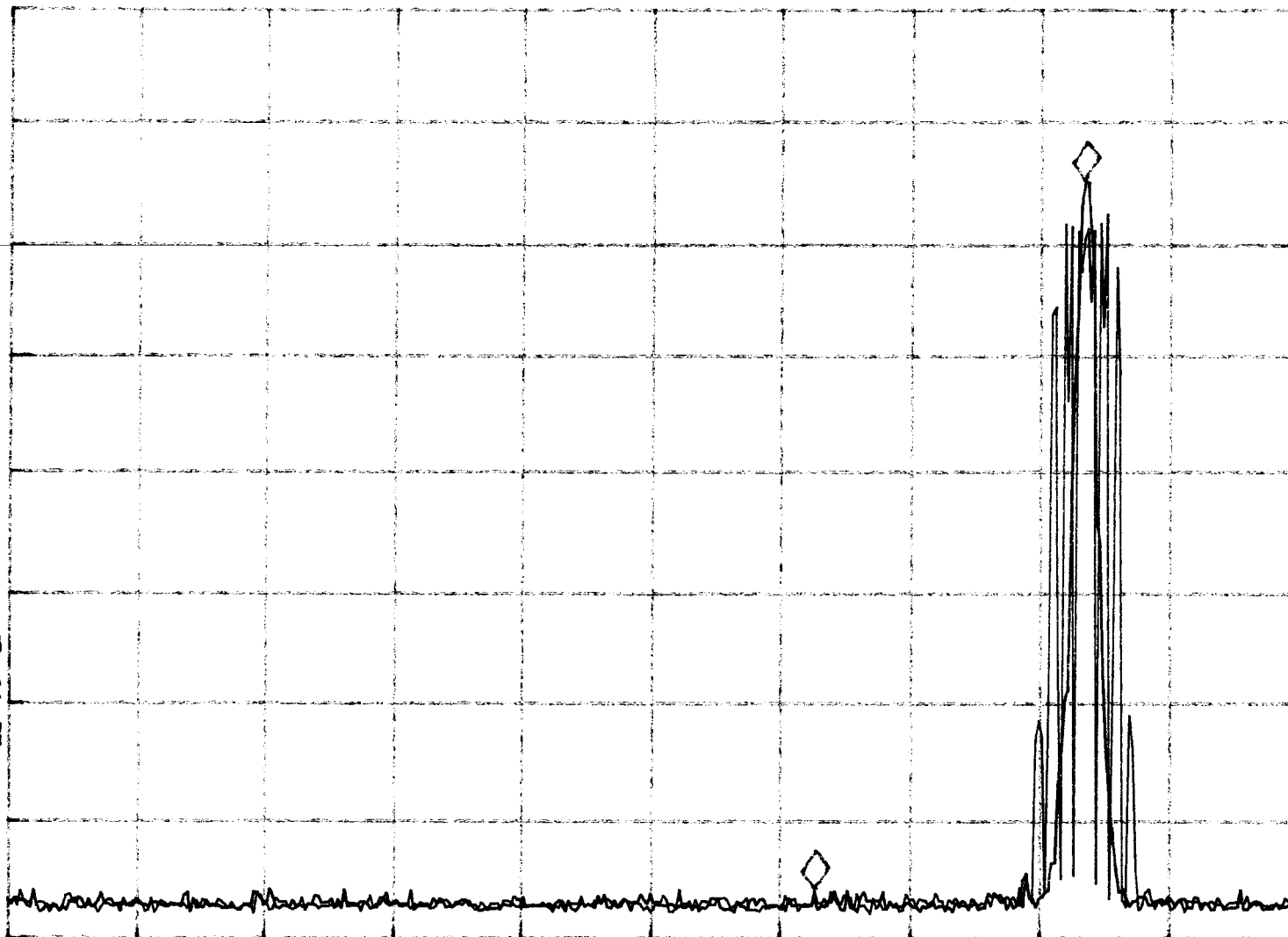
10

dB/

VA VB

SC FC

CORR



START 900.000 MHz

STOP 903.000 MHz

#RES BW 10 KHz

#VBW 300 KHz

SWP 90.0 msec

hp

MKR 25.16 MHz

REF 97.0 dB $\mu$ V

AT 10 dB

-59.57 dB

PEAK

LOG

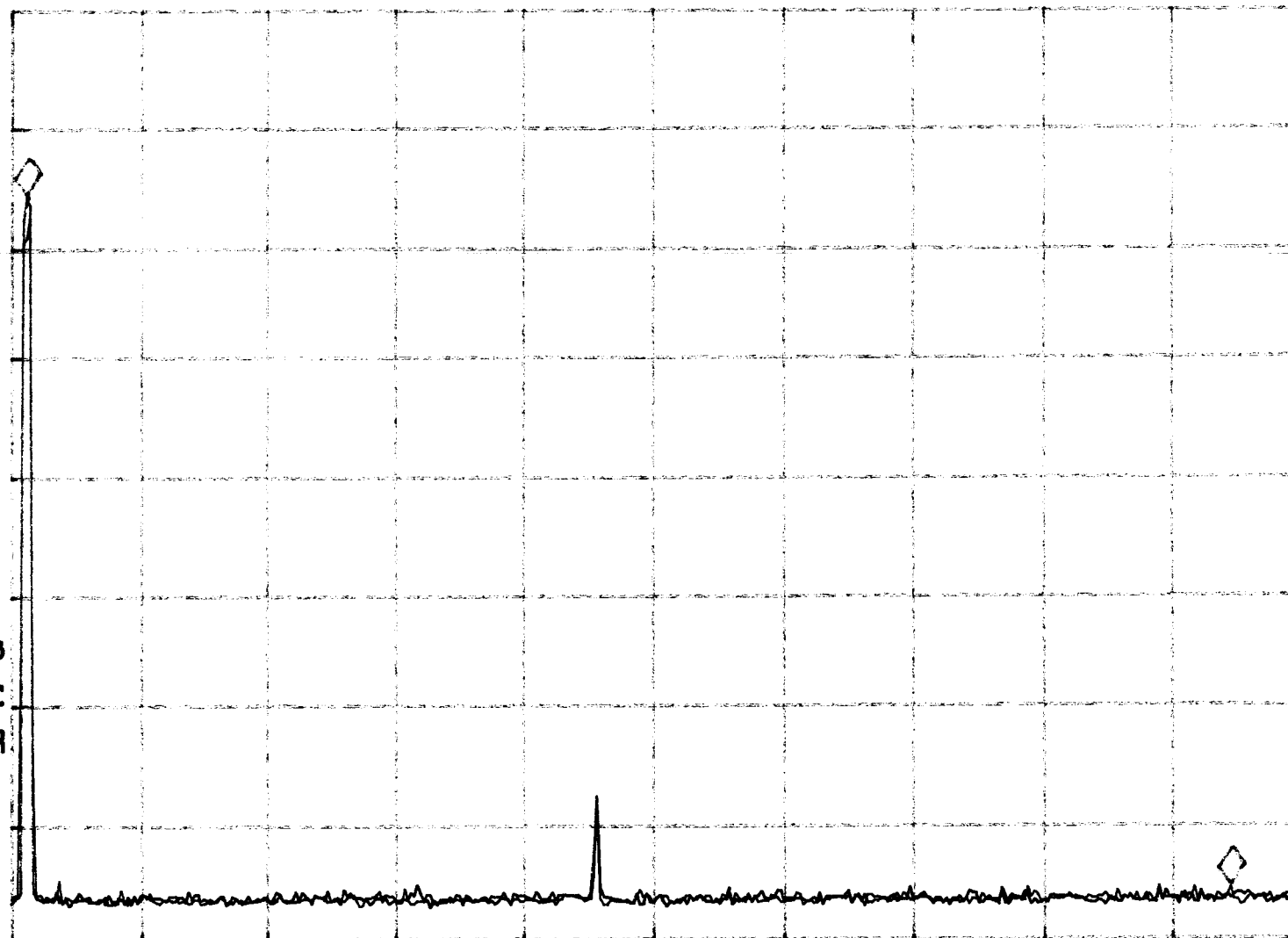
10

dB/

VA VB

SC FC

CORR



START 903.00 MHz

STOP 930.00 MHz

#RES BW 10 KHz

#VBW 300 KHz

SWP 810 msec