



RF EXPOSURE LAB, LLC

2867 Progress Place, Suite 4D • Escondido, CA 92029 • U.S.A.

TEL (760) 737-3131 • FAX (760) 737-9131

<http://www.rfexposurelab.com>

CERTIFICATE OF COMPLIANCE SAR EVALUATION

Medical Data Electronics
12723 Wentworth St.
Arleta, CA 91331

Dates of Test: November 1, 2004
Test Report Number: SAR.20041101

FCC ID:	EHC20701
Model(s):	20701
Serial No.:	Prototype
Equipment Type:	Wireless Medical Telemetry Service
Classification:	Certification
TX Frequency Range:	608 - 614 MHz
Maximum RF Output:	8.0 dB
Signal Modulation:	Frequency
Antenna Type (Length):	Internal
FCC Rule Parts:	Part 95H

This wireless mobile and/or portable device has been shown to be compliant for localized specific absorption rate (SAR) for uncontrolled environment/general exposure limits specified in ANSI/IEEE Std. C95.1-1992 and had been tested in accordance with the measurement procedures specified in IEEE 1528-2003 and OET Bulletin 65 Supp. C (See test report).

I attest to the accuracy of the data. All measurements were performed by myself or were made under my supervision and are correct to the best of my knowledge and belief. I assume full responsibility for the completeness of these measurements and vouch for the qualifications of all persons taking them.

RF Exposure Lab, LLC certifies that no party to this application has been denied FCC benefits pursuant to Section 5301 of the Anti-Drug Abuse Act of 1988, 21 U.S.C. 853(a).

Jay M. Moulton
Vice President



Table of Contents

1. Introduction	3
SAR Definition [5]	3
2. SAR Measurement Setup	4
Robotic System.....	4
System Hardware	4
System Description.....	4
E-Field Probe ALS-E-020	5
3. Robot Specifications	7
4. Probe and Dipole Calibration	8
5. Phantom & Simulating Tissue Specifications	9
SAM Phantom	9
Brain & Muscle Simulating Mixture Characterization	9
Device Holder	9
6. Body Worn Configurations	10
7. ANSI/IEEE C95.1 – 1992 RF Exposure Limits [2]	11
Uncontrolled Environment	11
Controlled Environment	11
8. Measurement Uncertainty	12
9. System Validation	13
Tissue Verification	13
Test System Verification	13
10. SAR Test Data Summary	14
See Measurement Result Data Pages.....	14
Procedures Used To Establish Test Signal	14
Device Test Condition.....	14
SAR Data Summary – 835 MHz Muscle	15
11. Test Equipment List.....	16
12. Conclusion.....	17
13. References	18
Appendix A – System Validation Plots and Data	19
Appendix B – SAR Test Data Plots	23
Appendix C – SAR Test Setup Photos	51
Appendix D – Probe Calibration Data Sheets	55
Appendix E – Dipole Calibration Data Sheets	56
Appendix F – Phantom Calibration Data Sheets	57

1. Introduction

This measurement report shows compliance of the Medical Data Electronics Model 20701 FCC ID: EHC20701 with FCC Part 2, 1093, ET Docket 93-62 Rules for mobile and portable devices. The FCC has adopted the guidelines for evaluating the environmental effects of radio frequency radiation in ET Docket 93-62 on August 6, 1996 to protect the public and workers from the potential hazards of RF emissions due to FCC regulated portable devices. [1]

The test procedures, as described in ANSI C95.1 – 1992 Standard for Safety Levels with Respect to Human Exposure to Radio Frequency Electromagnetic Fields, 3 kHz to 300 GHz [2], ANSI C95.3 – 1992 Recommended Practice for the Measurement of Potentially Hazardous Electromagnetic Fields [3], FCC OET Bulletin 65 Supp. C – 2001 [4], and IEEE Std.1528 – 2003 Recommended Practice [5] were employed.

SAR Definition [5]

Specific Absorption Rate is defined as the time derivative (rate) of the incremental energy (dW) absorbed by (dissipated in) an incremental mass (dm) contained in a volume element (dV) of a given density (ρ).

$$SAR = \frac{d}{dt} \left(\frac{dW}{dm} \right) = \frac{d}{dt} \left(\frac{dW}{\rho dV} \right)$$

SAR is expressed in units of watts per kilogram (W/kg). SAR can be related to the electric field at a point by

$$SAR = \frac{\sigma |E|^2}{\rho}$$

where:

σ = conductivity of the tissue (S/m)

ρ = mass density of the tissue (kg/m³)

E = rms electric field strength (V/m)

2. SAR Measurement Setup

Robotic System

The measurements are conducted utilizing the ALSAS-10-U automated dosimetric assessment system. The ALSAS-10-U is designed and manufactured by Aprel Laboratories in Nepean, Ontario, Canada. The system utilizes a Robcomm 3 robot manufactured by ThermoCRS located in Michigan USA.

System Hardware

The system consists of a six axis articulated arm, controller for precise probe positioning (0.05 mm repeatability), a power supply, a teach pendant for teaching area scans, near field probe, an IBM Pentium 4™ 2.66 GHz PC with Windows XP Pro™, and custom software developed to enable communications between the robot controller software and the host operating system.

An amplifier is located on the articulated arm, which is isolated from the custom designed end effector and robot arm. The end effector provides the mechanical touch detection functionality and probe connection interface. The amplifier is functionally validated within the manufacturer's site and calibrated at NCL Calibration Laboratories. A Data Acquisition Card (DAC) is used to collect the signal as detected by the isotropic e-field probe. The DAC manufacturer calibrates the DAC to NIST standards. A formal validation is executed using all mechanical and electronic components to prove conformity of the measurement platform as a whole.

System Description

The ALSAS-10-U has been designed to measure devices within the compliance environment to meet all recognized standards. The system also conforms to standards, which are currently being developed by the scientific and manufacturing community.

The course scan resolution is defined by the operator and reflects the requirements of the standard to which the device is being tested. Precise measurements are made within the predefined course scan area and the values are logged.

The user predefines the sample rate for which the measurements are made so as to ensure that the full duty-cycle of a pulse modulation device is covered during the sample. The following algorithm is an example of the function used by the system for linearization of the output for the probe.

$$V_i = U_i + U_i^2 \bullet \frac{cf}{dcp_i}$$



The April E-Field probe is evaluated to establish the diode compression point.

A complex algorithm is then used to calculate the values within the measured points down to a resolution of 1mm. The data from this process is then used to provide the co-ordinates from which the cube scan is created for the determination of the 1 g and 10 g averages.

Cube scan averaging consists of a number of complex algorithms, which are used to calculate the one, and ten gram averages. The basis for the cube scan process is centered on the location where the maximum measured SAR value was found. When a secondary peak value is found which is within 60% of the initial peak value, the system will report this back to the operator who can then assess the need for further analysis of both the peak values prior to the one and ten-gram cube scan averaging process. The algorithm consists of 3D cubic Spline, and Lagrange extrapolation to the surface, which form the matrix for calculating the measurement output for the one and ten gram average values. The resolution for the physical scan integral is user defined with a final calculated resolution down to 1mm.

In-depth analysis for the differential of the physical scanning resolution for the cube scan analysis has been carried out, to identify the optimum setting for the probe positioning steps, and this has been determined at 8mm increments on the X, & Y planes. The reduction of the physical step increment increased the time taken for analysis but did not provide a better uncertainty or return on measured values.

The final output from the system provides data for the area scan measurements, physical and splined (1mm resolution) cube scan with physical and calculated values (1mm resolution).

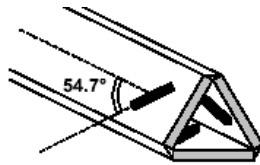
The overall uncertainty for the methodology and algorithms the ALSAS-10-U used during the SAR calculation was evaluated using the data from IEEE 1528 f3 algorithm:

$$f_3(x, y, z) = A \frac{a^2}{\frac{a^2}{4} + x'^2 + y'^2} \left(e^{\frac{-2z}{a}} + \frac{a^2}{2(a + 2z)^2} \right)$$

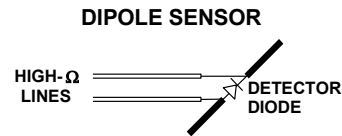
The probe used during the measurement process has been assessed to provide values for diode compression. These values are calculated during the probe calibration exercise and are used in the mathematical calculations for the assessment of SAR.

E-Field Probe ALS-E-020

The E-field probe used by RF Exposure Lab, LLC, has been fully calibrated and assessed for isotropic, and boundary effect. The probe utilizes a triangular sensor arrangement as detailed in the diagram below right.



Δ-BEAM



The SAR is assessed with the probe which moves at a default height of 5mm from the center of the diode, which is mounted to the sensor, to the phantom surface (Z height). The diagram above right shows how the center of the sensor is defined with the location of the diode placed at the center of the dipole. The 5mm default in the Z axis is the optimum height for assessing SAR where the boundary effect is at its least, with the probe located closest to the phantom surface (boundary).

3. Robot Specifications

Specifications

Positioner:	ThermoCRS, Robot Model: Robocomm 3
Repeatability:	0.05 mm
No. of axis:	6

Data Acquisition Card (DAC) System

Cell Controller

Processor:	Pentium 4™
Clock Speed:	2.66 GHz
Operating System:	Windows XP Pro™

Data Converter

Features:	Signal Amplifier, End Effector, DAC
Software:	ALSAS 10-U Software

E-Field Probe

Model:	ALS-E-020
Serial Number:	215
Construction:	Triangular Core Touch Detection System
Frequency:	10MHz to 6GHz

Phantom

Phantom:	Uniphantom, Right Phantom, Left Phantom
----------	---



4. Probe and Dipole Calibration

See Appendix D and E.

5. Phantom & Simulating Tissue Specifications

SAM Phantom



The Aprel system utilizes three separate phantoms. Each phantom for SAR assessment testing is a low loss dielectric shell, with shape and dimensions derived from the anthropomorphic data of the 90th percentile adult male head dimensions as tabulated by the US Army. The SAM phantom shell is bisected along the mid sagittal plane into right and left halves. The perimeter sidewalls of each phantom half is extended to allow filling with liquid to a depth of 15 cm that is sufficient to minimize reflections from the upper surface [5].

Brain & Muscle Simulating Mixture Characterization

The brain and muscle mixtures consist of a glycol based saline solution. The mixture is calibrated to obtain proper dielectric constant (permittivity) and conductivity of the desired tissue. The head tissue dielectric parameters recommended by the IEEE SCC-34/SC-2 have been incorporated in the following tables. Other head and body tissue parameters that have not been specified in P1528 are derived from the tissue dielectric parameters computed from the 4-Cole-Cole equations.

Table 5.1 Typical Composition of Ingredients for Tissue

Ingredients		Simulating Tissue	
		835 MHz Brain	835 MHz Muscle
Mixing Percentage			
Water		51.07	65.46
DGBE		0.00	0.00
Triton X-100		0.00	0.00
Sugar		47.31	34.31
Salt		1.15	0.62
Bacteriacide		0.24	0.10
HEC		0.23	0.00
Dielectric Constant	Target	41.50	55.20
Conductivity (S/m)	Target	0.90	0.97

Device Holder



In combination with the SAM phantom, the mounting device enables the rotation of the mounted transmitter in spherical coordinates whereby the rotation point is the ear opening. The devices can easily, accurately, and repeatably be positioned according to the FCC specifications. The device holder can be locked at different phantom locations (left head, right head, and uni-phantom).

6. Body Worn Configurations

Body-worn operating configurations are tested with the accessories attached to the device and positioned against a flat phantom in a normal use configuration. A device with a headset output is tested with a headset connected to the device. Body dielectric parameters are used.

Accessories for Body-worn operation configurations are divided into two categories: those that do not contain metallic components and those that do contain metallic components. When multiple accessories that do not contain metallic components are supplied with the device, the device is tested with only the accessory that dictates the closest spacing to the body. Then, when multiple accessories that contain metallic components are supplied with the device, the device is tested with each accessory that contains a unique metallic component. If multiple accessories share an identical metallic component (i.e. the same metallic belt-clip used with different holsters with no other metallic components) only the accessory that dictates the closest spacing to the body is tested.

Body-worn accessories may not always be supplied or available as options for some devices intended to be authorized for body-worn use. In this case, a test configuration where a separation distance between the back of the device and the flat phantom is used. All test position spacings are documented.

Transmitters that are designed to operate in front of a person's face, as in push-to-talk configurations, are tested for SAR compliance with the front of the device positioned to face the flat phantom. For devices that are carried next to the body such as a shoulder, waist or chest-worn transmitters, SAR compliance is tested with the accessory(ies), including headsets and microphones, attached to the device and positioned against a flat phantom in a normal use configuration.

In all cases SAR measurements are performed to investigate the worst-case positioning. Worst-case positioning is then documented and used to perform Body SAR testing.

In order for users to be aware of the body-worn operating requirements for meeting RF exposure compliance, operating instructions and cautions statements are included in the user's manual.

7. ANSI/IEEE C95.1 – 1992 RF Exposure Limits [2]

Uncontrolled Environment

Uncontrolled Environments are defined as locations where there is the exposure of individuals who have no knowledge or control of their exposure. The general population/uncontrolled exposure limits are applicable to situations in which the general public may be exposed or in which persons who are exposed as a consequence of their employment may not be made fully aware of the potential for exposure or cannot exercise control over their exposure. Members of the general public would come under this category when exposure is not employment-related; for example, in the case of a wireless transmitter that exposes persons in its vicinity.

Controlled Environment

Controlled Environments are defined as locations where there is exposure that may be incurred by persons who are aware of the potential for exposure, (i.e. as a result of employment or occupation). In general, occupational/controlled exposure limits are applicable to situations in which persons are exposed as a consequence of their employment, who have been made fully aware of the potential for exposure and can exercise control over their exposure. This exposure category is also applicable when the exposure is of a transient nature due to incidental passage through a location where the exposure levels may be higher than the general population/uncontrolled limits, but the exposed person is fully aware of the potential for exposure and can exercise control over his or her exposure by leaving the area or by some other appropriate means.

Table 8.1 Human Exposure Limits

	UNCONTROLLED ENVIRONMENT General Population (W/kg) or (mW/g)	CONTROLLED ENVIROMENT Professional Population (W/kg) or (mW/g)
SPATIAL PEAK SAR ¹ Brain	1.60	8.00
SPATIAL AVERAGE SAR ² Whole Body	0.08	0.40
SPATIAL PEAK SAR ³ Hands, Feet, Ankles, Wrists	4.00	20.00

¹ The Spatial Peak value of the SAR averaged over any 1 gram of tissue (defined as a tissue volume in the shape of a cube) and over the appropriate averaging time.

² The Spatial Average value of the SAR averaged over the whole body.

³ The Spatial Peak value of the SAR averaged over any 10 grams of tissue (defined as a tissue volume in the shape of a cube) and over the appropriate averaging time.

8. Measurement Uncertainty

See each data scan attached in Appendix B.

9. System Validation

Tissue Verification

Table 10.1 Measured Tissue Parameters

Date(s)	11/1/2004	835 MHz Muscle	
Liquid Temperature (°C)	20.0	Target	Measured
Dielectric Constant: ϵ		55.20	56.69
Conductivity: σ		0.970	0.96

See Appendix A for data printout.

Test System Verification

Prior to assessment, the system is verified to the $\pm 10\%$ of the specifications at 835 MHz by using the system kit(s). (Graphic Plots Attached).

Table 10.2 System Dipole Validation Target & Measured

System Validation Kit ALS-D-835-S-2 S/N: RFE-274	835 MHz Muscle	Targeted SAR _{1g} (W/kg) 9.5	Measure SAR _{1g} (W/kg) 9.55	Deviation (%) 0.53
--	-------------------	--	--	-----------------------

See Appendix A for data plots.

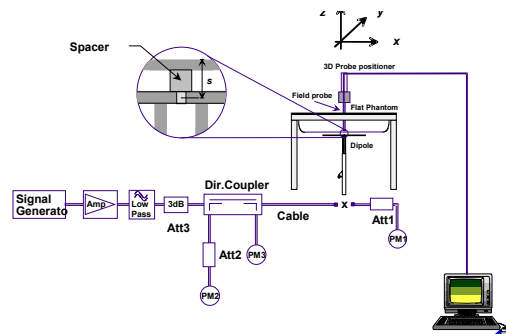


Figure 10.1 Dipole Validation Test Setup

10. SAR Test Data Summary

See Measurement Result Data Pages

See Appendix B for SAR Test Data Plots.
See Appendix C for SAR Test Setup Photos.

Procedures Used To Establish Test Signal

The device was placed into simulated transmit mode using the manufacturer's test codes. Such test signals offer a consistent means for testing SAR and are recommended for evaluating SAR. When test modes are not available or inappropriate for testing a device, the actual transmission is activated through a base station simulator or similar equipment. See data pages for actual procedure used in measurement.

Device Test Condition

The device is battery operated. Each SAR measurement was taken with a fully charged battery. In order to verify that the device was tested at full power, output power measurements were performed before and after each SAR measurement to confirm the output power. If a power deviation of more than 5% occurred, the test was repeated.

SAR Data Summary – 835 MHz Muscle

MEASUREMENT RESULTS								
EUT Position	Device Position	Frequency		Modulation	Begin / End Power			SAR (W/kg)
		MHz	Ch.		(dBm)		Battery	
Touch	Back	608	01A	FM	8.8	8.8	Standard	0.09
		611	42C	FM	6.6	6.6	Standard	0.12
		614	83E	FM	7.5	7.5	Standard	0.11
	Front	608	01A	FM	8.8	8.8	Standard	0.11
		611	42C	FM	6.6	6.6	Standard	0.12
		614	83E	FM	7.5	7.5	Standard	0.12
	Left Side	608	01A	FM	8.8	8.8	Standard	0.11
		611	42C	FM	6.6	6.6	Standard	0.11
		614	83E	FM	7.5	7.5	Standard	0.12
					Muscle 1.6 W/kg (mW/g) averaged over 1 gram			

1. Battery is fully charged for all tests.

Power Measured

☐ Conducted

☒ ERP

☐ EIRP

2. SAR Measurement

Phantom Configuration

☐ Left Head

☒ Uni-phantom

☐ Right Head

SAR Configuration

☐ Head

☒ Body

3. Test Signal Call Mode

☒ Test Code

☐ Base Station Simulator

4. Test Configuration

☐ With Holster

☐ Without Holster

☒ N/A



Jay M. Moulton
Vice President

11. Test Equipment List

Table 12.1 Equipment Specifications

Type	Calibration Due Date	Serial Number
ThermoCRS Robot	N/A	RAF0338198
ThermoCRS Controller	N/A	RCF0338224
ThermoCRS Teach Pendant (Joystick)	N/A	STP0334405
IBM Computer, 2.66 MHz P4	N/A	8189D8U KCPR08N
Aprel E-Field Probe ALS-E020	06/10/2005	215
Aprel Dummy Probe	N/A	023
Aprel Left Phantom	N/A	RFE-267
Aprel Right Phantom	N/A	RFE-268
Aprel UniPhantom	N/A	RFE-273
Aprel Validation Dipole ALS-D-835-S-2	02/20/2005	RFE-274
Aprel Validation Dipole ALS-D-1900-S-2	02/20/2005	RFE-277
Aprel Validation Dipole ALS-D-2450-S-2	02/20/2005	RFE-278
Aprel Validation Dipole ALS-D-900-S-2	02/20/2005	RFE-275
Agilent (HP) 437B Power Meter	12/18/2005	3125U08837
Agilent (HP) 8481B Power Sensor	05/26/2005	3318A05384
Agilent (HP) 8350B Signal Generator	3/10/2005	2749A10226
Agilent (HP) 83525A RF Plug-In	03/10/2005	2647A01172
Agilent (HP) 8753C Vector Network Analyzer	02/12/2005	3135A01724
Agilent (HP) 85047A S-Parameter Test Set	02/12/2005	2904A00595
Aprel Dielectric Probe Assembly	N/A	0011
Microwave Power Devices 510-10E Amplifier	3/09/2005	6063-001
Microwave Power Devices 1020-9E Amplifier	03/09/2005	5618-1
Hughes 8010H01-000 Amplifier	03/10/2005	169
Brain Equivalent Matter (835 MHz)	N/A	N/A
Brain Equivalent Matter (1900 MHz)	N/A	N/A
Brain Equivalent Matter (900 MHz)	N/A	N/A
Muscle Equivalent Matter (835 MHz)	N/A	N/A
Muscle Equivalent Matter (1900 MHz)	N/A	N/A
Muscle Equivalent Matter (900 MHz)	N/A	N/A
Muscle Equivalent Matter (2450 MHz)	N/A	N/A
Muscle Equivalent Matter (5200 MHz)	N/A	N/A

12. Conclusion

The SAR measurement indicates that the EUT complies with the RF radiation exposure limits of the FCC. These measurements are taken to simulate the RF effects exposure under worst-case conditions. Precise laboratory measures were taken to assure repeatability of the tests. The tested device complies with the requirements in respect to all parameters subject to the test. The test results and statements relate only to the item(s) tested.

Please note that the absorption and distribution of electromagnetic energy in the body is a very complex phenomena that depends on the mass, shape, and size of the body; the orientation of the body with respect to the field vectors; and, the electrical properties of both the body and the environment. Other variables that may play a substantial role in possible biological effects are those that characterize the environment (e.g. ambient temperature, air velocity, relative humidity, and body insulation) and those that characterize the individual (e.g. age, gender, activity level, debilitation, or disease). Because innumerable factors may interact to determine the specific biological outcome of an exposure to electromagnetic fields, any protection guide shall consider maximal amplification of biological effects as a result of field-body interactions, environmental conditions, and physiological variables. [3]

13. References

- [1] Federal Communications Commission, ET Docket 93-62, Guidelines for Evaluating the Environmental Effects of Radio Frequency Radiation, August 1996
- [2] ANSI/IEEE C95.1 – 1991, American National Standard Safety Levels with respect to Human Exposure to Radio Frequency Electromagnetic Fields, 300kHz to 100GHz, New York: IEEE, 1992.
- [3] ANSI/IEEE C95.3 – 1991, IEEE Recommended Practice for the Measurement of Potentially Hazardous Electromagnetic Fields – RF and Microwave, New York: IEEE, 1992.
- [4] Federal Communications Commission, OET Bulletin 65 (Edition 97-01), Supplement C (Edition 01-01), Evaluating Compliance with FCC Guidelines for Human Exposure to Radio Frequency Electromagnetic Fields, July 2001.
- [5] IEEE Standard 1528 – 2003, IEEE Recommended Practice for Determining the Peak-Spatial Average Specific Absorption Rate (SAR) in the Human Head from Wireless Communication Devices: Measurement Techniques, October 2003.

Appendix A – System Validation Plots and Data

```
*****
Test Result for UIM Dielectric Parameter
Mon 01/Nov/2004 08:58:53
Freq  Frequency(GHz)
FCC_eH      FCC Bulletin 65 Supplement C ( June 2001) Limits for Head Epsilon
FCC_sH      FCC Bulletin 65 Supplement C (June 2001) Limits for Head Sigma
FCC_eB      FCC Limits for Body Epsilon
FCC_sB      FCC Limits for Body Sigma
Test_e      Epsilon of UIM
Test_s      Sigma of UIM
*****
```

Freq	FCC_eB	FCC_sB	Test_e	Test_s
0.4350	56.85	0.94	62.26	0.59
0.5350	56.37	0.95	60.74	0.68
0.6350	55.98	0.95	59.65	0.76
0.7350	55.59	0.96	58.12	0.86
0.8350	55.20	0.97	56.69	0.96
0.9350	54.96	1.07	55.87	1.07
1.0350	54.78	1.11	55.09	1.18
1.1350	54.59	1.16	54.20	1.30
1.2350	54.40	1.20	53.32	1.41

SAR Test Report

Operator : Jay
Validation Date : 01-Nov-2004
Measurement Date : 01-Nov-2004
Starting Time : 01-Nov-2004 11:21:45 AM
End Time : 01-Nov-2004 11:38:55 AM
Scanning Time : 1030 secs

Product Data

Device Name : Validation
Serial No. : 835
Type : Dipole
Model : ALS-D-835-S-2
Frequency : 835.00 MHz
Max. Transmit Pwr : 1 W
Drift Time : 0 min(s)
Length : 161
Width : 3.6
Depth : 89.8
Antenna Type : Internal
Power Drift-Start : 7.91
Power Drift-Finish : 7.65
Power Drift : 0.26

Phantom Data

Name : APREL-Uni
Type : Uni-Phantom
Size : 280 x 280 x 200
Serial No. : System Default
Location : Center
Description : validation

Tissue Data

Type : Body
Serial No. : 123
Frequency : 835 MHz
Calibration Date : 01-Nov-2004
Temperature : 20 °C
Ambient Temp. : 20 °C
Humidity : 52 RH%
Epsilon : 56.69 F/m
Sigma : 0.96 S/m
Density : 1000 kg/cu. m

Probe Data

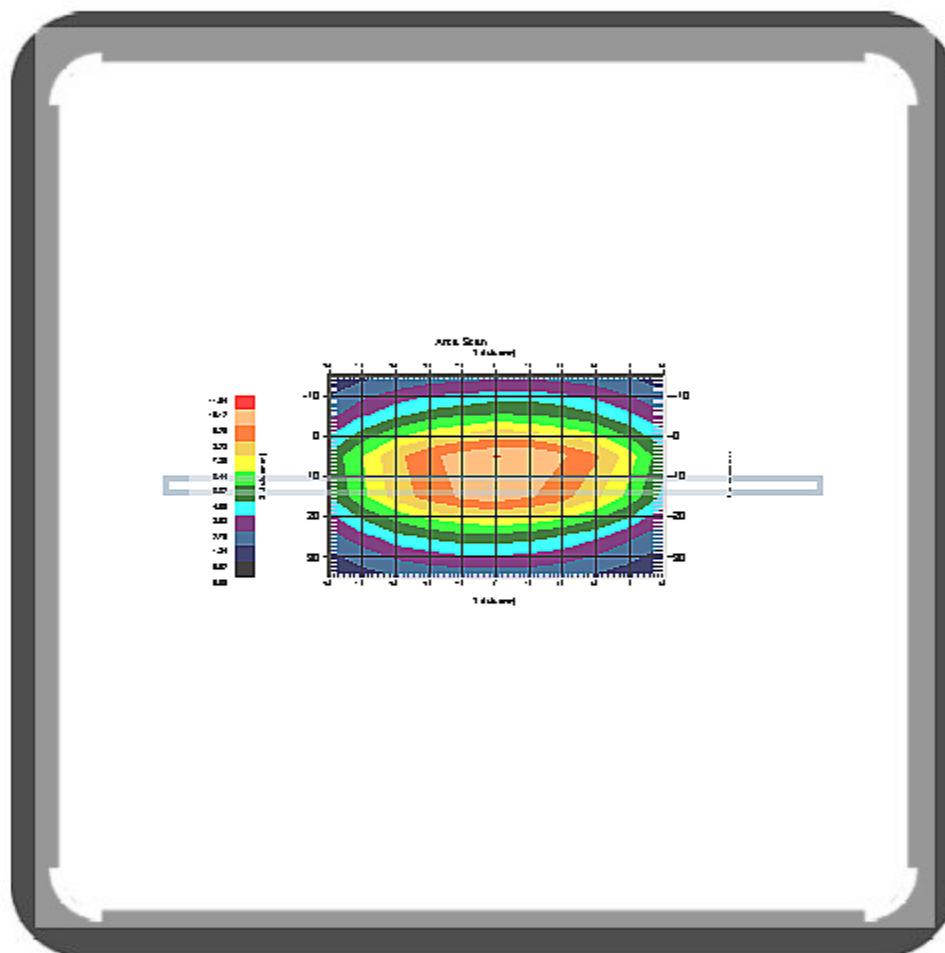
Name : RFEL 215
Model : E020
Type : E-Field Triangle
Serial No. : 215
Calibration Date : 29-Jul-2004
Frequency : 835 MHz
Duty Cycle Factor : 1
Conversion Factor : 5.9
Probe Sensitivity : 1.20 1.20 1.20 $\mu\text{V}/(\text{V}/\text{sq. m})$
Compression Point : 95
Offset : 1.56

Measurement Data

Crest Factor : 1
Scan Type : Complete
Set-up Date : 01-Nov-2004
Set-up Time : 8:11:19 AM

Other Data

DUT Position : Touch
Separation : 15
Channel : Mid - 835



1 gram SAR value : 9.55 W/kg
10 gram SAR value : 6.20 W/kg
Area Scan Peak SAR : 10.14
Zoom Scan Peak SAR : 15.80

Exposure Assessment Measurement Uncertainty

Source of Uncertainty	Tolerance Value	Probability Distribution	Divisor	c_i (1-g)	c_i (10-g)	Standard Uncertainty (1-g)	Standard Uncertainty (10-g)
Measurement System							
Probe Calibration	3.5	normal	1	1	1	3.5	3.5
Axial Isotropy	3.7	rectangular	•3	$(1-cp)^{1/2}$	$(1-cp)^{1/2}$	1.5	1.5
Hemispherical Isotropy	10.9	rectangular	•3	•cp	•cp	4.4	4.4
Boundary Effect	1.0	rectangular	•3	1	1	0.6	0.6
Linearity	4.7	rectangular	•3	1	1	2.7	2.7
Detection Limit	1.0	rectangular	•3	1	1	0.6	0.6
Readout Electronics	1.0	normal	1	1	1	1.0	1.0
Response Time	0.8	rectangular	•3	1	1	0.5	0.5
Integration Time	1.7	rectangular	•3	1	1	1.0	1.0
RF Ambient Condition	3.0	rectangular	•3	1	1	1.7	1.7
Probe Positioner Mech.	0.4	rectangular	•3	1	1	0.2	0.2
Restriction							
Probe Positioning with respect to Phantom Shell	2.9	rectangular	•3	1	1	1.7	1.7
Extrapolation and Integration	3.7	rectangular	•3	1	1	2.1	2.1
Test Sample Positioning	4.0	normal	1	1	1	4.0	4.0
Device Holder Uncertainty	2.0	normal	1	1	1	2.0	2.0
Drift of Output Power	0.7	rectangular	•3	1	1	0.0	0.0
Phantom and Setup							
Phantom Uncertainty(shape & thickness tolerance)	3.4	rectangular	•3	1	1	2.0	2.0
Liquid Conductivity(target)	5.0	rectangular	•3	0.7	0.5	2.0	1.4
Liquid Conductivity(meas.)	0.1	rectangular	•3	0.7	0.5	0.0	0.0
Liquid Permittivity(target)	2.0	rectangular	•3	0.6	0.5	0.7	0.6
Liquid Permittivity(meas.)	5.7	rectangular	•3	0.6	0.5	2.0	1.6
Combined Uncertainty		RSS				9.3	9.1
Combined Uncertainty (coverage factor=2)		Normal (k=2)				18.6	18.2

Appendix B – SAR Test Data Plots

SAR Test Report

Operator : Jay
Validation Date : 01-Nov-2004
Measurement Date : 01-Nov-2004
Starting Time : 01-Nov-2004 01:27:43 PM
End Time : 01-Nov-2004 01:54:18 PM
Scanning Time : 1595 secs

Product Data

Device Name : Medical Data Electronic
Serial No. : Prototype
Type : Other
Model : 20701
Frequency : 611.00 MHz
Max. Transmit Pwr : 0.0065 W
Drift Time : 0 min(s)
Length : 70
Width : 130
Depth : 20
Antenna Type : Internal
Power Drift-Start : 0.09
Power Drift-Finish : 0.08
Power Drift : 0.01

Phantom Data

Name : APREL-Uni
Type : Uni-Phantom
Size : 280 x 280 x 200
Serial No. : System Default
Location : Center
Description : validation

Tissue Data

Type : Body
Serial No. : 123
Frequency : 835 MHz
Calibration Date : 01-Nov-2004
Temperature : 20 °C
Ambient Temp. : 22 °C
Humidity : 52 RH%
Epsilon : 56.69 F/m
Sigma : 0.96 S/m
Density : 1000 kg/cu. m

Probe Data

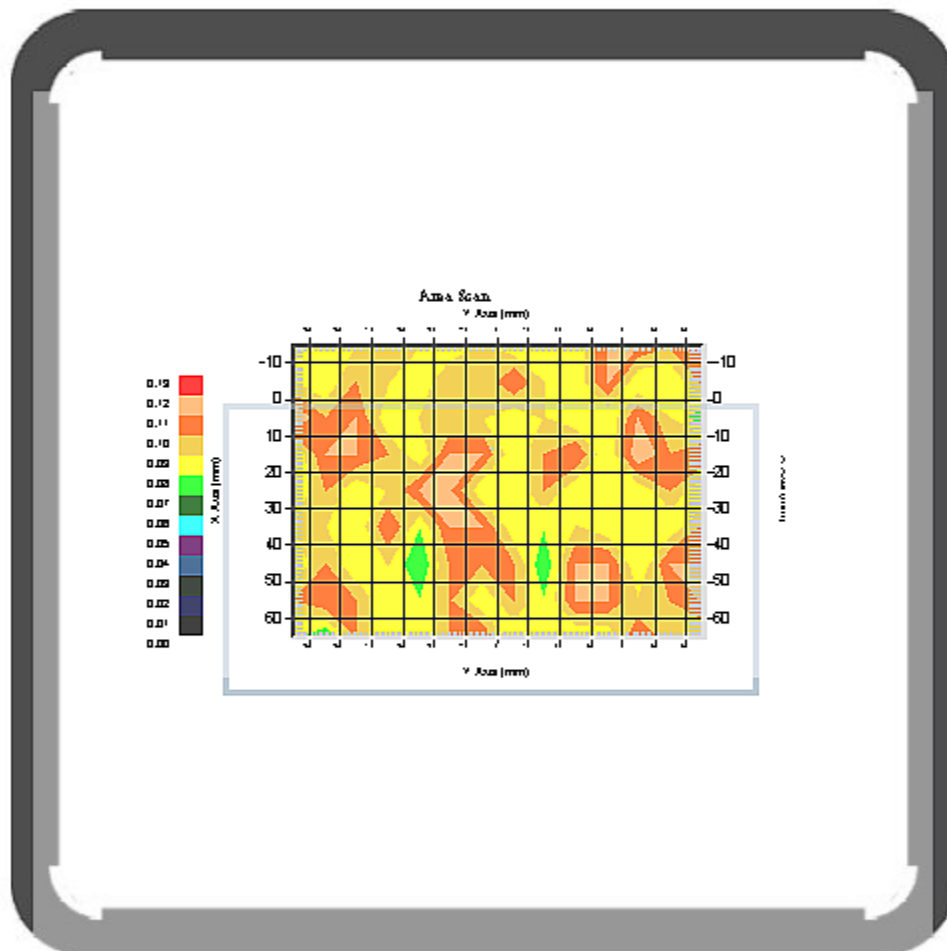
Name : RFEL 215
Model : E020
Type : E-Field Triangle
Serial No. : 215
Calibration Date : 29-Jul-2004
Frequency : 835 MHz
Duty Cycle Factor : 1
Conversion Factor : 5.9
Probe Sensitivity : 1.20 1.20 1.20 $\mu\text{V}/(\text{V}/\text{sq. m})$
Compression Point : 95
Offset : 1.56

Measurement Data

Crest Factor : 1
Scan Type : Complete
Set-up Date : 01-Nov-2004
Set-up Time : 9:18:22 AM

Other Data

DUT Position : Touch
Separation : 0
Channel : Low - 01A



1 gram SAR value : 0.09 W/kg
10 gram SAR value : 0.09 W/kg
Area Scan Peak SAR : 0.12
Zoom Scan Peak SAR : 0.18

Exposure Assessment Measurement Uncertainty

Source of Uncertainty	Tolerance Value	Probability Distribution	Divisor	c_i^{-1} (1-g)	c_i^{-1} (10-g)	Standard Uncertainty (1-g)	Standard Uncertainty (10-g)
Measurement System							
Probe Calibration	3.5	normal	1	1	1	3.5	3.5
Axial Isotropy	3.7	rectangular	•3	$(1-cp)^{1/2}$	$(1-cp)^{1/2}$	1.5	1.5
Hemispherical Isotropy	10.9	rectangular	•3	•cp	•cp	4.4	4.4
Boundary Effect	1.0	rectangular	•3	1	1	0.6	0.6
Linearity	4.7	rectangular	•3	1	1	2.7	2.7
Detection Limit	1.0	rectangular	•3	1	1	0.6	0.6
Readout Electronics	1.0	normal	1	1	1	1.0	1.0
Response Time	0.8	rectangular	•3	1	1	0.5	0.5
Integration Time	1.7	rectangular	•3	1	1	1.0	1.0
RF Ambient Condition	3.0	rectangular	•3	1	1	1.7	1.7
Probe Positioner Mech.	0.4	rectangular	•3	1	1	0.2	0.2
Restriction							
Probe Positioning with respect to Phantom Shell	2.9	rectangular	•3	1	1	1.7	1.7
Extrapolation and Integration	3.7	rectangular	•3	1	1	2.1	2.1
Test Sample Positioning	4.0	normal	1	1	1	4.0	4.0
Device Holder Uncertainty	2.0	normal	1	1	1	2.0	2.0
Drift of Output Power	0.0	rectangular	•3	1	1	0.0	0.0
Phantom and Setup							
Phantom Uncertainty(shape & thickness tolerance)	3.4	rectangular	•3	1	1	2.0	2.0
Liquid Conductivity(target)	5.0	rectangular	•3	0.7	0.5	2.0	1.4
Liquid Conductivity(meas.)	0.1	rectangular	•3	0.7	0.5	0.0	0.0
Liquid Permittivity(target)	2.0	rectangular	•3	0.6	0.5	0.7	0.6
Liquid Permittivity(meas.)	5.7	rectangular	•3	0.6	0.5	2.0	1.6
Combined Uncertainty		RSS				9.3	9.1
Combined Uncertainty (coverage factor=2)		Normal (k=2)				18.6	18.2

SAR Test Report

Operator : Jay
Validation Date : 01-Nov-2004
Measurement Date : 01-Nov-2004
Starting Time : 01-Nov-2004 11:49:57 AM
End Time : 01-Nov-2004 12:16:41 PM
Scanning Time : 1604 secs

Product Data

Device Name : Medical Data Electronic
Serial No. : Prototype
Type : Other
Model : 20701
Frequency : 611.00 MHz
Max. Transmit Pwr : 0.0065 W
Drift Time : 0 min(s)
Length : 70
Width : 130
Depth : 20
Antenna Type : Internal
Power Drift-Start : 0.11
Power Drift-Finish : 0.11
Power Drift : 0.00

Phantom Data

Name : APREL-Uni
Type : Uni-Phantom
Size : 280 x 280 x 200
Serial No. : System Default
Location : Center
Description : validation

Tissue Data

Type : Body
Serial No. : 123
Frequency : 835 MHz
Calibration Date : 01-Nov-2004
Temperature : 20 °C
Ambient Temp. : 22 °C
Humidity : 52 RH%
Epsilon : 56.69 F/m
Sigma : 0.96 S/m
Density : 1000 kg/cu. m

Probe Data

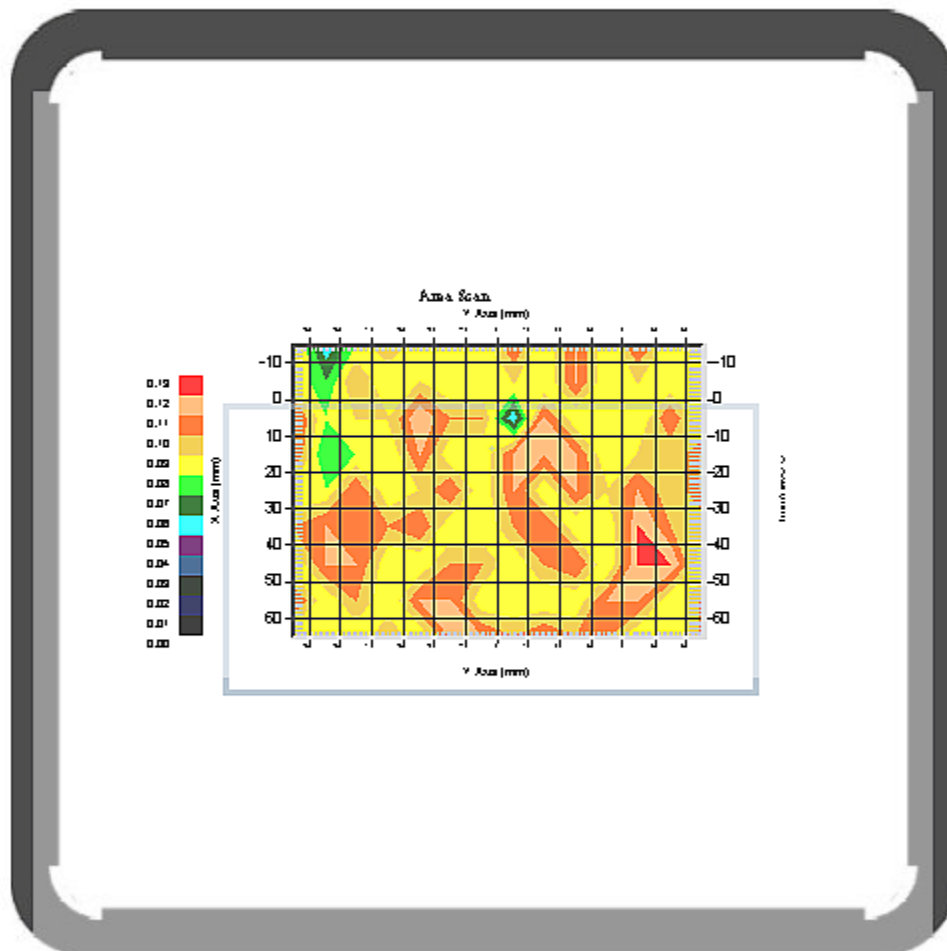
Name : RFEL 215
Model : E020
Type : E-Field Triangle
Serial No. : 215
Calibration Date : 29-Jul-2004
Frequency : 835 MHz
Duty Cycle Factor : 1
Conversion Factor : 5.9
Probe Sensitivity : 1.20 1.20 1.20 $\mu\text{V}/(\text{V}/\text{sq. m})$
Compression Point : 95
Offset : 1.56

Measurement Data

Crest Factor : 1
 Scan Type : Complete
 Set-up Date : 01-Nov-2004
 Set-up Time : 9:18:22 AM

Other Data

DUT Position : Touch
 Separation : 0
 Channel : Mid - 42C



1 gram SAR value : 0.12 W/kg
 10 gram SAR value : 0.10 W/kg
 Area Scan Peak SAR : 0.12
 Zoom Scan Peak SAR : 0.31

Exposure Assessment Measurement Uncertainty

Source of Uncertainty	Tolerance Value	Probability Distribution	Divisor	c_i (1-g)	c_i (10-g)	Standard Uncertainty (1-g)	Standard Uncertainty (10-g)
Measurement System							
Probe Calibration	3.5	normal	1	1	1	3.5	3.5
Axial Isotropy	3.7	rectangular	•3	$(1-cp)^{1/2}$	$(1-cp)^{1/2}$	1.5	1.5
Hemispherical Isotropy	10.9	rectangular	•3	•cp	•cp	4.4	4.4
Boundary Effect	1.0	rectangular	•3	1	1	0.6	0.6
Linearity	4.7	rectangular	•3	1	1	2.7	2.7
Detection Limit	1.0	rectangular	•3	1	1	0.6	0.6
Readout Electronics	1.0	normal	1	1	1	1.0	1.0
Response Time	0.8	rectangular	•3	1	1	0.5	0.5
Integration Time	1.7	rectangular	•3	1	1	1.0	1.0
RF Ambient Condition	3.0	rectangular	•3	1	1	1.7	1.7
Probe Positioner Mech.	0.4	rectangular	•3	1	1	0.2	0.2
Restriction							
Probe Positioning with respect to Phantom Shell	2.9	rectangular	•3	1	1	1.7	1.7
Extrapolation and Integration	3.7	rectangular	•3	1	1	2.1	2.1
Test Sample Positioning	4.0	normal	1	1	1	4.0	4.0
Device Holder Uncertainty	2.0	normal	1	1	1	2.0	2.0
Drift of Output Power	0.0	rectangular	•3	1	1	0.0	0.0
Phantom and Setup							
Phantom Uncertainty(shape & thickness tolerance)	3.4	rectangular	•3	1	1	2.0	2.0
Liquid Conductivity(target)	5.0	rectangular	•3	0.7	0.5	2.0	1.4
Liquid Conductivity(meas.)	0.1	rectangular	•3	0.7	0.5	0.0	0.0
Liquid Permittivity(target)	2.0	rectangular	•3	0.6	0.5	0.7	0.6
Liquid Permittivity(meas.)	5.7	rectangular	•3	0.6	0.5	2.0	1.6
Combined Uncertainty		RSS				9.3	9.1
Combined Uncertainty (coverage factor=2)		Normal (k=2)				18.6	18.2

SAR Test Report

Operator : Jay
Validation Date : 01-Nov-2004
Measurement Date : 01-Nov-2004
Starting Time : 01-Nov-2004 02:26:56 PM
End Time : 01-Nov-2004 02:53:32 PM
Scanning Time : 1596 secs

Product Data

Device Name : Medical Data Electronic
Serial No. : Prototype
Type : Other
Model : 20701
Frequency : 611.00 MHz
Max. Transmit Pwr : 0.0065 W
Drift Time : 0 min(s)
Length : 70
Width : 130
Depth : 20
Antenna Type : Internal
Power Drift-Start : 0.06
Power Drift-Finish : 0.10
Power Drift : 0.04

Phantom Data

Name : APREL-Uni
Type : Uni-Phantom
Size : 280 x 280 x 200
Serial No. : System Default
Location : Center
Description : validation

Tissue Data

Type : Body
Serial No. : 123
Frequency : 835 MHz
Calibration Date : 01-Nov-2004
Temperature : 20 °C
Ambient Temp. : 22 °C
Humidity : 52 RH%
Epsilon : 56.69 F/m
Sigma : 0.96 S/m
Density : 1000 kg/cu. m

Probe Data

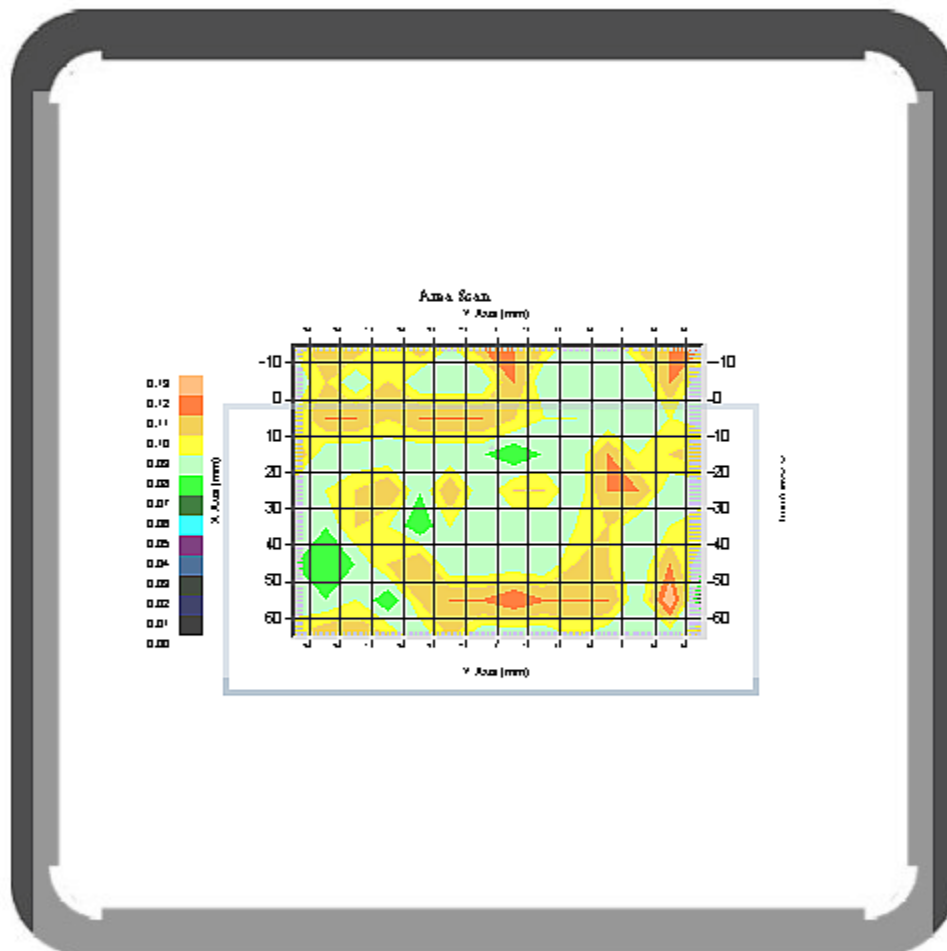
Name : RFEL 215
Model : E020
Type : E-Field Triangle
Serial No. : 215
Calibration Date : 29-Jul-2004
Frequency : 835 MHz
Duty Cycle Factor : 1
Conversion Factor : 5.9
Probe Sensitivity : 1.20 1.20 1.20 $\mu\text{V}/(\text{V}/\text{sq. m})$
Compression Point : 95
Offset : 1.56

Measurement Data

Crest Factor : 1
 Scan Type : Complete
 Set-up Date : 01-Nov-2004
 Set-up Time : 9:18:22 AM

Other Data

DUT Position : Touch
 Separation : 0
 Channel : High - 83E



1 gram SAR value : 0.11 W/kg
 10 gram SAR value : 0.10 W/kg
 Area Scan Peak SAR : 0.13
 Zoom Scan Peak SAR : 0.24

Exposure Assessment Measurement Uncertainty

Source of Uncertainty	Tolerance Value	Probability Distribution	Divisor	c_i (1-g)	c_i (10-g)	Standard Uncertainty (1-g)	Standard Uncertainty (10-g)
Measurement System							
Probe Calibration	3.5	normal	1	1	1	3.5	3.5
Axial Isotropy	3.7	rectangular	•3	$(1-cp)^{1/2}$	$(1-cp)^{1/2}$	1.5	1.5
Hemispherical Isotropy	10.9	rectangular	•3	•cp	•cp	4.4	4.4
Boundary Effect	1.0	rectangular	•3	1	1	0.6	0.6
Linearity	4.7	rectangular	•3	1	1	2.7	2.7
Detection Limit	1.0	rectangular	•3	1	1	0.6	0.6
Readout Electronics	1.0	normal	1	1	1	1.0	1.0
Response Time	0.8	rectangular	•3	1	1	0.5	0.5
Integration Time	1.7	rectangular	•3	1	1	1.0	1.0
RF Ambient Condition	3.0	rectangular	•3	1	1	1.7	1.7
Probe Positioner Mech.	0.4	rectangular	•3	1	1	0.2	0.2
Restriction							
Probe Positioning with respect to Phantom Shell	2.9	rectangular	•3	1	1	1.7	1.7
Extrapolation and Integration	3.7	rectangular	•3	1	1	2.1	2.1
Test Sample Positioning	4.0	normal	1	1	1	4.0	4.0
Device Holder Uncertainty	2.0	normal	1	1	1	2.0	2.0
Drift of Output Power	0.0	rectangular	•3	1	1	0.0	0.0
Phantom and Setup							
Phantom Uncertainty(shape & thickness tolerance)	3.4	rectangular	•3	1	1	2.0	2.0
Liquid Conductivity(target)	5.0	rectangular	•3	0.7	0.5	2.0	1.4
Liquid Conductivity(meas.)	0.1	rectangular	•3	0.7	0.5	0.0	0.0
Liquid Permittivity(target)	2.0	rectangular	•3	0.6	0.5	0.7	0.6
Liquid Permittivity(meas.)	5.7	rectangular	•3	0.6	0.5	2.0	1.6
Combined Uncertainty		RSS				9.3	9.1
Combined Uncertainty (coverage factor=2)		Normal (k=2)				18.6	18.2

SAR Test Report

Operator : Jay
Validation Date : 01-Nov-2004
Measurement Date : 01-Nov-2004
Starting Time : 01-Nov-2004 12:58:35 PM
End Time : 01-Nov-2004 01:25:16 PM
Scanning Time : 1601 secs

Product Data

Device Name : Medical Data Electronic
Serial No. : Prototype
Type : Other
Model : 20701
Frequency : 611.00 MHz
Max. Transmit Pwr : 0.0065 W
Drift Time : 0 min(s)
Length : 70
Width : 130
Depth : 20
Antenna Type : Internal
Power Drift-Start : 0.09
Power Drift-Finish : 0.09
Power Drift : 0.00

Phantom Data

Name : APREL-Uni
Type : Uni-Phantom
Size : 280 x 280 x 200
Serial No. : System Default
Location : Center
Description : validation

Tissue Data

Type : Body
Serial No. : 123
Frequency : 835 MHz
Calibration Date : 01-Nov-2004
Temperature : 20 °C
Ambient Temp. : 22 °C
Humidity : 52 RH%
Epsilon : 56.69 F/m
Sigma : 0.96 S/m
Density : 1000 kg/cu. m

Probe Data

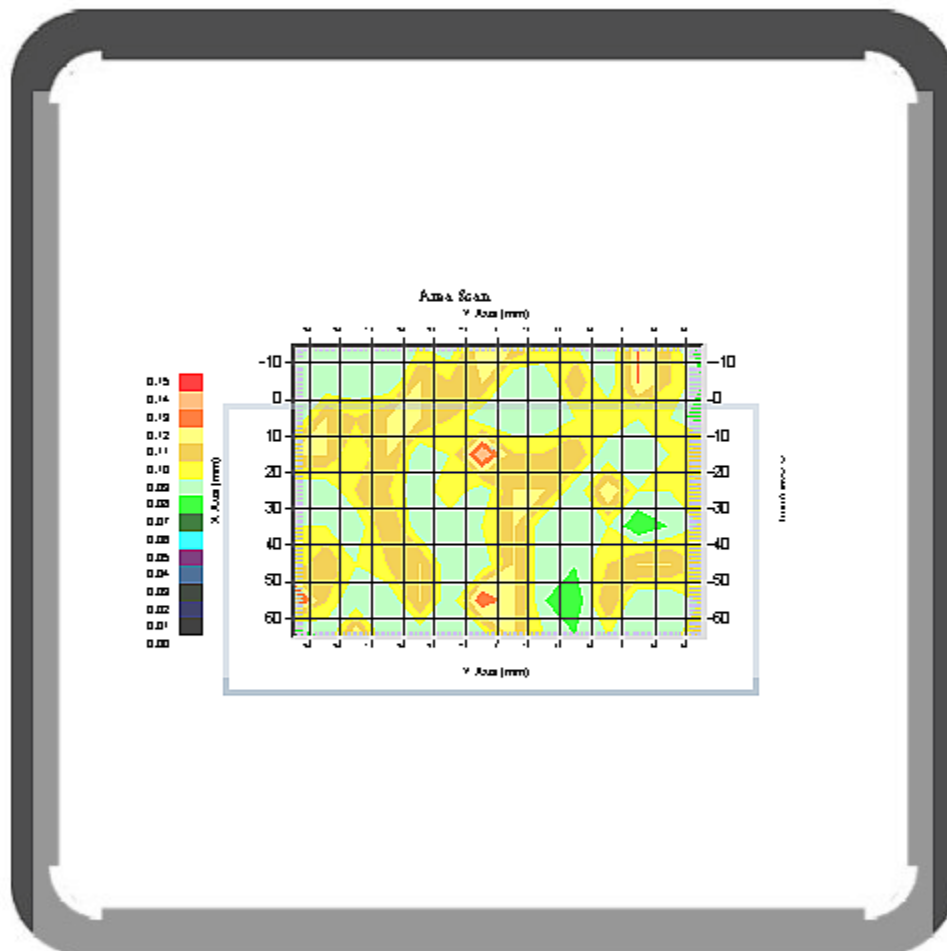
Name : RFEL 215
Model : E020
Type : E-Field Triangle
Serial No. : 215
Calibration Date : 29-Jul-2004
Frequency : 835 MHz
Duty Cycle Factor : 1
Conversion Factor : 5.9
Probe Sensitivity : 1.20 1.20 1.20 $\mu\text{V}/(\text{V}/\text{sq. m})$
Compression Point : 95
Offset : 1.56

Measurement Data

Crest Factor : 1
 Scan Type : Complete
 Set-up Date : 01-Nov-2004
 Set-up Time : 9:18:22 AM

Other Data

DUT Position : Touch
 Separation : 0
 Channel : Low - 01A



1 gram SAR value : 0.11 W/kg
 10 gram SAR value : 0.09 W/kg
 Area Scan Peak SAR : 0.14
 Zoom Scan Peak SAR : 0.36

Exposure Assessment Measurement Uncertainty

Source of Uncertainty	Tolerance Value	Probability Distribution	Divisor	c_i^{-1} (1-g)	c_i^{-1} (10-g)	Standard Uncertainty (1-g)	Standard Uncertainty (10-g)
Measurement System							
Probe Calibration	3.5	normal	1	1	1	3.5	3.5
Axial Isotropy	3.7	rectangular	•3	$(1-cp)^{1/2}$	$(1-cp)^{1/2}$	1.5	1.5
Hemispherical Isotropy	10.9	rectangular	•3	•cp	•cp	4.4	4.4
Boundary Effect	1.0	rectangular	•3	1	1	0.6	0.6
Linearity	4.7	rectangular	•3	1	1	2.7	2.7
Detection Limit	1.0	rectangular	•3	1	1	0.6	0.6
Readout Electronics	1.0	normal	1	1	1	1.0	1.0
Response Time	0.8	rectangular	•3	1	1	0.5	0.5
Integration Time	1.7	rectangular	•3	1	1	1.0	1.0
RF Ambient Condition	3.0	rectangular	•3	1	1	1.7	1.7
Probe Positioner Mech.	0.4	rectangular	•3	1	1	0.2	0.2
Restriction							
Probe Positioning with respect to Phantom Shell	2.9	rectangular	•3	1	1	1.7	1.7
Extrapolation and Integration	3.7	rectangular	•3	1	1	2.1	2.1
Test Sample Positioning	4.0	normal	1	1	1	4.0	4.0
Device Holder Uncertainty	2.0	normal	1	1	1	2.0	2.0
Drift of Output Power	0.0	rectangular	•3	1	1	0.0	0.0
Phantom and Setup							
Phantom Uncertainty(shape & thickness tolerance)	3.4	rectangular	•3	1	1	2.0	2.0
Liquid Conductivity(target)	5.0	rectangular	•3	0.7	0.5	2.0	1.4
Liquid Conductivity(meas.)	0.1	rectangular	•3	0.7	0.5	0.0	0.0
Liquid Permittivity(target)	2.0	rectangular	•3	0.6	0.5	0.7	0.6
Liquid Permittivity(meas.)	5.7	rectangular	•3	0.6	0.5	2.0	1.6
Combined Uncertainty		RSS				9.3	9.1
Combined Uncertainty (coverage factor=2)		Normal (k=2)				18.6	18.2

SAR Test Report

Operator : Jay
Validation Date : 01-Nov-2004
Measurement Date : 01-Nov-2004
Starting Time : 01-Nov-2004 12:22:56 PM
End Time : 01-Nov-2004 12:49:49 PM
Scanning Time : 1613 secs

Product Data

Device Name : Medical Data Electronic
Serial No. : Prototype
Type : Other
Model : 20701
Frequency : 611.00 MHz
Max. Transmit Pwr : 0.0065 W
Drift Time : 0 min(s)
Length : 70
Width : 130
Depth : 20
Antenna Type : Internal
Power Drift-Start : 0.09
Power Drift-Finish: 0.07
Power Drift : 0.02

Phantom Data

Name : APREL-Uni
Type : Uni-Phantom
Size : 280 x 280 x 200
Serial No. : System Default
Location : Center
Description : validation

Tissue Data

Type : Body
Serial No. : 123
Frequency : 835 MHz
Calibration Date : 01-Nov-2004
Temperature : 20 °C
Ambient Temp. : 22 °C
Humidity : 52 RH%
Epsilon : 56.69 F/m
Sigma : 0.96 S/m
Density : 1000 kg/cu. m

Probe Data

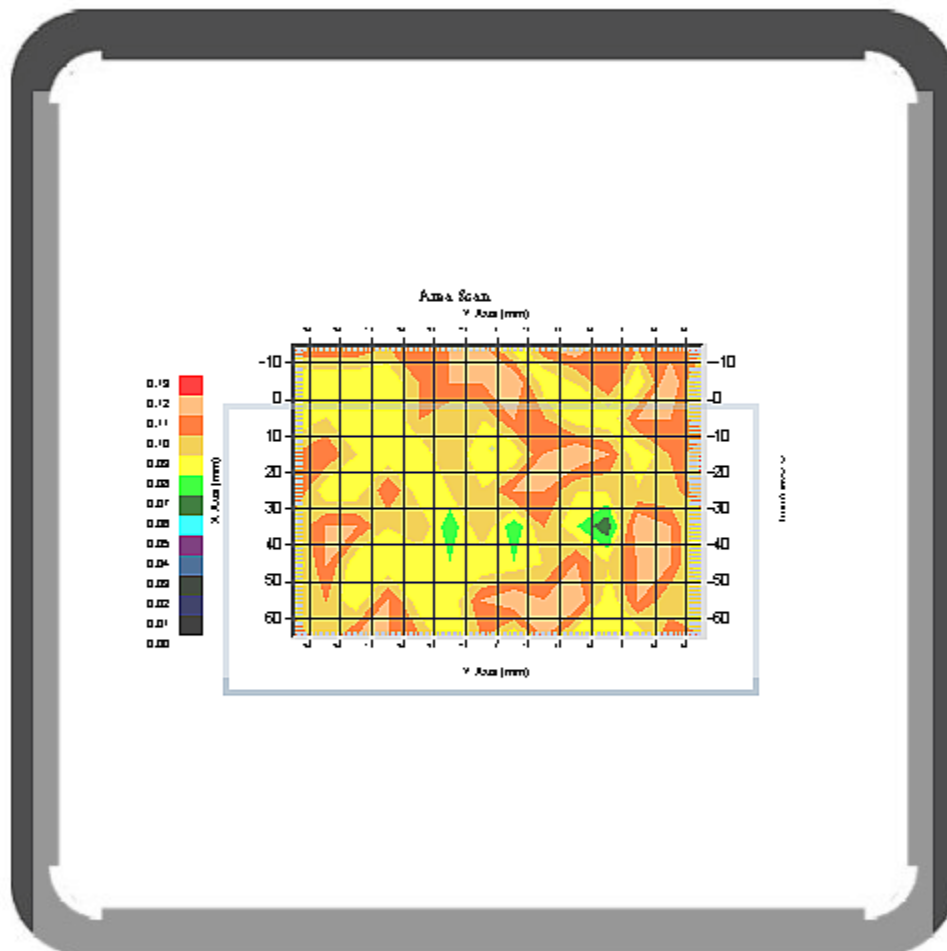
Name : RFEL 215
Model : E020
Type : E-Field Triangle
Serial No. : 215
Calibration Date : 29-Jul-2004
Frequency : 835 MHz
Duty Cycle Factor: 1
Conversion Factor: 5.9
Probe Sensitivity: 1.20 1.20 1.20 $\mu\text{V}/(\text{V}/\text{sq. m})$
Compression Point: 95
Offset : 1.56

Measurement Data

Crest Factor : 1
Scan Type : Complete
Set-up Date : 01-Nov-2004
Set-up Time : 9:18:22 AM

Other Data

DUT Position : Touch
Separation : 0
Channel : Mid - 42C



1 gram SAR value : 0.12 W/kg
10 gram SAR value : 0.10 W/kg
Area Scan Peak SAR : 0.12
Zoom Scan Peak SAR : 0.26

Exposure Assessment Measurement Uncertainty

Source of Uncertainty	Tolerance Value	Probability Distribution	Divisor	c_i^{-1} (1-g)	c_i^{-1} (10-g)	Standard Uncertainty (1-g)	Standard Uncertainty (10-g)
Measurement System							
Probe Calibration	3.5	normal	1	1	1	3.5	3.5
Axial Isotropy	3.7	rectangular	•3	$(1-cp)^{1/2}$	$(1-cp)^{1/2}$	1.5	1.5
Hemispherical Isotropy	10.9	rectangular	•3	•cp	•cp	4.4	4.4
Boundary Effect	1.0	rectangular	•3	1	1	0.6	0.6
Linearity	4.7	rectangular	•3	1	1	2.7	2.7
Detection Limit	1.0	rectangular	•3	1	1	0.6	0.6
Readout Electronics	1.0	normal	1	1	1	1.0	1.0
Response Time	0.8	rectangular	•3	1	1	0.5	0.5
Integration Time	1.7	rectangular	•3	1	1	1.0	1.0
RF Ambient Condition	3.0	rectangular	•3	1	1	1.7	1.7
Probe Positioner Mech.	0.4	rectangular	•3	1	1	0.2	0.2
Restriction							
Probe Positioning with respect to Phantom Shell	2.9	rectangular	•3	1	1	1.7	1.7
Extrapolation and Integration	3.7	rectangular	•3	1	1	2.1	2.1
Test Sample Positioning	4.0	normal	1	1	1	4.0	4.0
Device Holder Uncertainty	2.0	normal	1	1	1	2.0	2.0
Drift of Output Power	0.0	rectangular	•3	1	1	0.0	0.0
Phantom and Setup							
Phantom Uncertainty(shape & thickness tolerance)	3.4	rectangular	•3	1	1	2.0	2.0
Liquid Conductivity(target)	5.0	rectangular	•3	0.7	0.5	2.0	1.4
Liquid Conductivity(meas.)	0.1	rectangular	•3	0.7	0.5	0.0	0.0
Liquid Permittivity(target)	2.0	rectangular	•3	0.6	0.5	0.7	0.6
Liquid Permittivity(meas.)	5.7	rectangular	•3	0.6	0.5	2.0	1.6
Combined Uncertainty		RSS				9.3	9.1
Combined Uncertainty (coverage factor=2)		Normal (k=2)				18.6	18.2

SAR Test Report

Operator : Jay
Validation Date : 01-Nov-2004
Measurement Date : 01-Nov-2004
Starting Time : 01-Nov-2004 01:57:48 PM
End Time : 01-Nov-2004 02:24:28 PM
Scanning Time : 1600 secs

Product Data

Device Name : Medical Data Electronic
Serial No. : Prototype
Type : Other
Model : 20701
Frequency : 611.00 MHz
Max. Transmit Pwr : 0.0065 W
Drift Time : 0 min(s)
Length : 70
Width : 130
Depth : 20
Antenna Type : Internal
Power Drift-Start : 0.10
Power Drift-Finish : 0.09
Power Drift : 0.01

Phantom Data

Name : APREL-Uni
Type : Uni-Phantom
Size : 280 x 280 x 200
Serial No. : System Default
Location : Center
Description : validation

Tissue Data

Type : Body
Serial No. : 123
Frequency : 835 MHz
Calibration Date : 01-Nov-2004
Temperature : 20 °C
Ambient Temp. : 22 °C
Humidity : 52 RH%
Epsilon : 56.69 F/m
Sigma : 0.96 S/m
Density : 1000 kg/cu. m

Probe Data

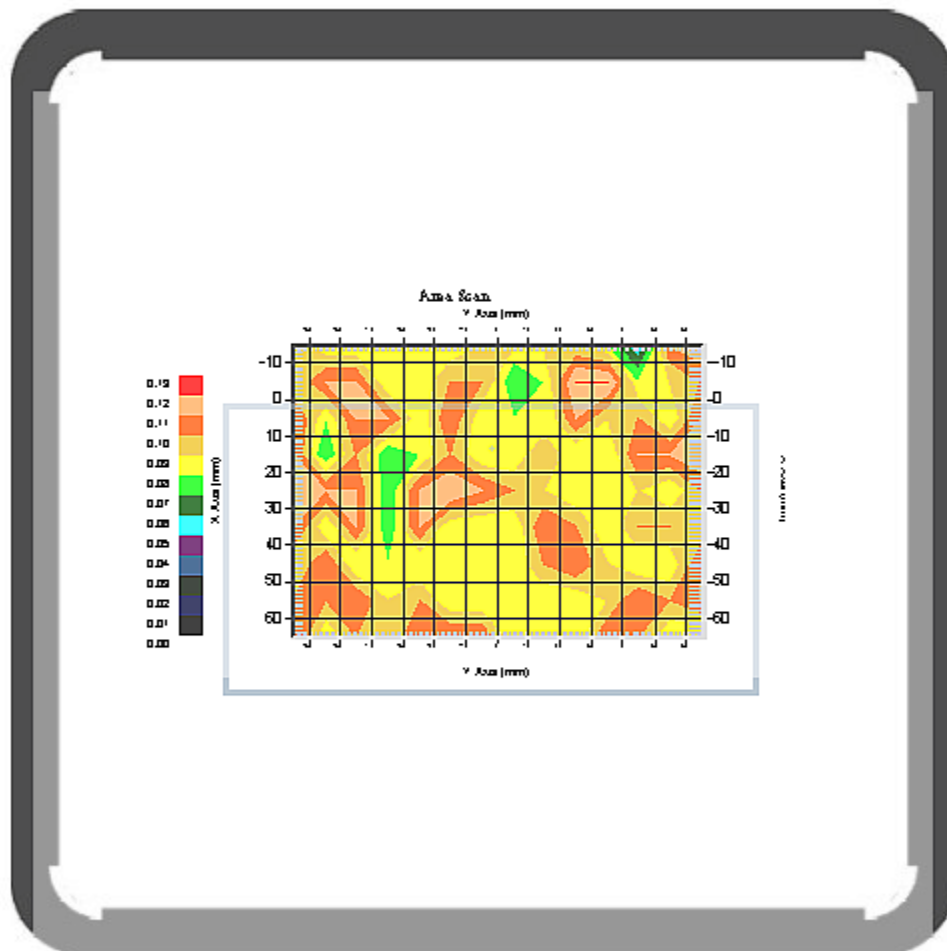
Name : RFEL 215
Model : E020
Type : E-Field Triangle
Serial No. : 215
Calibration Date : 29-Jul-2004
Frequency : 835 MHz
Duty Cycle Factor : 1
Conversion Factor : 5.9
Probe Sensitivity : 1.20 1.20 1.20 $\mu\text{V}/(\text{V}/\text{sq. m})$
Compression Point : 95
Offset : 1.56

Measurement Data

```
Crest Factor      : 1
Scan Type         : Complete
Set-up Date       : 01-Nov-2004
Set-up Time       : 9:18:22 AM
```

Other Data

```
DUT Position      : Touch
Separation        : 0
Channel           : High - 83E
```



```
1 gram SAR value      : 0.12 W/kg
10 gram SAR value     : 0.10 W/kg
Area Scan Peak SAR    : 0.12
Zoom Scan Peak SAR    : 0.35
```


Exposure Assessment Measurement Uncertainty

Source of Uncertainty	Tolerance Value	Probability Distribution	Divisor	c_i^{-1} (1-g)	c_i^{-1} (10-g)	Standard Uncertainty (1-g)	Standard Uncertainty (10-g)
Measurement System							
Probe Calibration	3.5	normal	1	1	1	3.5	3.5
Axial Isotropy	3.7	rectangular	•3	$(1-cp)^{1/2}$	$(1-cp)^{1/2}$	1.5	1.5
Hemispherical Isotropy	10.9	rectangular	•3	•cp	•cp	4.4	4.4
Boundary Effect	1.0	rectangular	•3	1	1	0.6	0.6
Linearity	4.7	rectangular	•3	1	1	2.7	2.7
Detection Limit	1.0	rectangular	•3	1	1	0.6	0.6
Readout Electronics	1.0	normal	1	1	1	1.0	1.0
Response Time	0.8	rectangular	•3	1	1	0.5	0.5
Integration Time	1.7	rectangular	•3	1	1	1.0	1.0
RF Ambient Condition	3.0	rectangular	•3	1	1	1.7	1.7
Probe Positioner Mech.	0.4	rectangular	•3	1	1	0.2	0.2
Restriction							
Probe Positioning with respect to Phantom Shell	2.9	rectangular	•3	1	1	1.7	1.7
Extrapolation and Integration	3.7	rectangular	•3	1	1	2.1	2.1
Test Sample Positioning	4.0	normal	1	1	1	4.0	4.0
Device Holder Uncertainty	2.0	normal	1	1	1	2.0	2.0
Drift of Output Power	0.0	rectangular	•3	1	1	0.0	0.0
Phantom and Setup							
Phantom Uncertainty(shape & thickness tolerance)	3.4	rectangular	•3	1	1	2.0	2.0
Liquid Conductivity(target)	5.0	rectangular	•3	0.7	0.5	2.0	1.4
Liquid Conductivity(meas.)	0.1	rectangular	•3	0.7	0.5	0.0	0.0
Liquid Permittivity(target)	2.0	rectangular	•3	0.6	0.5	0.7	0.6
Liquid Permittivity(meas.)	5.7	rectangular	•3	0.6	0.5	2.0	1.6
Combined Uncertainty		RSS				9.3	9.1
Combined Uncertainty (coverage factor=2)		Normal (k=2)				18.6	18.2

SAR Test Report

Operator : Jay
Validation Date : 01-Nov-2004
Measurement Date : 01-Nov-2004
Starting Time : 01-Nov-2004 03:19:54 PM
End Time : 01-Nov-2004 03:35:36 PM
Scanning Time : 942 secs

Product Data

Device Name : Medical Data Electronic
Serial No. : Prototype
Type : Other
Model : 20701
Frequency : 611.00 MHz
Max. Transmit Pwr : 0.0065 W
Drift Time : 0 min(s)
Length : 20
Width : 130
Depth : 70
Antenna Type : Internal
Power Drift-Start : 0.07
Power Drift-Finish : 0.06
Power Drift : 0.01

Phantom Data

Name : APREL-Uni
Type : Uni-Phantom
Size : 280 x 280 x 200
Serial No. : System Default
Location : Center
Description : validation

Tissue Data

Type : Body
Serial No. : 123
Frequency : 835 MHz
Calibration Date : 01-Nov-2004
Temperature : 20 °C
Ambient Temp. : 23 °C
Humidity : 52 RH%
Epsilon : 56.69 F/m
Sigma : 0.96 S/m
Density : 1000 kg/cu. m

Probe Data

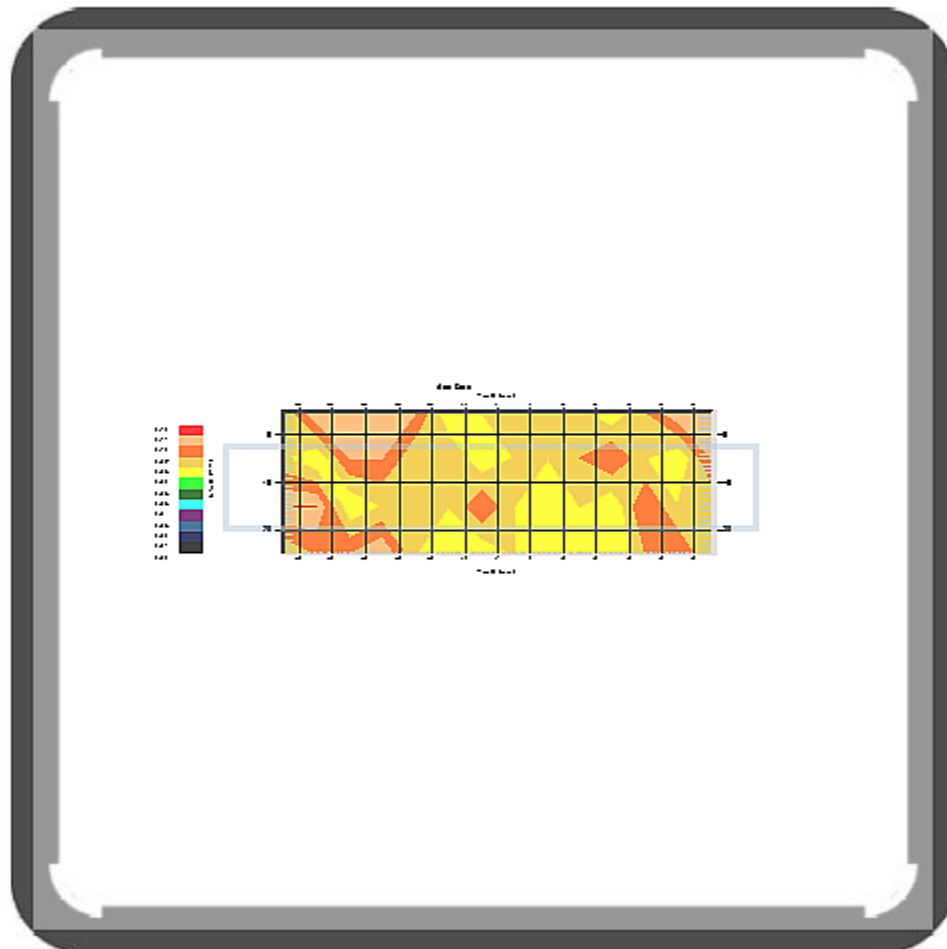
Name : RFEL 215
Model : E020
Type : E-Field Triangle
Serial No. : 215
Calibration Date : 29-Jul-2004
Frequency : 835 MHz
Duty Cycle Factor : 1
Conversion Factor : 5.9
Probe Sensitivity : 1.20 1.20 1.20 $\mu\text{V}/(\text{V}/\text{sq. m})$
Compression Point : 95
Offset : 1.56

Measurement Data

Crest Factor : 1
Scan Type : Complete
Set-up Date : 01-Nov-2004
Set-up Time : 9:18:22 AM

Other Data

DUT Position : Touch
Separation : 0
Channel : Low - 01A



1 gram SAR value : 0.11 W/kg
10 gram SAR value : 0.10 W/kg
Area Scan Peak SAR : 0.11
Zoom Scan Peak SAR : 0.32

Exposure Assessment Measurement Uncertainty

Source of Uncertainty	Tolerance Value	Probability Distribution	Divisor	c_i (1-g)	c_i (10-g)	Standard Uncertainty (1-g)	Standard Uncertainty (10-g)
Measurement System							
Probe Calibration	3.5	normal	1	1	1	3.5	3.5
Axial Isotropy	3.7	rectangular	•3	$(1-cp)^{1/2}$	$(1-cp)^{1/2}$	1.5	1.5
Hemispherical Isotropy	10.9	rectangular	•3	•cp	•cp	4.4	4.4
Boundary Effect	1.0	rectangular	•3	1	1	0.6	0.6
Linearity	4.7	rectangular	•3	1	1	2.7	2.7
Detection Limit	1.0	rectangular	•3	1	1	0.6	0.6
Readout Electronics	1.0	normal	1	1	1	1.0	1.0
Response Time	0.8	rectangular	•3	1	1	0.5	0.5
Integration Time	1.7	rectangular	•3	1	1	1.0	1.0
RF Ambient Condition	3.0	rectangular	•3	1	1	1.7	1.7
Probe Positioner Mech.	0.4	rectangular	•3	1	1	0.2	0.2
Restriction							
Probe Positioning with respect to Phantom Shell	2.9	rectangular	•3	1	1	1.7	1.7
Extrapolation and Integration	3.7	rectangular	•3	1	1	2.1	2.1
Test Sample Positioning	4.0	normal	1	1	1	4.0	4.0
Device Holder Uncertainty	2.0	normal	1	1	1	2.0	2.0
Drift of Output Power	0.0	rectangular	•3	1	1	0.0	0.0
Phantom and Setup							
Phantom Uncertainty(shape & thickness tolerance)	3.4	rectangular	•3	1	1	2.0	2.0
Liquid Conductivity(target)	5.0	rectangular	•3	0.7	0.5	2.0	1.4
Liquid Conductivity(meas.)	0.1	rectangular	•3	0.7	0.5	0.0	0.0
Liquid Permittivity(target)	2.0	rectangular	•3	0.6	0.5	0.7	0.6
Liquid Permittivity(meas.)	5.7	rectangular	•3	0.6	0.5	2.0	1.6
Combined Uncertainty		RSS				9.3	9.1
Combined Uncertainty (coverage factor=2)		Normal (k=2)				18.6	18.2

SAR Test Report

Operator : Jay
Validation Date : 01-Nov-2004
Measurement Date : 01-Nov-2004
Starting Time : 01-Nov-2004 03:39:45 PM
End Time : 01-Nov-2004 03:55:21 PM
Scanning Time : 936 secs

Product Data

Device Name : Medical Data Electronic
Serial No. : Prototype
Type : Other
Model : 20701
Frequency : 611.00 MHz
Max. Transmit Pwr : 0.0065 W
Drift Time : 0 min(s)
Length : 20
Width : 130
Depth : 70
Antenna Type : Internal
Power Drift-Start : 0.06
Power Drift-Finish : 0.06
Power Drift : 0.00

Phantom Data

Name : APREL-Uni
Type : Uni-Phantom
Size : 280 x 280 x 200
Serial No. : System Default
Location : Center
Description : validation

Tissue Data

Type : Body
Serial No. : 123
Frequency : 835 MHz
Calibration Date : 01-Nov-2004
Temperature : 20 °C
Ambient Temp. : 23 °C
Humidity : 52 RH%
Epsilon : 56.69 F/m
Sigma : 0.96 S/m
Density : 1000 kg/cu. m

Probe Data

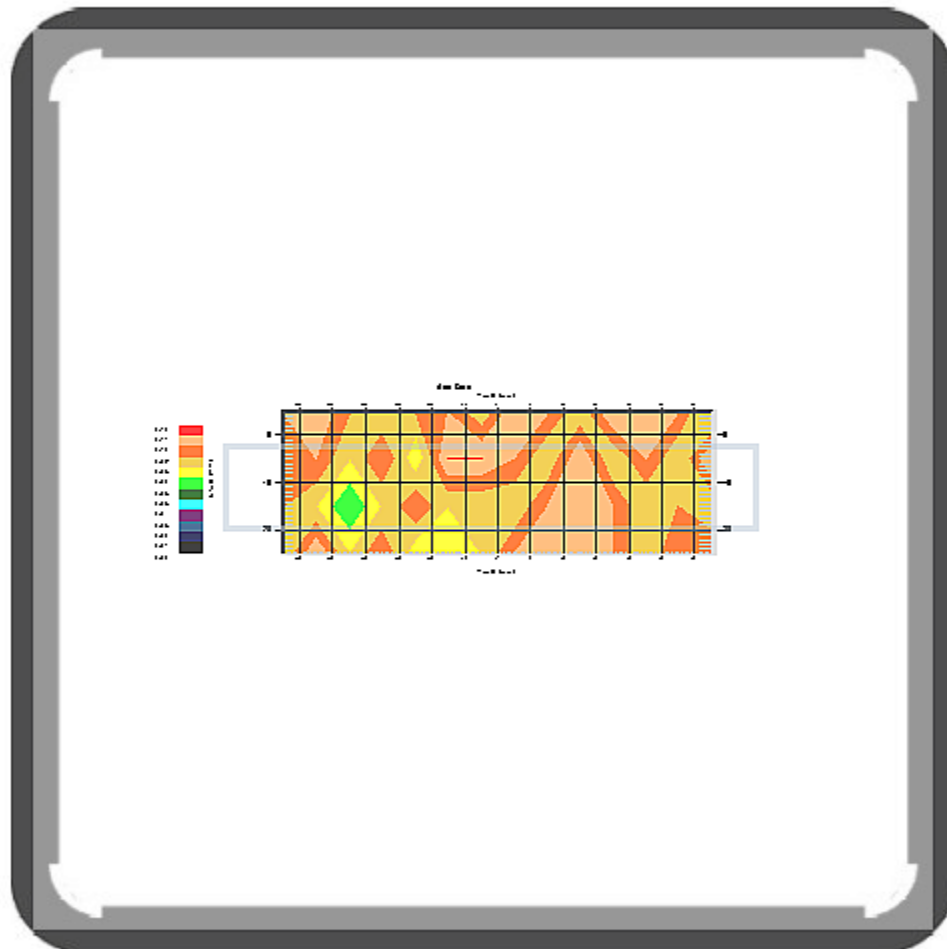
Name : RFEL 215
Model : E020
Type : E-Field Triangle
Serial No. : 215
Calibration Date : 29-Jul-2004
Frequency : 835 MHz
Duty Cycle Factor : 1
Conversion Factor : 5.9
Probe Sensitivity : 1.20 1.20 1.20 $\mu\text{V}/(\text{V}/\text{sq. m})$
Compression Point : 95
Offset : 1.56

Measurement Data

Crest Factor : 1
Scan Type : Complete
Set-up Date : 01-Nov-2004
Set-up Time : 9:18:22 AM

Other Data

DUT Position : Touch
Separation : 0
Channel : Mid - 42C



1 gram SAR value : 0.11 W/kg
10 gram SAR value : 0.10 W/kg
Area Scan Peak SAR : 0.11
Zoom Scan Peak SAR : 0.25

Exposure Assessment Measurement Uncertainty

Source of Uncertainty	Tolerance Value	Probability Distribution	Divisor	c_i (1-g)	c_i (10-g)	Standard Uncertainty (1-g)	Standard Uncertainty (10-g)
Measurement System							
Probe Calibration	3.5	normal	1	1	1	3.5	3.5
Axial Isotropy	3.7	rectangular	•3	$(1-cp)^{1/2}$	$(1-cp)^{1/2}$	1.5	1.5
Hemispherical Isotropy	10.9	rectangular	•3	•cp	•cp	4.4	4.4
Boundary Effect	1.0	rectangular	•3	1	1	0.6	0.6
Linearity	4.7	rectangular	•3	1	1	2.7	2.7
Detection Limit	1.0	rectangular	•3	1	1	0.6	0.6
Readout Electronics	1.0	normal	1	1	1	1.0	1.0
Response Time	0.8	rectangular	•3	1	1	0.5	0.5
Integration Time	1.7	rectangular	•3	1	1	1.0	1.0
RF Ambient Condition	3.0	rectangular	•3	1	1	1.7	1.7
Probe Positioner Mech.	0.4	rectangular	•3	1	1	0.2	0.2
Restriction							
Probe Positioning with respect to Phantom Shell	2.9	rectangular	•3	1	1	1.7	1.7
Extrapolation and Integration	3.7	rectangular	•3	1	1	2.1	2.1
Test Sample Positioning	4.0	normal	1	1	1	4.0	4.0
Device Holder Uncertainty	2.0	normal	1	1	1	2.0	2.0
Drift of Output Power	0.0	rectangular	•3	1	1	0.0	0.0
Phantom and Setup							
Phantom Uncertainty(shape & thickness tolerance)	3.4	rectangular	•3	1	1	2.0	2.0
Liquid Conductivity(target)	5.0	rectangular	•3	0.7	0.5	2.0	1.4
Liquid Conductivity(meas.)	0.1	rectangular	•3	0.7	0.5	0.0	0.0
Liquid Permittivity(target)	2.0	rectangular	•3	0.6	0.5	0.7	0.6
Liquid Permittivity(meas.)	5.7	rectangular	•3	0.6	0.5	2.0	1.6
Combined Uncertainty		RSS				9.3	9.1
Combined Uncertainty (coverage factor=2)		Normal (k=2)				18.6	18.2

SAR Test Report

Operator : Jay
Validation Date : 01-Nov-2004
Measurement Date : 01-Nov-2004
Starting Time : 01-Nov-2004 03:00:48 PM
End Time : 01-Nov-2004 03:16:32 PM
Scanning Time : 944 secs

Product Data

Device Name : Medical Data Electronic
Serial No. : Prototype
Type : Other
Model : 20701
Frequency : 611.00 MHz
Max. Transmit Pwr : 0.0065 W
Drift Time : 0 min(s)
Length : 20
Width : 130
Depth : 70
Antenna Type : Internal
Power Drift-Start : 0.06
Power Drift-Finish : 0.06
Power Drift : 0.00

Phantom Data

Name : APREL-Uni
Type : Uni-Phantom
Size : 280 x 280 x 200
Serial No. : System Default
Location : Center
Description : validation

Tissue Data

Type : Body
Serial No. : 123
Frequency : 835 MHz
Calibration Date : 01-Nov-2004
Temperature : 20 °C
Ambient Temp. : 23 °C
Humidity : 52 RH%
Epsilon : 56.69 F/m
Sigma : 0.96 S/m
Density : 1000 kg/cu. m

Probe Data

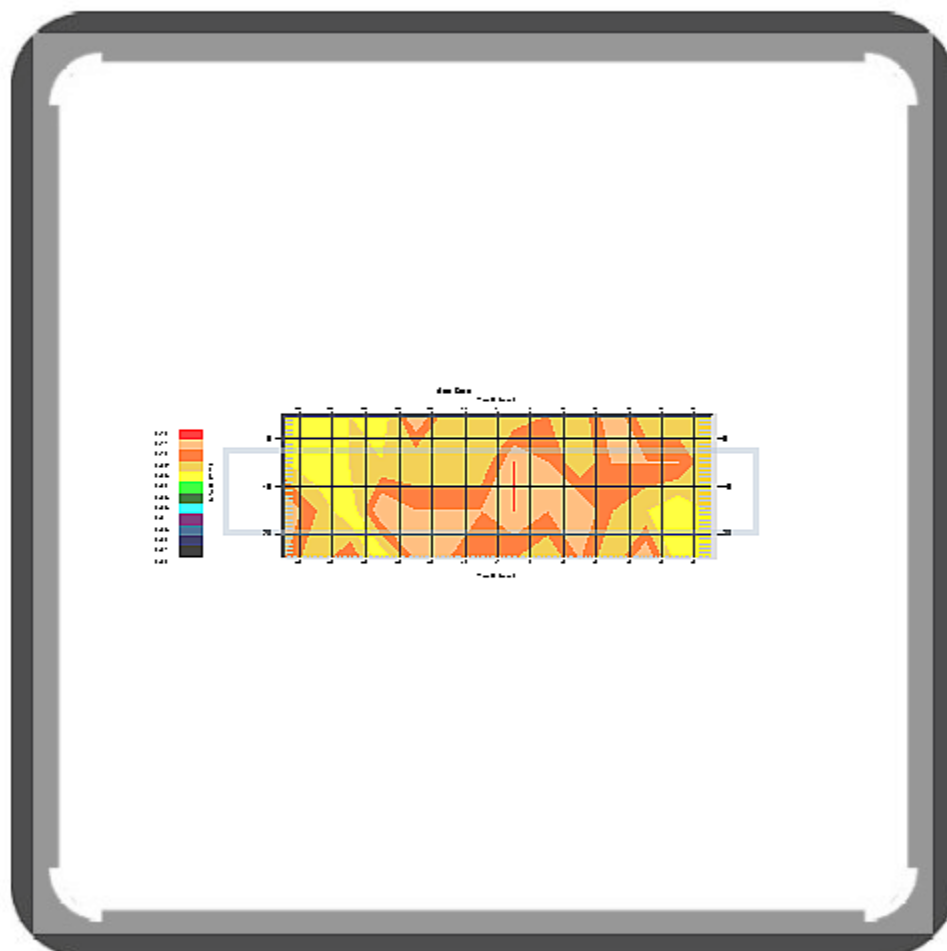
Name : RFEL 215
Model : E020
Type : E-Field Triangle
Serial No. : 215
Calibration Date : 29-Jul-2004
Frequency : 835 MHz
Duty Cycle Factor : 1
Conversion Factor : 5.9
Probe Sensitivity : 1.20 1.20 1.20 $\mu\text{V}/(\text{V}/\text{sq. m})$
Compression Point : 95
Offset : 1.56

Measurement Data

Crest Factor : 1
Scan Type : Complete
Set-up Date : 01-Nov-2004
Set-up Time : 9:18:22 AM

Other Data

DUT Position : Touch
Separation : 0
Channel : High - 83E



1 gram SAR value : 0.12 W/kg
10 gram SAR value : 0.10 W/kg
Area Scan Peak SAR : 0.11
Zoom Scan Peak SAR : 0.28

Exposure Assessment Measurement Uncertainty

Source of Uncertainty	Tolerance Value	Probability Distribution	Divisor	c_i^{-1} (1-g)	c_i^{-1} (10-g)	Standard Uncertainty (1-g)	Standard Uncertainty (10-g)
Measurement System							
Probe Calibration	3.5	normal	1	1	1	3.5	3.5
Axial Isotropy	3.7	rectangular	•3	$(1-cp)^{1/2}$	$(1-cp)^{1/2}$	1.5	1.5
Hemispherical Isotropy	10.9	rectangular	•3	•cp	•cp	4.4	4.4
Boundary Effect	1.0	rectangular	•3	1	1	0.6	0.6
Linearity	4.7	rectangular	•3	1	1	2.7	2.7
Detection Limit	1.0	rectangular	•3	1	1	0.6	0.6
Readout Electronics	1.0	normal	1	1	1	1.0	1.0
Response Time	0.8	rectangular	•3	1	1	0.5	0.5
Integration Time	1.7	rectangular	•3	1	1	1.0	1.0
RF Ambient Condition	3.0	rectangular	•3	1	1	1.7	1.7
Probe Positioner Mech.	0.4	rectangular	•3	1	1	0.2	0.2
Restriction							
Probe Positioning with respect to Phantom Shell	2.9	rectangular	•3	1	1	1.7	1.7
Extrapolation and Integration	3.7	rectangular	•3	1	1	2.1	2.1
Test Sample Positioning	4.0	normal	1	1	1	4.0	4.0
Device Holder Uncertainty	2.0	normal	1	1	1	2.0	2.0
Drift of Output Power	0.0	rectangular	•3	1	1	0.0	0.0
Phantom and Setup							
Phantom Uncertainty(shape & thickness tolerance)	3.4	rectangular	•3	1	1	2.0	2.0
Liquid Conductivity(target)	5.0	rectangular	•3	0.7	0.5	2.0	1.4
Liquid Conductivity(meas.)	0.1	rectangular	•3	0.7	0.5	0.0	0.0
Liquid Permittivity(target)	2.0	rectangular	•3	0.6	0.5	0.7	0.6
Liquid Permittivity(meas.)	5.7	rectangular	•3	0.6	0.5	2.0	1.6
Combined Uncertainty		RSS				9.3	9.1
Combined Uncertainty (coverage factor=2)		Normal (k=2)				18.6	18.2

Appendix C – SAR Test Setup Photos



Figure 1 – Front of Device



Figure 2 – Front of Device End



Figure 3 – Back of Device



Figure 4 – Back of Device End



Figure 5 – Left Side of Device



Figure 6 – Left Side of Device End

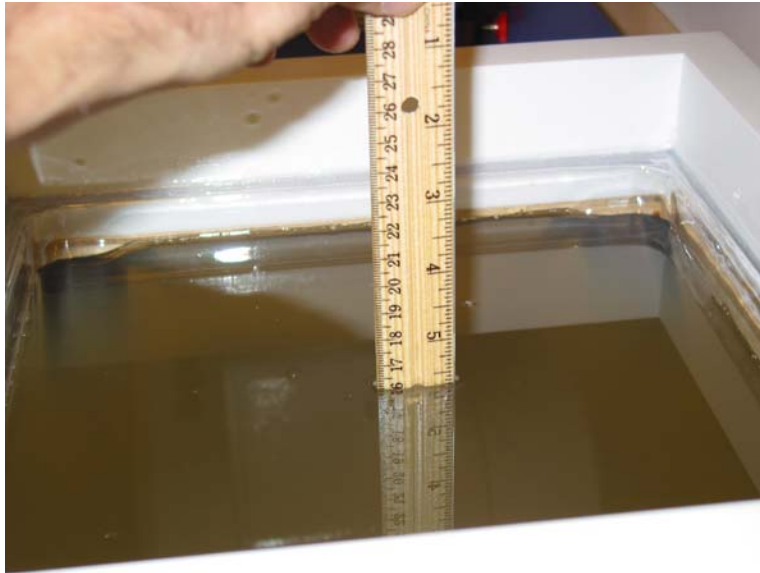


Figure 7 – Body Liquid Depth

Appendix D – Probe Calibration Data Sheets

NCL CALIBRATION LABORATORIES

Calibration File No.: CP-388

Client.: RFEL

CERTIFICATE OF CALIBRATION

It is certified that the equipment identified below has been calibrated in the
NCL CALIBRATION LABORATORIES by qualified personnel following recognized
procedures and using transfer standards traceable to NRC/NIST.

Equipment: Miniature Isotropic RF Probe 835 MHz BODY

Manufacturer: APREL Laboratories

Model No.: E-020

Serial No.: 215

Calibration Procedure: SSI/DRB-TP-D01-032-E020-V2

Project No: RFEB-ALSAS-10U-4087

Calibrated: 10th June 2004

Released on: 11th June 2004

This Calibration Certificate is Incomplete Unless Accompanied with the Calibration Results Summary

Released By: _____

NCL CALIBRATION LABORATORIES

51 SPECTRUM WAY
NEPEAN, ONTARIO
CANADA K2R 1E6

Division of APREL Lab.
TEL: (613) 820-4988
FAX: (613) 820-4161

Introduction

This Calibration Report reproduces the results of the calibration performed in line with the SSI/DRB-TP-D01-032-E020-V2 E-Field Probe Calibration Procedure. The results contained within this report are for APREL E-Field Probe E-020 215.

References

SSI/DRB-TP-D01-032-E020-V2 E-Field Probe Calibration Procedure
IEEE 1528 "Recommended Practice for Determining the Peak Spatial-Average Specific Absorption Rate (SAR) in the Human Body Due to Wireless Communications Devices: Experimental Techniques"
SSI-TP-011 Tissue Calibration Procedure

Conditions

Probe 215 was a new probe taken from stock prior to calibration.

Ambient Temperature of the Laboratory: 22 °C +/- 0.5°C
Temperature of the Tissue: 21 °C +/- 0.5°C

Calibration Results Summary

Probe Type:	E-Field Probe E-020
Serial Number:	215
Frequency:	835 MHz
Sensor Offset:	1.56 mm
Sensor Length:	2.5 mm
Tip Enclosure:	Ertalyte*
Tip Diameter:	<5 mm
Tip Length:	60 mm
Total Length:	290 mm

*Resistive to recommended tissue recipes per IEEE-1528

Sensitivity in Air

Channel X:	$1.2 \mu\text{V}/(\text{V}/\text{m})^2$
Channel Y:	$1.2 \mu\text{V}/(\text{V}/\text{m})^2$
Channel Z:	$1.2 \mu\text{V}/(\text{V}/\text{m})^2$
Diode Compression Point:	95 mV

Sensitivity in Body Tissue

Frequency: 835 MHz

Epsilon: 55.2 (+/-5%) **Sigma:** 0.97 S/m (+/-10%)

ConvF

Channel X: 5.9

Channel Y: 5.9

Channel Z: 5.9

Tissue sensitivity values were calculated using the load impedance of the APREL Laboratories Daq-Paq.

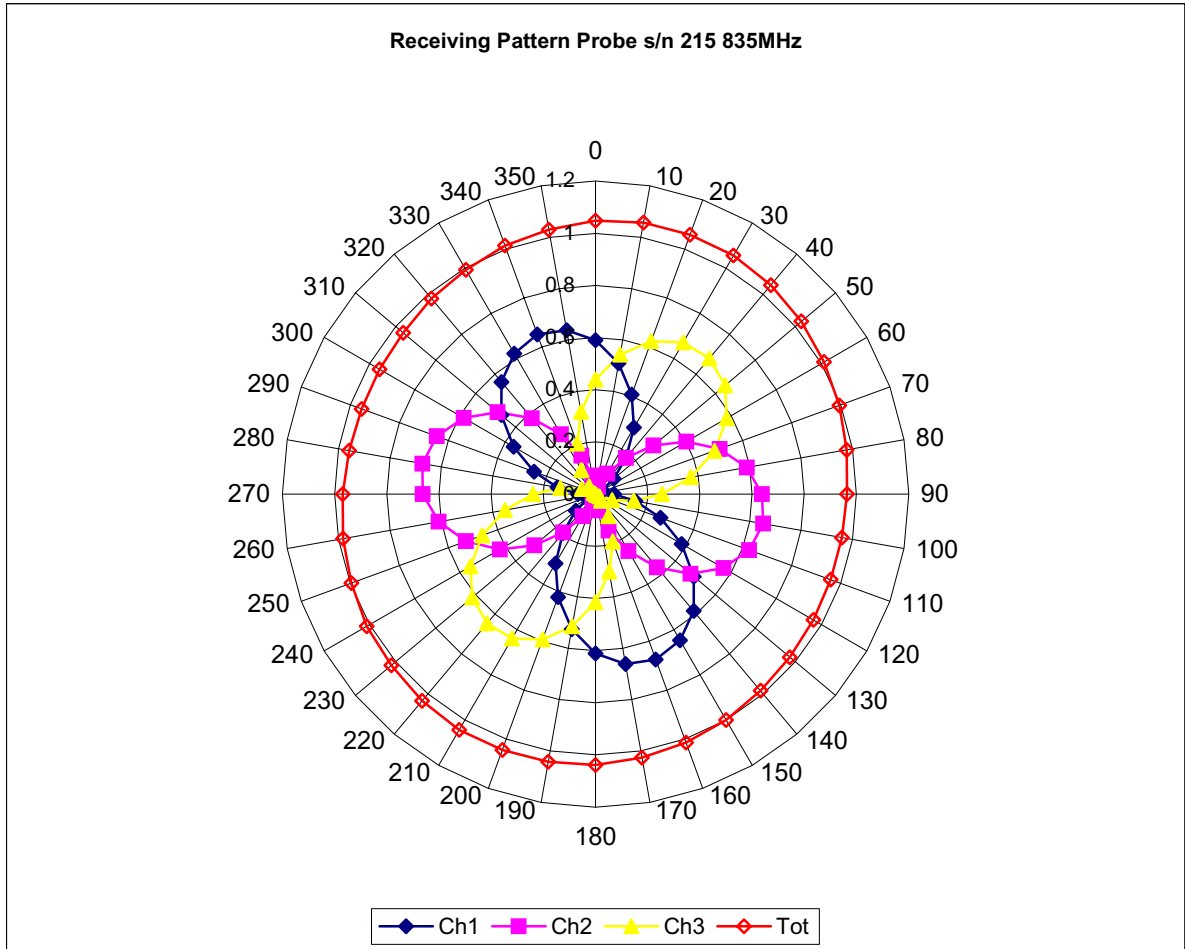
Boundary Effect:

Uncertainty resulting from the boundary effect is less than 2% for the distance between the tip of the probe and the tissue boundary, when less than 2.54mm.

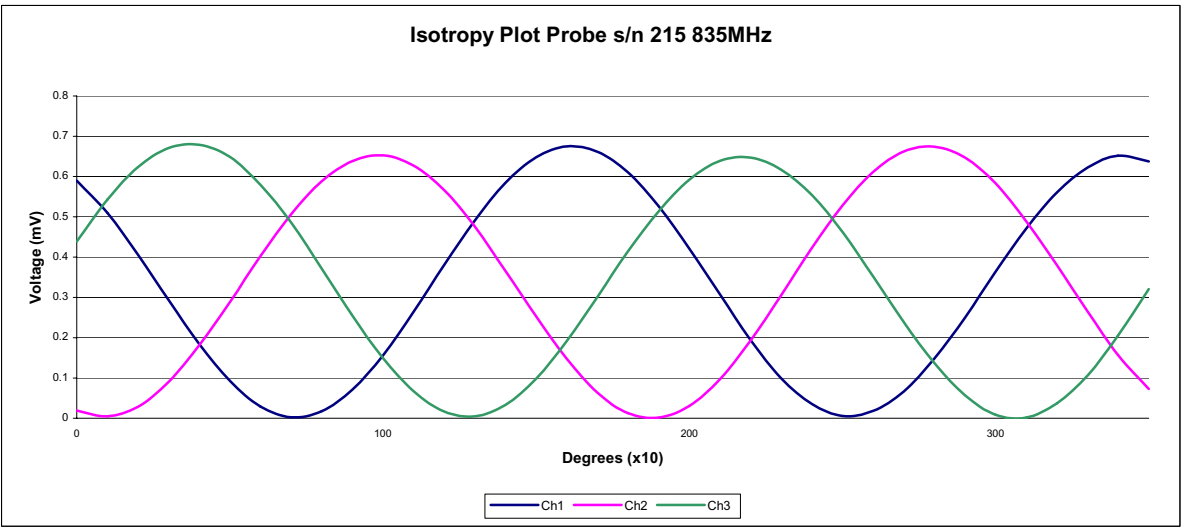
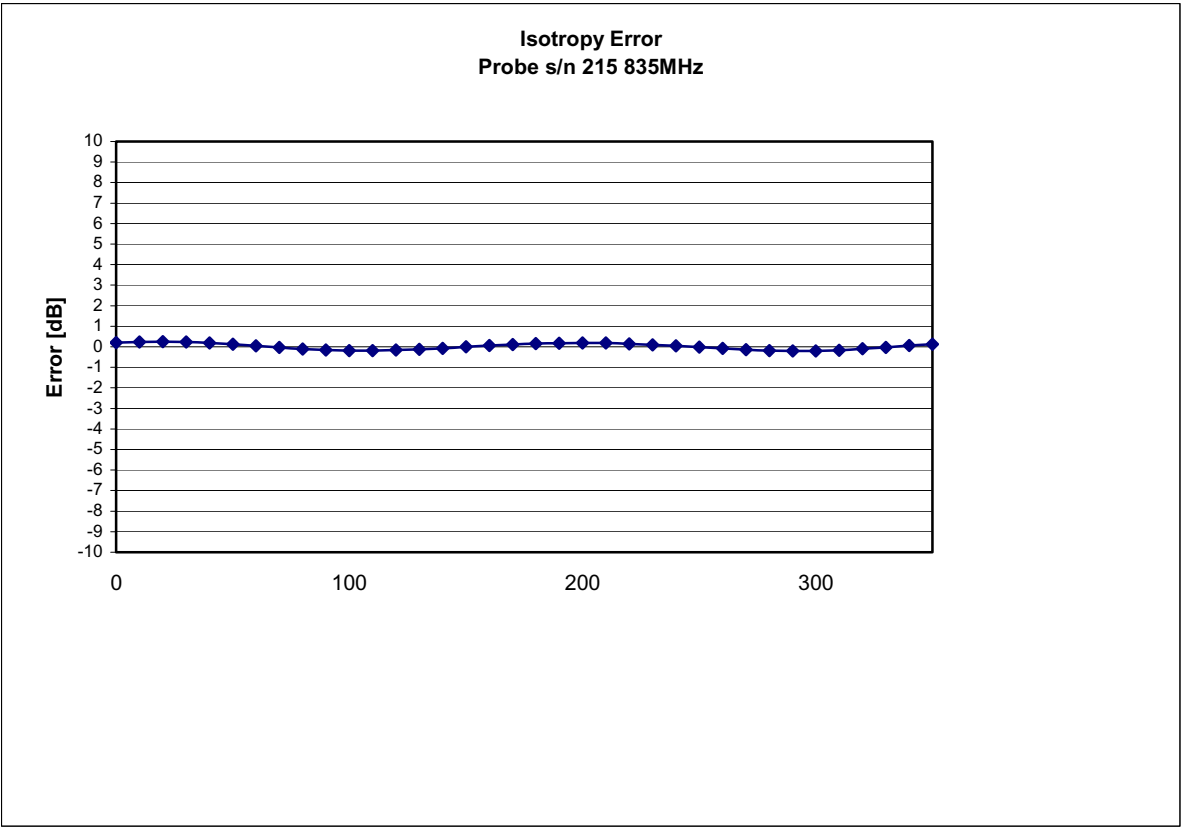
Spatial Resolution:

The measured probe tip diameter is 5 mm (+/- 0.01 mm) and therefore meets the requirements of SSI/DRB-TP-D01-032 for spatial resolution.

Receiving Pattern 835 MHz (Air)

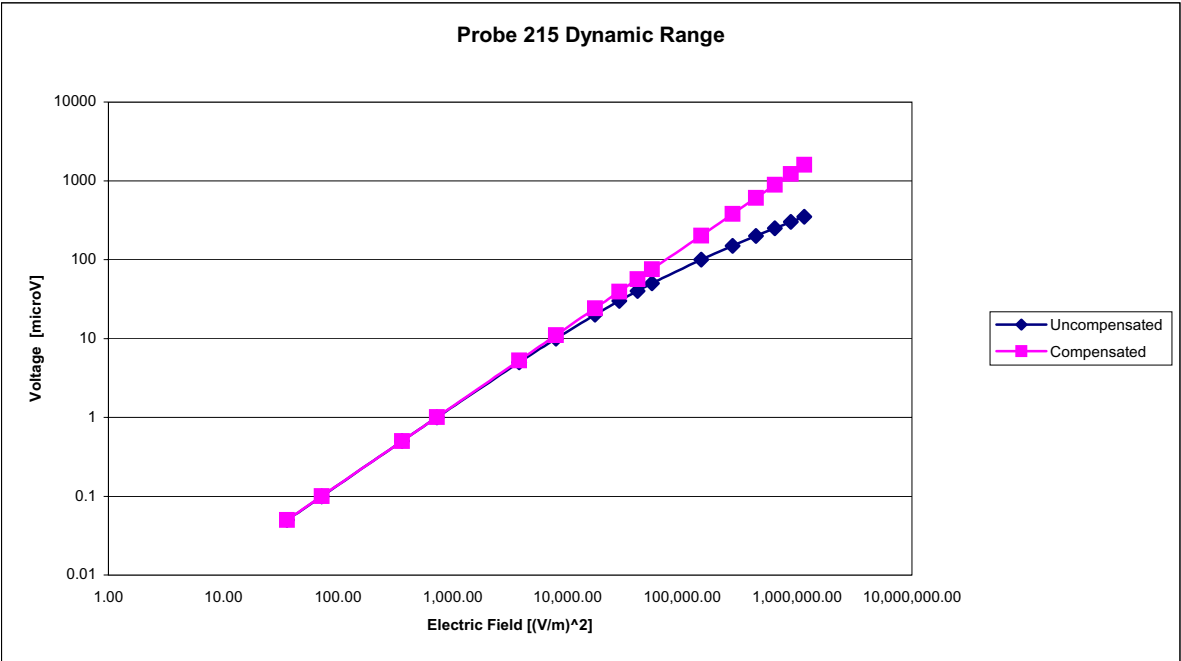


Isotropy Error 835 MHz (Air)

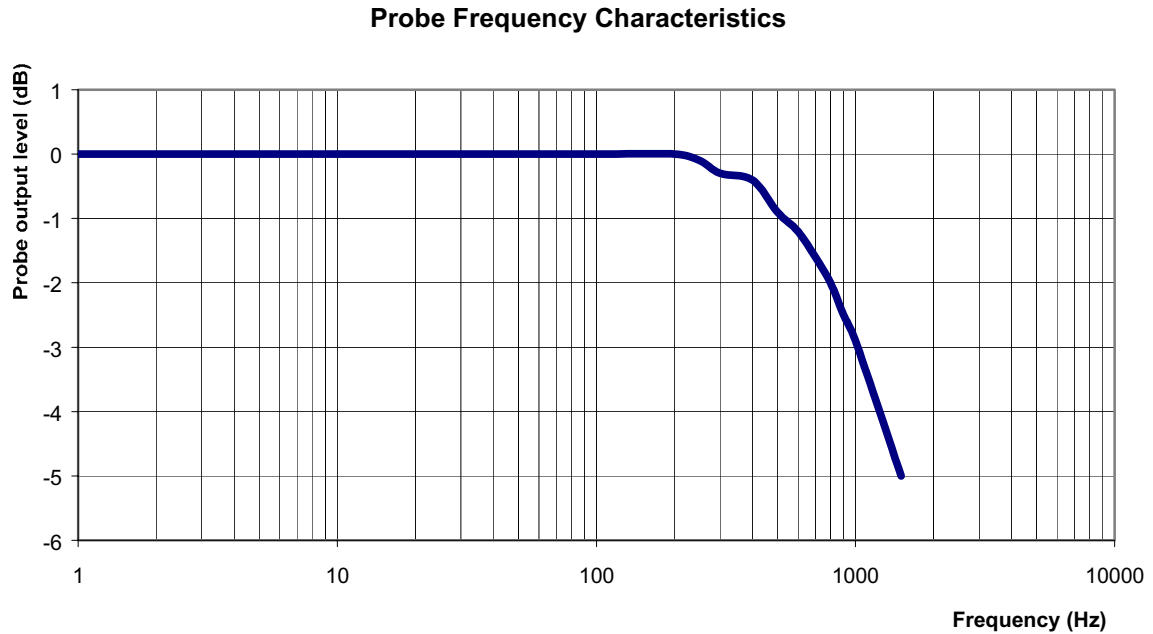


Isotropy: 0.10 dB

Dynamic Range



Video Bandwidth



Video Bandwidth at 500 Hz 1 dB
Video Bandwidth at 1.02 KHz: 3 dB

Conversion Factor Uncertainty Assessment**Frequency:** 835MHz**Epsilon:** 55.2 (+/-5%) **Sigma:** 0.97 S/m (+/-10%)**ConvF****Channel X:** 5.9 7%(K=2)**Channel Y:** 5.9 7%(K=2)**Channel Z:** 5.9 7%(K=2)

To minimize the uncertainty calculation all tissue sensitivity values were calculated using a load impedance of 5 M Ω .

Boundary Effect:

For a distance of 2.4mm the evaluated uncertainty (increase in the probe sensitivity) is less than 2%.

Test Equipment

The test equipment used during Probe Calibration, manufacturer, model number and, current calibration status are listed and located on the main APREL server R:\NCL\Calibration Equipment\Instrument List May 2004.

Appendix E – Dipole Calibration Data Sheets

NCL CALIBRATION LABORATORIES

Calibration File No: CD-339
Project Number: RFEB-ALSAS-10U-4087

CERTIFICATE OF CALIBRATION

It is certified that the equipment identified below has been calibrated in the
NCL CALIBRATION LABORATORIES by qualified personnel following recognized
procedures and using transfer standards traceable to NRC/NIST.

RFE Validation Dipole

Manufacturer: APREL Laboratories

Part number: ALS-D-835-S-2

Frequency: 835 MHz

Serial No: RFE-274

Customer: RFE

Calibrated: 20 February 2004
Released on: 20 February 2004

Released By: 

NCL CALIBRATION LABORATORIES

51 SPECTRUM WAY
NEPEAN, ONTARIO
CANADA K2R 1E6

Division of APREL Lab.
TEL: (613) 820-4088
FAX: (613) 820-4162

Calibration Results Summary

The following results relate the Calibrated Dipole and should be used as a quick reference for the user.

Mechanical Dimensions

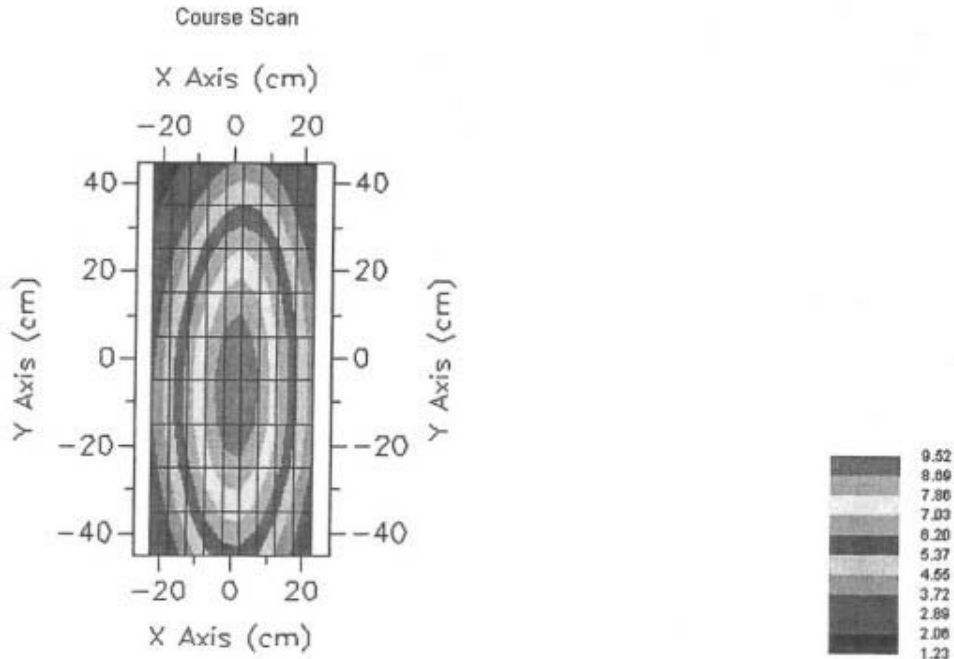
Length: 161.8 mm
Height: 91.1 mm

Electrical Specification

SWR: 1.11 U
Return Loss: -26.20 dB
Impedance: 52.40 Ω

System Validation Results

Frequency	1 Gram	10 Gram	Peak
835 MHz	9.33	6.42	15.0



Introduction

This Calibration Report has been produced in line with the SSI Dipole Calibration Procedure SSI-TP-018-ALSAS. The results contained within this report are for Validation Dipole RFE-274. The calibration routine consisted of a three-step process. Step 1 was a mechanical verification of the dipole to ensure that it meets the IEEE/APREL mechanical specifications. Step 2 was an Electrical Calibration for the Validation Dipole, where the SWR, Impedance, and the Return loss were assessed. Step 3 involved a System Validation using the ALSAS-10U, along with RFE E-020 130 MHz to 26 GHz E-Field Probe Serial Number 213.

References

SSI-TP-018-ALSAS Dipole Calibration Procedure
SSI-TP-016 Tissue Calibration Procedure
IEEE 1528 "Recommended Practice for Determining the Peak Spatial-Average Specific Absorption Rate (SAR) in the Human Body Due to Wireless Communications Devices: Experimental Techniques"

Conditions

Dipole RFE-274 was new taken from stock.

Ambient Temperature of the Laboratory: 22 °C +/- 0.5°C

Temperature of the Tissue: 20 °C +/- 0.5°C



Dipole Calibration Results

Mechanical Verification

IEEE Length	IEEE Height	Measured Length	Measured Height
162.0 mm	91.0 mm	161.8 mm	91.1 mm

Tissue Validation

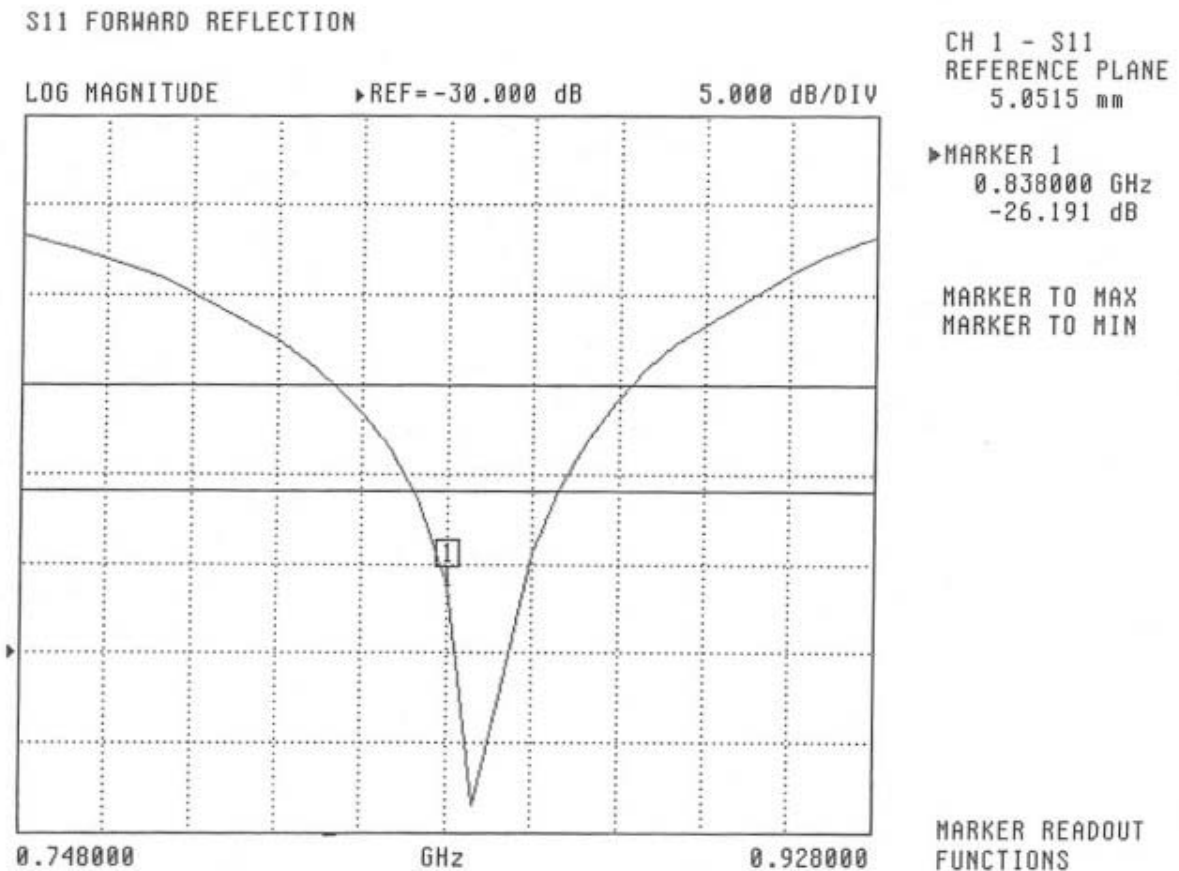
Head Tissue 835 MHz	Measured
Dielectric constant, ϵ_r	42.54
Conductivity, σ [S/m]	0.91

Electrical Calibration

Test	Result
S11 R/L	-26.2 dB
SWR	1.11 U
Impedance	52.4 Ω

The Following Graphs are the results as displayed on the Vector Network Analyzer.

S11 Parameter Return Loss



SWR

S11 FORWARD REFLECTION

SWR

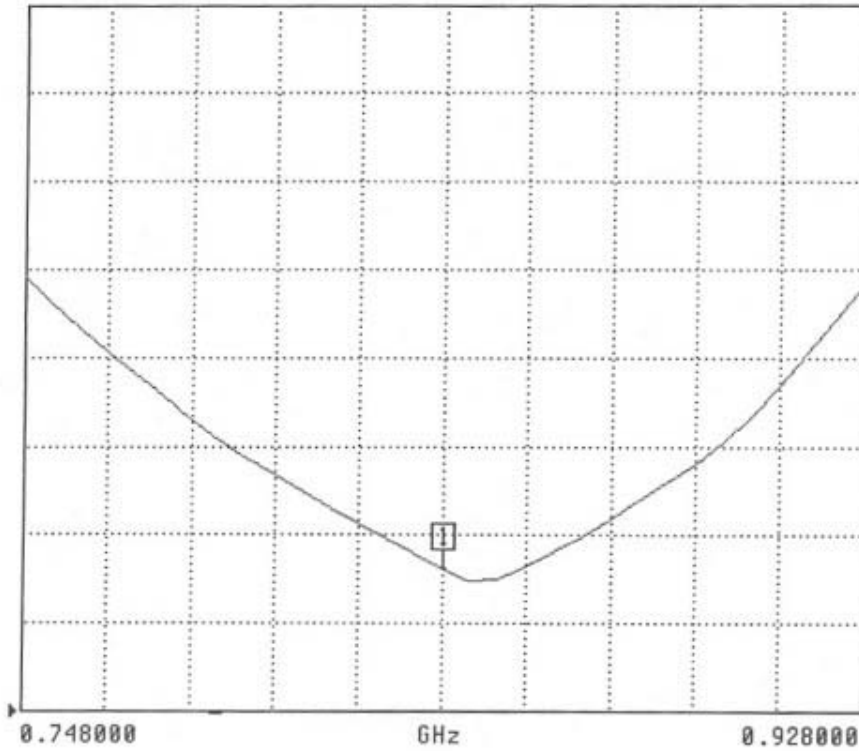
REF=294.938 mU

500.000 mU/DIV

CH 1 - S11
REFERENCE PLANE
5.0515 mm

MARKER 1
0.830000 GHz
1.108 U

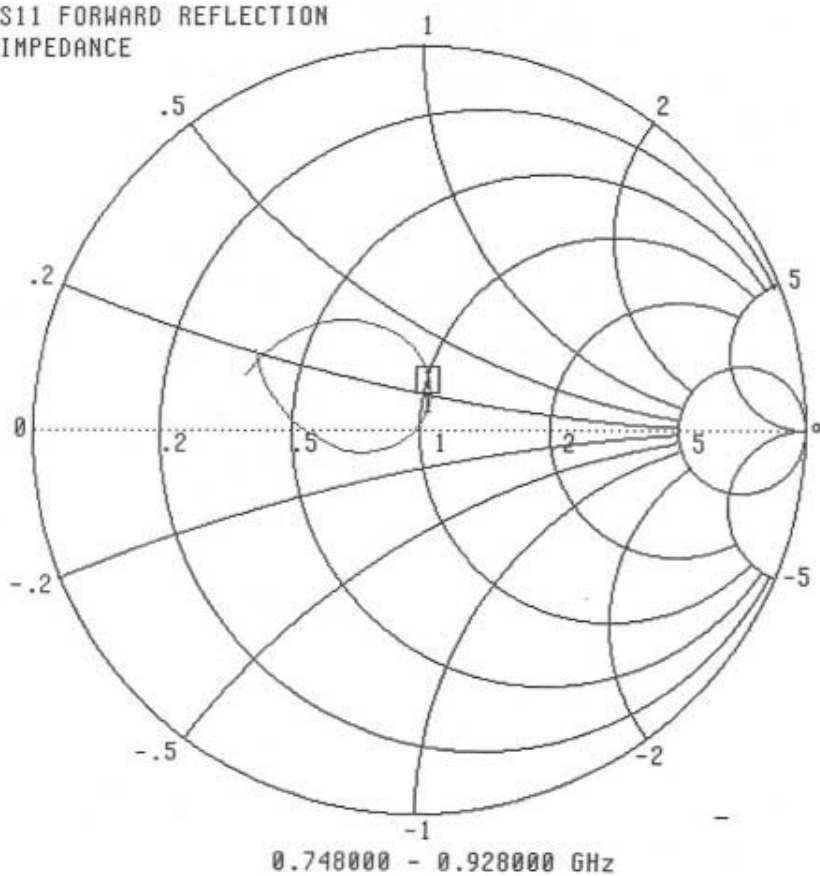
MARKER TO MAX
MARKER TO MIN



MARKER READOUT
FUNCTIONS

Smith Chart Dipole Impedance

S11 FORWARD REFLECTION
IMPEDANCE



CH 1 - S11
REFERENCE PLANE
5.0515 mm

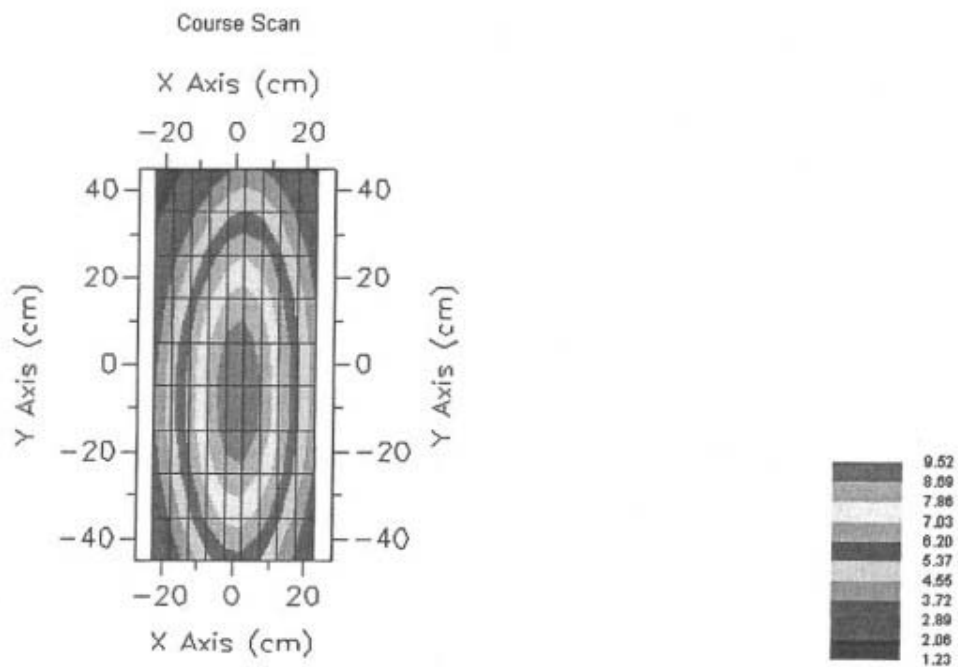
▶ MARKER 1
0.838000 GHz
52.440 Ω
4.834 $j\Omega$

MARKER TO MAX
MARKER TO MIN

MARKER READOUT
FUNCTIONS

System Validation Results Using the Electrically Calibrated Dipole

Head Tissue Frequency	1 Gram	10 Gram	Peak Above Feed Point
835 MHz	9.33	6.42	15.0



Test Equipment

The test equipment used during Probe Calibration, manufacturer, model number and, current calibration status are listed and located on the main APREL server R:\NCL\Calibration Equipment\Instrument List May 2003

[Handwritten signature]

[Handwritten signature]

Appendix F – Phantom Calibration Data Sheets

NCL CALIBRATION LABORATORIES

Calibration File No.: RFE-273

CERTIFICATE OF CALIBRATION

It is certified that the equipment identified below has been calibrated in the
NCL CALIBRATION LABORATORIES by qualified personnel following recognized
procedures and using transfer standards traceable to National Standards.

Thickness of the UniPhantom is 2 mm \pm 10%
Pinna thickness is 6 mm \pm 10%

Resolution:	0.01 mm	Calibrated to:	0.0 mm
Stability:	OK	Accuracy:	< 0.1 mm

Calibrated By: Karen K. Feb 17/04.

NCL CALIBRATION LABORATORIES

51 SPECTRUM WAY
NEPEAN, ONTARIO
CANADA K2R 1E6

Division of APREL Lab.
TEL: (613) 820-4988
FAX: (613) 820-4161