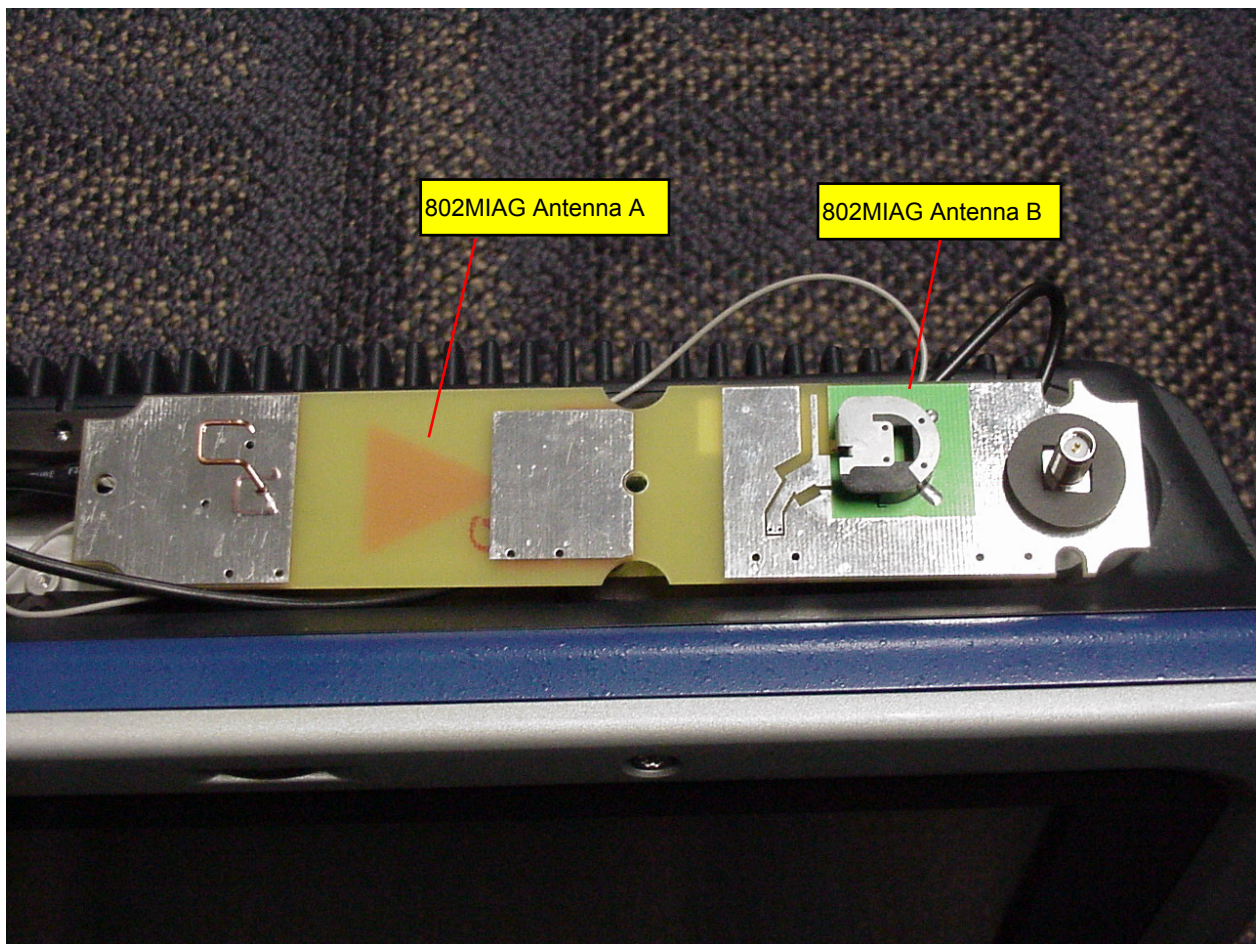


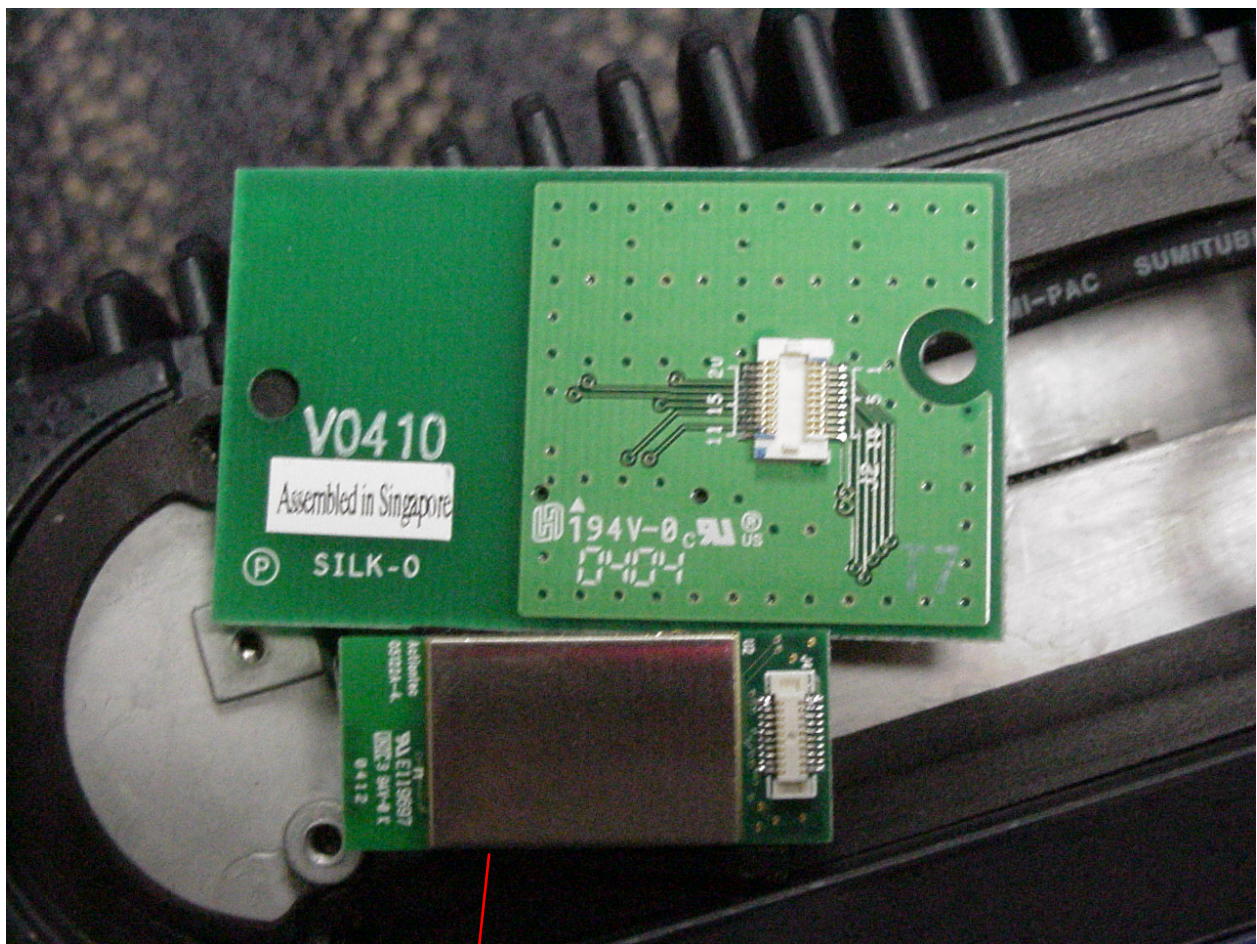
CV60 Showing Top of 802MIAG Antenna Board



CV60 Showing Bottom of 802MIAG Antenna Board



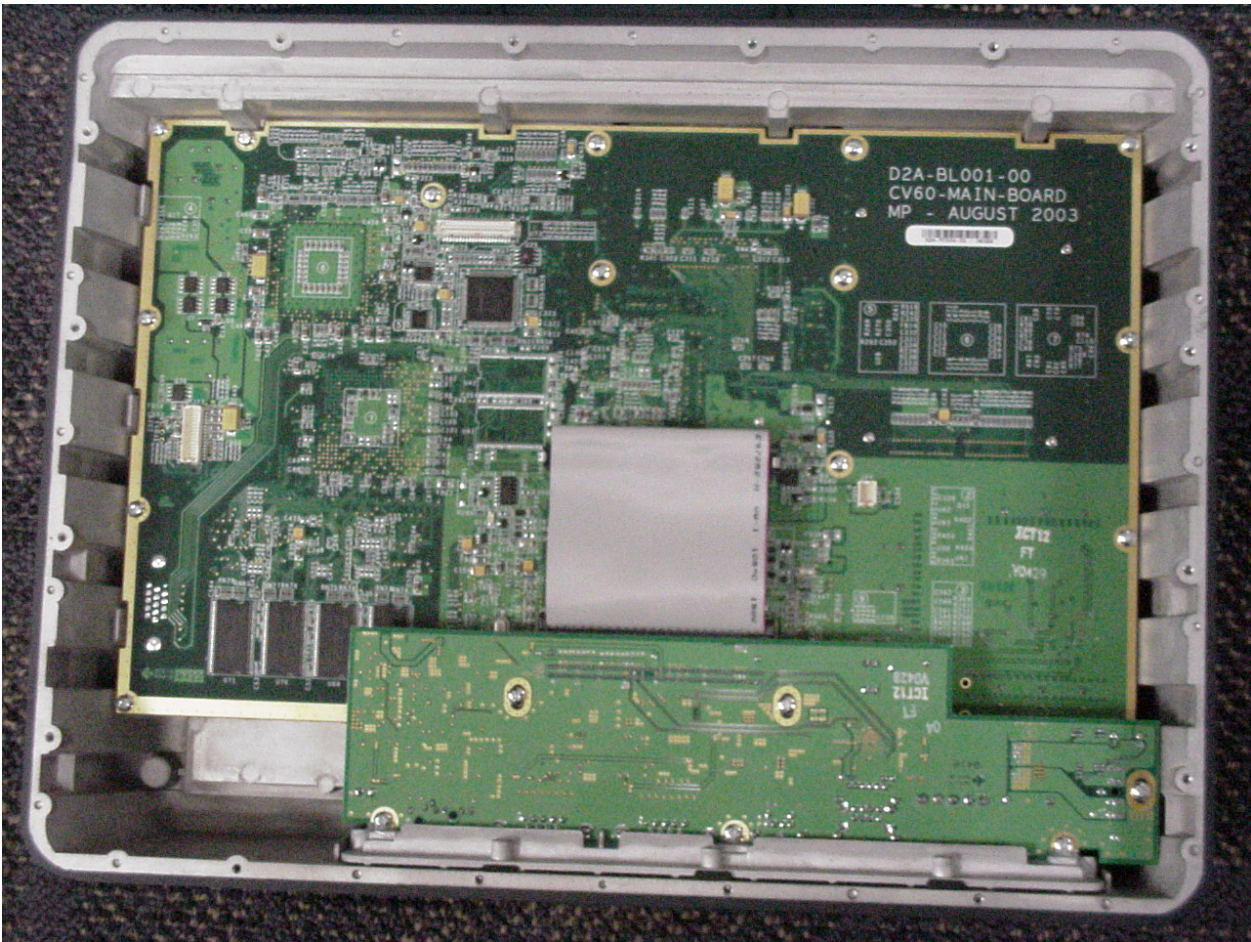
CV60 Showing Placement of Bluetooth Module



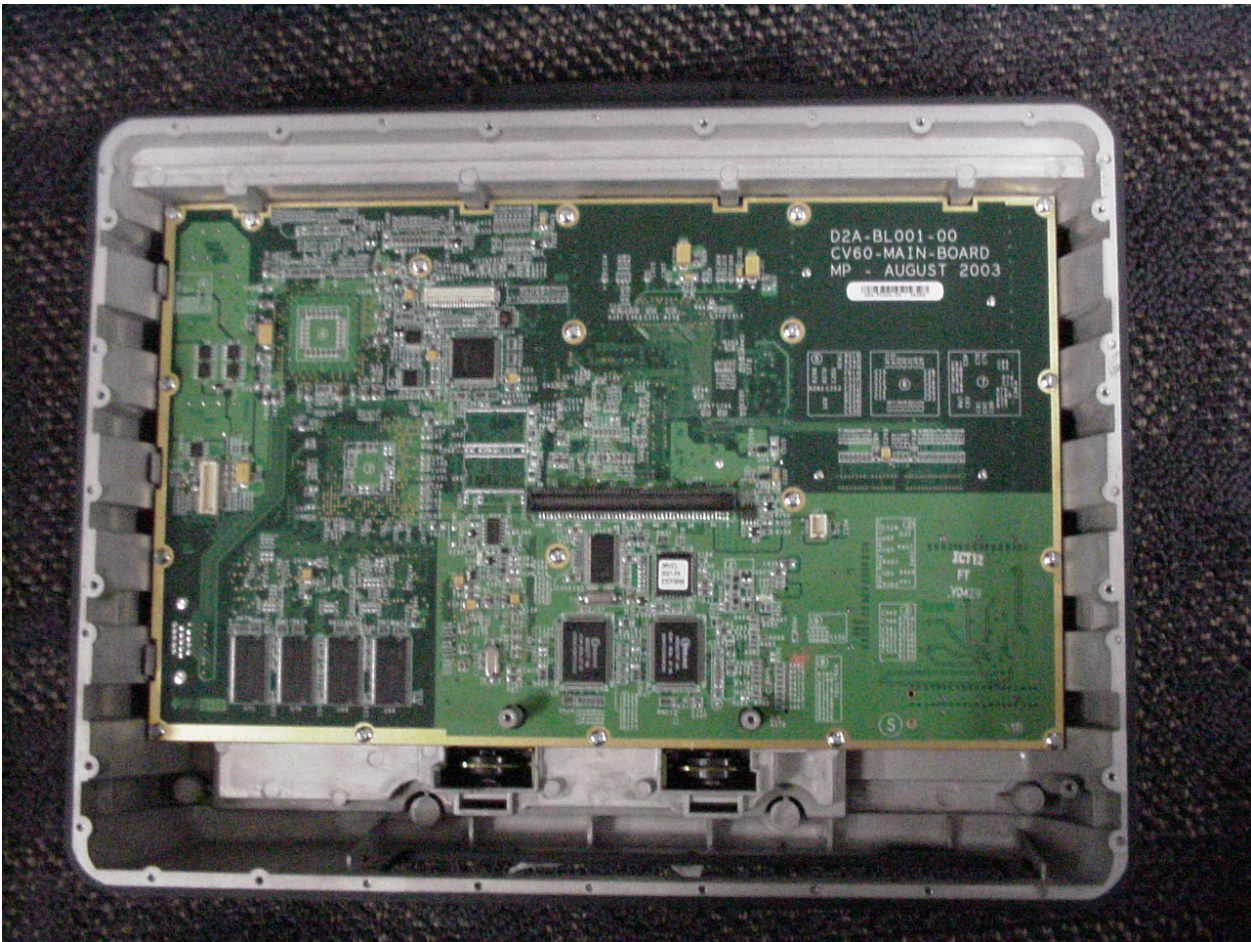
BTM210 Radio Module



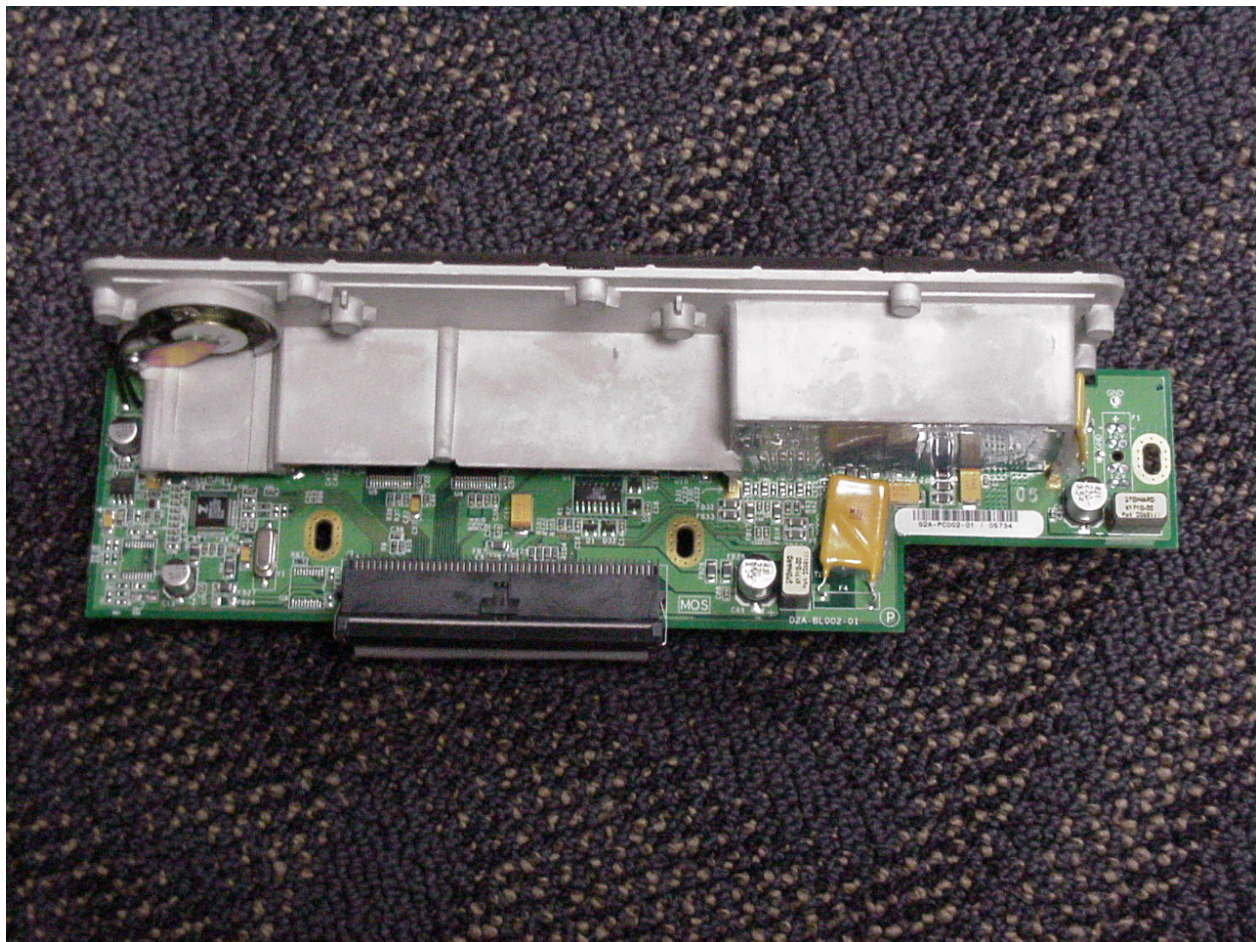
CV60 With Screen Removed



CV60 With Screen and I/O Board Removed



CV60 I/O Board Top View



CV60 I/O Board Bottom View

