

## MEASUREMENT/TECHNICAL REPORT



**Intermec Technologies Corporation**  
**2126**  
**2.4 GHz Spread Spectrum Transmitter**

**REPORT NO: 981030-1**

**DATE: October 30 , 1998**

### APPENDIX B

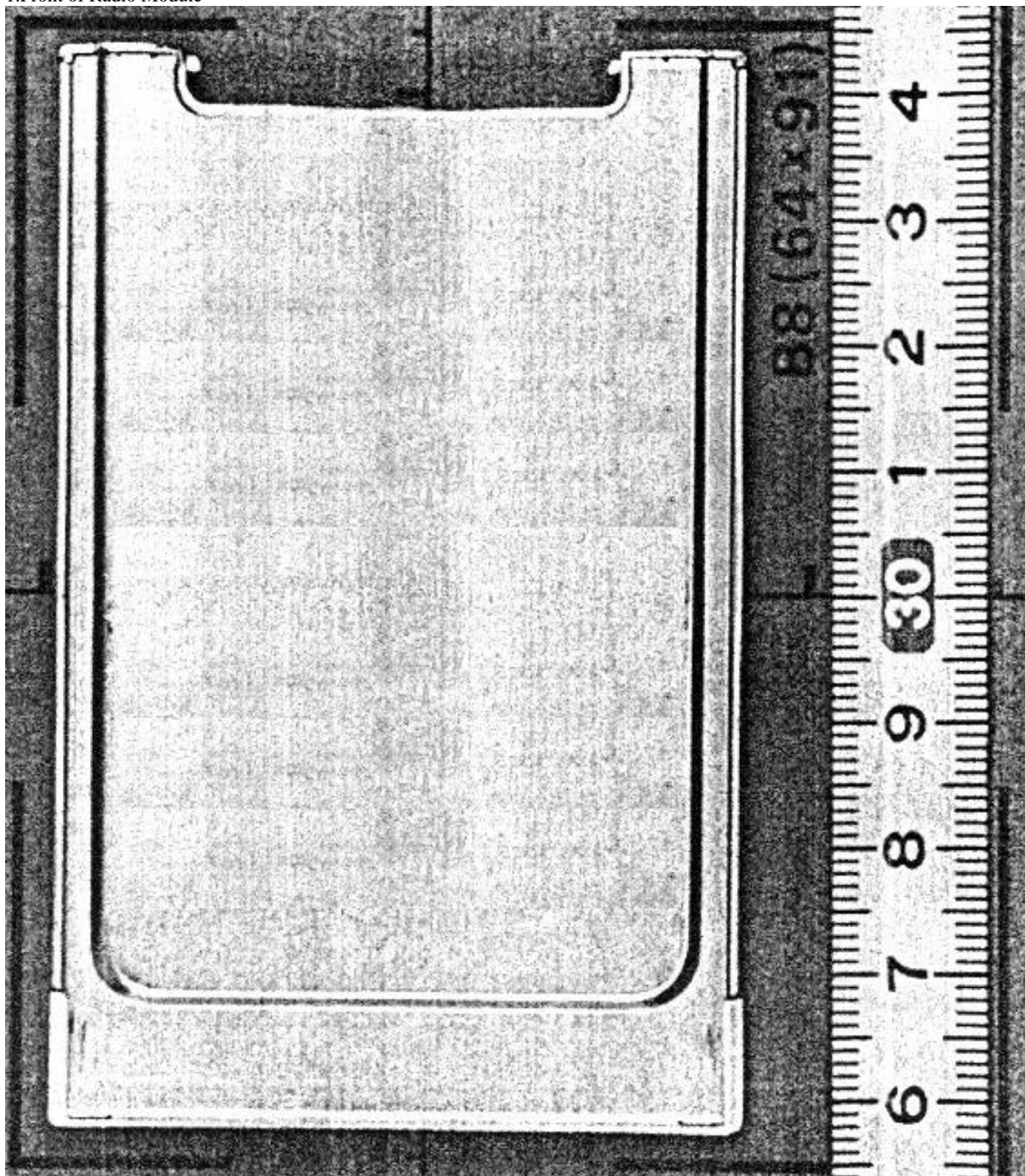
#### EQUIPMENT PHOTOGRAPHS

1. Front of Radio Module
2. Back of Radio Module
3. Top of Radio Module
4. Front of PCB with shields
5. Front of PCB no shields
6. Back of PCB with shield
7. Back of PCB no shield

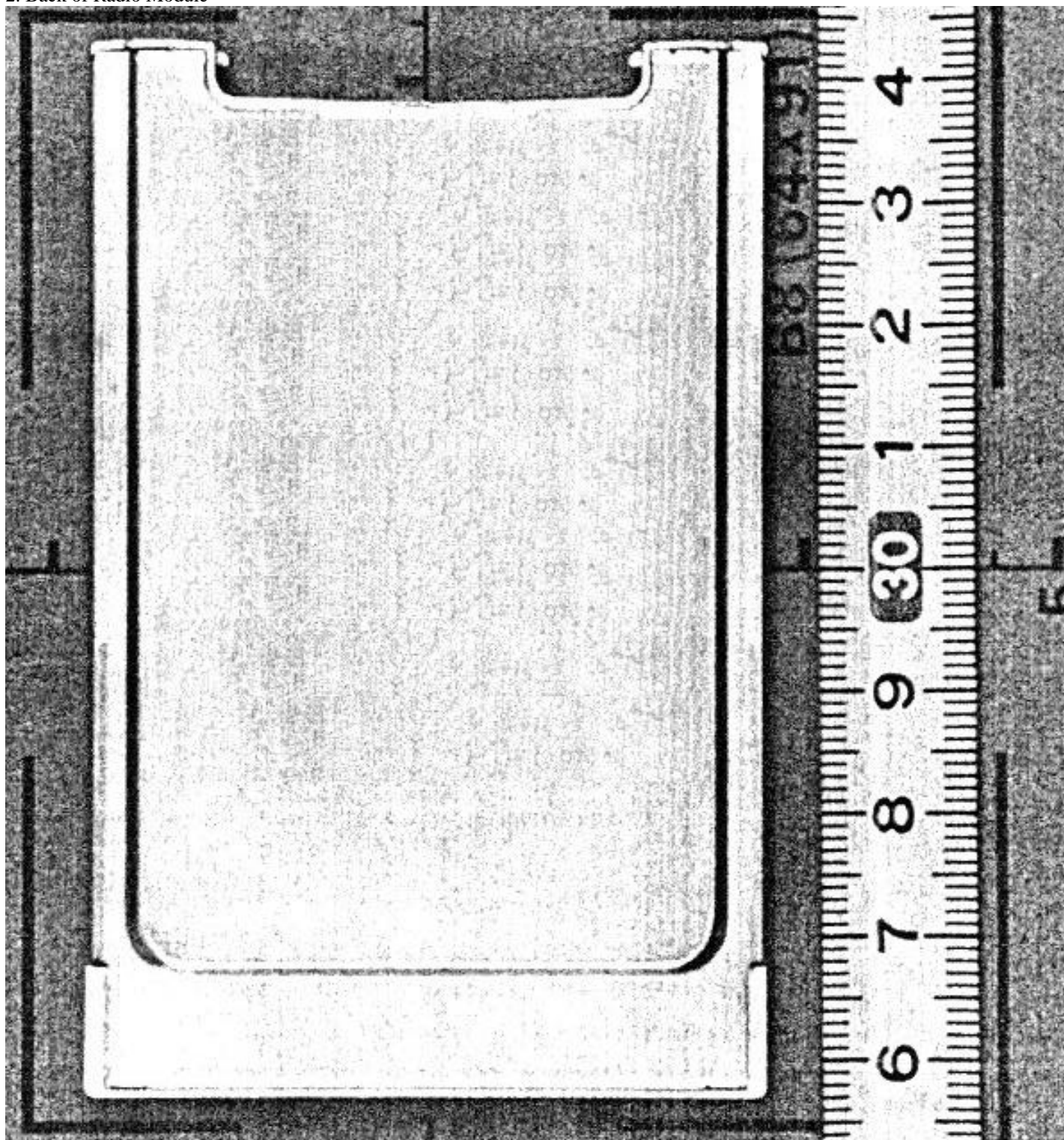
#### ANTENNA PHOTOGRAPHS

Photo #	Disc	Manufacturer	Part Number	Gain	VSWR
8.	Patch Integral	Radiall	R380.500.005	4.5 dBi	2.1
9.	Omni High Gain	Mobile Mark	OD9-2400	9 dBi	2:1
10.	Panel	Larsen	063366	14 dBi	1.5:1
11.	Yagi	Cushcraft	063365	15 dBi	1.5:1
12.	Omni	Centurion	066147	1 dBi	
13.	Omni	Cushcraft	S2403BP	3 dBi	1.5:1
14.	Omni	Mobile Mark	OD6-2400	6 dBi	2:1
15.	Omni High Gain	Tecom	505040	8 dBi	2:1
16.	Patch	Tecom	505022	5 dBi	2:1
17.	Patch	Cushcraft	S2406PL	6 dBi	1.5:1
18.	Patch Bidirectional	Xertex	245BD5W	6 dBi	1.5:1
19.	Patch	Huber & Suhner	1324.19.0002	8.5 dBi	1.5:1
20.	Patch	Xertex	245LD9W	9 dBi	1.5:1

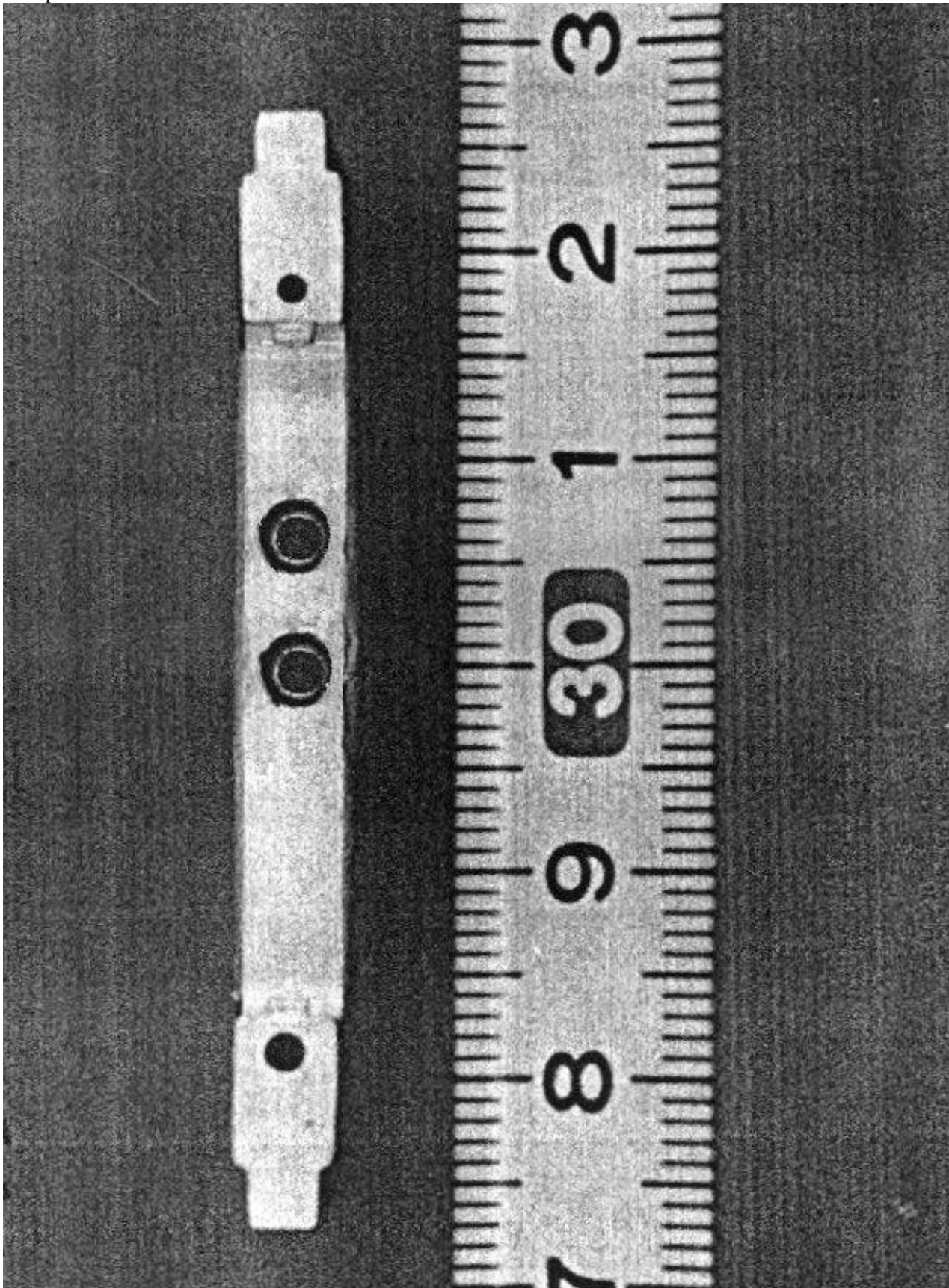
1.Front of Radio Module



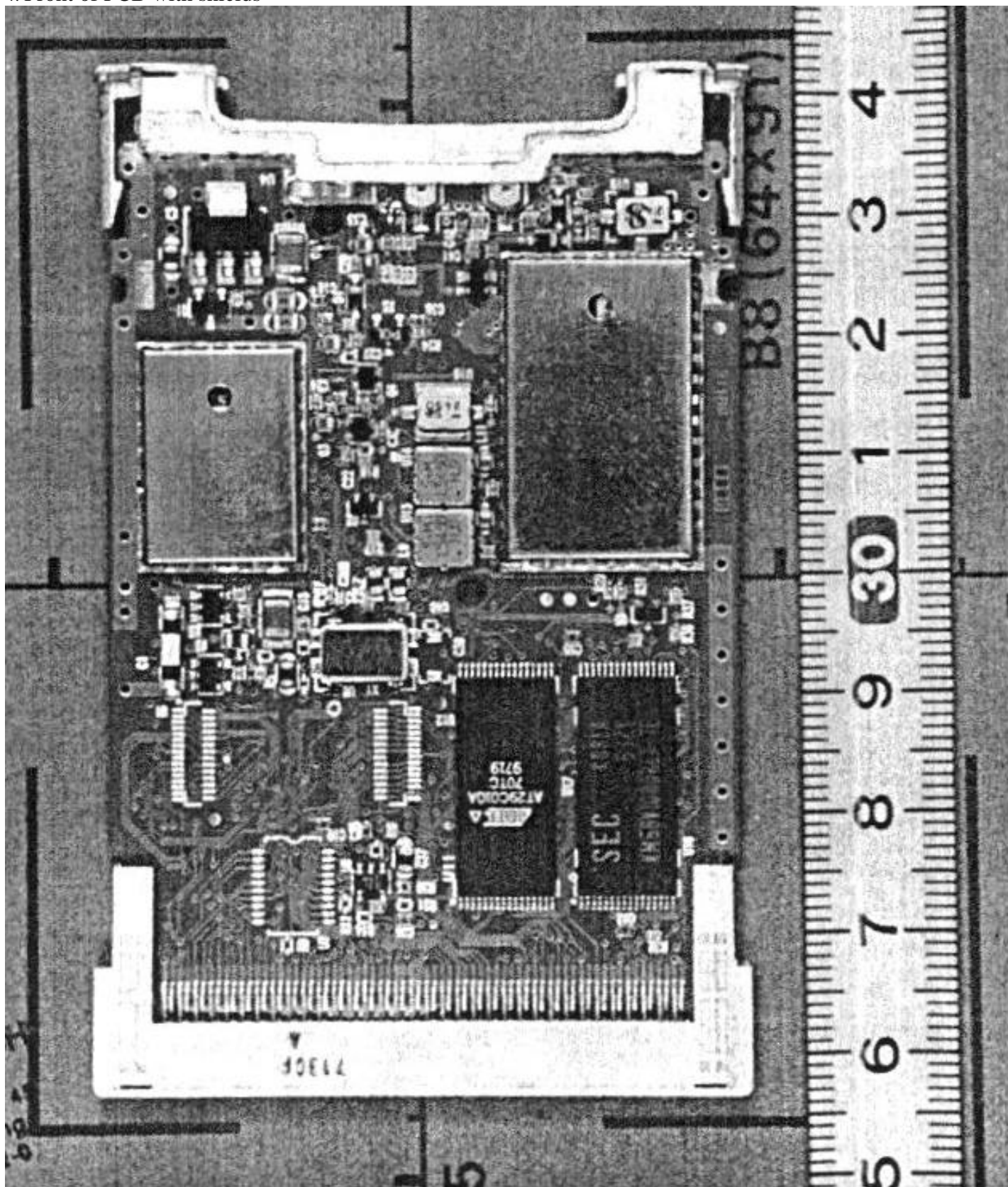
2. Back of Radio Module



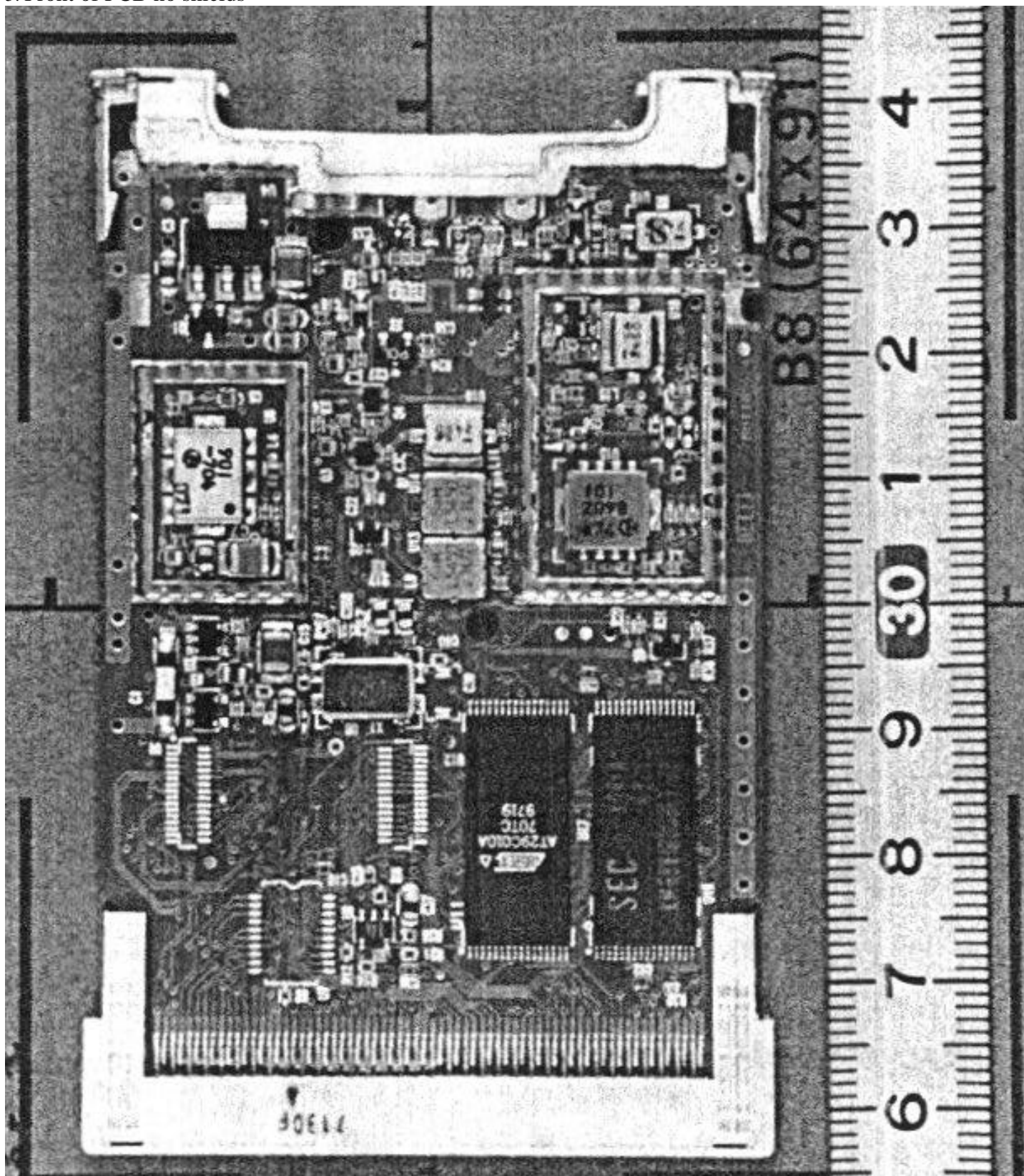
3. Top of Radio Module



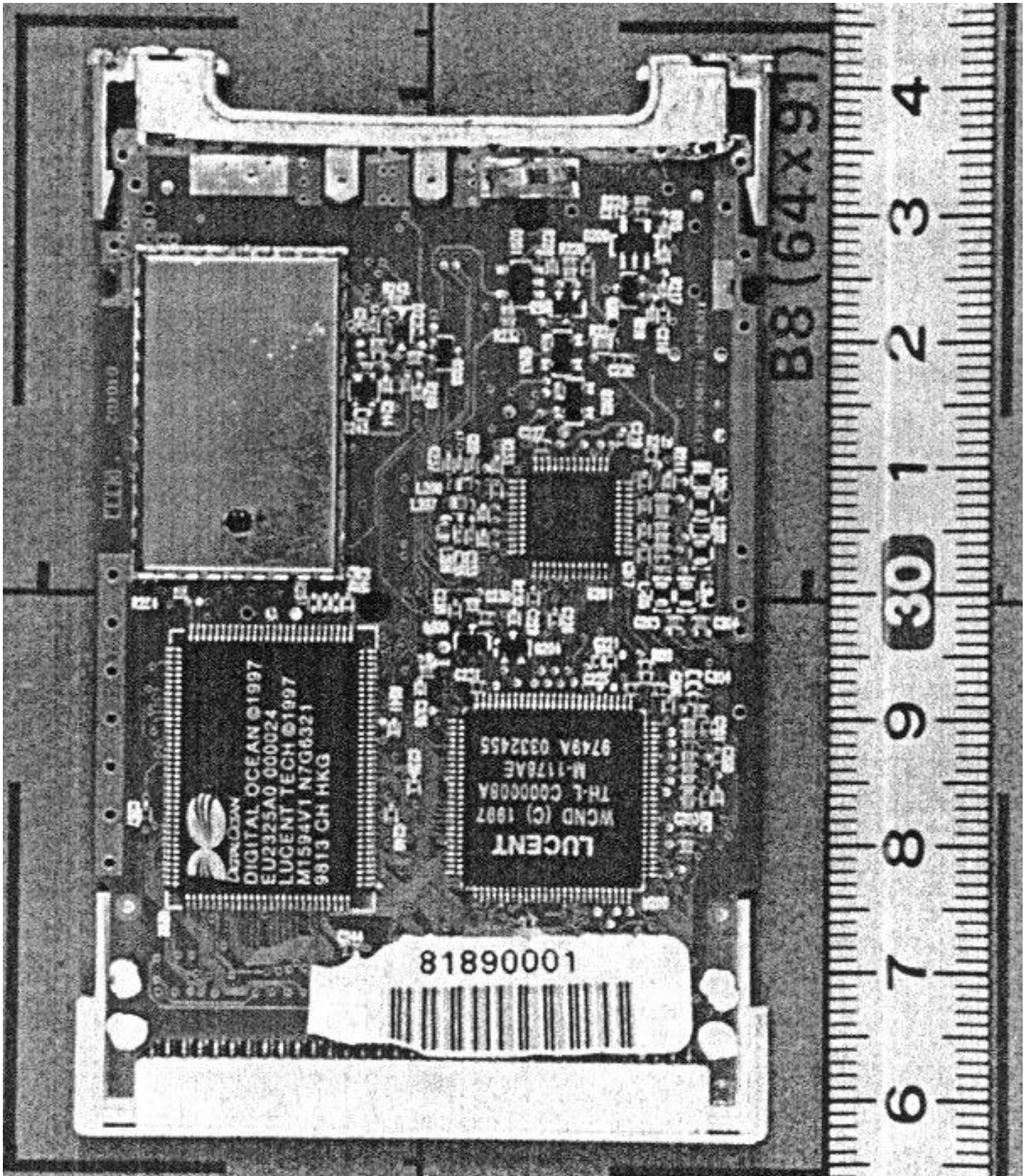
4. Front of PCB with shields



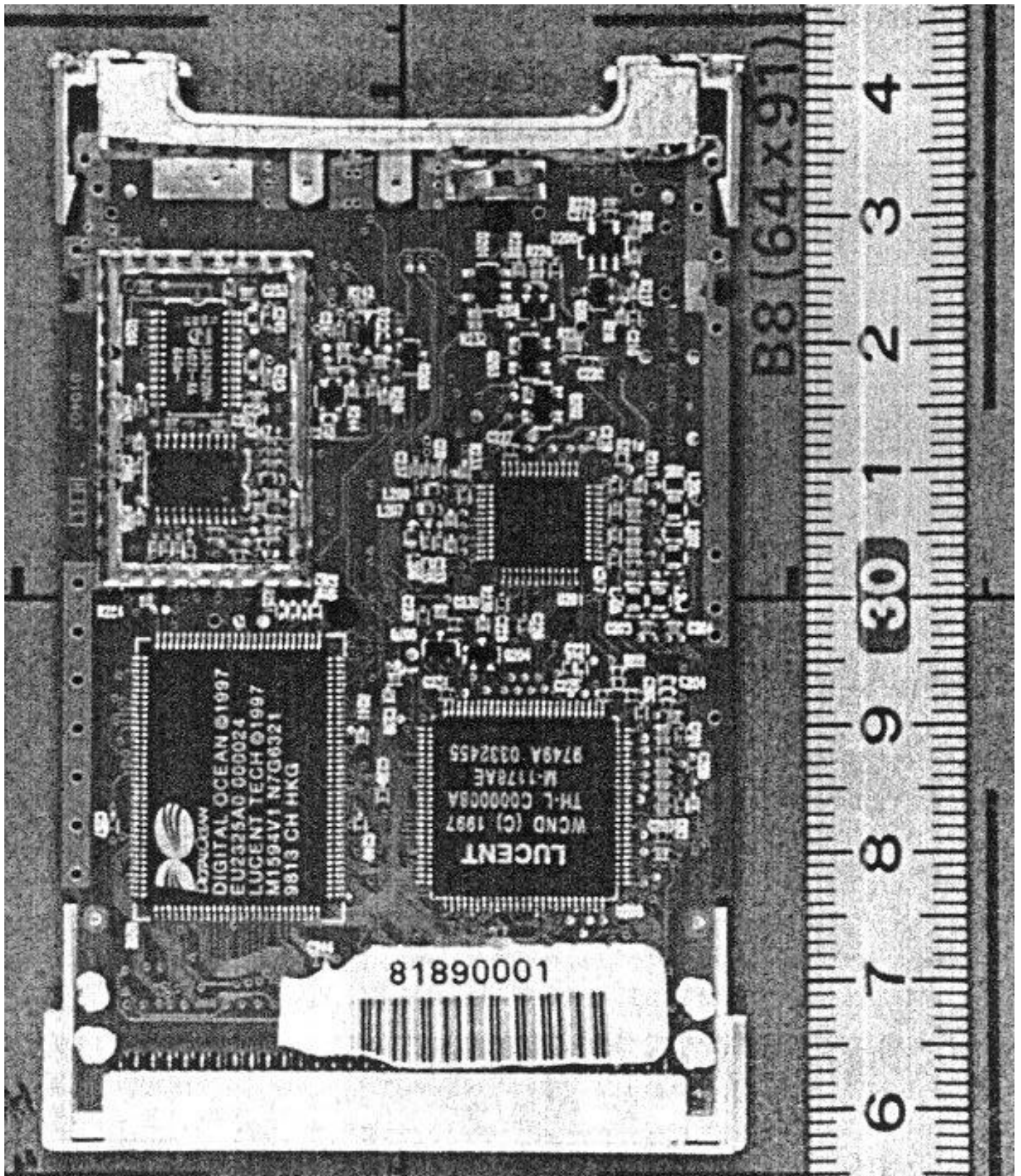
5. Front of PCB no shields



6. Back of PCB with shield

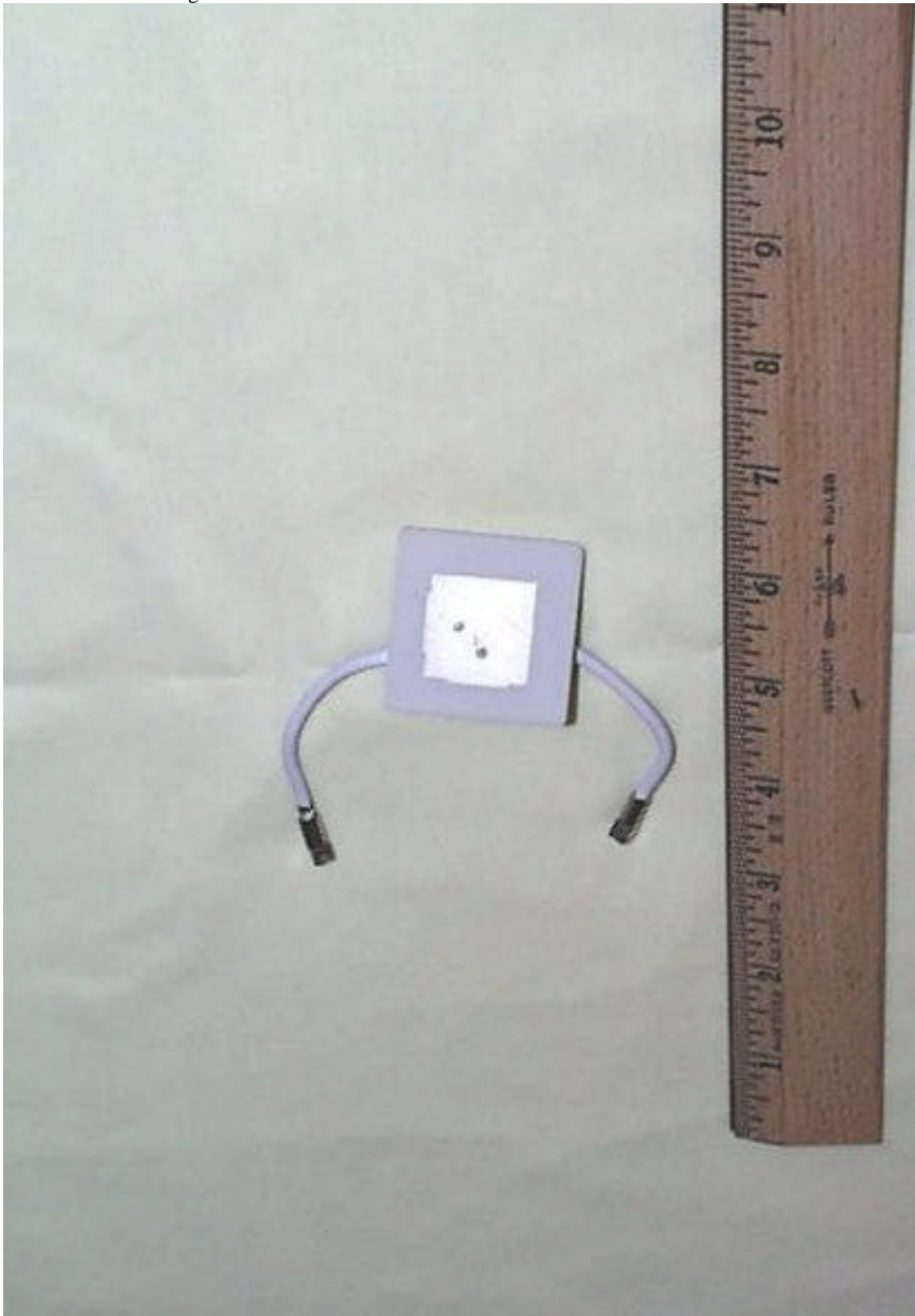


7. Back of PCB no shield

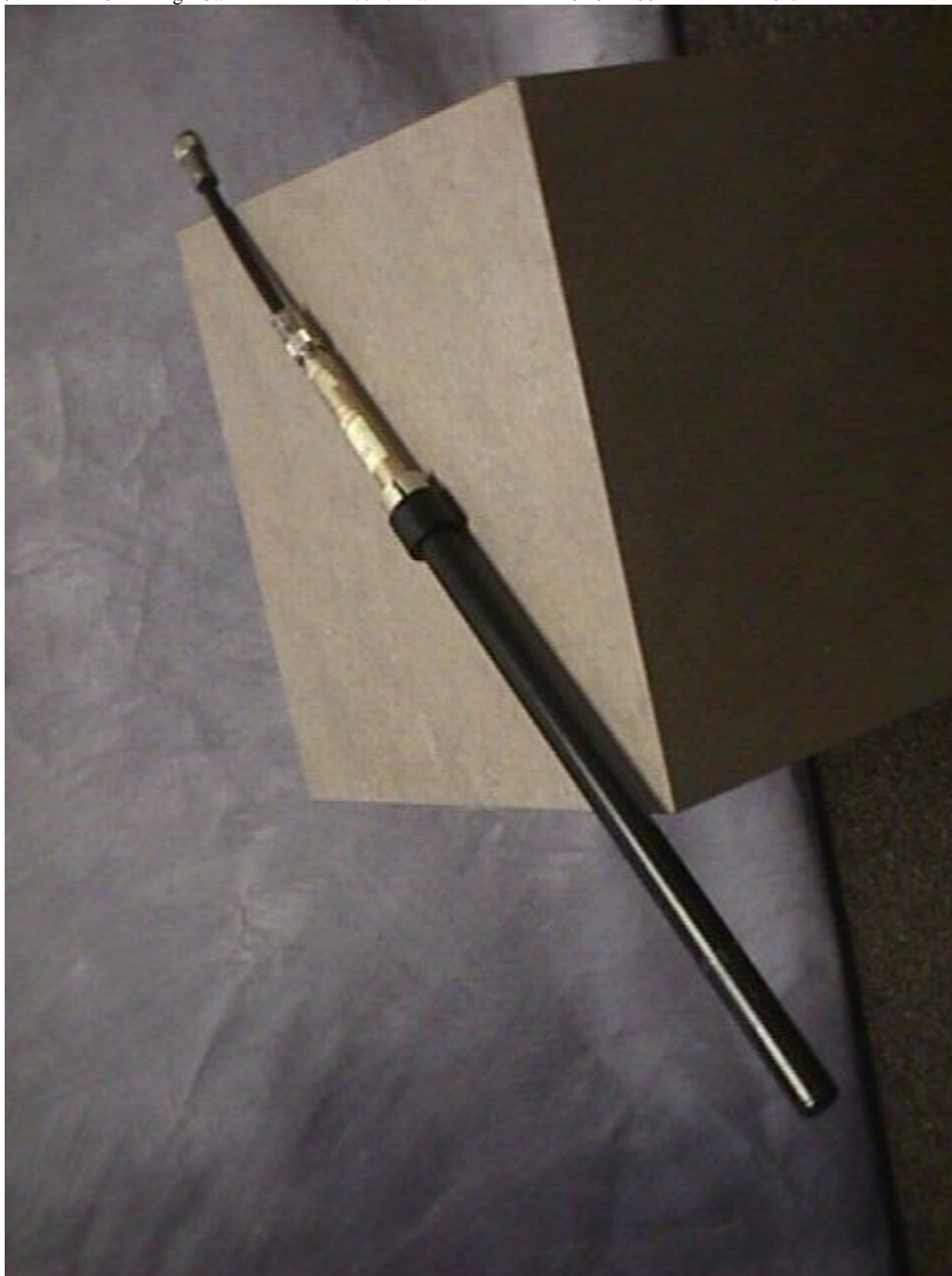




8. Patch Integral Radiall R380.500.005 4.5 dBi 2.1



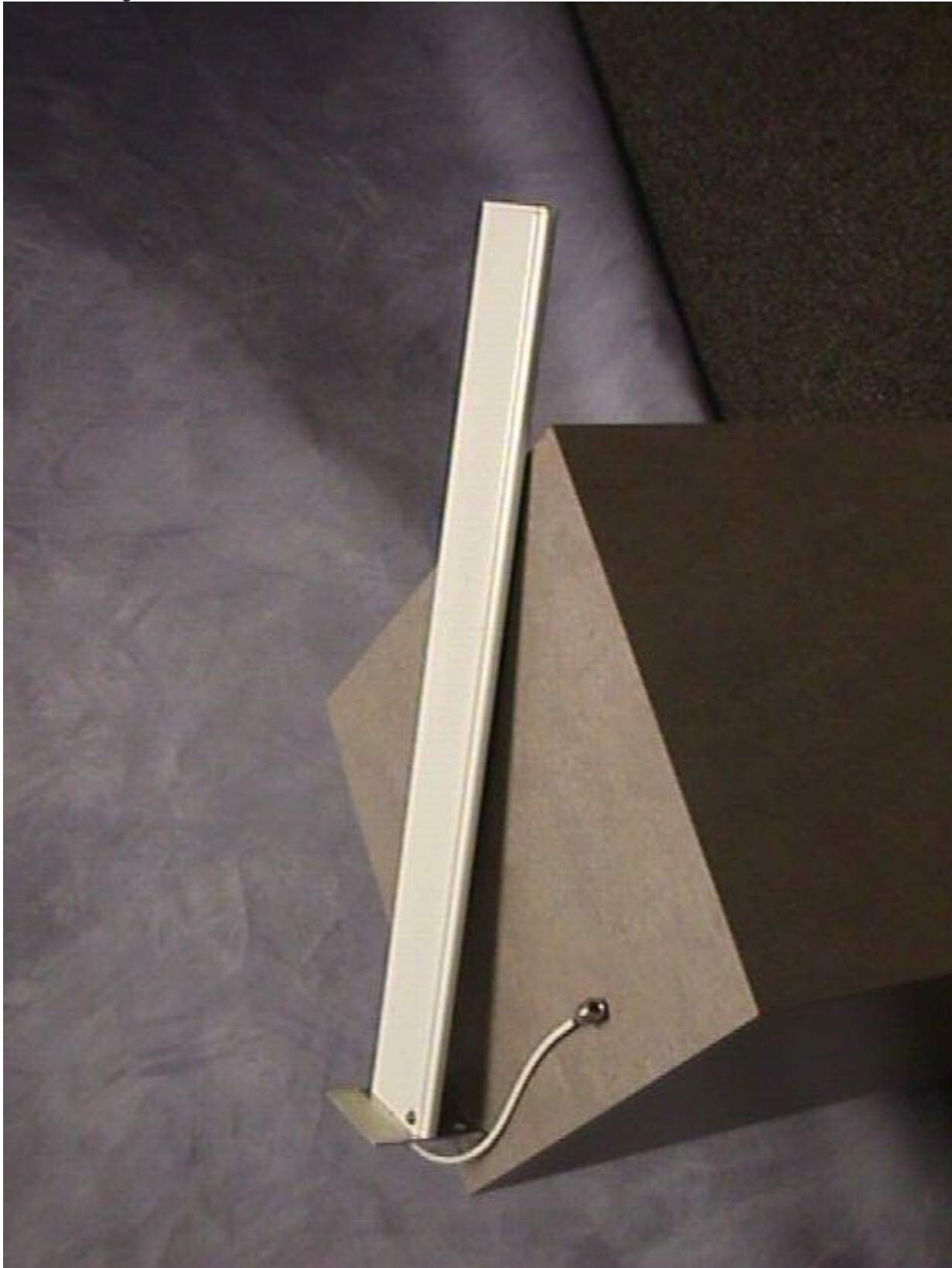
9. Omni High Gain Mobile Mark OD9-2400 9 dBi 2:1



10. Panel Larsen 063366 14 dBi 1.5:1



11. Yagi Cushcraft 063365 15 dBi 1.5:1



12. Omni Centurion 066147 1 dBi



13. Omni Cushcraft S2403BP 3 dBi 1.5:1



14. Omni Mobile Mark OD6-2400 6 dBi 2:1



15. Omni High Gain Tecom 505040 8 dBi 2:1





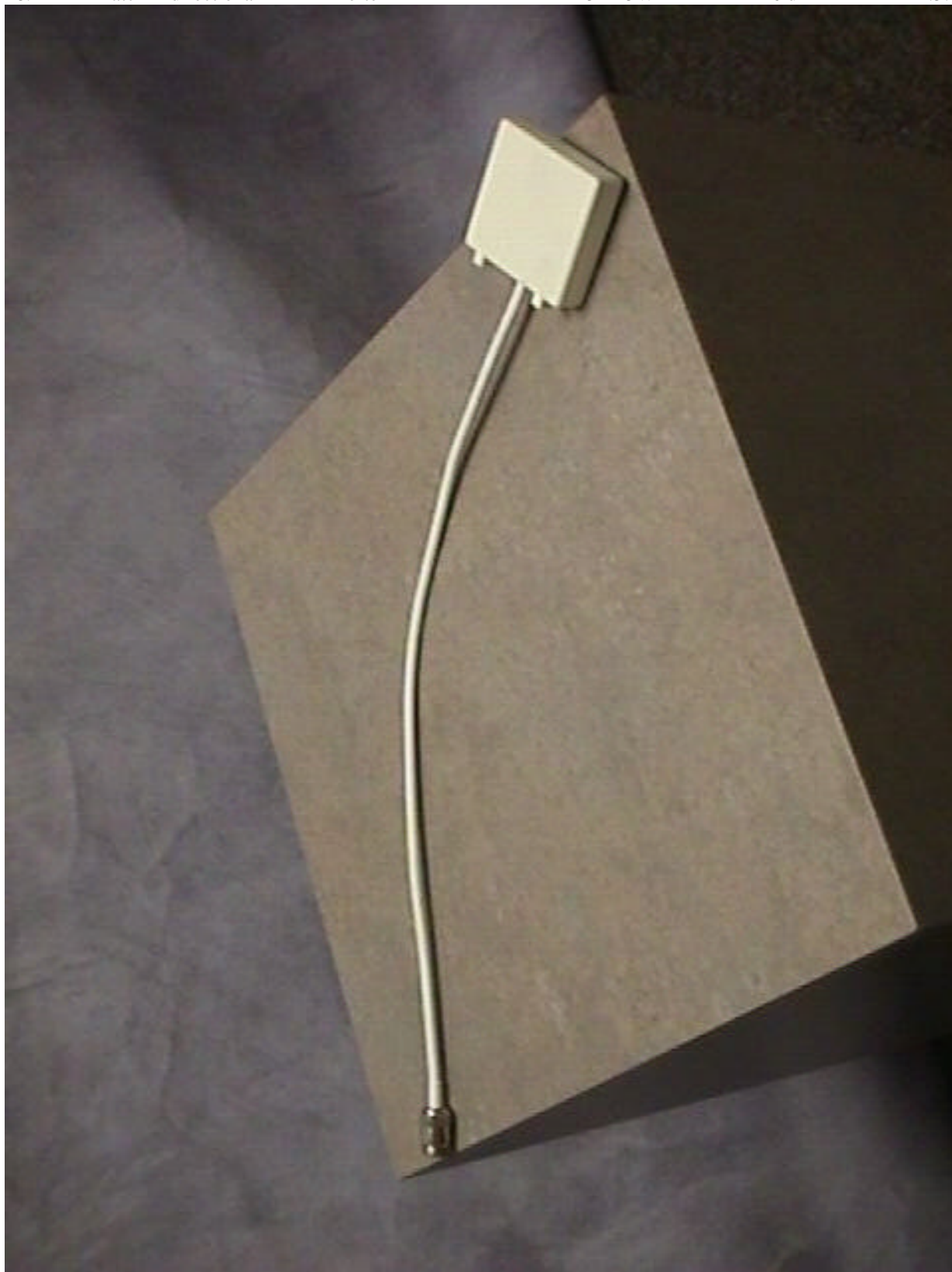
16. Patch Tecom 505022 5 dBi 2:1



17. Patch Cushcraft S2406PL 6 dBi 1.5:1



18. Patch Bidirectional Xertex 245BD5W 6 dBi 1.5:1



19. Patch Huber & Suhner 1324.19.0002 8.5 dBi 1.5:1



20. Patch Xertex 245LD9W 9 dBi 1.5:1

