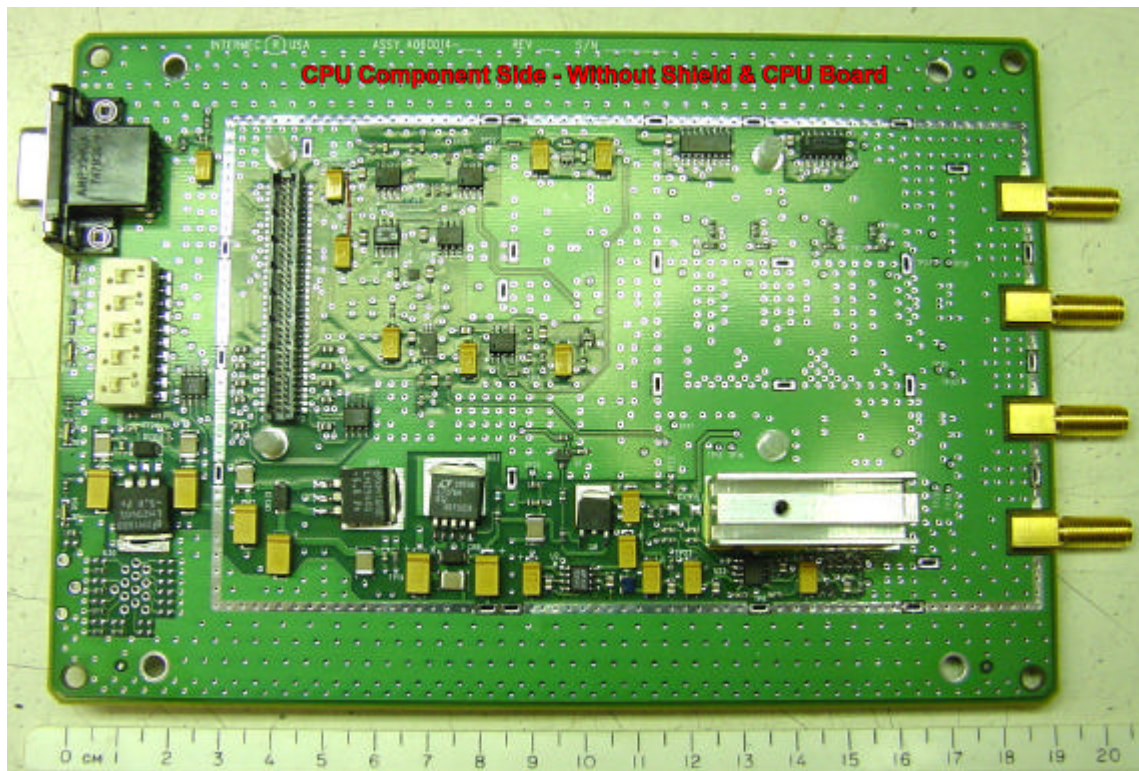
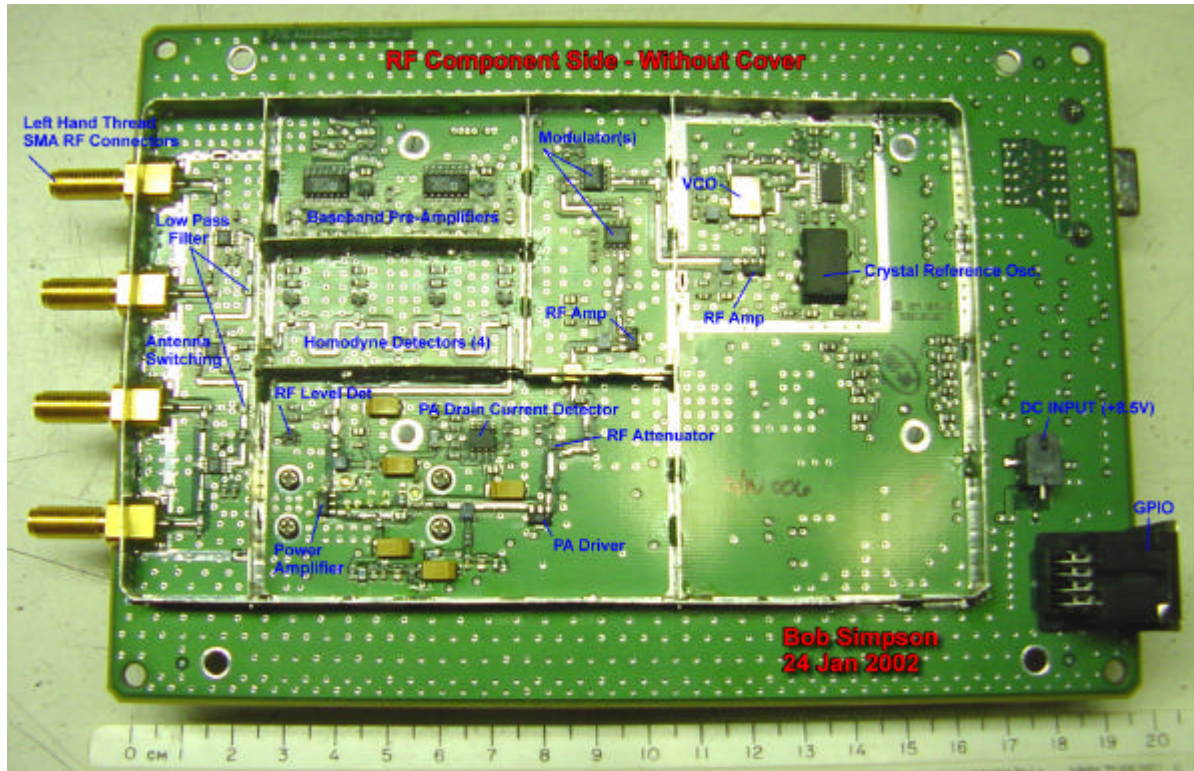


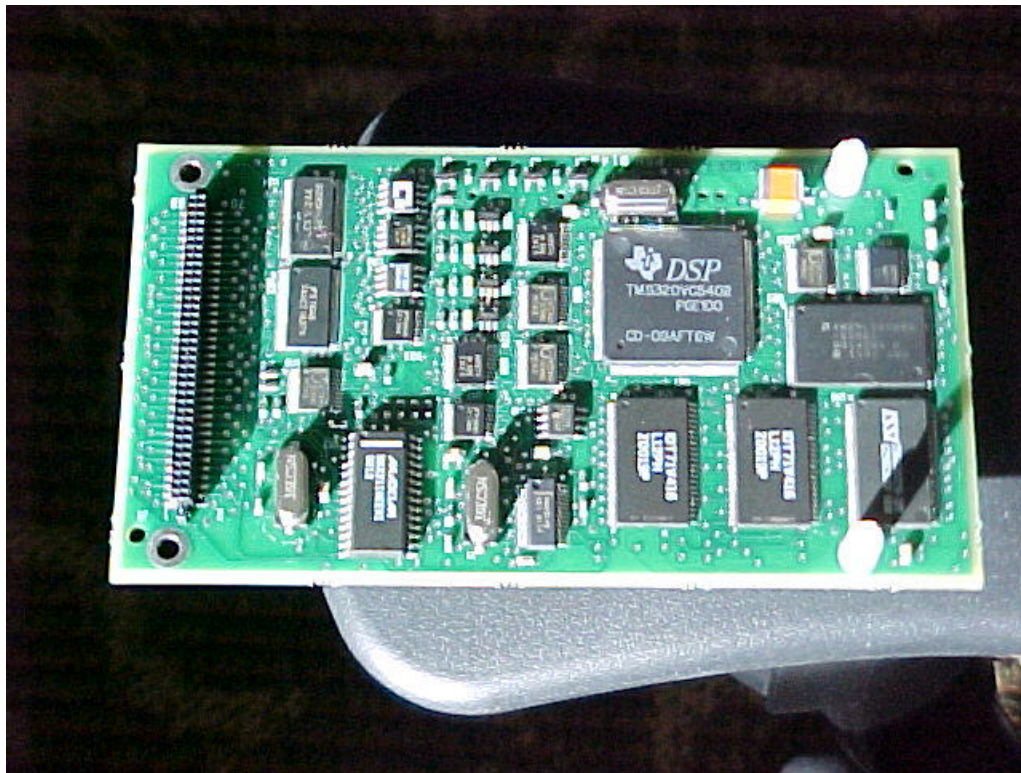
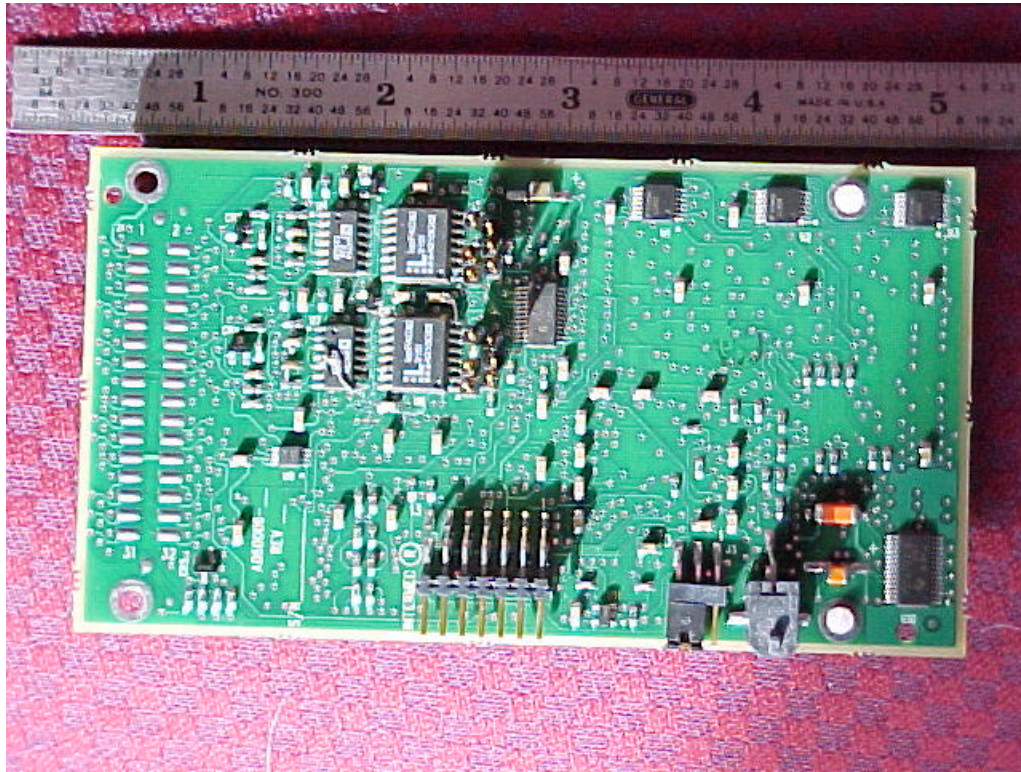
Photographs of printed circuit boards and component locations for ITRM91501X04.



ROGERS LABS, INC.  
4405 W. 259th Terrace  
Louisburg, KS 66053  
Phone/Fax: (913) 837-3214

Intermec Technologies Corporation  
MODEL: ITRM91501X04  
Test #: 0200205 FCCID#: EHA-RM91501X04  
Test to: FCC Parts 2 and 15

DSP boards



ROGERS LABS, INC.  
4405 W. 259th Terrace  
Louisburg, KS 66053  
Phone/Fax: (913) 837-3214

Intermec Technologies Corporation  
MODEL: ITRM91501X04  
Test #: 0200205      FCCID#: EHA-RM91501X04  
Test to: FCC Parts 2 and 15