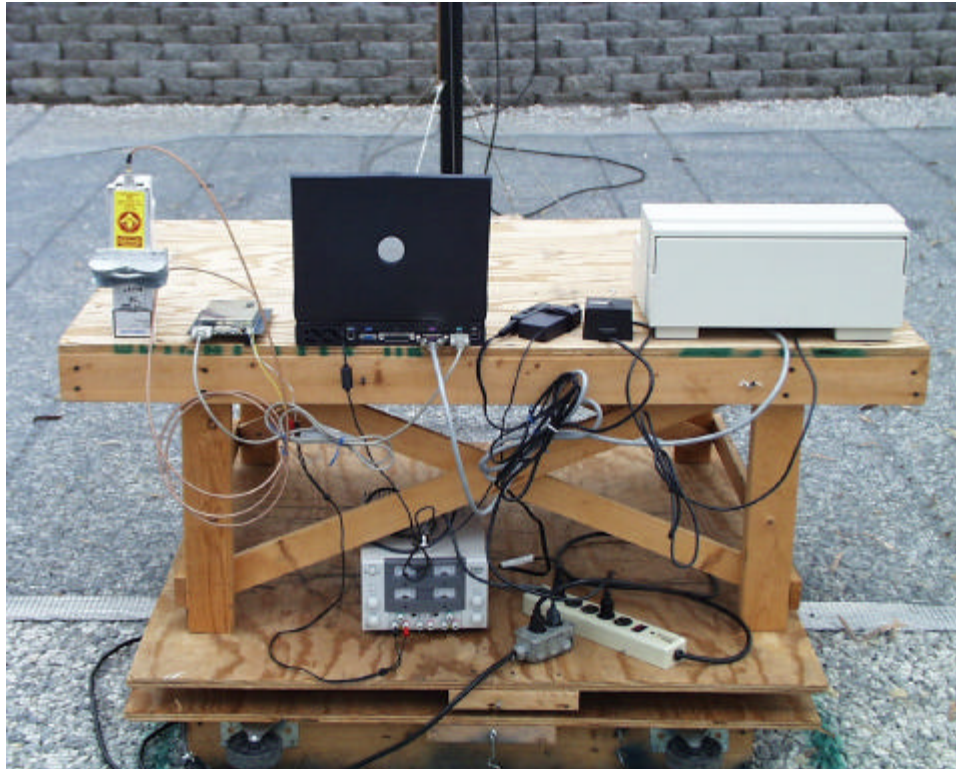
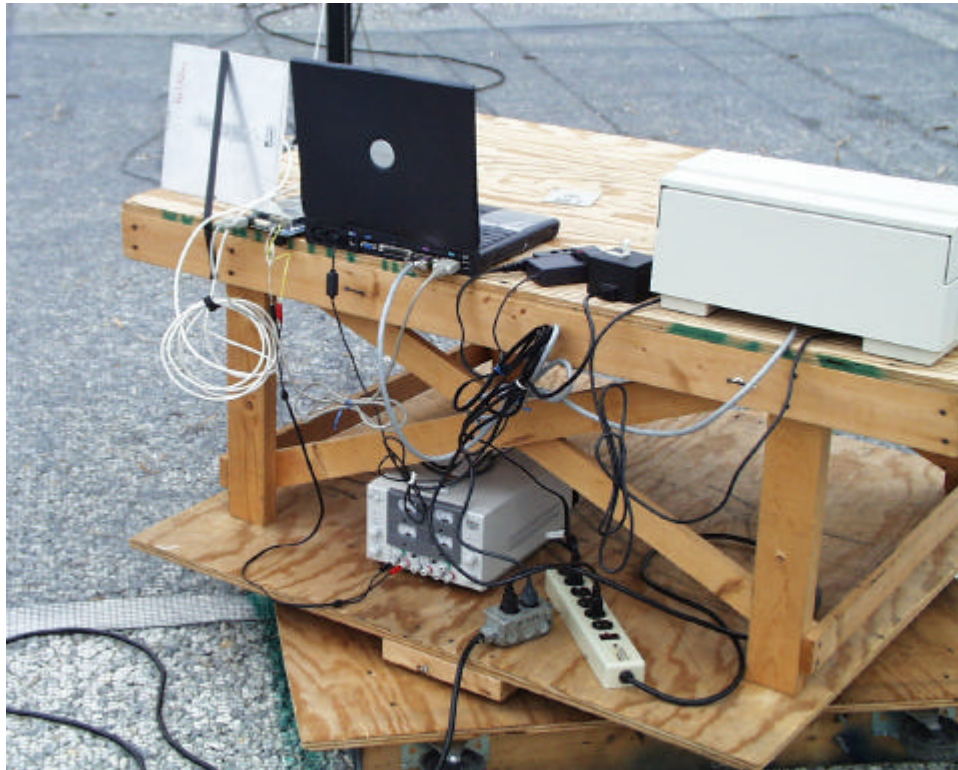


Photographs of test setup for ITRM91501X04.



ROGERS LABS, INC.
4405 W. 259th Terrace
Louisburg, KS 66053
Phone/Fax: (913) 837-3214

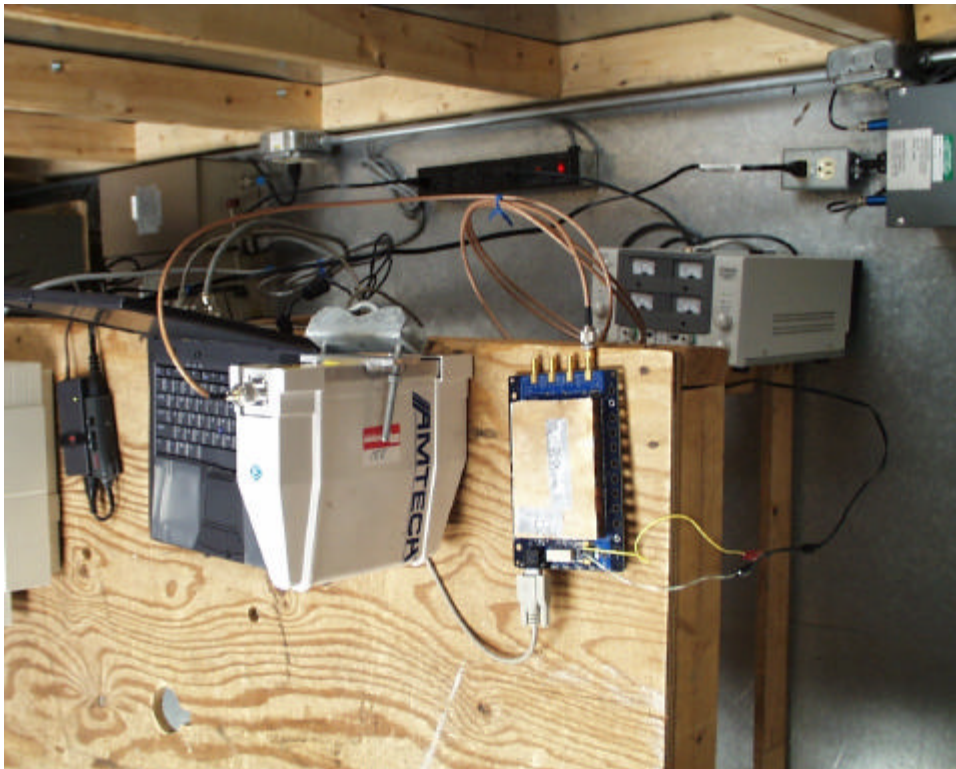
Intermec Technologies Corporation
MODEL: ITRM91501X04
Test #: 020205 FCCID#: EHA-RM91501X04
Test to: FCC Parts 2 and 15



ROGERS LABS, INC.
4405 W. 259th Terrace
Louisburg, KS 66053
Phone/Fax: (913) 837-3214

Intermec Technologies Corporation
MODEL: ITRM91501X04
Test #: 020205 FCCID#: EHA-RM91501X04
Test to: FCC Parts 2 and 15

Line Conducted emissions test setup.



ROGERS LABS, INC.
4405 W. 259th Terrace
Louisburg, KS 66053
Phone/Fax: (913) 837-3214

Intermec Technologies Corporation
MODEL: ITRM91501X04
Test #: 020205 FCCID#: EHA-RM91501X04
Test to: FCC Parts 2 and 15