

## Antenna Information

Ant. System gain = (antenna gain) - (cable loss)

Intermec P/N: 063363-003

Supplier P/N: Laird-Cushcraft, S2403BP 802.11b/g

Description: Dipole LP

Gain (dBi): 5.0                      Cable Loss (dB): 0.4                      Ant. System gain = 4.6

Intermec P/N: 067262

Supplier P/N: Laird-Centurion, CAF95989 802.11b/g

Description: Panel LP

Gain (dBi): 5.0                      Cable Loss (dB): 0.4                      Ant. System gain = 4.6

Intermec P/N: 805-833-001

Supplier P/N: Laird, MAF 94367 dual band

Description: Dipole LP

802.11b/g Gain (dBi): 2.4                      Cable Loss (dB): 0.4                      Ant. System gain = 2.0

802.11a Gain (dBi): 3.8                      Cable Loss (dB): 0.8                      Ant. System gain = 3.0

Intermec P/N: 805-834-001

Supplier P/N: Joymax, TWX-145XRTXX dual band

Description: Dipole LP

802.11b/g Gain (dBi): 2.4                      Cable Loss (dB): 0.4                      Ant. System gain = 2.0

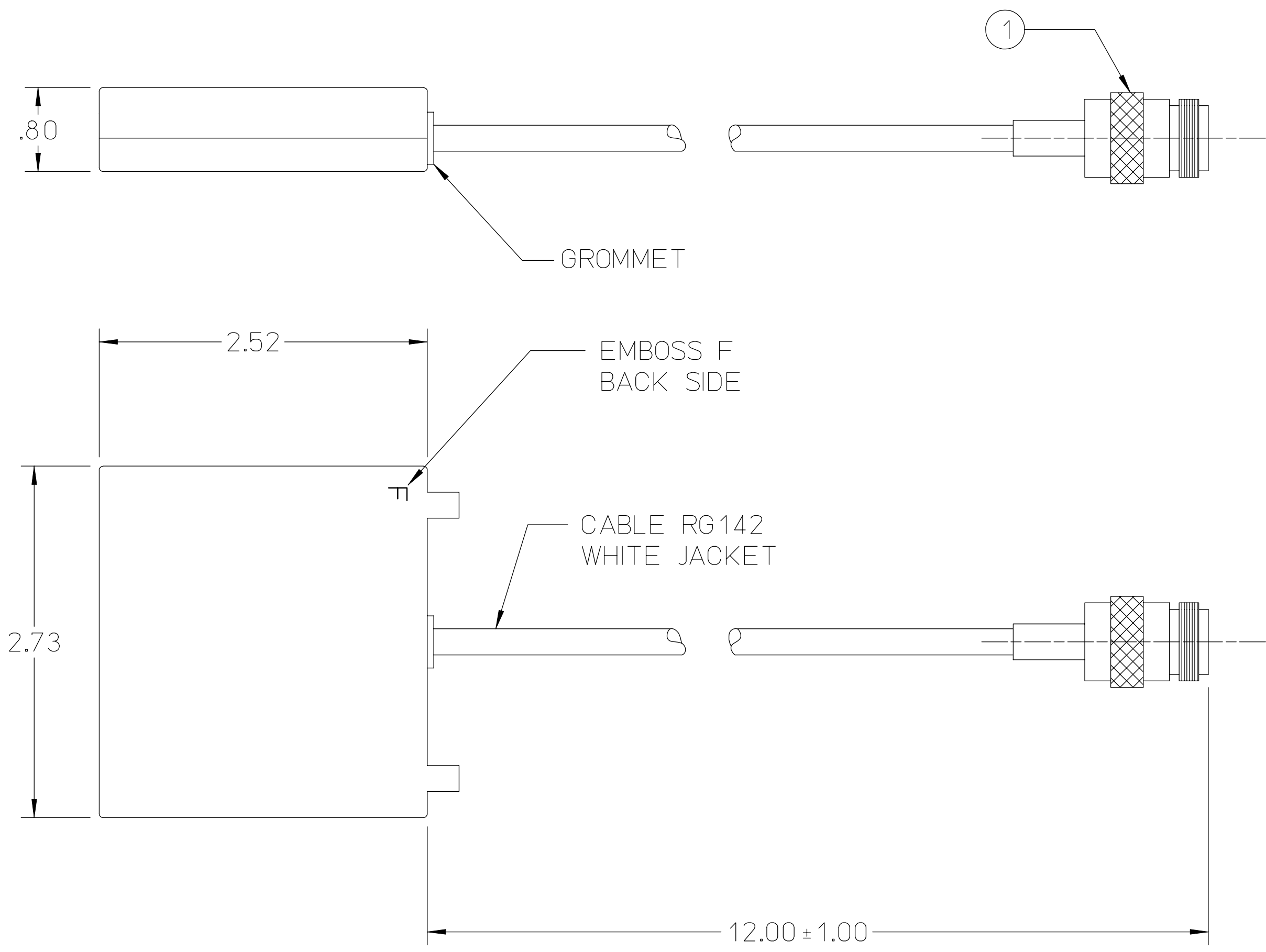
802.11a Gain (dBi): 3.8                      Cable Loss (dB): 0.8                      Ant. System gain = 3.0

APPROVED SOURCE(S) OF SUPPLY	
SUPPLIER	PART NUMBER
1. CENTURION INTL	CAF95989
2.	
3.	
4.	
5.	
6.	

REVISIONS			
REV	DESCRIPTION	DATE	DRAWN & APPROVED
B	-001 RELEASED AT REV B		
C	-001 PER ECN 102232	3-7-01	G.RAVEN GMO
D	-001 PER ECN 300031	1-18-04	G.OPSTAD GAR

D  
C  
B  
A

D  
C  
B  
A




Connector type: RP N-Female

- NOTES: UNLESS OTHERWISE SPECIFIED
- REFER TO THE MANUFACTURER'S SPECIFICATIONS FOR COMPLETE DESIGN PARAMETERS.
  - BAG PARTS AND MARK BAG WITH 067262 TO WHICH MANUFACTURED PER SPECIFICATION 606427. DO NOT MARK DASH NUMBER.
  - CHANGES REQUIRE SAC APPROVAL.
  - SPECIFICATIONS:
    - \* FREQUENCY RANGE: 2400-2500 MHz
    - \* GAIN: 5dBi
    - \* VSWR: 1.8:1
    - \* IMPEDANCE: 50ohms
    - \* AZIMUTH 3 dB BEAMWIDTH: 60°
    - \* ELEVATION 3 dB BEAMWIDTH: 30°
    - \* OPERATING TEMPERATURE: -40°C TO +100°C
    - \* INPUT POWER (MAX): 50 WATTS
  - MOUNTING KIT SUPPLIED.

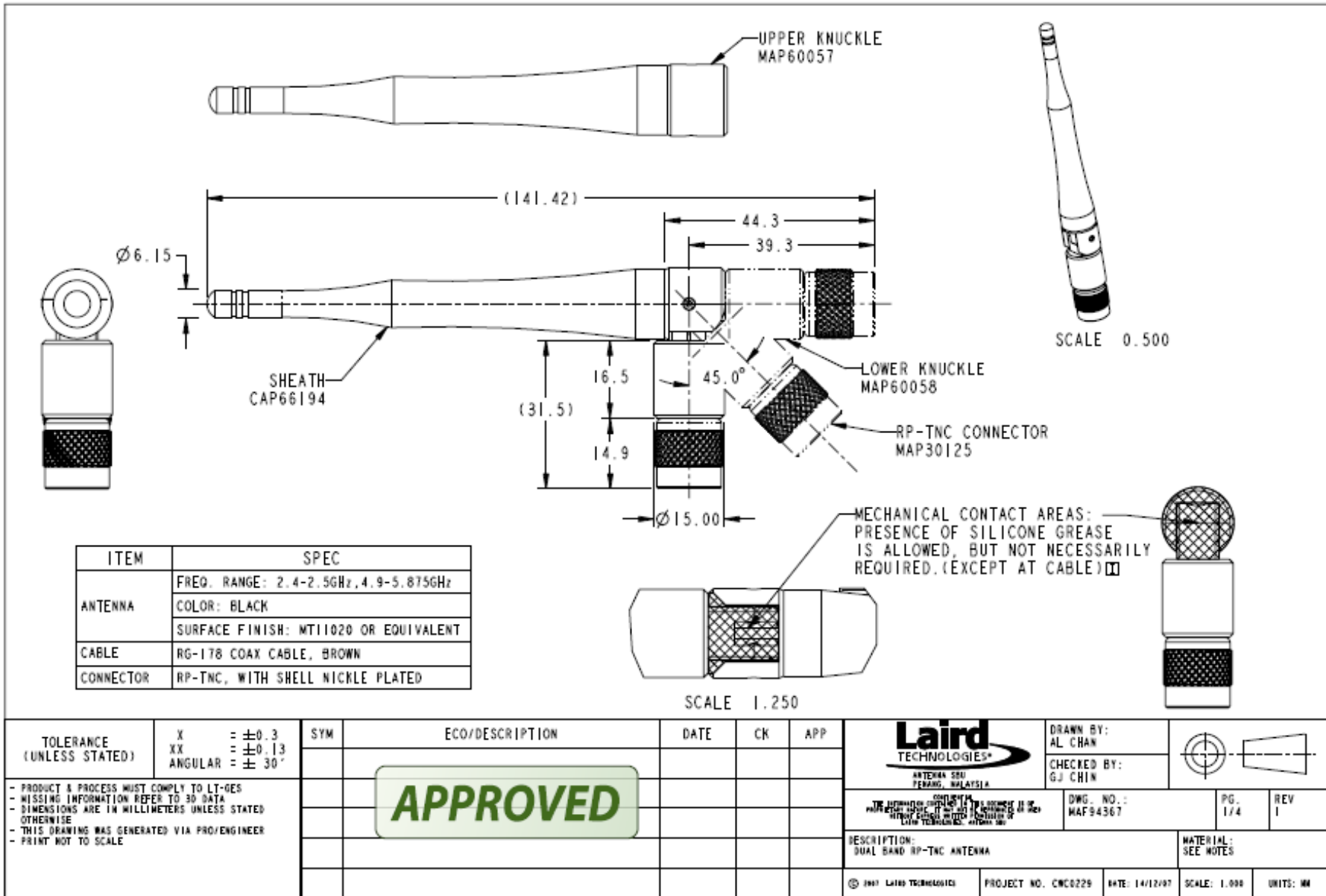
SOURCE CONTROL DRAWING  
SEE SEPARATE PARTS LIST FOR 067262-001

-001

**NOTICE**  
THIS DRAWING SHALL NOT BE DUPLICATED OR USED FOR ANY PURPOSE OTHER THAN THAT FOR WHICH PROVIDED. THE INFORMATION DISCLOSED HEREIN ORIGINATED BY AND IS THE PROPERTY OF INTERMEC TECHNOLOGIES CORPORATION AND EXCEPT FOR RIGHTS EXPRESSLY GRANTED BY WRITTEN CONSENT, SUCH INFORMATION SHALL NOT BE DISCLOSED OR DISSEMINATED WHOLE OR IN PART. INTERMEC TECHNOLOGIES CORPORATION RESERVES ALL PATENT, PROPRIETARY, DESIGN, USE, SALE, MANUFACTURING AND REPRODUCTION RIGHTS THERETO.

CAD DB.REF- 067262.1.d SYSTEM - HP/ME30							
UNLESS OTHERWISE SPECIFIED, DIMENSIONS ARE IN INCHES.	APPROVALS	DATE	 6001 36TH AVENUE WEST EVERETT, WA 98203-9280 TITLE ANTENNA, 2.4GHZ, 5dBi DUAL FLAT PANEL				
.XX ± .12	DRAWN	J.FOTI				5-11-98	
.XXX ±	CHECKED	R.HOAGLUND				5-21-98	
ANGLES ±	RESP ENGM.	SHAVER				6-2-98	
	QA	T.ANDERSON				6-2-98	
	MFG ENG	M.SALATINO				5-26-98	
	SAC	P.HELTON	5-26-98	SIZE	CAGE CODE	DRAWING NUMBER	REV
	CMPNT ENG	T.KEY	5-27-98	C	33825	067262	D
				SCALE	NONE		SHEET 1 OF 1

4 3 2 1



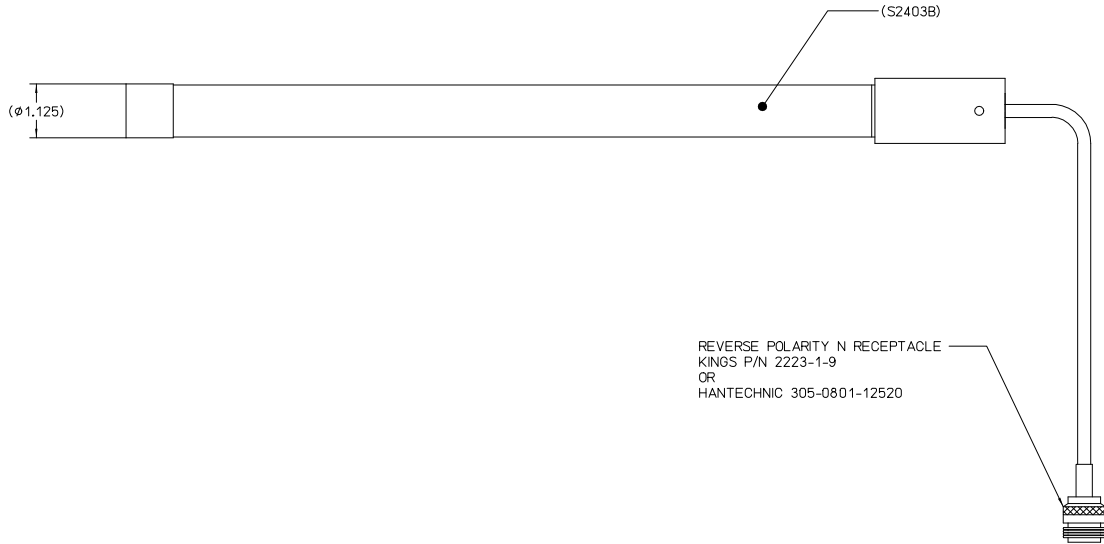
APPROVED SOURCE(S) OF SUPPLY				
DASH #	SUPPLIER	PART NUMBER	ROHS	DATE CODE
-002	CUSHCRAFT	S2403BP12RNF	NO	
-003	CUSHCRAFT	S2403BP112RNF	YES	JAN 2006 OR LATER



REVISION		REVISIONS		
REV	DESCRIPTION	DATE	DRAWN & APPROVED	
C	-001 RELEASED AT REV C			
D	-001 PER ECN 025344	8-27-96	G.OPSTAD	RCH
E	-002 PER ECN 103724	4-21-03	G.OPSTAD	GAR
F	PER ECN 308772 ADD -003, RHOS INFO & DATE CODE INFO ADDED NOTES 8 AND 9	03-09-06	J.LEE	GAR

Supplier P/N: Laird-Cushcraft, S2403BP 802.11 b/g

**G CN 310669**



- NOTES: UNLESS OTHERWISE SPECIFIED
- MATERIAL: POLYCARBONATE.
  - REMOVE ALL BURRS AND SHARP EDGES.
  - COSMETIC REQUIREMENTS PER SPECIFICATION 044856, APPENDIX C, CATEGORY II, CLASS B.
  - BAG PARTS AND MARK BAG WITH 063363 PER SPECIFICATION 606427. DO NOT MARK DASH NUMBER.
  - CHANGES REQUIRE SAC APPROVAL.
  - SPECIFICATION:  
 FREQUENCY RANGE: 2400-2500MHz  
 IMPEDANCE: 50 OHMS (NOMINAL)  
 GAIN: 3dBd (REFERENCED TO DIPOLE)  
 5dBi (REFERENCED TO ISOTROPIC)  
 BANDWIDTH: 100MHz (VSWR <=1.5:1)  
 VSWR: <=1.5:1 (2400-2500MHz)  
 WIND SURVIVAL: 125MPH  
 POWER RATING: 50 WATTS MAX
  - MOUNTING HARDWARE KIT AND INSTRUCTIONS INCLUDED.
  - 003 PART OR ASSEMBLY MUST CONFORM TO DOCUMENT 631869 INTERMEC RESTRICTED SUBSTANCES COMPLIANCE REQUIREMENTS, MOST CURRENT REVISION.
  - 063363-003 MAY BE USED IN PLACE OF 063363-002, BUT 063363-002 MAY NOT BE USED IN PLACE OF 063363-003.

**10 -002 INACTIVE, REPLACED BY 063363-003**

SOURCE CONTROL DRAWING

NOTICE  
 THIS DRAWING SHALL NOT BE DUPLICATED OR USED FOR ANY PURPOSE OTHER THAN THAT FOR WHICH PROVIDED. THE INFORMATION DISCLOSED HEREIN ORIGINATED BY AND IS THE PROPERTY OF INTERMEC CORPORATION AND EXCEPT FOR RIGHTS EXPRESSLY GRANTED BY WRITTEN CONSENT, SUCH INFORMATION SHALL NOT BE DISCLOSED OR DISSEMINATED WHOLE OR IN PART. INTERMEC CORPORATION RESERVES ALL PATENT, PROPRIETARY, DESIGN, USE, SALE, MANUFACTURING AND REPRODUCTION RIGHTS THERE TO.

CAD DB, REF - WM SYSTEM - HP-ME30		APPROVALS		DATE	Intermec 6001 36TH AVENUE WEST EVERETT, WA 98203-9280
UNLESS OTHERWISE SPECIFIED, DIMENSIONS ARE IN INCHES.	DRAWN	J.FOTI	8-23-95	TITLE	
.XX *	CHECKED	R.HOAGLUND	1-19-96	QA	ANTENNA, 2.4GHZ, OMN, FAMILY
.XXX *	RESP ENG	M.CHIN	1-23-96	MFG ENG	
ANGLES *	QA	T.ANDERSON		SAC	SIZE: CAGE CODE DRAWING NUMBER D 33825 063363
	MFG ENG	M.SALATINO	1-22-96	COMPNT ENG	
	SAC	P.HELTON	1-22-96		SCALE NONE SHEET 1 OF 1

