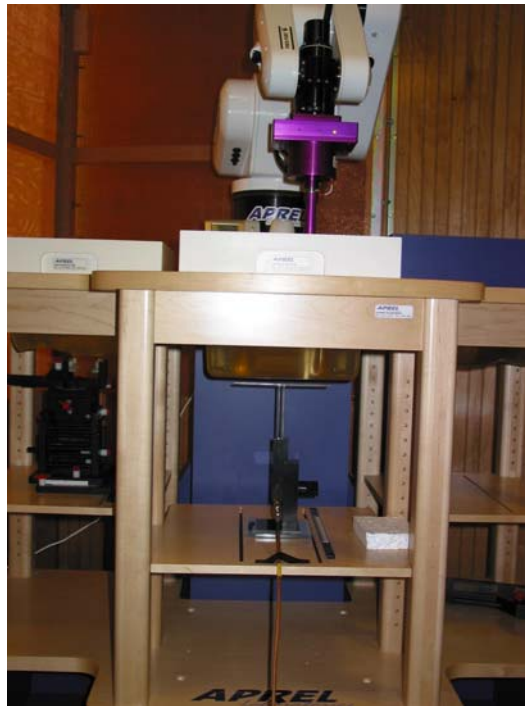
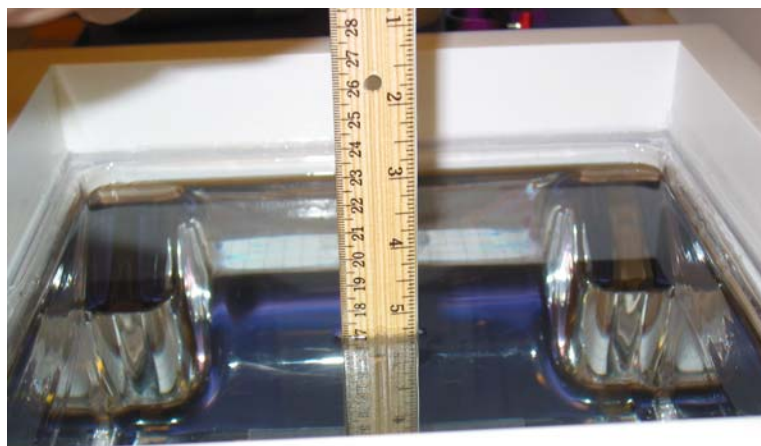


Appendix C – SAR Test Setup Photos



System Body Configuration



Body Tissue Depth



Test Position – Right Head Touch



Test Position – Right Head Tilt



Test Position – Left Head Touch



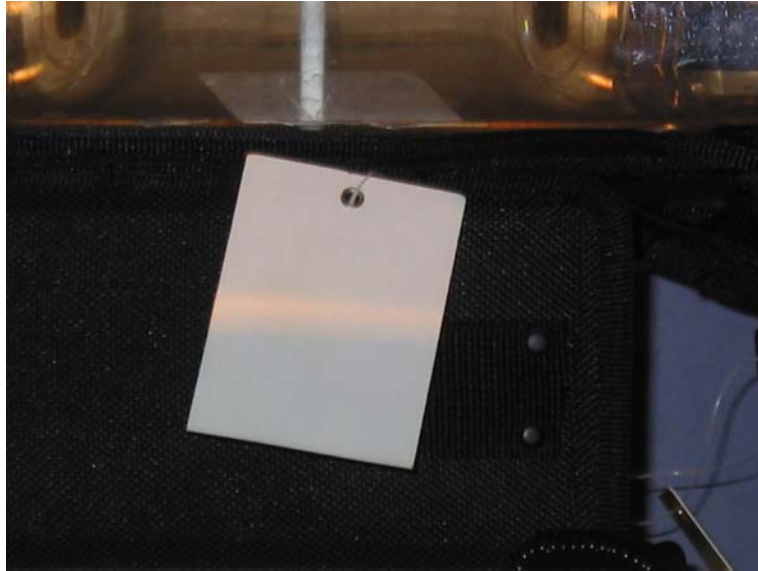
Test Position – Left Head Tilt



Test Position – Body Front



Test Position – Body Right



Test Position – Body Left



Test Position – Body Left With Headset



Front of Device



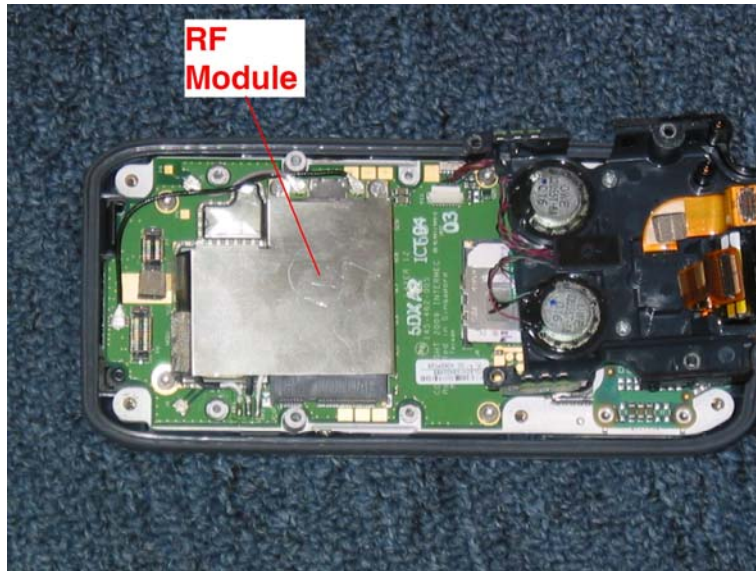
Back of Device



Battery



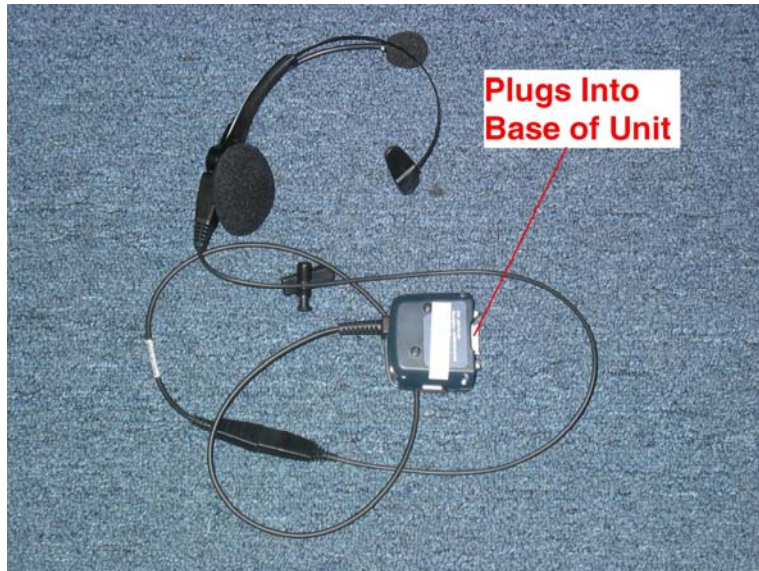
Holster



RF Module



Antenna Location



**Plugs Into
Base of Unit**

Headset for Testing