

The CN70 ships with a partially charged battery. You can use a DX1, DX2, or DX4 multi-dock and a power supply to charge the battery. You can also charge the battery by connecting the computer directly to an external power supply. Charging options are sold and shipped separately. To order these charging accessories, contact your local Intermec representative.

Where to Find More Information

www.intermec.com
In the U.S.A and Canada, call
1.800.755.5505



Caution: See Compliance Insert for use restrictions associated with this product.

This product is protected by one or more patents.

Electrical rating: --- 4,37 / 4,8 V; 2 / 1,5 A

CN70 Mobile Computer Quick Start Guide



P/N 930-258-001



Worldwide Headquarters
6001 36th Avenue West
Everett, Washington 98203
U.S.A.

tel 425.348.2600

fax 425.355.9551

www.intermec.com

© 2011 Intermec Technologies Corporation. All rights reserved.



CN70

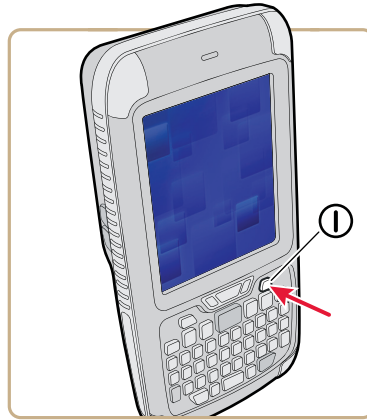
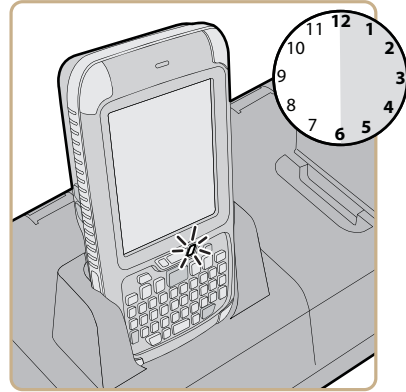
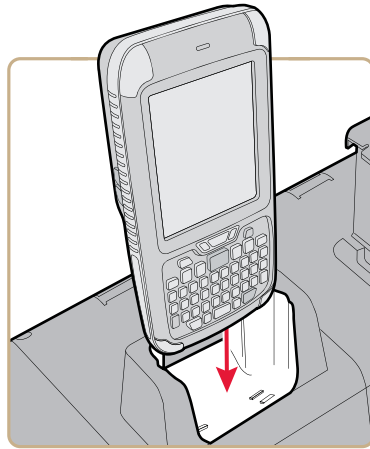
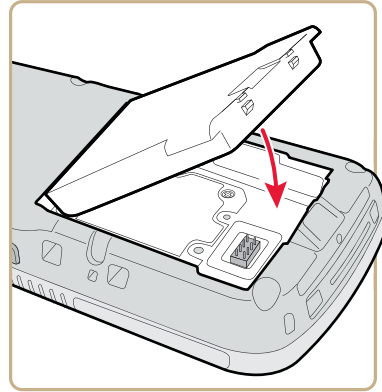
Mobile Computer

1000CP03C, 1000CP03S



Quick Start Guide

CN70



To synchronize the CN70 with your Windows PC, visit:

www.windowsmobile.com/getstarted

