



**FCC OET BULLETIN 65 SUPPLEMENT C
IC RSS-102 ISSUE 2**

SAR EVALUATION REPORT

For

**Ruggedized Handheld PDA-type Device
W/dual-band GSM/GPRS/WCDMA/HSDPA, 802.11b/g & BT
MODEL: CN4, CN4e
FCC ID: EHA-03CN4
IC: 1223A-01CN4**

REPORT NUMBER: 09U12493-33, Revision C

ISSUE DATE: July 17, 2009

Prepared for

**INTERMEC TECHNOLOGIES CORPORATION
6001 – 36TH AVENUE WEST
EVERETT, WA 98203, USA**

Prepared by

**COMPLIANCE CERTIFICATION SERVICES
47173 BENICIA STREET
FREMONT, CA 94538, U.S.A.
TEL: (510) 771-1000
FAX: (510) 661-0888**



NVLAP LAB CODE 200065-0

Revision History

Rev.	Issue Date	Revisions	Revised By
--	June 9, 2009	Initial Issue	--
A	June 16, 2009	Additional test with standard battery pack (AB16) at UMTS Band II worst-case configuration. The following section has been updates. <ul style="list-style-type: none">• Sec. 5 Battery pack information• Sec. 8.2 Liquid parameters check• Sec. 9.1 System check• Sec. 11.1.2 (Right hand side tilt position) and 11.1.4 (Body worn position) Summary of test results	Sunny Shih
B	July 17, 2009	Updated report based on FCC reviewer's comments. <ol style="list-style-type: none">1. page 25, sec. 10.12. page 29, sec. 11 and 11.1	Sunny Shih
C	July 20, 2009	Revised report number	A. Zaffar

TABLE OF CONTENTS

1. ATTESTATION OF TEST RESULTS	5
2. TEST METHODOLOGY	6
3. FACILITIES AND ACCREDITATION	6
4. CALIBRATION AND UNCERTAINTY	7
4.1. <i>MEASURING INSTRUMENT CALIBRATION</i>	7
4.2. <i>MEASUREMENT UNCERTAINTY</i>	8
5. EQUIPMENT UNDER TEST	9
6. SYSTEM SPECIFICATIONS	10
7. COMPOSITION OF INGREDIENTS FOR TISSUE SIMULATING LIQUIDS	11
8. LIQUID PARAMETERS CHECK	12
8.1. <i>LIQUID CHECK RESULTS FOR 835 MHZ</i>	13
8.2. <i>LIQUID CHECK RESULTS FOR 1900 MHZ</i>	16
8.3. <i>LIQUID CHECK RESULTS FOR 2450 MHZ</i>	20
9. SYSTEM CHECK	22
9.1. <i>SYSTEM CHECK RESULTS FOR D835V2</i>	23
9.2. <i>SYSTEM CHECK RESULTS FOR D1900V2</i>	23
9.3. <i>SYSTEM CHECK RESULTS FOR D2450V2</i>	24
10. OUTPUT POWER VERIFICATION	25
10.1. <i>GSM</i>	25
10.2. <i>UMTS RELEASE 99</i>	26
10.3. <i>UMTS HSDPA</i>	27
10.4. <i>WIFI</i>	28
11. SUMMARY OF TEST RESULTS	29
11.1. <i>WORST-CASE CONFIGURATIONS</i>	29
11.2. <i>UMTS BAND II (1900 MHZ)</i>	29
11.2.1. <i>LEFT HAND SIDE – CN4e</i>	29
11.2.2. <i>RIGHT HAND SIDE – CN4e</i>	29
11.2.3. <i>RIGHT HAND SIDE – CN4</i>	30
11.2.4. <i>BODY WORN – CN4e</i>	30
11.2.5. <i>BODY WORN – CN4</i>	30
11.3. <i>GSM1900</i>	31
11.3.1. <i>LEFT HAND SIDE – CN4e</i>	31
11.3.2. <i>RIGHT HAND SIDE – CN4e</i>	31

11.3.3. BODY WORN – CN4e 31

11.4. UMTS BAND V (850 MHZ)..... 32

11.4.1. LEFT HAND SIDE – CN4e 32

11.4.2. RIGHT HAND SIDE – CN4e..... 32

11.4.3. BODY WORN – CN4e..... 32

11.4.4. BODY WORN – CN4 32

11.5. GSM850 33

11.5.1. LEFT HAND SIDE – CN4e 33

11.5.2. LEFT HAND SIDE – CN4 33

11.5.3. RIGHT HAND SIDE – CN4e..... 33

11.5.4. BODY WORN – CN4e..... 33

11.6. WIFI..... 34

11.6.1. LEFT HAND SIDE – CN4 34

11.6.2. RIGHT HAND SIDE – CN4..... 34

11.6.3. LEFT HAND SIDE – CN4e 34

11.6.4. BODY WORN – CN4 34

11.6.5. BODY WORN – CN4e..... 34

12. KDB 648474 SAR HANDSETS MULTI XMITER ASSESSMENT 35

13. WORST-CASE SAR TEST PLOTS 39

14. ATTACHMENTS 45

15. TEST SETUP PHOTO 46

15.1. SETUP PHOTO FOR CN4..... 46

15.2. SETUP PHOTO FOR CN4e..... 49

16. HOST DEVICE PHOTO 52

1. ATTESTATION OF TEST RESULTS

COMPANY NAME: INTERMEC TECHNOLOGIES CORPORATION
 6001 – 36TH AVENUE WEST
 EVERETT, WA 98203, USA

EUT DESCRIPTION: Ruggedized Handheld PDA-type Device
 W/dual-band GSM/GPRS/WCDMA/HSDPA, 802.11b/g & BT

MODEL NUMBER: CN4, CN4e

DEVICE CATEGORY: Portable

EXPOSURE CATEGORY: General Population/Uncontrolled Exposure

DATE TESTED: May 14 - June 7 and June 16, 2009

THE HIGHEST SAR VALUES:

FCC / IC Rule Parts	Frequency Range (MHz)	The Highest SAR Values (1g_mW/g)	Limit mW/g)
22H / RSS-132	824 - 849	Head: 0.511 mW/g; Body: 0.351 mW/g	1.6
24E / RSS-133	1850 - 1910	Head: 0.684 mW/g; Body: 0.987 mW/g	
15.247 / RSS-210	2412 – 2462	Head: 0.784 mW/g; Body: 0.078 mW/g	
Simultaneous (Multi Band) SAR Test Results:	<u>Test position</u>	<u>Multi Band</u>	<u>Results (mW/g)</u>
	Head (LHS Touch)	WiFi-WWAN	1.03 mW/g
	Head (RHS Tilt)	WWAN-WiFi	0.873 mW/g

APPLICABLE STANDARDS AND TEST PROCEDURES:

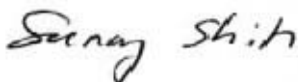
STANDARDS AND TEST PROCEDURES	TEST RESULTS
<ul style="list-style-type: none"> FCC OET Bulletin 65 Supplement C and the following specific Test Procedures: <ul style="list-style-type: none"> KDB 941225 D01 SAR test for 3G devices KDB 248227 D01 SAR measurement procedures for 802.11 a/b/g transmitters KDB 648474 D01 SAR evaluation considerations for handsets with multiple transmitters and antennas 	Pass
<ul style="list-style-type: none"> RSS-102 ISSUE 2 	Pass

Compliance Certification Services, Inc. (CCS) tested the above equipment in accordance with the requirements set forth in the above standards. All indications of Pass/Fail in this report are opinions expressed by CCS based on interpretations and/or observations of test results. Measurement Uncertainties were not taken into account and are published for informational purposes only. The test results show that the equipment tested is capable of demonstrating compliance with the requirements as documented in this report.

Note: The results documented in this report apply only to the tested sample, under the conditions and modes of operation as described herein. This document may not be altered or revised in any way unless done so by CCS and all revisions are duly noted in the revisions section. Any alteration of this document not carried out by CCS will constitute fraud and shall nullify the document. This report must not be used by the client to claim product certification, approval, or endorsement by NVLAP, NIST, any agency of the Federal Government, or any agency of any government.

Approved & Released For CCS By:

Tested By:




SUNNY SHIH
 ENGINEERING SUPERVISOR
 COMPLIANCE CERTIFICATION SERVICES

CHAO YEN LIN
 EMC ENGINEER
 COMPLIANCE CERTIFICATION SERVICES

2. TEST METHODOLOGY

The tests documented in this report were performed in accordance with FCC OET Bulletin 65 Supplement C, IC RSS 102 Issue 2 and the following specific FCC Test Procedures.

- KDB 941225 D01 SAR test for 3G devices
- KDB 248227 D01 SAR measurement procedures for 802.11 a/b/g transmitters
- KDB 648474 D01 SAR evaluation considerations for handsets with multiple transmitters and antennas

3. FACILITIES AND ACCREDITATION

The test sites and measurement facilities used to collect data are located at 47173 Benicia Street, Fremont, California, USA.

CCS is accredited by NVLAP, Laboratory Code 200065-0. The full scope of accreditation can be viewed at <http://www.ccsemc.com>.

4. CALIBRATION AND UNCERTAINTY

4.1. MEASURING INSTRUMENT CALIBRATION

The measuring equipment utilized to perform the tests documented in this report has been calibrated in accordance with the manufacturer's recommendations, and is traceable to recognized national standards.

Name of Equipment	Manufacturer	Type/Model	Serial No.	Cal. Due date		
				MM	DD	Year
Robot - Six Axes	Stäubli	RX90BL	N/A	N/A		
Robot Remote Control	Stäubli	CS7MB	3403-91535	N/A		
DASY4 Measurement Server	SPEAG	SEUMS001BA	1041	N/A		
Probe Alignment Unit	SPEAG	LB (V2)	261	N/A		
SAM Phantom (SAM1)	SPEAG	QD000P40CA	1185	N/A		
SAM Phantom (SAM2)	SPEAG	QD000P40CA	1050	N/A		
Oval Flat Phantom (ELI 4.0)	SPEAG	QD OVA001 B	1003	N/A		
Electronic Probe kit	HP	85070C	N/A	N/A		
S-Parameter Network Analyzer	Agilent	8753ES-6	MY40001647	11	14	2009
Signal Generator	Agilent	8753ES-6	MY40001647	11	14	2009
E-Field Probe	SPEAG	EX3DV4	3686	3	23	1010
Thermometer	ERTCO	639-1S	1718	5	1	2010
Data Acquisition Electronics	SPEAG	DAE3 V1	427	10	20	2009
System Validation Dipole	SPEAG	D835V2	4d002	6	22	2009
System Validation Dipole	SPEAG	D900V2	108	1	21	2010
System Validation Dipole	SPEAG	D1800V2	294	1	29	2010
System Validation Dipole	SPEAG	D1900V2	5d043	1	29	2010
System Validation Dipole	SPEAG	D2450V2	748	4	14	2010
System Validation Dipole	SPEAG	D5GHzV2	1003	11	21	2009
MXA Signal Analyzer	Agilent	N9020A	US48350984	10	23	2009
ESG Vector Signal Generator	Agilent	E4438C	US44271090	9	17	2010
Power Meter	Giga-tronics	8651A	8651404	1	11	2010
Power Sensor	Giga-tronics	80701A	1834588	1	11	2010
Amplifier	Mini-Circuits	ZVE-8G	90606	N/A		
Amplifier	Mini-Circuits	ZHL-42W	D072701-5	N/A		
Simulating Liquid	CCS	H1900	N/A	Within 24 hrs of first test		
Simulating Liquid	CCS	M1900	N/A	Within 24 hrs of first test		
Simulating Liquid	CCS	H1800	N/A	Within 24 hrs of first test		
Simulating Liquid	CCS	M1800	N/A	Within 24 hrs of first test		
Simulating Liquid	CCS	H1700	N/A	Within 24 hrs of first test		
Simulating Liquid	CCS	M1700	N/A	Within 24 hrs of first test		
Simulating Liquid	CCS	H835	N/A	Within 24 hrs of first test		
Simulating Liquid	CCS	M835	N/A	Within 24 hrs of first test		
Simulating Liquid	CCS	H900	N/A	Within 24 hrs of first test		
Simulating Liquid	CCS	M900	N/A	Within 24 hrs of first test		
Simulating Liquid	SPAEG	H2450	N/A	Within 24 hrs of first test		
Simulating Liquid	SPAEG	M2450	N/A	Within 24 hrs of first test		

4.2. MEASUREMENT UNCERTAINTY

Measurement uncertainty for 300 MHz – 3000 MHz

Uncertainty component	Tol. (±%)	Probe Dist.	Div.	Ci (1g)	Ci (10g)	Std. Unc.(±%)	
						Ui (1g)	Ui(10g)
Measurement System							
Probe Calibration	4.80	N	1	1	1	4.80	4.80
Axial Isotropy	4.70	R	1.732	0.707	0.707	1.92	1.92
Hemispherical Isotropy	9.60	R	1.732	0.707	0.707	3.92	3.92
Boundary Effects	1.00	R	1.732	1	1	0.58	0.58
Linearity	4.70	R	1.732	1	1	2.71	2.71
System Detection Limits	1.00	R	1.732	1	1	0.58	0.58
Readout Electronics	1.00	N	1	1	1	1.00	1.00
Response Time	0.80	R	1.732	1	1	0.46	0.46
Integration Time	2.60	R	1.732	1	1	1.50	1.50
RF Ambient Conditions - Noise	1.59	R	1.732	1	1	0.92	0.92
RF Ambient Conditions - Reflections	0.00	R	1.732	1	1	0.00	0.00
Probe Positioner Mechanical Tolerance	0.40	R	1.732	1	1	0.23	0.23
Probe Positioning With Respect to Phantom Shell	2.90	R	1.732	1	1	1.67	1.67
Extrapolation, interpolation, and integration algorithms for max. SAR evaluation	3.90	R	1.732	1	1	2.25	2.25
Test sample Related							
Test Sample Positioning	1.10	N	1	1	1	1.10	1.10
Device Holder Uncertainty	3.60	N	1	1	1	3.60	3.60
Power and SAR Drift Measurement	5.00	R	1.732	1	1	2.89	2.89
Phantom and Tissue Parameters							
Phantom Uncertainty	4.00	R	1.732	1	1	2.31	2.31
Liquid Conductivity - Target	5.00	R	1.732	0.64	0.43	1.85	1.24
Liquid Conductivity - Meas.	8.60	N	1	0.64	0.43	5.50	3.70
Liquid Permittivity - Target	5.00	R	1.732	0.6	0.49	1.73	1.41
Liquid Permittivity - Meas.	3.30	N	1	0.6	0.49	1.98	1.62
Combined Standard Uncertainty	RSS					11.44	10.49
Expanded Uncertainty (95% Confidence Interval)	K=2					22.87	20.98
Notes for table							
1. Tol. - tolerance in influence quantity							
2. N - Nomal							
3. R - Rectangular							
4. Div. - Divisor used to obtain standard uncertainty							
5. Ci - is te sensitivity coefficient							

5. EQUIPMENT UNDER TEST

Ruggedized Handheld PDA-type Device

W/dual-band GSM/GPRS/WCDMA/HSDPA, 802.11b/g & BT

Model: CN4, CN4e

Model differences:

- Body Styles: CN4 is standard and CN4e is extended
- Both are available with numeric or QWERTY keypads

Normal operation:

- Held to head
- Worn on body (LCD facing-up; LCD facing-down) with holster w/ belt-clip

Other radio modules in the host device:

- 802.11bg
- Bluetooth

Battery Pack:

Li-ion Battery.

- Standard - AB8 and AB15
The AB8 and AB15 batteries are identical except that they come from different suppliers
- Extended - AB9 and AB16
The AB9 and AB16 batteries are identical except that they come from different suppliers
The AB9/AB16 batteries have extended capacity

Extended battery AB16 is used for all SAR testing. Additional SAR test with standard battery (AB15) at worst-case test configurations.

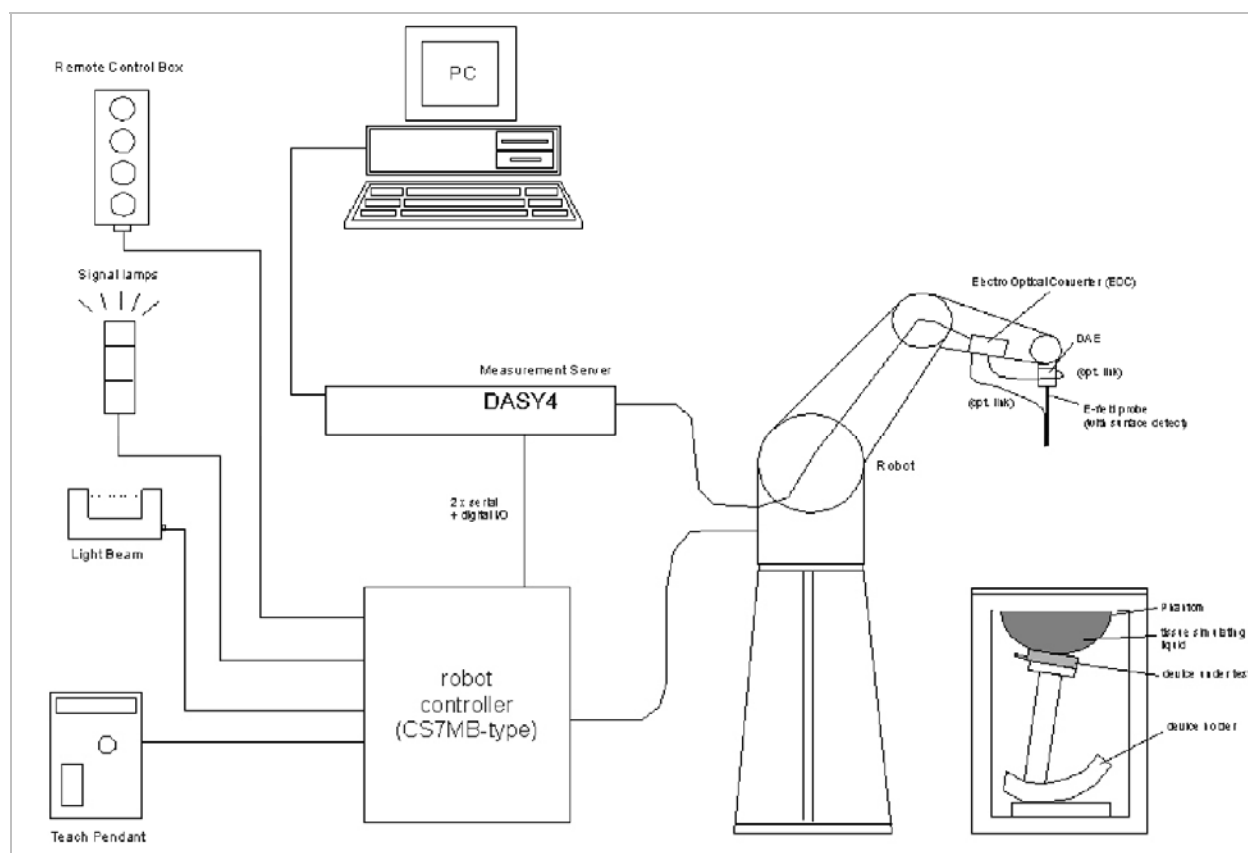
Co-located Tx:

- WWAN can transmit simultaneously with 802.11g
- WWAN can transmit simultaneously with Bluetooth
- 802.11g cannot transmit simultaneously with Bluetooth

Antenna Separation distances:

- 2.2 cm - WWAN antenna-to-WiFi (802.11g)
- 1.2 cm - WWAN antenna-to-Bluetooth antenna
- 3.9 cm - WiFi (802.11g)-to-Bluetooth antenna

6. SYSTEM SPECIFICATIONS



The DASY4 system for performing compliance tests consists of the following items:

- A standard high precision 6-axis robot (Stäubli RX family) with controller, teach pendant and software. An arm extension for accommodating the data acquisition electronics (DAE).
- A dosimetric probe, i.e., an isotropic E-field probe optimized and calibrated for usage in tissue simulating liquid. The probe is equipped with an optical surface detector system.
- A data acquisition electronics (DAE) which performs the signal amplification, signal multiplexing, AD-conversion, offset measurements, mechanical surface detection, collision detection, etc. The unit is battery powered with standard or rechargeable batteries. The signal is optically transmitted to the EOC.
- The function of the measurement server is to perform the time critical tasks such as signal filtering, control of the robot operation and fast movement interrupts.
- A probe alignment unit which improves the (absolute) accuracy of the probe positioning.
- A computer operating Windows 2000 or Windows XP.
- DASY4 software.
- Remote controls with teach pendant and additional circuitry for robot safety such as warning lamps, etc.
- The SAM twin phantom enabling testing left-hand and right-hand usage.
- The device holder for handheld mobile phones.
- Tissue simulating liquid mixed according to the given recipes.
- Validation dipole kits allowing to validate the proper functioning of the system.

7. COMPOSITION OF INGREDIENTS FOR TISSUE SIMULATING LIQUIDS

The following tissue formulations are provided for reference only as some of the parameters have not been thoroughly verified. The composition of ingredients may be modified accordingly to achieve the desired target tissue parameters required for routine SAR evaluation.

Ingredients (% by weight)	Frequency (MHz)									
	450		835		915		1900		2450	
Tissue Type	Head	Body	Head	Body	Head	Body	Head	Body	Head	Body
Water	38.56	51.16	41.45	52.4	41.05	56.0	54.9	40.4	62.7	73.2
Salt (NaCl)	3.95	1.49	1.45	1.4	1.35	0.76	0.18	0.5	0.5	0.04
Sugar	56.32	46.78	56.0	45.0	56.5	41.76	0.0	58.0	0.0	0.0
HEC	0.98	0.52	1.0	1.0	1.0	1.21	0.0	1.0	0.0	0.0
Bactericide	0.19	0.05	0.1	0.1	0.1	0.27	0.0	0.1	0.0	0.0
Triton X-100	0.0	0.0	0.0	0.0	0.0	0.0	0.0	0.0	36.8	0.0
DGBE	0.0	0.0	0.0	0.0	0.0	0.0	44.92	0.0	0.0	26.7
Dielectric Constant	43.42	58.0	42.54	56.1	42.0	56.8	39.9	54.0	39.8	52.5
Conductivity (S/m)	0.85	0.83	0.91	0.95	1.0	1.07	1.42	1.45	1.88	1.78

Salt: 99+% Pure Sodium Chloride

Sugar: 98+% Pure Sucrose

Water: De-ionized, 16 MΩ+ resistivity

HEC: Hydroxyethyl Cellulose

DGBE: 99+% Di(ethylene glycol) butyl ether, [2-(2-butoxyethoxy)ethanol]

Triton X-100 (ultra pure): Polyethylene glycol mono [4-(1,1, 3, 3-tetramethylbutyl)phenyl]ether

8. LIQUID PARAMETERS CHECK

The simulating liquids should be checked at the beginning of a series of SAR measurements to determine if the dielectric parameters are within the tolerances of the specified target values. The relative permittivity and conductivity of the tissue material should be within $\pm 5\%$ of the values given in the table below.

Reference Values of Tissue Dielectric Parameters for Head and Body Phantom (for 150 – 3000 MHz and 5800 MHz)

The head tissue dielectric parameters recommended by the IEEE SCC-34/SC-2 in IEEE Standard 1528 have been incorporated in the following table. These head parameters are derived from planar layer models simulating the highest expected SAR for the dielectric properties and tissue thickness variations in a human head. Other head and body tissue parameters that have not been specified in P1528 are derived from the tissue dielectric parameters computed from the 4-Cole-Cole equations and extrapolated according to the head parameters specified in IEEE Standard 1528.

Target Frequency (MHz)	Head		Body	
	ϵ_r	σ (S/m)	ϵ_r	σ (S/m)
150	52.3	0.76	61.9	0.8
300	45.3	0.87	58.2	0.92
450	43.5	0.87	56.7	0.94
835	41.5	0.9	55.2	0.97
900	41.5	0.97	55	1.05
915	41.5	0.98	55	1.06
1450	40.5	1.2	54	1.3
1610	40.3	1.29	53.8	1.4
1800 – 2000	40	1.4	53.3	1.52
2450	39.2	1.8	52.7	1.95
3000	38.5	2.4	52	2.73
5800	35.3	5.27	48.2	6

(ϵ_r = relative permittivity, σ = conductivity and $\rho = 1000 \text{ kg/m}^3$)

8.1. LIQUID CHECK RESULTS FOR 835 MHZ

Simulating Liquid Dielectric Parameters for Muscle 835 MHz

Room Ambient Temperature = 24°C; Relative humidity = 35%

Measured by: Chaoyen Lin

f (MHz)	Liquid Parameters			Measured	Target	Delta (%)	Limit (%)
835	e'	53.58	Relative Permittivity (ϵ_r):	53.576	55.2	-2.94	± 5
	e''	20.92	Conductivity (σ):	0.972	0.97	0.17	± 5
900	e'	53.13	Relative Permittivity (ϵ_r):	53.130	55.0	-3.40	± 5
	e''	20.68	Conductivity (σ):	1.035	1.05	-1.38	± 5

Liquid temperature: 23 deg. C

May 14, 2009 05:10 PM

Frequency	e'	e''
800000000.	54.0514	21.1012
805000000.	53.9562	21.0766
810000000.	53.8908	21.0365
815000000.	53.8237	21.0199
820000000.	53.7634	20.9566
825000000.	53.7168	20.9445
830000000.	53.6438	20.9477
835000000.	53.5760	20.9162
840000000.	53.5094	20.8847
845000000.	53.4763	20.8523
850000000.	53.4449	20.8521
855000000.	53.3874	20.8075
860000000.	53.3508	20.7879
865000000.	53.3279	20.7740
870000000.	53.2859	20.7353
875000000.	53.2588	20.7339
880000000.	53.2382	20.7193
885000000.	53.2069	20.7299
890000000.	53.1842	20.7056
895000000.	53.1475	20.6973
900000000.	53.1297	20.6817
905000000.	53.0705	20.6512
910000000.	53.0148	20.6403
915000000.	52.9273	20.6114
920000000.	52.8960	20.5659
925000000.	52.8476	20.5276
930000000.	52.8044	20.4621
935000000.	52.7324	20.4494
940000000.	52.6874	20.4261
945000000.	52.6554	20.4078
950000000.	52.6326	20.3859

The conductivity (σ) can be given as:

$$\sigma = \omega \epsilon_0 e'' = 2 \pi f \epsilon_0 e''$$

where $f = \text{target } f * 10^6$

$$\epsilon_0 = 8.854 * 10^{-12}$$

Simulating Liquid Dielectric Parameters for Muscle 835 MHz

Room Ambient Temperature = 24°C; Relative humidity = 35%

Measured by: Chaoyen Lin

f (MHz)	Liquid Parameters			Measured	Target	Delta (%)	Limit (%)
835	e'	53.45	Relative Permittivity (ϵ_r):	53.447	55.2	-3.18	± 5
	e"	20.47	Conductivity (σ):	0.951	0.97	-1.98	± 5
900	e'	52.84	Relative Permittivity (ϵ_r):	52.840	55.0	-3.93	± 5
	e"	20.59	Conductivity (σ):	1.031	1.05	-1.81	± 5

Liquid temperature: 23 deg. C

May 16, 2009 09:19 AM

Frequency	e'	e"
805000000.	53.7788	20.9581
810000000.	53.6912	20.8539
815000000.	53.6151	20.7637
820000000.	53.5559	20.6408
825000000.	53.5396	20.5591
830000000.	53.4781	20.4888
835000000.	53.4466	20.4687
840000000.	53.4256	20.4450
845000000.	53.3800	20.4412
850000000.	53.3484	20.4431
855000000.	53.2903	20.4871
860000000.	53.2512	20.4916
865000000.	53.2295	20.5110
870000000.	53.1526	20.5509
875000000.	53.1177	20.5854
880000000.	53.0965	20.6250
885000000.	53.0325	20.6595
890000000.	52.9591	20.6660
895000000.	52.9163	20.6401
900000000.	52.8395	20.5911
905000000.	52.8049	20.4747
910000000.	52.8068	20.4120
915000000.	52.7924	20.2944
920000000.	52.7684	20.1915
925000000.	52.7623	20.1332
930000000.	52.7801	20.0961
935000000.	52.7825	20.0953
940000000.	52.7524	20.0874
945000000.	52.7058	20.0861
950000000.	52.6398	20.1329
955000000.	52.5078	20.1368
960000000.	52.4268	20.1401
965000000.	52.3759	20.1413
970000000.	52.3110	20.1780

The conductivity (σ) can be given as:

$$\sigma = \omega \epsilon_0 e'' = 2 \pi f \epsilon_0 e''$$

where $f = \text{target } f * 10^6$

$$\epsilon_0 = 8.854 * 10^{-12}$$

Simulating Liquid Dielectric Parameters for Head 835 MHz

Room Ambient Temperature = 24°C; Relative humidity = 35%

Measured by: Chaoyen Lin

f (MHz)	Liquid Parameters			Measured	Target	Delta (%)	Limit (%)
835	e'	43.39	Relative Permittivity (ϵ_r):	43.386	41.5	4.55	± 5
	e"	18.75	Conductivity (σ):	0.871	0.90	-3.25	± 5
900	e'	42.65	Relative Permittivity (ϵ_r):	42.645	41.5	2.76	± 5
	e"	18.76	Conductivity (σ):	0.939	0.97	-3.18	± 5

Liquid temperature: 23 deg. C

May 17, 2009 09:27 AM

Frequency	e'	e"
805000000.	43.7545	18.9602
810000000.	43.6878	18.9139
815000000.	43.6095	18.8984
820000000.	43.5400	18.8541
825000000.	43.5101	18.8148
830000000.	43.4327	18.7738
835000000.	43.3864	18.7455
840000000.	43.3011	18.7604
845000000.	43.2566	18.7321
850000000.	43.2338	18.7392
855000000.	43.1338	18.7279
860000000.	43.0466	18.7544
865000000.	43.0141	18.7543
870000000.	42.9365	18.7372
875000000.	42.8742	18.7666
880000000.	42.8285	18.7807
885000000.	42.7901	18.7825
890000000.	42.7313	18.7807
895000000.	42.6980	18.7611
900000000.	42.6454	18.7576
905000000.	42.5988	18.7228
910000000.	42.5644	18.7092
915000000.	42.5073	18.6833
920000000.	42.4661	18.6283
925000000.	42.4415	18.5783
930000000.	42.4126	18.5591
935000000.	42.3494	18.5511
940000000.	42.3016	18.5288
945000000.	42.2830	18.5355
950000000.	42.2394	18.5218
955000000.	42.1480	18.5048
960000000.	42.0719	18.5022
965000000.	42.0236	18.4955
970000000.	41.9450	18.5082
975000000.	41.9024	18.5419

The conductivity (σ) can be given as:

$$\sigma = \omega \epsilon_0 e'' = 2 \pi f \epsilon_0 e''$$

where $f = \text{target } f * 10^6$

$$\epsilon_0 = 8.854 * 10^{-12}$$

8.2. LIQUID CHECK RESULTS FOR 1900 MHZ

Simulating Liquid Dielectric Parameters for Muscle 1900 MHz

Room Ambient Temperature = 24°C; Relative humidity = 35% Measured by: Chaoyen Lin

f (MHz)	Muscle Liquid Parameters			Measured	Target	Delta (%)	Limit (%)
1900	e'	53.429	Relative Permittivity (ϵ_r):	53.4292	53.3	0.24	± 5
	e"	14.457	Conductivity (σ):	1.52805	1.52	0.53	± 5

Liquid temperature: 23 deg. C

May 14, 2009 05:20 PM

Frequency	e'	e"
1710000000.	54.0633	13.8600
1720000000.	54.0416	13.9364
1730000000.	54.0682	14.0275
1740000000.	54.0838	14.0978
1750000000.	54.1007	14.1406
1760000000.	54.0242	14.1670
1770000000.	53.9480	14.1567
1780000000.	53.8584	14.1035
1790000000.	53.7600	14.0850
1800000000.	53.6904	14.1268
1810000000.	53.6061	14.1785
1820000000.	53.5364	14.2401
1830000000.	53.5135	14.3267
1840000000.	53.5059	14.4439
1850000000.	53.5137	14.5178
1860000000.	53.4708	14.5493
1870000000.	53.4474	14.5232
1880000000.	53.4663	14.4658
1890000000.	53.4430	14.4252
1900000000.	53.4292	14.4566
1910000000.	53.3272	14.5524

The conductivity (σ) can be given as:

$$\sigma = \omega \epsilon_0 e'' = 2 \pi f \epsilon_0 e''$$

where $f = \text{target } f * 10^6$

$$\epsilon_0 = 8.854 * 10^{-12}$$

Simulating Liquid Dielectric Parameters for Head 1900 MHz

Room Ambient Temperature = 24°C; Relative humidity = 35% Measured by: Chaoyen Lin

f MHz	Liquid Parameters			Measured	Target	Delta (%)	Limit (%)
1900	e'	41.662	Relative Permittivity (ϵ_r):	41.6616	40.0	4.15	± 5
	e"	13.261	Conductivity (σ):	1.40170	1.40	0.12	± 5

Liquid temperature: 23 deg. C

May 18, 2009 09:43 AM

Frequency	e'	e"
1710000000.	42.4114	12.7041
1720000000.	42.3685	12.7757
1730000000.	42.3498	12.8477
1740000000.	42.3429	12.9405
1750000000.	42.3336	12.9869
1760000000.	42.2879	12.9932
1770000000.	42.2414	12.9720
1780000000.	42.1773	12.9219
1790000000.	42.1186	12.9126
1800000000.	42.0338	12.9426
1810000000.	41.9385	12.9922
1820000000.	41.8524	13.0578
1830000000.	41.7691	13.1436
1840000000.	41.7287	13.2352
1850000000.	41.7153	13.2905
1860000000.	41.7099	13.3370
1870000000.	41.7081	13.3226
1880000000.	41.7145	13.2964
1890000000.	41.7044	13.2630
1900000000.	41.6616	13.2612
1910000000.	41.5947	13.2761

The conductivity (σ) can be given as:

$$\sigma = \omega \epsilon_0 e'' = 2 \pi f \epsilon_0 e''$$

where $f = \text{target } f * 10^6$

$$\epsilon_0 = 8.854 * 10^{-12}$$

Simulating Liquid Dielectric Parameters for Head 1900 MHz

Room Ambient Temperature = 24°C; Relative humidity = 40% Measured by: Sunny Shih

f MHz	Liquid Parameters			Measured	Target	Delta (%)	Limit (%)
1900	e'	40.725	Relative Permittivity (ϵ_r):	40.7249	40.0	1.81	± 5
	e"	13.393	Conductivity (σ):	1.41562	1.40	1.12	± 5

Liquid temperature: 23 deg. C

June 16, 2009 09:32 AM

Frequency	e'	e"
1710000000.	41.6755	12.7691
1720000000.	41.6433	12.8088
1730000000.	41.6243	12.8780
1740000000.	41.5951	12.9531
1750000000.	41.5654	13.0346
1760000000.	41.4734	13.0734
1770000000.	41.3902	13.0884
1780000000.	41.3252	13.0708
1790000000.	41.2827	13.0674
1800000000.	41.2217	13.0914
1810000000.	41.1562	13.1062
1820000000.	41.0803	13.1219
1830000000.	41.0489	13.1616
1840000000.	41.0377	13.2493
1850000000.	40.9933	13.3399
1860000000.	40.9143	13.4072
1870000000.	40.8273	13.4222
1880000000.	40.7778	13.3950
1890000000.	40.7591	13.3721
1900000000.	40.7249	13.3929
1910000000.	40.6839	13.3972

The conductivity (σ) can be given as:

$$\sigma = \omega \epsilon_0 e'' = 2 \pi f \epsilon_0 e''$$

where $f = \text{target } f * 10^6$

$$\epsilon_0 = 8.854 * 10^{-12}$$

Simulating Liquid Dielectric Parameters for Muscle 1900 MHz

Room Ambient Temperature = 24°C; Relative humidity = 40% Measured by: Sunny Shih

f (MHz)	Muscle Liquid Parameters			Measured	Target	Delta (%)	Limit (%)
1900	e'	53.187	Relative Permittivity (ϵ_r):	53.1870	53.3	-0.21	± 5
	e''	14.575	Conductivity (σ):	1.54053	1.52	1.35	± 5

Liquid temperature: 23 deg. C

June 16, 2009 09:37 AM

Frequency	e'	e''
1710000000.	53.9517	13.9266
1720000000.	53.9352	13.9732
1730000000.	53.9220	14.0651
1740000000.	53.9073	14.1432
1750000000.	53.8876	14.2035
1760000000.	53.8156	14.2344
1770000000.	53.7392	14.2402
1780000000.	53.6833	14.2290
1790000000.	53.6302	14.2234
1800000000.	53.5762	14.2485
1810000000.	53.5197	14.2726
1820000000.	53.4575	14.3170
1830000000.	53.4414	14.3612
1840000000.	53.4118	14.4618
1850000000.	53.3882	14.5497
1860000000.	53.3141	14.5991
1870000000.	53.2517	14.5983
1880000000.	53.2302	14.5681
1890000000.	53.2030	14.5582
1900000000.	53.1870	14.5746
1910000000.	53.1400	14.5873

The conductivity (σ) can be given as:

$$\sigma = \omega \epsilon_0 e'' = 2 \pi f \epsilon_0 e''$$

where $f = \text{target } f * 10^6$

$$\epsilon_0 = 8.854 * 10^{-12}$$

8.3. LIQUID CHECK RESULTS FOR 2450 MHZ

Simulating Liquid Dielectric Parameters for Head 2450 MHz

Room Ambient Temperature = 24°C; Relative humidity = 40%

Measured by: Chaoyen Lin

f (MHz)	Liquid Parameters			Measured	Target	Delta (%)	Limit (%)
2450	e'	39.39	Relative Permittivity (ϵ_r):	39.392	39.2	0.49	± 5
	e"	13.80	Conductivity (σ):	1.881	1.80	4.48	± 5

Liquid Temperature: 23 deg. C

June 06, 2009 03:54 PM

Frequency	e'	e"
2400000000.	39.5433	13.5996
2405000000.	39.5265	13.6691
2410000000.	39.5095	13.7077
2415000000.	39.5044	13.7534
2420000000.	39.4908	13.7752
2425000000.	39.4757	13.7983
2430000000.	39.4655	13.8003
2435000000.	39.4546	13.8144
2440000000.	39.4429	13.8207
2445000000.	39.4148	13.8241
2450000000.	39.3922	13.7975
2455000000.	39.3231	13.8083
2460000000.	39.3031	13.7910
2465000000.	39.2496	13.7607
2470000000.	39.2268	13.7266
2475000000.	39.1880	13.7066
2480000000.	39.1811	13.7039
2485000000.	39.1767	13.7103
2490000000.	39.1620	13.7369
2495000000.	39.1466	13.7754
2500000000.	39.1476	13.8388

The conductivity (σ) can be given as:

$$\sigma = \omega \epsilon_0 e'' = 2 \pi f \epsilon_0 e''$$

where $f = \text{target } f * 10^6$

$$\epsilon_0 = 8.854 * 10^{-12}$$

Simulating Liquid Dielectric Parameters for Muscle 2450 MHz

Room Ambient Temperature = 24°C; Relative humidity = 40%

Measured by: Chaoyen Lin

f (MHz)	Liquid Parameters			Measured	Target	Delta (%)	Limit (%)
2450	e'	51.95	Relative Permittivity (ϵ_r):	51.953	52.7	-1.42	± 5
	e''	13.97	Conductivity (σ):	1.904	1.95	-2.36	± 5

Liquid Temperature: 23 deg. C

June 08, 2009 05:30 PM

Frequency	e'	e''
2400000000.	52.0453	13.7407
2405000000.	52.0308	13.8401
2410000000.	52.0245	13.9070
2415000000.	52.0154	13.9740
2420000000.	51.9986	13.9871
2425000000.	51.9996	13.9930
2430000000.	51.9917	13.9916
2435000000.	51.9806	13.9756
2440000000.	51.9945	13.9878
2445000000.	51.9726	13.9895
2450000000.	51.9532	13.9693
2455000000.	51.8831	13.9505
2460000000.	51.8534	13.9102
2465000000.	51.7850	13.8749
2470000000.	51.7539	13.8219
2475000000.	51.7291	13.7911
2480000000.	51.7358	13.7757
2485000000.	51.7459	13.7975
2490000000.	51.7558	13.8648
2495000000.	51.7590	13.9411
2500000000.	51.7646	14.0676

The conductivity (σ) can be given as:

$$\sigma = \omega \epsilon_0 e'' = 2 \pi f \epsilon_0 e''$$

where $f = \text{target } f * 10^6$

$$\epsilon_0 = 8.854 * 10^{-12}$$

9. SYSTEM CHECK

The system performance check is performed prior to any usage of the system in order to guarantee reproducible results. The system performance check verifies that the system operates within its specifications of $\pm 10\%$.

System Performance Check Measurement Conditions

- The measurements were performed in the flat section of the SAM twin phantom filled with Head or Body simulating liquid of the following parameters.
- The DASY4 system with an Isotropic E-Field Probe EX3DV3 was used for the measurements.
- The dipole was mounted on the small tripod so that the dipole feed point was positioned below the center marking of the flat phantom section and the dipole was oriented parallel to the body axis (the long side of the phantom). The standard measuring distance was 10 mm (above 1 GHz) and 15 mm (below 1 GHz) from dipole center to the simulating liquid surface.
- The coarse grid with a grid spacing of 15 mm was aligned with the dipole.
 For 5 GHz band - The coarse grid with a grid spacing of 10 mm was aligned with the dipole.
- Special 7x7x7 fine cube was chosen for cube
- Distance between probe sensors and phantom surface was set to 3 mm.
 For 5 GHz band - Distance between probe sensors and phantom surface was set to 2.5 mm
- The dipole input power (forward power) was 250 mW $\pm 3\%$.
- The results are normalized to 1 W input power.

IEEE Standard 1528-2003 Numerical reference SAR values (W/kg) for reference dipole and flat phantom

Frequency (MHz)	Distance (mm)	1g SAR [W/kg]	10g SAR [W/kg]	Local SAR at surface (above feed-point)
300	15	3	2	4.4
450	15	4.9	3.3	7.2
835	15	9.5	6.2	4.1
900	15	10.8	6.9	16.4
1450	10	29	16	5.02
1800	10	38.1	19.8	69.5
1900	10	39.7	20.5	72.1
2000	10	41.1	21.1	74.6
2450	10	52.4	24	104.2
3000	10	63.8	25.7	104.2

Note: All SAR values normalized to 1 W forward power.

9.1. SYSTEM CHECK RESULTS FOR D835V2

System Validation Dipole: D835V2 SN:4d002

Date: May 14, 2009

Ambient Temperature = 24°C; Relative humidity = 35%

Measured by: Chaoyen Lin

Medium	CW Signal (MHz)	Forward power (mW)	Measured (Normalized to 1 W)		Target	Delta (%)	Tolerance (%)
Body	835	250	1g SAR:	10.2	9.71	5.05	±10
			10g SAR:	6.68	6.38	4.70	

Date: May 16, 2009

Ambient Temperature = 24°C; Relative humidity = 35%

Measured by: Chaoyen Lin

Medium	CW Signal (MHz)	Forward power (mW)	Measured (Normalized to 1 W)		Target	Delta (%)	Tolerance (%)
Body	835	250	1g SAR:	9.82	9.71	1.13	±10
			10g SAR:	6.44	6.38	0.94	

Date: May 17, 2009

Ambient Temperature = 24°C; Relative humidity = 35%

Measured by: Chaoyen Lin

Medium	CW Signal (MHz)	Forward power (mW)	Measured (Normalized to 1 W)		Target	Delta (%)	Tolerance (%)
Head	835	250	1g SAR:	9.32	9.5	-1.89	±10
			10g SAR:	6.11	6.2	-1.45	

9.2. SYSTEM CHECK RESULTS FOR D1900V2

System Validation Dipole: D1900V2 SN: 5d043

Date: May 14, 2009

Ambient Temperature = 24°C; Relative humidity = 35%

Measured by: Chaoyen Lin

Medium	CW Signal (MHz)	Forward power (mW)	Measured (Normalized to 1 W)		Target	Delta (%)	Tolerance (%)
Body	1900	250	1g SAR:	39.4	39.8	-1.01	±10
			10g SAR:	20.7	20.8	-0.48	

Date: May 18, 2009

Ambient Temperature = 24°C; Relative humidity = 35%

Measured by: Chaoyen Lin

Medium	CW Signal (MHz)	Forward power (mW)	Measured (Normalized to 1 W)		Target	Delta (%)	Tolerance (%)
Head	1900	250	1g SAR:	38.7	39.7	-2.52	±10
			10g SAR:	20.1	20.5	-1.95	

Date: June 16, 2009

Ambient Temperature = 24°C; Relative humidity = 40%

Measured by: Sunny Shih

Medium	CW Signal (MHz)	Forward power (mW)	Measured (Normalized to 1 W)		Target	Delta (%)	Tolerance (%)
Head	1900	250	1g SAR:	38.3	39.7	-3.53	±10
			10g SAR:	19.9	20.5	-2.93	

9.3. SYSTEM CHECK RESULTS FOR D2450V2

System Validation Dipole: D2450V2 SN: 748

Date: June 6, 2009

Ambient Temperature = 24°C; Relative humidity = 40%

Measured by: Chaoyen Lin

Medium	CW Signal (MHz)	Forward power (mW)	Measured (Normalized to 1 W)		Target	Delta (%)	Tolerance (%)
Head	2450	250	1g SAR:	54.9	52.4	4.77	±10
			10g SAR:	25	24.0	4.17	

Date: June 8, 2009

Ambient Temperature = 24°C; Relative humidity = 40%

Measured by: Chaoyen Lin

Medium	CW Signal (MHz)	Forward power (mW)	Measured (Normalized to 1 W)		Target	Delta (%)	Tolerance (%)
Body	2450	250	1g SAR:	53.7	51.2	4.88	±10
			10g SAR:	25.1	23.7	5.91	

10. OUTPUT POWER VERIFICATION

10.1. GSM

GPRS (GMSK) - Coding Scheme: MCS4

Band	Ch No.	f (MHz)	Conducted output power (dBm)							
			1 slot	Time Average power	2 slot	Time Average power	3 slot	Time Average power	4 slot	Time Average power
GSM850	128	824.2	31.60	22.60	30.00	24.00				
	190	836.6	31.50	22.50	29.80	23.80				
	251	848.8	31.60	22.60	30.10	24.10				
GSM1900	512	1850.2	28.40	19.40	27.80	21.80				
	661	1880	29.30	20.30	27.70	21.70				
	810	1909.8	29.40	20.40	27.70	21.70				

EGPRS (8PSK) - Coding Scheme: MCS9

Band	Ch No.	f (MHz)	Conducted output power (dBm)							
			1 slot	Time Average power	2 slot	Time Average power	3 slot	Time Average power	4 slot	Time Average power
GSM850	128	824.2	27.10	18.10	26.50	20.50				
	190	836.6	26.80	17.80	26.50	20.50				
	251	848.8	27.00	18.00	26.50	20.50				
GSM1900	512	1850.2	26.10	17.10	26.00	20.00				
	661	1880	26.10	17.10	26.00	20.00				
	810	1909.8	26.20	17.20	26.00	20.00				

10.2. UMTS RELEASE 99

The following 4 Sub-tests were completed according to procedures in section 5.2 of 3GPP TS34.121. A summary of these settings are illustrated below:

	Mode	Rel99
	Subtest	-
WCDMA General Settings	Loopback Mode	Test Mode 1
	Rel99 RMC	12.2kbps RMC
	HSDPA FRC	Not Applicable
	HSUPA Test	Not Applicable
	Power Control Algorithm	Algorithm2
	β_c	Not Applicable
	β_d	Not Applicable
	β_{ec}	Not Applicable
	β_c/β_d	8/15
	β_{hs}	Not Applicable
β_{ed}	Not Applicable	

Results

Rel 99 (12.2kps RMC)

Band	Mode	UL Ch No.	DL Ch No.	f (MHz)	O/P Power (dBm)
UMTS850 (Band V)	Rel 99 12.2kps RMC	4132	4357	826.4	23.26
		4183	4408	836.6	23.34
		4233	4458	846.6	23.64
UMTS1900 (Band II)	Rel 99 12.2kps RMC	9262	9662	1852.4	23.02
		9400	9800	1880.0	23.29
		9538	9938	1907.6	22.95

10.3. UMTS HSDPA

The following 4 Sub-tests were completed according to Release 5 procedures in section 5.2 of 3GPP TS34.121. A summary of these settings are illustrated below:

	Mode	Rel 5 HSDPA	Rel 5 HSDPA	Rel 5 HSDPA	Rel 5 HSDPA
	Subtest	1	2	3	4
WCDMA General Settings	Loopback Mode	Test Mode 1			
	Rel99 RMC	12.2kbps RMC			
	HSDPA FRC	H-Set1			
	HSUPA Test	Not Applicable			
	Power Control Algorithm	Algorithm 2			
	β_c	2/15	12/15	15/15	15/15
	β_d	15/15	15/15	8/15	4/15
	Bd (SF)	64			
	β_{ec}	-	-	-	-
	β_c/β_d	2/15	12/15	15/8	15/4
	β_{hs}	4/15	24/15	30/15	30/15
	β_{ed}	Not Applicable			
	0	1	1.5	1.5	
HSDPA Specific Settings	DACK	8			
	DNAK	8			
	DCQI	8			
	Ack-Nack repetition factor	3			
	CQI Feedback (Table 5.2B.4)	4ms			
	CQI Repetition Factor (Table 5.2B.4)	2			
	Ahs = β_{hs}/β_c	30/15			

Results

Rel 6 HSDPA

Band	Mode	UL Ch No.	DL Ch No.	f (MHz)	O/P Power (dBm)
UMTS850 (Band V)	Subtest 1	4132	4357	826.4	23.30
		4183	4408	836.6	23.43
		4233	4458	846.6	23.72
	Subtest 2	4132	4357	826.4	22.24
		4183	4408	836.6	22.39
		4233	4458	846.6	22.63
	Subtest 3	4132	4357	826.4	22.29
		4183	4408	836.6	22.40
		4233	4458	846.6	22.67
	Subtest 4	4132	4357	826.4	22.26
		4183	4408	836.6	22.40
		4233	4458	846.6	22.73
UMTS1900 (Band II)	Subtest 1	9262	9662	1852.4	22.30
		9400	9800	1880.0	22.84
		9538	9938	1907.6	22.54
	Subtest 2	9262	9662	1852.4	21.33
		9400	9800	1880.0	21.93
		9538	9938	1907.6	21.50
	Subtest 3	9262	9662	1852.4	21.35
		9400	9800	1880.0	21.96
		9538	9938	1907.6	21.58
	Subtest 4	9262	9662	1852.4	21.43
		9400	9800	1880.0	21.96
		9538	9938	1907.6	21.53

10.4. WIFI

The cable assembly insertion loss of 20.5dB (including 20dB pad and 0.5dB cable) was entered as an offset in the power meter to allow for direct reading of power.

RESULTS

802.11b

Ch. No.	f (MHz)	Average Conducted power (dBm)
1	2412	15.65
6	2437	15.87
11	2462	15.92

11. SUMMARY OF TEST RESULTS

According to KDB 447498 item 4) c) iii) (1), Hand SAR is required for hand-held and hand-operated devices with output power $> 1000 \cdot [f_{(GHz)}]^{-0.5}$ mW that are designed with the hand operating closer than 5 cm from the antenna during normal use.

Based on sec.10. Output power verification, No Hand SAR is required due to maximum output power $< 1000 \cdot [f_{(GHz)}]^{-0.5}$ mW, see table below for details.

	f (GHz)	Maximum power		Hand SAR Limit
		dBm	mW	$1000 \cdot [f_{(GHz)}]^{-0.5}$ (mW)
GSM850	0.85	24.10	257	1084.65
UMTS Band II	1.88	23.29	213	729.32

11.1. WORST-CASE CONFIGURATIONS

A preliminary testing for both QWERTY and numeric models respectively for CN4 and CN4e was performed. The result shows the numeric models are the representative models as worst case for both CN4 and CN4e.

11.2. UMTS BAND II (1900 MHZ)

11.2.1. LEFT HAND SIDE – CN4e

Test position	Mode	UL Ch No.	DL Ch No.	f (MHz)	1g SAR (mW/g)	Limit (mW/g)
Touch	Rel 99 12.2kps RMC	9262	9662	1852.4		1.6
		9400	9800	1880.0	0.340	
		9538	9938	1907.6		
Tilt (15°)	Rel 99 12.2kps RMC	9262	9662	1852.4		1.6
		9400	9800	1880.0	0.468	
		9538	9938	1907.6		

11.2.2. RIGHT HAND SIDE – CN4e

Test position	Mode	UL Ch No.	DL Ch No.	f (MHz)	1g SAR (mW/g)	Limit (mW/g)
Touch	Rel 99 12.2kps RMC	9262	9662	1852.4		1.6
		9400	9800	1880.0	0.363	
		9538	9938	1907.6		
Tilt (15°)	Rel 99 12.2kps RMC	9262	9662	1852.4		1.6
		9400	9800	1880.0	0.684	
		9538	9938	1907.6		
	w/ standard battery pack (AB15)	9400	9800	1880.0	0.553	

11.2.3. RIGHT HAND SIDE – CN4

Test position	Mode	UL Ch No.	DL Ch No.	f (MHz)	1g SAR (mW/g)	Limit (mW/g)
Tilt (15°)	Rel 99 12.2kps RMC	9262	9662	1852.4		1.6
		9400	9800	1880.0	0.482	
		9538	9938	1907.6		

11.2.4. BODY WORN – CN4e

Test position	Mode	Sep. dist. (cm)	UL Ch No.	DL Ch No.	f (MHz)	1g SAR (mW/g)	Limit (mW/g)
LCD down	Rel 99 12.2kps RMC	With Holster	9262	9662	1852.4	0.708	1.6
			9400	9800	1880.0	0.939	
			9538	9938	1907.6	0.987	
		w/ standard battery pack (AB15)	9538	9938	1907.6	0.937	
LCD up	Rel 99 12.2kps RMC	With Holster	9262	9662	1852.4		1.6
			9400	9800	1880.0	0.058	
			9538	9938	1907.6		

11.2.5. BODY WORN – CN4

Test position	Mode	Sep. dist. (cm)	UL Ch No.	DL Ch No.	f (MHz)	1g SAR (mW/g)	Limit (mW/g)
LCD down	Rel 99 12.2kps RMC	With Holster	9262	9662	1852.4		1.6
			9400	9800	1880.0		
			9538	9938	1907.6	0.602	

11.3. GSM1900

11.3.1. LEFT HAND SIDE – CN4e

Test position	Mode	Ch No.	f (MHz)	1g SAR (mW/g)	Limit (mW/g)
Touch	GSM	512	1850.2		1.6
		661	1880.0	0.117	
		810	1909.8		
Tilt (15°)	GSM	512	1850.2		1.6
		661	1880.0	0.161	
		810	1909.8		

11.3.2. RIGHT HAND SIDE – CN4e

Test position	Mode	Ch No.	f (MHz)	1g SAR (mW/g)	Limit (mW/g)
Touch	GSM	512	1850.2		1.6
		661	1880.0	0.114	
		810	1909.8		
Tilt (15°)	GSM	512	1850.2		1.6
		661	1880.0	0.168	
		810	1909.8		

11.3.3. BODY WORN – CN4e

Test position	Mode	Sep. dist. (cm)	Ch No.	f (MHz)	1g SAR (mW/g)	Limit (mW/g)
LCD down	GPRS 2 slots	With Holster	512	1850.2		1.6
			661	1880.0	0.416	
			810	1909.8		
LCD up	GPRS 2 slots	With Holster	512	1850.2		1.6
			661	1880.0	0.032	
			810	1909.8		

11.4. UMTS BAND V (850 MHZ)

11.4.1. LEFT HAND SIDE – CN4e

Test position	Mode	UL Ch No.	DL Ch No.	f (MHz)	1g SAR (mW/g)	Limit (mW/g)
Touch	Rel 99 12.2kps RMC	4132	4357	826.4		1.6
		4182	4407	836.4	0.383	
		4233	4458	846.6		
Tilt (15°)	Rel 99 12.2kps RMC	4132	4357	826.4		1.6
		4183	4408	836.6	0.415	
		4233	4458	846.6		

11.4.2. RIGHT HAND SIDE – CN4e

Test position	Mode	UL Ch No.	DL Ch No.	f (MHz)	1g SAR (mW/g)	Limit (mW/g)
Touch	Rel 99 12.2kps RMC	4132	4357	826.4		1.6
		4182	4407	836.4	0.391	
		4233	4458	846.6		
Tilt (15°)	Rel 99 12.2kps RMC	4132	4357	826.4		1.6
		4183	4408	836.6	0.492	
		4233	4458	846.6		

11.4.3. BODY WORN – CN4e

Test position	Mode	Sep. dist. (cm)	UL Ch No.	DL Ch No.	f (MHz)	1g SAR (mW/g)	Limit (mW/g)
LCD up	Rel 99 12.2kps RMC	With Holster	4132	4357	826.4		1.6
			4183	4408	836.6	0.139	
			4233	4458	846.6		
LCD down	Rel 99 12.2kps RMC	With Holster	4132	4357	826.4		1.6
			4183	4408	836.6	0.351	
			4233	4458	846.6		

11.4.4. BODY WORN – CN4

Test position	Mode	Sep. dist. (cm)	UL Ch No.	DL Ch No.	f (MHz)	1g SAR (mW/g)	Limit (mW/g)
LCD down	Rel 99 12.2kps RMC	With Holster	4132	4357	826.4		1.6
			4182	4407	836.6	0.350	
			4233	4458	846.6		

11.5. GSM850

11.5.1. LEFT HAND SIDE – CN4e

Test position	Mode	Ch No.	f (MHz)	1g SAR (mW/g)	Limit (mW/g)
Touch	GSM	128	824.2		1.6
		190	836.6	0.511	
		251	848.8		
Tilt (15°)	GSM	128	824.2		1.6
		190	836.6	0.502	
		251	848.8		

11.5.2. LEFT HAND SIDE – CN4

Test position	Mode	Ch No.	f (MHz)	1g SAR (mW/g)	Limit (mW/g)
Touch	GSM	190	836.6	0.365	1.6

11.5.3. RIGHT HAND SIDE – CN4e

Test position	Mode	Ch No.	f (MHz)	1g SAR (mW/g)	Limit (mW/g)
Touch	GSM	128	824.2		1.6
		190	836.6	0.345	
		251	848.8		
Tilt (15°)	GSM	128	824.2		1.6
		190	836.6	0.423	
		251	848.8		

11.5.4. BODY WORN – CN4e

Test position	Mode	Sep. dist. (cm)	Ch No.	f (MHz)	1g SAR (mW/g)	Limit (mW/g)
LCD Face down	GSPS 2 slots	With Holster	128 (Low)	824.2		1.6
			190 (Mid)	836.6	0.341	
			251 (High)	848.8		
LCD Face up	GSPS 2 slots	With Holster	128 (Low)	824.2		1.6
			190 (Mid)	836.6	0.141	
			251 (High)	848.8		

11.6. WIFI

11.6.1. LEFT HAND SIDE – CN4

Test position	Mode	Ch No.	f (MHz)	1g SAR (mW/g)	Limit (mW/g)
Touch	802.11b	1	2412		1.6
		6	2437	0.784	
		11	2462		
Tilt (15°)	802.11b	1	2412		1.6
		6	2437	0.637	
		11	2462		

11.6.2. RIGHT HAND SIDE – CN4

Test position	Mode	Ch No.	f (MHz)	1g SAR (mW/g)	Limit (mW/g)
Touch	802.11b	1	2412		1.6
		6	2437	0.366	
		11	2462		
Tilt (15°)	802.11b	1	2412		1.6
		6	2437	0.383	
		11	2462		

11.6.3. LEFT HAND SIDE – CN4e

Test position	Mode	Ch No.	f (MHz)	1g SAR (mW/g)	Limit (mW/g)
Touch	802.11b	1	2412		1.6
		6	2437	0.399	
		11	2462		

11.6.4. BODY WORN – CN4

Test position	Mode	Sep. dist. (cm)	Ch No.	f (MHz)	1g SAR	Limit (mW/g)
					(mW/g)	
Face down	802.11b	With Holster	1	2412		1.6
			6	2437	0.006	
			11	2462		
Face up	802.11b	With Holster	1	2412		1.6
			6	2437	0.078	
			11	2462		

11.6.5. BODY WORN – CN4e

Test position	Mode	Sep. dist. (cm)	Ch No.	f (MHz)	1g SAR	Limit (mW/g)
					(mW/g)	
Face up	802.11b	With Holster	1	2412		1.6
			6	2437	0.045	
			11	2462		

12. KDB 648474 SAR HANDSETS MULTI XMITER ASSESSMENT

EUT Description: Heavy-Duty Handheld PDA-Type Device W/ Dual Band GSM/WCDMA/HSDPA, with WiFi and Bluetooth embedded.

Co-located Tx:

- WWAN can transmit simultaneously with 802.11g
- WWAN can transmit simultaneously with Bluetooth
- WiFi (802.11g) cannot transmit simultaneously with Bluetooth

Antenna Separation distances:

- 2.2 cm - WWAM antenna-to-WiFi (802.11g)
- 1.2 cm - WWAN antenna-to-Bluetooth antenna
- 3.9 cm - WiFi (802.11g)-to-Bluetooth antenna

Separation distances between peaks SAR in area scans: See page 36 – 38 for details.

Highest 1-g SAR:

Test position	Mode	1g SAR	Sum of the 1-g SAR
Head (LHS Touch)	802.11b	0.784 mW/g	1.295 mW/g
	WWAN	0.511 mW/g	
Head (RHS Tilt)	WWAN	0.684 mW/g	1.067 mW/g
	802.11b	0.383 mW/g	
Body (LCD down)	WWAN	0.987 mW/g	0.993 mW/g
	802.11b	0.006 mW/g	

Bluetooth: Bluetooth:

Conducted average power is below Pref/12mW, stand alone SAR evaluation is not required.

SAR to Peak Location Separation Ratio: WWAM antenna-to-WiFi (802.11g):

- Head - Left hand side (LHS) touch position: 0.863 (1.295/1.5), > 0.3
- Head - Right hand side (RHS) tilt position: 1.067 (1.067/1.0), > 0.3
- Body worn with 2 cm separation distance: 0.28 (0.993/3.5), < 0.3

Simultaneous TX SAR:

No

Yes. For the following test configurations:

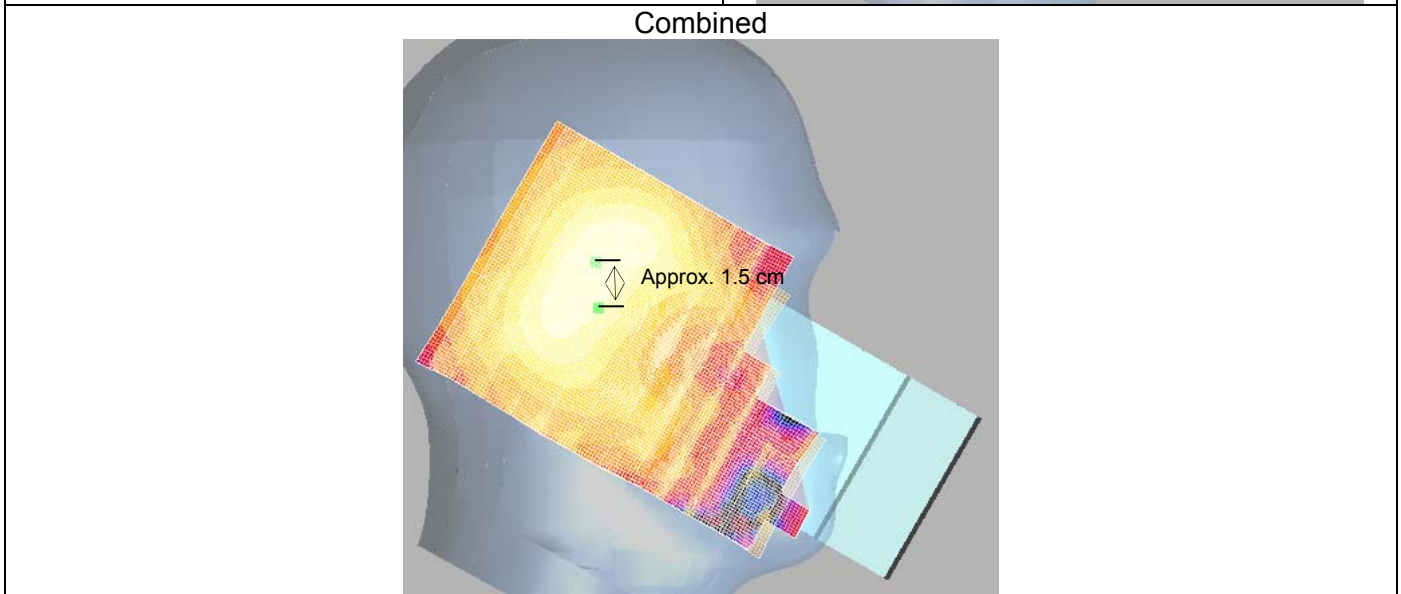
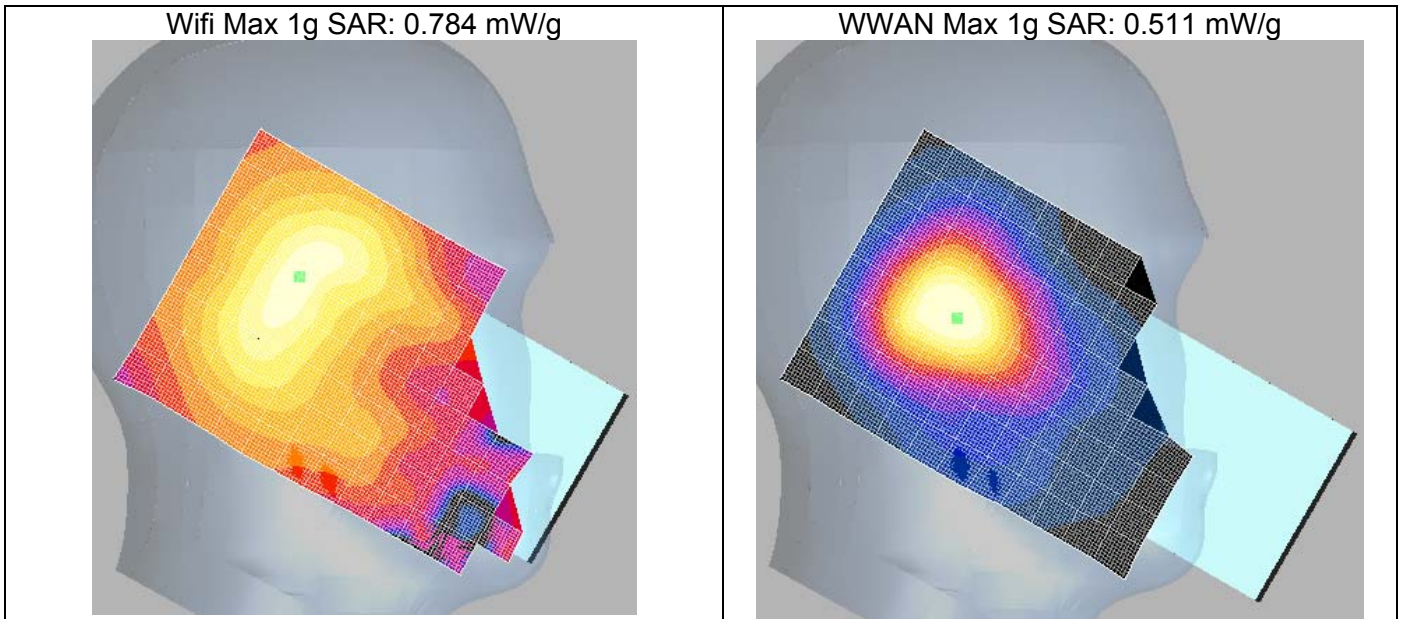
- Left hand side (LHS) touch position
- Right hand side (RHS) tilt position

Simultaneous SAR Test Results:

Test position	Multi Band	Results (mW/g)
Head (LHS Touch)	WiFi - WWAN	1.03 mW/g
Head (RHS Tilt)	WWAN - WiFi	0.873 mW/g

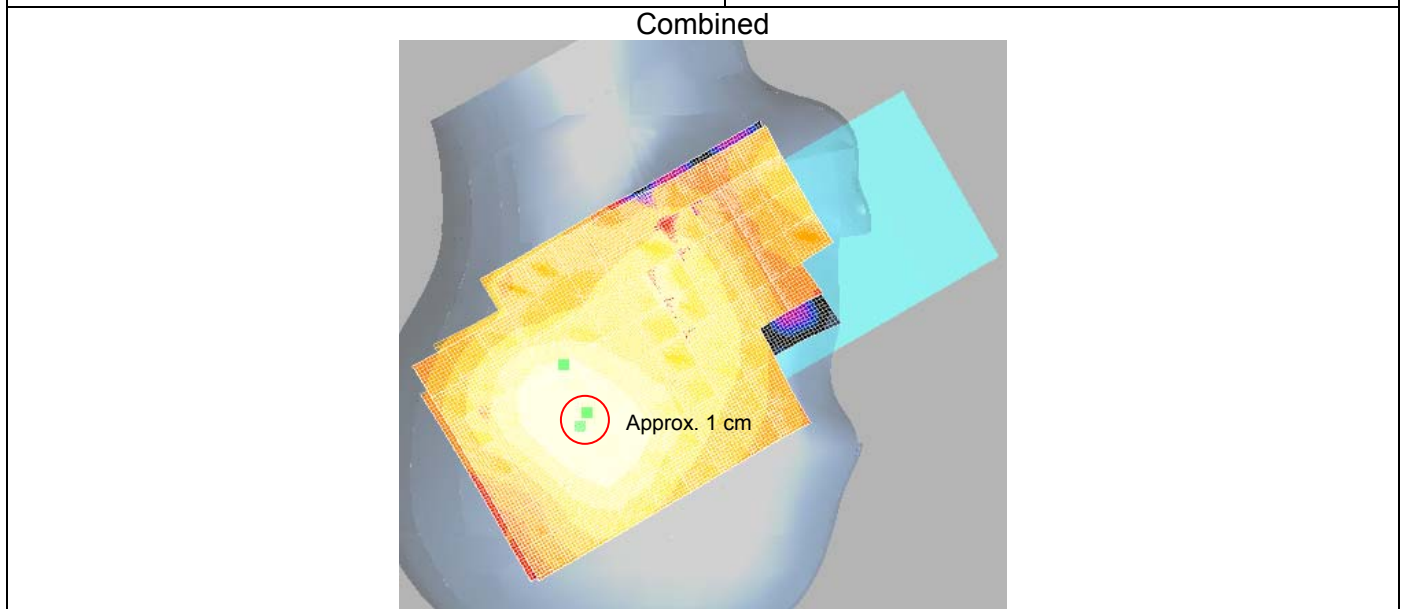
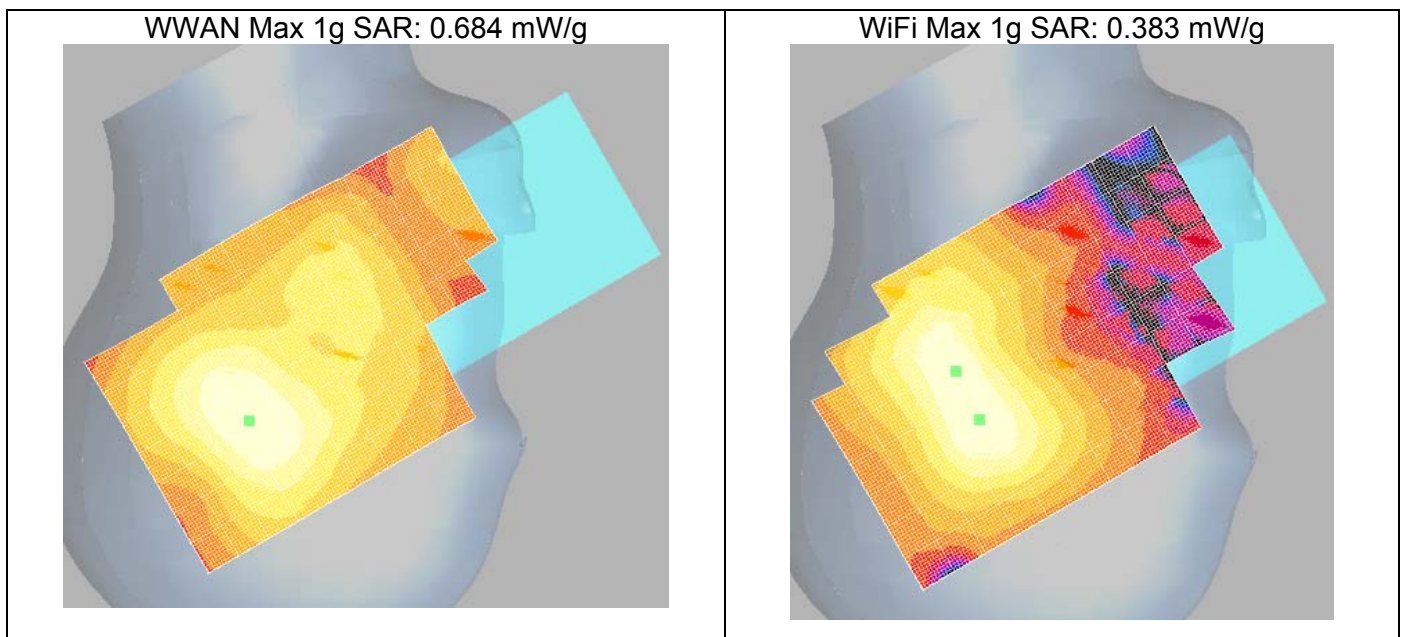
See attachment 2-6 for multi band results

Separation distances between Peaks SAR in area scans for Head (LHS touch) position



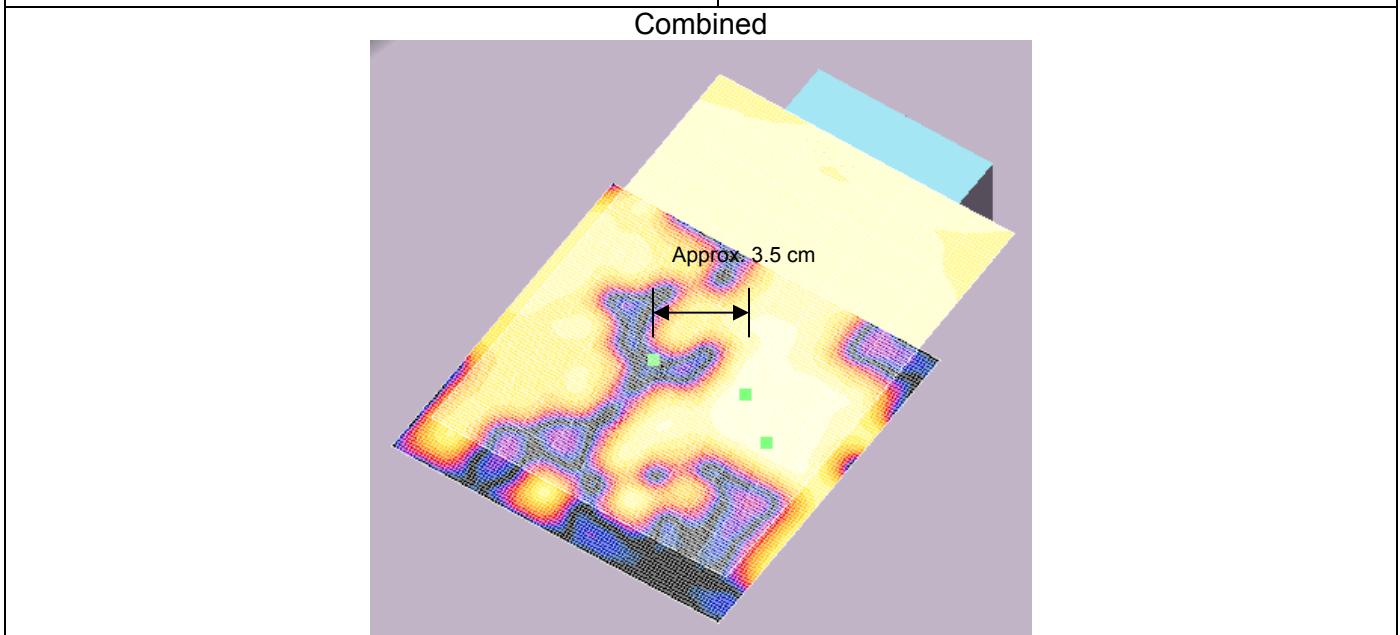
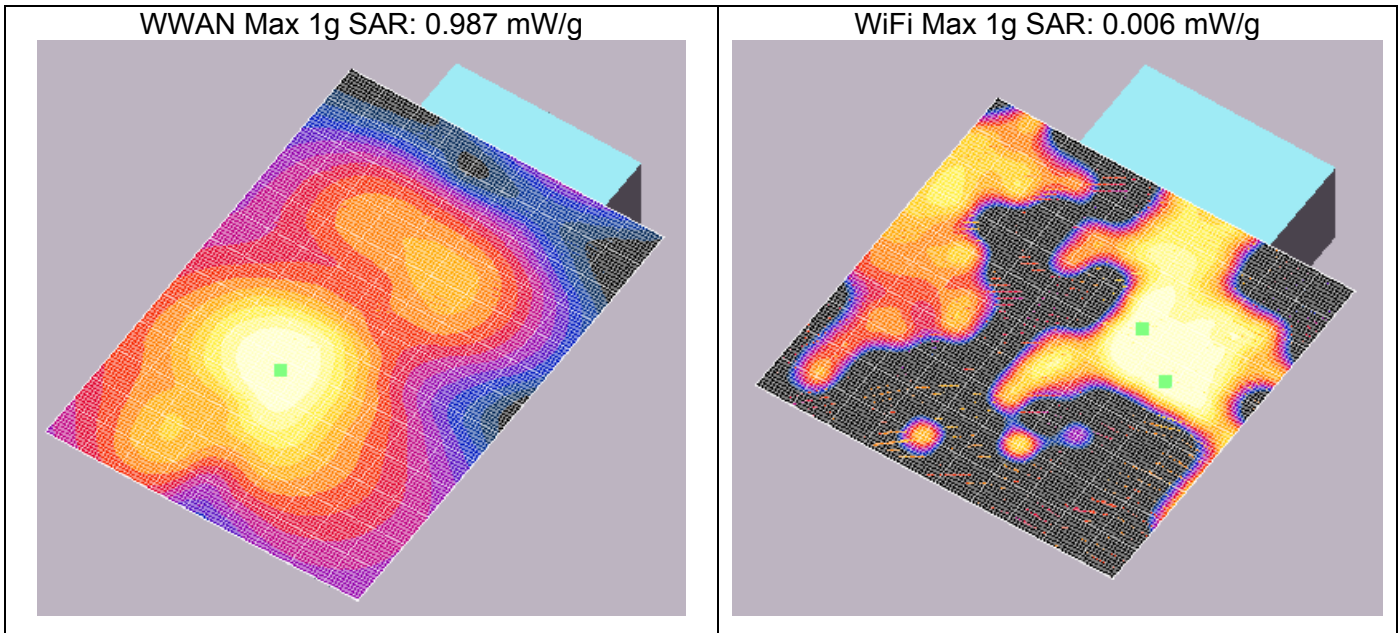
The sum of the 1g SAR = 1.295 mW/g.
Separation distances between peaks SAR in area scans = 1.5 cm
SAR to Peak location separation ratio: 0.863 (1.295 / 1.5), > 0.3

Separation distances between Peaks SAR in area scans for Head (RHS Tilt) position



The sum of the 1g SAR = 1.067mW/g
Separation distances between peaks SAR in area scans = 1.0 cm
SAR to Peak location separation ratio: 1.067 (1.067 / 1.0), > 0.3

Separation distances between Peaks SAR in area scans for Body (LCD down) position



The sum of the 1g SAR = 0.993mW/g
Separation distances between peaks SAR in area scans = 3.0cm
SAR to Peak location separation ratio: 0.28 (0.993 / 3.5), < 0.3

13. WORST-CASE SAR TEST PLOTS

WORST-CASE SAR PLOT for GSM/UMTS1900 HEAD POSITION

Date/Time: 5/18/2009 5:36:33 PM

Test Laboratory: Compliance Certification Services

UMTS 1900 RHS With CN4e

DUT: Intermec; Type: CN4e; Serial: 03590990180

Communication System: UMTS Band II; Frequency: 1880 MHz; Duty Cycle: 1:1
Medium parameters used: $f = 1880$ MHz; $\sigma = 1.39$ mho/m; $\epsilon_r = 41.7$; $\rho = 1000$ kg/m³
Phantom section: Right Section

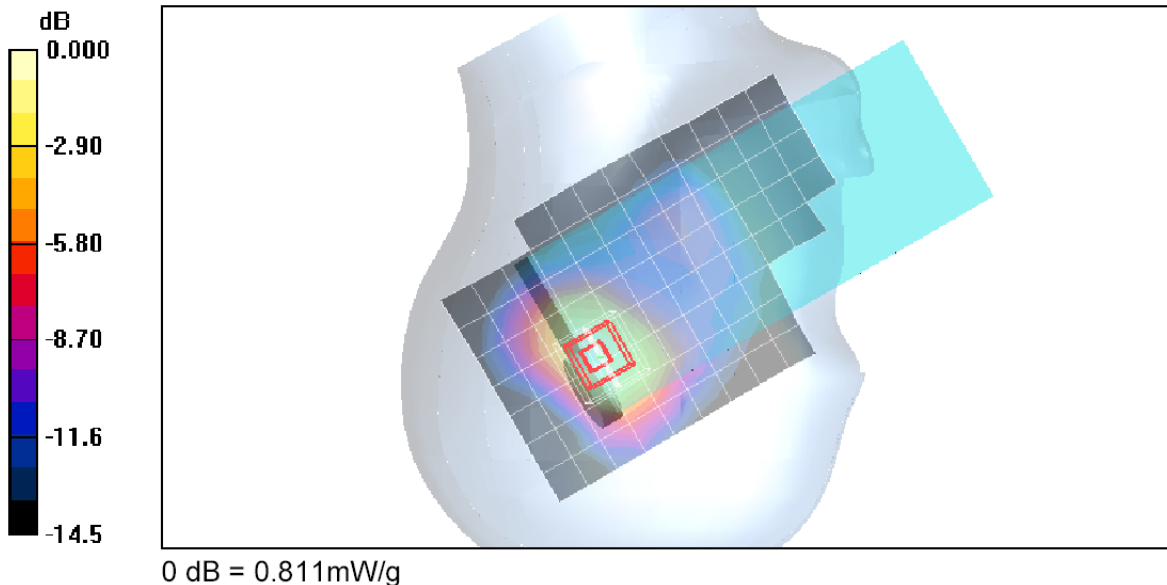
Room Ambient Temperature: 24.0 deg. C; Liquid Temperature: 23.0 deg. C

DASY4 Configuration:

- Area Scan setting - Find Secondary Maximum Within: 2.0 dB and with a peak SAR value greater than 0.0012W/kg
- Probe: EX3DV4 - SN3686; ConvF(7.51, 7.51, 7.51); Calibrated: 3/23/2009
- Sensor-Surface: 3mm (Mechanical Surface Detection)
- Electronics: DAE3 Sn427; Calibrated: 10/20/2008
- Phantom: SAM 2 (Twin); Type: SAM 2; Serial: 1050
- Measurement SW: DASY4, V4.7 Build 80; Postprocessing SW: SEMCAD, V1.8 Build 186

R-Tilt - UMTS850 M-ch/Area Scan (9x13x1): Measurement grid: dx=15mm, dy=15mm
Maximum value of SAR (measured) = 0.762 mW/g

R-Tilt - UMTS850 M-ch/Zoom Scan (7x7x9)/Cube 0: Measurement grid: dx=5mm, dy=5mm, dz=3mm
Reference Value = 17.1 V/m; Power Drift = 0.363 dB
Peak SAR (extrapolated) = 1.10 W/kg
SAR(1 g) = 0.684 mW/g; SAR(10 g) = 0.403 mW/g
Maximum value of SAR (measured) = 0.811 mW/g



WORST-CASE SAR PLOT for GSM/UMTS1900 BODY POSITION

Date/Time: 5/15/2009 1:42:01 PM

Test Laboratory: Compliance Certification Services

UMTS1900 Body CN4e

DUT: Intermec; Type: CN4e; Serial: 03590990180

Communication System: UMTS Band II; Frequency: 1907.6 MHz; Duty Cycle: 1:1
Medium parameters used (interpolated): $f = 1907.6$ MHz; $\sigma = 1.54$ mho/m; $\epsilon_r = 53.4$; $\rho = 1000$ kg/m³
Phantom section: Flat Section

Room Ambient Temperature: 24.0 deg. C; Liquid Temperature: 23.0 deg. C

DASY4 Configuration:

- Area Scan setting - Find Secondary Maximum Within: 2.0 dB and with a peak SAR value greater than 0.0012W/kg
- Probe: EX3DV4 - SN3686; ConvF(6.85, 6.85, 6.85); Calibrated: 3/23/2009
- Sensor-Surface: 3mm (Mechanical Surface Detection)
- Electronics: DAE3 Sn427; Calibrated: 10/20/2008
- Phantom: Flat Phantom ELI4.0; Type: QDOVA001BA; Serial: SN:1003
- Measurement SW: DASY4, V4.7 Build 80; Postprocessing SW: SEMCAD, V1.8 Build 186

Face down, W/holster R99 H-ch/Area Scan (10x14x1): Measurement grid: dx=15mm, dy=15mm

Info: [Interpolated medium parameters used for SAR evaluation.](#)

Maximum value of SAR (measured) = 1.05 mW/g

Face down, W/holster R99 H-ch/Zoom Scan (7x7x9)/Cube 0: Measurement grid: dx=5mm, dy=5mm, dz=3mm

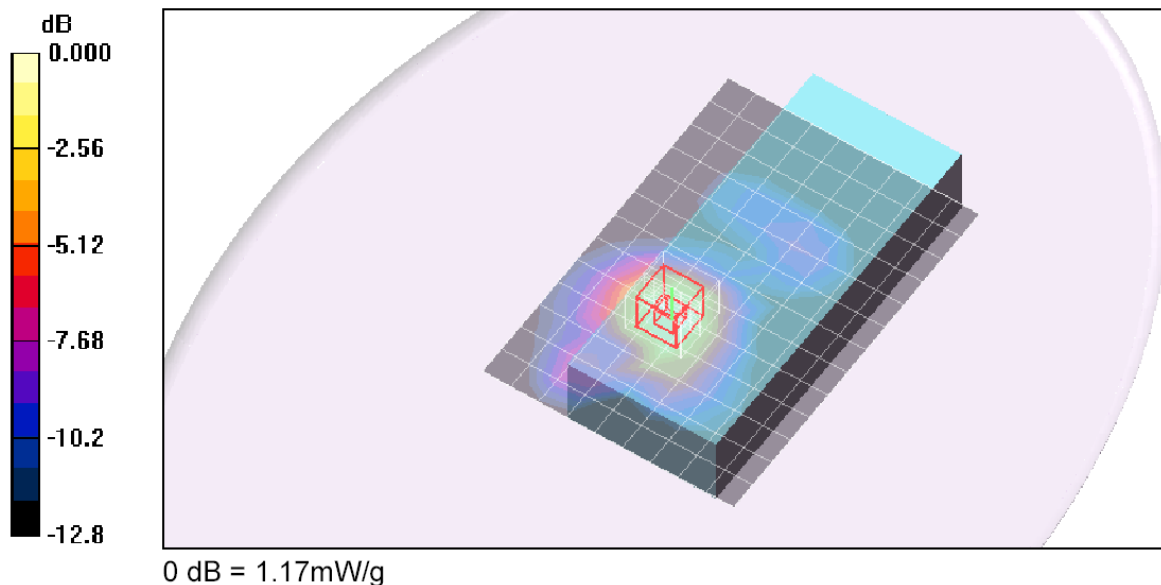
Reference Value = 10.4 V/m; Power Drift = -0.419 dB

Peak SAR (extrapolated) = 1.52 W/kg

SAR(1 g) = 0.987 mW/g; SAR(10 g) = 0.607 mW/g

Info: [Interpolated medium parameters used for SAR evaluation.](#)

Maximum value of SAR (measured) = 1.17 mW/g



WORST-CASE SAR PLOT for GSM/UMTS850 - HEAD POSITION

Date/Time: 5/17/2009 10:49:02 AM

Test Laboratory: Compliance Certification Services

GSM850 - Left Hand Side CN4e

DUT: Intermec; Type: CN4e; Serial: 03590990180

Communication System: GSM850; Frequency: 836.6 MHz; Duty Cycle: 1:8
Medium parameters used (interpolated): $f = 836.6$ MHz; $\sigma = 0.873$ mho/m; $\epsilon_r = 43.4$; $\rho = 1000$ kg/m³
Phantom section: Left Section

Room Ambient Temperature: 24.0 deg. C; Liquid Temperature: 23.0 deg. C

DASY4 Configuration:

- Area Scan setting - Find Secondary Maximum Within: 2.0 dB and with a peak SAR value greater than 0.0012W/kg
- Probe: EX3DV4 - SN3686; ConvF(8.72, 8.72, 8.72); Calibrated: 3/23/2009
- Sensor-Surface: 3mm (Mechanical Surface Detection)
- Electronics: DAE3 Sn427; Calibrated: 10/20/2008
- Phantom: SAM 2 (Twin); Type: SAM 2; Serial: 1050
- Measurement SW: DASY4, V4.7 Build 80; Postprocessing SW: SEMCAD, V1.8 Build 186

L-Touch - M-ch/Area Scan (9x12x1): Measurement grid: dx=15mm, dy=15mm

Info: [Interpolated medium parameters used for SAR evaluation.](#)

Maximum value of SAR (measured) = 0.556 mW/g

L-Touch - M-ch/Zoom Scan (7x7x9)/Cube 0: Measurement grid: dx=5mm, dy=5mm, dz=3mm

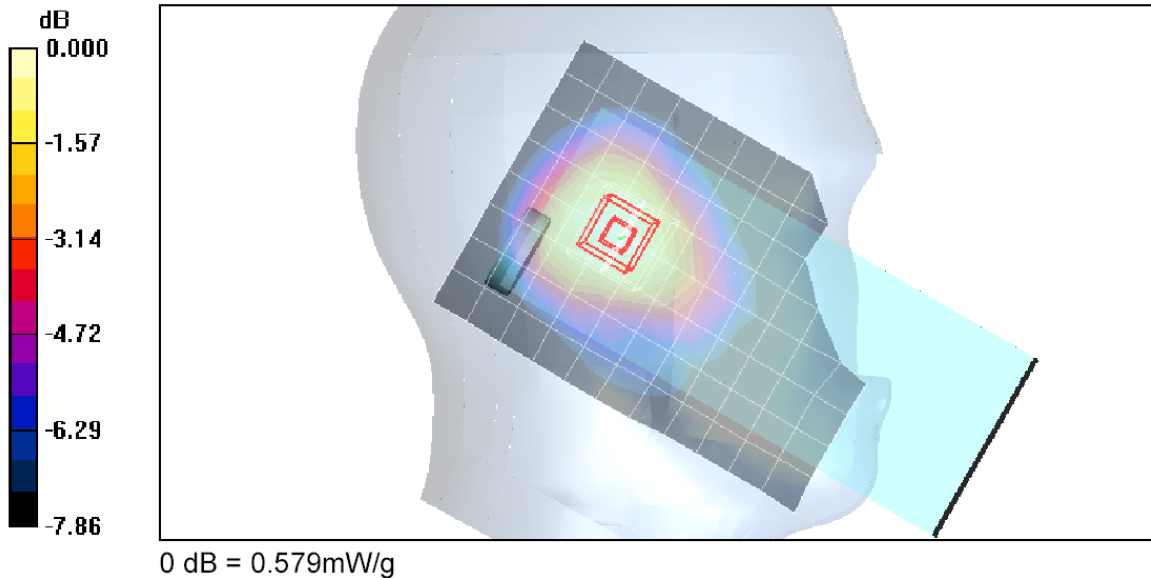
Reference Value = 24.4 V/m; Power Drift = -0.062 dB

Peak SAR (extrapolated) = 0.699 W/kg

SAR(1 g) = 0.511 mW/g; SAR(10 g) = 0.365 mW/g

Info: [Interpolated medium parameters used for SAR evaluation.](#)

Maximum value of SAR (measured) = 0.579 mW/g



WORST-CASE SAR PLOT for GSM/UMTS850 - BODY POSITION

Date/Time: 5/16/2009 3:27:40 PM

Test Laboratory: Compliance Certification Services

UMTS850 Body CN4e

DUT: Intermec; Type: CN4e; Serial: 03590990180

Communication System: UMTS850; Frequency: 836.4 MHz; Duty Cycle: 1:1
Medium parameters used (interpolated): $f = 836.4$ MHz; $\sigma = 0.952$ mho/m; $\epsilon_r = 53.4$; $\rho = 1000$ kg/m³
Phantom section: Flat Section

Room Ambient Temperature: 24.0 deg. C; Liquid Temperature: 23.0 deg. C

- DASY4 Configuration:
- Area Scan setting - Find Secondary Maximum Within: 2.0 dB and with a peak SAR value greater than 0.0012W/kg
 - Probe: EX3DV4 - SN3686; ConvF(8.7, 8.7, 8.7); Calibrated: 3/23/2009
 - Sensor-Surface: 3mm (Mechanical Surface Detection)
 - Electronics: DAE3 Sn427; Calibrated: 10/20/2008
 - Phantom: SAM 2 (Twin); Type: SAM 2; Serial: 1050
 - Measurement SW: DASY4, V4.7 Build 80; Postprocessing SW: SEMCAD, V1.8 Build 186

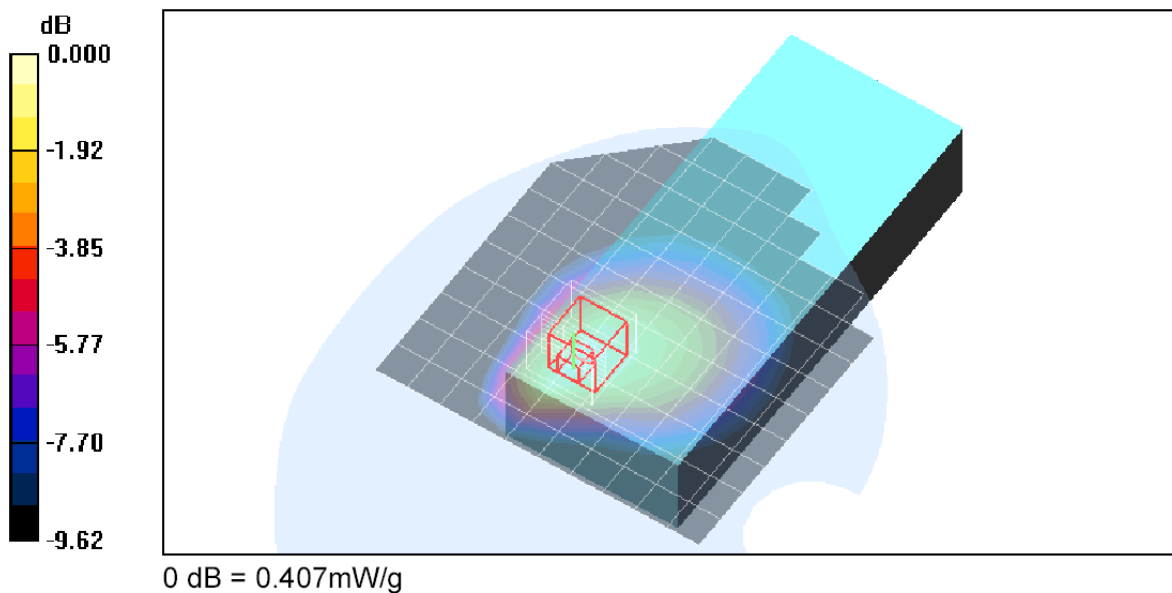
Face down, HSPA Sub-test 5 M-ch/Area Scan (11x14x1): Measurement grid: dx=15mm, dy=15mm

Info: [Interpolated medium parameters used for SAR evaluation.](#)
Maximum value of SAR (measured) = 0.407 mW/g

Face down, HSPA Sub-test 5 M-ch/Zoom Scan (7x7x9)/Cube 0: Measurement grid: dx=5mm, dy=5mm, dz=3mm

Reference Value = 12.7 V/m; Power Drift = 0.445 dB
Peak SAR (extrapolated) = 0.526 W/kg
SAR(1 g) = 0.351 mW/g; SAR(10 g) = 0.234 mW/g

Info: [Interpolated medium parameters used for SAR evaluation.](#)



WORST-CASE SAR PLOT for WIFI - HEAD POSITION

Date/Time: 6/6/2009 6:02:55 PM

Test Laboratory: Compliance Certification Services

WiFi - LHS CN4

DUT: Intermec; Type: CN4; Serial: 03590990044

Communication System: 802.11bg; Frequency: 2437 MHz; Duty Cycle: 1:1
Medium parameters used (interpolated): $f = 2437$ MHz; $\sigma = 1.87$ mho/m; $\epsilon_r = 39.4$; $\rho = 1000$ kg/m³
Phantom section: Left Section

Room Ambient Temperature: 24.0 deg. C; Liquid Temperature: 23.0 deg. C

DASY4 Configuration:

- Area Scan setting - Find Secondary Maximum Within: 2.0 dB and with a peak SAR value greater than 0.0012W/kg
- Probe: EX3DV4 - SN3686; ConvF(6.81, 6.81, 6.81); Calibrated: 3/23/2009
- Sensor-Surface: 3mm (Mechanical Surface Detection)
- Electronics: DAE3 Sn427; Calibrated: 10/20/2008
- Phantom: SAM 2 (Twin); Type: SAM 2; Serial: 1050
- Measurement SW: DASY4, V4.7 Build 80; Postprocessing SW: SEMCAD, V1.8 Build 186

L-Touch - M-ch/Area Scan (9x13x1): Measurement grid: dx=15mm, dy=15mm

[Info: Interpolated medium parameters used for SAR evaluation.](#)

Maximum value of SAR (measured) = 1.01 mW/g

L-Touch - M-ch/Zoom Scan (7x7x9)/Cube 0: Measurement grid: dx=5mm, dy=5mm, dz=3mm

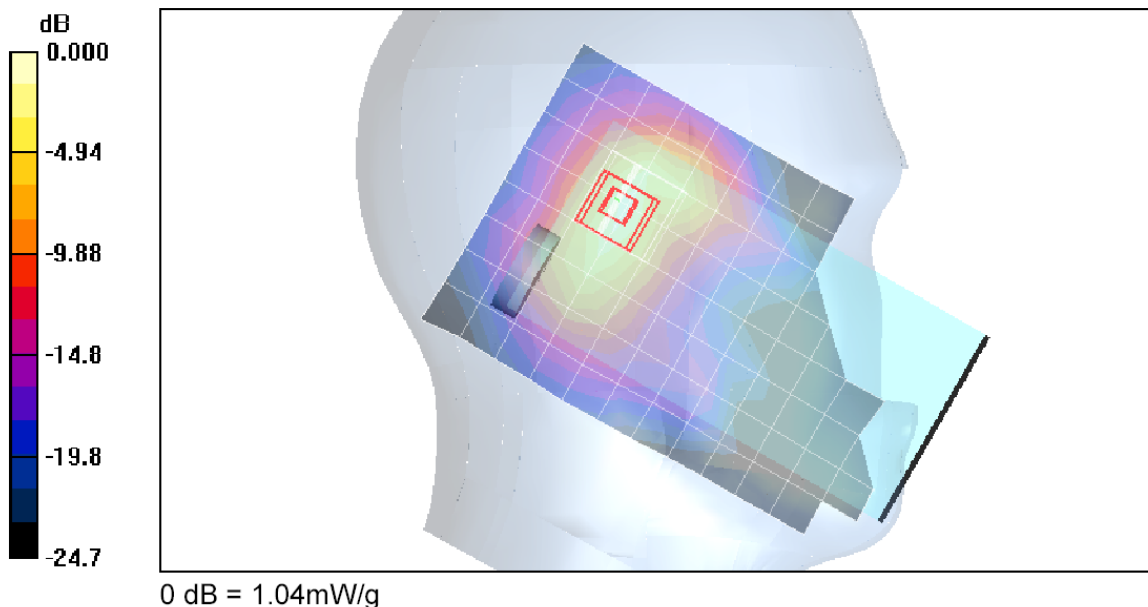
Reference Value = 19.1 V/m; Power Drift = -0.123 dB

Peak SAR (extrapolated) = 2.00 W/kg

SAR(1 g) = 0.784 mW/g; SAR(10 g) = 0.319 mW/g

[Info: Interpolated medium parameters used for SAR evaluation.](#)

Maximum value of SAR (measured) = 1.04 mW/g



WORST-CASE SAR PLOT for WIFI - BODY POSITION

Date/Time: 6/8/2009 7:06:50 PM

Test Laboratory: Compliance Certification Services

WiFi Body CN4

DUT: Intermec; Type: CN4; Serial: 03590990040

Communication System: 802.11bg; Frequency: 2437 MHz; Duty Cycle: 1:1
Medium parameters used (interpolated): $f = 2437$ MHz; $\sigma = 1.9$ mho/m; $\epsilon_r = 52$; $\rho = 1000$ kg/m³
Phantom section: Flat Section

Room Ambient Temperature: 24.0 deg. C; Liquid Temperature: 23.0 deg. C

DASY4 Configuration:

- Area Scan setting - Find Secondary Maximum Within: 2.0 dB and with a peak SAR value greater than 0.0012W/kg
- Probe: EX3DV4 - SN3686; ConvF(6.48, 6.48, 6.48); Calibrated: 3/23/2009
- Sensor-Surface: 3mm (Mechanical Surface Detection)
- Electronics: DAE3 Sn427; Calibrated: 10/20/2008
- Phantom: Flat Phantom ELI4.0; Type: QDOVA001BA; Serial: SN:1003
- Measurement SW: DASY4, V4.7 Build 80; Postprocessing SW: SEMCAD, V1.8 Build 186

Face up, W/holster - M-ch/Area Scan (10x11x1): Measurement grid: dx=15mm, dy=15mm

[Info: Interpolated medium parameters used for SAR evaluation.](#)

Maximum value of SAR (measured) = 0.082 mW/g

Face up, W/holster - M-ch/Zoom Scan (7x7x9)/Cube 0: Measurement grid: dx=5mm, dy=5mm, dz=3mm

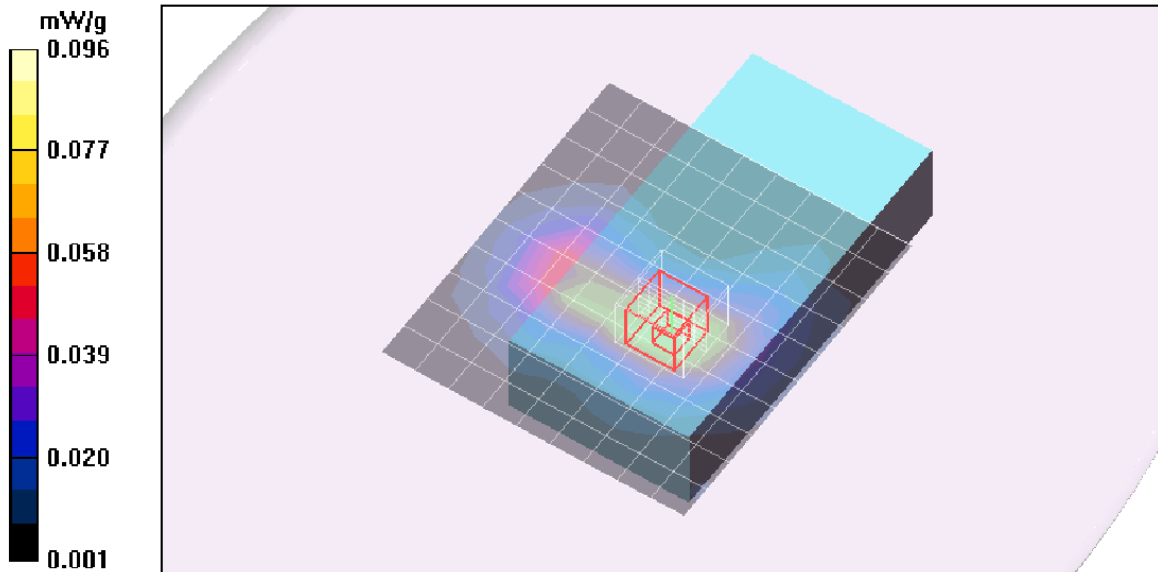
Reference Value = 4.19 V/m; Power Drift = 0.598 dB

Peak SAR (extrapolated) = 0.137 W/kg

SAR(1 g) = 0.078 mW/g; SAR(10 g) = 0.044 mW/g

[Info: Interpolated medium parameters used for SAR evaluation.](#)

Maximum value of SAR (measured) = 0.096 mW/g



14. ATTACHMENTS

No.	Contents	No. of page (s)
1	System Performance Check Plots	16
2-1	SAR Test Plots for UMTS 1900	14
2-2	SAR Test Plots for GSM 1900	6
2-3	SAR Test Plots for UMTS 850	7
2-4	SAR Test Plots for GSM 850	9
2-5	SAR Test Plots for WiFi	10
2-6	SAR Test Plots for Multi Band Results	4
3	Certificate of E-Field Probe – EX3DV4 SN3686	10
4	Certificate of System Validation Dipole - D835V2 SN:4d002	9
5	Certificate of System Validation Dipole - D1900V2 SN:5d043	9
6	Certificate of System Validation Dipole - D2450V2 SN:748	6