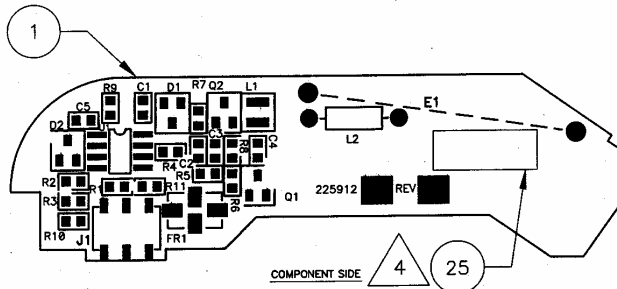
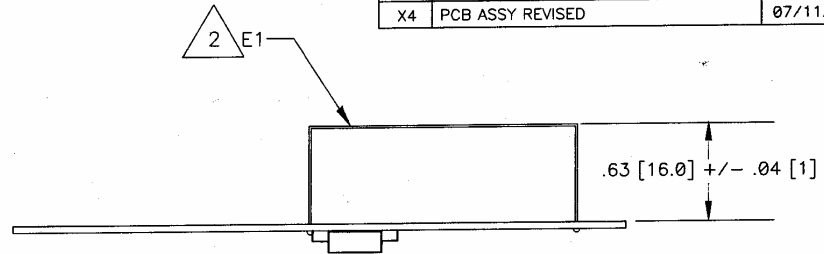


SECTION 5

NOTES: (UNLESS OTHERWISE SPECIFIED)

- 1 MARK ASSEMBLY DASH NUMBER AND REVISION LETTER USING .12 [3.0] HIGH CHARACTERS, PERMANENT INK, CONTRASTING COLOR, APPROXIMATELY WHERE SHOWN.
- 2 BEND ANTENNA WIRE, E1 AND SOLDER TO PCB AS SHOWN.
- 3 COAT ENTIRE ASSEMBLY EXCEPT CONNECTOR (J1) WITH CONFORMAL COATING (ITEM 24).
- 4 PLACE DATE CODE LABEL (ITEM 25) APPROXIMATELY WHERE SHOWN.

REVISIONS			
REV	DESCRIPTION	DATE	APPROVED
X1	ENGINEERING RELEASE		
X2	PCB REVISED	06/20/06	
X3	PCB REVISED	07/09/06	
X4	PCB ASSY REVISED	07/11/06	



SEE SEPARATE PARTS LIST

UNLESS OTHERWISE NOTED ALL DIMENSIONS ARE INCHES [MM]: TOLERANCES: DECIMALS ANGLES: +/- .5 DEG .XX +/- .02 [.5] ROUNDNESS: +/- .005 [.13] .XXX +/- .005 [.13] FLATNESS: +/- .005 [.13] CONCENTRICITY: +/- .005 [.13]	PROJECT:		Linear 2855 CORTE DEL NOGAL • CARLSBAD, CA 92009	
	CAD OPERATOR:	DATE	TITLE:	
	KMC	04/27/06	DXS/DXT-73	
	CHECKED:	DATE	SIZE:	DRAWING NO.:
APPROVED:	DATE	B	225912	REV.: X4
FINISH:	APPROVED:	DATE	SCALE: NONE	DO NOT SCALE DRAWING
				SHEET: 1 OF 1