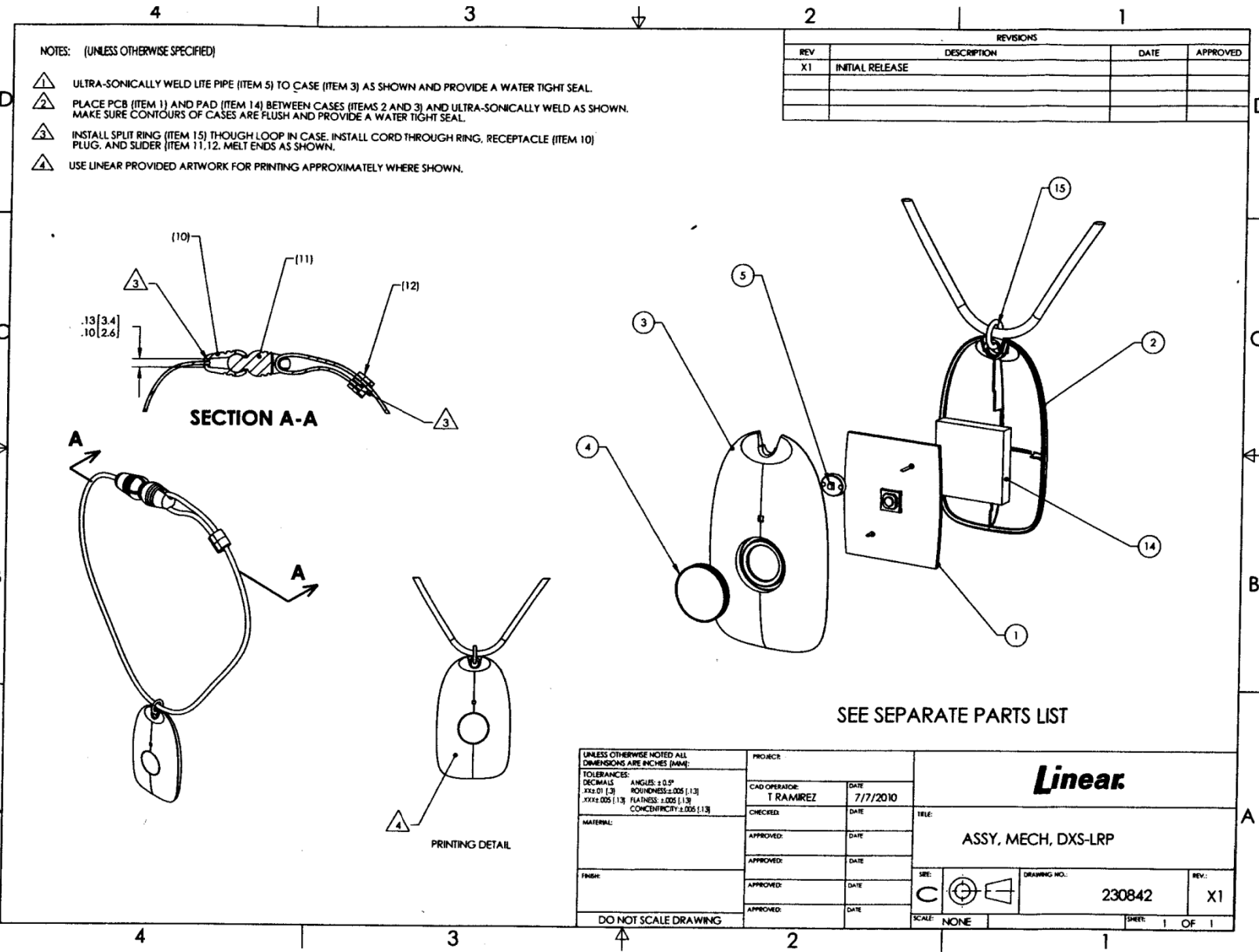


LINEAR LLC  
FCC ID:EF4LRP



NOTES: (UNLESS OTHERWISE SPECIFIED)

- 1 ULTRA-SONICALLY WELD LITE PIPE (ITEM 5) TO CASE (ITEM 3) AS SHOWN AND PROVIDE A WATER TIGHT SEAL.
- 2 PLACE PCB (ITEM 1) AND PAD (ITEM 14) BETWEEN CASES (ITEMS 2 AND 3) AND ULTRA-SONICALLY WELD AS SHOWN. MAKE SURE CONTOURS OF CASES ARE FLUSH AND PROVIDE A WATER TIGHT SEAL.
- 3 INSTALL SPLIT RING (ITEM 15) THROUGH LOOP IN CASE, INSTALL CORD THROUGH RING, RECEPTACLE (ITEM 10) PLUG, AND SLIDER (ITEM 11,12. MELT ENDS AS SHOWN.
- 4 USE LINEAR PROVIDED ARTWORK FOR PRINTING APPROXIMATELY WHERE SHOWN.

REVISIONS			
REV	DESCRIPTION	DATE	APPROVED
X1	INITIAL RELEASE		

SEE SEPARATE PARTS LIST

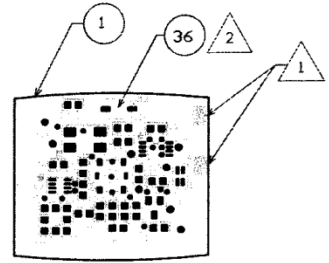
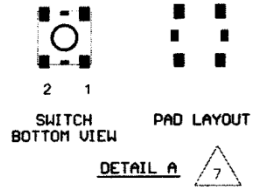
UNLESS OTHERWISE NOTED ALL DIMENSIONS ARE INCHES (MM):		PROJECT:		<b>Linear</b>	
TOLERANCES: DECIMALS: ANGLES: ± 0.5° .005 [0.125] ROUNDNESS: ± .005 [0.125] .002 [0.051] FLATNESS: ± .005 [0.125] CONCENTRICITY: ± .005 [0.125]		CAD OPERATOR: T RAMIREZ DATE: 7/7/2010			
MATERIAL:		CHECKED:	DATE:	TITLE: ASSY, MECH, DXS-LRP	
FINISH:		APPROVED:	DATE:	SRE:  DRAWING NO.: 230842 REV: X1	
DO NOT SCALE DRAWING		APPROVED:	DATE:	SCALE: NONE SHEET: 1 OF 1	

LINEAR LLC  
 FCC ID: EF4LRP

**NOTES: (UNLESS OTHERWISE SPECIFIED)**

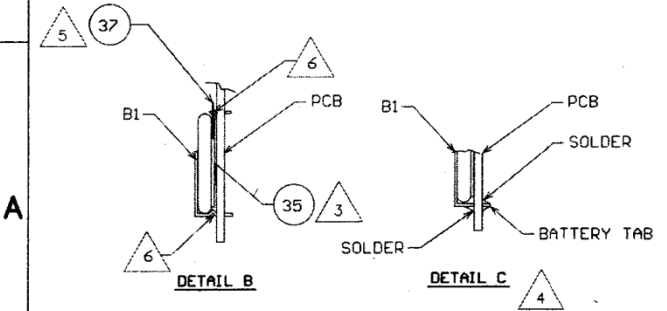
- 1 MARK ASSEMBLY DASH NUMBER AND REVISION LETTER USING .12 (3.0) HIGH CHARACTERS, PERMANENT INK, CONTRASTING COLOR, APPROXIMATELY WHERE SHOWN.
- 2 APPLY GLYPH (ITEM 36) TO TUNING SCREW AFTER TUNING.
- 3 APPLY RTV (ITEM 35) ON PCB BELOW BATTERY (B1) THEN PRESS BATTERY FLUSH TO PCB. SMALL AMOUNT OF RTV SHALL BE SEEN ON SIDE OF BATTERY FOR INSPECTION.
- 4 SOLDER BATTERY TABS AS SHOWN IN DETAIL C AND TRM TABS TO .05 - .07 LONG.
- 5 PLACE .50 X .25 PIECE OF TAPE (ITEM 37), BETWEEN BATTERY AND BATTERY TAB AS SHOWN IN DETAIL B.
- 6 BATTERY TABS MUST NOT BE BENT AS SHOWN IN DETAIL B.
- 7 BOTTOM VIEW OF SWITCH IS SHOWN IN DETAL A. NOTE ORIENTATION OF THE PINS (1 - 2) ALONG WITH SMALL TABS TO INSTALL SWITCHES CORRECTLY.


REVISIONS			
REV	DESCRIPTION	DATE	APPROVED
X1	ENGINEERING RELEASE		



BOARD OUTLINE

SEE SEPARATE PARTS LIST



UNLESS OTHERWISE NOTED ALL DIMENSIONS ARE IN INCHES (MM) TOLERANCES: DECIMALS: .02 (L5) XX+/- .02 (L5) XXX+/- .005 (L30) MATERIAL: FINISH:	CONCENTRICITY+/- .005 (L31) ANGLES+/- 5 DEG FLATNESS+/- .005 (L31)	CAD OPERATOR: A.FROST DATE: 12/9/09	 CARLSBAD, CA	
	CHECKED: _____ DATE: _____	TITLE: ASSY, PCB, DXS-LRX		
	APPROVED: _____ DATE: _____	SIZE: C FSCM NO.: _____ DRAWING NO.: 230839	REV: X1	
	APPROVED: _____ DATE: _____	SCALE: 2/1	SHEET: 1 OF 1	
	APPROVED: _____ DATE: _____	DO NOT SCALE DRAWING		