

DA.00207.LM.2AS

Antenna Specification

1. Application:

This application shall apply for antenna unit which shall be used such as automotive, conventional communications, smart home, etc..

1. Electrical Specification:

Those specifications were specially defined for customer's model, and all characteristics were measured under the model's handset testing jig .

2-1. Frequency Band:

Frequency Band	MHz
915MHZ	915


2-2. Impedance

50 ohm nominal

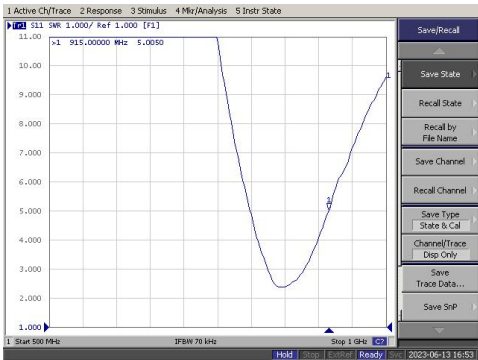

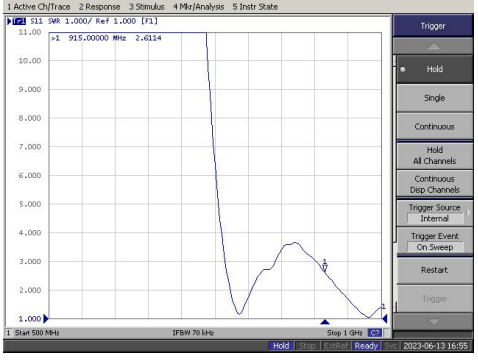

2-3. VSWR

2-3-1.Measurement frequency points and VSWR value

Frequency Band(MHz)	915	915	915
2-3-2. Typical Value:	5.00	2.61	2.25
VSWR Maximum value	≤7	≤3.3	≤3.0
Used in conjunction with Cable	NO Cable	60mm Cable	120mm Cable

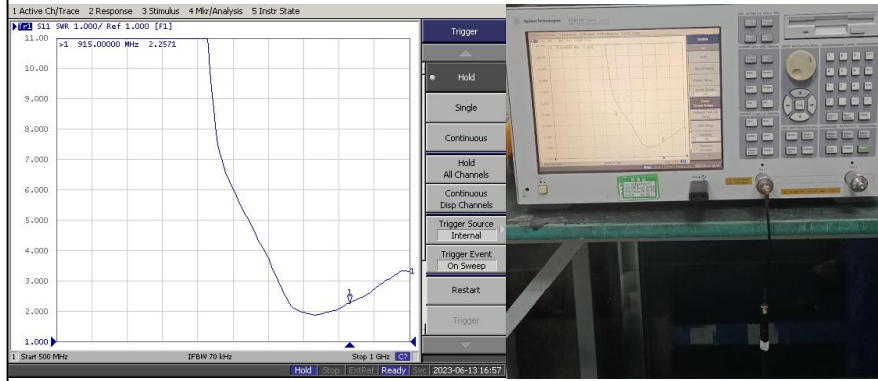
UNLESS OTHER SPECIFIED TOLERANCES ON: X=± X.X=± X.XX=± ANGLES=± HOLEDIA=±		 KINGRF TECHNOLOGY CO., LTD.
SCALE:	UNIT: mm	
DRAWN BY: Lu	CHECKED BY: YS	THIS DRAWINGS AND SPECIFICATIONS ARE THE PROPERTY OF KINGRF TECHNOLOGY CO.,LTD.AND SHALL NOT BE REPRODUCED OR USED AS THE BASIS FOR THE MANUFACTURE OR SALE OF APPARATUS OR DEVICES WITHOUT PERMISSION
DESIGNED BY: JIN TIAN	APPROVED BY: YS	
TITLE: DA.0207.LM.2AS Antenna Specification		SPEC REV. P0

2-3-3.ANTENNA CONNECTOR RP - SMA -Male(witch on pin)

2-3-4 Picture	<div style="text-align: center;"> <h3>NO Cable</h3>   </div> <div style="text-align: center; margin-top: 20px;"> <h3>60mm Cable</h3>   </div>

UNLESS OTHER SPECIFIED TOLERANCES ON: X=± X.X=± X.XX=± ANGLES=± HOLEDIA=±		KINGRF TECHNOLOGY CO., LTD.
SCALE:	UNIT: mm	THIS DRAWINGS AND SPECIFICATIONS ARE THE PROPERTY OF KINGRF TECHNOLOGY CO.,LTD.AND SHALL NOT BE REPRODUCED OR USED AS THE BASIS FOR THE MANUFACTURE OR SALE OF APPARATUS OR DEVICES WITHOUT PERMISSION
DRAWN BY: Lu	CHECKED BY: YS	
DESIGNED BY: JIN TIAN	APPROVED BY: YS	
TITLE: DA.0207.LM.2AS Antenna Specification		SPEC REV. P0

120mm Cable



UNLESS OTHER SPECIFIED TOLERANCES ON: X=± X.X=± X.XX=± ANGLES=± HOLEDIA=±			KINGRF TECHNOLOGY CO., LTD.
SCALE:	UNIT: mm		
DRAWN BY: Lu	CHECKED BY: YS		
DESIGNED BY: JIN TIAN	APPROVED BY: YS		
TITLE: DA.0207.LM.2AS Antenna Specification			SPEC REV. P0

2-4-1 Efficiency and Gain

NO Cable

Freq	Effi	Gain
(MHz)	(%)	(dBi)
910	49.56	-0.24
911	51.15	0.03
912	52.29	0.31
913	53.11	0.53
914	53.69	0.72
915	54	0.86
916	54.18	0.99
917	54.84	1.11
918	54.6	1.25
919	54.84	1.4
920	55.26	1.57

60mm Cable

Freq	Effi	Gain
(MHz)	(%)	(dBi)
910	38.54	0.76
911	40.41	0.94
912	41.71	1.07
913	42.32	1.13
914	42.22	1.14
915	41.63	1.1
916	40.73	1.04
917	39.68	0.96
918	38.6	0.88
919	37.62	0.81
920	36.73	0.73

Freq	Effi	Gain
(MHz)	(%)	(dBi)
910	64.07	1.74
911	65.46	1.79
912	66.06	1.82
913	65.78	1.82
914	64.77	1.79
915	63.31	1.73
916	61.56	1.65
917	59.66	1.57
918	57.91	1.5
919	56.36	1.44
920	54.99	1.39

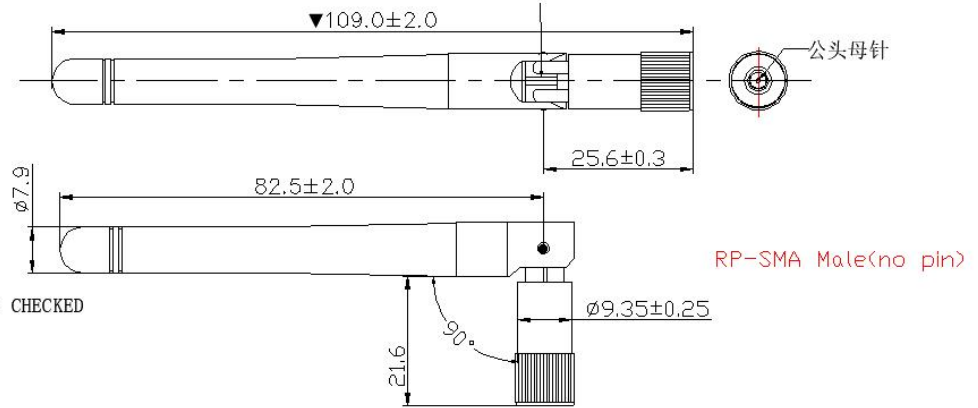
120mm Cable

UNLESS OTHER SPECIFIED TOLERANCES ON: X=± X.X=± X.XX=± ANGLES=± HOLEDIA=±			KINGRF TECHNOLOGY CO., LTD.
SCALE:	UNIT: mm		
DRAWN BY: Lu	CHECKED BY: YS	THIS DRAWINGS AND SPECIFICATIONS ARE THE PROPERTY OF KINGRF TECHNOLOGY CO.,LTD.AND SHALL NOT BE REPRODUCED OR USED AS THE BASIS FOR THE MANUFACTURE OR SALE OF APPARATUS OR DEVICES WITHOUT PERMISSION	
DESIGNED BY: JIN TIAN	APPROVED BY: YS		
TITLE: DA.0207.LM.2AS Antenna Specification			SPEC REV. P0

3. Mechanical Specification:

3-1. Mechanical Configuration (Unit: mm)

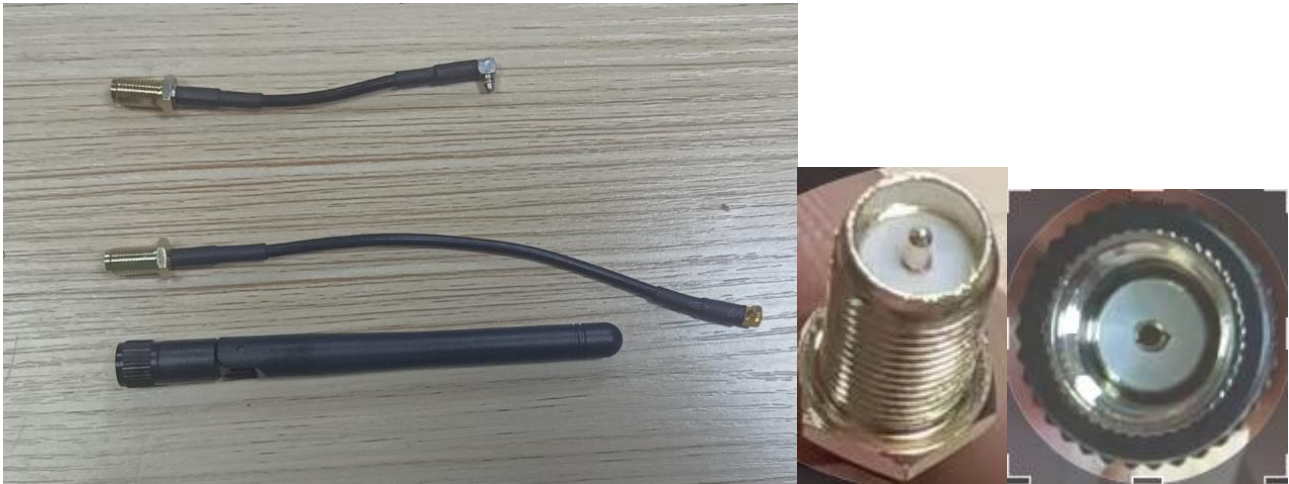
The appearance of the antenna is according to drawing



NOTES:

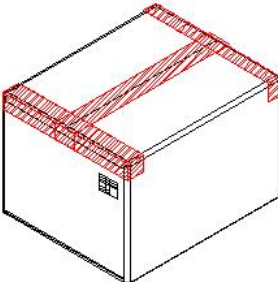
1. DIMENSIONS MARKED ▼ SHALL BE CHECKED
2. Electrical:
 - 2.1 Impedance: 50 OHMs.
 - 2.2 Frequency: 915MHZ
 - 2.3 Peak Gain: 1.5dBi
 - 2.4 Polarization: Linear
 - 2.5 Radiation Patten:Omni-directional
3. Enviromental:
 - 3.1 Storage Temperature Range: -20 TO +65℃
 - 3.2 Operating Temperature Range: -20 TO +60℃
4. HARMFUL MATERIAL AND PROCESS CONTROL , PLEASE FOLLOW ROHS


UNLESS OTHER SPECIFIED TOLERANCES ON: X=± X.X=± X.XX=± ANGLES=± HOLEDIA=±			KINGRF TECHNOLOGY CO., LTD.
SCALE:	UNIT: mm		
DRAWN BY: Lu	CHECKED BY: YS		
DESIGNED BY: JIN TIAN	APPROVED BY: YS		
TITLE: DA.0207.LM.2AS Antenna Specification			SPEC REV. P0

3-2.Product Image:


UNLESS OTHER SPECIFIED TOLERANCES ON: $X = \pm$ $X.X = \pm$ $X.XX = \pm$ ANGLES = \pm HOLEDIA = \pm			KINGRF TECHNOLOGY CO., LTD.
SCALE:	UNIT: mm		
DRAWN BY: Lu	CHECKED BY: YS		
DESIGNED BY: JIN TIAN	APPROVED BY: YS		
TITLE: DA.0207.LM.2AS Antenna Specification			SPEC REV. P0

4.包装规格:

产品料号: xxx			
产品型号: xxx			
一、标签要求:			
需方	xxx		
供方	XXXXX		
物料编码	xx		
产品型号	xx		
数量/单	xxx PCS	出厂日期	X 年 X 月 X 日
备注/其他			
二、装箱要求:			
作业说明:			
1. 内包装: RP - SMA MALECONNCTOR			
产品 XX PCS 一袋, 放入小 PE 袋;			
2. 外包装: Xx PCS 一箱;			
3. 注意事项: a. 是否要增设隔板、珍珠棉; b. 标签的帖附, 如 ROHS 等;			
<div style="display: flex; justify-content: space-around; align-items: center;"> <div style="border: 1px solid black; padding: 10px; text-align: center;"> PE 袋 </div> <div style="text-align: center;">  </div> </div>			

UNLESS OTHER SPECIFIED TOLERANCES ON: X=± X.X=± X.XX=± ANGLES=± HOLEDIA=±			KINGRF TECHNOLOGY CO., LTD.
SCALE:	UNIT: mm	THIS DRAWINGS AND SPECIFICATIONS ARE THE PROPERTY OF KINGRF TECHNOLOGY CO.,LTD.AND SHALL NOT BE REPRODUCED OR USED AS THE BASIS FOR THE MANUFACTURE OR SALE OF APPARATUS OR DEVICES WITHOUT PERMISSION	
DRAWN BY: Lu	CHECKED BY: YS		
DESIGNED BY: JIN TIAN	APPROVED BY: YS		
TITLE: DA.0207.LM.2AS Antenna Specification		SPEC REV. P0	