

NOTES: (UNLESS OTHERWISE SPECIFIED)

- MATERIAL: 2 PART, FASSON 2MIL HIGH GLOSS WHITE POLYESTER NTC/S33/BG50#WHT OR EQUIVALENT, ADHESIVE BACKED. MATERIAL AND PRINTER SHALL BE UL APPROVED OR RECOGNIZED.
- RIBBON INK: BLACK, RICOH B110A-W3 OR EQUIVALENT.

3 PART A TO BE APPLIED AT MECHANICAL ASSEMBLY LEVEL.

4 DATA CONTAINED IN QR CODE TO BE LOGGED AND EMAILED AS FOLLOWS:

- FILE FORMAT: TXT FILE
- FILE NAMING: FG NUMBER (NO DASHES)\_DATE AND TIME (YYYYMMDDHHMMSS).TXT I.E. 2GIGGB1E900\_20170328074559
- FILE NAME TO BE UNIQUE.
- FILE HEADER: FG NUMBER\*SHIP DATE (MMDDYYYY)\*PO NUMBER\*LOT SIZE I.E. H: 2GIG-GB1E-900\*03282017-123456-1000
- ONLY ONE DATA ENTRY PER TEXT LINE.
- EMAIL DATA FILE TO \*\*\*\*\*TBD\*\*\*\*\*.

5 QR CODE SHALL BE ENCODED AS FOLLOWS:

- O: 612E-7C1A-0F7D-49D8-C002-1982-51B7-FDA3\*D: 1726212345678912\*F: 2GIG-GB1E-900\*A: 93AD
- O: A UNIQUE 32 CHARACTERS (16 HEX BYTES GUID CODE) RANDOMLY GENERATED NUMBER. FIELDS ARE SEPARATED BY "\*" AND VALUES OF FIELDS ARE SEPARATED USING ":" (SEE PROCEDURE 10032797).
- D: DATE CODED SERIAL NUMBER IN FORMAT OF YYWWFFXXXXXXXXXX (SEE FORMAT 10004614).  
NOTE: THIS SERIAL NUMBER MUST MATCH SERIAL NUMBER ON LABEL INSTALLED AT PCB ASSEMBLY LEVEL.
- F: MODEL NUMBER. (E.G. 2GIG-GB1E-900, 2GIG-PIR1E-900 ETC).
- A: CALCULATED CRC16 FIELD (SEE PROCEDURE 10032797).

6 QR CODE FORMAT: MODEL 2, VERSION 4 (33 MODULES X 33 MODULES) WITH LEVEL L CORRECTION. REFERENCE STANDARD ISO/IEC 18004:2015. QR CODE TO BE PRINTED WITH MINIMUM 600 DPI.

7 PART B TO BE APPLIED ON UNIT BOX AT FINISHED GOOD LEVEL.

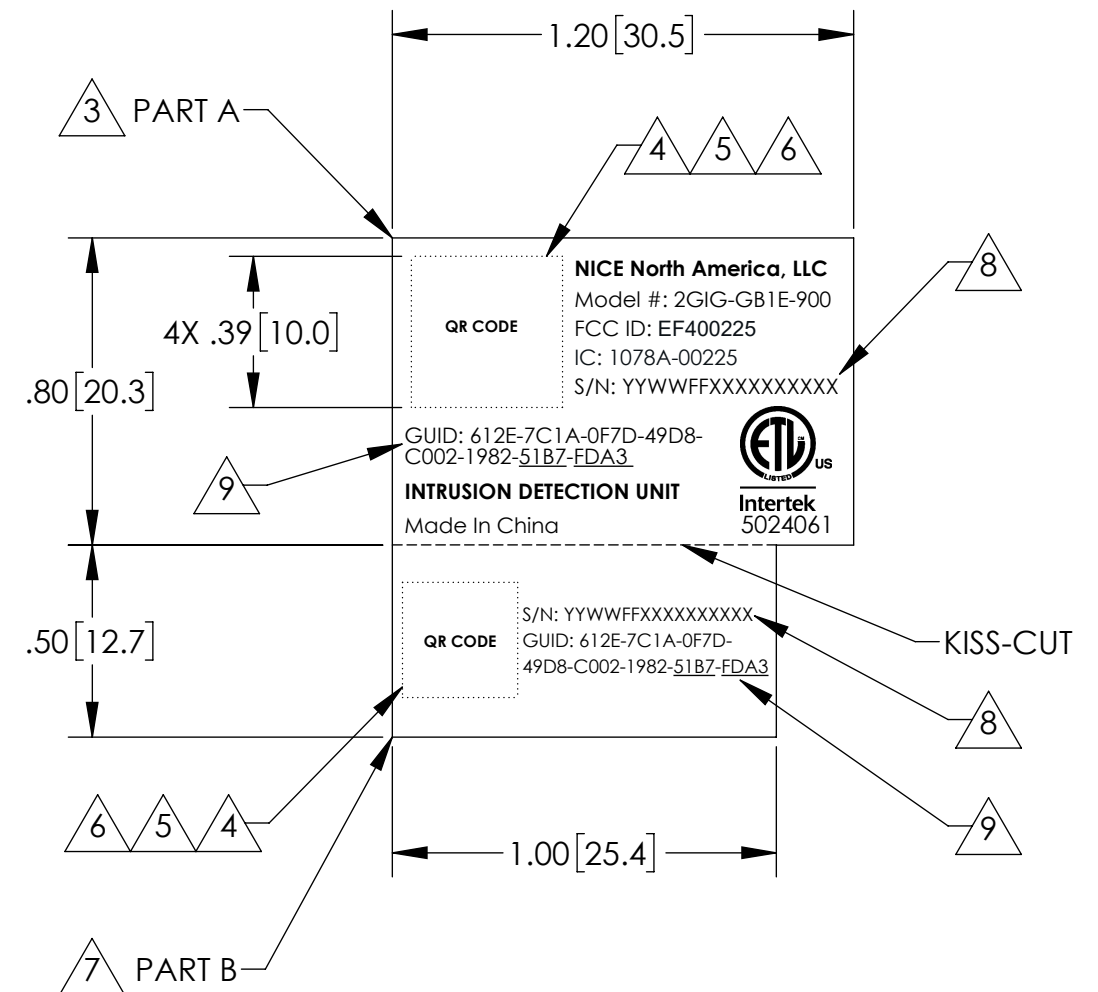
8 SERIAL NUMBER IS HUMAN READABLE (SEE FORMAT 10004614). NOTE: THIS SERIAL NUMBER MUST MATCH SERIAL NUMBER ON LABEL INSTALLED AT PCB ASSEMBLY LEVEL.

9 GUID CODE IS HUMAN READABLE AND MUST MATCH ON TWO PARTS. LAST EIGHT DIGITS TO BE UNDERLINED. SEE NOTE 5 FOR ADDITIONAL INFORMATION.

10. PRINTING TOLERANCE: ± .020 [0.51].

11. PART SHALL BE RoHS COMPLIANT.

REVISIONS			
REV	DESCRIPTION	DATE	APPROVED
X1	INC ECO-030195 - LL	09/12/2023	



**LABEL DETAIL**

UNLESS OTHERWISE NOTED ALL DIMENSIONS ARE INCHES [MM]:		PROJECT:			
TOLERANCES:		CAD OPERATOR: P. BRKIC			
DECIMALS .XX±01 [.3]	ANGLES: ±0.5°	DATE 10/20/2021	DATE	SIZE: B	
.XXX±020 [.51]	ROUNDNESS: ±.005 [.13]	CHECKED:	DATE	SCALE: 2:1	
MATERIAL: NOTED	FLATNESS: ±.005 [.13]	APPROVED:	DATE	DRAWING NO.: 10032637	REV.: X1
FINISH:	CONCENTRICITY: ±.005 [.13]	APPROVED:	DATE	DO NOT SCALE DRAWING	SHEET: 1 OF 1

THE INFORMATION CONTAINED IN THIS DRAWING IS THE SOLE PROPERTY OF Nice. ANY REPRODUCTION IN PART OR AS A WHOLE WITHOUT WRITTEN PERMISSION OF Nice IS PROHIBITED.  
© 2022 Nice.

Location: Underneath the bottom battery slot

