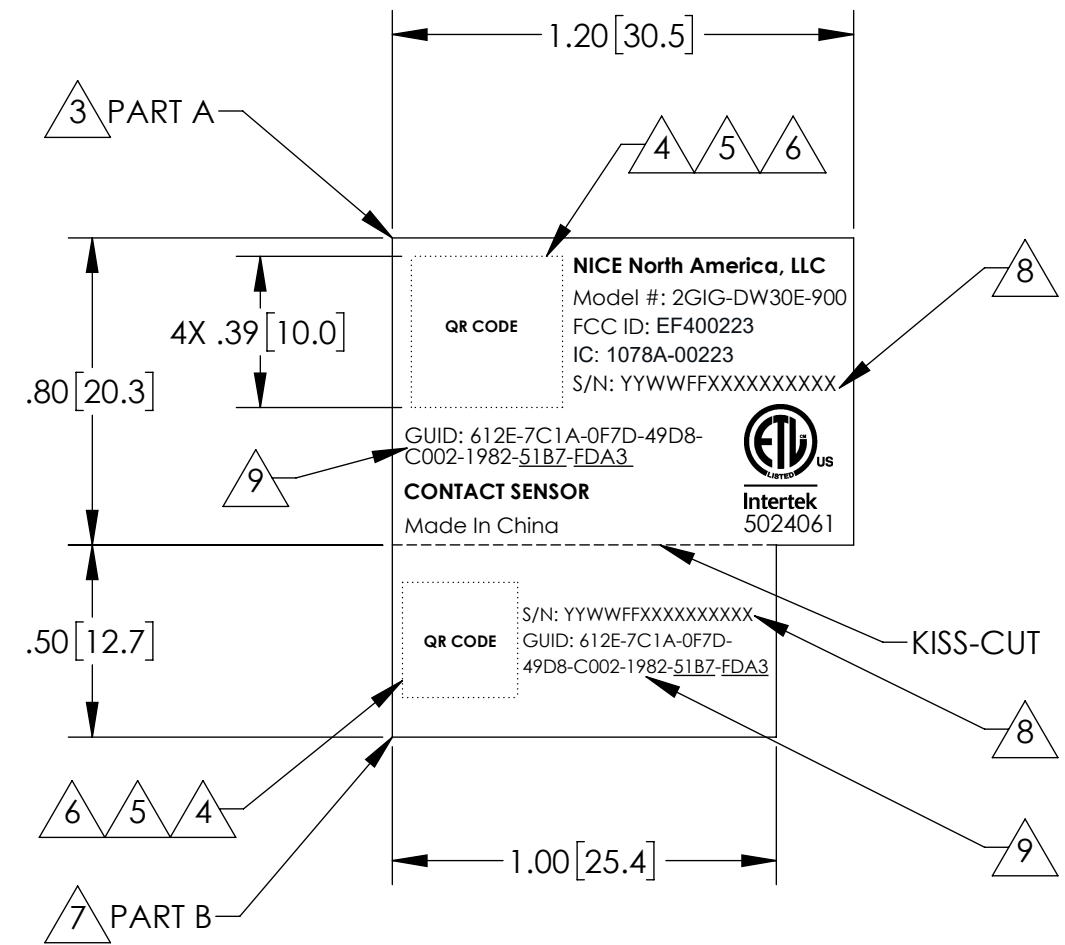


NOTES: (UNLESS OTHERWISE SPECIFIED)

1. MATERIAL: 2 PART, FASSON 2MIL HIGH GLOSS WHITE POLYESTER NTC/S33/BG50#WHT OR EQUIVALENT, ADHESIVE BACKED.
MATERIAL AND PRINTER SHALL BE UL APPROVED OR RECOGNIZED.
2. RIBBON INK: BLACK, RICOH B110A-W3 OR EQUIVALENT.
3. PART A TO BE APPLIED AT MECHANICAL ASSEMBLY LEVEL.
4. DATA CONTAINED IN QR CODE TO BE LOGGED AND EMAILED AS FOLLOWS:
 - FILE FORMAT: TXT FILE
 - FILE NAMING: FG NUMBER (NO DASHES)_DATE AND TIME (YYYYMMDDHHMMSS).TXT
I.E. 2GIGDW30E900_20170328074559
 - FILE NAME TO BE UNIQUE.
 - FILE HEADER: FG NUMBER*SHIP DATE (MMDDYYY)*PO NUMBER*LOT SIZE
I.E. H: 2GIG-DW30E-900*03282017-123456-1000
 - ONLY ONE DATA ENTRY PER TEXT LINE.
 - EMAIL DATA FILE TO *****TBD*****.
5. QR CODE SHALL BE ENCODED AS FOLLOWS:
 - O:612E-7C1A-0F7D-49D8-C002-1982-51B7-FDA3*D:1726212345678912*F:2GIG-DW30E-900*A:93AD
 - O: A UNIQUE 32 CHARACTERS (16 HEX BYTES GUID CODE) RANDOMLY GENERATED NUMBER. FIELDS ARE SEPARATED BY "*" AND VALUES OF FIELDS ARE SEPARATED USING ":" (SEE PROCEDURE 10032797).
 - D: DATE CODED SERIAL NUMBER IN FORMAT OF YYWWFFXXXXXXXXXX (SEE FORMAT 10004614).
NOTE: THIS SERIAL NUMBER MUST MATCH SERIAL NUMBER ON LABEL INSTALLED AT PCB ASSEMBLY LEVEL.
 - F: MODEL NUMBER. (E.G. 2GIG-DW30E-900, 2GIG-PIR1E-900 ETC).
 - A: CALCULATED CRC16 FIELD (SEE PROCEDURE 10032797).
6. QR CODE FORMAT: MODEL 2, VERSION 4 (33 MODULES X 33 MODULES) WITH LEVEL L CORRECTION. REFERENCE STANDARD ISO/IEC 18004:2015. QR CODE TO BE PRINTED WITH MINIMUM 600 DPI.
7. PART B TO BE APPLIED ON UNIT BOX AT FINISHED GOOD LEVEL.
8. SERIAL NUMBER IS HUMAN READABLE (SEE FORMAT 10004614).
NOTE: THIS SERIAL NUMBER MUST MATCH SERIAL NUMBER ON LABEL INSTALLED AT PCB ASSEMBLY LEVEL.
9. GUID CODE IS HUMAN READABLE AND MUST MATCH ON TWO PARTS. LAST EIGHT DIGITS TO BE UNDERLINED. SEE NOTE 5 FOR ADDITIONAL INFORMATION.
10. PRINTING TOLERANCE: $\pm .020$ [0.51].
11. PART SHALL BE RoHS COMPLIANT.

REVISIONS			
REV	DESCRIPTION	DATE	APPROVED
X1	INC ECO-030195 - LL	09/08/2023	



LABEL DETAIL

THE INFORMATION CONTAINED IN THIS DRAWING IS THE SOLE PROPERTY OF Nice. ANY REPRODUCTION IN PART OR AS A WHOLE WITHOUT WRITTEN PERMISSION OF Nice IS PROHIBITED.
© 2022 Nice.

UNLESS OTHERWISE NOTED ALL DIMENSIONS ARE INCHES [MM]:		PROJECT:			
TOLERANCES:		CAD OPERATOR:			
DECIMALS	ANGLES: $\pm 0.5^\circ$	P. BRKIC	DATE	TITLE: LABEL, FCC, S/N, QR, TRACKING, 2GIG-DW30E-900	
.XX \pm 01 [.3]	ROUNDNESS: $\pm .005$ [.13]	CHECKED:	DATE	SIZE: B	
.XXX \pm 020 [.51]	FLATNESS: $\pm .005$ [.13]	APPROVED:	DATE	DRAWING NO.: 10032800	
MATERIAL:	CONCENTRICITY: $\pm .005$ [.13]	APPROVED:	DATE	REV.: X1	
FINISH:		APPROVED:	DATE	SHEET: 1 OF 1	
				SCALE: 2:1	DO NOT SCALE DRAWING

Location:

