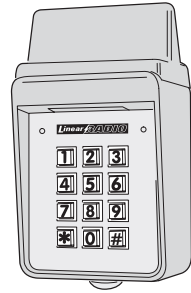


MDKP



WIRELESS KEYPAD TRANSMITTER



Installation Instructions



USA & Canada Toll Free (800) 421-1587
or dial (760) 438-7000
www.nortekcontrol.com

Copyright © 2020 Nortek Security & Control LLC

217539 Rev-AX2

DESCRIPTION

The MDKP Wireless Keypad is one of Nortek's MegaCode® series of wireless radio controls designed for use with automatic garage door and gate operators. The MegaCode radio format provides unparalleled security with more than a million different codes. In operation, the user enters their unique code (1 to 6 digits long) on the unit's keypad then presses the "#" key to send a signal to the door or gate operator receiver.

The MDKP can be illuminated for use at night or in dark areas. Pressing the "#" key before entering a code turns on two yellow lights that shine down on the keypad's keys. To illuminate the keypad after beginning to enter a code, press the "#" key twice, then re-enter the entire code. The keypad lights remain on for 30-seconds, or until a code is sent.

The option jumper controls two features, the keypad lockout timer and the 30-second repeat feature. The keypad lockout timer will disable the keypad after 10 repeated activations. The keypad must remain idle for 30 seconds before any new code attempts are accepted. The 30-second repeat feature allows the user to press the "#" key again within 30 seconds to send another signal without having to re-enter their code. These features are available only when option jumper is installed. **NOTE:** Having the option jumper installed will reduce the unit's battery life. The MDKP is powered by a 9-volt lithium battery. Without the option jumper installed the battery life is expected to be 5 years with 25 activations-a-day.

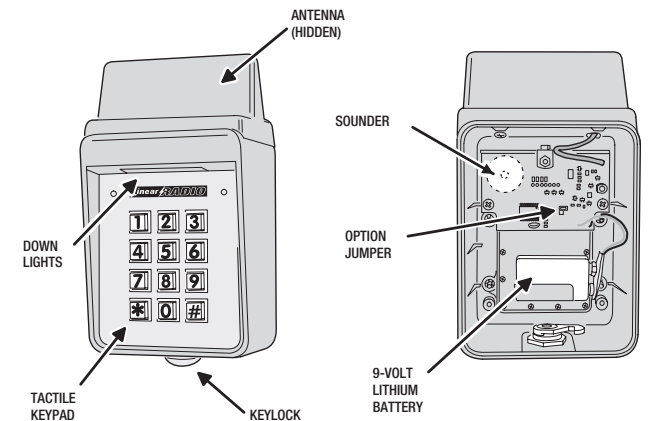
MegaCode receivers are programmed by sending a signal from the user's transmitters. This stores the transmitter's code into the receiver's memory. The receiver will only activate from these "memorized" transmitters. Each code entered on the MDKP keypad will appear to the receiver as a unique MegaCode transmitter. MegaCode receivers have limits on the number of transmitters that can be programmed into them. Any combination of portable transmitters and keypad codes up to the maximum number of transmitters allowed can be programmed into a receiver.

WARNING: Change or modifications not expressly approved by the manufacturer could void the user's authority to operate the equipment.

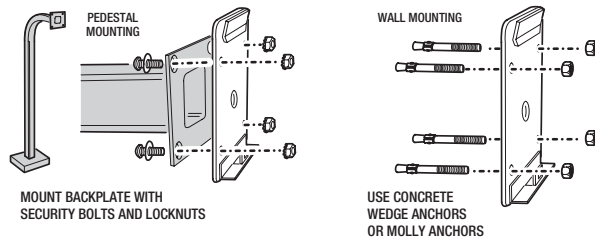
NOTE: This equipment has been tested and found to comply with the limits for a Class B digital device, pursuant to Part 15 of the Federal Communications Commission (FCC) rules. These limits are designed to provide reasonable protection against harmful interference in a residential installation. This equipment generates, uses and can radiate radio frequency energy and, if not installed and used in accordance with the instructions, may cause harmful interference to radio communications. However, there is no guarantee that interference will not occur in a particular installation. If this equipment does cause harmful interference to radio or television reception, which can be determined by turning the equipment off and on, the user is encouraged to try to correct the interference by one or more of the following measures:

- Reorient or relocate the receiving antenna.
- Increase the separation between the equipment and receiver.
- Connect the equipment into an outlet on a circuit different from that to which the receiver is connected.
- Consult the dealer or an experienced radio/TV technician for help.

1. COMPONENT LOCATIONS



2. KEYPAD MOUNTING



MOUNT BACKPLATE WITH SECURITY BOLTS AND LOCKNUTS

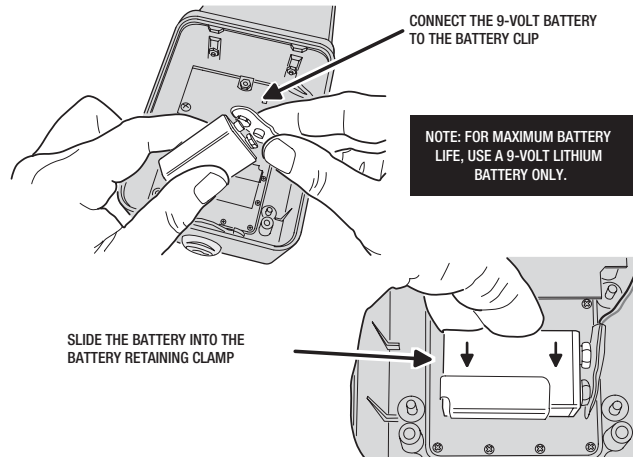
USE CONCRETE WEDGE ANCHORS OR MOLLY ANCHORS

WARNING!



TO AVOID SERIOUS INJURY OR DEATH, MAKE SURE THAT THE UNIT IS FAR ENOUGH FROM THE DOOR OR GATE SO THAT THE USER CANNOT TOUCH THE DOOR OR GATE WHILE OPERATING THE KEYPAD. HOWEVER, THE DOOR OR GATE MUST BE FULLY VISIBLE FROM THE KEYPAD.

3. CONNECT BATTERY

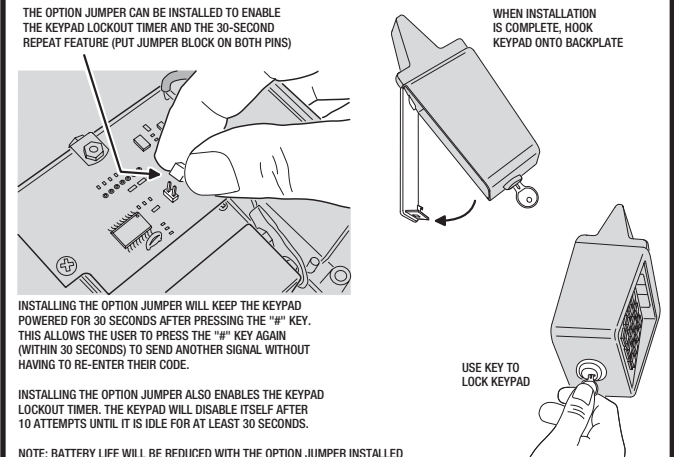


CONNECT THE 9-VOLT BATTERY TO THE BATTERY CLIP

NOTE: FOR MAXIMUM BATTERY LIFE, USE A 9-VOLT LITHIUM BATTERY ONLY.

SLIDE THE BATTERY INTO THE BATTERY RETAINING CLAMP

4. SET JUMPER & LOCK KEYPAD



THE OPTION JUMPER CAN BE INSTALLED TO ENABLE THE KEYPAD LOCKOUT TIMER AND THE 30-SECOND REPEAT FEATURE (PUT JUMPER BLOCK ON BOTH PINS)

WHEN INSTALLATION IS COMPLETE, HOOK KEYPAD ONTO BACKPLATE

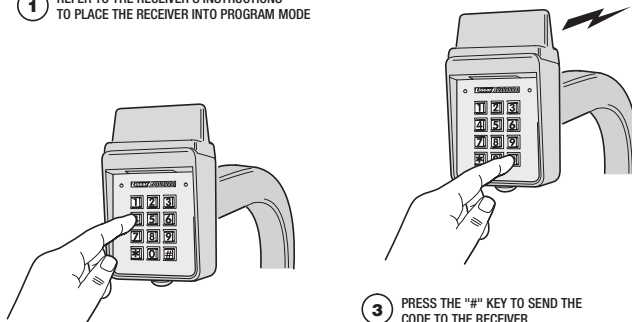
INSTALLING THE OPTION JUMPER WILL KEEP THE KEYPAD POWERED FOR 30 SECONDS AFTER PRESSING THE "#" KEY. THIS ALLOWS THE USER TO PRESS THE "#" KEY AGAIN (WITHIN 30 SECONDS) TO SEND ANOTHER SIGNAL WITHOUT HAVING TO RE-ENTER THEIR CODE.

INSTALLING THE OPTION JUMPER ALSO ENABLES THE KEYPAD LOCKOUT TIMER. THE KEYPAD WILL DISABLE ITSELF AFTER 10 ATTEMPTS UNTIL IT IS IDLE FOR AT LEAST 30 SECONDS.

NOTE: BATTERY LIFE WILL BE REDUCED WITH THE OPTION JUMPER INSTALLED

5. PROGRAM RECEIVER

1 REFER TO THE RECEIVER'S INSTRUCTIONS TO PLACE THE RECEIVER INTO PROGRAM MODE



3 PRESS THE "#" KEY TO SEND THE CODE TO THE RECEIVER

2 ENTER A ONE TO SIX DIGIT CODE

4 REPEAT STEPS ONE, TWO, AND THREE TO ADD ADDITIONAL CODES INTO THE RECEIVER'S MEMORY

6. TEST OPERATION

WARNING!
BE SURE DOOR OR GATE AREA IS CLEAR OF OBSTRUCTIONS

TRY EACH KEYPAD CODE

THE DOOR OR GATE OPERATOR SHOULD ACTIVATE WHEN THE "#" KEY IS PRESSED AFTER ENTERING A VALID KEYPAD CODE IN THESE EXAMPLES, THE USER'S SECRET CODE IS: 1, 2, 3

DAYTIME OPERATION:
PRESS: 1 → 2 → 3 → #

USER'S SECRET CODE SEND

NIGHTTIME OPERATION:
PRESS: # → 1 → 2 → 3 → #

LIGHTS USER'S SECRET CODE SEND

KEYPAD

IMPORTANT!

- For U.S. installations only: The radios are required to comply with FCC Rules and Regulations as Part 15 devices. As such, they have limited transmitter power and therefore limited range.
- A receiver cannot respond to more than one transmitted signal at a time and may be blocked by radio signals that occur on or near their operating frequencies, regardless of code settings.
- Changes or modifications to the device may void FCC compliance.
- Infrequently used radio links should be tested regularly to protect against undetected interference or fault.
- A general knowledge of radio and its vagaries should be gained prior to acting as a wholesale distributor or dealer, and these facts should be communicated to the ultimate users.

TO CLEAR KEYPAD AT ANY TIME:
PRESS: # → #

LIMITED WARRANTY

This Nortek Security & Control LLC product is warranted against defects in material and workmanship for twelve (12) months. The Warranty Expiration Date is labeled on the product. This warranty extends only to wholesale customers who buy direct from Nortek or through Nortek's normal distribution channels. Nortek does not warrant this product to consumers. Consumers should inquire from their selling dealer as to the nature of the dealers' warranty, if any. There are no obligations or liabilities on the part of Nortek for consequential damages arising out of or in connection with use or performance of this product or other indirect damages with respect to loss of property, revenue, or profit, or cost of removal, installation, or reinstallation. All implied warranties, including implied warranties for merchantability and implied warranties for fitness, are valid only until Warranty Expiration Date as labeled on the product. This Nortek Warranty is in lieu of all other warranties express or implied.

All products returned for warranty service require a Return Product Authorization Number (RPA#). Contact Nortek Technical Services at 1-800-421-1587 for an RPA# and other important details.

FCC & IC NOTICE

This device contains licence-exempt transmitter(s) / receiver(s) that comply with Innovation, Science and Economic Development Canada's licence-exempt RSS(s). Operation is subject to the following two conditions:

1. This device may not cause interference.
 2. This device must accept any interference, including interference that may cause undesired operation of the device.
- L'émetteur/récepteur exempt de licence contenu dans le présent appareil est conforme aux CNR d'Innovation, Sciences et Développement économique Canada applicables aux appareils radio exempts de licence. L'exploitation est autorisée aux deux conditions suivantes:
1. L'appareil ne doit pas produire de brouillage;
 2. L'appareil doit accepter tout brouillage radioélectrique subi, même si le brouillage est susceptible d'en compromettre le fonctionnement.