

MegaCode Series



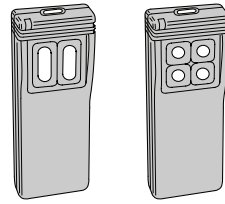
MDT-2, MDT-4

DIGITAL TRANSMITTERS

Installation Instructions



USA & Canada (800) 421-1587 & (800) 392-0123  
 (760) 438-7000 - Toll Free FAX (800) 468-1340  
 www.nortekcontrol.com



MDT-2

MDT-4

DESCRIPTION

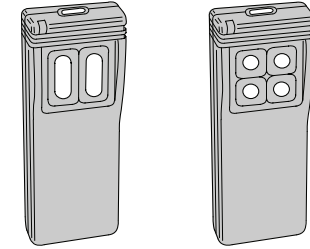
The MegaCode series of digital transmitters are wireless radio controls designed for use with automatic garage door and gate openers. The MegaCode radio format provides unparalleled security. The system can be programmed to more than a million different codes.

MegaCode transmitters and receivers do not contain a typical "coding switch" as in Linear's standard digital receivers. Each transmitter is pre-set at the factory to a unique code. The receiver is programmed by sending a signal to it from the transmitter(s) that are going to be used with it. This stores the transmitter's code into the receiver's memory. The receiver will retain its memory even without power. The receiver will activate only from these "memorized" transmitters. Please refer to the receiver's instructions for maximum transmitter capability.

The transmitters are powered from two Type 2032 lithium "button cell" batteries. When the batteries get low, the bright red LED light on the transmitter will start to dim as the unit is activated. When the red LED no longer lights when the transmitter is activated, the batteries should be replaced.

**MDT-2** - Three-channel transmitter with two buttons on the front and one button on the top (each button performs a separate function). The top button can be hidden with the top button cover supplier

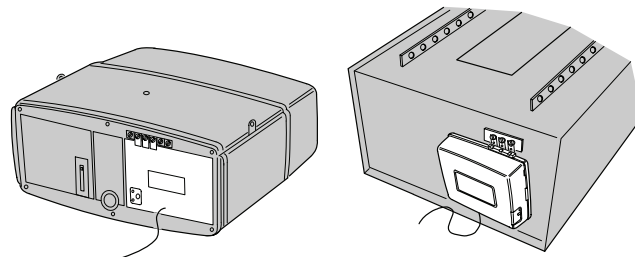
**MDT-4** - Five-channel transmitter with four buttons on the front and one button on the top (each button performs a separate function). The top button can be hidden with the top button cover supplier



MDT-2

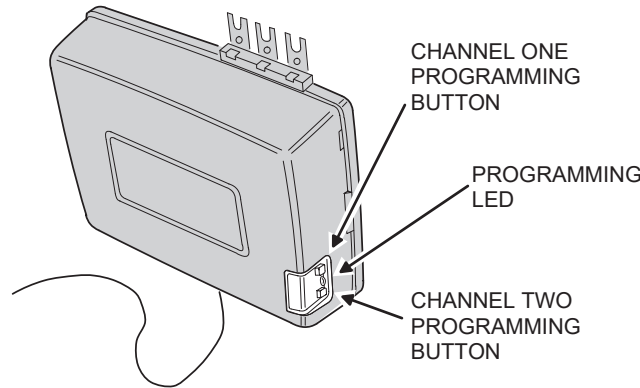
MDT-4

**STEP 1 Receiver Installation.** Connect the receiver to the garage door operator as described in the receiver's Installation Instructions. Apply power to the operator before programming.



CONNECT RECEIVER TO GARAGE DOOR OPERATOR

**STEP 2A MDR/MDRNR/MDR2 Program button and LED Location.** Locate the program button and LED on the side of the receiver case.

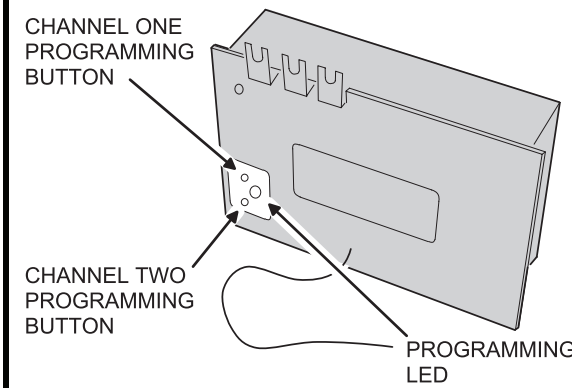


CHANNEL ONE PROGRAMMING BUTTON

PROGRAMMING LED

CHANNEL TWO PROGRAMMING BUTTON

**STEP 2B MDRM/MDRM2 Program button and LED Location.** Locate the program button and LED on the back of the receiver case.



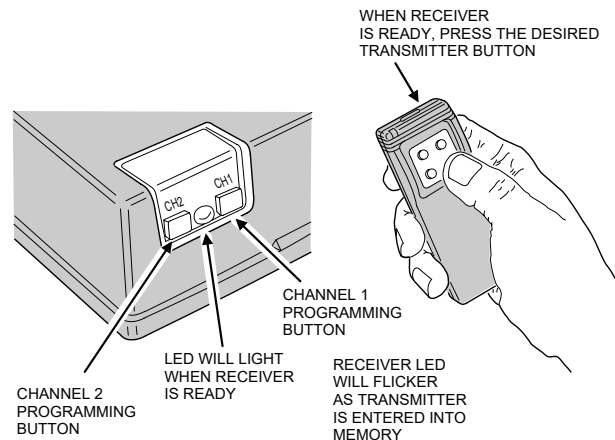
CHANNEL ONE PROGRAMMING BUTTON

CHANNEL TWO PROGRAMMING BUTTON

PROGRAMMING LED

**STEP 3 Program receiver.** Momentarily press the receiver's program button (channel one or two). The red programming LED will light if there's room in the receiver's memory for another transmitter. The LED stays on for about 5 seconds. **A transmitter must be entered while the LED is on.** Press the desired transmitter button. The LED will flicker indicating that the receiver has accepted the transmitter.

- ☒ **NOTE:** Be sure to press the receiver program button for less than 2 seconds.
- ☒ **WARNING!** Door operator will not activate when the receiver is being programmed from the transmitter, but the door operator will activate the next time the transmitter is activated after programming.
- ☒ **NOTE:** The programming LED also monitors radio signals entering the receiver. It is common to see an occasional blink from the LED. The LED will also light when any transmitter tuned to the receiver's frequency (programmed into the receiver or not) is activated.



WHEN RECEIVER IS READY, PRESS THE DESIRED TRANSMITTER BUTTON

CHANNEL 1 PROGRAMMING BUTTON

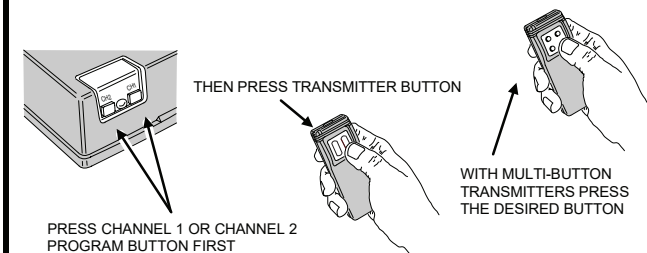
LED WILL LIGHT WHEN RECEIVER IS READY

RECEIVER LED WILL FLICKER AS TRANSMITTER IS ENTERED INTO MEMORY

CHANNEL 2 PROGRAMMING BUTTON

**STEP 4 Add additional transmitters.** Repeat Step 3 for each transmitter used with the receiver. Be sure to press the receiver's program button **each time a new transmitter or a different transmitter button on a multi-button transmitter is pressed.**

If the LED doesn't come on when the receiver's program button is pressed, the receiver's memory is full. Use the erase function (Step 7) to remove transmitters from the receiver's memory.



THEN PRESS TRANSMITTER BUTTON

PRESS CHANNEL 1 OR CHANNEL 2 PROGRAM BUTTON FIRST

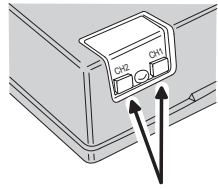
WITH MULTI-BUTTON TRANSMITTERS PRESS THE DESIRED BUTTON

INSTR, INST, DNT00053A / DNT00054A  
 Linear P/N: 10027318 Rev-A  
 Material: 20 Lb. Mead Bond  
 Size: 8.500" x 11.000" Ink:  
 Black  
 Scale: 1-1  
 Side 1 of 2

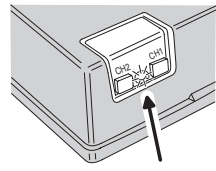
INSTR, INST, DNT00053A / DNT00054A  
 Linear P/N: 10027318 Rev-A  
 Material: 20 Lb. Mead Bond  
 Size: 8.500" x 11.000" Ink:  
 Black  
 Scale: 1-1  
 Side 2 of 2

**STEP 5 Review memory.** Press and hold the receiver's program button (channel one or two) until the LED begins to flash (about 3 seconds) and then release the button. Count the number of flashes. The number of flashes equals the number of transmitters programmed into that channel of the receiver.

☒ **NOTE: Don't hold down the programming button longer than 5 seconds, the receiver's memory for that channel will be erased (Step 7).**

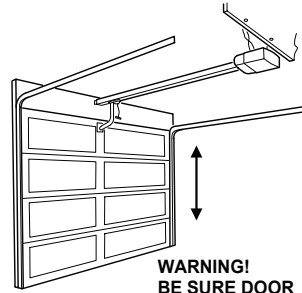


PRESS PROGRAM BUTTON (CHANNEL 1 OR 2) FOR THREE SECONDS THEN RELEASE

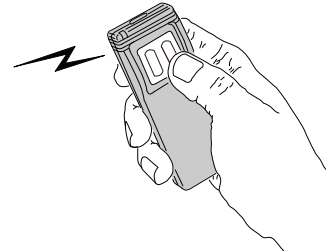


LED WILL FLASH, COUNTING THE TOTAL NUMBER OF TRANSMITTERS PROGRAMED TO THAT CHANNEL

**STEP 6 Test receiver.** Be sure door area is clear. Activate each transmitter. The receiver relay should click (relay output models only) and the operator should activate. **Wait 2 seconds between each activation.**

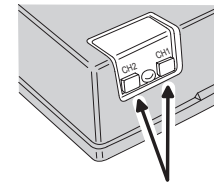


**WARNING!**  
BE SURE DOOR AREA IS CLEAR OF OBSTRUCTIONS

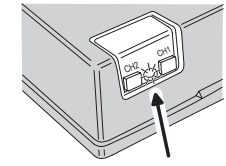


PRESS TRANSMITTER BUTTON TO TEST

**STEP 7 Erasing receiver memory.** Transmitters may be erased from the receiver's memory by pressing and holding the receiver's program button (channel one or two) for 5 seconds or more. After the LED blinks (count of transmitters) it will blink one more time for channel one and twice for channel 2 as the receiver's memory for that channel is erased. **All transmitters for each receiver channel are erased at the same time.**



PRESS PROGRAM BUTTON (CHANNEL 1 OR 2) FOR FIVE SECONDS OR MORE

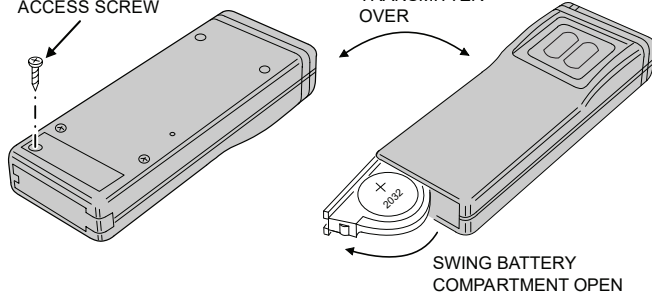


LED WILL FLASH, COUNTING THE TOTAL NUMBER OF TRANSMITTERS PROGRAMED TO THAT CHANNEL. THEN IT WILL BLINK ONE MORE TIME AS THE TRANSMITTERS ARE ERASED FROM THAT CHANNEL

**INFO 1A Opening battery compartment.** To access the transmitter's batteries remove the battery access screw on the back of the unit. Flip the unit over so that the front is facing you. Use a small screwdriver to open the battery compartment.

REMOVE BATTERY ACCESS SCREW

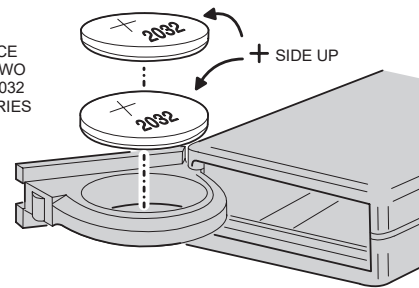
FLIP TRANSMITTER OVER



SWING BATTERY COMPARTMENT OPEN

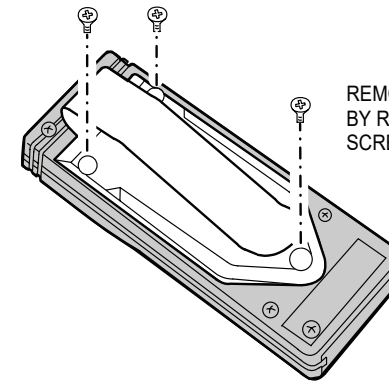
**INFO 1B Replacing transmitter batteries.** Replace the two batteries with two Type 2032 lithium batteries or equivalent. The batteries stack on top of each other with the (+) sides facing the front of the transmitter. Replace with new batteries then close the battery compartment, replace battery access screw and test transmitter.

REPLACE WITH TWO TYPE 2032 BATTERIES



+ SIDE UP

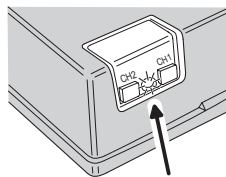
**INFO 2 Visor Clip Removal.** The visor clip can be removed by removing the three screws as shown. Slide the clip off the retaining plate and reattach the plate to the transmitter.



REMOVE VISOR CLIP BY REMOVING THREE SCREWS

☒ **NOTE: The same transmitter (or the same transmitter button on multi-button transmitters) cannot be programmed into both receiver channels 1 and 2.**

☒ **NOTE: If the receiver's LED flashes continuously when a transmitter isn't being activated, the receiver is too close to an electrical noise source. Move the receiver away from the noise source or call technical services for assistance.**



CONTINUOUSLY FLASHING LED MAY INDICATE ELECTRICAL NOISE INTERFERENCE

**LIMITED WARRANTY**

This product is warranted to the consumer against defects in material and workmanship for one year from the date of purchase. This warranty applies to first retail buyers of new devices. Warrantor will repair, or at its option, replace, any device it finds that requires service under this warranty, and will return the repaired or replaced device to the consumer at the warrantor's cost. For warranty service and shipping instructions contact warrantor at the address shown below. Devices must be sent to warrantor for service at owner's expense. The remedies provided by this warranty are exclusive. Implied warranties under state law are to the one year period of this written warranty. Some states do not allow limitations on how long an implied warranty lasts, so the above limitation may not apply to you. In order to be protected by this warranty, save your proof of purchase and send copy with equipment should repair be required. This warranty gives you specific legal rights, and you may also have other rights which vary from state to state.

All products returned for warranty service require a Return Product Authorization Number (RPA#). Contact Linear Technical Services at 1-800-421-1587 for an RPA# and other important details.

**FCC & IC Notice**

This device complies with Part 15 of the FCC Rules and Industry Canada license exempt standard(s). Operation is subject to the following two conditions:

- 1) This device may not cause harmful interference, and
- 2) This device must accept any interference received, including interference received that may cause undesired operation.

Le présent appareil est conforme aux CNR d'Industrie Canada applicables aux appareils radio exempts de licence. L'exploitation est autorisée aux deux conditions suivantes:

- 1) (1) l'appareil ne doit pas produire de brouillage, et
- 2) (2) l'utilisateur de l'appareil doit accepter tout brouillage radioélectrique subi, même si le brouillage est susceptible d'en compromettre le fonctionnement.

**WARNING:** Changes or modifications not expressly approved by the manufacturer could void the user's authority to operate the equipment.