

NOTES: (UNLESS OTHERWISE SPECIFIED)

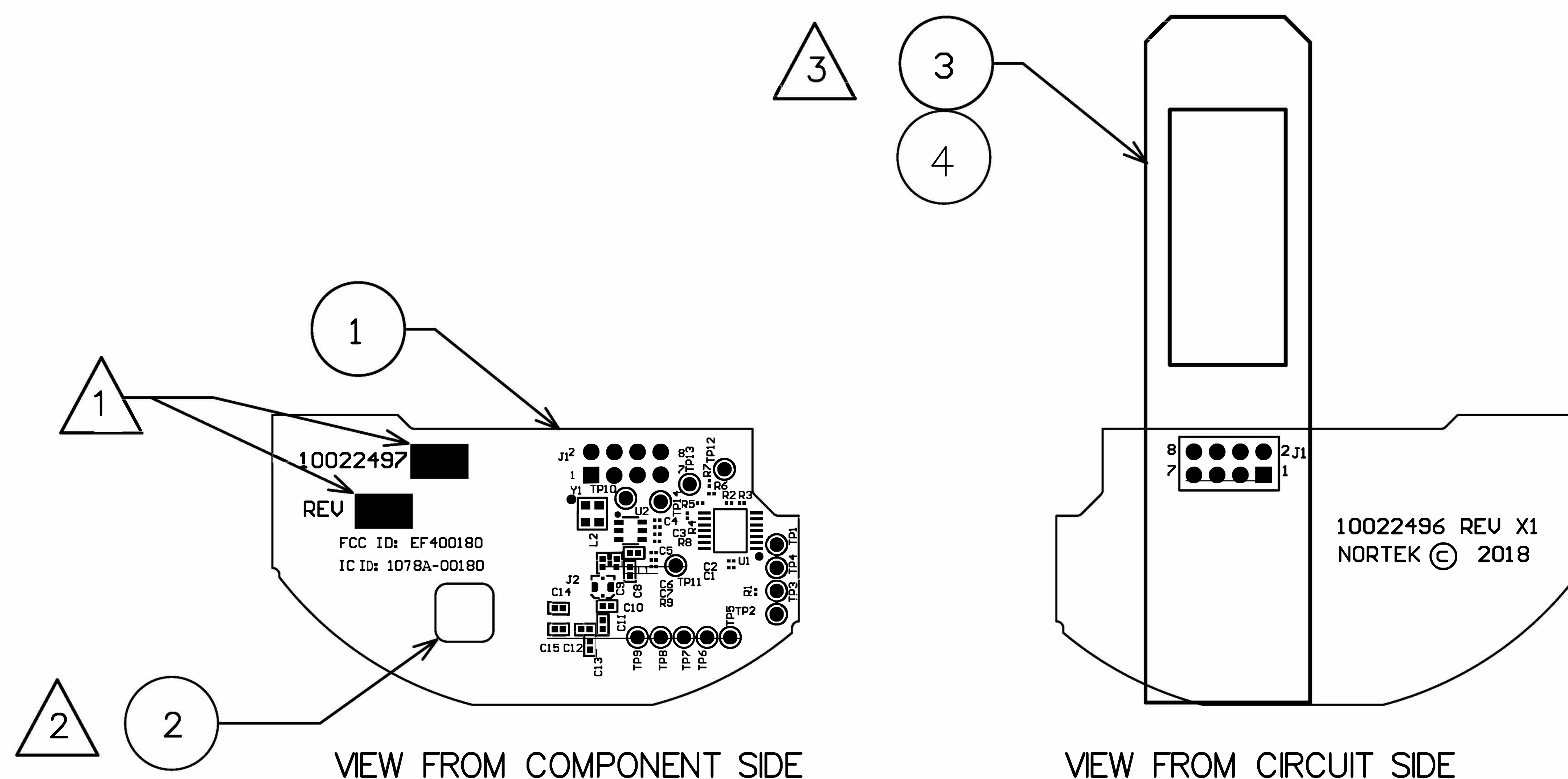
1 MARK ASSEMBLY DASH NUMBER AND REVISION LETTER USING .12 [3.0] HIGH CHARACTERS, PERMANENT INK, CONTRASTING COLOR, APPROXIMATELY WHERE SHOWN.

2 INSTALL LABEL (ITEM 2) APPROXIMATELY WHERE SHOWN.

3 INSTALL PULL TAB (ITEM 3) ON CIRCUIT SIDE. J1 FITS THROUGH SLOT IN TAB. PLACE ID LABEL (ITEM 4) APPROXIMATELY WHERE SHOWN.

4. INCLUDE UNINSTALLED TXID LABEL (ITEM 25) WITH PCB ASSEMBLY INSIDE THE SHIPPING BAG. THE LABEL WILL BE USED BY EI ELECTRONICS ON THE F/G BOX.
5. FINISHED ASSEMBLY TO BE ROHS COMPLIANT.

REVISIONS			
REV	DESCRIPTION	DATE	APPROVED
X1	ENGINEERING RELEASE		
X2	ECO-024656		



The label is silkscreened onto the PCB with a permanent ink

SEE SEPARATE PARTS LIST

THE INFORMATION CONTAINED IN THIS DRAWING IS THE SOLE PROPERTY OF NORTEK SECURITY & CONTROL. ANY REPRODUCTION IN PART OR AS A WHOLE WITHOUT WRITTEN PERMISSION OF NORTEK SECURITY & CONTROL IS PROHIBITED.

UNLESS OTHERWISE NOTED ALL DIMENSIONS ARE INCHES (MM): TOLERANCES: DECIMALS ANGLES: +/-5 DEG .XX+/- .02 [5] ROUNDNESS:+/-0.005 [1.3] .XXX+/- .005 [1.3] FLATNESS:+/-0.005 [1.3] CONCENTRICITY:+/-0.005 [1.3]		PROJECT:					
MATERIAL: /		CAD OPERATOR: M.KINGSLEY	DATE 07/23/18				
FINISH: /		CHECKED:	DATE	SIZE: B		DRAWING NO.: 10022497	REV.: X2
		APPROVED:	DATE	SCALE: NONE		DO NOT SCALE DRAWING	SHEET: 1 OF 1