

8

7

6

5

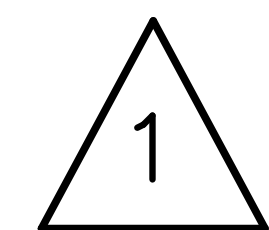
4

3

2

1

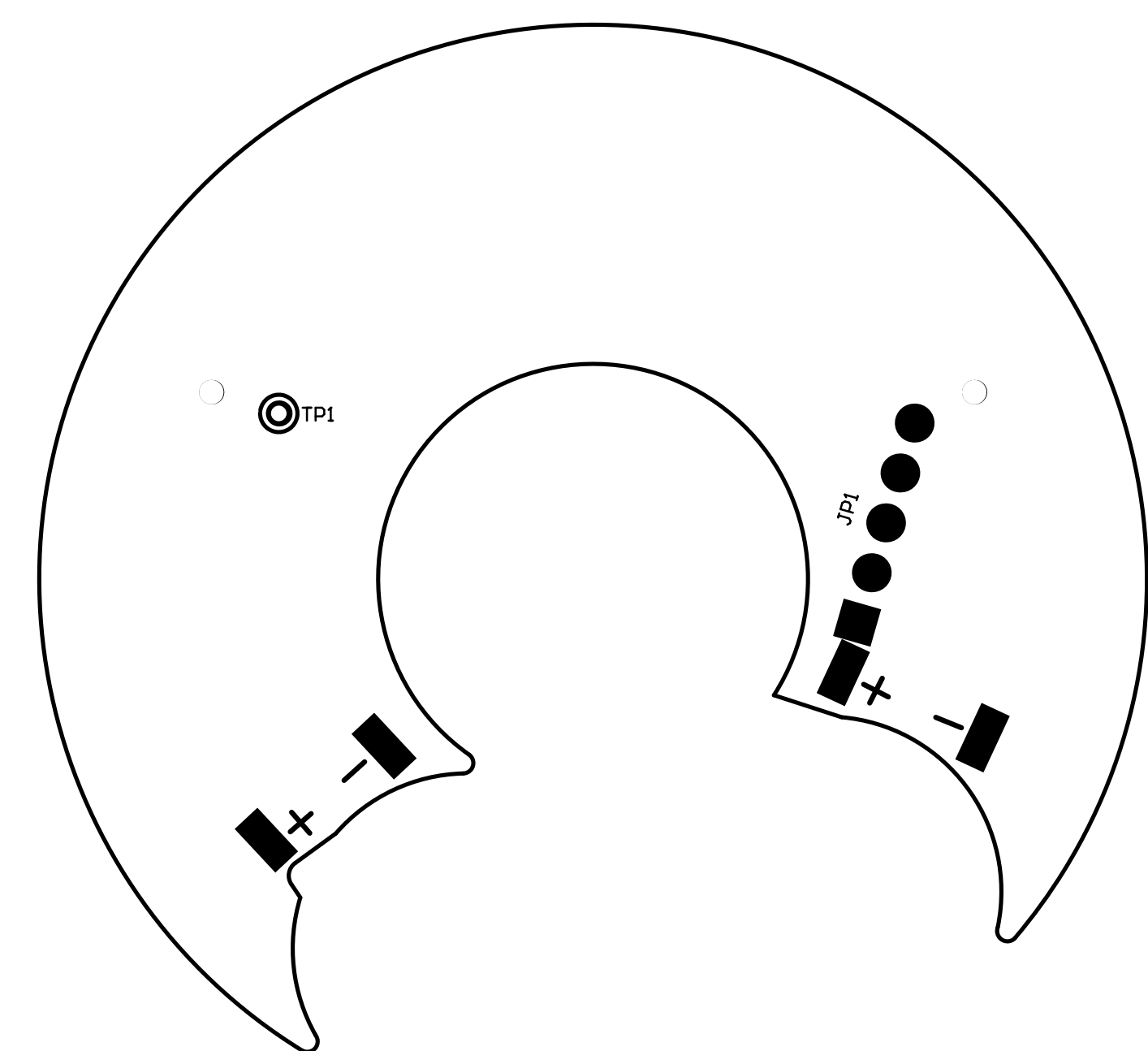
NOTES: (UNLESS OTHERWISE SPECIFIED)



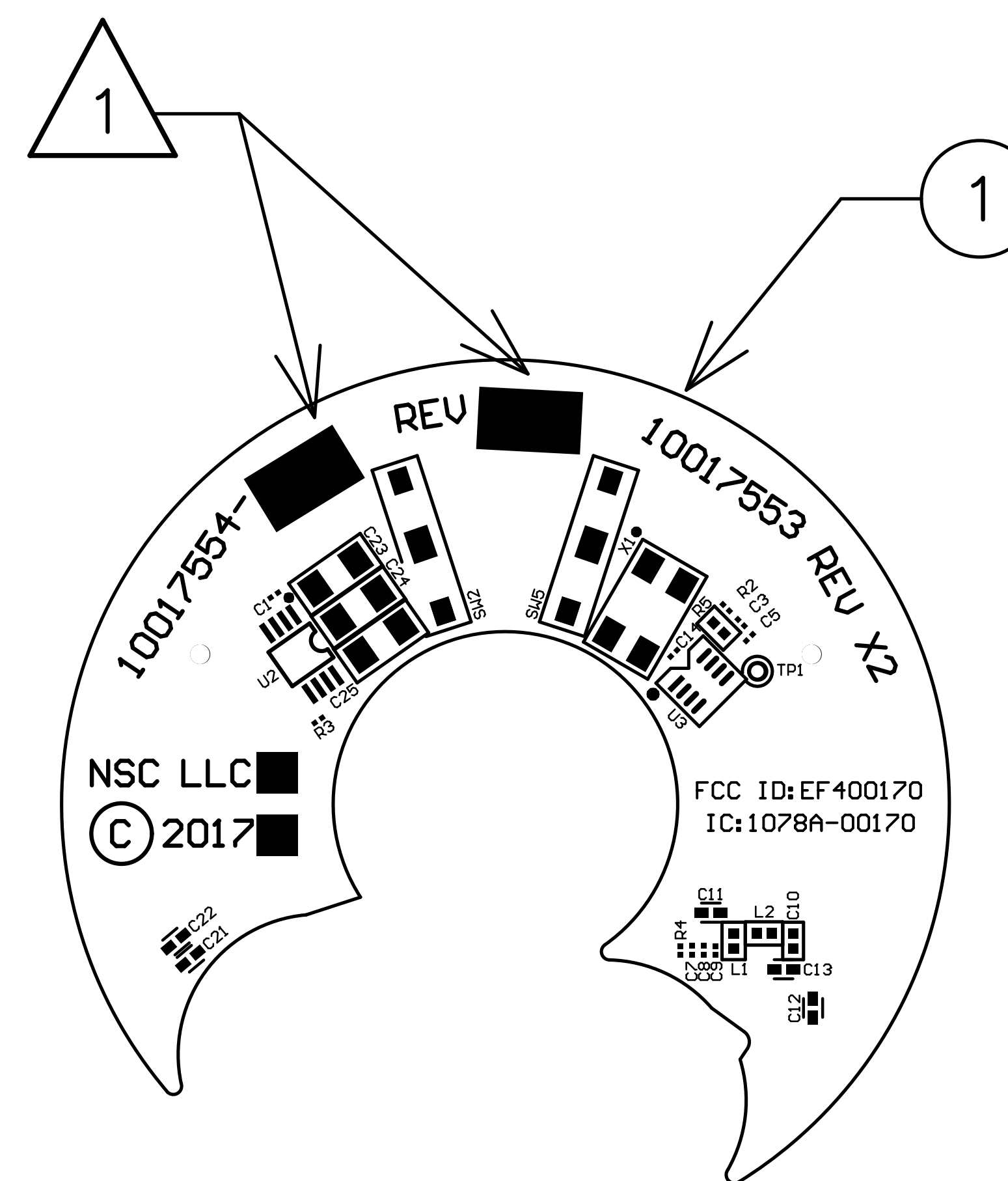
MARK ASSEMBLY DASH NUMBER AND REVISION LETTER USING .12 [3.0] HIGH CHARACTERS, PERMANENT INK, CONTRASTING COLOR, APPROXIMATELY WHERE SHOWN.

2. INSTALLATION OF BATTERIES IS PART OF THE TEST PROCEDURE. PREPERATION OF LEADS AND BATTERY POSITIONING IS DESCRIBED IN DOCUMENT NUMBER 10017451.

REVISIONS			
REV	DESCRIPTION	DATE	APPROVED
X1	ENGINEERING RELEASE		
X2	MOVED COMPS 1MM FROM INNER BOARD EDGE.		



VIEWED FROM CIRCUIT SIDE



VIEWED FROM COMPONENT SIDE

SEE SEPARATE PARTS LIST

THE INFORMATION CONTAINED IN THIS DRAWING IS THE SOLE PROPERTY OF NORTEK SECURITY & CONTROL. ANY REPRODUCTION IN PART OR AS A WHOLE WITHOUT WRITTEN PERMISSION OF NORTEK SECURITY & CONTROL IS PROHIBITED.

UNLESS OTHERWISE NOTED ALL DIMENSIONS ARE INCHES (MM): TOLERANCES: DECIMALS ANGLES: +/-5 DEG .XX+/- .02 [13] ROUNDNESS:+/-0.05 [13] .XXX+/- .005 [13] FLATNESS:+/-0.05 [13] CONCENTRICITY:+/-0.05 [13]		PROJECT:			
MATERIAL:		CAD OPERATOR: M. CHAN	DATE 06-02-17		
FINISH:		CHECKED:	DATE	SIZE: B	DRAWING NO.: 10017554
		APPROVED:	DATE	REV.: X2	
		APPROVED:	DATE	SCALE: NONE	DO NOT SCALE DRAWING
				SHEET: 1 OF 1	

8

7

6

5

4

3

2

1