

47
6.3V
L666
94V-0

22
16G
646

PIC16LF1824
-11SCL
1607M8C

PIC16C705
16C705
29C

B16919 REV. 3 1





47
6.3V
L666
94V-0

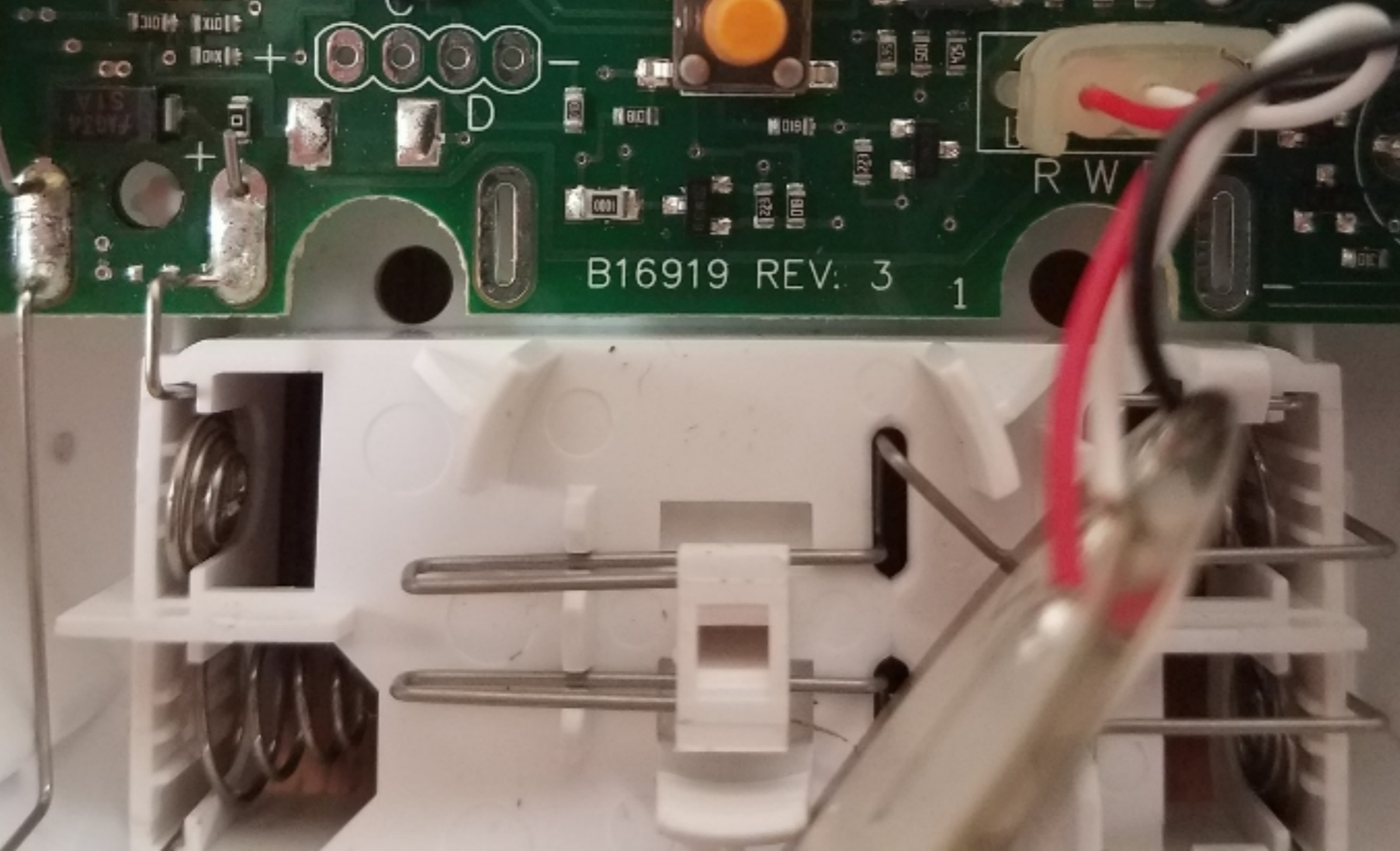
22
16G
646

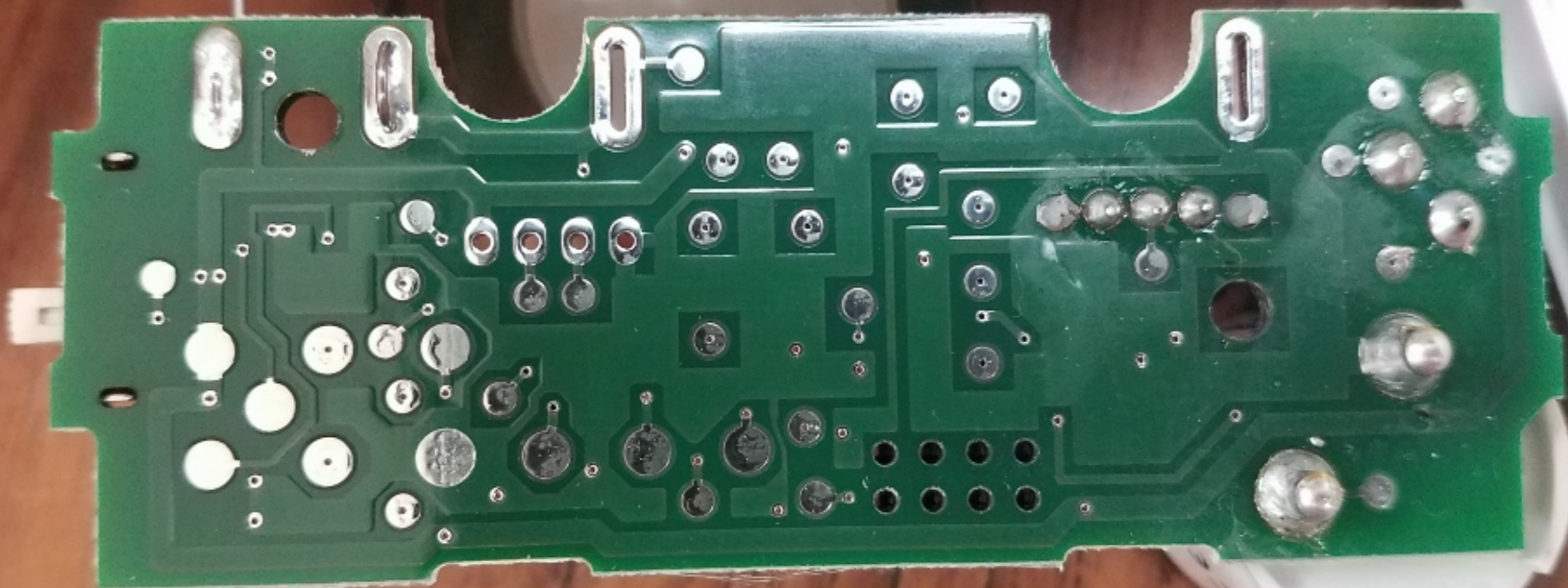
PROXIMITY
SENSOR
IC

PROXIMITY
SENSOR
IC

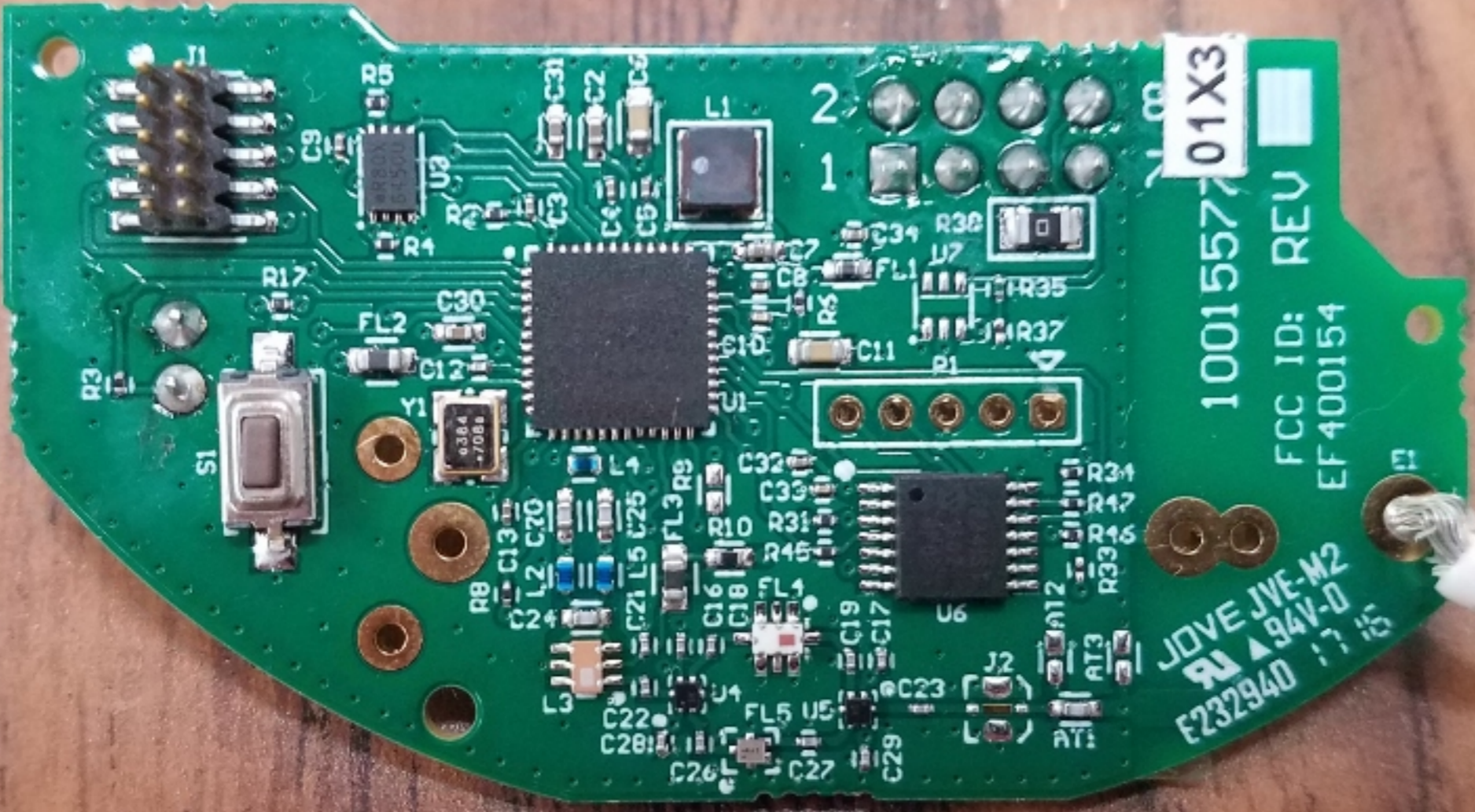
1000
1000

B16919 REV: 3 1





Proto1.5
#036



1001557701X3

FCC ID: REV
EF400154

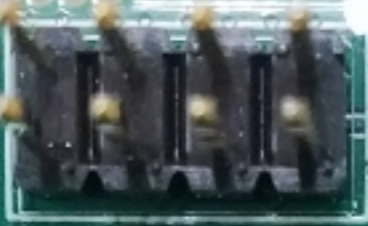
JOVE JVE-M2
94V-0
E232940 17 IS

Component labels on the PCB:
R1, R2, R3, R4, R5, R6, R7, R8, R9, R10, R11, R12, R13, R14, R15, R16, R17, R18, R19, R20, R21, R22, R23, R24, R25, R26, R27, R28, R29, R30, R31, R32, R33, R34, R35, R36, R37, R38, R39, R40, R41, R42, R43, R44, R45
C1, C2, C3, C4, C5, C6, C7, C8, C9, C10, C11, C12, C13, C14, C15, C16, C17, C18, C19, C20, C21, C22, C23, C24, C25, C26, C27, C28, C29, C30, C31, C32, C33, C34
U1, U2, U3, U4, U5, U6, U7
S1
Y1
L1, L2, L3, L4, L5
FL1, FL2, FL3, FL4, FL5
J1, J2
AT1, AT2, AT3
J15, J16, J17, J18, J19, J20, J21, J22, J23, J24, J25, J26, J27, J28, J29, J30, J31, J32, J33, J34, J35, J36, J37, J38, J39, J40, J41, J42, J43, J44, J45, J46, J47, J48, J49, J50, J51, J52, J53, J54, J55, J56, J57, J58, J59, J60, J61, J62, J63, J64, J65, J66, J67, J68, J69, J70, J71, J72, J73, J74, J75, J76, J77, J78, J79, J80, J81, J82, J83, J84, J85, J86, J87, J88, J89, J90, J91, J92, J93, J94, J95, J96, J97, J98, J99, J100



17110A000213

8
7
6
5
4
3
2
1



J3

10015576 REV X2
NORTEK LLC

© 2017

TP1

TP1

TP10

TP13 TP11

TP15

TP12

TP1 TP8

TP20

TP16

TP4

BT1

BT1

BT1

TP7

-18

TP1

TP19

TP17

TP5

TP6

-18

TP2

+

+

-

