





Model: EIA660W
Single Station Smoke Alarm
with Supplemental Heat Alarm

WARNING
Please see user manual for installation information on maintenance and battery use of this device. Improper use of this device may reduce battery life. Use only batteries specified in the operating instructions. Maintenance may have a detrimental effect on alarm operation. Standby: No Beep or Flash
Low Battery: 1 beep + 1 yellow flash every 48 sec
Alarm: 3 long beeps, repeating with flashing red LED
End of Life: 3 beeps with 3 yellow flashes
Alarm Silence: 1 red flash every 8 secs
Sensitivity: 1.35% - 4.0% O₃SF₆
Conforms to ANSI/UL 217

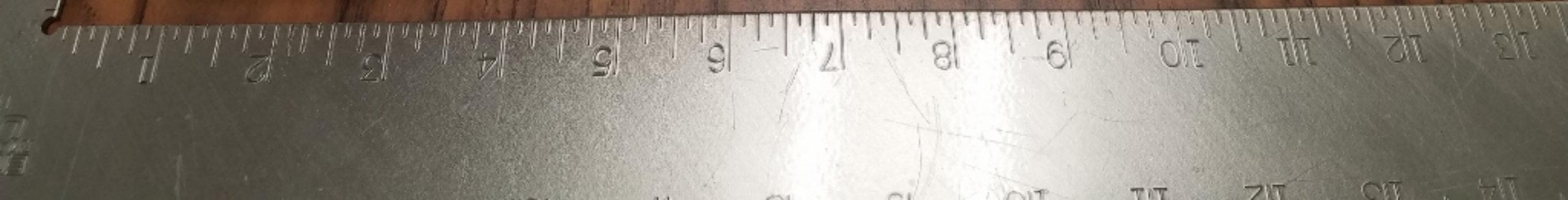
For repair or service return to:
Ei Electronics US, 2 Turners
Road, Suite 209, Farmville
Connecticut 06030

Made in Ireland

Please read user manual
Use only NiMH or NiCd
batteries

PCB
1001 0981
01X3
1001 0981
1001 0981

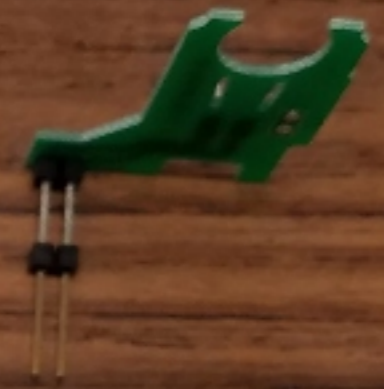
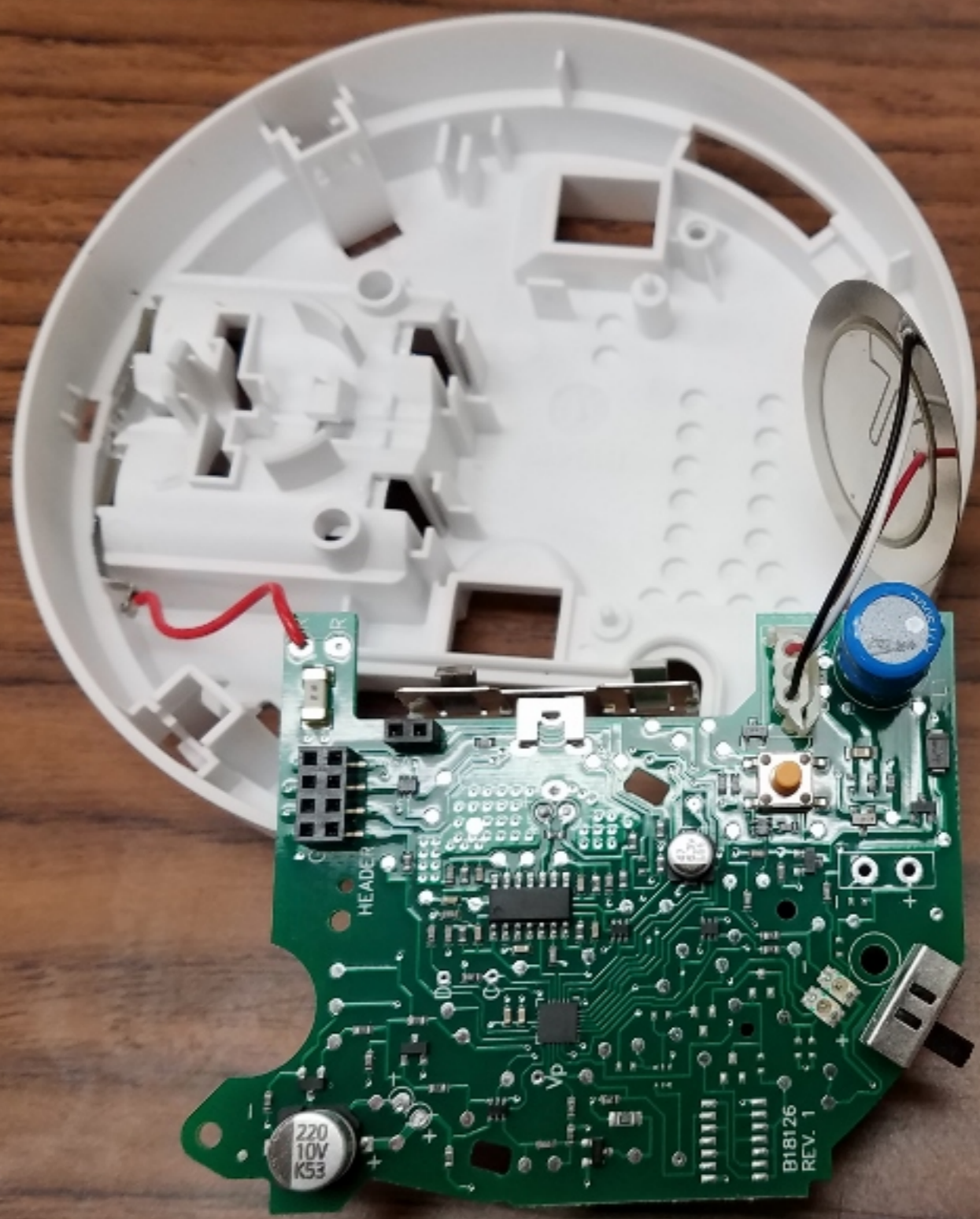
5/19
5/19

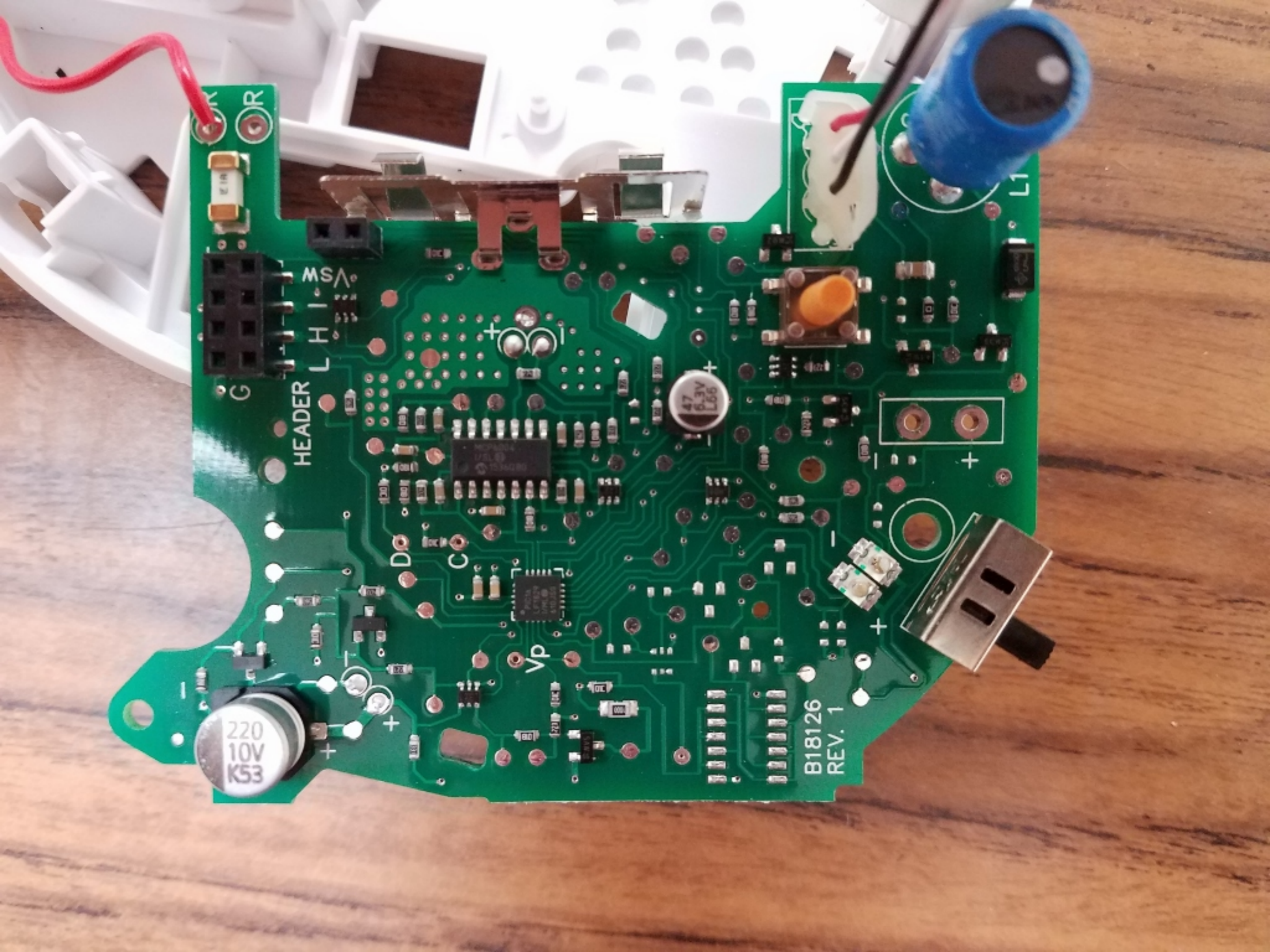












220
10V
K53

47
6.3V
L66

B18126
REV. 1

HEADER
L H I

MSV

G

Vp

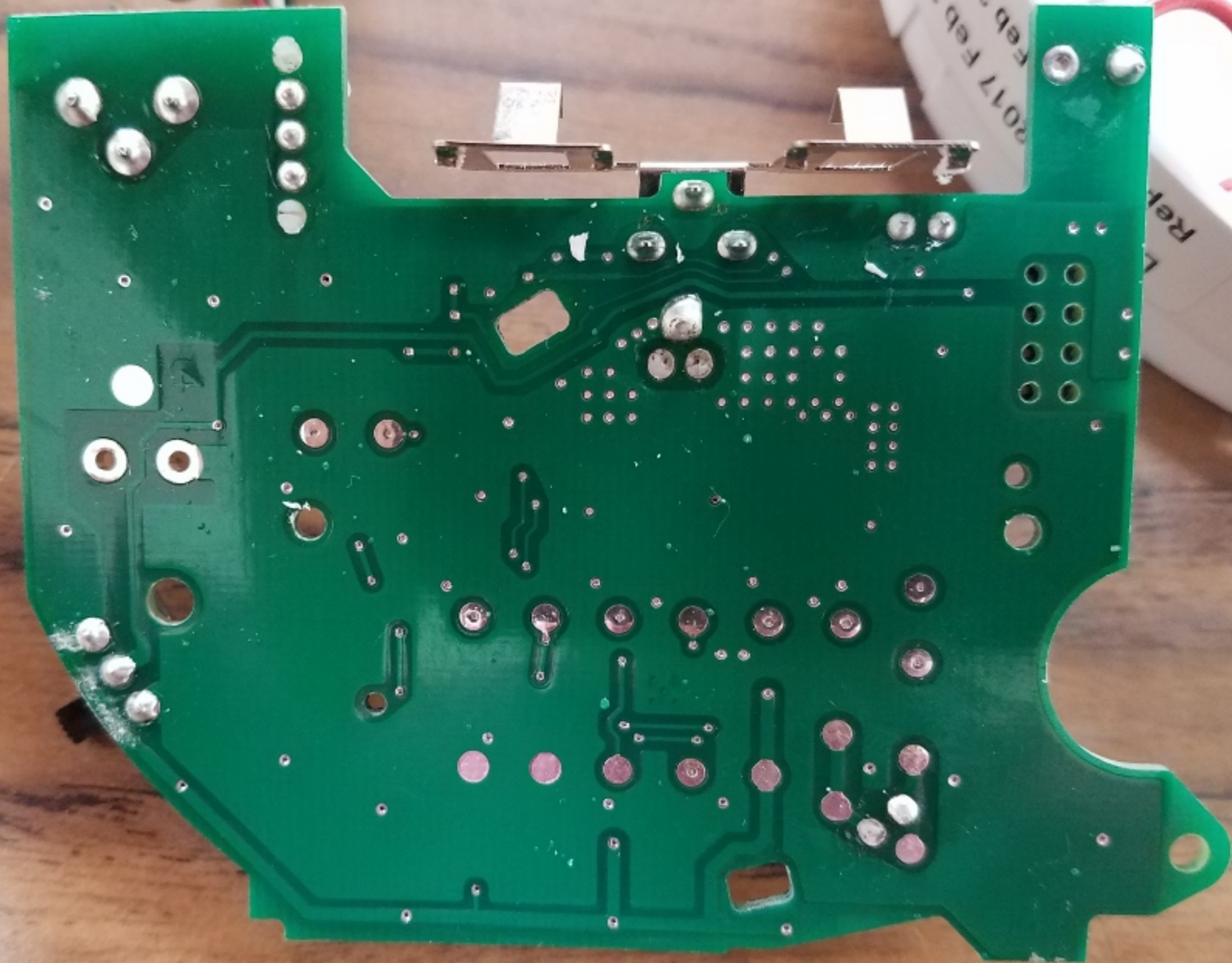
D

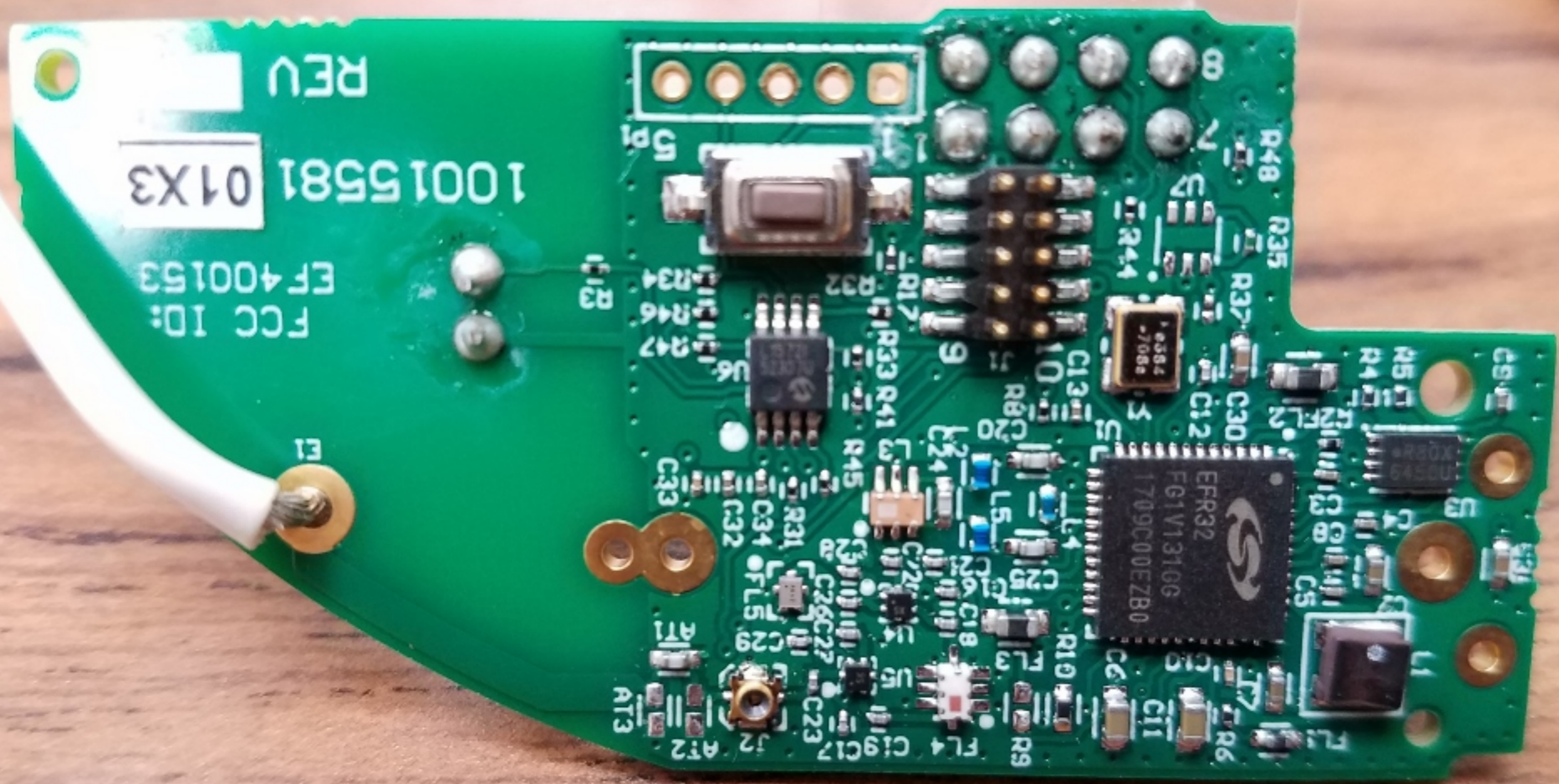
C

L1

R

10K





REV

10015581 01X3

FCC ID: EF400153

E1

5



10015580 REV X2
NORTEK LLC

© 2017

BT1



TP2

BT-

BT1

BT-

TP16

TP19

TP3

TP6

TP8

TP4

TP20

TP5

TP14

TP12

TP15

TP13

JOVE JVE-M2
9A Δ 94V-0
E232940
1617

TP7

TP10

TP11

TP17

J3

1

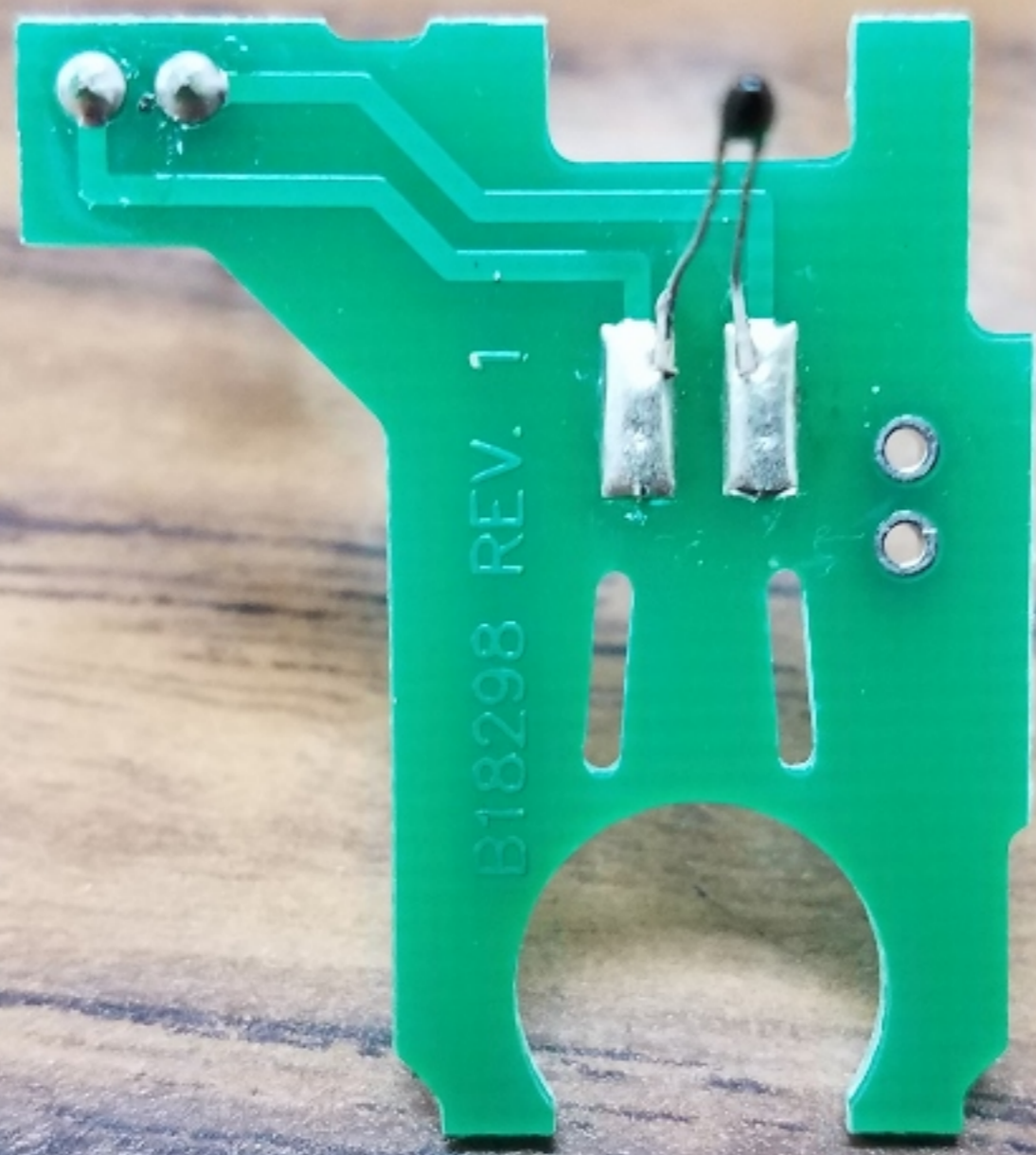
7

8

17110A000342

10015580

8F



B18298 REV. 1

