

DC
COM

12V

3.3V

OSC

PS

AD

AS

LD

LS

R101

R102

R103

UR2

UT2

SS

LST

A_GREEN
C
D4
A_RED

D5

D6

SG1

SG2

RU

D12

Linear LLC © 2014

287087 REV A

237088 REV 04C

508

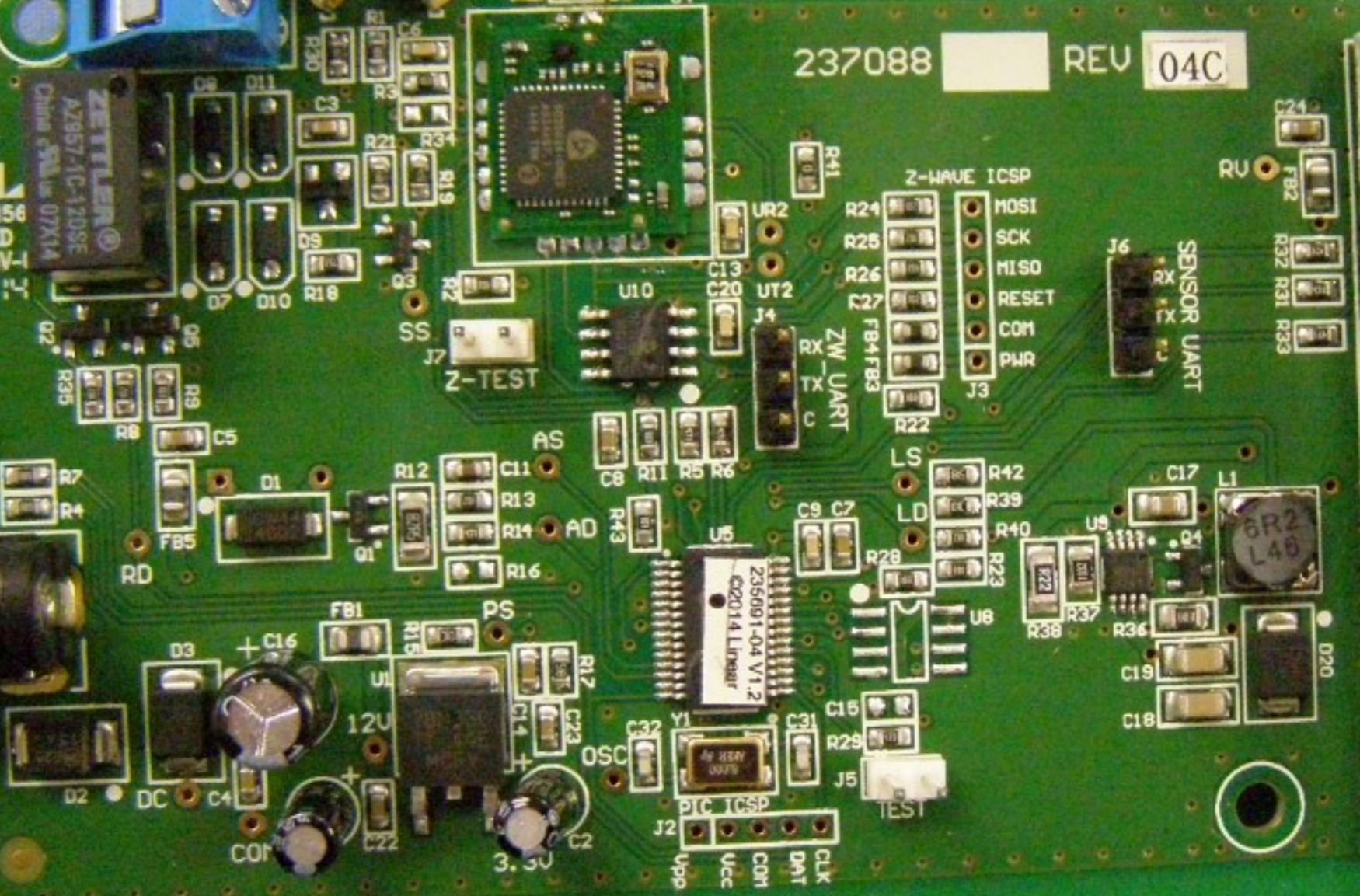
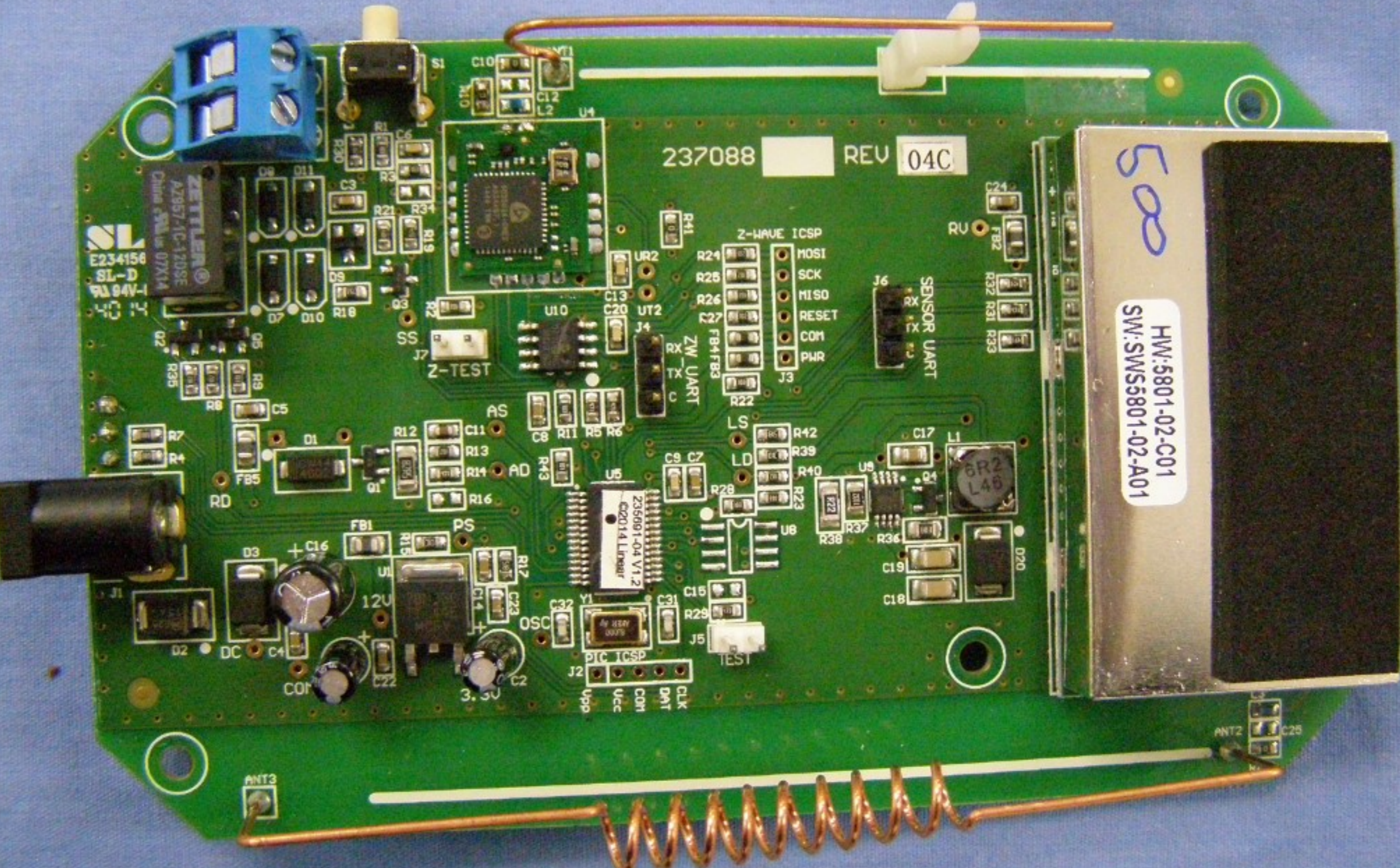
HW:5801-02-C01
SW:SW5801-02-A01

E234156
SL-D
93 84V-I
40 14

ZETTLER
AZ957-1C-120SE
China 07X14

235091-04 V1.2
©2014 Linear

6R2
L46



Z-HAVE ICSP
MOSI
SCK
MISO
RESET
COM
PWR

ZW_UART
RX
TX
C

SENSOR UART
*X
*X
*X

IC ICSP
CLK
DAT
COM
Vcc
Gpp

ANT2 C25

ANT3

TP_RSSI

TP_RX_DATA

5801-D

TP_REV TP_VER

OC-106

94V-0H



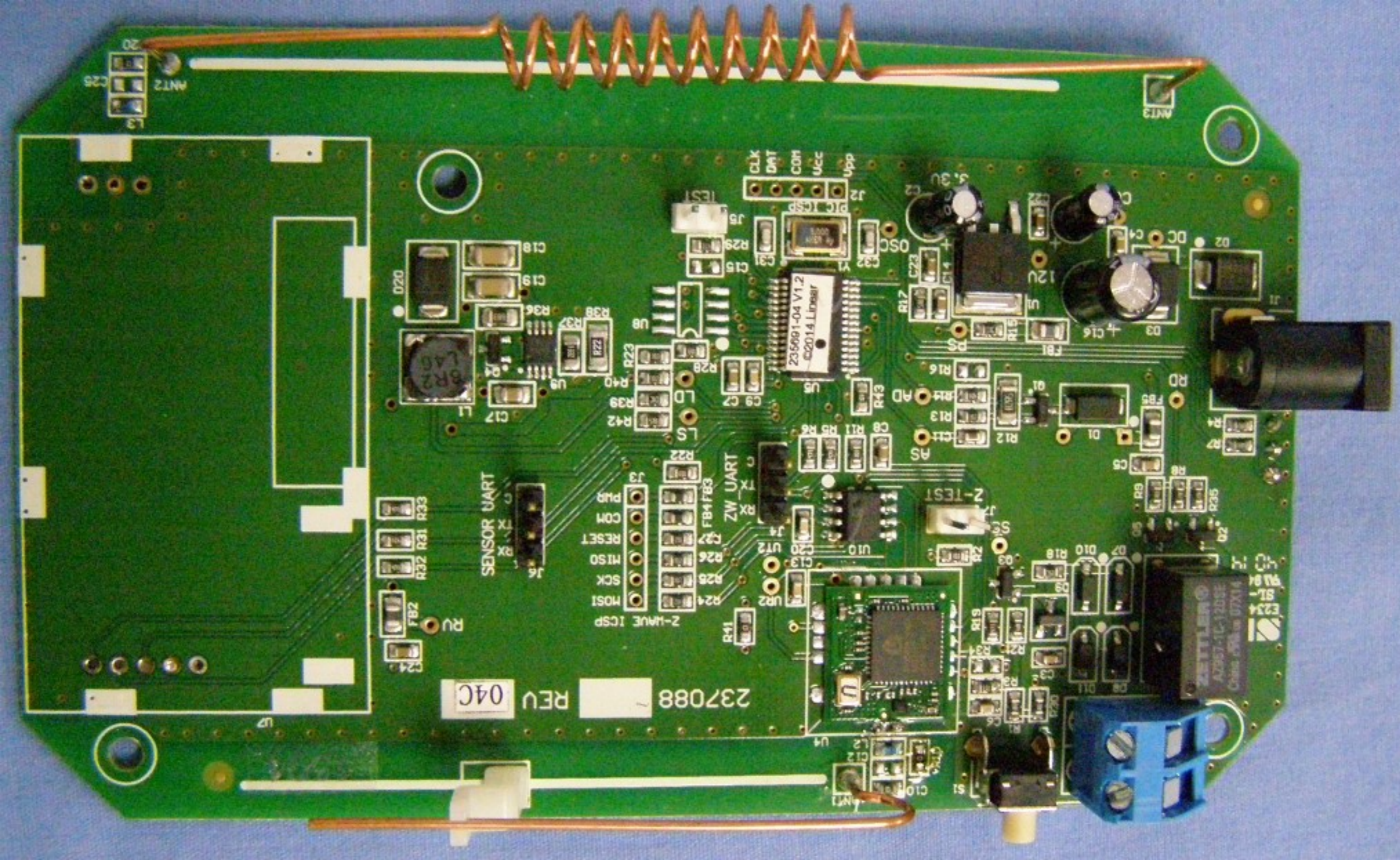
4.10

1450

ANTENNA P2

ANTENNA P2

AGC



237088 REV 04C

ZETTLER
AD957-TC-12BSE
Chassis 12V to 0.7V/14

235691-04 V1.2
DC2014 Linear

SENSOR UART

ZW_UART

Z-HAVE ICSP
R24 R25 R26 R27 R28 R29
FB4 FB3
R30 R31 R32 R33
R34 R35 R36 R37 R38 R39 R40

RU FB2 R21 R22 R23 R24 R25 R26 R27 R28 R29 R30 R31 R32 R33 R34 R35 R36 R37 R38 R39 R40

ANT3

ANT2
L3 C25

E234
SL-9A94

