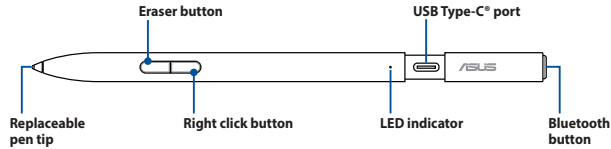


Getting to know your ASUS Pen 2.0 (Active Stylus)



Package contents

- ASUS Pen x 1 (Model Name: SA203H)
- Pen tip x 4 (2H x 1, H x 1, HB x 1, B x 1)
- USB Type-C* charging cable x 1
- Quick Start Guide x 1

Package contents

- ASUS Pen x 1 (Model Name: SA203H)
- Pen tip x 4 (2H x 1, H x 1, HB x 1, B x 1)
- USB Type-C* charging cable x 1
- Quick Start Guide x 1

LED indicator lights

Color	Bluetooth Status
Blinking Blue	Pairing
Solid White	Paired

Color	Battery Status
Solid White	Fully charged
Solid Orange	Charging
Blinking Red	Battery power lower than 35%

LED indicator lights

Color	Bluetooth Status
Blinking Blue	Pairing
Solid White	Paired

Color	Battery Status
Solid White	Fully charged
Solid Orange	Charging
Blinking Red	Battery power lower than 35%

Getting started

1. Charging your ASUS Pen

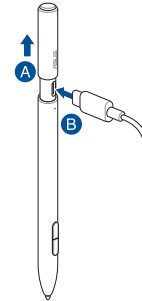
- Gently pull the USB Type-C* port cover to reveal the port.
- Align and place the bundled USB Type-C* charging cable onto the USB Type-C* port.
- Connect the USB charging cable to a power source to start charging.

1. Charging your ASUS Pen

- Gently pull the USB Type-C* port cover to reveal the port.
- Align and place the bundled USB Type-C* charging cable onto the USB Type-C* port.
- Connect the USB charging cable to a power source to start charging.

NOTE: To activate your ASUS Pen, ensure to charge your ASUS Pen before using it for the first time.

NOTE: To activate your ASUS Pen, ensure to charge your ASUS Pen before using it for the first time.



2. Pairing your ASUS Pen with the Bluetooth device

- Ensure the other device is Bluetooth enabled.
- Press and hold the Bluetooth button on your ASUS Pen until the LED indicator starts blinking blue light.
- On the other device, select "ASUS Pen" from the Bluetooth device list to start pairing.
- The LED indicator will turn white once the pairing process is complete.

2. Pairing your ASUS Pen with the Bluetooth device

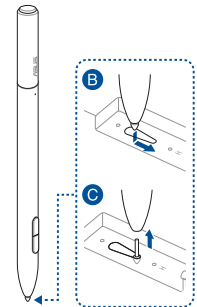
- Ensure the other device is Bluetooth enabled.
- Press and hold the Bluetooth button on your ASUS Pen until the LED indicator starts blinking blue light.
- On the other device, select "ASUS Pen" from the Bluetooth device list to start pairing.
- The LED indicator will turn white once the pairing process is complete.

Replacing the pen tip of your ASUS Pen

- Locate the teardrop-shaped slot on the packaging tray.
- Hold your ASUS pen vertically, then align and slide the current pen tip into the narrow slot.
- Ensure the slot is positioned between the pen tip and the pen, then pull your ASUS pen vertically and remove the pen tip.
- Choose the pen tip you wish to replace, then align and fit the new pen tip.

Replacing the pen tip of your ASUS Pen

- Locate the teardrop-shaped slot on the packaging tray.
- Hold your ASUS pen vertically, then align and slide the current pen tip into the narrow slot.
- Ensure the slot is positioned between the pen tip and the pen, then pull your ASUS pen vertically and remove the pen tip.
- Choose the pen tip you wish to replace, then align and fit the new pen tip.





ASUS Pen 2.0

Active Stylus SA203H

Notices

Simplified EU Declaration of Conformity

ASUSTek Computer Inc. hereby declares that this device is in compliance with the essential requirements and other relevant provisions of Directive 2014/53/EU. Full text of EU declaration of conformity available at <https://www.asus.com/support/>

CE RED RF Output table (Directive 2014/53/EU)

Function	Frequency	E-Field strength (at 10 m)
Active stylus	18-210 KHz	-11.73 dBuA/m

Simplified UKCA Declaration of Conformity

ASUSTek Computer Inc. hereby declares that this device is in compliance with the essential requirements and other relevant provisions of The Radio Equipment Regulations 2017 (S.I. 2017/1206). Full text of UKCA declaration of conformity is available at <https://www.asus.com/support/>

UKCA RF Output table (The Radio Equipment Regulations 2017)

Function	Frequency	E-Field strength (at 10 m)
Active stylus	18-210 KHz	-11.73 dBuA/m

FEDERAL COMMUNICATIONS COMMISSION INTERFERENCE STATEMENT

EQUIPMENT AUTHORIZATION REQUIREMENT.
Devices operating below 490 kHz in which all emissions are at least 40 dB below the limits in §15.209 shall be verified pursuant to the procedures in part 1 of part 2 of this chapter prior to marketing. This device complies with Part 15 of the FCC Rules. Operation is subject to the following two conditions:

- (1) this device may not cause harmful interference, and
 - (2) this device must accept any interference received, including interference that may cause undesired operation.
- This equipment has been tested and found to comply with the limits for a Class B digital device, pursuant to part 15 of the FCC Rules. These limits are designed to provide reasonable protection against harmful interference in a residential installation. This equipment generates, uses and can radiate radio frequency energy and, if not installed and used in accordance with the instructions, may cause harmful interference to radio communications. However, there is no guarantee that interference will not occur in a particular installation. If this equipment does cause harmful interference to radio or television reception, which can be determined by turning the equipment off and on, the user is encouraged to try to correct the interference by one or more of the following measures:

- Reorient or relocate the receiving antenna.
- Increase the separation between the equipment and receiver.
- Connect the equipment into an outlet on a circuit different from that to which the receiver is connected.
- Consult the dealer or an experienced radio/TV technician for help.

Important Notice

This transmitter must not be co-located or operating in conjunction with any other antenna or transmitter.

Radiation Exposure Statement:

The product comply with the FCC portable RF exposure limit set forth for an uncontrolled environment and are safe for intended operation as described in this manual. The further RF exposure reduction can be achieved if the product can be kept as far as possible from the user body or set the device to lower output power if such function is available.

Radiation Exposure Statement:

The product comply with the Canada portable RF exposure limit set forth for an uncontrolled environment and are safe for intended operation as described in this manual. The further RF exposure reduction can be achieved if the product can be kept as far as possible from the user body or set the device to lower output power if such function is available.

Déclaration d'exposition aux radiations:

Le produit est conforme aux limites d'exposition pour les appareils portables RF pour les États-Unis et le Canada établies pour un environnement non contrôlé. Le produit est sûr pour un fonctionnement tel que décrit dans ce manuel. La réduction aux expositions RF peut être augmentée si l'appareil peut être conservé aussi loin que possible du corps de l'utilisateur ou que le dispositif est réglé sur la puissance de sortie la plus faible si une telle fonction est disponible.

Caution:

Any changes or modifications not expressly approved by the grantee of this device could void the user's authority to operate the equipment.

CE Mark Warning

This is a Class B product, in a domestic environment, this product may cause radio interference, in which case the user may be required to take adequate measures.

Compliance Statement of Innovation, Science and Economic Development Canada (ISED)

This device complies with Innovation, Science and Economic Development Canada licence exempt RSS standard(s). Operation is subject to the following two conditions: (1) this device may not cause interference, and (2) this device must accept any interference, including interference that may cause undesired operation of the device.

CAN ICES-003(B)/NMB-003(B)

Déclaration de conformité de Innovation, Sciences et Développement économique Canada (ISED)

Le présent appareil est conforme aux CNR d'Innovation, Sciences et Développement économique Canada applicables aux appareils radio exempts de licence. L'exploitation est autorisée aux deux conditions suivantes: (1) l'appareil ne doit pas produire de brouillage, et (2) l'utilisateur de l'appareil doit accepter tout brouillage radioélectrique subi, même si le brouillage est susceptible d'en compromettre le fonctionnement.

CAN ICES-003(B)/NMB-003(B)

Caution

- replacement of a BATTERY with an incorrect type that can defeat a SAFEGUARD (for example, in the case of some lithium BATTERY types);
- disposal of a BATTERY into fire or a hot oven, or mechanically crushing or cutting of a BATTERY, that can result in an EXPLOSION;
- leaving a BATTERY in an extremely high temperature surrounding environment that can result in an EXPL Caution OSION or the leakage of flammable liquid or gas;
- a BATTERY subjected to extremely low air pressure that may result in an EXPLOSION or the leakage of flammable liquid or gas.

Attention

- Risque d'explosion en cas de remplacement de la pile par une pile de type incorrect.
- Le remplacement d'une PILE par une pile de type incorrect peut neutraliser un SYSTÈME DE SÉCURITÉ E (par exemple dans le cas de certains types de PILES au lithium).
- La mise au rebut d'une PILE dans le feu ou dans un four chaud, ou par écrasement ou découpe, peut entraîner une EXPLOSION.
- L'exposition d'une PILE à un environnement présentant une température extrêmement élevée peut entraîner une EXPLOSION ou une fuite de liquide ou de gaz inflammable.
- L'exposition d'une PILE à une pression d'air extrêmement faible peut entraîner une EXPLOSION ou une fuite de liquide ou de gaz inflammable.

KC: Korea Warning Statement

해당 무선설비는 운용 중 전파섭취 가능성이 있음
(This wireless/radio equipment has a possibility of radio interference during operation)

당해 무선설비는 전파섭취 가능성이 있으므로 인명안전과 관련된 서비스를 할 수 없습니다.

(This wireless/radio equipment can't be used for services of safety in human life because it has a possibility of radio interference)

8 급 기기(가정용 방송통신기기)

이 기기는 가정용(8 급)으로 전차차적할동률측 한 기기로서 주로 가정에서 사용하는 것을 목적으로

하며, 모든 지역에서 사용할 수 있습니다.

FCC COMPLIANCE INFORMATION

Per FCC Part 2 Section 2.1077



Responsible Party: Asus Computer International
Address: 4870 Koval Rd., Fremont, CA 94538

Phone/Fax No.: (510)798-3771/(510)608-6555

hereby declares that the product

Product Name : Active Stylus SA203H
Model Number : SA203H

compliance statement:

This device complies with part 15 of the FCC Rules. Operation is subject to the following two conditions: (1) This device may not cause harmful interference, and (2) this device must accept any interference received, including interference that may cause undesired operation.

Ver. 02/20

NCC: Taiwan Wireless Statement

低功率射頻器材技術規範

「取得審驗證明之低功率射頻器材，非經核准，公司、商號或使用者均不得擅自變更頻率、加大功率或變更原設計之特性及功能。低功率射頻器材之使用不得影響飛航安全及干擾合法通信；經發現有干擾現象時，應立即停用，並改善至無干擾時方得繼續使用。前述合法通信，指依電信管理法規定作業之無線電通信。低功率射頻器材須忍受合法通信或工業、科學及醫療用電波輻射性電機設備之干擾。」

「產品之限用物質含有情況」之相關資訊，請參考下表

單元	限用物質及其化學符號					
	鉛 (Pb)	汞 (Hg)	鎘 (Cd)	鉻 (Cr ⁶⁺)	多環芳烴 (PBB)	多溴二苯醚 (PBDE)
印刷電路板及電子組件	○	○	○	○	○	○
外殼及結構件	—	○	○	○	○	○
傳感器	○	○	○	○	○	○
筆頭	○	○	○	○	○	○

備註 1. "○" 係指該項限用物質之百分比含量未超出百分比含量基準值。
備註 2. "—" 係指該項限用物質為排除項目。



R-R-MSQ-STYLUS-SA203H

Service and Support



Visit our multi-language web site at <https://www.asus.com/support>



1 5 0 6 0 - 1 6 4 0 0 0 0 0