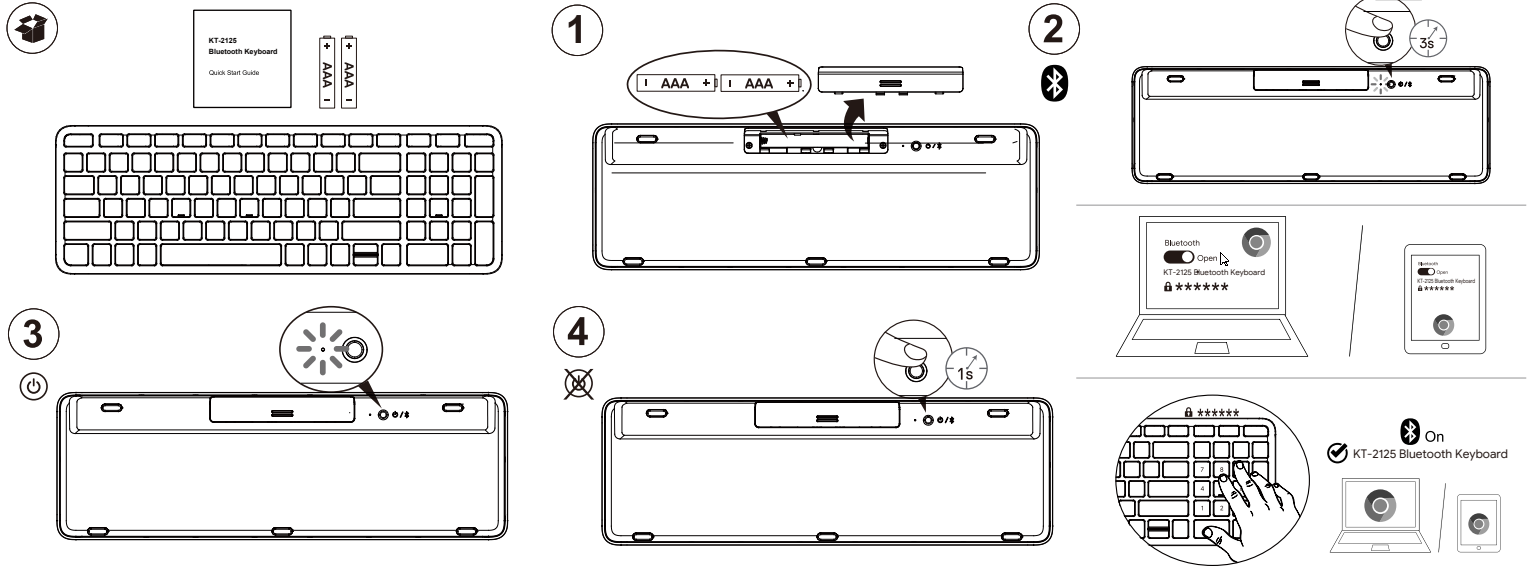


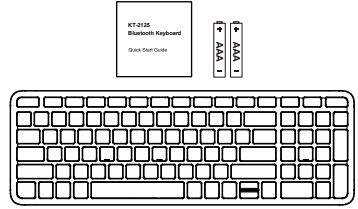
# KT-2125 Bluetooth Keyboard



## Users' Manual

### Package Content

- 1 x Keyboard KT-2125
- 1 x x Quick Start Guide
- 2 x AAA battery



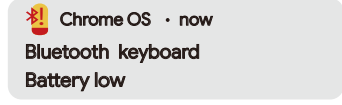
### Features

- Use high technological Bluetooth (BLE5.2)
- Ultra-low power consumption (Battery life may vary based on user and computing conditions.)
- WWCB certificated keyboard

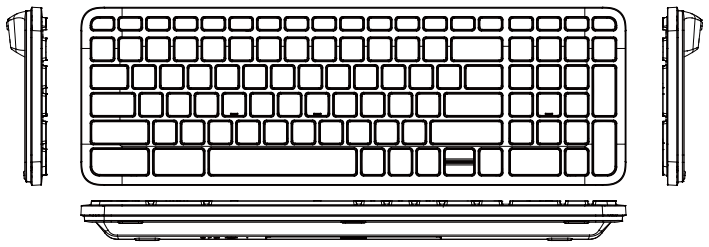
### Product Specification

#### Electrical Specification

- BT Connection distance: 10M
- Input Voltage / current: 3.0V / 10mA
- Battery: 2 x AAA battery
- Power LED Indication:  
Power On: Blue LED brightens for 3 seconds.  
Pairing mode: Blue LED flashes alternately.
- Battery Low Indication:  
When keyboard in low power status, Chrome OS will pop up notification.



#### Parts Name



### Hot Keys

Key Name	Icon	Key Name	Icon
Back	←	Last Track	⏮
Refresh	↻	Play/Pause	▶
Full Screen	⏏	Next Track	▶▶
Overview	☰	Speaker Mute	🔇
Screenshot	📷	Speaker Volumn Down	🔊
Display Brightness Down	⚙️	Speaker Volumn Up	🔊
Display Brightness Up	⚙️	Lock	🔒

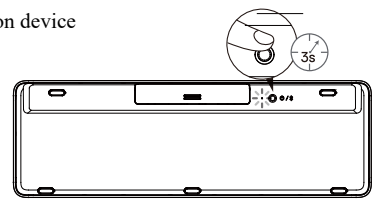
### Power On

Press pairing button once and power on device

### Pairing

#### ➤ Enter Pairing Mode

Press and hold power button for 3 seconds until Blue LED flashing.



#### ➤ Enter Pin Code to connect

Type the pin code shows on windows displayed (random code) and press "Enter" as an end.

When "This device has been successfully added to this computer" window displayed, you can start use this Bluetooth Keyboard.

## Troubleshooting and Tips

If keyboard does not operate or not being recognized.

- Make sure the batteries are not drained off
- To better distinguish whether the keyboard, mouse or computer causes the problem, test the keyboard and mouse on a secondary computer if possible; or test another keyboard and mouse on your current computer.

If problems still present, please contact point of sales or local dealers for further help. For product return, please note that you must return it to your dealer in its original package with proof of purchase (receipt).

## **FEDERAL COMMUNICATIONS COMMISSION (FCC) STATEMENT**

This equipment has been tested and found to comply with the limits for a Class B digital device, Pursuant to Part 15 the FCC rules. These limits are designed to provide reasonable protection against harmful interference in a residential installation. This equipment generates, uses and can radiate radio frequency energy and, if not installed and used in accordance with the instructions, may cause harmful interference to radio communications. However, there is no guarantee that interference will not occur in a particular installation. If this equipment does cause harmful interference will not occur in a particular installation. If this equipment does cause harmful interference to radio or television reception, which can be determined by turning the equipment off and on, the user is encouraged to try to correct the interference by one or more of the following measures:

- Reorient or relocate the receiving antenna.
- Increase the separation between the equipment and receiver.
- Connect the equipment into an outlet on a circuit different from that to which the receiver is connected.
- Consult the dealer or an experienced radio/TV technician for help.

This device complies with part 15 of the FCC rules. Operation is subject to the following two conditions:

(1) This device may not cause harmful Interference, and (2) This device must accept any interference received, including interference that may cause undesired operation.

**Any changes or modifications not expressly approved by the party responsible for compliance could void the user's authority to operate this equipment.**

## **Radiation Exposure Statement:**

This radio device product comply with the FCC portable RF exposure limit set forth for an uncontrolled environment and are safe for intended operation as described in this manual. The further RF exposure reduction can be achieved if the product can be kept as far as possible from the user body or set the device to lower output power if such function is available.

## **Industry Canada statement:**

This device complies with ISED's licence-exempt RSSs. Operation is subject to the following two conditions: (1) This device may not cause harmful interference, and (2) this device must accept any interference received, including interference that may cause undesired operation.

Le présent appareil est conforme aux CNR d'ISED applicables aux appareils radio exempts de licence. L'exploitation est autorisée aux deux conditions suivantes : (1) le dispositif ne doit pas produire de brouillage préjudiciable, et (2) ce dispositif doit accepter tout brouillage reçu, y compris un brouillage susceptible de provoquer un fonctionnement indésirable.

## **Radiation Exposure Statement:**

The product comply with the Canada portable RF exposure limit set forth for an uncontrolled environment and are safe for intended operation as described in this manual. The further RF exposure reduction can be achieved if the product can be kept as far as possible from the user body or set the device to lower output power if such function is available.

## **Déclaration d'exposition aux radiations:**

Le produit est conforme aux limites d'exposition pour les appareils portables RF pour les Etats-Unis et le Canada établies pour un environnement non contrôlé. Le produit est sûr pour un fonctionnement tel que décrit dans ce manuel. La réduction aux expositions RF peut être augmentée si l'appareil peut être conservé aussi loin que possible du corps de l'utilisateur ou que le dispositif est réglé sur la puissance de sortie la plus faible si une telle fonction est disponible.