

**Package contents**

- ASUS Mobile Dock Keyboard
- Quick Start Guide

**NOTE:** If any of the items is damaged or missing, contact your retailer.

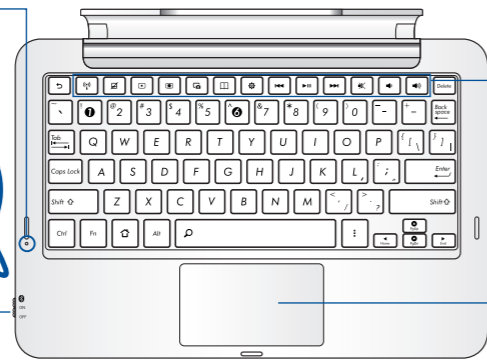
**Hardware setup**

**1. Charging/Bluetooth LED indicator**  
This LED indicator flashes different colors when charging your ASUS mobile dock keyboard or establishing a Bluetooth connection.

**2. Micro USB port**  
Use this port charge the charge the battery pack.

**3. Bluetooth/power switch**

	Turns your ASUS mobile dock keyboard off.
	Turns your ASUS mobile dock keyboard on.
	Turns the Bluetooth function on.



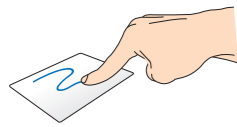
**4. Function keys**  
These keys allow you to perform different tasks on your Tablet PC.

**5. Touchpad**  
Allows you to use multi-gestures to navigate onscreen, and simulates the functions of a regular mouse.

**WARNING!** Keep your TransBoard away from electromagnetic devices, especially navigational aids and transmission devices such as antennas and routers.

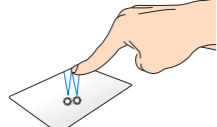
**Touchpad gestures**

**1. Finger slide**



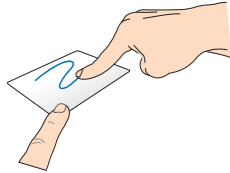
Slide your finger across the touchpad to move the pointer.

**2. Tap/Double tap**



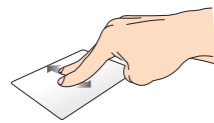
Single tap to select an item. Double tap to launch an item.

**3. Drag and drop**



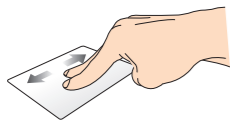
Select an item then press and hold the left-click button. Using your other finger, slide down the touchpad to drag and drop the item to a new location.

**4. Two-finger scroll (up/down)**



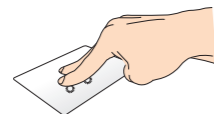
Slide two fingers to scroll up or down.

**5. Two-finger scroll (left/right)**



Slide two fingers to scroll left or right.

**6. Two-finger tap and hold**



Use two fingers to hold a selected item.

**Special keys**

The special keys on your ASUS mobile dock keyboard have standalone functions and some must be used with the function key <Fn>.

**NOTE:** The placement of the special keys on the mobile dock keyboard may vary with country or region, but their functions remain the same.

- Returns to the previous page.
- Toggles the internal wireless LAN ON or OFF.
- Toggles the internal Bluetooth ON or OFF.
- Toggles the touchpad ON or OFF.
- Decreases the display brightness.
- Increases the display brightness.
- Toggles the ambient light sensor ON or OFF.
- Captures the screen image.
- Launches the web browser.
- Launches the Settings screen.
- Returns to the previous track when playing music.
- Starts playing music from your playlist. Resumes or pauses the current playback.
- Fast forwards or skips to the next track during playback.
- Mutes the speaker.
- Decreases the speaker volume.
- Increases the speaker volume.
- Locks the ASUS PadFone and put it into sleep mode.
- Returns to Home Screen.
- Browses the contents in the ASUS PadFone and the web.
- Activates the properties menu and is equivalent to or on the screen.

Press <Fn> and the arrow keys to scroll up and down or scroll to the start and end of a document or web page.

**Using your ASUS mobile dock keyboard**

**Docking your ASUS PadFone**

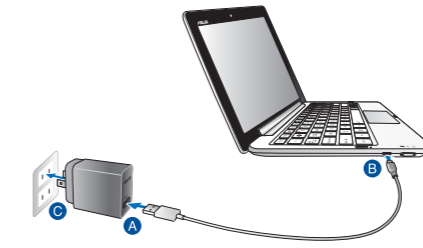


To dock your ASUS PadFone:

- A** Put the ASUS mobile dock keyboard on a flat and stable surface.
- B** Align the ASUS PadFone with the ASUS mobile dock keyboard.
- C** Firmly insert the ASUS PadFone into the hinge.

**IMPORTANT!** Always pick up the entire assembly from the bottom when your ASUS PadFone is attached to the ASUS mobile dock keyboard.

**Charging your ASUS mobile dock keyboard**



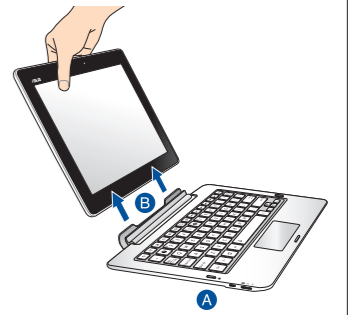
To charge your ASUS mobile dock keyboard:

- A** Connect the USB cable to the power adapter.
  - B** Insert the Micro USB end of the USB cable to the mobile dock keyboard.
  - C** Plug the power adapter into a grounded power outlet.
- Charge your ASUS mobile dock keyboard for eight (8) hours before using it in battery mode for the first time.

**IMPORTANT!**

- Use only the ASUS PadFone's bundled power adapter and USB cable to charge your ASUS PadFone mobile dock keyboard. Using a different power adapter may damage these devices.
- Ensure that you plug the power adapter to the correct power outlet with the correct input rating. The output voltage of this adapter is DC 5V, 250mA.
- When using your ASUS PadFone assembly while plugged-in to a power outlet, the grounded power outlet must be near the unit and easily accessible.

**Undocking your ASUS PadFone**



To undock your ASUS PadFone:

- A** Put the entire assembly on a flat and stable surface.
- B** Remove the ASUS PadFone from the ASUS mobile dock keyboard.

**Radiation Exposure Statement:**

The product comply with the Canada portable RF exposure limit set forth for an uncontrolled environment and are safe for intended operation as described in this manual. The further RF exposure reduction can be achieved if the product can be kept as far as possible from the user body or set the device to lower output power if such function is available.

**Déclaration d'exposition aux radiations:**

Le produit est conforme aux limites d'exposition pour les appareils portables RF pour les Etats-Unis et le Canada établies pour un environnement non contrôlé.

Le produit est sûr pour un fonctionnement tel que décrit dans ce manuel. La réduction aux expositions RF peut être augmentée si l'appareil peut être conservé aussi loin que possible du corps de l'utilisateur ou que le dispositif est réglé sur la puissance de sortie la plus faible si une telle fonction est disponible.

**ASUS Recycling/Takeback Services**

ASUS recycling and takeback programs come from our commitment to the highest standards for protecting our environment. We believe in providing solutions for you to be able to responsibly recycle our products, batteries, other components, as well as the packaging materials. Please go to <http://csr.asus.com/english/Takeback.htm> for the detailed recycling information in different regions.

**REACH**

Complying with the REACH (Registration, Evaluation, Authorisation, and Restriction of Chemicals) regulatory framework, we published the chemical substances in our products at ASUS REACH website at <http://green.asus.com/english/REACH.htm>

**VCCI: Japan Compliance Statement (VCCI Class B Statement)**

情報処理装置等電波障害自主規制について  
この装置は、情報処理装置等電波障害自主規制協議会 (VCCI) の基準に基づくクラスB情報技術装置です。この装置は家庭環境で使用することを目的としていますが、この装置がラジオやテレビジョン受信機に近接して使用されると、受信障害を引き起こすことがあります。

取扱説明書に従って正しい取り扱いをして下さい。

**Taiwan Wireless Statement**

經型式認證合格之低功率射頻電機，非經許可，公司、商號或使用者均不得擅自變更頻率、加大功率或變更原設計之特性及功能。低功率射頻電機之使用不得影響飛航安全及干擾合法通信；經發現有干擾現象時，應立即停用，並改善至無干擾時方得繼續使用。前項合法通信，指依電信法規定作業之無線電通信。低功率射頻電機須受合法通信或工業、科學及醫療用電波輻射性電機設備之干擾。

**Industry Canada Statement**

This device complies with RSS-210 of Industry Canada rules. Operation is subject to the following two conditions: (1) this device may not cause harmful interference, and (2) this device must accept any interference received, including interference that may cause undesired operation.

Ce dispositif est conforme à la norme CNR-210 d'Industrie Canada applicable aux appareils radio exempts de licence. Son fonctionnement est aux deux conditions suivantes: (1) le dispositif ne doit pas produire de brouillage préjudiciable, et (2) ce dispositif doit accepter tout brouillage reçu, y compris un brouillage susceptible de provoquer un fonctionnement indésirable.

**FCC:**

**Radiation Exposure Statement:**

The product comply with the FCC portable RF exposure limit set forth for an uncontrolled environment and are safe for intended operation as described in this manual. The further RF exposure reduction can be achieved if the product can be kept as far as possible from the user body or set the device to lower output power if such function is available.

**Federal Communications Commission Statement**

This device complies with Part 15 of the FCC Rules. Operation is subject to the following two conditions:

- This device may not cause harmful interference; and
  - This device must accept any interference received including interference that may cause undesired operation.
- This equipment has been tested and found to comply with the limits for a Class B digital device, pursuant to Part 15 of the FCC Rules. These limits are designed to provide reasonable protection against harmful interference in a residential installation. This equipment generates, uses and can radiate radio frequency energy and, if not installed and used in accordance with manufacturer's instructions, may cause harmful interference to radio communications. However, there is no guarantee that interference will not occur in a particular installation. If this equipment does cause harmful interference to radio or television reception, which can be determined by turning the equipment off and on, the user is encouraged to try to correct the interference by one or more of the following measures:
- Reorient or relocate the receiving antenna.
  - Increase the separation between the equipment and receiver.
  - Connect the equipment to an outlet on a circuit different from that to which the receiver is connected.
  - Consult the dealer or an experienced radio/TV technician for help.

**WARNING:** Use only shielded cables to connect I/O devices to this equipment. You are cautioned that changes or modifications not expressly approved by the party responsible for compliance could void your authority to operate the equipment.

**CE Statement of Compliance with EU Directive**

This device complies with the essential requirements of the R&TTE Directive 1999/5/EC. This device is a 2.4 GHz wideband transmission system (transceiver) intended for use in all EU member states and EFTA countries, except in Italy where restrictive use applies.

In Italy, the end-user should apply for a license at the national spectrum authorities in order to obtain authorization to use the device for setting up outdoor radio links and/or for supplying public access to telecommunications and/or network services.

**MANUFACTURER**  
ASUSTeK Computer Inc.  
Tel: +886-2-2894-3447  
Address: No. 150, LI-TE RD., PEITOU, TAIPEI 112, TAIWAN

**AUTHORISED REPRESENTATIVE IN EUROPE**  
ASUS Computer GmbH  
Address: HARKORT STR. 21-23, 40880 RATINGEN, GERMANY

**Authorized Distributor in Turkey**  
PENTA TEKNOLOJİ URUNLERİ DAGITIM TICARET A.Ş.  
Address, City: DUDULLU ORGANİZE SANAYİ BÖLGESİ NATO YOLU 4. CAD. NO:1

DUDULLU UMRANIYE 34775 İSTABUL TURKEY  
Distributor Tel: 0216 645 8200

**Country: Turkey**  
해당 무선설비는 전파혼신 가능성이 있으므로 인명안전과 관련된 서비스는 할 수 없음  
AEEE Yönetmeliğine Uygundur