

# **Chicony Standard Bluetooth Keyboard Users Manual**

**Model No.: KT-1063**

Issue: Jan. 03, 2011

# Scope

## Getting Start

Thank you for choosing this ultrathin keyboard with Bluetooth technology to ensure no hinder communication between the keyboard and your computer without connecting cable. The transmission and receiving of keyboard are free from angle restriction. It can be used with IBM PC compatible computers pre-installed with the Windows 7, Windows Vista or Windows XP operating system.

## Features

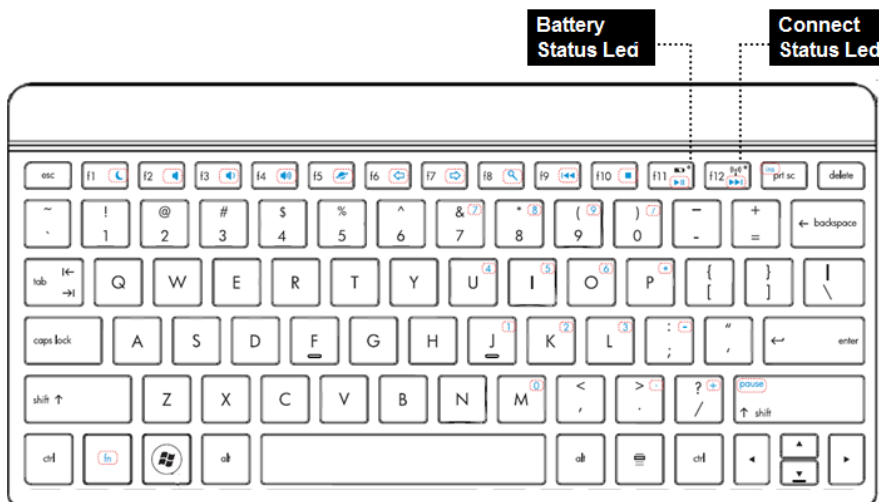
- I-Pad accessory KB
- Use high technological Bluetooth (Broadcom BCM2042).
- Ultra-low power consumption
- Rechargeable Lithium Ion Polymer Battery
- Use time last for 3 months with 1 hour charge through Micro-USB

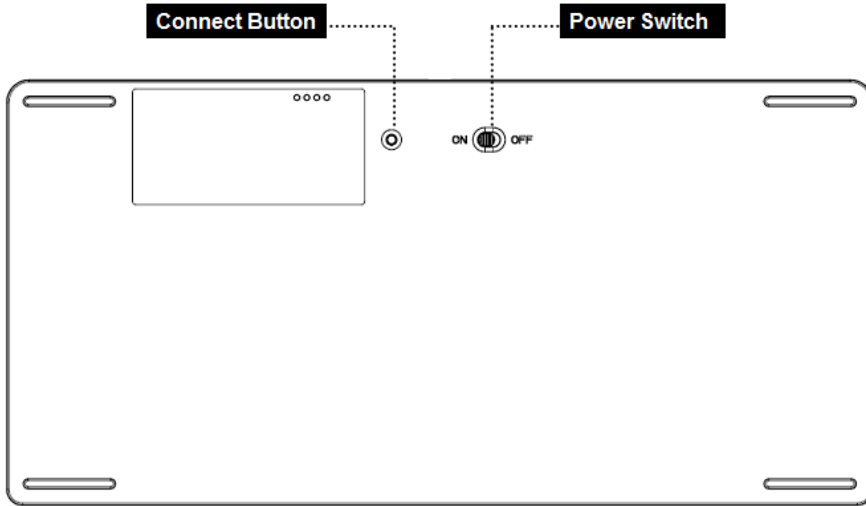
## Product Specification

### Electrical Specification











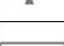
1. Frequency Range: 2402 MHz ~ 2480 MHz
2. input Voltage / Current: 3.7Vdc / 30mA
3. Voltage / Current of charger mode: 5V, 50mA
4. Battery: 1 pieces of Lithium Ion Polymer Battery (110mA/hr)
5. Battery State: Battery low detect voltage: 3.2V +/- 5%  
Cut off detect voltage : 2.8V +/- 5%
6. Operation distance: 10 meter at free space

### Part Names








## Hot Keys

KT-1063 (I-Pad Applicative) HOT KEY			
	F1	<b>Home</b>	Go back to main windows on your desktop.
	F2	<b>Search</b>	Activate the OS default search function.
	F3	<b>Previous Track</b>	Use this key to skip to the forward title in the active player.
	F4	<b>Play/Pause</b>	Use this key to start or pause for a short time the playback of a title just as you would do with a normal CD player.
	F5	<b>Next Track</b>	Use this key to skip to the next title in the active player.
	F6	<b>Mute</b>	Use this key to switch on/off the connected loudspeaker.
	F7	<b>Decrease volume</b>	This key decreases the volume of the connected loudspeakers.
	F8	<b>Increase volume</b>	This key increases the volume of the connected loudspeakers.
	F11	<b>Battery indicator</b>	It indicates battery status and will flash when no battery or during charging.
	F12	<b>Connect indicator</b>	It indicates connect status when search device or during binding.
	-	<b>screen keyboard</b>	When click on the button, screen keyboard will come up on IPAD. During Mac system, CD will be ejected when push the button.

KT-1063 (Windows Version) HOT KEY

	F1		
	F2	<b>Mute</b>	Use this key to switch on/off the connected loudspeaker.
	F3	<b>Decrease volume</b>	This key decreases the volume of the connected loudspeakers.
	F4	<b>Increase volume</b>	This key increases the volume of the connected loudspeakers.
	F5	<b>Internet</b>	With this key you can start the standard browser for your system.
	F6	<b>Backward</b>	Switch to the previous web page.
	F7	<b>Forward</b>	Switch to the next web page
	F8	<b>Search</b>	Activate the OS default search function.
	F9	<b>Previous Track</b>	Use this key to skip to the forward title in the active player.
	F10	<b>Stop</b>	Use this key to end the playback of a title.
	F11	<b>Play/Pause</b>	Use this key to start or pause for a short time the playback of a title.
	F12	<b>Next Track</b>	Use this key to skip to the next title in the active player.
	F11	<b>Battery indicator</b>	It indicates battery status and will flash when no battery or during charging.
	F12	<b>Connect indicator</b>	It indicates connect status when search device or during binding.

## **Status light indicator**

### ➤ **Battery Status Led**

Battery low : Red LED brighten 0.5s,and waiting 5sec

### ➤ **Connect Status Led**

Power ON : Blue LED brighten 5sec

Pairing : Blue LED flash 0.5s/0.5s (3min)

Searching: Blue LED brighten 5sec continued to success

Charging: Green LED turn on

Charging full: Green LED turn off

## **Before Use**

### ➤ **Recharging the battery**

Plug USB recharge cable from keyboard to PC USB hub or USB adaptor at least 10 minutes. Ensure battery power is above low level.

### ➤ **Set power switch is On**

# Configuring the Keyboard

## Configuring Steps

Operation of the Bluetooth software may vary depending on your personal computer/device. For details, refer to the manuals provided with your personal computer. The setup instructions are based on your operating system.

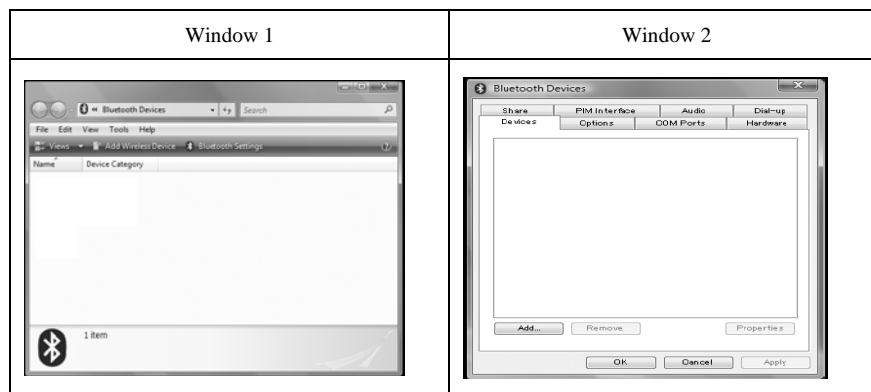
Case A: Click (Start), then “Control Panel.”

Case B: Click the “Hardware and Sound” icon.

Case C: If the “Bluetooth Devices” icon is in the “Hardware and Sound” window: Then go to following D, if the “Bluetooth Devices” icon is not visible in the “Hardware and Sound” window: Close the “Control Panel” and go to pre-install XP section.

Case D: Click the “Bluetooth Devices” icon, and verify the contents of the window displayed. If you switch to Classic View, double-click the “Bluetooth Devices” icon.

Case E: Review the Bluetooth Devices windows shown here. If you see window 1, go to the instructions in **Step (A)**. If you see window 2, go to the instructions in **Step (B)**.



### Steps (A)

1. Turn on the keyboard.
2. Press the CONNECT button on the bottom of the keyboard. The status light flashes blue.
3. On the “Bluetooth Devices” window, click the “Add Wireless Device” icon.
4. In the device list, select “Bluetooth Keyboard” and click “Next.”
5. Select “Pair with using a code”, type the random code as screen shown and press “Enter” as an end.
6. When “This device has been successfully added to this computer” window displayed, you can start use this Bluetooth Keyboard.

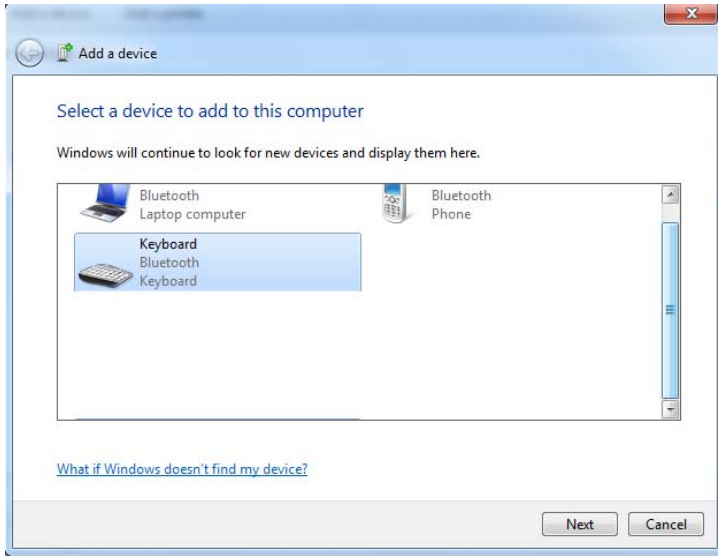
### Steps (B)

1. Turn on the keyboard.
2. On the “Bluetooth Devices” window, select the “Devices” tab and click “Add.”  
The “Add Bluetooth Device Wizard” appears.
3. Press the CONNECT button on the bottom of the keyboard. The status light flashes blue.
4. Select the “My device is set up and ready to be found” check box and click “Next.”
5. In the device list, select “Bluetooth Keyboard” and click “Next.”
6. Select “Use a passkey” and type the random code as screen shown and press “Enter” as an end.
7. When “This device has been successfully added to this computer” window displayed, you can start use this Bluetooth Keyboard.

**Here is an example for Bluetooth keyboard configuration to Windows Vista and Windows 7.**

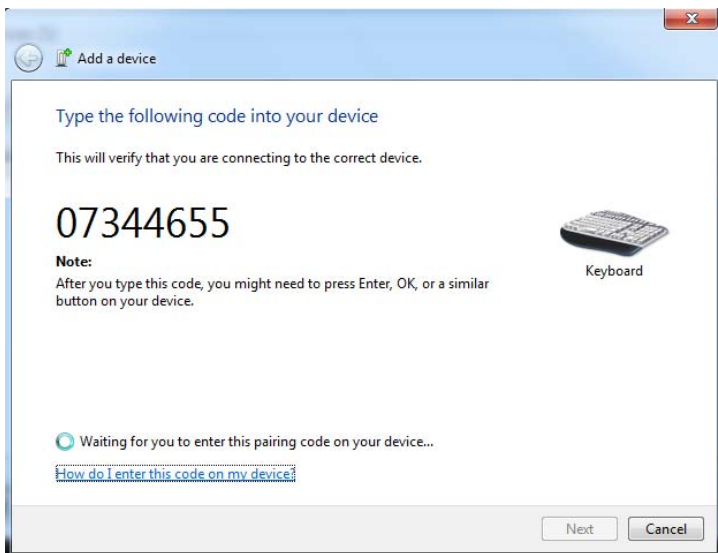
Step 1: Click the “Bluetooth Devices” icon → choose “Add a Device”.

Step 2: In “Select a device to add to this computer” window → choose “Bluetooth Keyboard” → “Next”

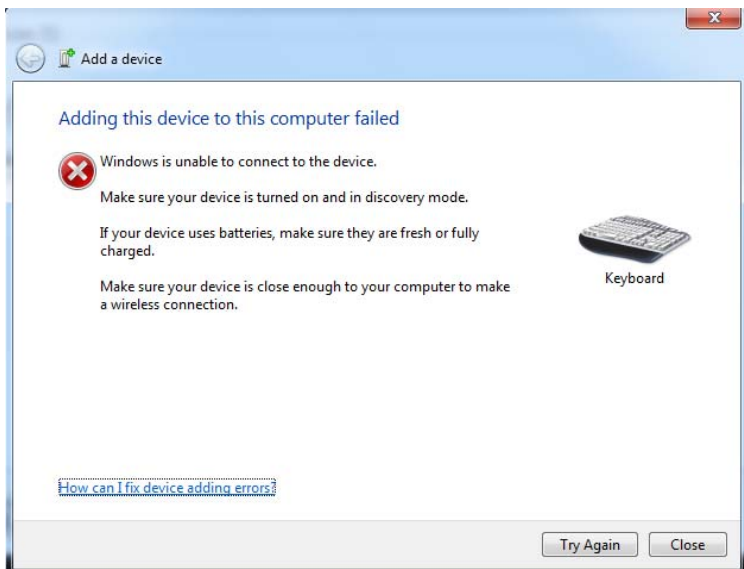


Step 3: Type the following code into your device and press “Enter” as an end.

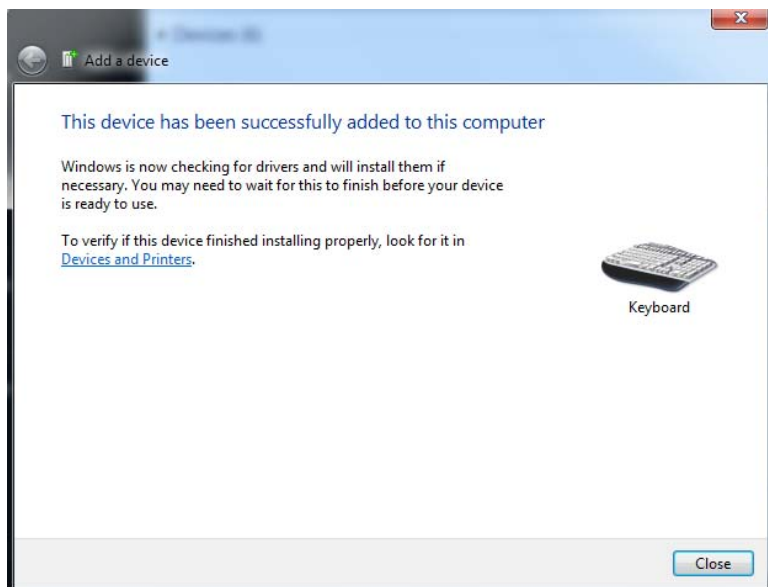
(The code will be a random code as window displayed)



Note: If this step failed, please click “Try Again” and press any key on the Bluetooth Keyboard to reconnect again.



Step 4: When “This device has been successfully added to this computer” window displayed, you can start use this Bluetooth Keyboard.



### **Disconnecting**

Turn off the mouse.

### **Reconnection**

Turn on the mouse, and then reconnect.

### **Note**

It may take time to reconnect after turning off the mouse.

## **Troubleshooting and Tips**

The keyboard does not operate following installation or is not recognized.

- Make sure the batteries are not too weak.
- To determine whether the keyboard, mouse or computer causes the problem test the keyboard and mouse on a second computer if possible; or test another keyboard and mouse on your current computer.

If you are still unable to solve the problem, please contact your point of sale or your dealer.

If you need to exchange the keyboard, please note that you must return it to your dealer in its original packaging and also a produce proof of purchase (receipt). Keep your receipt in a safe place after purchase.

## **FEDERAL COMMUNICATIONS COMMISSION (FCC) STATEMENT**

This equipment has been tested and found to comply with the limits for a Class B digital device, Pursuant to Part 15 the FCC rules. These limits are designed to provide reasonable protection against harmful interference in a residential installation.

This equipment generates, uses and can radiate radio frequency energy and, if not installed and used in accordance with the instructions, may cause harmful interference to radio communications. However, there is no guarantee that interference will not occur in a particular installation. If this equipment does cause harmful interference will not occur in a particular installation. If this equipment does cause harmful interference to radio or television reception, which can be determined by turning the equipment off and on, the user is encouraged to try to correct the interference by one or more of the following measures:

- Reorient or relocate the receiving antenna.
- Increase the separation between the equipment and receiver.
- Connect the equipment into an outlet on a circuit different from that to which the receiver is connected.
- Consult the dealer or an experienced radio/TV technician for help.

This device complies with part 15 of the FCC rules. Operation is subject to the following two conditions:

(1) This device may not cause harmful Interference, and (2) This device must accept any interference received, including interference that may cause undesired operation.

### **WARNING:**

Use only shielded cables to connect I/O devices to this equipment. You are cautioned that changes or modifications not expressly approved by the party responsible for compliance could void your authority to operate the equipment.

### **CAUTION: AVOID PROLONGED USE OF THE KEYBOARD WITHOUT BREAKS.**

Take regular breaks and keep a good posture. Consult your physician promptly if you notice any lost of motion or pain in your wrist when using the keyboard.