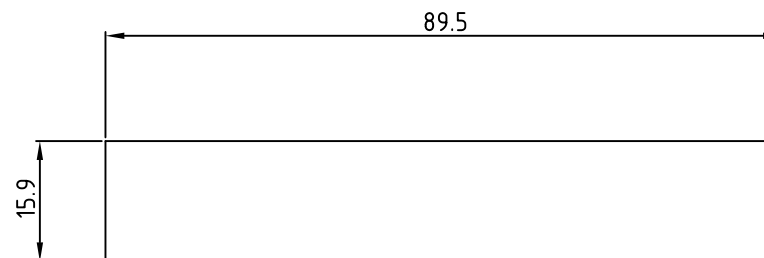
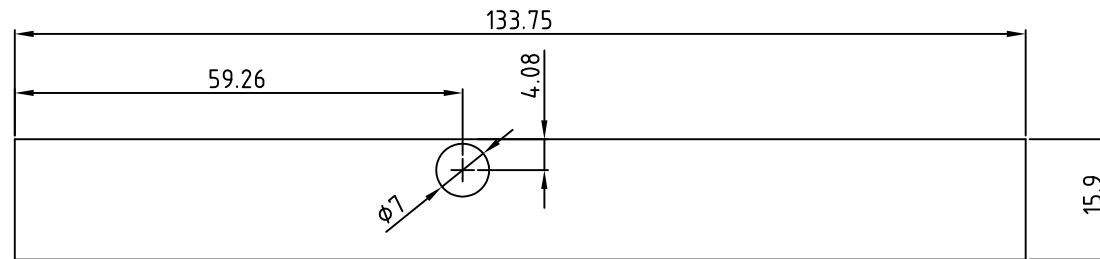


REV LTR	DATE	REV. DIMENSION	DESIGN	APPROVE	REV LTR	DATE	REV. DIMENSION	DESIGN	APPROVE
△B					△D				
△C					△E				



VENDOR UL MARK



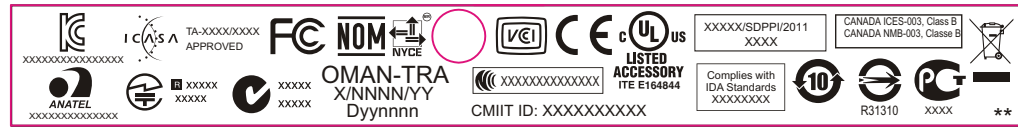
**Dell Inc.** 键盘/鍵盤 CFT: XXXXXXXXXXXXXXXX 制造商: 群光电子股份有限公司  
 KM632 SUBTEL: XXXXX MIN(型号/型號): KG-1089  
 TRC ID: XXXXXXXXXXXXXXXX Rating: 3V±30mA  
 IC: 5524A-KG1089 MRXXXX ANRT XXXX (额定电压/额定电压/额定电压)  
 FCC ID: E8HKG-1089 ETA NO: XXX/XXX/WRLO CNC: XXXXXXXX  
 MADE IN CHINA NTC Type acceptance TRA REGISTERED NO.: XXXXXXXXXXXXXXXX  
 中國製造(中國製造) No.: ESD-XXXXXXXXX DEALER NO.: DA0038484/10

**Drawing reference for trial run only**

**NOTES:**

1. MATERIAL: SYNTHETIC PAPER t=0.15mm (WITH GLUE)  
(UL/CSA APPROVED)
2. BACKGROUND COLOR: PANTONE Process Black C
3. TEXT & SYMBOLS COLOR: WHITE
4. FINISHED: ADHESIVE.
5. LABEL VENDOR HAS TO BE APPRD. BY UL/CSA
6. THIS PRODUCT/COMPONENT MUST COMPLY WITH CHICONY SPECIFICATION "ISO 361"

APPROVE	CHECK	DESIGN	<b>DELL</b>	KG-1089/WUG1089
SAM	T.S. MAGGIE	TAMMY	PART NAME: <b>SPEC. ID LABEL</b>	
03/23-'11	03/23-'11	03/23-'11	DWG NO.: <b>KG-1089-FCC(模刻)-X0</b>	



<b>Dell Inc.</b> 键盘/鍵盤	CFT: XXXXXXXXXXXXXXXX	制造商: 群光电子股份有限公司
<b>KM632</b>	SUBTEL: XXXXX	MIN(型号/型號): KG-1089
IC: 5524A-KG1089	TRC ID: XXXXXXXXXXXXXXXX	Rating: 3V=30mA
FCC ID: E8HKG-1089	MRXXXX ANRT XXXX	(额定电压/额定電壓電流)
MADE IN CHINA	ETA NO: XXX/XXX/WRLO	CNC: XXXXXXXX
中國製造(中國製造)	NTC Type acceptance	TRA REGISTERED NO.: XXXXXXXXXXXX
	No.: ESD-XXXXXXX	DEALER NO.: DA0038484/10